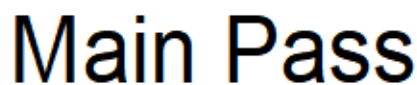
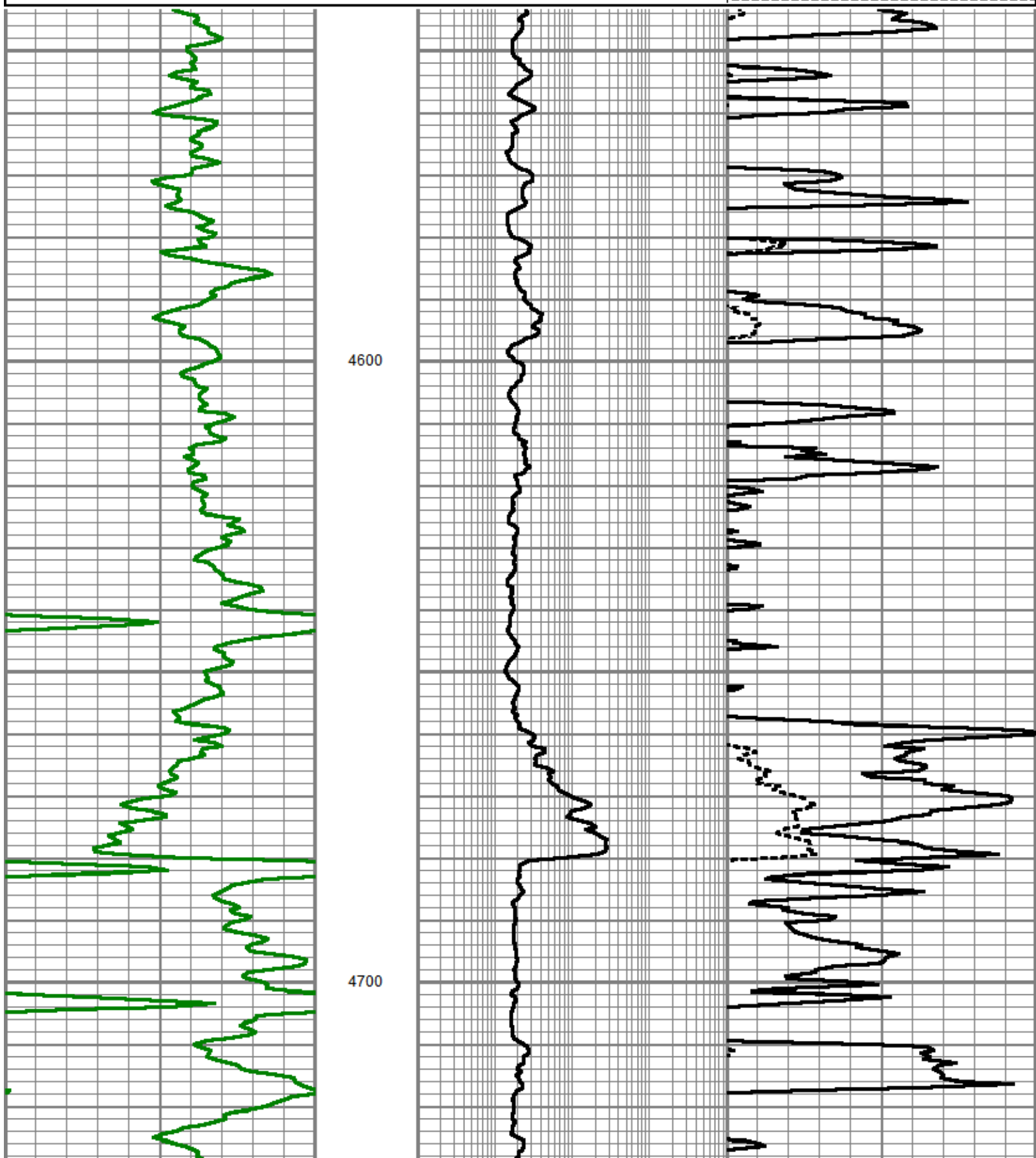


<<< Fold Here >>>
All interpretations are opinions based on inferences from electrical or other measurements and we cannot and do not guarantee the accuracy or correctness of any interpretation, and we shall not, except in the case of gross or willful negligence on our part, be liable or responsible for any loss, costs, damages, or expenses incurred or sustained by anyone resulting from any interpretation made by any of our officers, agents or employees. These interpretations are also subject to our general terms and conditions set out in our current Price Schedule.
Comments
<p>This well is an Offset Well Depth referenced to Reliance RBL dated 21-AUG-2019 Reliance Hunter RAS PN data was collected on this well Training Well: CC 0697-04-08E TW models were built using Schlumberger OH provided by the client and Reliance Hunter PN data Density Porosity Matrix = 2.68 g/cc Emulation results may be affected by areas of poor bond Emulation results may be affected by washouts and quality of OH data Thank you for choosing Reliance Oilfield Services, LLC!</p>



Database File	c:\techlog-projects\laramie_cc 0697-04-08e tw\data\export\cc federal 0697-04-04e\processed_laramie energy_cc federal 0697-
Dataset Pathname	SHIFTED/merged_set_final
Presentation Format	ros_emulation_output
Dataset Creation	Thu Sep 12 15:24:43 2019
Charted by	Depth in Feet scaled 1:240

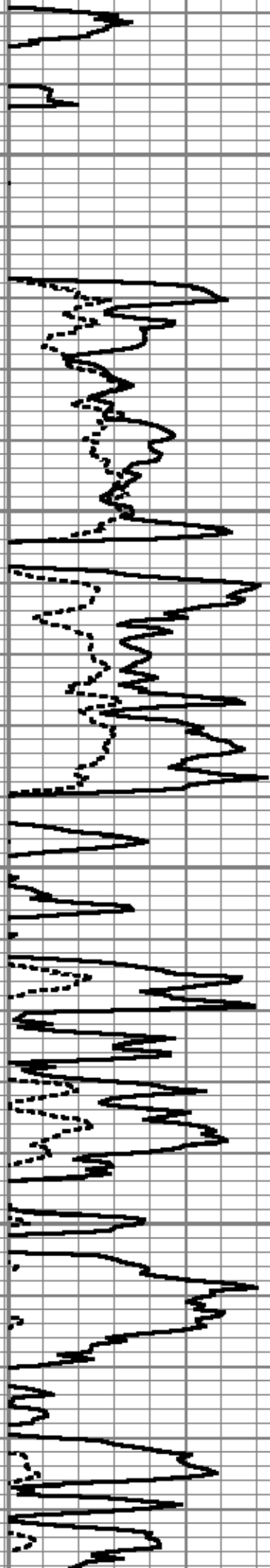
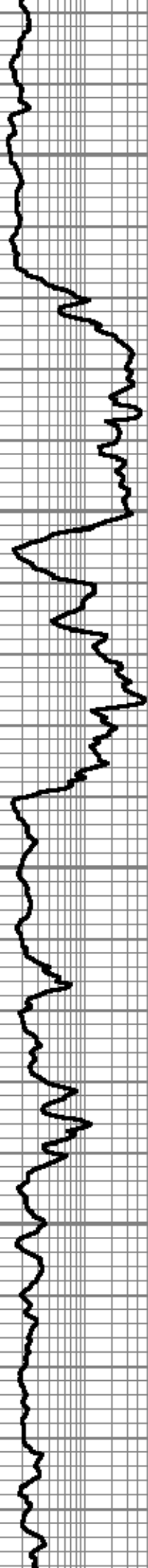
0	Normalized Gamma Ray (GAPI)	150	0.2	Emulated Resistivity (Ohm-m)	2000	0.3	Emulated Density Porosity	-0.1
						0.3	Emulated Neutron Porosity	-0.1

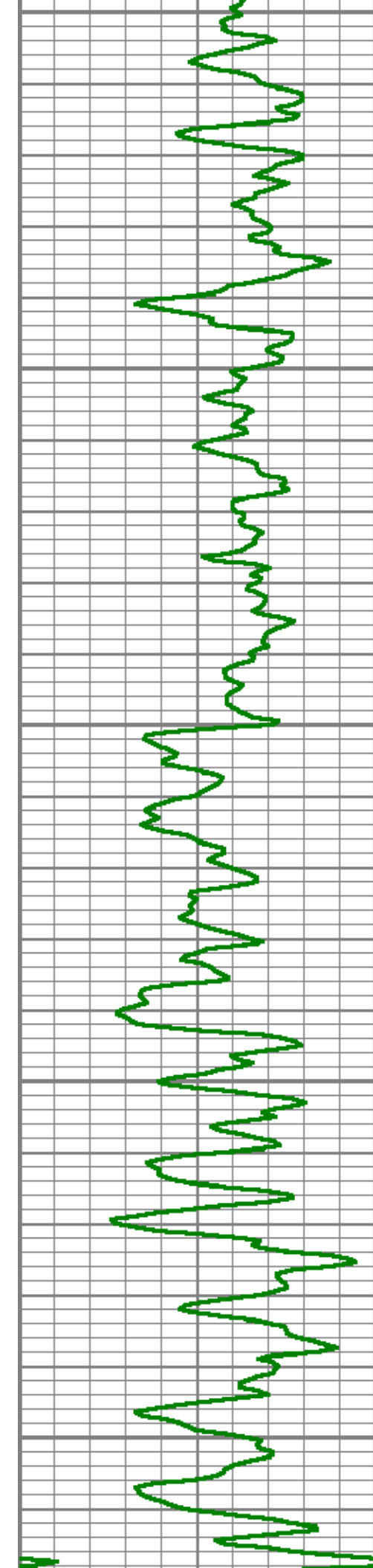




4800

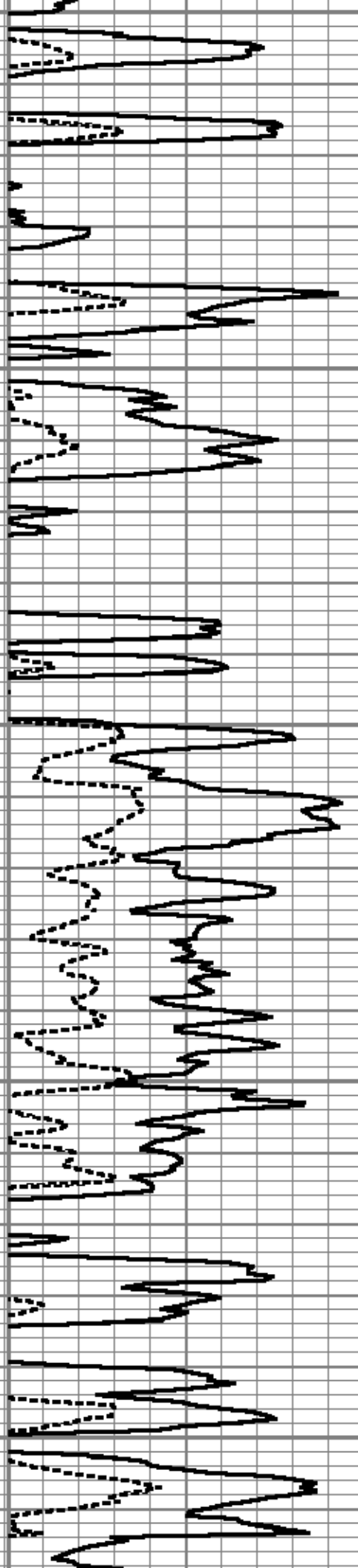
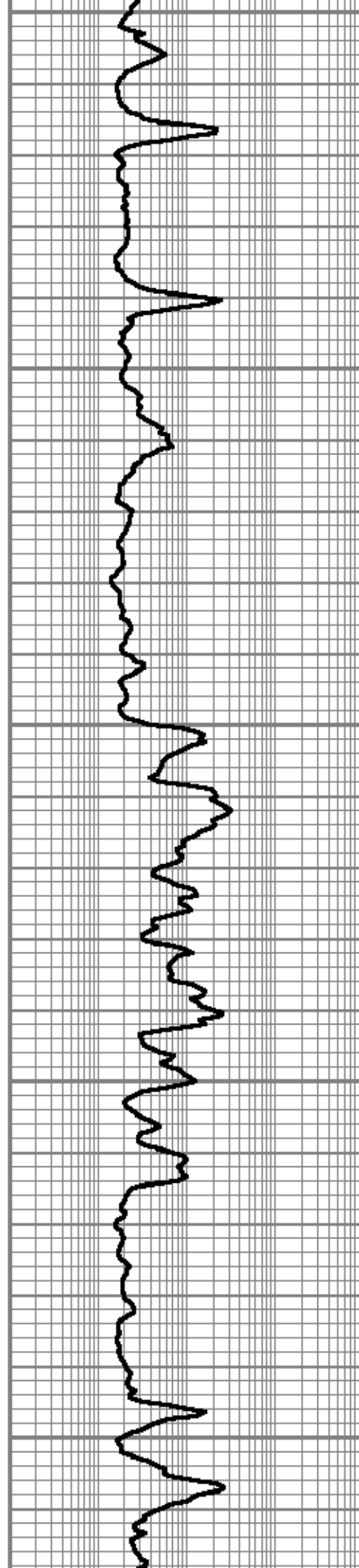
4900

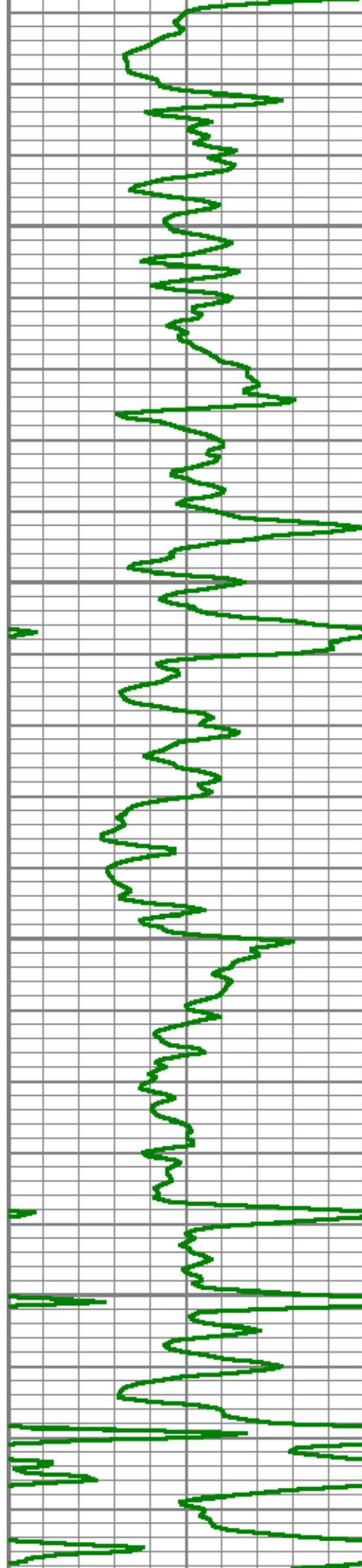




5000

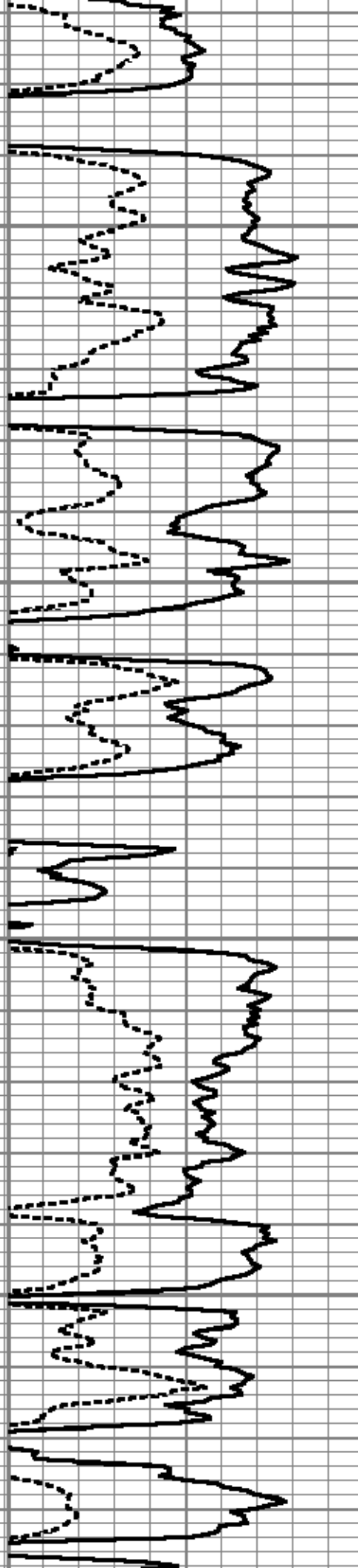
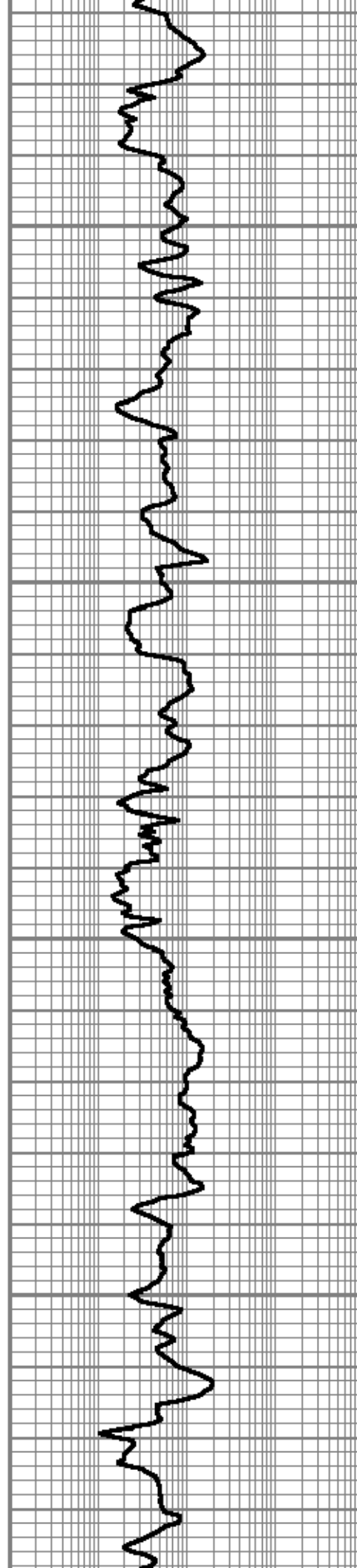
5100

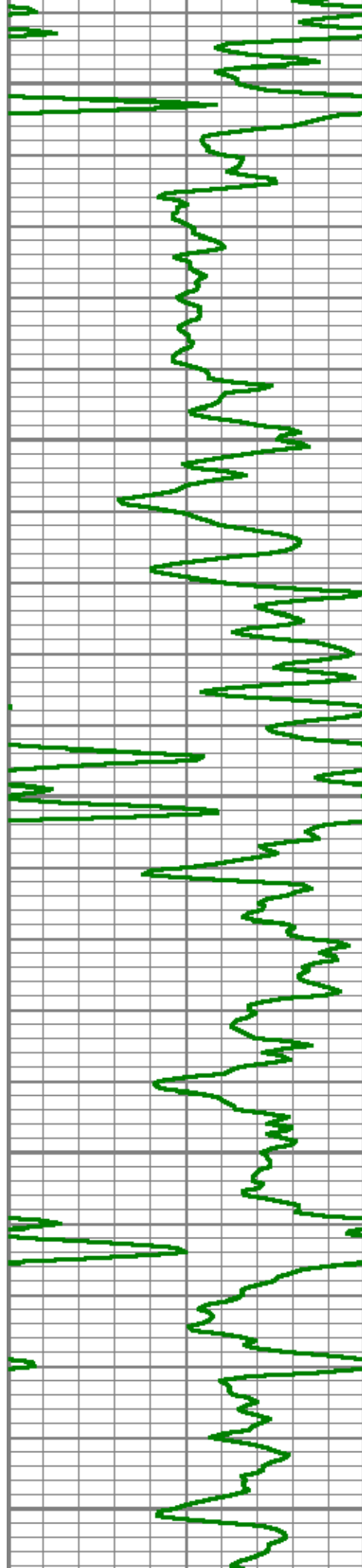




5200

5300

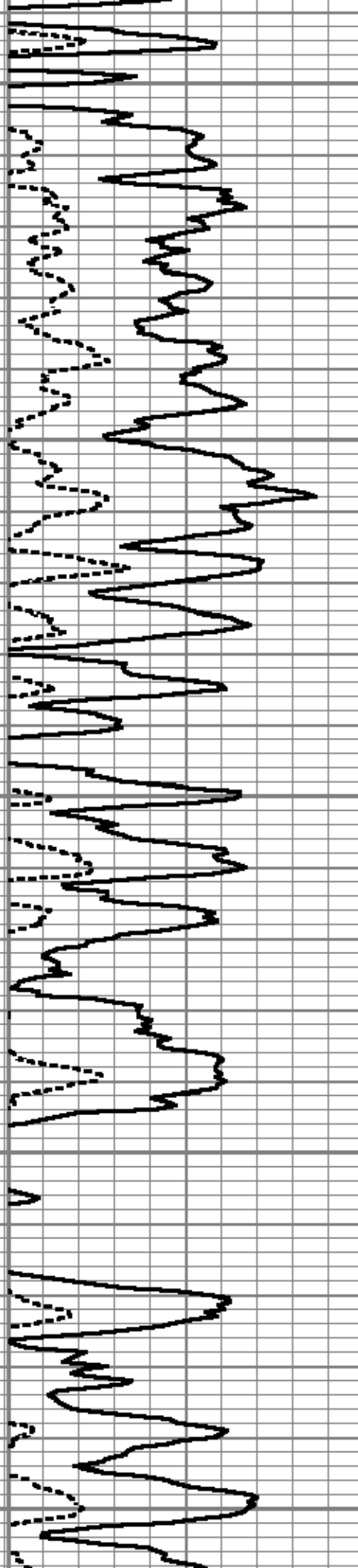
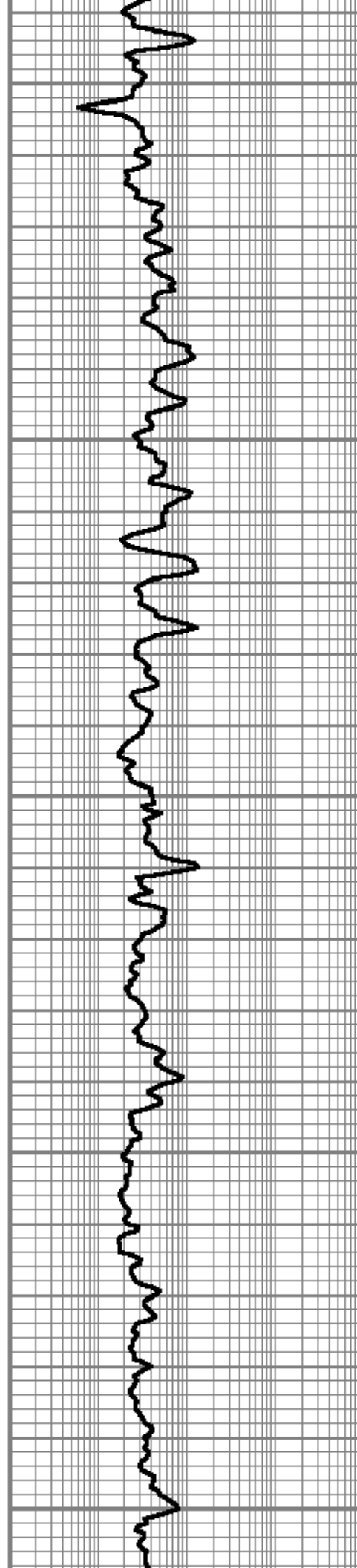


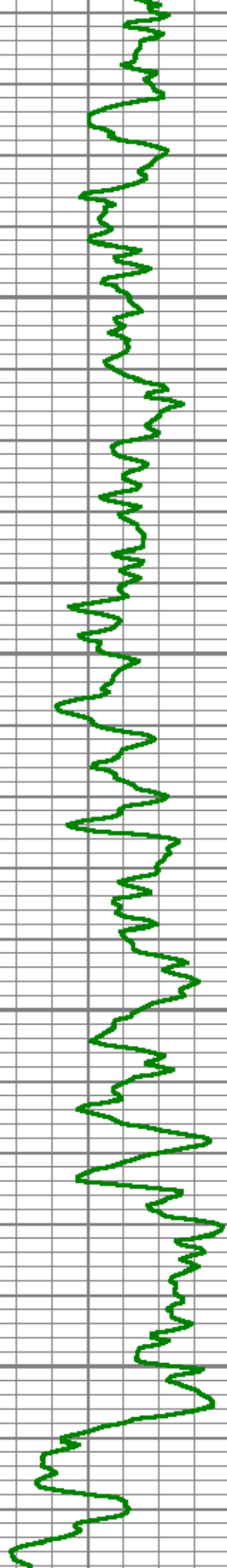


5400

5500

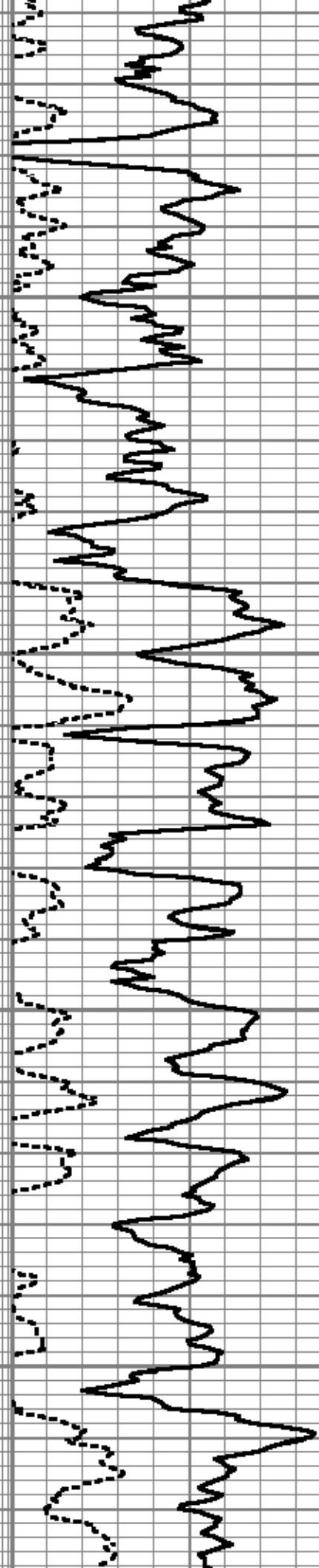
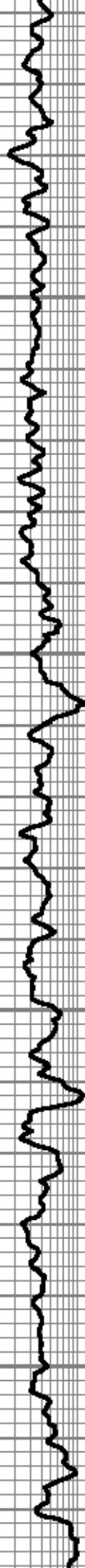
5600





5700

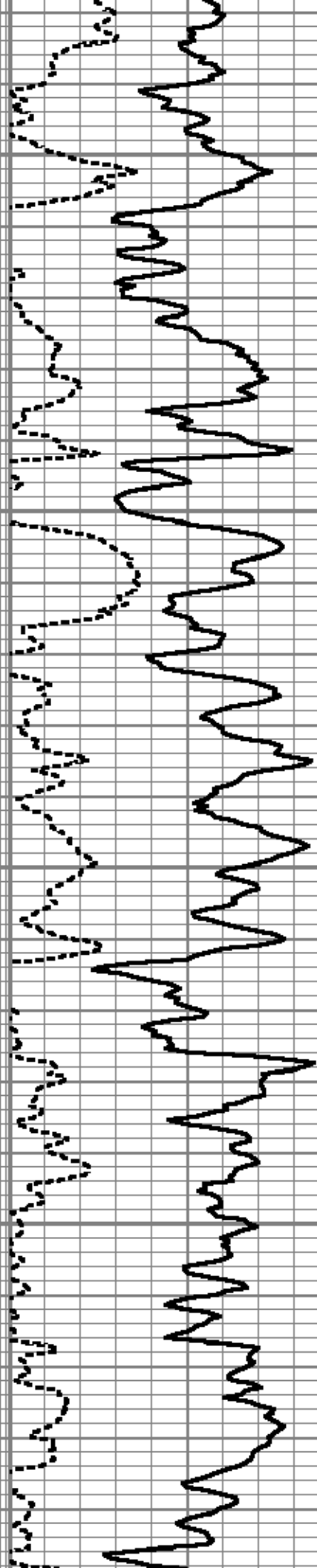
5800

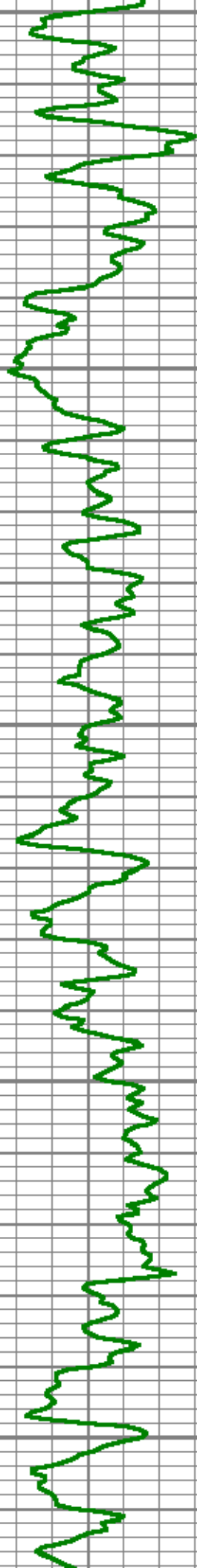




5900

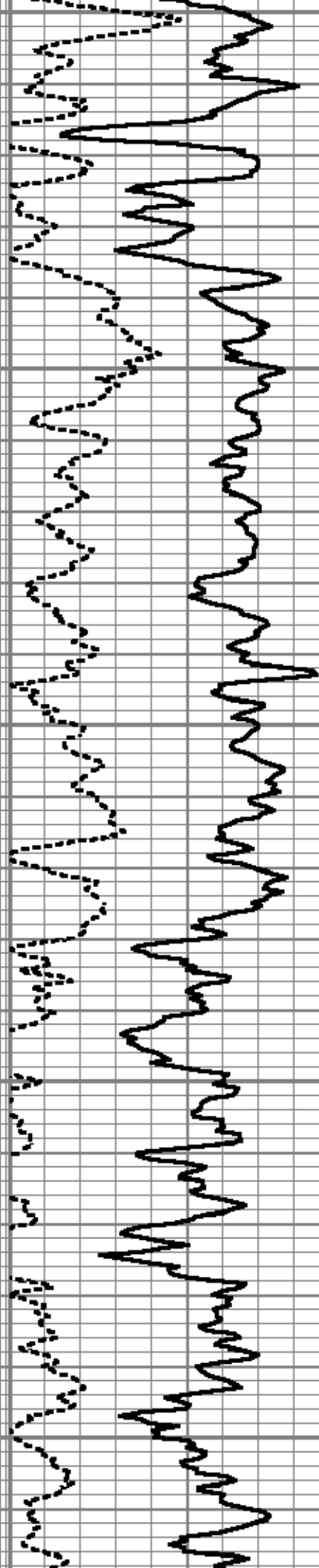
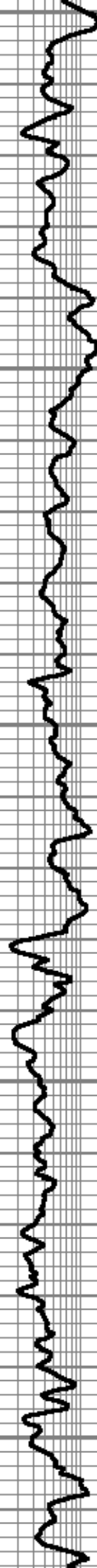
6000

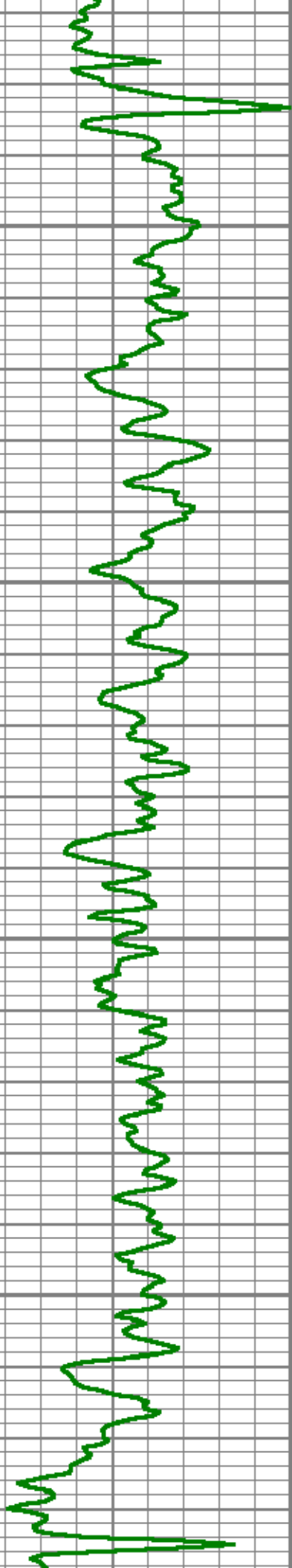




6100

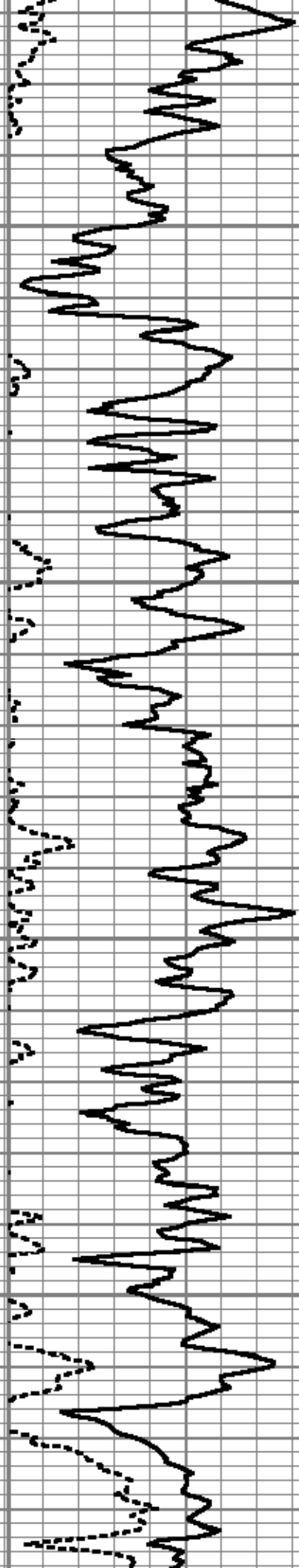
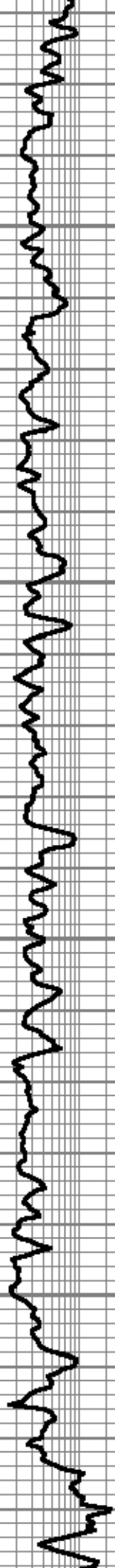
6200

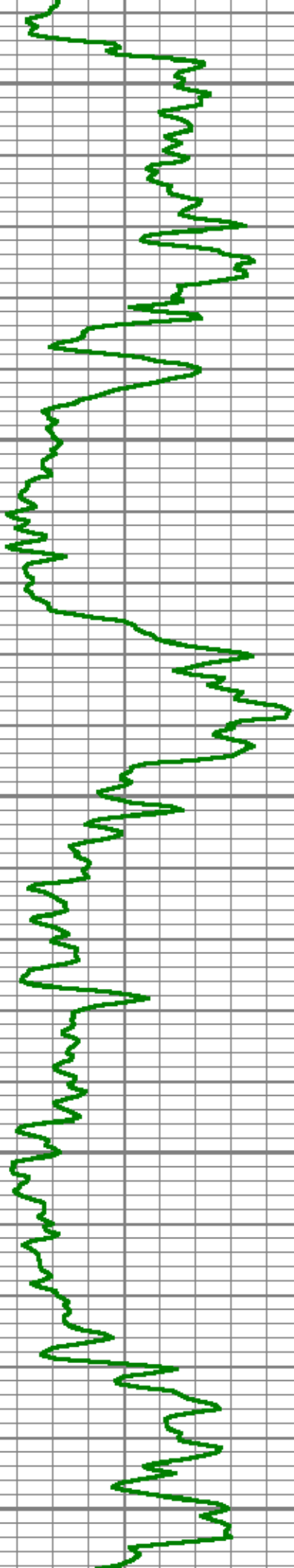




6300

6400

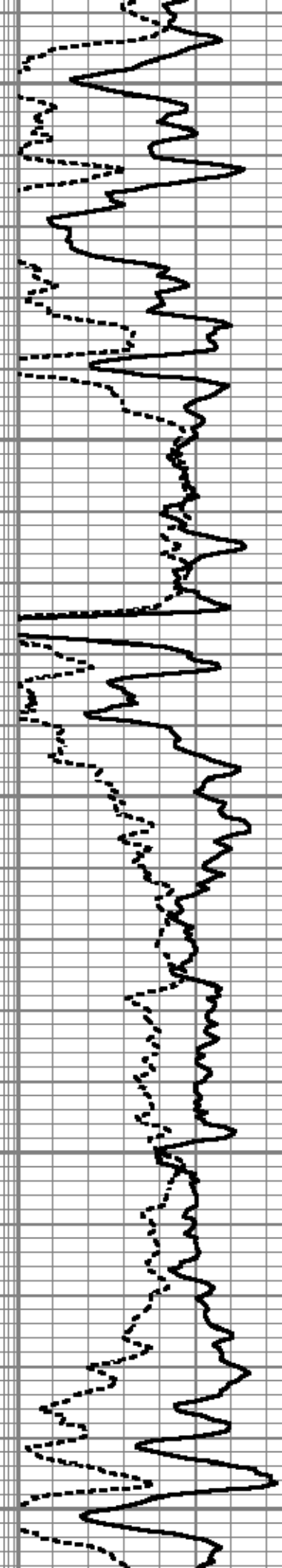


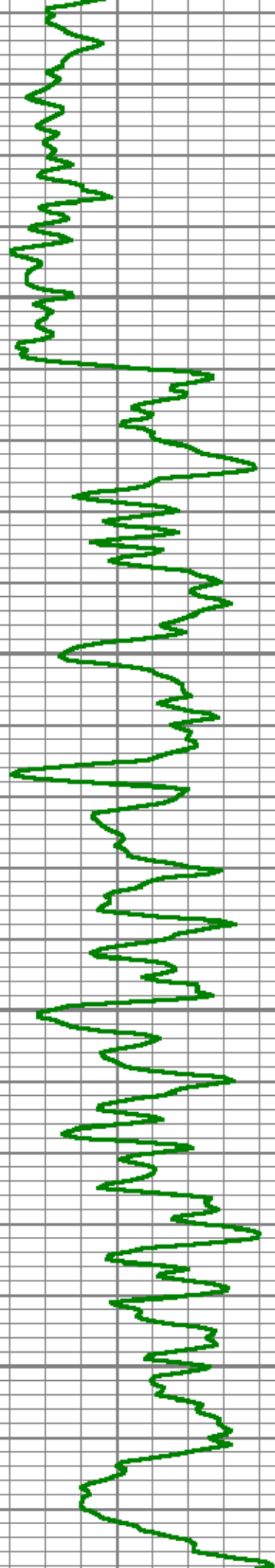


6500

6600

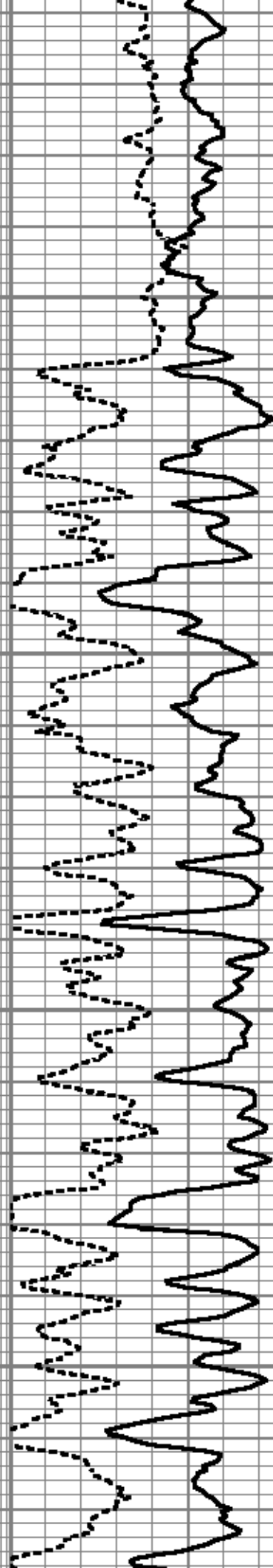
6700

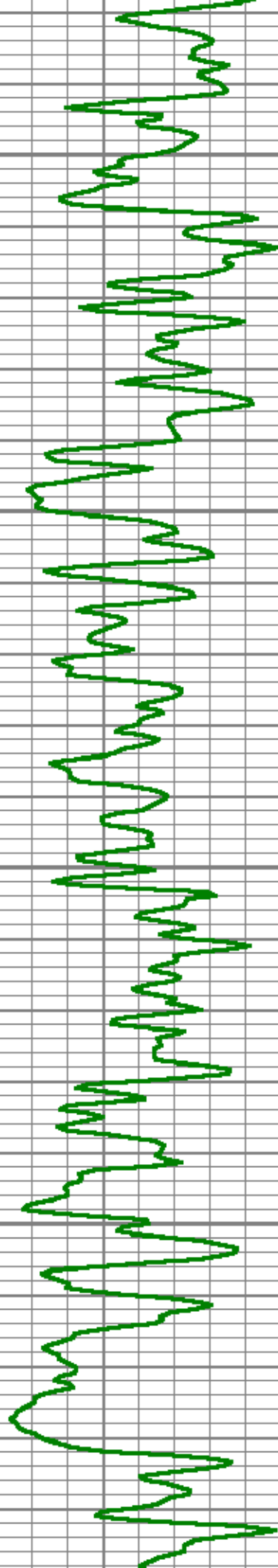




6800

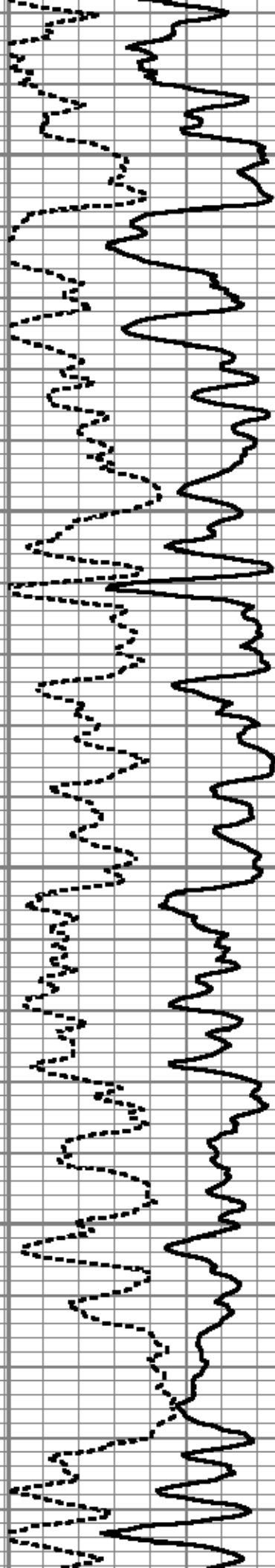
6900

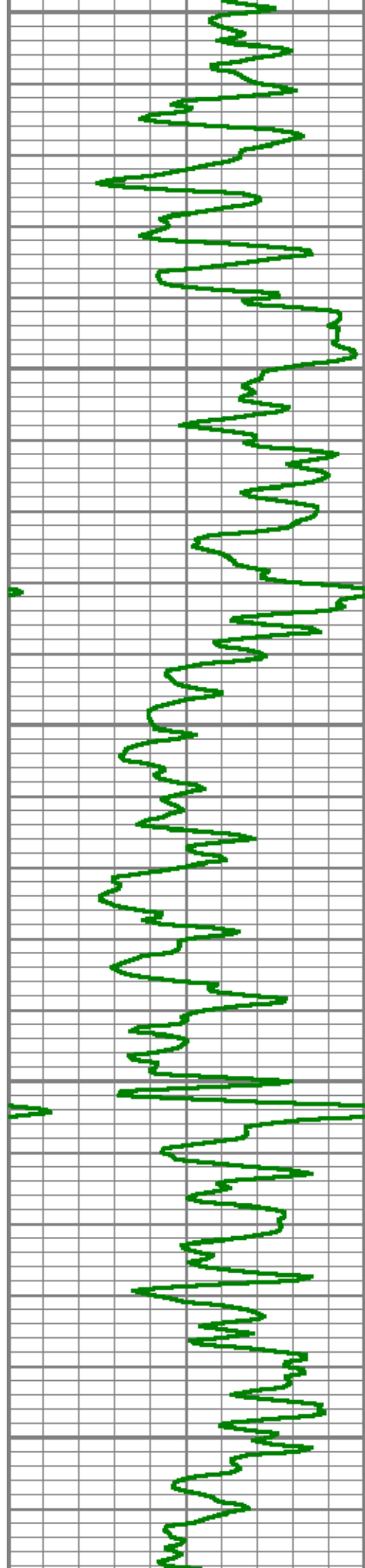




7000

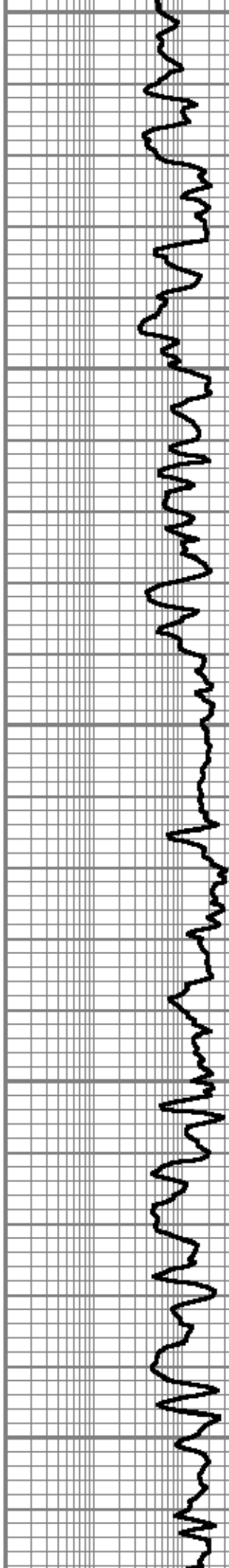
7100

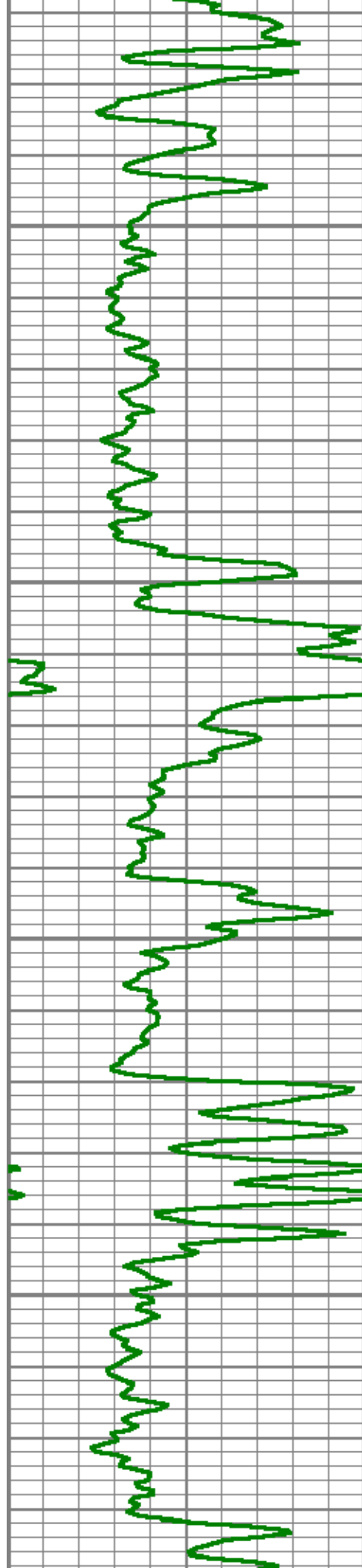




7200

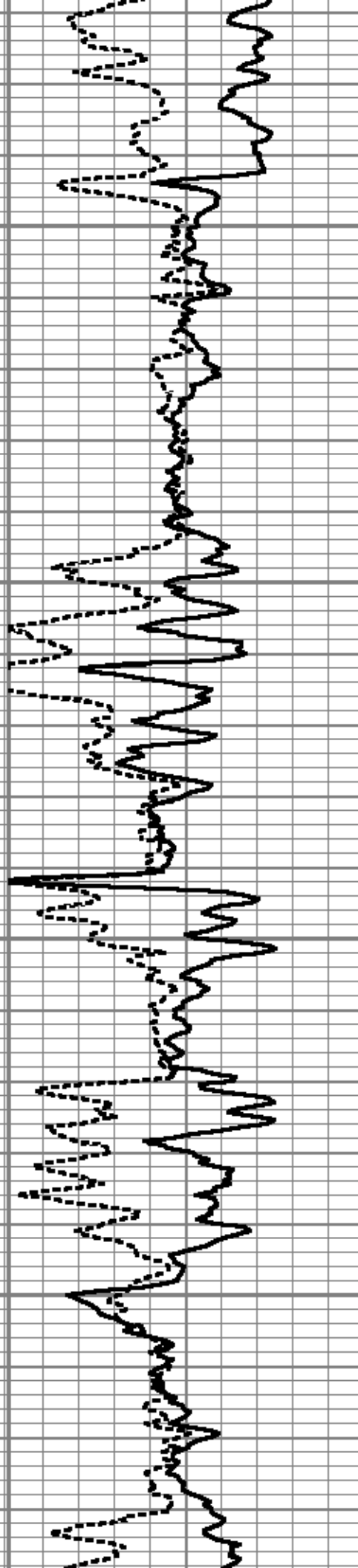
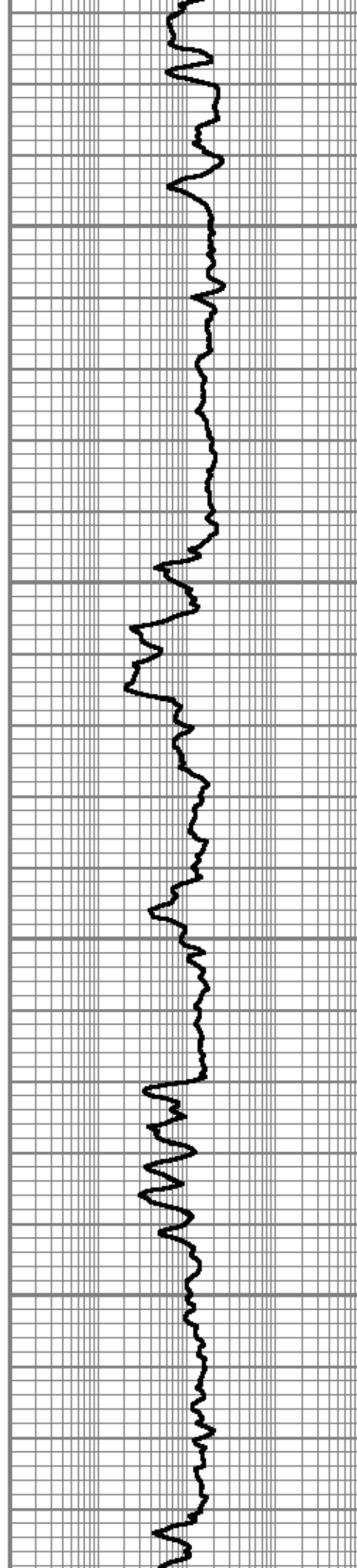
7300

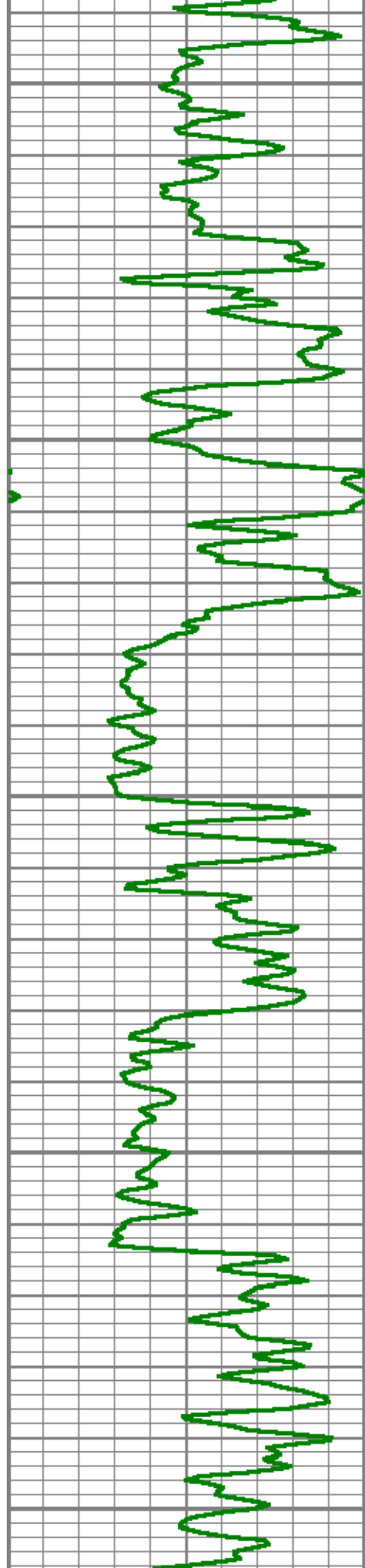




7400

7500

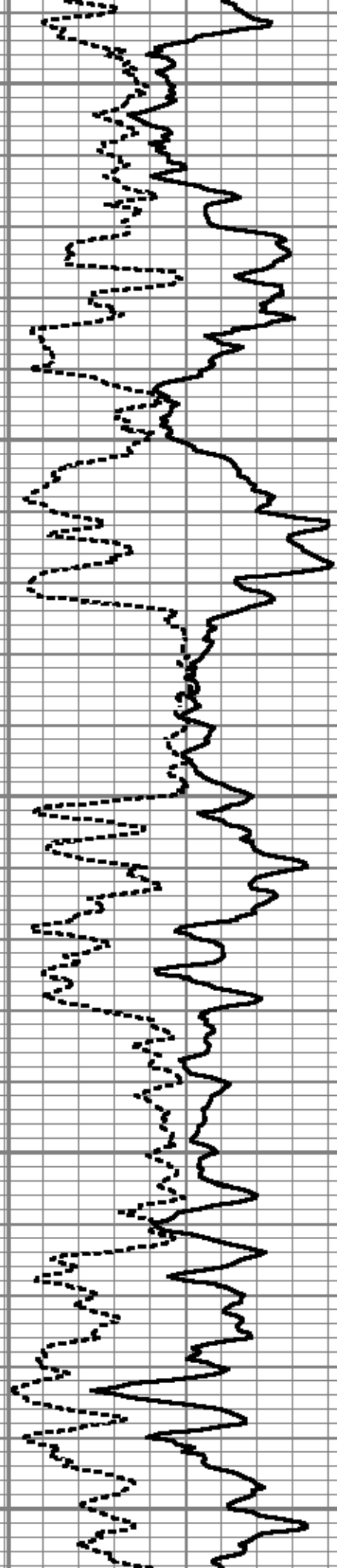
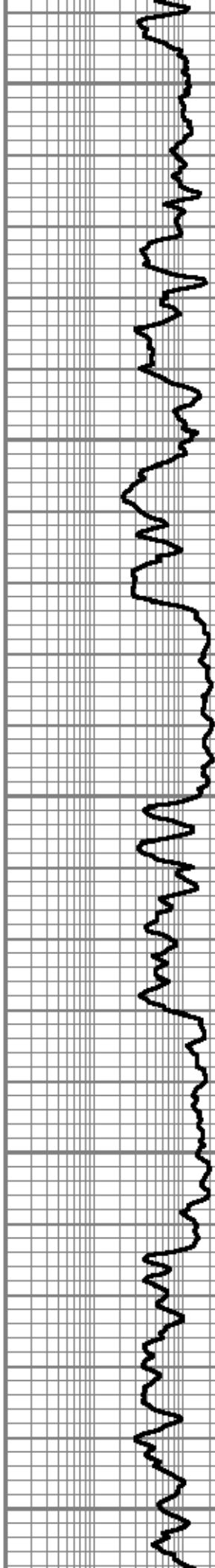


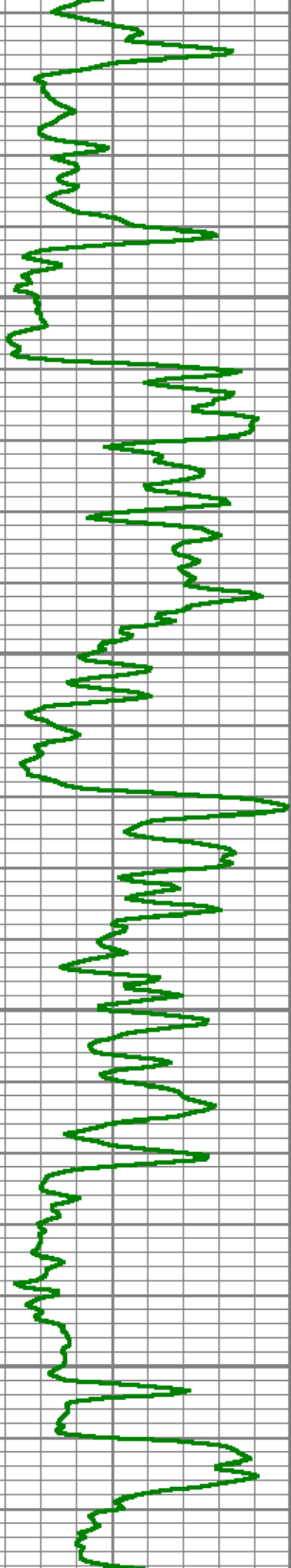


7600

7700

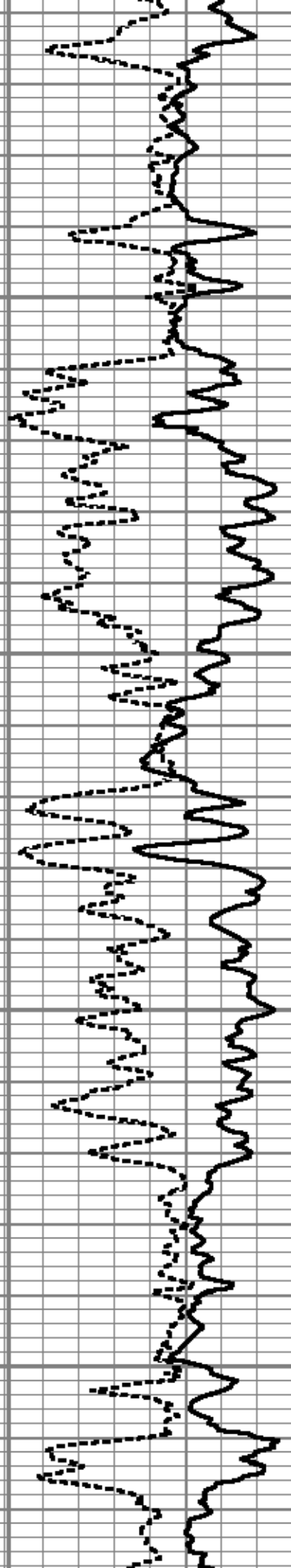
7800

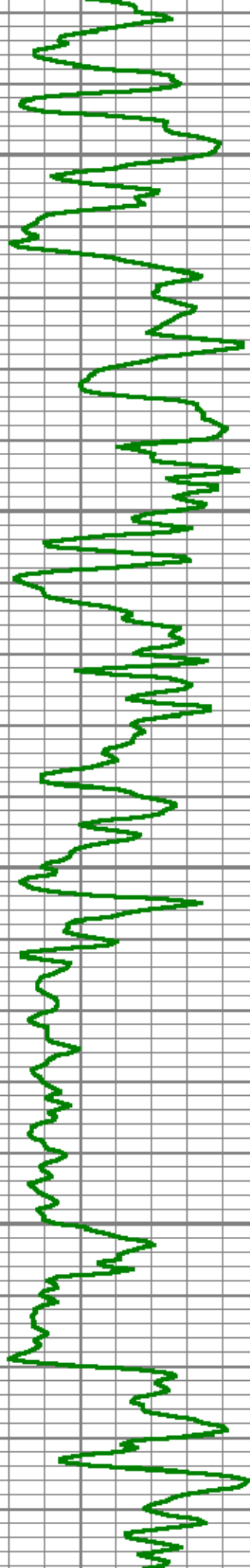




7900

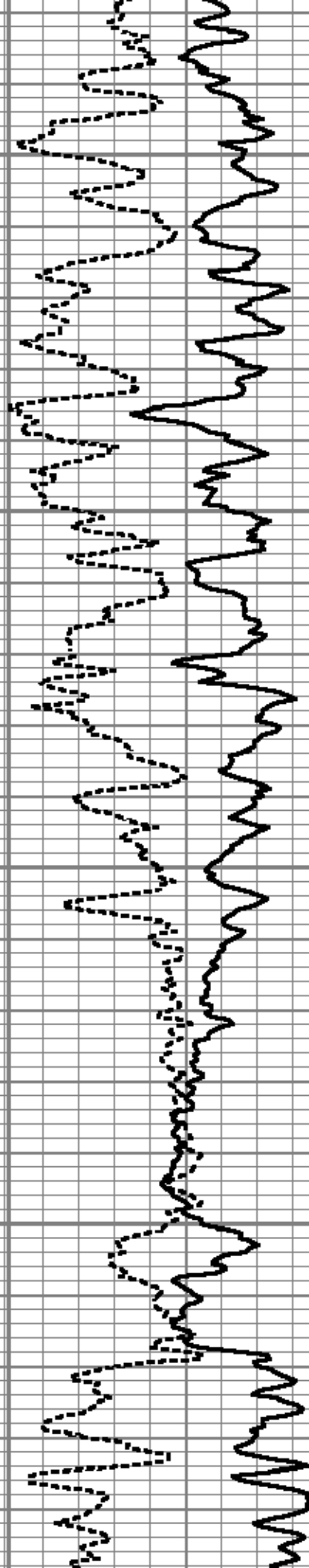
8000

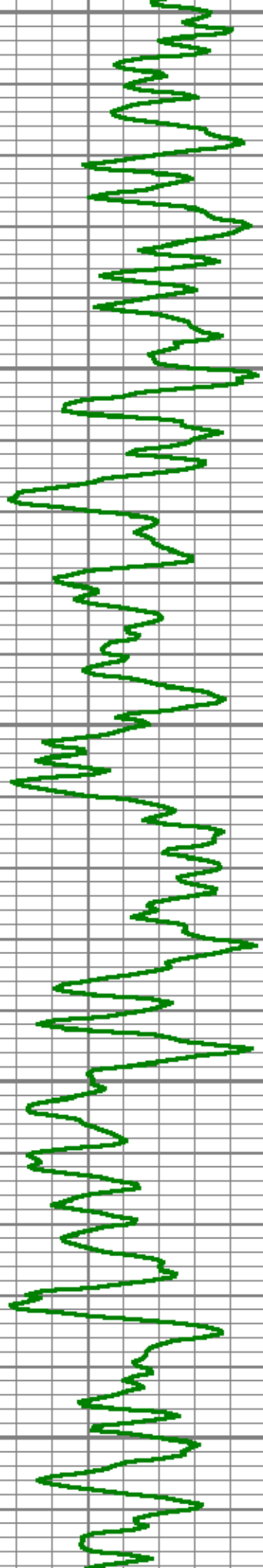




8100

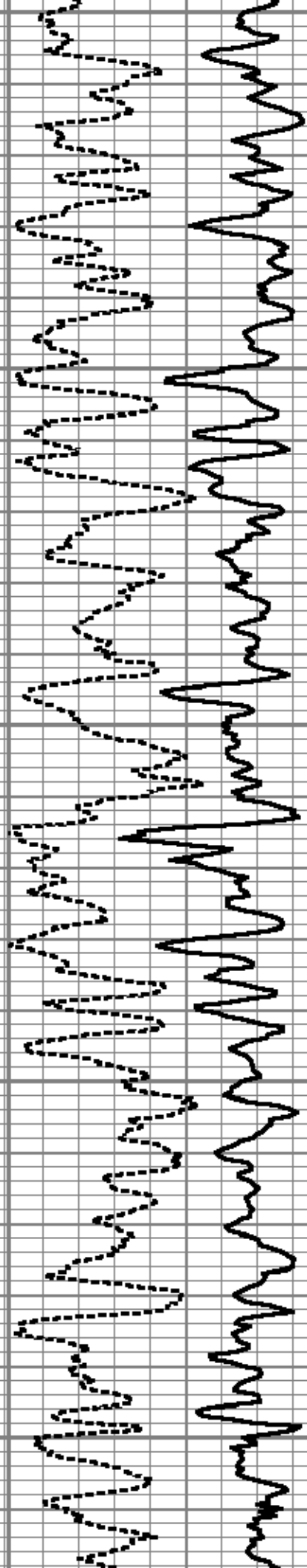
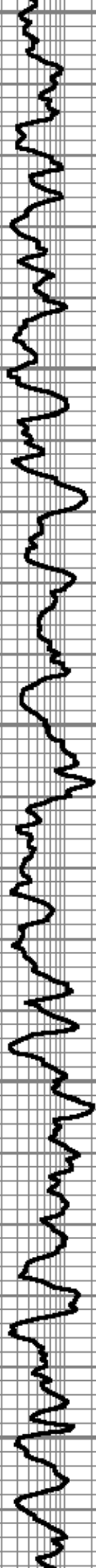
8200

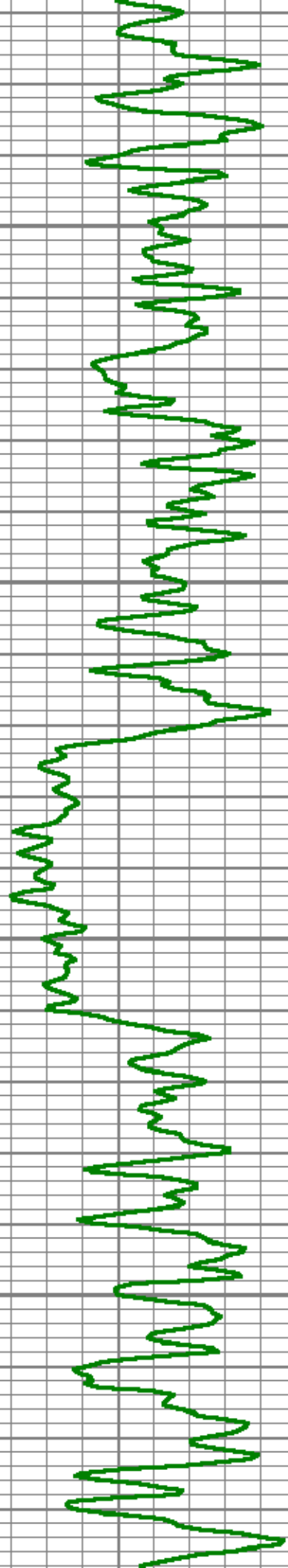




8300

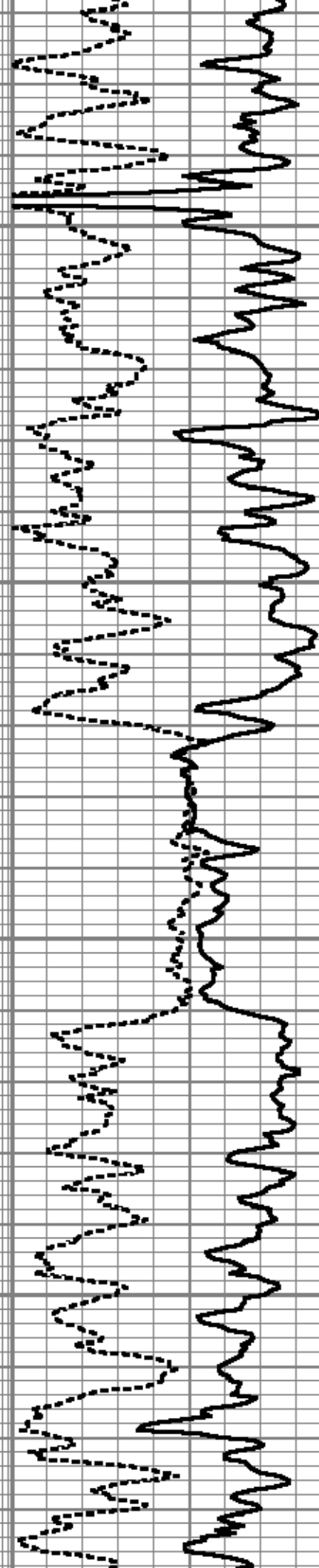
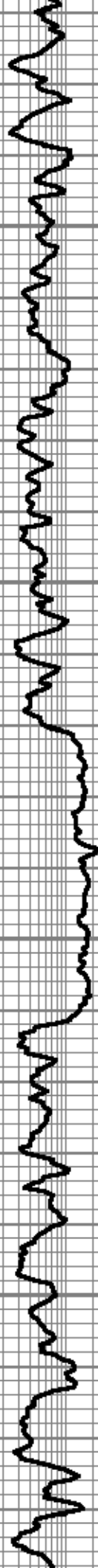
8400

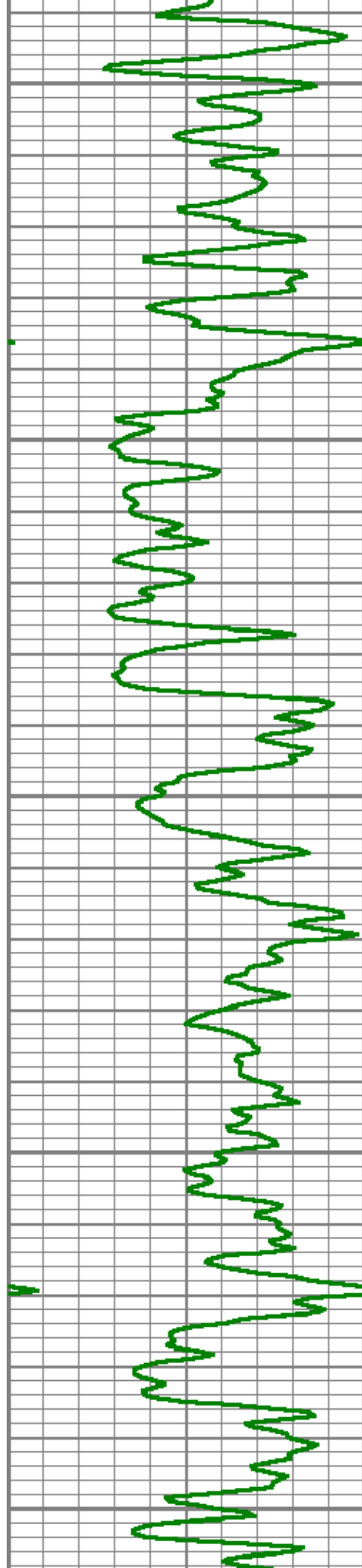




8500

8600

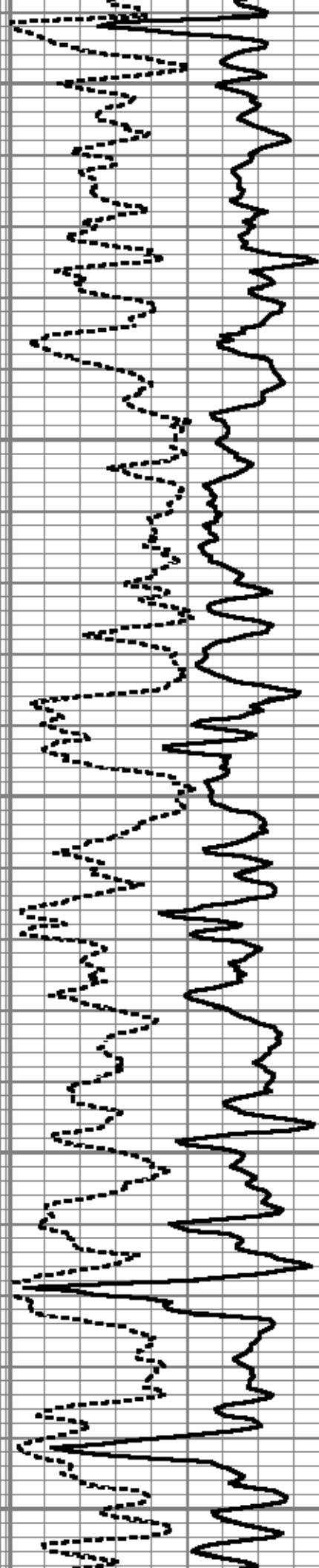
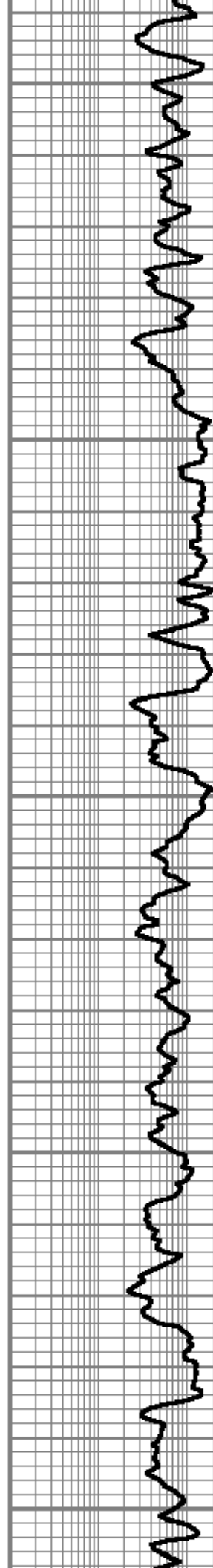


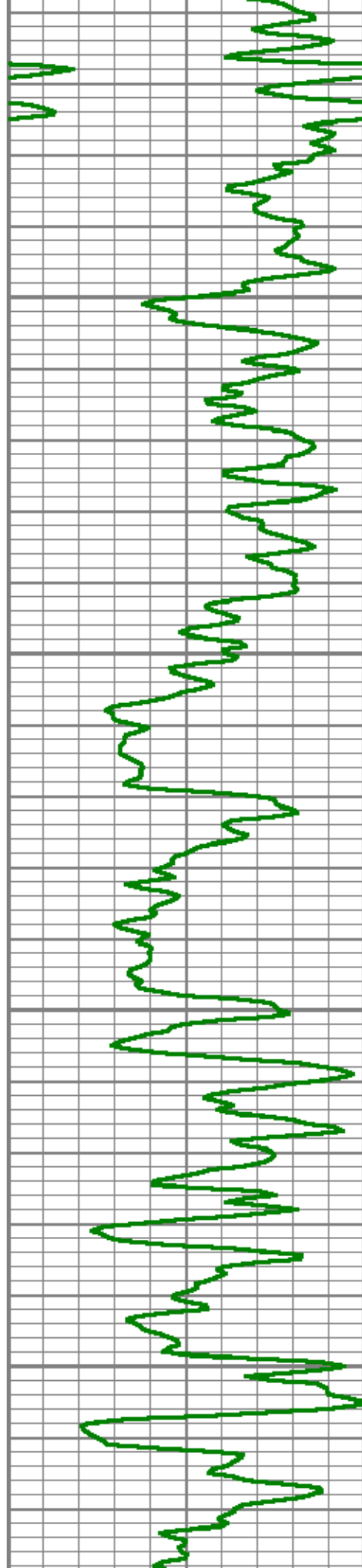


8700

8800

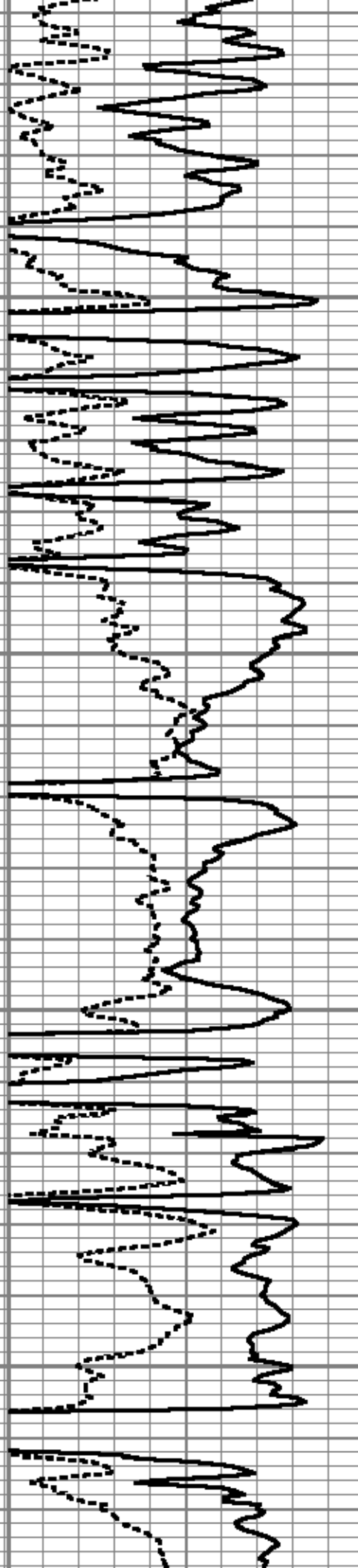
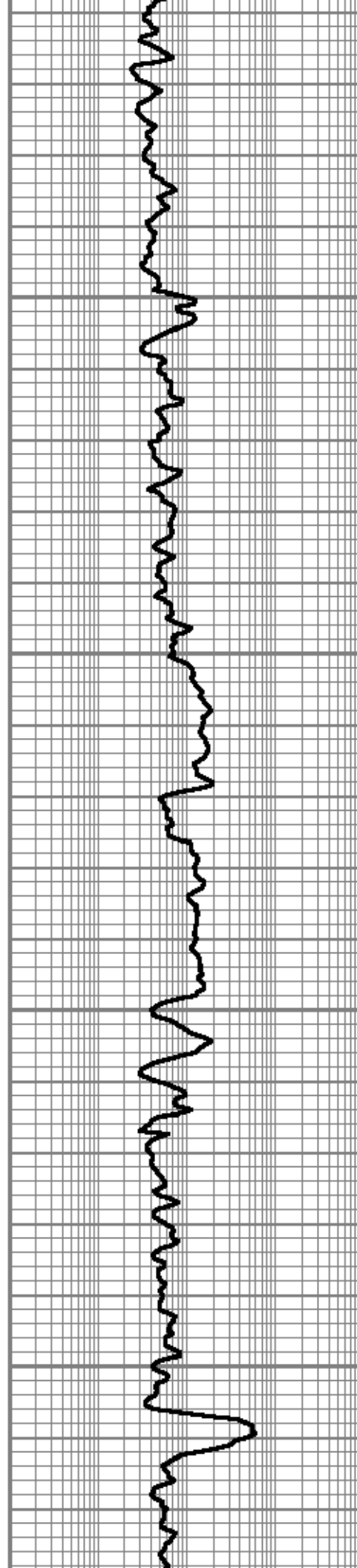
8900

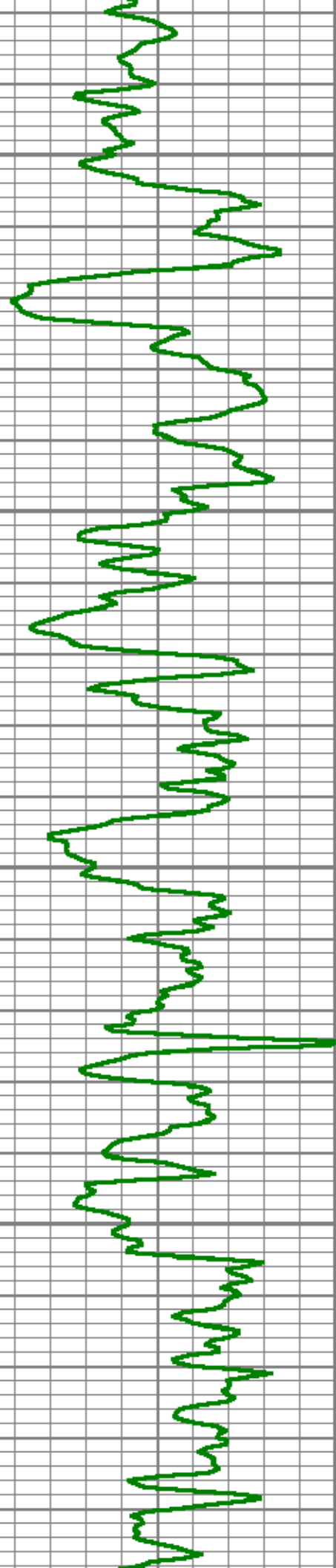




9000

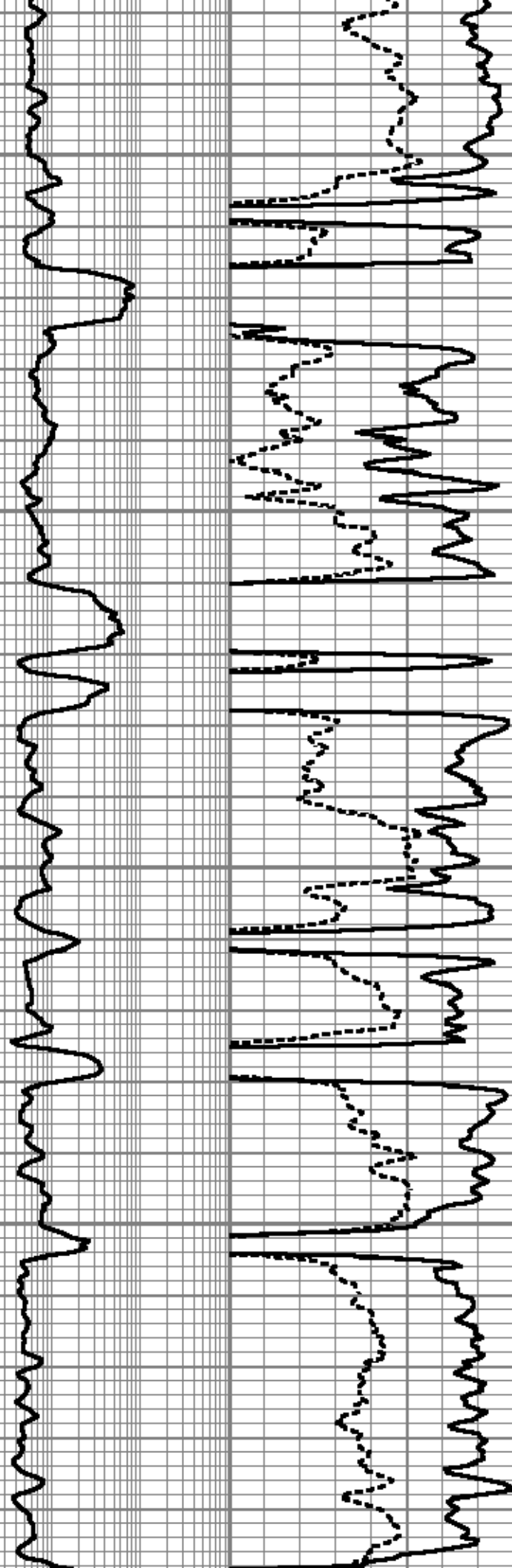
9100

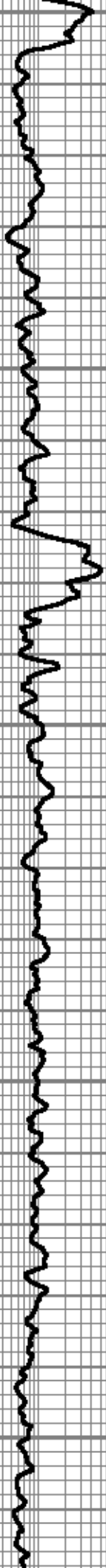
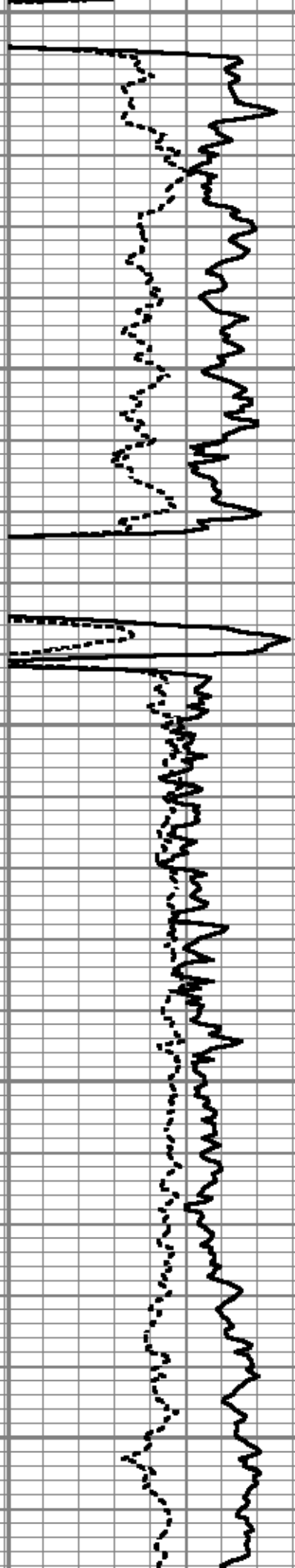




9200

9300

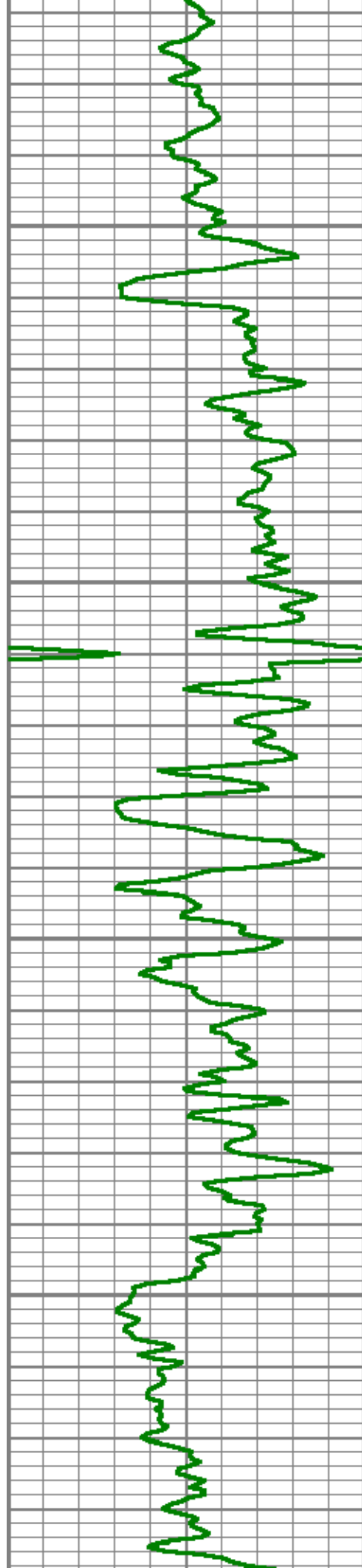




9400

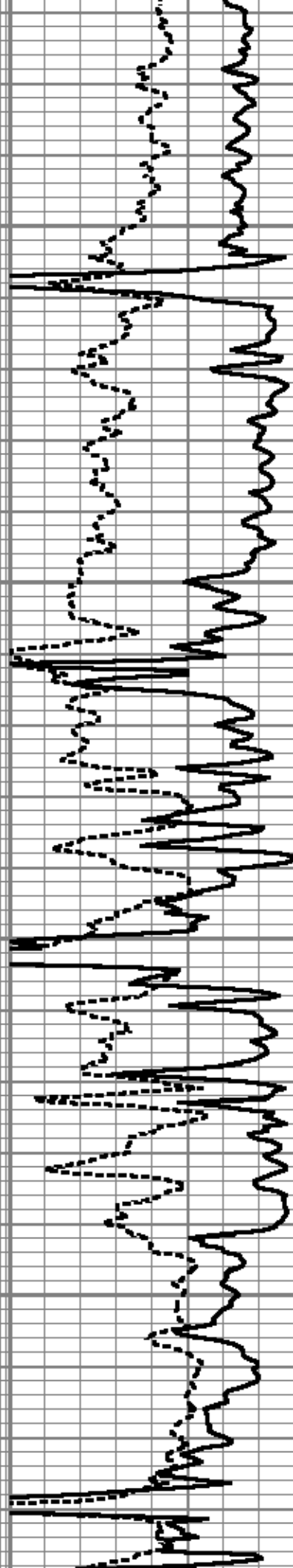
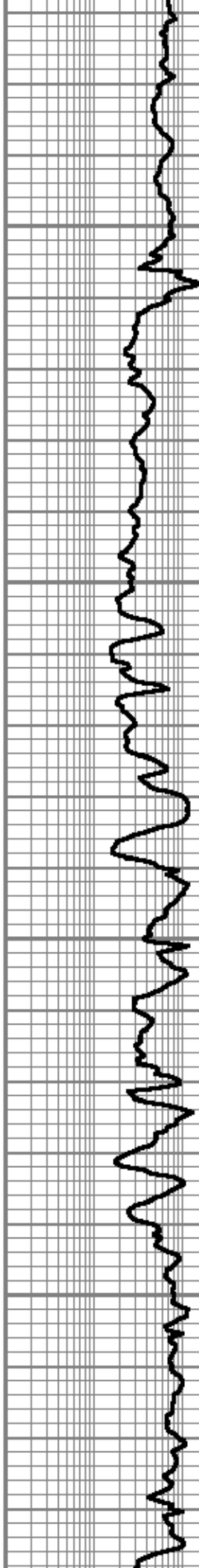
9500

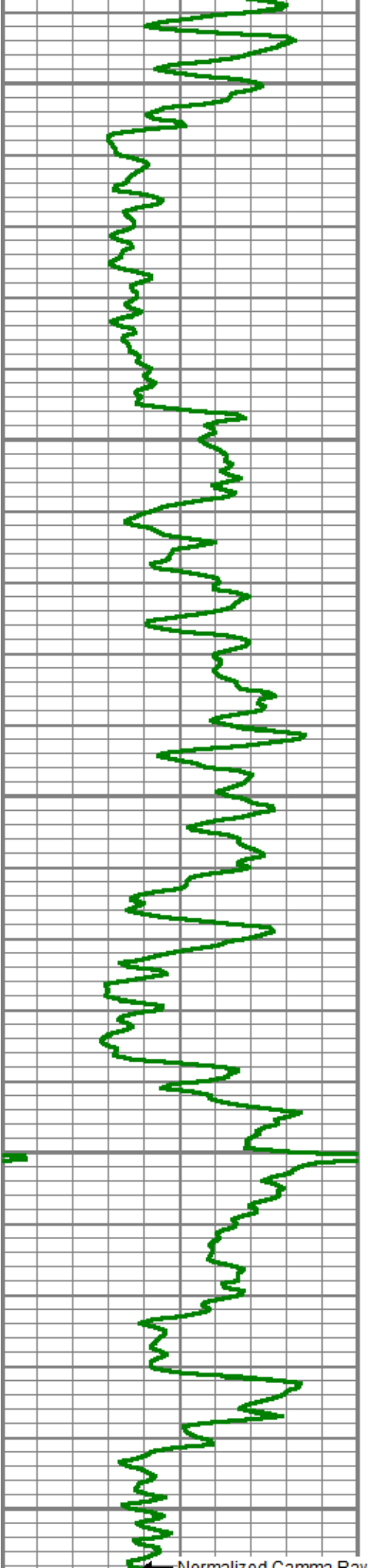




9600

9700



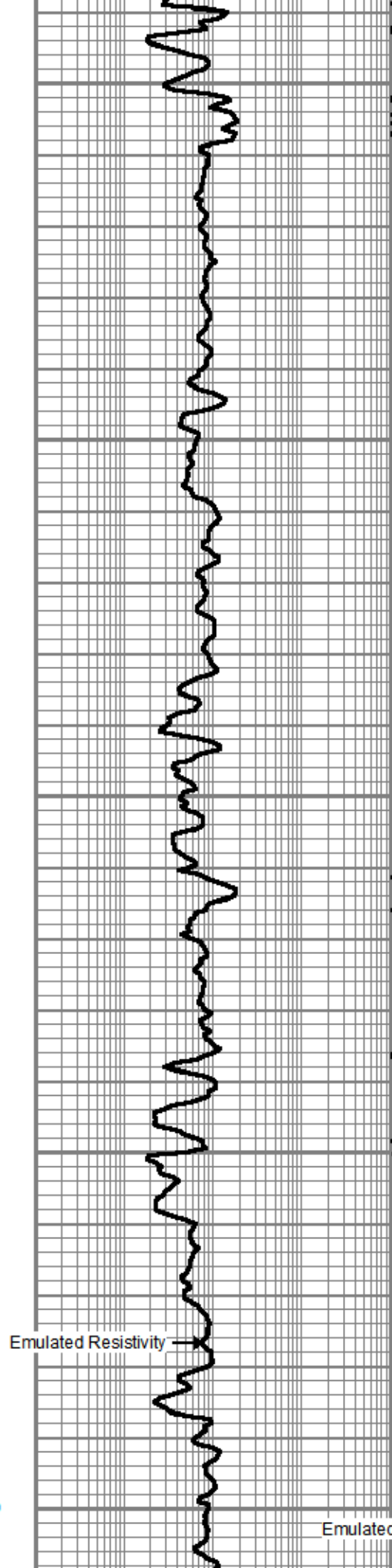


9800

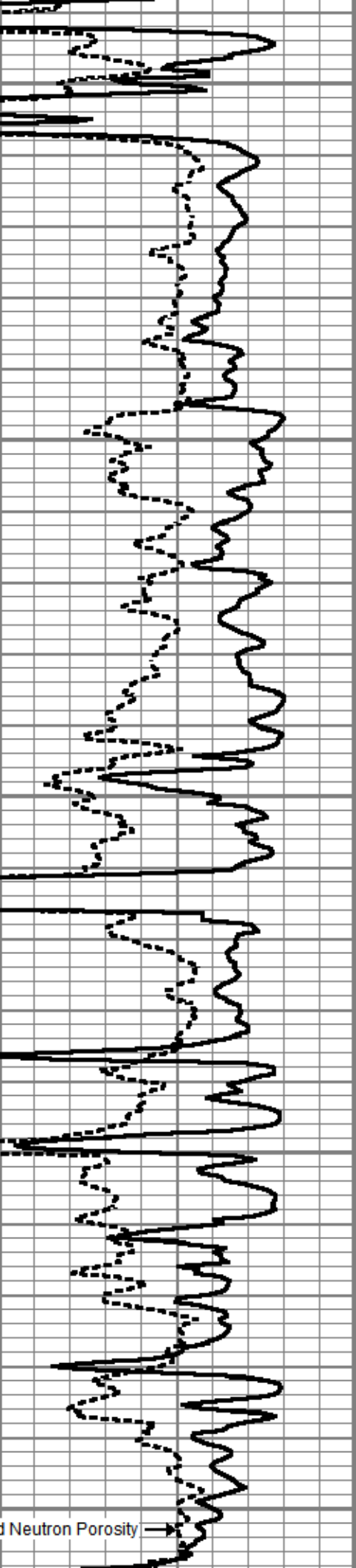
9900

10000

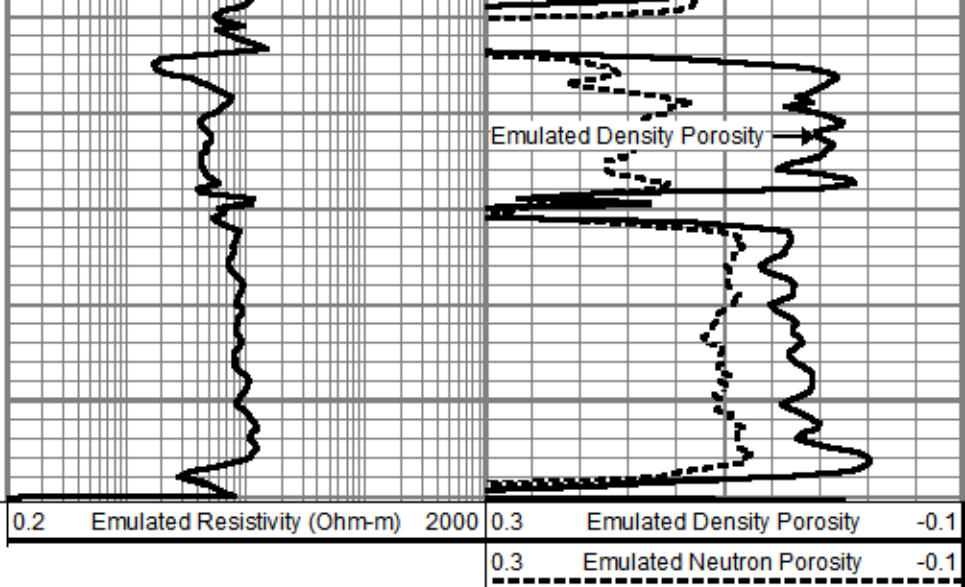
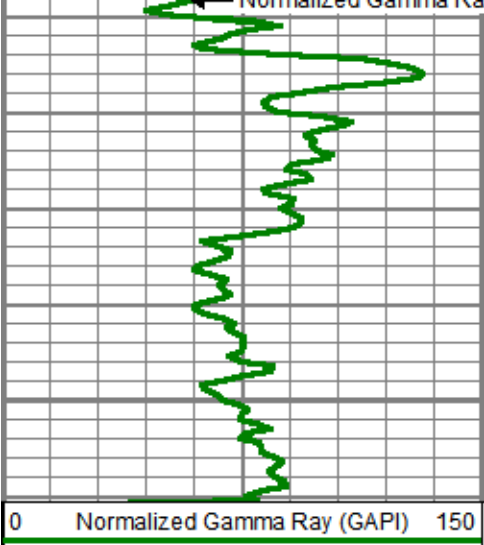
Normalized Gamma Ray



Emulated Resistivity



Emulated Neutron Porosity



Company Laramie Energy LLC
 Well CC Federal 0697-04-04E
 Field Grand Valley
 County Garfield
 State Colorado