

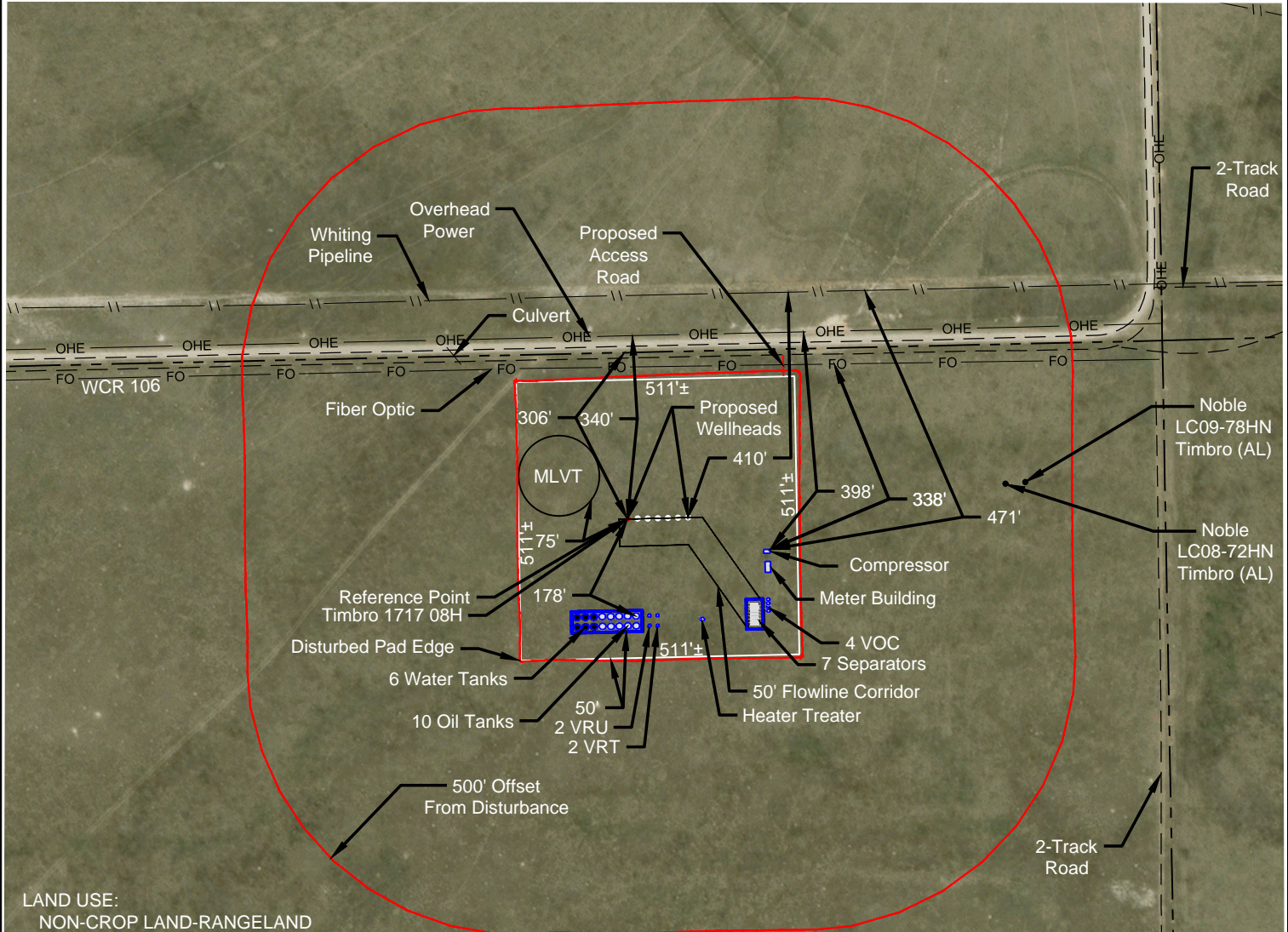
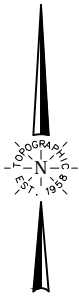
# LOCATION DRAWING

NE 1/4 NE 1/4 SECTION 17  
T9N R59W 6TH PM  
WELD COUNTY, COLORADO



SCALE: 1" = 300'

0' 150' 300'



LAND USE:  
NON-CROP LAND-RANGELAND  
NOXIOUS WEEDS: NO  
PAD DISTURBANCE ACREAGE:  
6.2± DRILLING OPERATIONS  
4.3± POST-INTERIM RECLAMATION

Cultural Distances:	From Closest Wells	From Production Facility Equipment
Property Line	N 306'±	N 367'± (Meter Building)
Public Road - CR 106	N 306'±	N 354'± (Meter Building)
Building	NE 1645'±	NE 1604'± (Meter Building)
Building Unit	NE 1592'±	NE 1558'± (Meter Building)
Railroad	5280'±	5280'±
Powerline	N 336'±	N 398'± (Meter Building)
Water Well	NE 2356'±	NE 2390'± (Meter Building)
School Facility	5280'±	5280'±
School Property Line	5280'±	5280'±
Child Care/Day Care	5280'±	5280'±

REFERENCE POINT
Latitude: 40.7569513
Longitude: -103.9961712
Footage: 987' FEL 306' FNL
Ground Elevations: 5010'
PDOP: 1.5 Date: 03/20/2018
Instrument Operator: Brent Garcia

VERDAD RESOURCES  
TIMBRO 1717  
JOB NO. 116051

MAPP	10/16/2019	REVISION:	
SHEET:	1 OF 1	INT	DATE
FILE:	LO_TIMBRO_1717_LOC_DRAWING_REV4		

