

# HALLIBURTON

iCem<sup>®</sup> Service

## **TERRA ENERGY PARTNERS**

United States of America, COLORADO

### **For: Terra**

Date: Saturday, June 29, 2019

### **RWF 14-17 Surface PJR**

API# 05-045-24033-00

Sincerely,

**Grand Junction Cement Engineering**

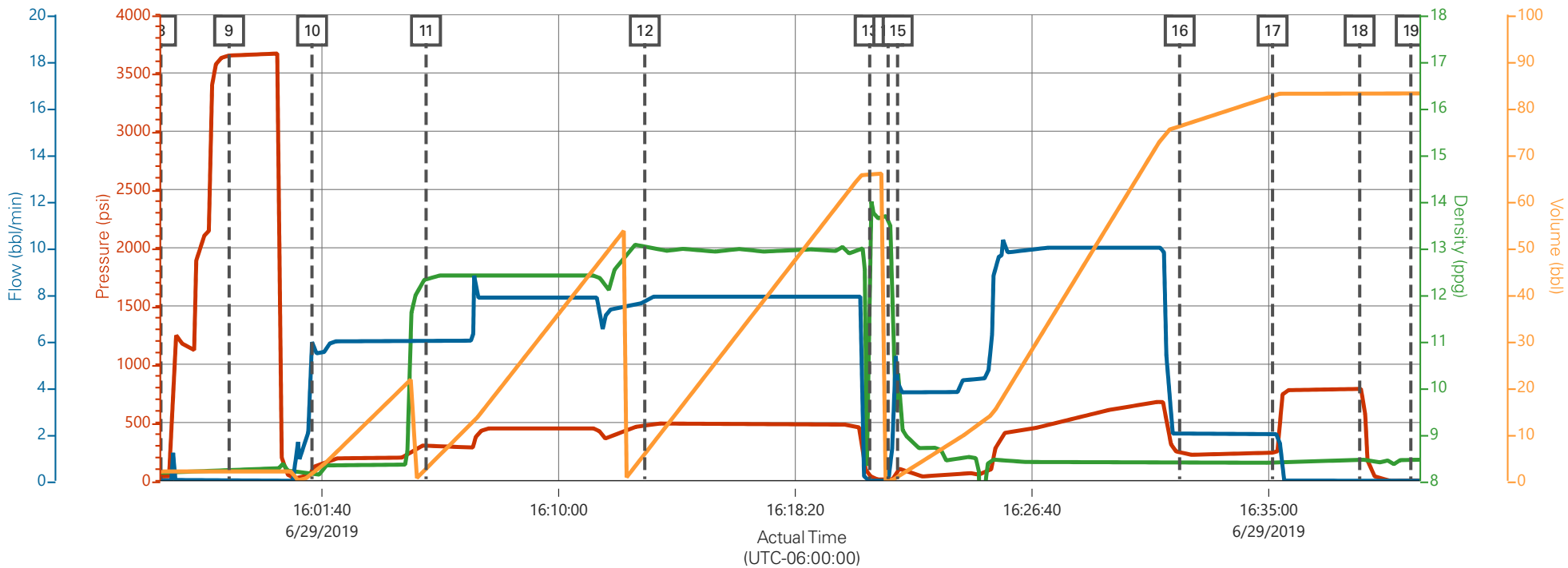
## 2.0 Real-Time Job Summary

## 2.1 Job Event Log

Type	Seq. No.	Graph Label	Date	Time	Source	DH Density (ppg)	Comb Pump Rate (bbl/min)	PS Pump Press (psi)	Pump Stg Tot (bbl)	Comments
Event	1	Call Out	6/29/2019	07:30:00	USER					
Event	2	Pre-Convoy Safety Meeting	6/29/2019	08:45:00	USER					JOURNEY MANAGEMENT COMPLETE, AS WELL AS JSA
Event	3	Crew Leave Yard	6/29/2019	09:00:00	USER					
Event	4	Arrive At Loc	6/29/2019	10:30:00	USER					JOURNEY MANAGEMENT CLOSED OUT. RIG RUNNING CASING
Event	5	Assessment Of Location Safety Meeting	6/29/2019	13:00:00	USER					
Event	6	Pre-Rig Up Safety Meeting	6/29/2019	13:30:00	USER					JSA COMPLETE
Event	7	Rig-Up Equipment	6/29/2019	13:45:00	USER					
Event	8	Other	6/29/2019	14:00:00	USER					WATER TEST: PH-7, CL-0, TEMP-63  WELL INFO: 9 5/8 36# CASING TOTAL 1108.27, TD-1115, S.J.-44.10, HOLE- 13.5". MUD#- 10.4
Event	9	Other	6/29/2019	14:10:00	USER					MUD SCALES CHECKED WITH WATER PRIOR TO JOB.
Event	10	Pre-Job Safety Meeting	6/29/2019	15:00:00	USER					JSA COMPLETE
Event	11	Start Job	6/29/2019	15:56:00	COM5					
Event	12	Test Lines	6/29/2019	15:58:24	USER			3655.00		3655 PSI

Event	13	Pump Spacer 1	6/29/2019	16:01:19	USER	8.33	6.00	192.00	20.0	FRESH WATER
Event	14	Pump Lead Cement	6/29/2019	16:05:20	USER	12.30	8.00	419.00	53.0	125 SKS VARICEM, 12.3 PPG, 2.38 FT3/SK, 13.77 GAL/SK
Event	15	Pump Tail Cement	6/29/2019	16:13:02	USER	12.80	8.00	467.00	65.8	175 SKS VARICEM, 12.8 PPG, 2.11 FT3/SK, 11.78 GAL/SK
Event	16	Shutdown	6/29/2019	16:20:57	USER					TO BUMP PLUG, AND WASH UP ON TOP OF PLUG
Event	17	Drop Top Plug	6/29/2019	16:21:36	USER					AWAY, USING POSITIVE DISPLACEMENT
Event	18	Pump Displacement	6/29/2019	16:21:56	USER	8.33	10.0	687.0	82.3	FRESH WATER
Event	19	Slow Rate	6/29/2019	16:31:52	USER	8.33	2.00	232.0	72.0	TO BUMP PLUG
Event	20	Bump Plug	6/29/2019	16:35:08	USER	8.33	2.00	242.00	82.3	PLUG BUMPED ON CALCULATED
Event	21	Check Floats	6/29/2019	16:38:12	USER			789.00		FLOATS HELD 0.5 BBLS BACK TO TRUCK
Event	22	End Job	6/29/2019	16:40:00	USER					GOOD CIRCULATION THROUGHOUT JOB, NO PIPE MOVEMENT, 22 GOOD BBLS OF CEMENT TO SURFACE
Event	23	Post-Job Safety Meeting (Pre Rig-Down)	6/29/2019	16:41:46	USER					
Event	24	Crew Leave Location	6/29/2019	17:30:00	USER					THANK YOU FOR USING HALLIBURTON CEMENT, JAMES LEIST AND CREW

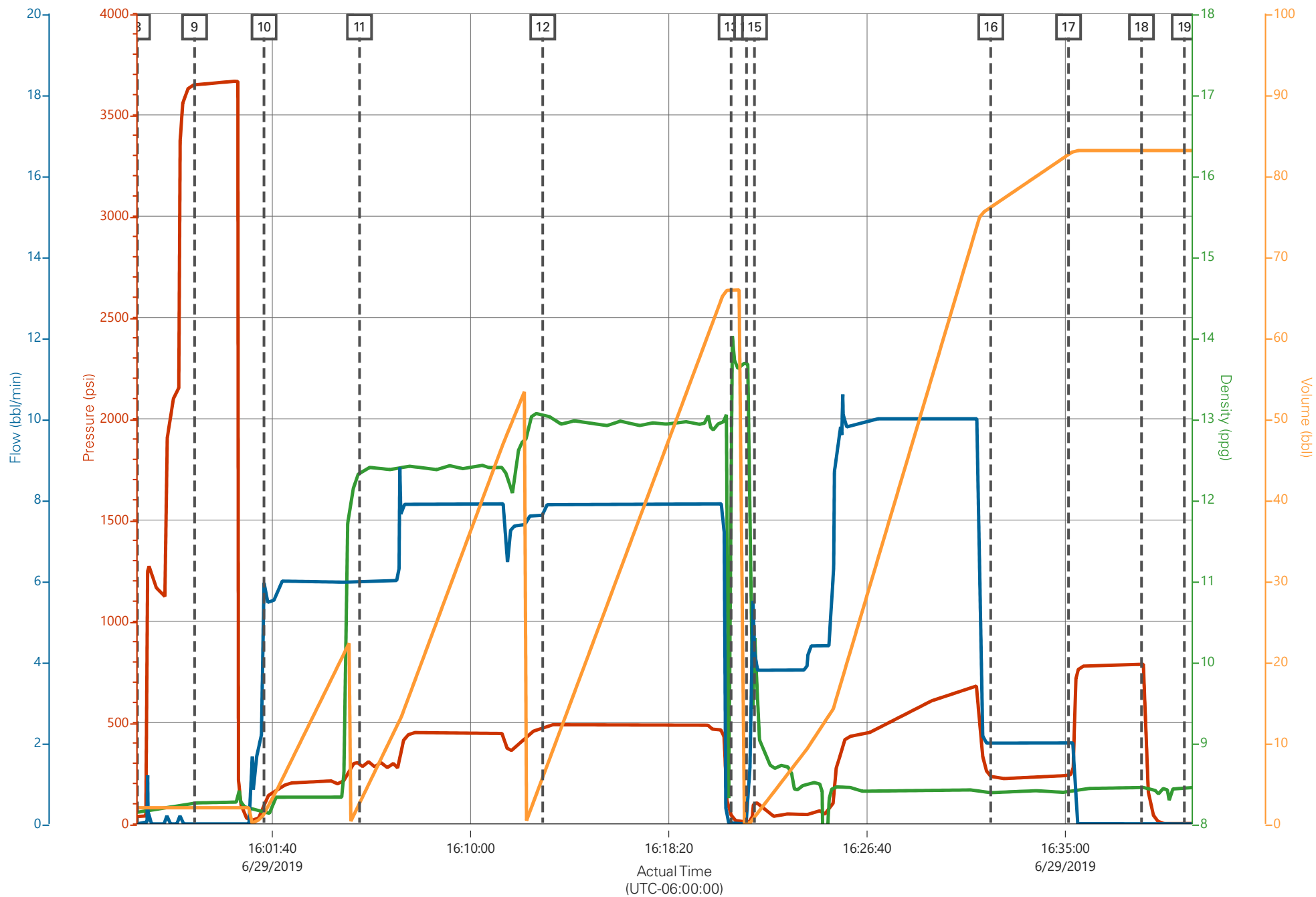
# TEP RWF 14-17 Surface



PS Pump Press (psi)    DH Density (ppg)    Comb Pump Rate (bbl/min)    Pump Stg Tot (bbl)

Description	Actual Time (UTC-06:00:00)	PS Pump Press (psi)	DH Density (ppg)	Comb Pump Rate (bbl/min)	Pump Stg Tot (bbl)	
8 Start Job	15:56:00	35.00	8.14	0.00	2.00	
9 Test Lines	15:58:24	3649.00	8.26	0.00	2.00	
10 Pump Spacer 1	16:01:19	95.00	8.14	6.00	1.20	
11 Pump Lead Cement	16:05:20	287.00	12.33	6.00	2.50	
12 Pump Tail Cement	16:13:02	467.00	13.04	7.60	5.60	
13 Shutdown	16:20:57	44.00	13.43	0.00	65.90	
14 Drop Top Plug	16:21:36	5.00	13.67	0.00	0.00	
15 Pump Displacement	16:21:56	113.00	10.28	4.90	0.90	
16 Slow Rate	16:31:52	232.00	8.37	2.00	76.10	
17 Bump Plug	16:35:08	242.00	8.39	2.00	82.60	
18 Check Floats	16:38:12	789.00	8.45	0.00	83.10	
19 End Job	16:40:00	-1.00	8.45	0.00	83.10	

# TEP RWF 14-17 Surface



PS Pump Press (psi)

DH Density (ppg)

Comb Pump Rate (bbl/min)

Pump Stg Tot (bbl)