

# HALLIBURTON

iCem<sup>®</sup> Service

## **TERRA ENERGY PARTNERS**

United States of America, COLORADO

### **For: Terra**

Date: Friday, August 02, 2019

### **RWF 43-7 Surface PJR**

API# 05-045-24029-00

Sincerely,

**Grand Junction Cement Engineering**

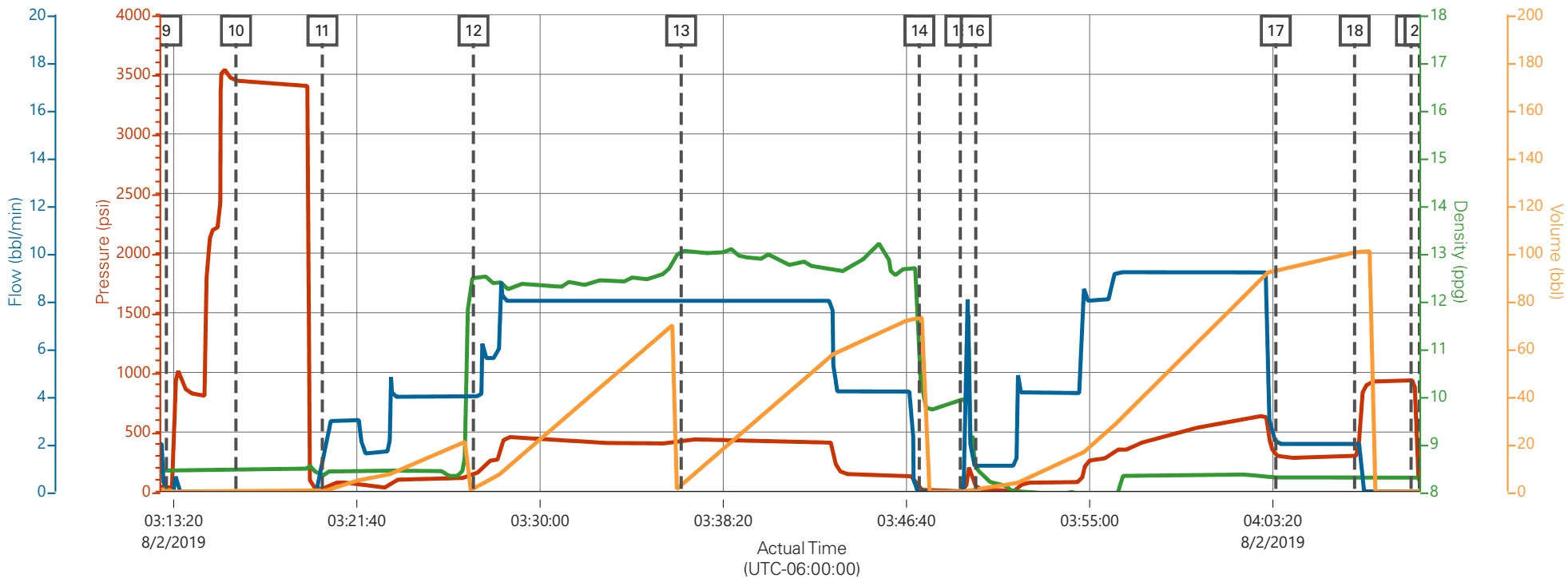
## 2.0 Real-Time Job Summary

## 2.1 Job Event Log

Type	Seq. No.	Graph Label	Date	Time	Source	DH Density (ppg)	Comb Pump Rate (bbl/min)	PS Pump Press (psi)	Pump Stg Tot (bbl)	Comments
Event	1	Call Out	8/1/2019	16:00:00	USER					
Event	2	Pre-Convoy Safety Meeting	8/1/2019	19:30:00	USER					JOURNEY MANAGEMENT COMPLETE, AS WELL AS JSA
Event	3	Crew Leave Yard	8/1/2019	20:00:00	USER					
Event	4	Arrive At Loc	8/1/2019	21:00:00	USER					JOURNEY MANAGEMENT CLOSED OUT. RIG POOH W/ DP
Event	5	Assessment Of Location Safety Meeting	8/1/2019	21:10:00	USER					
Event	6	Pre-Rig Up Safety Meeting	8/1/2019	21:20:00	USER					JSA COMPLETE
Event	7	Rig-Up Equipment	8/1/2019	21:30:00	USER					
Event	8	Other	8/1/2019	22:00:00	USER					WATER TEST: PH-7, CL-0, TEMP-68  WELL INFO: 9 5/8 36# CASING TOTAL 1339.87, TD-1345, S.J.-41.32, HOLE- 13.5". MUD#- 9.4
Event	9	Other	8/1/2019	22:10:00	USER					MUD SCALES CHECKED WITH WATER PRIOR TO JOB.
Event	10	Pre-Job Safety Meeting	8/2/2019	03:00:00	USER					JSA COMPLETE
Event	11	Prime Pumps	8/2/2019	03:12:06	USER					FRESH WATER
Event	12	Start Job	8/2/2019	03:13:00	USER					

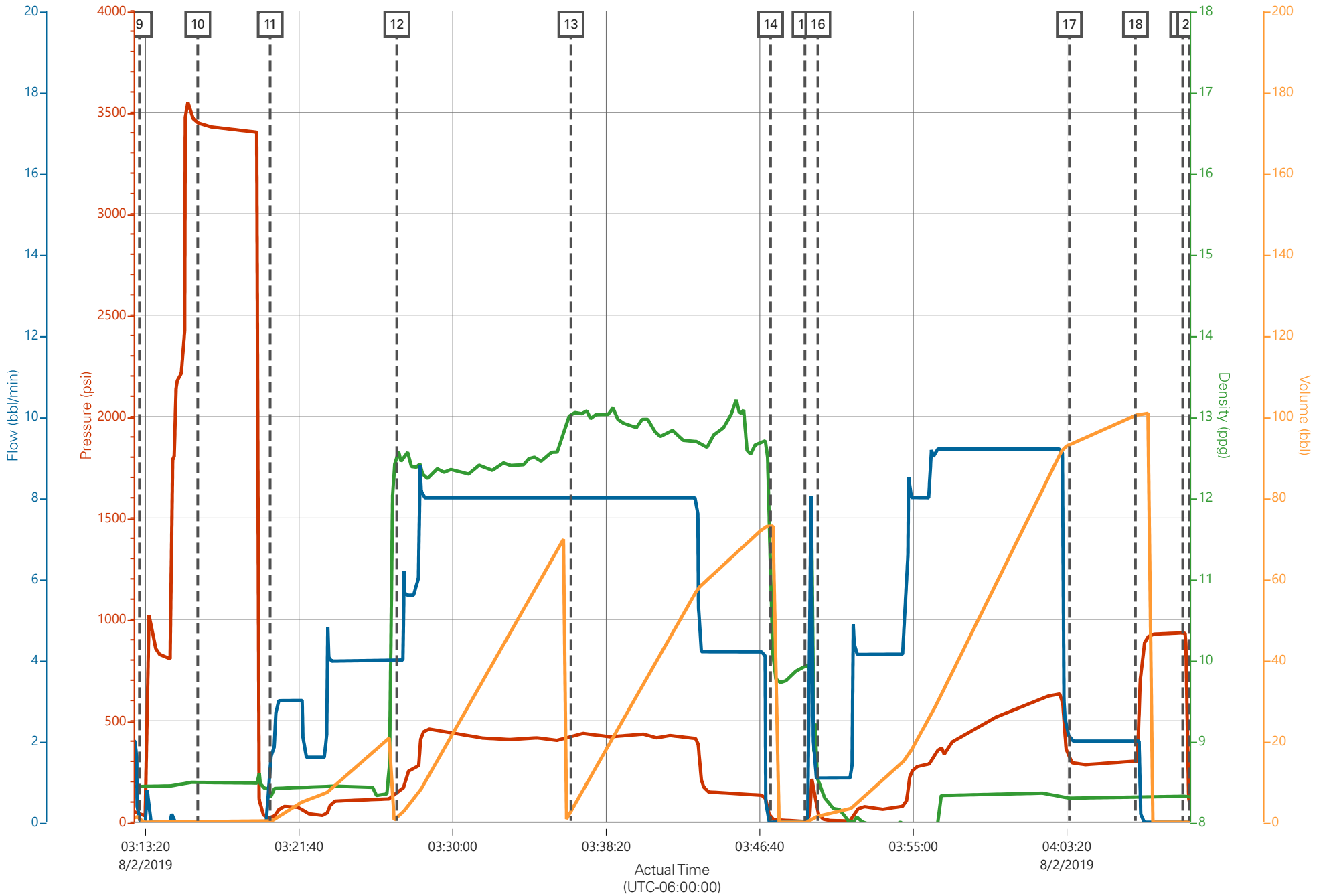
Event	13	Test Lines	8/2/2019	03:16:10	USER			3448.00		3448 PSI
Event	14	Pump Spacer 1	8/2/2019	03:20:06	USER	8.33	4.00	116.0	20.0	FRESH WATER
Event	15	Pump Lead Cement	8/2/2019	03:26:58	USER	12.30	8.00	450.0	72.0	170 SKS VARICEM, 12.3 PPG, 2.38 FT3/SK, 13.77 GAL/SK
Event	16	Pump Tail Cement	8/2/2019	03:36:25	USER	12.8	8.00	428.00	65.8	175 SKS VARICEM, 12.8 PPG, 2.11 FT3/SK, 11.78 GAL/SK
Event	17	Shutdown	8/2/2019	03:47:15	USER					TO BUMP PLUG, AND WASH UP ON TOP OF PLUG
Event	18	Drop Top Plug	8/2/2019	03:49:07	USER					AWAY, USING POSTIVE DISPLACEMENT
Event	19	Pump Displacement	8/2/2019	03:49:49	USER	8.33	10.0	640.0	100.4	FRESH WATER
Event	20	Slow Rate	8/2/2019	04:03:28	USER	8.33	2.00	305.00	90.0	TO BUMP PLUG
Event	21	Bump Plug	8/2/2019	04:07:03	USER	8.33	2.00	298.00	100.4	PLUG BUMPED ON CALCULATED
Event	22	Check Floats	8/2/2019	04:09:37	USER			934.00		FLOATS HELD 0.5 BBLS BACK TO TRUCK
Event	23	End Job	8/2/2019	04:10:00	USER					GOOD CIRCULATION THROUGHOUT JOB, NO PIPE MOVEMENT, 34 GOOD BBLS OF CEMENT TO SURFACE
Event	24	Post-Job Safety Meeting (Pre Rig-Down)	8/2/2019	04:22:11	USER					
Event	25	Crew Leave Location	8/2/2019	05:10:00	USER					THANK YOU FOR USING HALLIBURTON CEMENT, JAMES LEIST AND CREW

# TEP RWF 43-7 Surface



Description	Actual Time (UTC-06:00:00)	PS Pump Press (psi)	DH Density (ppg)	Comb Pump Rate (bbl/min)	Pump Stg Tot (bbl)
9 Start Job	03:13:00	40.00	8.44	0.00	1.40
10 Test Lines	03:16:10	3448.00	8.49	0.00	0.00
11 Pump Spacer 1	03:20:06	23.00	8.26	1.60	0.20
12 Pump Lead Cement	03:26:58	156.00	12.51	4.00	1.20
13 Pump Tail Cement	03:36:25	428.00	13.02	8.00	2.70
14 Shutdown	03:47:15	24.00	10.78	0.00	73.00
15 Drop Top Plug	03:49:07	3.00	9.93	0.00	0.00
16 Pump Displacement	03:49:49	42.00	8.49	1.10	1.50
17 Slow Rate	04:03:28	305.00	8.30	2.10	93.10
18 Bump Plug	04:07:03	298.00	8.30	2.00	100.30
19 Check Floats	04:09:37	934.00	8.32	0.00	0.00
20 End Job	04:10:00	82.00	8.29	0.00	0.00

# TEP RWF 43-7 Surface



PS Pump Press (psi)

DH Density (ppg)

Comb Pump Rate (bbl/min)

Pump Stg Tot (bbl)