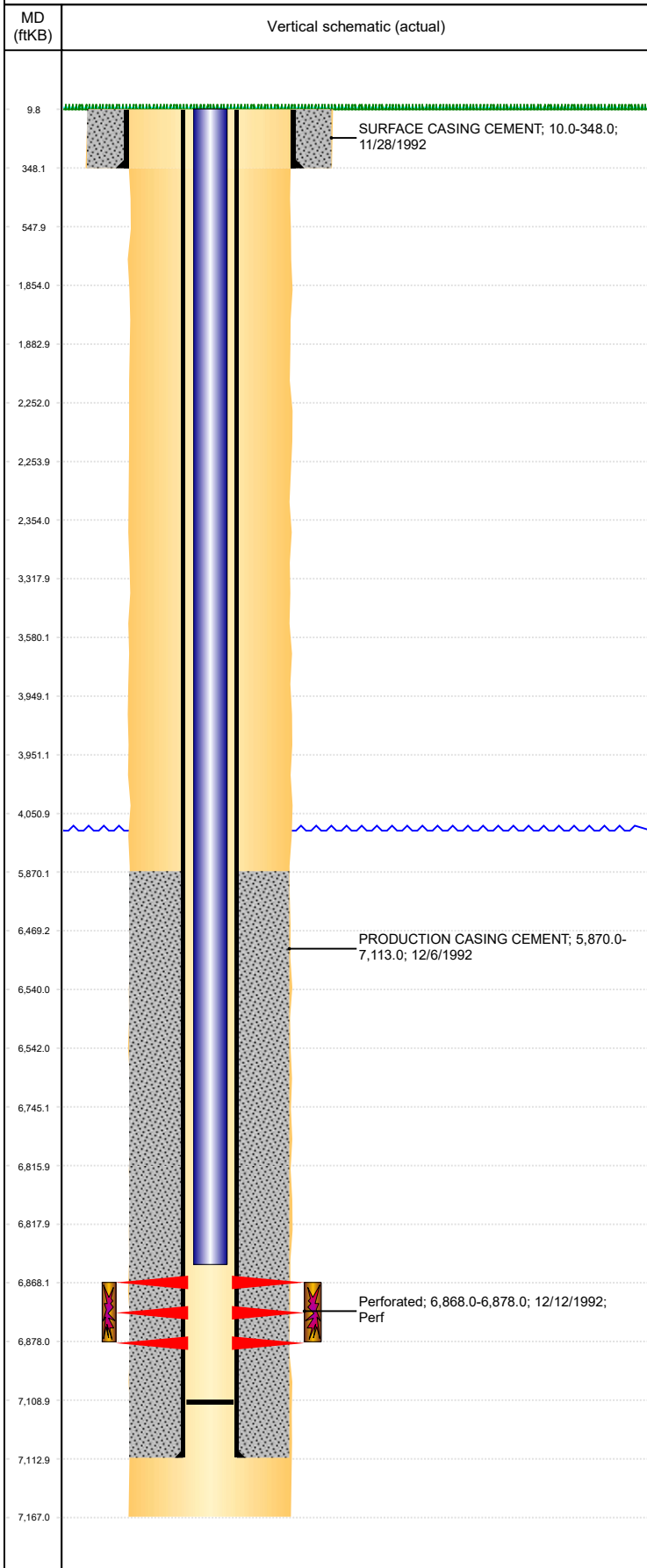


Well Name: SINJIN E36-11

VERTICAL, ORIGINAL HOLE, 10/17/2019 9:26:21 AM



Well Header									
API 05-123-16305		Business Unit DJ BASIN			District 15		Well Config VERTICAL		
KB - GL / MSL (ft... 10.00		Spud Date 11/28/1992		P & A Date		Well Production Status PR			SoRT No
Comment TD DISCREPANCY: ST 7070', LOGGER DEPTH ON DUAL INDUCTION LOG 7167'. PROD CSG SET DEPTH DISCREPANCY: ST 7154', DRL RPT 7113'.									
Surface Location (Congressional)									
Qtr 3 NE	Qtr 4 SW	Section 36	Twnshp 6	Twnsh... N	Range 65	Rng E/... W	Actual Latitude (°) 40.44057024	Actual Longitude (°) -104.61320319	
Wellbore Sections									
Section Des			Size (in)			Act Top, MD (ftKB)		Act Btm, MD (ftKB)	
SURFACE			12 1/4			10		348	
PRODUCTION			7 7/8			348		7,167	
Casing Strings									
Csg Des		Run Date		OD (in)	Wt/Len (lb/ft)	Grade	Top, MD (ftKB)	MD (ftKB)	
Surface		11/28/1992		8 5/8	24.00	J-55	10.0	348.0	
Production		12/6/1992		2 7/8	6.50	N-80	10.0	7,113.0	
Cement									
Des				Start Date		Top (ftKB)		Btm (ftKB)	
SURFACE CASING CEMENT				11/28/1992		10.0		348.0	
PRODUCTION CASING CEMENT				12/6/1992		5,870.0		7,113.0	
Zone Statuses									
Zone Name	Status Date	Status	Fluid Type	Job				Prod Method	
CODELL	1/4/1993	PR		DRILLING/COMPLETION - ORIGINAL, 11/28/199...					
Perforation Data									
Linked Zone		Bnch/Stg	Entered Shot Total	Top (ftKB)		Btm (ftKB)		Date	
CODELL, ORIGINAL HOLE			40	6,868.00		6,878.00		12/12/1992	
Stimulation Intervals									
Zone			Start Date			Top (ftKB)		Btm (ftKB)	
CODELL, ORIGINAL HOLE			12/17/1992			6,868.0		6,878.0	
Other In Hole									
Run Date		Des				OD (in)	Top (ftKB)	Btm (ftKB)	
3/20/2019		Plunger Lift				1.265			
Logs									
Date		Type				Top, MD (ftKB)		Btm, MD (ftKB)	
12/7/1992		COMPENSATED DENSITY				3,400.0		7,120.0	
12/7/1992		INDUCTION				3,500.0		4,450.0	
12/11/1992		CBL/CCL/GR				5,770.0		7,104.0	
Plug Back Total Depths									
Date		Type		Com				Depth (ftKB)	
12/6/1992		GUIDE SHOE						7,109.0	