



**Denver Remote Management Center**  
**13949 West Colfax Ave, Suite 205**  
**Lakewood, Colorado 80401**

Phone 303.325.3289

[WWW.HZMUD.COM](http://WWW.HZMUD.COM)

### Customer Information

**Operator:** PDC Energy Inc  
 1775 Sherman Street  
 Suite 3000  
 Denver, CO 80203

**Geologist:** Rachel Debaillon  
 PDC Energy, Inc.

### Remote Logging Details

**Logger:** HORIZON DENVER REMOTE  
 MANAGEMENT CENTER

**Log Interval:** 5,946' MD to 13,857' MD

**Start Date:** October 8, 2014

**Release Date:** October 17, 2014

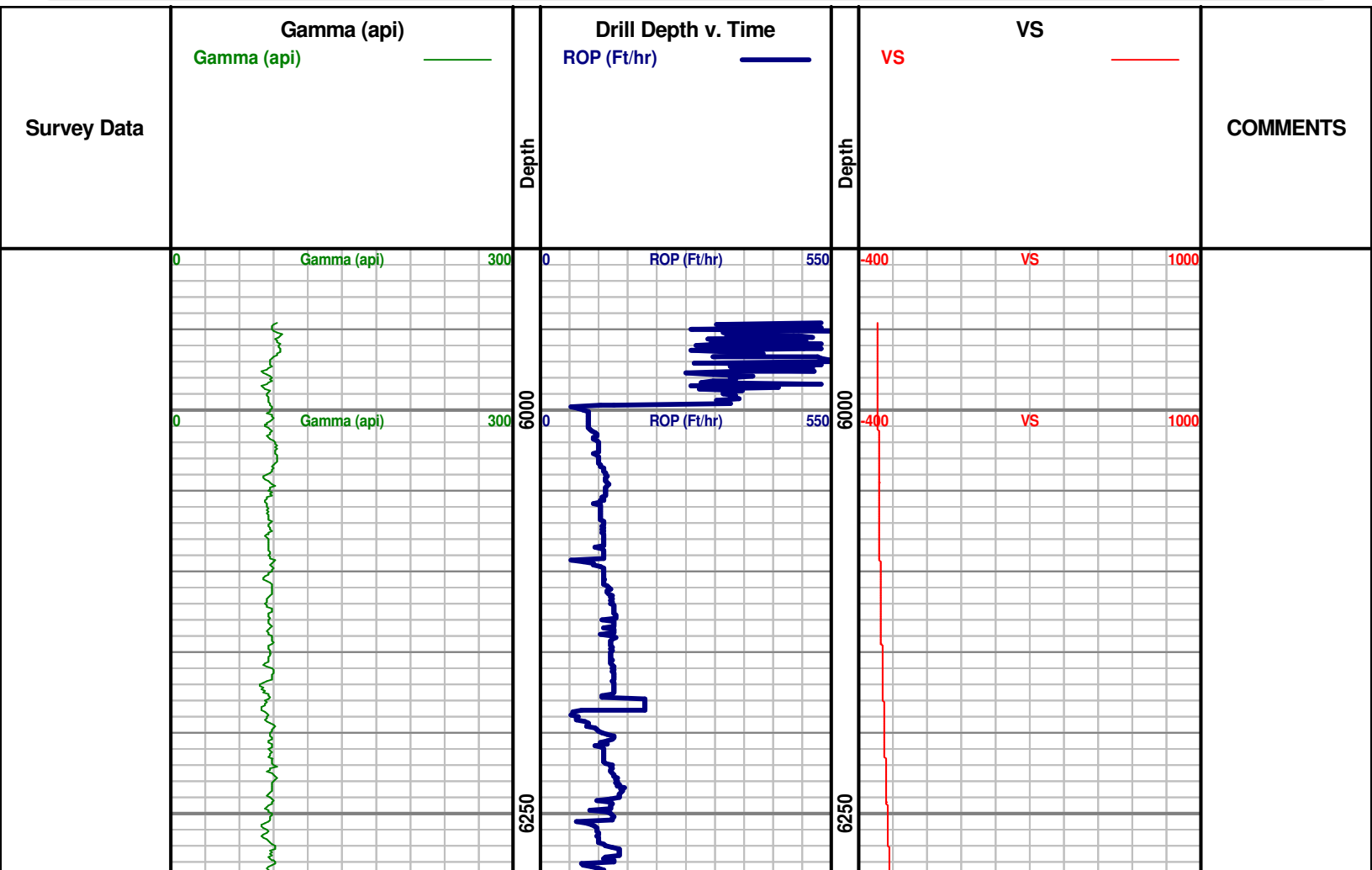
### Well Information

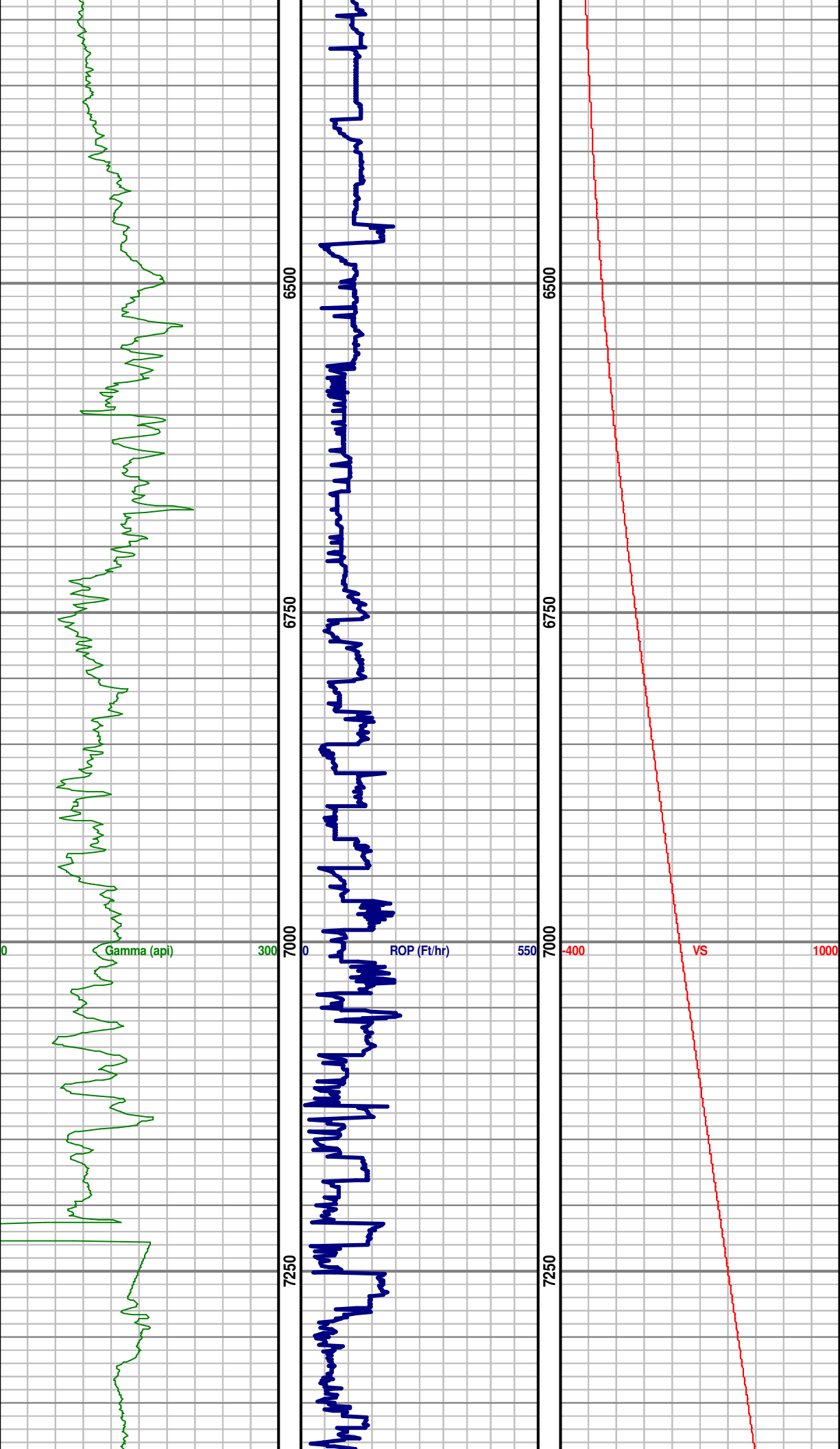
**Well Name:** Chesnut 28R-403

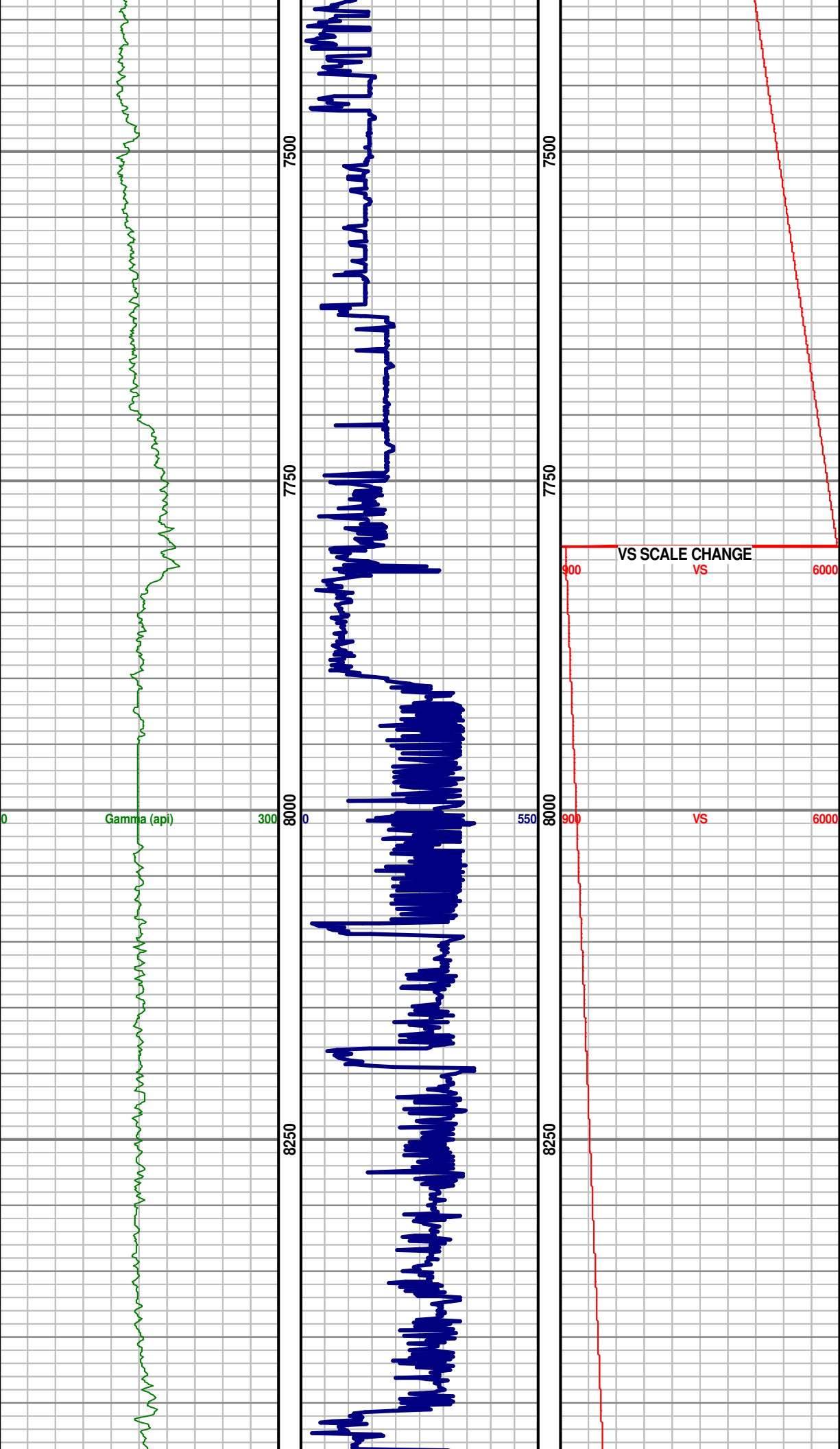
**Location:** NENE SEC 28, 5N, 64W, 6TH  
 380' FNL x 940' FEL

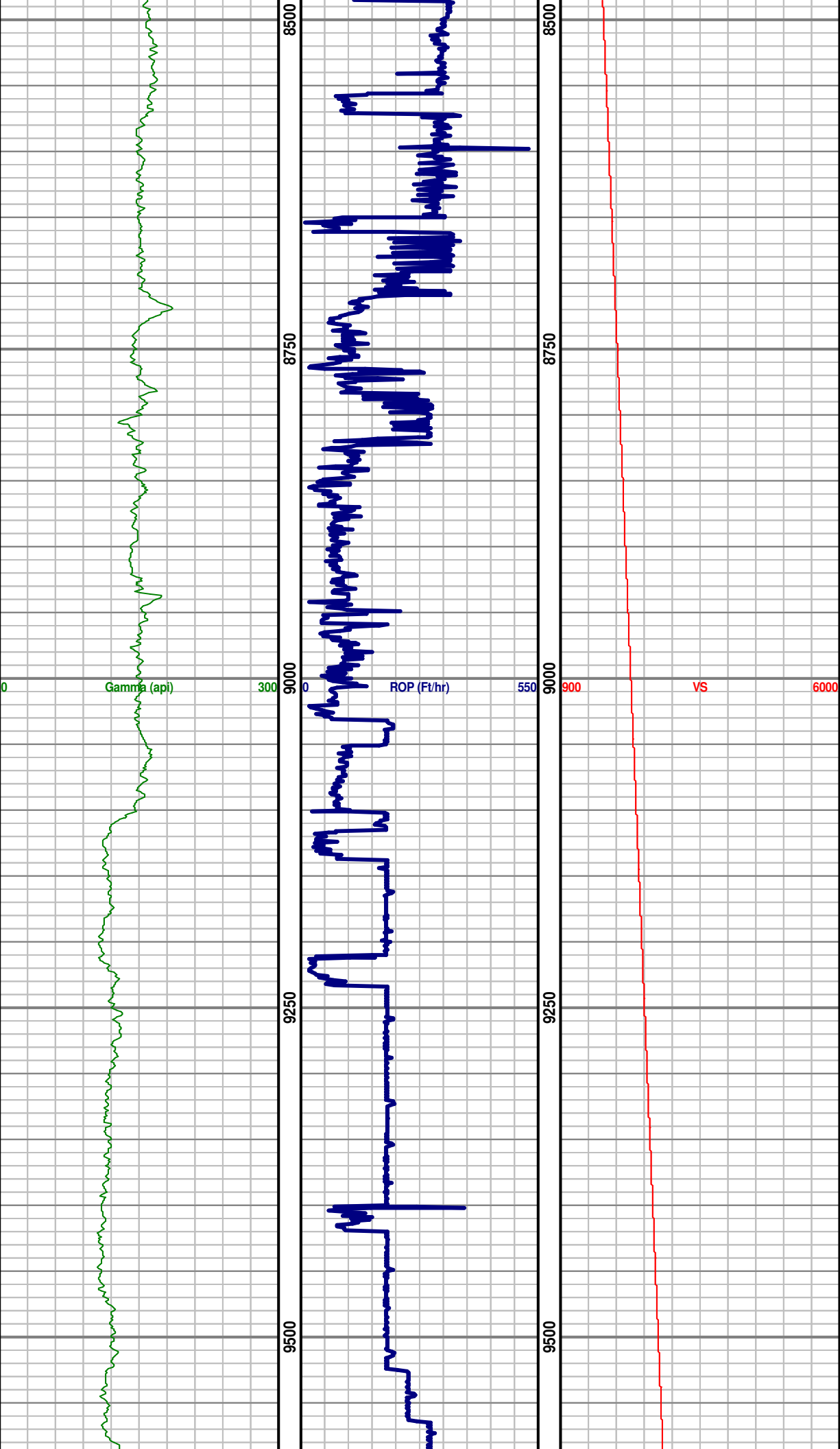
**County:** Weld  
**State:** Colorado

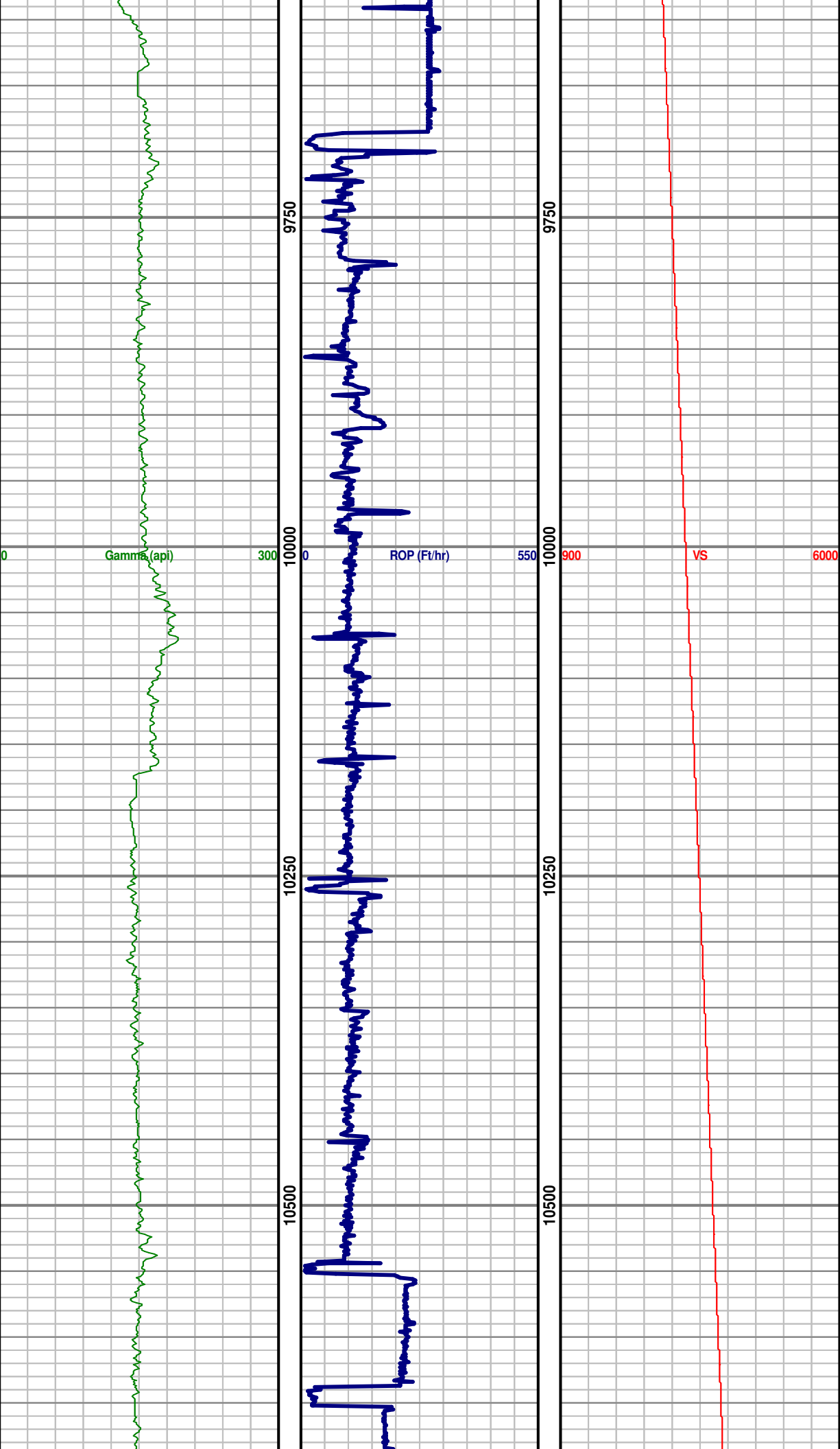
**Drilling Rig:** Ensign 121  
**Total Depth:** 13,857' MD  
**TD Date:** October 17, 2014  
**Field:** Wattenberg  
**KB Elevation:** 4,633'  
**GR Elevation:** 4,620'  
**API Number:** 05-123-39224-0000

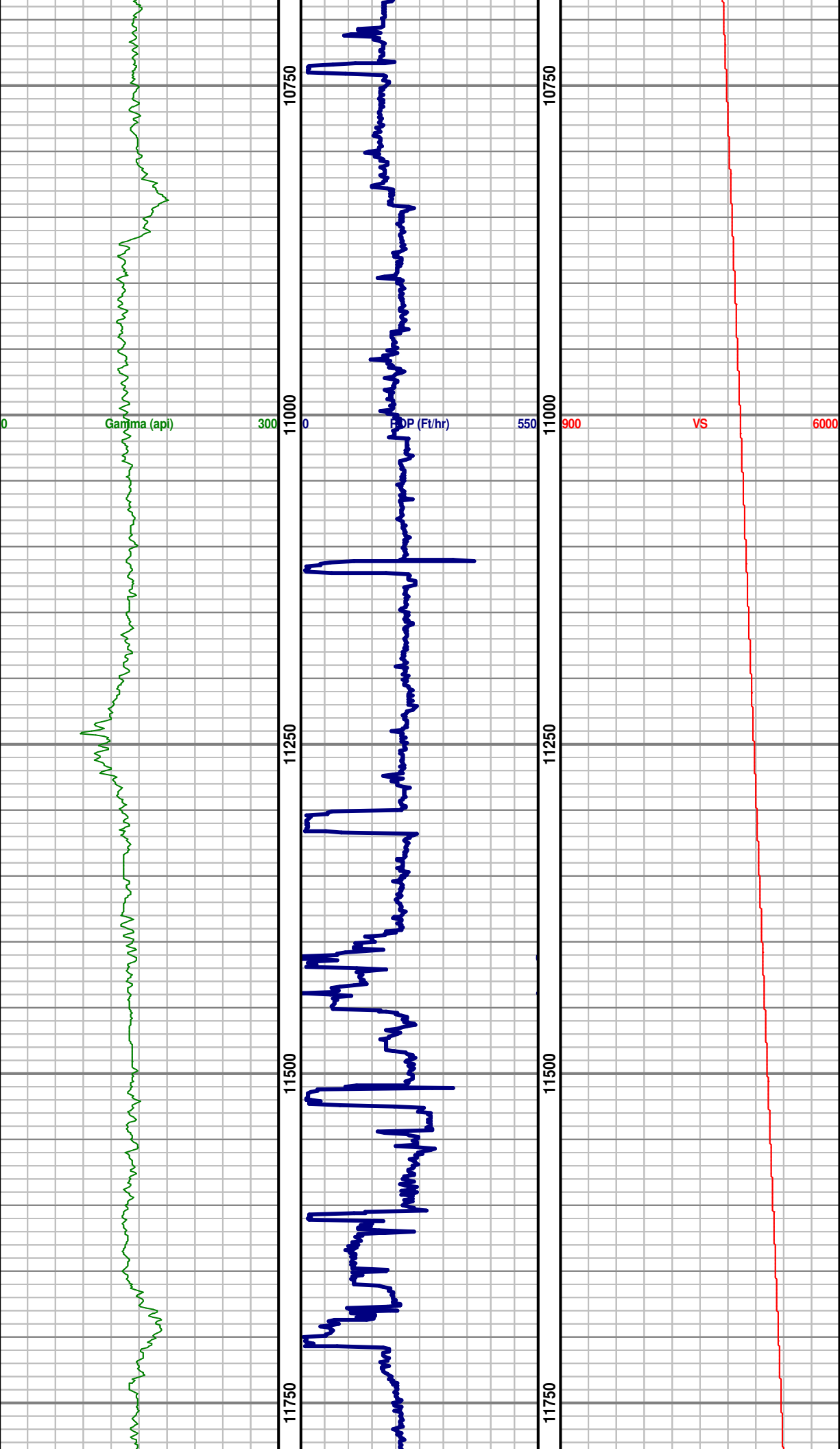


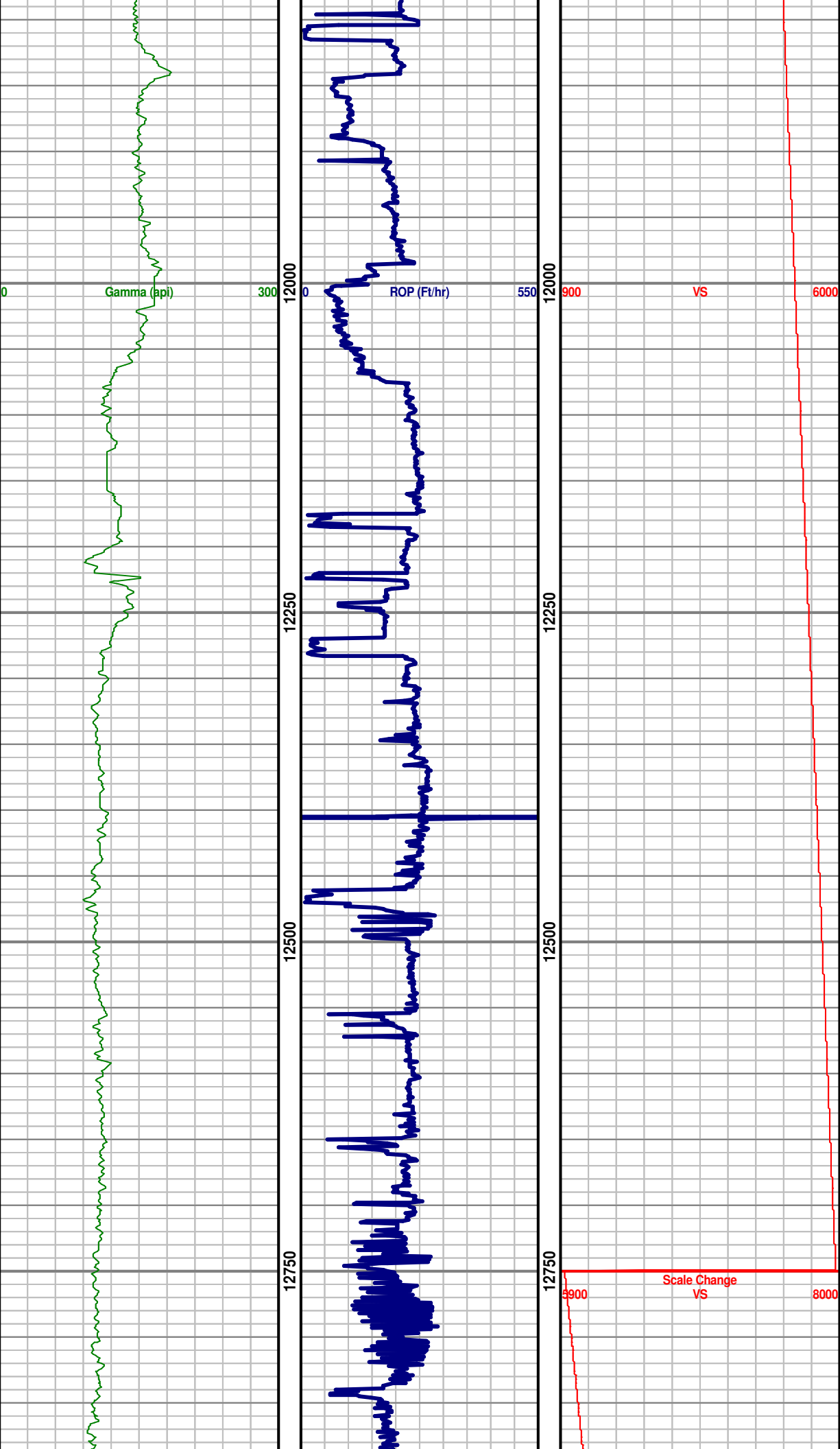


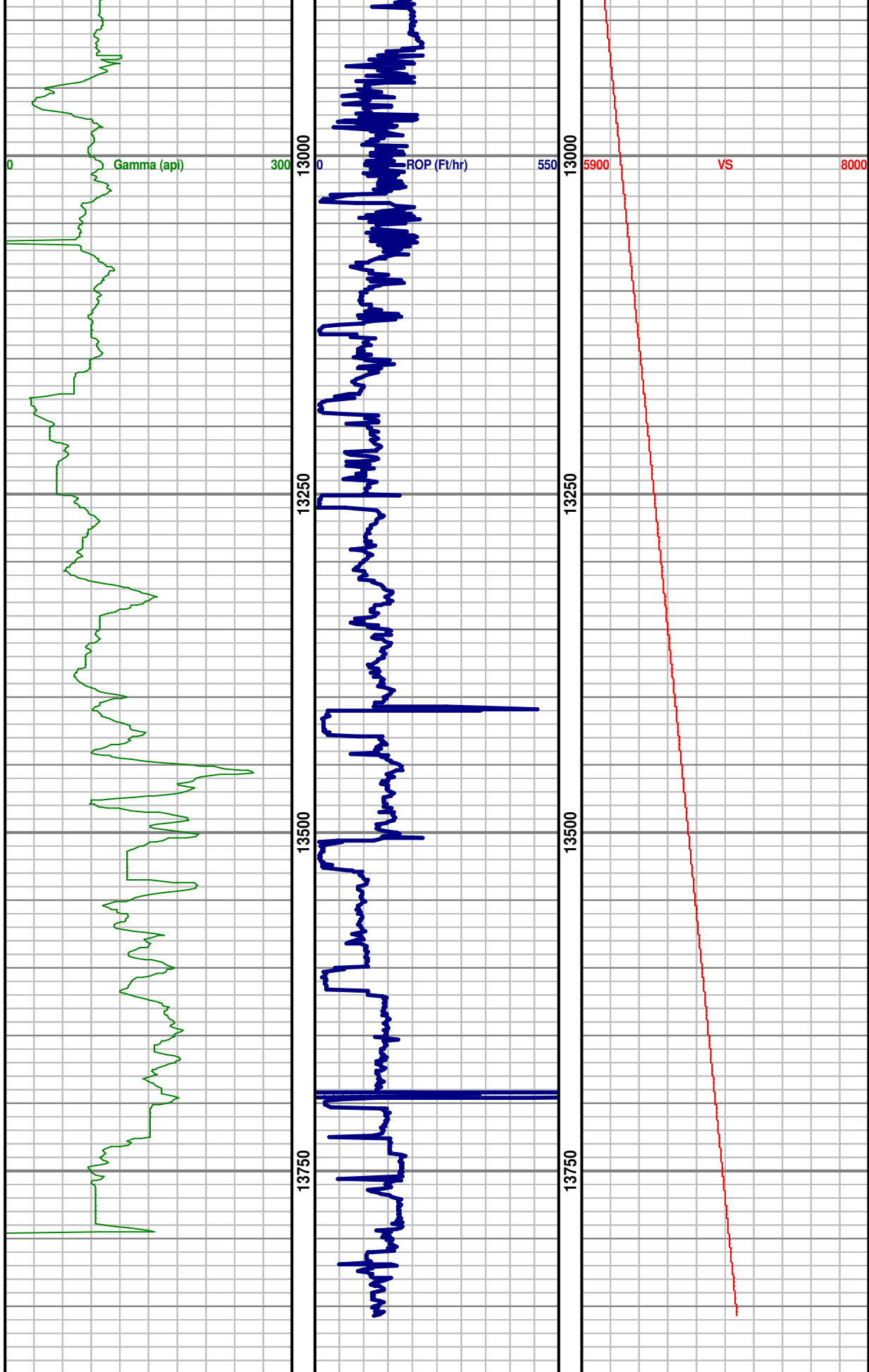












WELL TD @  
13,857' MD  
6,720.32' TVD  
7,036.88' VS  
ON 10/17/2014