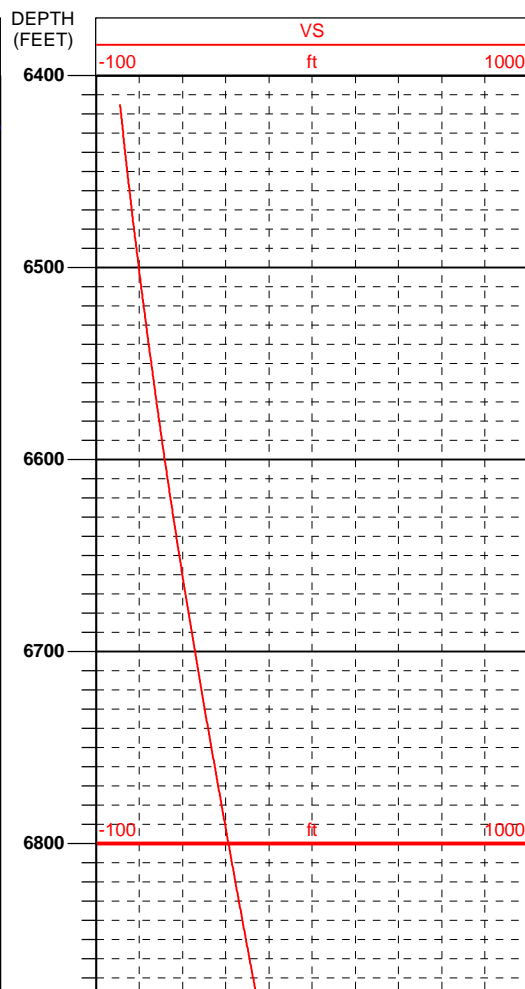
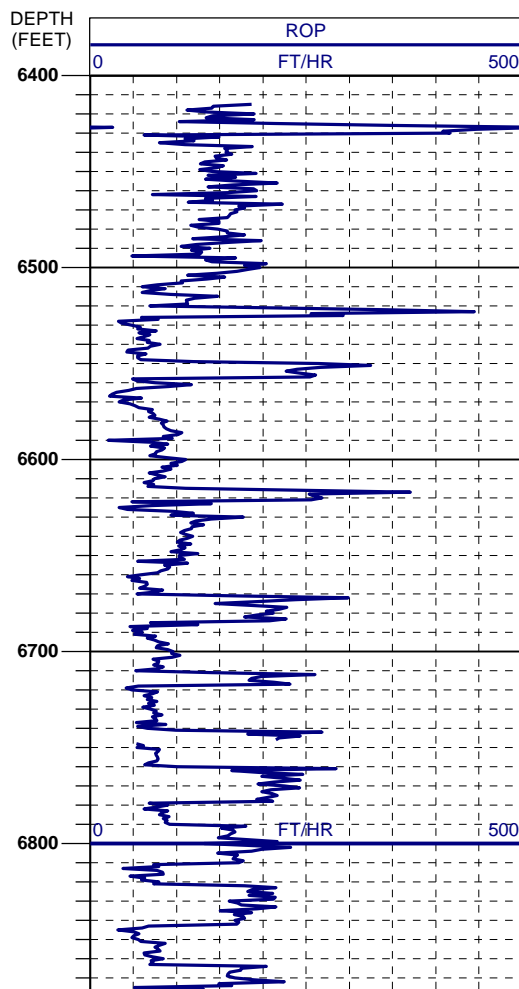
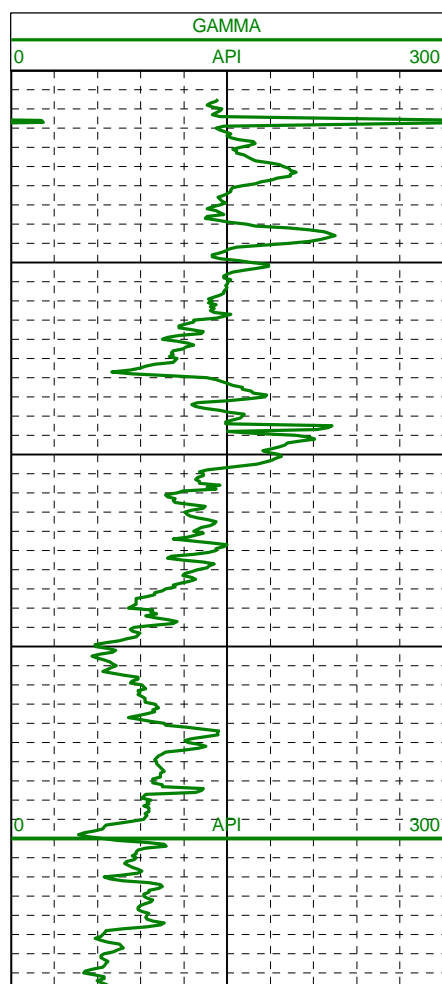
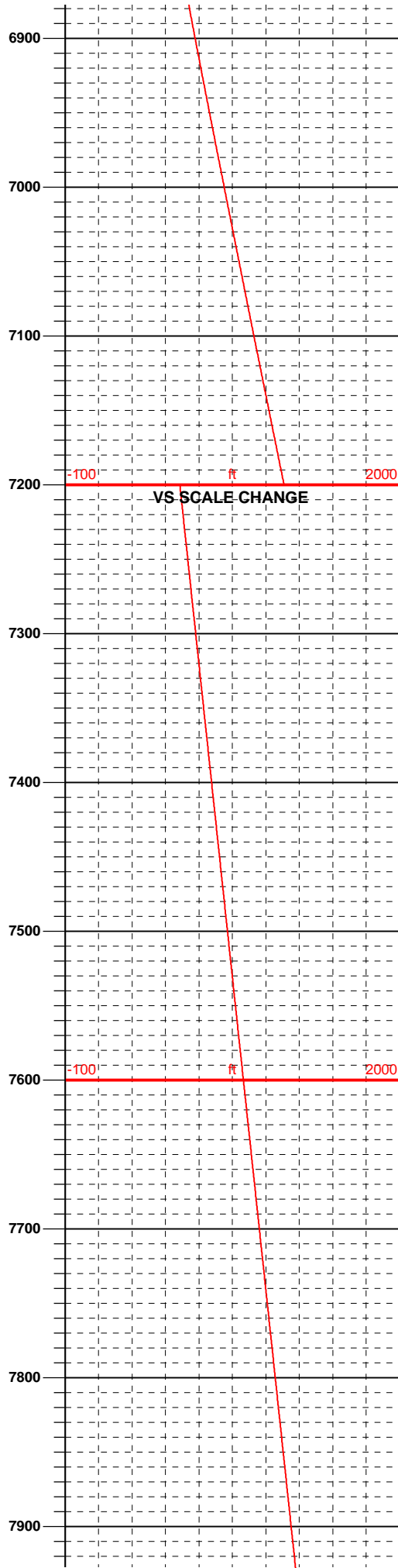
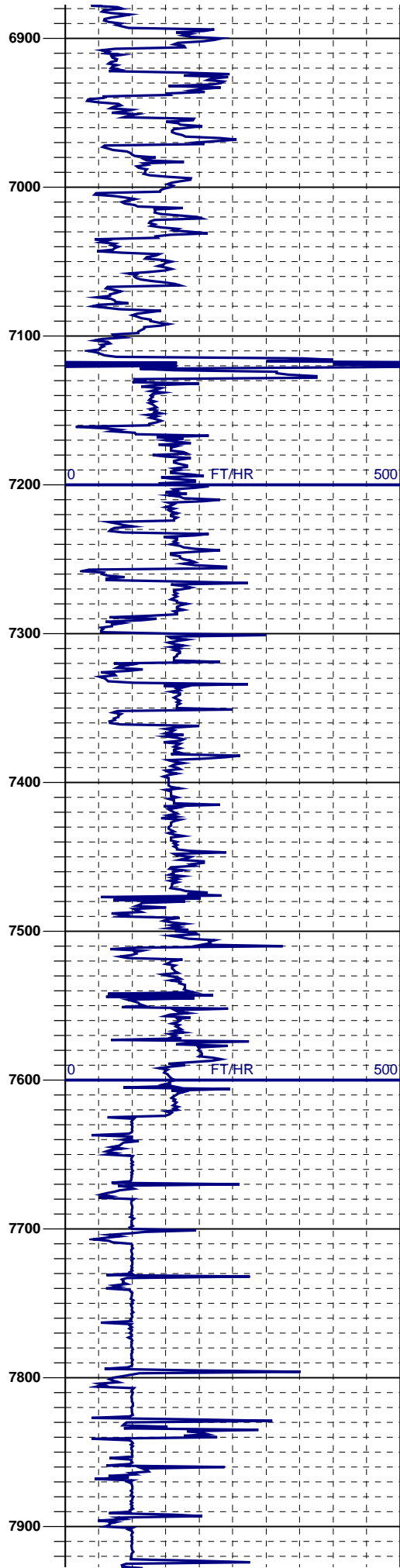
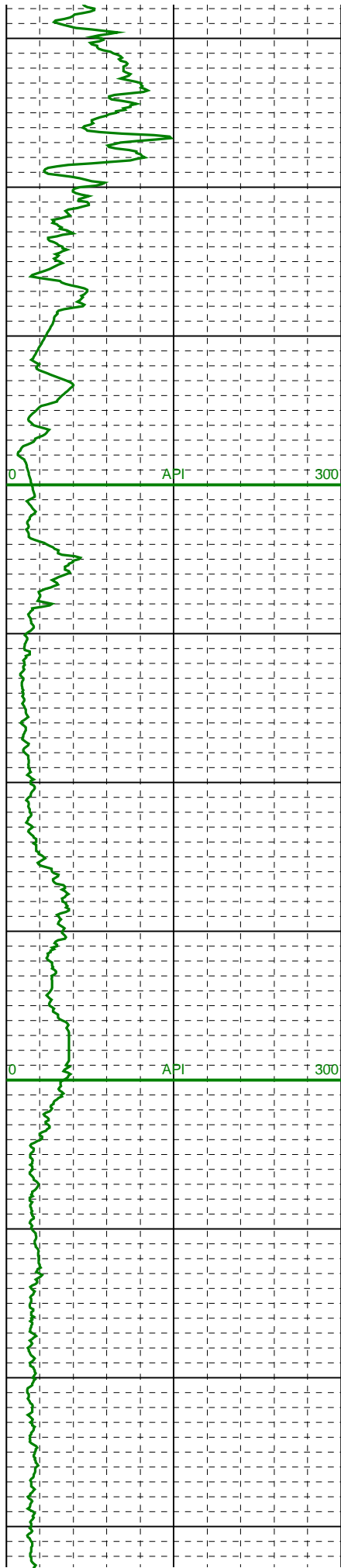
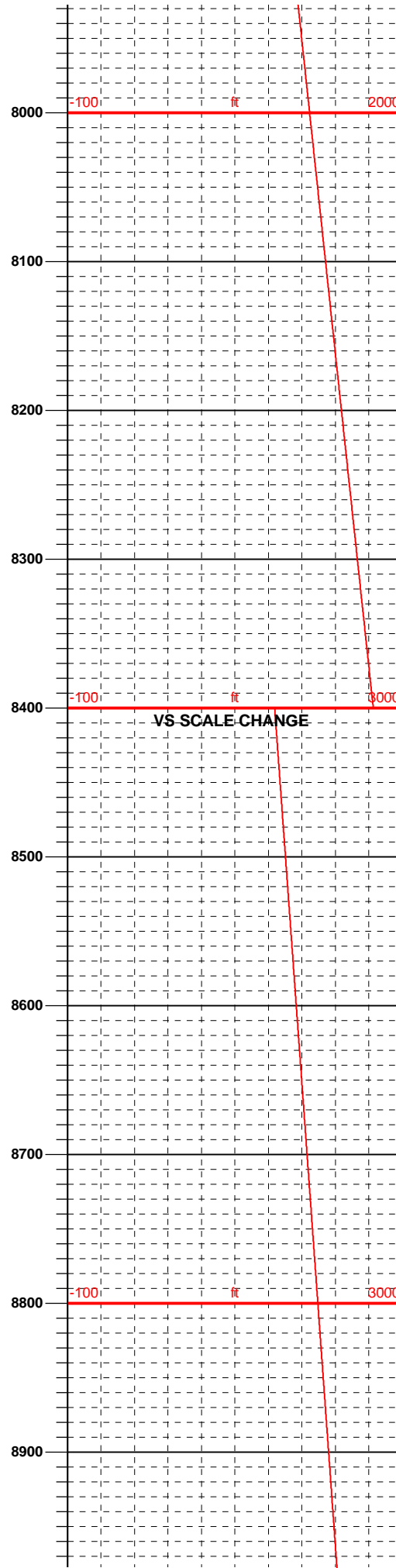
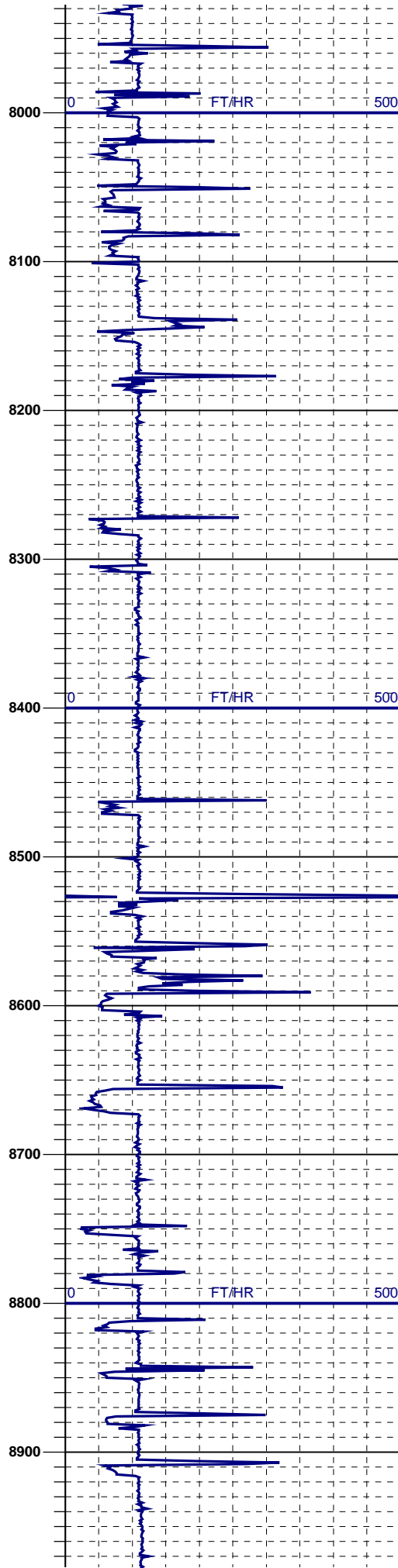
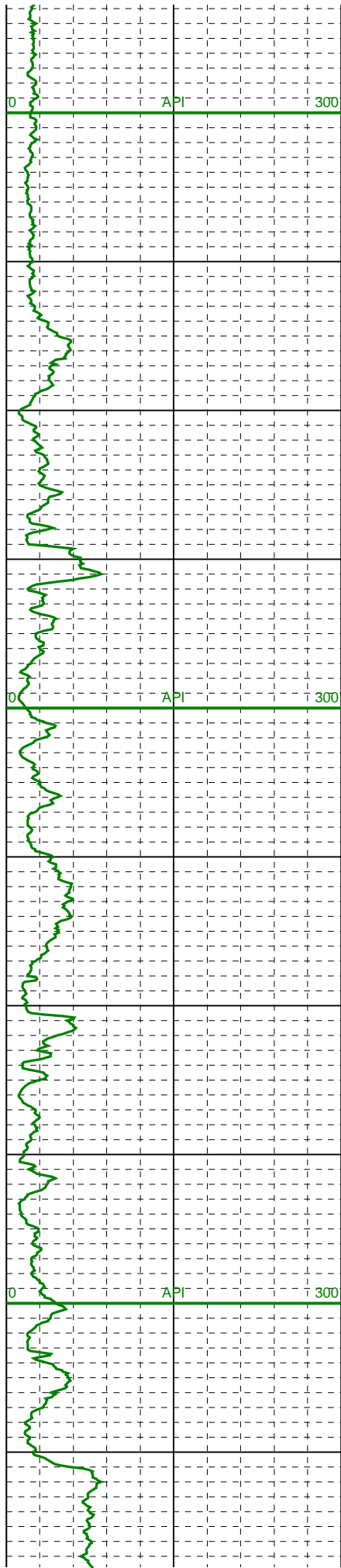


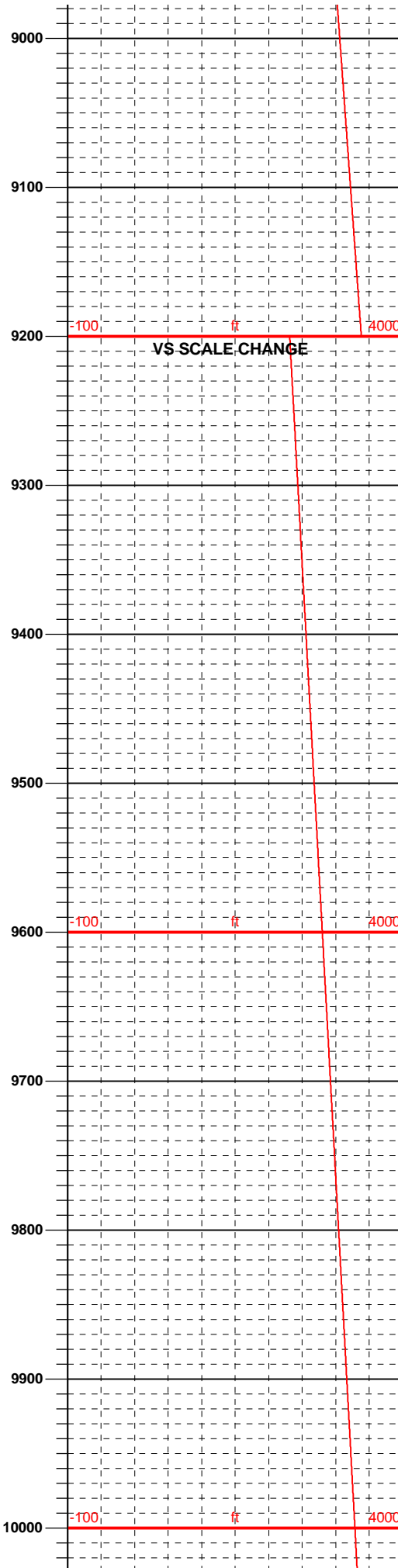
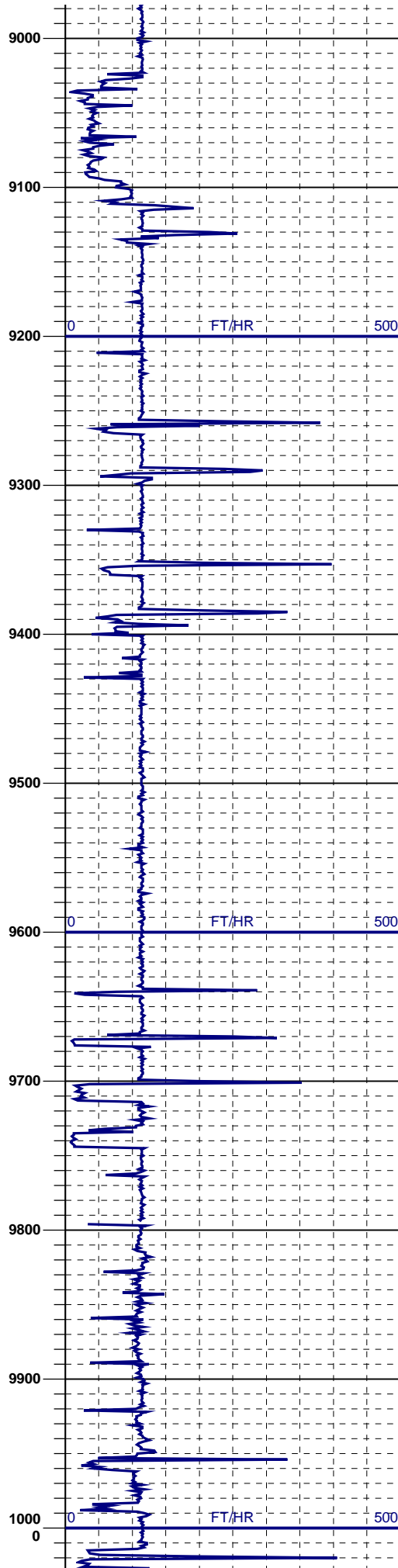
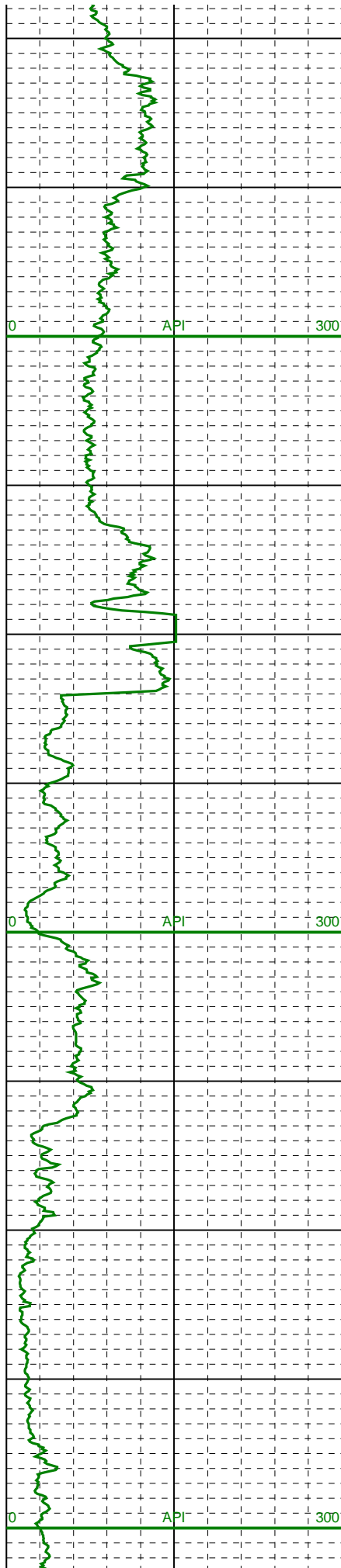
LOG created using L PLOT VH Version 3.0, October 17, 2012, Copyright (C) 1999-2009 Pason Systems Corp.

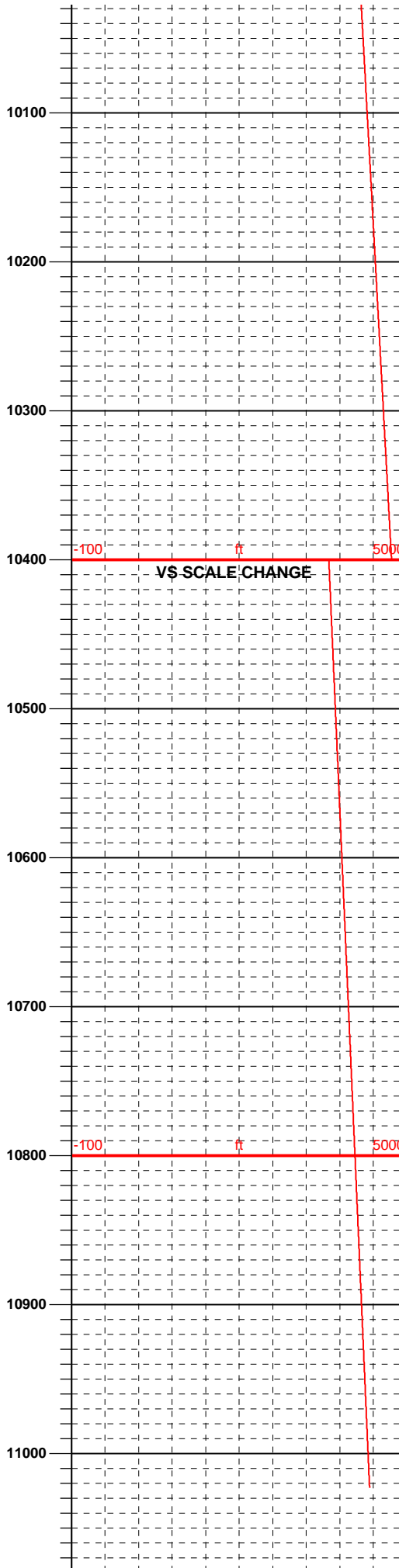
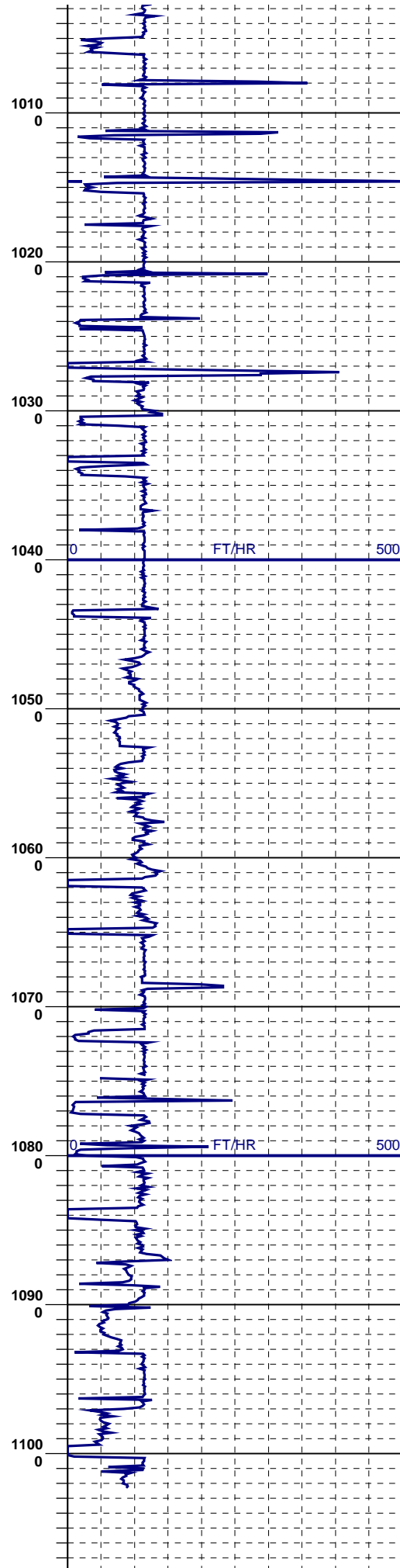
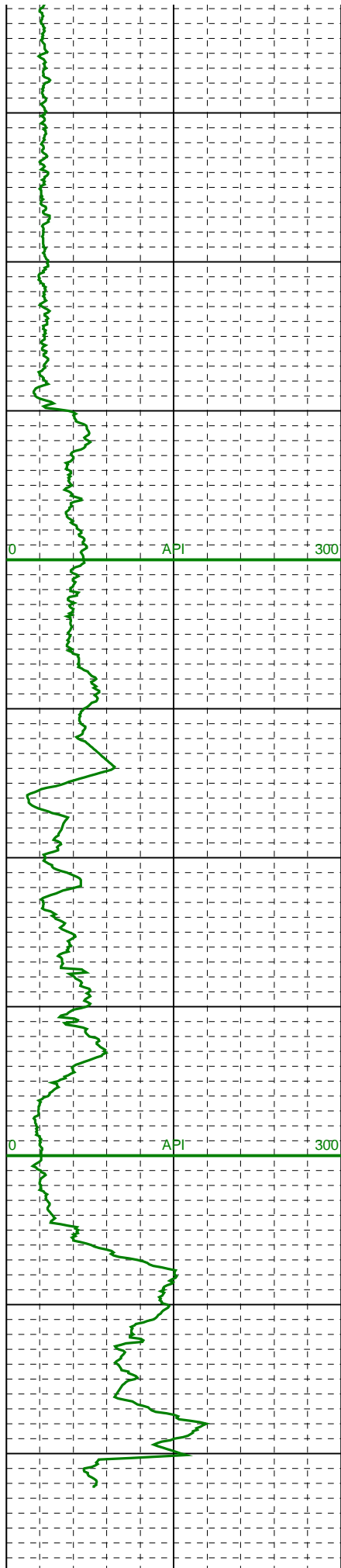
OPERATOR: PETROLEUM DEVELOPMENT CORPORATION
WELL: BROWN 2F-412
LOCATION: NWNW SEC2, 6N, 63W, 6TH
COUNTY: WELD
STATE: COLORADO
SPOT: (SHL) 1,210' FNL & 250' FWL
ELEVATION: GL:4,710'; KB 4,725'
FIELD: WATTENBERG
SYSTEM: PASON
WELL TYPE: HORIZONTAL
DATES LOGGED: OCTOBER 11, 2012 TO OCTOBER 17, 2012
DEPTHS LOGGED: 6,413' TO 11,023'
LOGGERS: PASON COMMAND CENTER
DRILLING FLUID:
DRILLING RIG: ENSIGN 14
API: 05123358510000
LOG TYPE: MD
SCALE: 1:1200 (1 inch per 100 feet)
REMARKS:











1110
0

11100