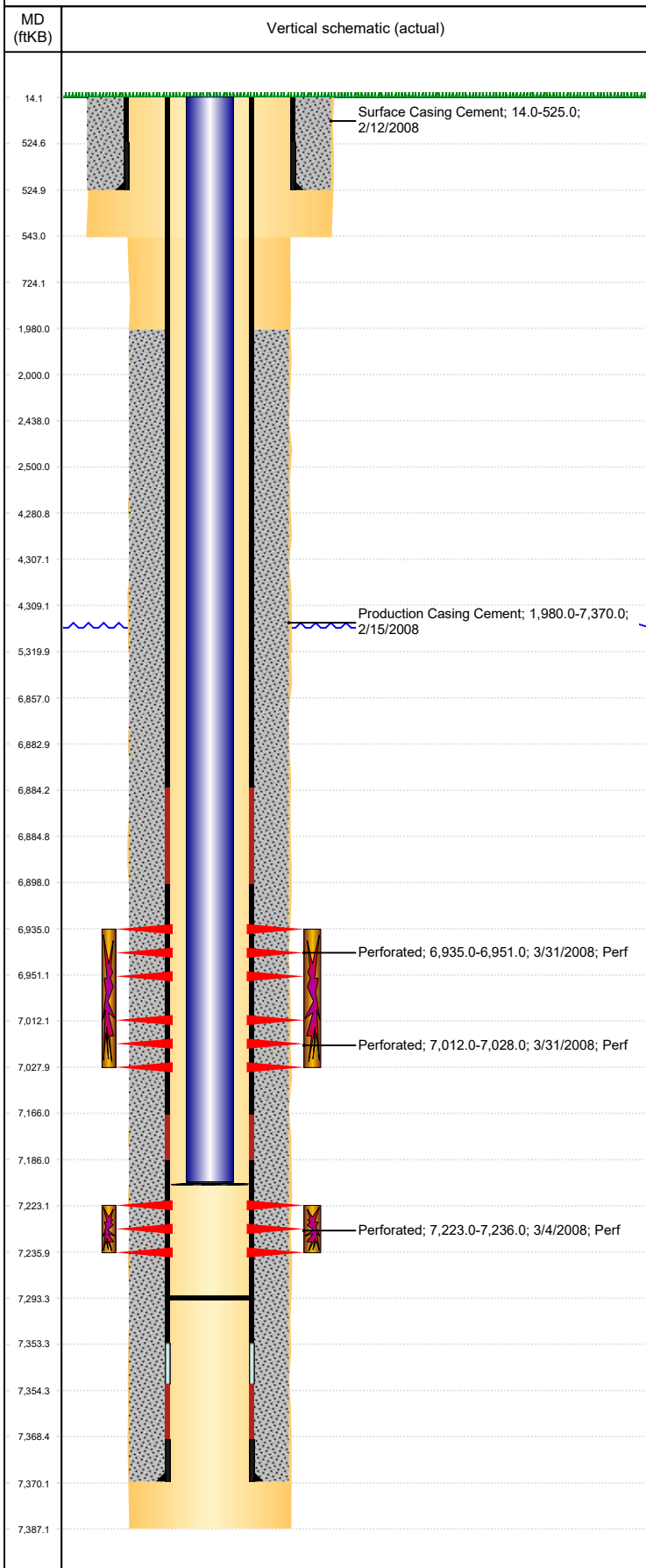


Well Name: SCHMIDT G19-23

VERTICAL, ORIGINAL HOLE, 10/7/2019 3:21:17 PM



Well Header									
API 05-123-25440		Business Unit DJ BASIN			District 15		Well Config VERTICAL		
KB - GL / MSL (ft... 14.00		Spud Date 2/11/2008		P & A Date		Well Production Status PR			SoRT No
Comment DISCREPANCY: SURFACE CSG SET DEPTH- STATE 543' (WRITTEN IN), DRL RPTS 525', USED 525'. 12/23/08- CIFTP TO ALL OF #236 IN @ 7293.37'. STATE SHOWS SHUT IN SINCE MAR 2017.									
Surface Location (Congressional)									
Qtr 3 SW	Qtr 4 SE	Section 19	Twnshp 4	Twnsh... N	Range 65	Rng E/... W	Actual Latitude (°) 40.29427204	Actual Longitude (°) -104.70130213	
Wellbore Sections									
Section Des		Size (in)			Act Top, MD (ftKB)		Act Btm, MD (ftKB)		
SURFACE		12 1/4			14		543		
PRODUCTION		7 7/8			543		2,438		
PRODUCTION		7 7/8			2438		5,320		
PRODUCTION		7 7/8			5320		7,387		
Casing Strings									
Csg Des		Run Date		OD (in)	Wt/Len (lb/ft)	Grade	Top, MD (ftKB)	MD (ftKB)	
Surface		2/11/2008		8 5/8	24.00	J-55	14.0	525.0	
Production		2/15/2008		4 1/2	11.60	M-80	14.1	7,370.0	
Cement									
Des				Start Date		Top (ftKB)		Btm (ftKB)	
Surface Casing Cement				2/12/2008		14.0		525.0	
Production Casing Cement				2/15/2008		1,980.0		7,370.0	
Zone Statuses									
Zone Name	Status Date	Status	Fluid Type	Job				Prod Method	
NIOBRARA	3/31/2008	PR	Water	DRILLING/COMPLETION - ORIGINAL, 2/11/2008...				Flowing	
NIOBRARA	2/5/2010	PR						Flowing	
CODELL	3/31/2008	PR	Water	DRILLING/COMPLETION - ORIGINAL, 2/11/2008...				Flowing	
CODELL	2/5/2010	PR						Flowing	
NIOBRARA	3/10/2017	SI	Water						
NIOBRARA	8/10/2017	PR							
CODELL	2/5/2010	PR						Flowing	
Perforation Data									
Linked Zone		Bnch/Stg	Entered Shot Total	Top (ftKB)		Btm (ftKB)		Date	
NIOBRARA, ORIGINAL HOLE		A	64	6,935.00		6,951.00		3/31/2008	
NIOBRARA, ORIGINAL HOLE		B	64	7,012.00		7,028.00		3/31/2008	
CODELL, ORIGINAL HOLE			52	7,223.00		7,236.00		3/4/2008	
Stimulation Intervals									
Zone				Start Date		Top (ftKB)		Btm (ftKB)	
NIOBRARA, ORIGINAL HOLE				3/31/2008		6,935.0		7,028.0	
CODELL, ORIGINAL HOLE				3/31/2008		7,223.0		7,236.0	
Other In Hole									
Run Date		Des				OD (in)	Top (ftKB)	Btm (ftKB)	
Logs									
Date		Type				Top, MD (ftKB)		Btm, MD (ftKB)	
2/15/2008		Caliper/Comp. Density/Neutron/GR/SP/ML				2,650.0		7,365.0	
2/15/2008		DIL/GR/SP/Caliper				543.0		7,385.0	
3/4/2008		CBL/CCL/GR				1,860.0		7,338.0	
Plug Back Total Depths									
Date		Type		Com				Depth (ftKB)	
3/4/2008		FILL		DEPTH LOGGER ON CBL				7,345.0	
12/23/2008		PLUG REMNANTS		CHASED CIFT TO ALL OF #236 IN @ 7293.37'				7,293.4	