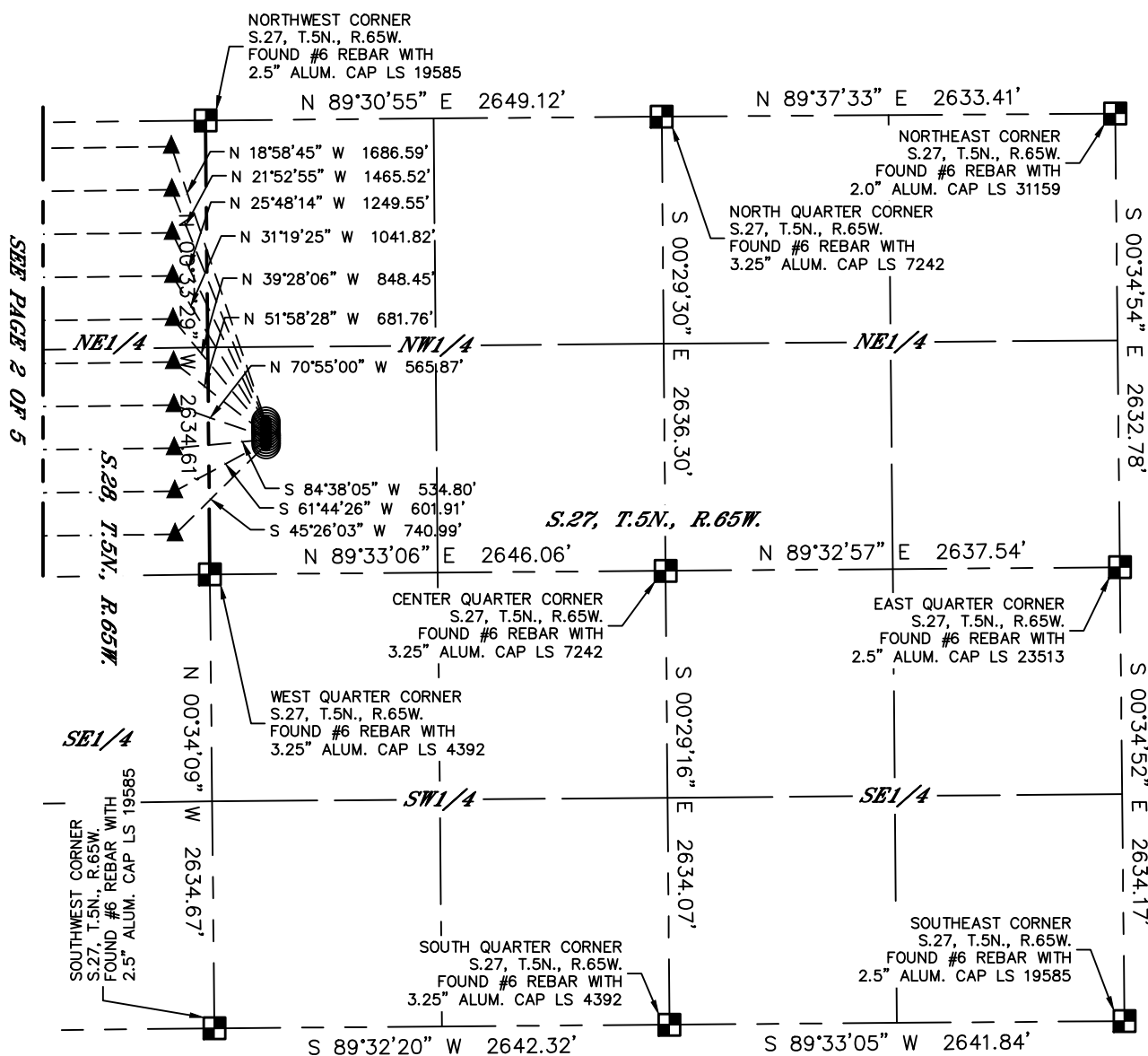


# MULTI-WELL PLAN








## GRAYS FEDERAL 5N65W27 1-10 PAD

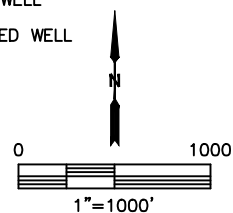
SECTION: 27  
TOWNSHIP: 5N  
RANGE: 65W  
6TH. P.M.  
WELD COUNTY, CO



#	WELL NAME	BHL FOOTAGE				BHL LAT °	BHL LONG °	BHL S-T-R
1	GRAYS FEDERAL 1N	150	FNL	2120	FEL	40.37703	-104.70448	30-5-65
2	GRAYS FEDERAL 2N	400	FNL	2120	FEL	40.37634	-104.70448	30-5-65
3	GRAYS FEDERAL 3N	650	FNL	2470	FEL	40.37566	-104.70573	30-5-65
4	GRAYS FEDERAL 4N	900	FNL	2470	FEL	40.37498	-104.70573	30-5-65
5	GRAYS FEDERAL 5N	1150	FNL	2470	FEL	40.37429	-104.70573	30-5-65
6	GRAYS FEDERAL 6N	1400	FNL	2470	FEL	40.37361	-104.70573	30-5-65
7	GRAYS FEDERAL 7N	1650	FNL	2470	FEL	40.37292	-104.70573	30-5-65
8	GRAYS FEDERAL 8N	1900	FNL	2470	FEL	40.37223	-104.70573	30-5-65
9	GRAYS FEDERAL 9N	2150	FNL	2470	FEL	40.37155	-104.70573	30-5-65
10	GRAYS FEDERAL 10N	2400	FNL	2470	FEL	40.37086	-104.70573	30-5-65

### LEGEND

-  = ALIQUOT MONUMENT AS DESCRIBED  
 = CALCULATED POSITION  
 = SURFACE HOLE LOCATION (SHL)  
 = ENTRY POINT LOCATION (EP)  
 = BOTTOM HOLE LOCATION (BHL)  
 = EXISTING WELL  
 = ABANDONED WELL



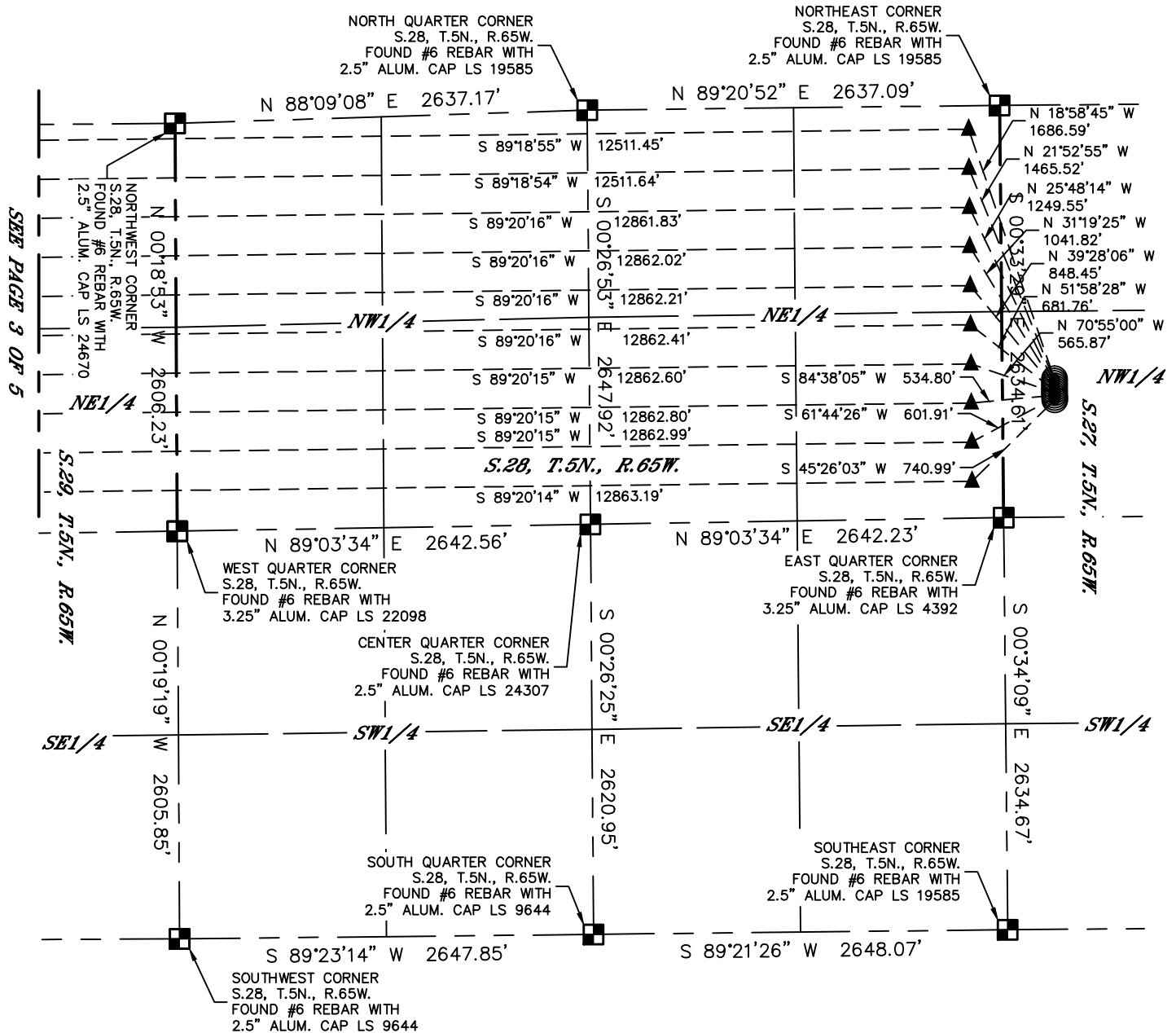


Lat40°, Inc. 6250 W. 10th Street, Unit 2, Greeley, CO 970-515-5294

# MULTI-WELL PLAN

## GRAYS FEDERAL 5N65W27 1-10 PAD

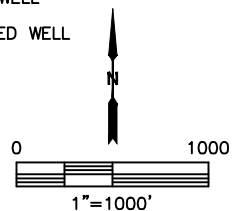
SECTION: 27  
TOWNSHIP: 5N  
RANGE: 65W  
6TH. P.M.  
WELD COUNTY, CO



### LEGEND

- = ALIQUOT MONUMENT AS DESCRIBED
- = CALCULATED POSITION
- = SURFACE HOLE LOCATION (SHL)
- ▲ = ENTRY POINT LOCATION (EP)
- <sub>BH</sub> = BOTTOM HOLE LOCATION (BHL)
- ⊙ = EXISTING WELL
- ⊙ = ABANDONED WELL

#	WELL NAME		BHL FOOTAGE		BHL LAT°	BHL LONG°	BHL S-T-R
1	GRAYS FEDERAL 1N	150	FNL 2120	FEL	40.37703	-104.70448	30-5-65
2	GRAYS FEDERAL 2N	400	FNL 2120	FEL	40.37634	-104.70448	30-5-65
3	GRAYS FEDERAL 3N	650	FNL 2470	FEL	40.37566	-104.70573	30-5-65
4	GRAYS FEDERAL 4N	900	FNL 2470	FEL	40.37498	-104.70573	30-5-65
5	GRAYS FEDERAL 5N	1150	FNL 2470	FEL	40.37429	-104.70573	30-5-65
6	GRAYS FEDERAL 6N	1400	FNL 2470	FEL	40.37361	-104.70573	30-5-65
7	GRAYS FEDERAL 7N	1650	FNL 2470	FEL	40.37292	-104.70573	30-5-65
8	GRAYS FEDERAL 8N	1900	FNL 2470	FEL	40.37223	-104.70573	30-5-65
9	GRAYS FEDERAL 9N	2150	FNL 2470	FEL	40.37155	-104.70573	30-5-65
10	GRAYS FEDERAL 10N	2400	FNL 2470	FEL	40.37086	-104.70573	30-5-65



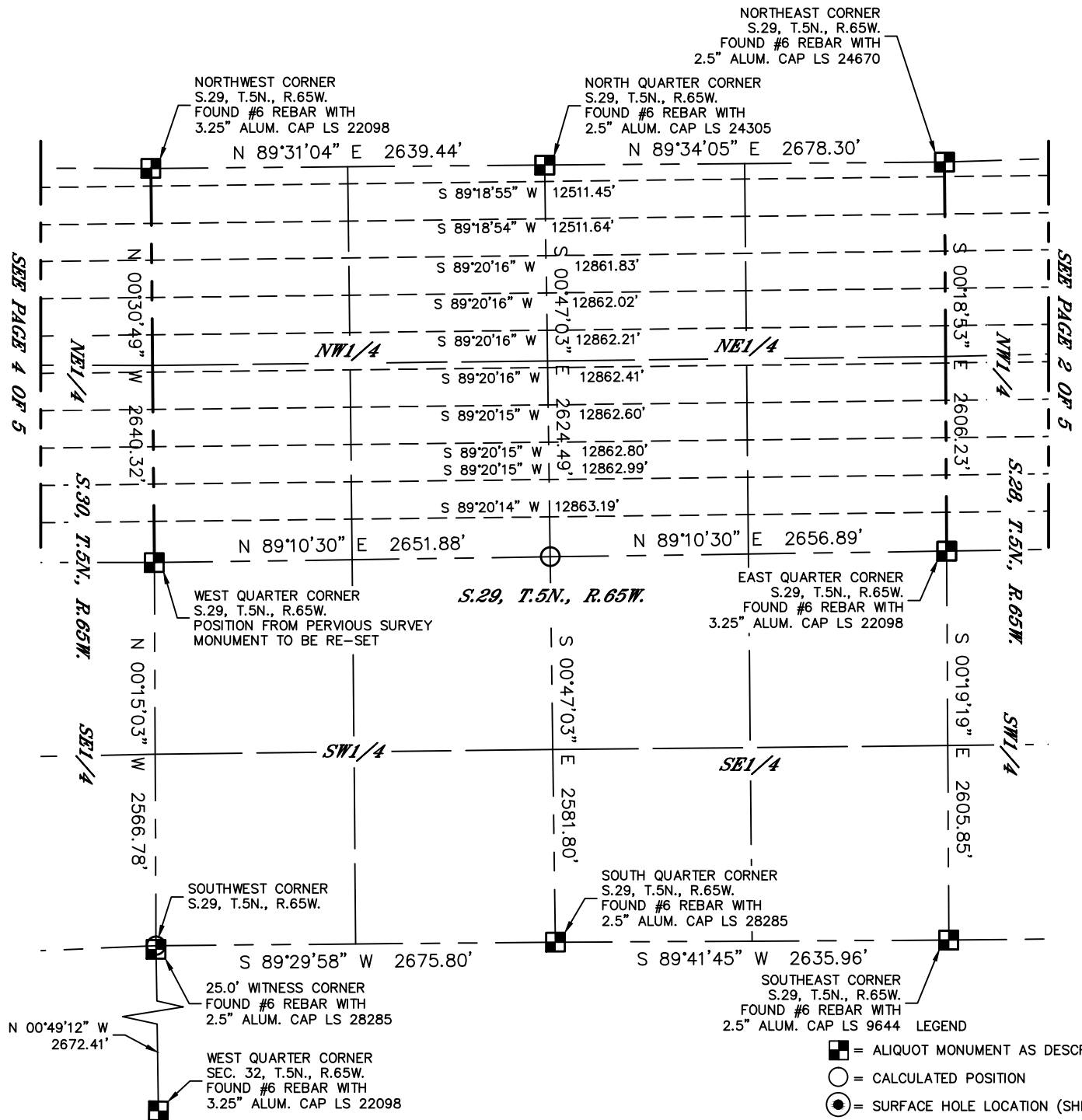


Lat40°, Inc. 6250 W. 10th Street, Unit 2, Greeley, CO 970-515-5294

# MULTI-WELL PLAN

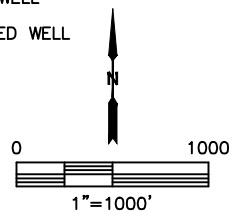
## GRAYS FEDERAL 5N65W27 1-10 PAD

SECTION: 27  
TOWNSHIP: 5N  
RANGE: 65W  
6TH. P.M.  
WELD COUNTY, CO



#	WELL NAME	BHL FOOTAGE	BHL LAT °	BHL LONG °	BHL S-T-R
1	GRAYS FEDERAL 1N	150 FNL 2120 FEL	40.37703	-104.70448	30-5-65
2	GRAYS FEDERAL 2N	400 FNL 2120 FEL	40.37634	-104.70448	30-5-65
3	GRAYS FEDERAL 3N	650 FNL 2470 FEL	40.37566	-104.70573	30-5-65
4	GRAYS FEDERAL 4N	900 FNL 2470 FEL	40.37498	-104.70573	30-5-65
5	GRAYS FEDERAL 5N	1150 FNL 2470 FEL	40.37429	-104.70573	30-5-65
6	GRAYS FEDERAL 6N	1400 FNL 2470 FEL	40.37361	-104.70573	30-5-65
7	GRAYS FEDERAL 7N	1650 FNL 2470 FEL	40.37292	-104.70573	30-5-65
8	GRAYS FEDERAL 8N	1900 FNL 2470 FEL	40.37223	-104.70573	30-5-65
9	GRAYS FEDERAL 9N	2150 FNL 2470 FEL	40.37155	-104.70573	30-5-65
10	GRAYS FEDERAL 10N	2400 FNL 2470 FEL	40.37086	-104.70573	30-5-65

- LEGEND
- = ALIQUOT MONUMENT AS DESCRIBED
  - = CALCULATED POSITION
  - = SURFACE HOLE LOCATION (SHL)
  - ▲ = ENTRY POINT LOCATION (EP)
  - = BOTTOM HOLE LOCATION (BHL)
  - ⊙ = EXISTING WELL
  - ⊙ = ABANDONED WELL



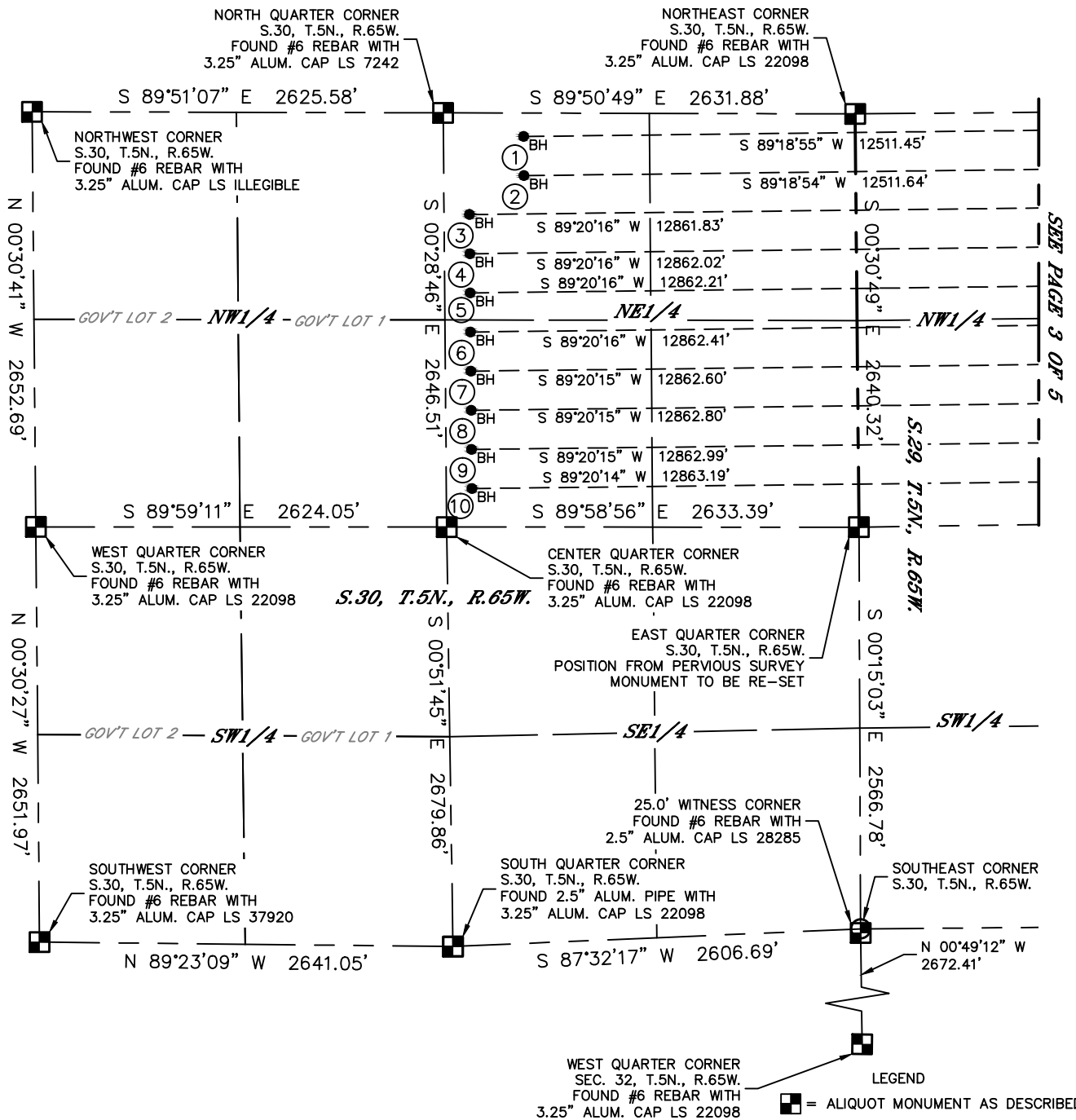


Lat40°, Inc. 6250 W. 10th Street, Unit 2, Greeley, CO 970-515-5294

# MULTI-WELL PLAN

## GRAYS FEDERAL 5N65W27 1-10 PAD

SECTION: 27  
TOWNSHIP: 5N  
RANGE: 65W  
6TH. P.M.  
WELD COUNTY, CO



#	WELL NAME	BHL FOOTAGE	BHL LAT°	BHL LONG°	BHL S-T-R
1	GRAYS FEDERAL 1N	150 FNL 2120 FEL	40.37703	-104.70448	30-5-65
2	GRAYS FEDERAL 2N	400 FNL 2120 FEL	40.37634	-104.70448	30-5-65
3	GRAYS FEDERAL 3N	650 FNL 2470 FEL	40.37566	-104.70573	30-5-65
4	GRAYS FEDERAL 4N	900 FNL 2470 FEL	40.37498	-104.70573	30-5-65
5	GRAYS FEDERAL 5N	1150 FNL 2470 FEL	40.37429	-104.70573	30-5-65
6	GRAYS FEDERAL 6N	1400 FNL 2470 FEL	40.37361	-104.70573	30-5-65
7	GRAYS FEDERAL 7N	1650 FNL 2470 FEL	40.37292	-104.70573	30-5-65
8	GRAYS FEDERAL 8N	1900 FNL 2470 FEL	40.37223	-104.70573	30-5-65
9	GRAYS FEDERAL 9N	2150 FNL 2470 FEL	40.37155	-104.70573	30-5-65
10	GRAYS FEDERAL 10N	2400 FNL 2470 FEL	40.37086	-104.70573	30-5-65

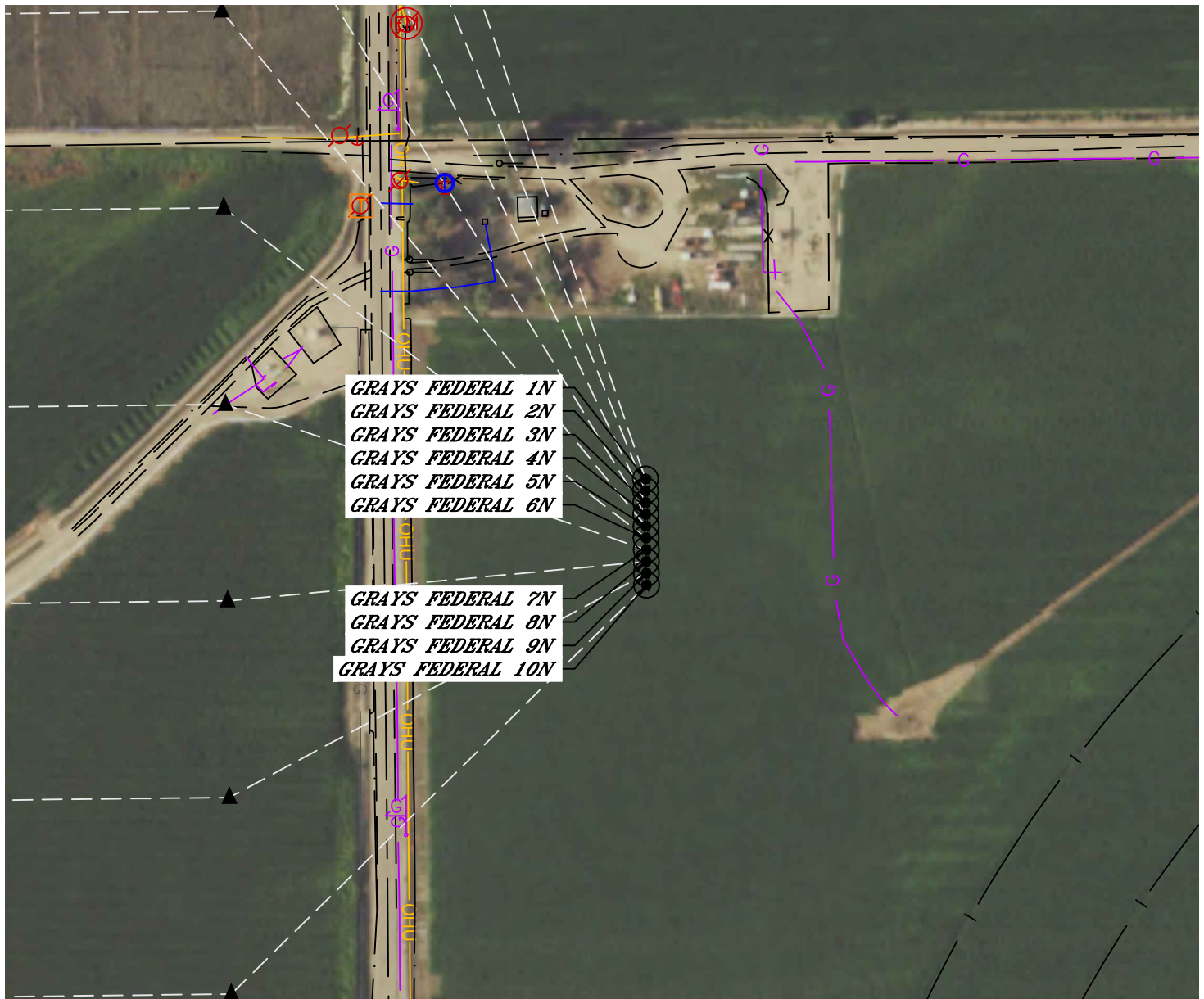


Lat40°, Inc. 6250 W. 10th Street, Unit 2, Greeley, CO 970-515-5294

# MULTI-WELL PLAN

## GRAYS FEDERAL 5N65W27 1-10 PAD

SECTION: 27  
TOWNSHIP: 5N  
RANGE: 65W  
6TH. P.M.  
WELD COUNTY, CO



#	WELL NAME	SHL FOOTAGE				SHL LAT °	SHL LONG °	SHL PDOP	SHL ELEV (FT.)	SHL 1/4/1/4	SHL S-T-R
1	GRAYS FEDERAL 1N	1750	FNL	333	FWL	40.37273	-104.65767	1.5	4655	SWNW	27-5-65
2	GRAYS FEDERAL 2N	1765	FNL	333	FWL	40.37269	-104.65767	1.5	4655	SWNW	27-5-65
3	GRAYS FEDERAL 3N	1780	FNL	333	FWL	40.37265	-104.65767	1.5	4655	SWNW	27-5-65
4	GRAYS FEDERAL 4N	1795	FNL	333	FWL	40.37260	-104.65767	1.5	4656	SWNW	27-5-65
5	GRAYS FEDERAL 5N	1810	FNL	333	FWL	40.37256	-104.65767	1.5	4655	SWNW	27-5-65
6	GRAYS FEDERAL 6N	1825	FNL	333	FWL	40.37252	-104.65767	1.5	4656	SWNW	27-5-65
7	GRAYS FEDERAL 7N	1840	FNL	333	FWL	40.37248	-104.65767	1.5	4656	SWNW	27-5-65
8	GRAYS FEDERAL 8N	1855	FNL	333	FWL	40.37244	-104.65767	1.5	4656	SWNW	27-5-65
9	GRAYS FEDERAL 9N	1870	FNL	333	FWL	40.37240	-104.65767	1.4	4656	SWNW	27-5-65
10	GRAYS FEDERAL 10N	1885	FNL	333	FWL	40.37236	-104.65767	1.4	4656	SWNW	27-5-65

