

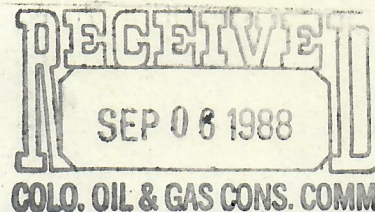


Holloway & Holloway, Inc.
4218 W. 14th St. Lane
Greeley, CO 80634
(303) 867-3715
(303) 353-9747

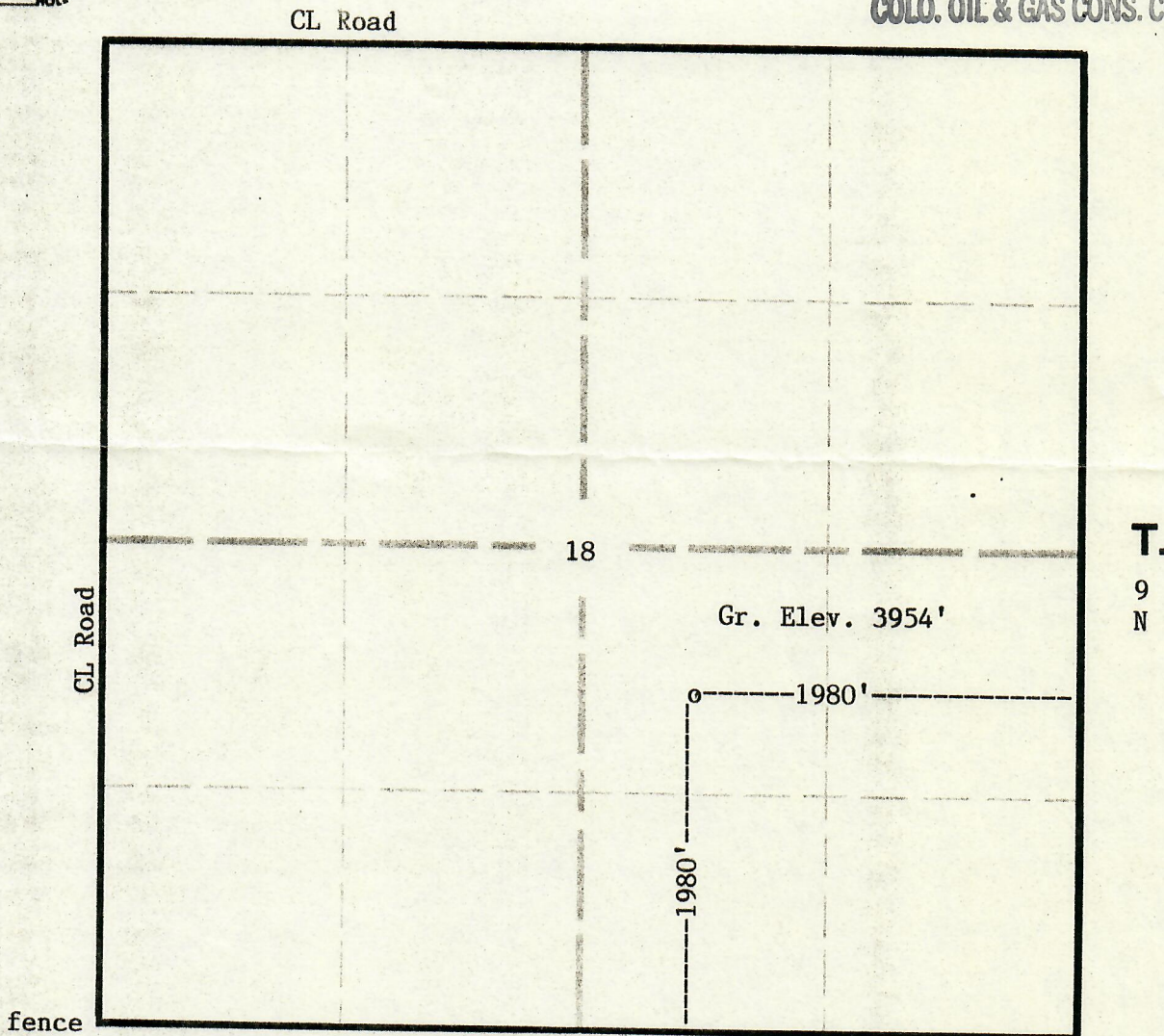


00255047

R. 52W



N



Scale - - - 1" = 1000'

In accordance with a request from LASMO Energy Corporation
the Undersigned has
determined the location of the No.1 Knudson well

to be 1980'FSL & 1980'FEL

as co-ordinates

Section 18 Township 9N Range 52W of the 6th principal Meridian
Logan County, Colorado.

I hereby certify,
that this oil and/or gas well location certificate was prepared for LASMO Energy Corporation
that it is not a land survey plat or improvement survey plat, and that it is not to be relied upon for the
establishment of fence, building or other future improvement lines.

Date 8-13-88

Holloway & Holloway, Inc.
States of
Colorado, Nebraska, Wyoming