

# *Inspection Photos*

*Loc#430698*

*Operator: Maralex*

*Inspection: #692401383*

*Inspection Date: 9/27/19*



**COLORADO**  
Oil & Gas Conservation  
Commission  
Department of Natural Resources



Photo#1:  
Overview of Location from entry to North.

September 27, 2019



**COLORADO**  
Oil & Gas Conservation  
Commission  
Department of Natural Resources

Inspection Photos: Maralex Compressor Loc#430698





Photo#2:  
View of Compressor & Sound Wall area.

September 27, 2019



**COLORADO**  
Oil & Gas Conservation  
Commission  
Department of Natural Resources

Inspection Photos: Maralex Compressor Loc#430698



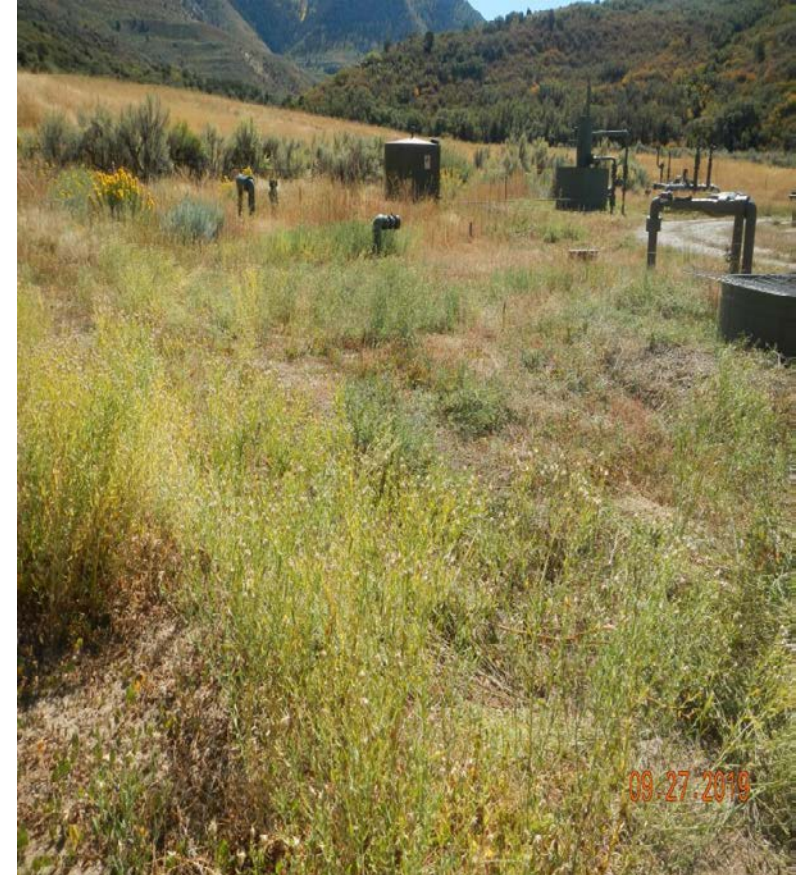


Photo#3:  
View inside sound wall in back of compressor.

Photo#4:  
View outside of sound wall; top layer of bales not in place.

September 27, 2019





**Photo#5:**  
Majority of Vegetation within Interim Reclamation areas are weedy species

September 27, 2019

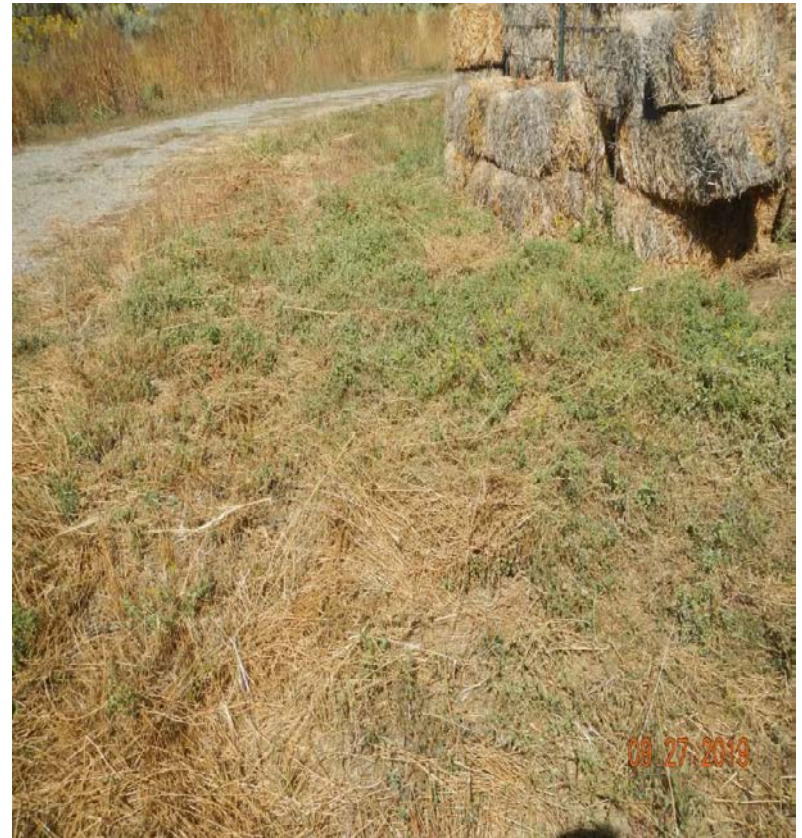
**Photo#6:**  
Majority of Vegetation within Interim Reclamation areas are weedy species





Photo#7:  
Mature weeds have been cut off, left on site & become Debris.

September 27, 2019



Photo#8:  
Mature weeds have been cut off, left on site & become Debris.





Photo#9:  
Staining, impacted soil observed around multiple pieces of equipment.

September 27, 2019



Photo#10:  
Staining, impacted soil observed around multiple pieces of equipment.





Photo#11:  
Stock tank used for containment of day tanks.

September 27, 2019



Photo#12:  
Close up view of liquid in stock tank used  
for containment of day tanks.





**Photo#13:**

Staining, impacted soil observed around multiple pieces of equipment.

September 27, 2019



**Photo#14:**

Staining, impacted soil observed around multiple pieces of equipment.



**COLORADO**  
Oil & Gas Conservation  
Commission  
Department of Natural Resources

Inspection Photos: Maralex Compressor Loc#430698





Photo#15:  
Staining, impacted soil observed around multiple pieces of equipment.

September 27, 2019



Photo#16:  
Improperly stored supplies.





Photo#17:  
Tank appears stained with overflow; insert of tank label missing Capacity and contents.

September 27, 2019



Photo#18:  
Staining observed outside of tank berm.





Photo#19:  
Shallow pit hidden in weeds at East side of site.  
Insert is close up of impacted soil.

September 27, 2019



Photo#20:  
Shallow pit hidden in weeds at East side of site.  
Insert is close up of impacted soil.





Photo#21:

Gaps in netted panel that covers stock tank used for fluid storage from separator unit, allows ingress of smaller Wildlife.

September 27, 2019