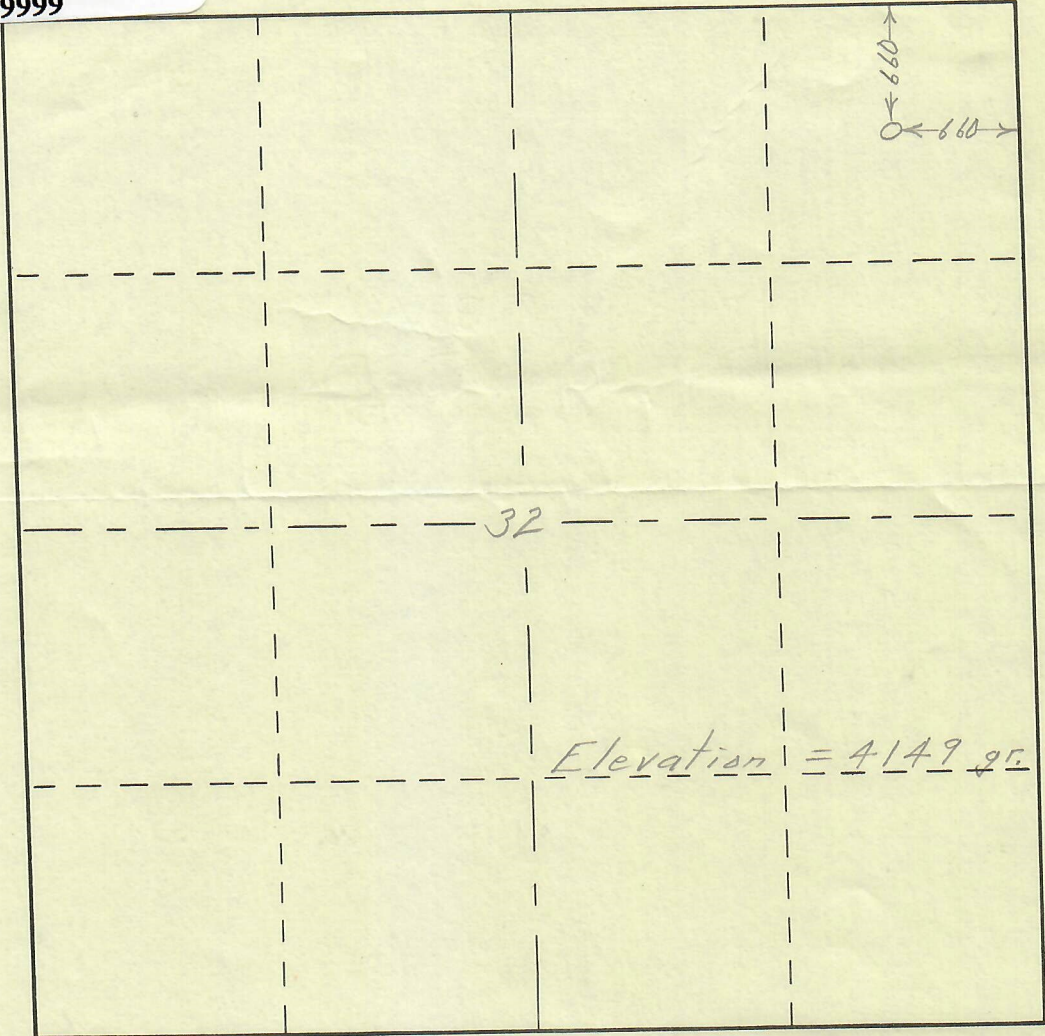


075-062-56 684-3

R. 53 W



T.  
9  
N

Scale ... 1" = 1000'

Powers Elevation Company of Casper, Wyoming  
has in accordance with a request from "Speck"  
for McDermott & Barnhart determined the  
Location of #1 Pullens  
to be C NE NE Section 32 Township 9N  
Range 53 W of the Sixth Principal Meridian  
Logan County, Colo

The above Plat shows the location of the well site  
in said section.



Powers Elevation Company  
by: Thomas E Nelson

Date: 7-1-54