

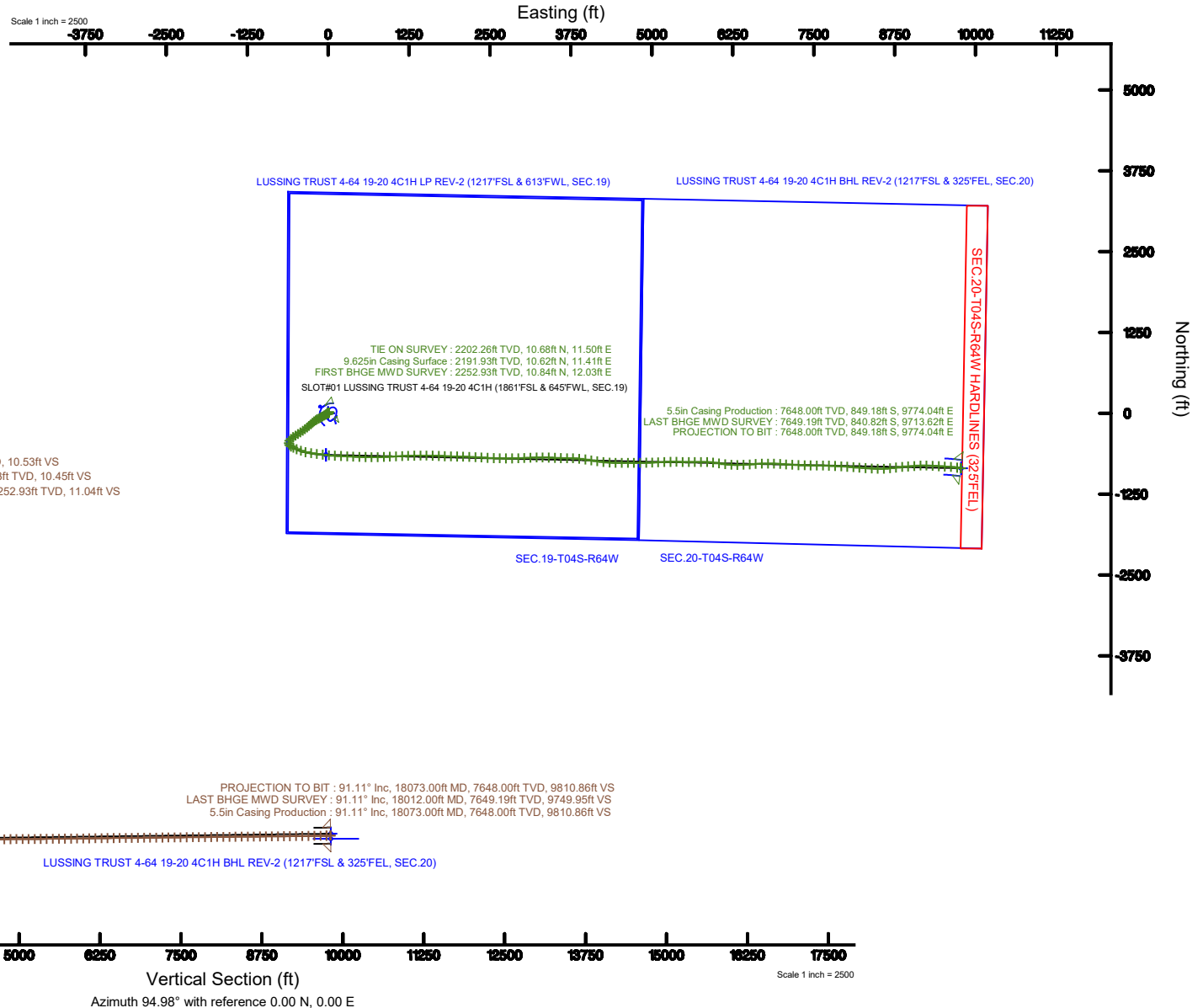
# BURLINGTON RESOURCES

Location: COLORADO Slot: SLOT#01 LUSSING TRUST 4-64 19-20 4C1H (1861'FSL & 645'FWL, SEC.19)  
Field: ARAPAHOE COUNTY (NAD83/TN) Well: LUSSING TRUST 4-64 19-20 4C1H  
Facility: SEC.19-T04S-R64W Wellbore: LUSSING TRUST 4-64 19-20 4C1H PWB



## BURLINGTON RESOURCES

Plot reference wellpath is LUSSING TRUST 4-64 19-20 4C1H (REV-C.0) PWP	Grid System: NAD83 / Lambert Colorado SP, Central Zone (502), US feet
True vertical depths are referenced to NABORS B16 (25'KB) (RKB)	North Reference: True north
Measured depths are referenced to NABORS B16 (25'KB) (RKB)	Scale: True distance
NABORS B16 (25'KB) (RKB) to Mean Sea Level: 5740 feet	Depths are in feet
Mean Sea Level to Mud line (At Slot: SLOT#01 LUSSING TRUST 4-64 19-20 4C1H (1861'FSL & 645'FWL, SEC.19)): 0 feet	Created by: komeraf on 2019-02-21
Coordinates are in feet referenced to Slot	Database: WA DENVER





# Actual Wellpath Report

LUSSING TRUST 4-64 19-20 4C1H AWP

Page 1 of 7



REFERENCE WELLPATH IDENTIFICATION			
Operator	BURLINGTON RESOURCES	Slot	SLOT#01 LUSSING TRUST 4-64 19-20 4C1H (1861'FSL & 645'FWL, SEC.19)
Area	COLORADO	Well	LUSSING TRUST 4-64 19-20 4C1H
Field	ARAPAHOE COUNTY (NAD83/TN)	Wellbore	LUSSING TRUST 4-64 19-20 4C1H AWB
Facility	SEC.19-T04S-R64W		

REPORT SETUP INFORMATION			
Projection System	NAD83 / Lambert Colorado SP, Central Zone (502), US feet	Software System	WellArchitect® 5.1
North Reference	True	User	Komeraf
Scale	0.999988	Report Generated	2/21/2019 at 11:28:47 AM
Convergence at slot	0.57° East	Database/Source file	WA DENVER/LUSSING_TRUST_4-64_19-20_4C1H_AWP.xml

WELLPATH LOCATION						
	Local coordinates		Grid coordinates		Geographic coordinates	
	North[ft]	East[ft]	Easting[US ft]	Northing[US ft]	Latitude	Longitude
Slot Location	0.00	0.00	3252971.63	1676306.06	39°41'12.566"N	104°36'04.043"W
Facility Reference Pt			3252971.63	1676306.06	39°41'12.566"N	104°36'04.043"W
Field Reference Pt			3256721.09	1679994.75	39°41'48.650"N	104°35'15.610"W

WELLPATH DATUM			
Calculation method	Minimum curvature	NABORS B16 (25'KB) (RKB) to Facility Vertical Datum	5740.00ft
Horizontal Reference Pt	Slot	NABORS B16 (25'KB) (RKB) to Mean Sea Level	5740.00ft
Vertical Reference Pt	NABORS B16 (25'KB) (RKB)	NABORS B16 (25'KB) (RKB) to Mud Line at Slot (SLOT#01 LUSSING TRUST 4-64 19-20 4C1H (1861'FSL & 645'FWL, SEC.19))	5740.00ft
MD Reference Pt	NABORS B16 (25'KB) (RKB)	Section Origin	N 0.00, E 0.00 ft
Field Vertical Reference	Mean Sea Level	Section Azimuth	94.98°



# Actual Wellpath Report

LUSSING TRUST 4-64 19-20 4C1H AWP

Page 2 of 7



REFERENCE WELLPATH IDENTIFICATION			
Operator	BURLINGTON RESOURCES	Slot	SLOT#01 LUSSING TRUST 4-64 19-20 4C1H (1861'FSL & 645'FWL, SEC.19)
Area	COLORADO	Well	LUSSING TRUST 4-64 19-20 4C1H
Field	ARAPAHOE COUNTY (NAD83/TN)	Wellbore	LUSSING TRUST 4-64 19-20 4C1H AWP
Facility	SEC.19-T04S-R64W		

## WELLPATH DATA (170 stations)

MD [ft]	Inclination [°]	Azimuth [°]	TVD [ft]	Vert Sect [ft]	North [ft]	East [ft]	Grid East [US ft]	Grid North [US ft]	Latitude	Longitude	DLS [°/100ft]	Comments
2202.33	0.560	59.600	2202.26	10.53	10.68	11.50	3252983.02	1676316.85	39°41'12.672"N	104°36'03.896"W	0.36	TIE ON SURVEY
2253.00	0.730	82.210	2252.93	11.04	10.84	12.03	3252983.55	1676317.03	39°41'12.673"N	104°36'03.889"W	0.60	FIRST BHGE MWD SURVEY
2348.00	1.610	235.750	2347.92	10.60	10.18	11.53	3252983.05	1676316.35	39°41'12.667"N	104°36'03.896"W	2.41	
2442.00	2.830	235.450	2441.84	7.79	8.12	8.52	3252980.07	1676314.26	39°41'12.646"N	104°36'03.934"W	1.30	
2536.00	3.050	233.210	2535.72	4.13	5.30	4.61	3252976.18	1676311.41	39°41'12.618"N	104°36'03.984"W	0.26	
2631.00	3.460	235.790	2630.57	0.03	2.18	0.22	3252971.82	1676308.24	39°41'12.588"N	104°36'04.040"W	0.46	
2725.00	2.560	225.910	2724.44	-3.55	-0.88	-3.64	3252968.00	1676305.15	39°41'12.557"N	104°36'04.090"W	1.10	
2819.00	0.640	163.300	2818.40	-4.73	-2.84	-5.00	3252966.66	1676303.17	39°41'12.538"N	104°36'04.107"W	2.48	
2913.00	0.090	253.350	2912.40	-4.60	-3.37	-4.91	3252966.75	1676302.65	39°41'12.533"N	104°36'04.106"W	0.69	
3008.00	0.030	24.530	3007.40	-4.67	-3.36	-4.98	3252966.68	1676302.65	39°41'12.533"N	104°36'04.107"W	0.12	
3102.00	0.030	252.130	3101.40	-4.68	-3.35	-4.99	3252966.67	1676302.66	39°41'12.533"N	104°36'04.107"W	0.06	
3197.00	0.070	0.440	3196.40	-4.71	-3.30	-5.01	3252966.65	1676302.71	39°41'12.533"N	104°36'04.107"W	0.09	
3291.00	0.060	237.650	3290.40	-4.75	-3.27	-5.05	3252966.61	1676302.74	39°41'12.534"N	104°36'04.108"W	0.12	
3385.00	0.180	341.370	3384.40	-4.85	-3.16	-5.14	3252966.52	1676302.86	39°41'12.535"N	104°36'04.109"W	0.22	
3479.00	0.130	256.410	3478.40	-5.01	-3.04	-5.29	3252966.36	1676302.97	39°41'12.536"N	104°36'04.111"W	0.23	
3574.00	0.040	150.280	3573.40	-5.09	-3.09	-5.38	3252966.28	1676302.92	39°41'12.535"N	104°36'04.112"W	0.15	
3668.00	0.190	340.900	3667.40	-5.14	-2.98	-5.42	3252966.24	1676303.03	39°41'12.537"N	104°36'04.112"W	0.24	
3763.00	0.100	191.130	3762.40	-5.21	-2.91	-5.48	3252966.17	1676303.10	39°41'12.537"N	104°36'04.113"W	0.30	
3857.00	0.060	193.120	3856.40	-5.23	-3.04	-5.51	3252966.15	1676302.97	39°41'12.536"N	104°36'04.113"W	0.04	
3952.00	0.040	318.830	3951.40	-5.26	-3.06	-5.54	3252966.11	1676302.95	39°41'12.536"N	104°36'04.114"W	0.09	
4046.00	0.040	81.620	4045.40	-5.25	-3.03	-5.53	3252966.12	1676302.98	39°41'12.536"N	104°36'04.114"W	0.07	
4141.00	0.070	344.730	4140.40	-5.24	-2.97	-5.52	3252966.14	1676303.04	39°41'12.537"N	104°36'04.114"W	0.09	
4234.00	0.130	294.460	4233.40	-5.36	-2.87	-5.63	3252966.03	1676303.14	39°41'12.538"N	104°36'04.115"W	0.11	
4329.00	0.180	299.700	4328.40	-5.59	-2.75	-5.85	3252965.80	1676303.25	39°41'12.539"N	104°36'04.118"W	0.05	
4423.00	0.220	319.260	4422.40	-5.86	-2.54	-6.10	3252965.55	1676303.46	39°41'12.541"N	104°36'04.121"W	0.08	
4517.00	0.140	265.940	4516.40	-6.10	-2.41	-6.33	3252965.32	1676303.59	39°41'12.542"N	104°36'04.124"W	0.19	
4612.00	0.110	338.060	4611.40	-6.26	-2.34	-6.48	3252965.17	1676303.66	39°41'12.543"N	104°36'04.126"W	0.16	
4706.00	0.040	137.170	4705.40	-6.27	-2.28	-6.49	3252965.16	1676303.72	39°41'12.543"N	104°36'04.126"W	0.16	
4801.00	0.400	242.980	4800.39	-6.53	-2.45	-6.77	3252964.88	1676303.54	39°41'12.542"N	104°36'04.130"W	0.43	
4895.00	2.240	245.120	4894.37	-8.40	-3.38	-8.73	3252962.93	1676302.60	39°41'12.533"N	104°36'04.155"W	1.96	
4990.00	4.120	244.970	4989.21	-12.97	-5.60	-13.50	3252958.18	1676300.33	39°41'12.511"N	104°36'04.216"W	1.98	
5085.00	5.470	239.610	5083.88	-19.61	-9.33	-20.50	3252951.22	1676296.53	39°41'12.474"N	104°36'04.305"W	1.50	
5179.00	6.140	241.520	5177.40	-27.46	-14.00	-28.78	3252942.98	1676291.78	39°41'12.428"N	104°36'04.411"W	0.74	
5273.00	8.350	236.080	5270.64	-36.97	-20.21	-38.87	3252932.96	1676285.47	39°41'12.366"N	104°36'04.540"W	2.46	
5368.00	10.720	236.760	5364.32	-49.28	-28.90	-51.98	3252919.93	1676276.65	39°41'12.280"N	104°36'04.708"W	2.50	
5462.00	12.850	239.020	5456.34	-64.61	-39.07	-68.26	3252903.76	1676266.32	39°41'12.180"N	104°36'04.916"W	2.32	
5557.00	13.560	239.820	5548.83	-82.27	-50.11	-86.94	3252885.18	1676255.10	39°41'12.071"N	104°36'05.155"W	0.77	
5651.00	13.680	240.690	5640.18	-100.46	-61.09	-106.16	3252866.07	1676243.93	39°41'11.962"N	104°36'05.401"W	0.25	
5745.00	13.970	242.030	5731.46	-119.16	-71.85	-125.88	3252846.47	1676232.97	39°41'11.856"N	104°36'05.653"W	0.46	
5840.00	14.970	243.120	5823.44	-139.21	-82.78	-146.95	3252825.51	1676221.83	39°41'11.748"N	104°36'05.923"W	1.09	
5934.00	15.880	241.110	5914.06	-160.20	-94.48	-169.04	3252803.53	1676209.91	39°41'11.632"N	104°36'06.205"W	1.12	
6029.00	17.290	235.840	6005.11	-181.94	-108.69	-192.10	3252780.61	1676195.48	39°41'11.492"N	104°36'06.500"W	2.17	
6123.00	18.810	229.920	6094.49	-203.48	-126.29	-215.26	3252757.63	1676177.65	39°41'11.318"N	104°36'06.796"W	2.53	
6217.00	21.780	228.320	6182.64	-226.16	-147.65	-239.89	3252733.22	1676156.05	39°41'11.107"N	104°36'07.111"W	3.21	
6312.00	23.400	228.470	6270.35	-251.24	-171.88	-267.17	3252706.17	1676131.55	39°41'10.867"N	104°36'07.460"W	1.71	



# Actual Wellpath Report

LUSSING TRUST 4-64 19-20 4C1H AWP

Page 3 of 7



REFERENCE WELLPATH IDENTIFICATION			
Operator	BURLINGTON RESOURCES	Slot	SLOT#01 LUSSING TRUST 4-64 19-20 4C1H (1861'FSL & 645'FWL, SEC.19)
Area	COLORADO	Well	LUSSING TRUST 4-64 19-20 4C1H
Field	ARAPAHOE COUNTY (NAD83/TN)	Wellbore	LUSSING TRUST 4-64 19-20 4C1H AWP
Facility	SEC.19-T04S-R64W		

## WELLPATH DATA (170 stations)

MD [ft]	Inclination [°]	Azimuth [°]	TVD [ft]	Vert Sect [ft]	North [ft]	East [ft]	Grid East [US ft]	Grid North [US ft]	Latitude	Longitude	DLS [°/100ft]	Comments
6406.00	24.010	228.900	6356.42	-277.35	-196.83	-295.56	3252678.04	1676106.32	39°41'10.621"N	104°36'07.824"W	0.67	
6500.00	24.610	230.120	6442.09	-304.49	-221.95	-324.99	3252648.85	1676080.91	39°41'10.372"N	104°36'08.200"W	0.83	
6595.00	26.030	231.810	6527.96	-333.72	-247.52	-356.55	3252617.54	1676055.03	39°41'10.120"N	104°36'08.604"W	1.68	
6689.00	27.060	235.750	6612.05	-365.33	-272.31	-390.44	3252583.90	1676029.91	39°41'09.875"N	104°36'09.037"W	2.17	
6784.00	28.590	237.000	6696.07	-399.98	-296.85	-427.37	3252547.22	1676005.00	39°41'09.632"N	104°36'09.510"W	1.72	
6878.00	27.990	237.220	6778.84	-435.15	-321.05	-464.78	3252510.05	1675980.44	39°41'09.393"N	104°36'09.988"W	0.65	
6972.00	28.390	236.950	6861.69	-470.19	-345.18	-502.06	3252473.02	1675955.94	39°41'09.155"N	104°36'10.465"W	0.45	
7067.00	28.320	237.420	6945.29	-505.84	-369.63	-539.97	3252435.34	1675931.12	39°41'08.913"N	104°36'10.950"W	0.25	
7161.00	26.650	229.750	7028.71	-538.38	-395.27	-574.87	3252400.71	1675905.13	39°41'08.660"N	104°36'11.396"W	4.16	
7255.00	24.130	205.690	7113.85	-560.08	-426.29	-599.35	3252376.53	1675873.87	39°41'08.353"N	104°36'11.709"W	11.22	
7350.00	21.770	177.670	7201.58	-564.72	-461.50	-607.08	3252369.15	1675838.59	39°41'08.005"N	104°36'11.808"W	11.66	
7444.00	19.360	145.950	7289.86	-552.65	-491.92	-597.62	3252378.91	1675808.26	39°41'07.704"N	104°36'11.687"W	11.98	
7539.00	22.020	123.960	7378.86	-527.11	-514.96	-573.99	3252402.77	1675785.46	39°41'07.477"N	104°36'11.385"W	8.59	
7633.00	31.780	114.740	7462.62	-488.29	-535.22	-536.79	3252440.17	1675765.57	39°41'07.276"N	104°36'10.909"W	11.26	
7727.00	41.350	110.930	7538.04	-435.01	-556.72	-485.18	3252491.99	1675744.57	39°41'07.064"N	104°36'10.249"W	10.46	
7822.00	50.460	109.290	7604.08	-369.20	-580.08	-421.15	3252556.24	1675721.85	39°41'06.833"N	104°36'09.430"W	9.67	
7916.00	59.500	104.250	7657.99	-293.92	-602.08	-347.51	3252630.10	1675700.58	39°41'06.616"N	104°36'08.488"W	10.57	
8011.00	69.690	98.140	7698.72	-208.76	-618.52	-263.45	3252714.31	1675684.98	39°41'06.453"N	104°36'07.413"W	12.19	
8105.00	76.990	96.380	7725.66	-118.84	-629.87	-174.18	3252803.69	1675674.51	39°41'06.341"N	104°36'06.271"W	7.97	
8199.00	83.590	96.540	7741.50	-26.27	-640.29	-82.17	3252895.80	1675665.00	39°41'06.238"N	104°36'05.094"W	7.02	
8294.00	90.860	95.510	7746.10	68.54	-650.24	12.13	3252990.19	1675655.99	39°41'06.140"N	104°36'03.888"W	7.73	
8388.00	91.140	92.790	7744.46	162.50	-657.04	105.86	3253083.98	1675650.11	39°41'06.073"N	104°36'02.689"W	2.91	
8482.00	90.950	92.580	7742.74	256.41	-661.44	199.74	3253177.90	1675646.64	39°41'06.029"N	104°36'01.488"W	0.30	
8577.00	90.920	92.880	7741.19	351.33	-665.96	294.62	3253272.82	1675643.06	39°41'05.984"N	104°36'00.274"W	0.32	
8671.00	90.890	92.480	7739.71	445.24	-670.36	388.51	3253366.74	1675639.59	39°41'05.941"N	104°35'59.074"W	0.43	
8765.00	90.860	92.390	7738.27	539.13	-674.35	482.41	3253460.68	1675636.53	39°41'05.901"N	104°35'57.872"W	0.10	
8860.00	90.710	91.710	7736.97	634.00	-677.75	577.34	3253555.64	1675634.07	39°41'05.868"N	104°35'56.658"W	0.73	
8954.00	90.400	90.570	7736.06	727.78	-679.62	671.32	3253649.62	1675633.13	39°41'05.849"N	104°35'55.456"W	1.26	
9048.00	90.460	88.840	7735.36	821.38	-679.14	765.31	3253743.61	1675634.54	39°41'05.854"N	104°35'54.254"W	1.84	
9143.00	90.460	87.870	7734.59	915.74	-676.41	860.26	3253838.53	1675638.21	39°41'05.881"N	104°35'53.039"W	1.02	
9237.00	90.280	86.840	7733.99	1008.91	-672.07	954.16	3253932.38	1675643.47	39°41'05.924"N	104°35'51.838"W	1.11	
9332.00	90.460	87.540	7733.37	1103.03	-667.41	1049.04	3254027.21	1675649.07	39°41'05.970"N	104°35'50.625"W	0.76	
9426.00	90.460	87.950	7732.62	1196.27	-663.71	1142.97	3254121.09	1675653.70	39°41'06.006"N	104°35'49.423"W	0.44	
9520.00	90.520	87.890	7731.81	1289.56	-660.30	1236.90	3254214.99	1675658.04	39°41'06.040"N	104°35'48.222"W	0.09	
9615.00	90.250	87.880	7731.18	1383.83	-656.80	1331.84	3254309.88	1675662.48	39°41'06.075"N	104°35'47.007"W	0.28	
9709.00	90.310	89.420	7730.72	1477.25	-654.58	1425.81	3254403.82	1675665.63	39°41'06.096"N	104°35'45.805"W	1.64	
9803.00	90.310	90.630	7730.21	1570.90	-654.62	1519.80	3254497.81	1675666.52	39°41'06.096"N	104°35'44.603"W	1.29	
9898.00	90.310	91.990	7729.69	1665.70	-656.80	1614.77	3254592.80	1675665.29	39°41'06.074"N	104°35'43.388"W	1.43	
9992.00	90.460	92.590	7729.06	1759.59	-660.55	1708.70	3254686.75	1675662.46	39°41'06.037"N	104°35'42.187"W	0.66	
10087.00	90.250	92.860	7728.47	1854.52	-665.07	1803.59	3254781.68	1675658.88	39°41'05.993"N	104°35'40.973"W	0.36	
10181.00	90.340	90.810	7727.99	1948.37	-668.08	1897.53	3254875.65	1675656.80	39°41'05.963"N	104°35'39.772"W	2.18	
10276.00	90.180	91.320	7727.56	2043.15	-669.84	1992.52	3254970.64	1675655.98	39°41'05.945"N	104°35'38.557"W	0.56	
10370.00	90.280	92.300	7727.18	2137.00	-672.81	2086.47	3255064.62	1675653.94	39°41'05.916"N	104°35'37.355"W	1.05	
10464.00	90.460	92.510	7726.57	2230.90	-676.76	2180.38	3255158.57	1675650.92	39°41'05.877"N	104°35'36.154"W	0.29	
10559.00	90.580	92.630	7725.71	2325.82	-681.02	2275.28	3255253.50	1675647.60	39°41'05.835"N	104°35'34.940"W	0.18	



# Actual Wellpath Report

LUSSING TRUST 4-64 19-20 4C1H AWP

Page 4 of 7



REFERENCE WELLPATH IDENTIFICATION			
Operator	BURLINGTON RESOURCES	Slot	SLOT#01 LUSSING TRUST 4-64 19-20 4C1H (1861'FSL & 645'FWL, SEC.19)
Area	COLORADO	Well	LUSSING TRUST 4-64 19-20 4C1H
Field	ARAPAHOE COUNTY (NAD83/TN)	Wellbore	LUSSING TRUST 4-64 19-20 4C1H AWP
Facility	SEC.19-T04S-R64W		

## WELLPATH DATA (170 stations)

MD [ft]	Inclination [°]	Azimuth [°]	TVD [ft]	Vert Sect [ft]	North [ft]	East [ft]	Grid East [US ft]	Grid North [US ft]	Latitude	Longitude	DLS [°/100ft]	Comments
10653.00	90.520	92.610	7724.81	2419.73	-685.31	2369.18	3255347.44	1675644.23	39°41'05.792"N	104°35'33.739"W	0.07	
10748.00	90.520	93.250	7723.95	2514.67	-690.17	2464.05	3255442.35	1675640.32	39°41'05.744"N	104°35'32.525"W	0.67	
10842.00	90.490	92.200	7723.12	2608.59	-694.64	2557.94	3255536.28	1675636.78	39°41'05.700"N	104°35'31.324"W	1.12	
10936.00	90.580	91.520	7722.24	2702.44	-697.69	2651.89	3255630.25	1675634.66	39°41'05.669"N	104°35'30.123"W	0.73	
11031.00	90.680	89.850	7721.20	2797.17	-698.82	2746.87	3255725.24	1675634.46	39°41'05.658"N	104°35'28.908"W	1.76	
11126.00	91.790	89.120	7719.15	2891.71	-697.97	2841.84	3255820.20	1675636.25	39°41'05.666"N	104°35'27.693"W	1.40	
11220.00	90.370	88.400	7717.38	2985.13	-695.94	2935.80	3255914.13	1675639.22	39°41'05.686"N	104°35'26.491"W	1.69	
11314.00	90.650	88.240	7716.54	3078.50	-693.18	3029.76	3256008.05	1675642.90	39°41'05.714"N	104°35'25.289"W	0.34	
11409.00	90.520	87.000	7715.57	3172.71	-689.24	3124.67	3256102.92	1675647.79	39°41'05.752"N	104°35'24.075"W	1.31	
11503.00	90.400	87.220	7714.82	3265.82	-684.50	3218.54	3256196.74	1675653.45	39°41'05.799"N	104°35'22.874"W	0.27	
11597.00	90.460	90.830	7714.11	3359.29	-682.90	3312.51	3256290.69	1675655.98	39°41'05.815"N	104°35'21.672"W	3.84	
11691.00	90.370	92.810	7713.43	3453.14	-685.88	3406.46	3256384.66	1675653.93	39°41'05.785"N	104°35'20.471"W	2.11	
11786.00	90.460	92.520	7712.74	3548.06	-690.30	3501.35	3256479.59	1675650.45	39°41'05.741"N	104°35'19.257"W	0.32	
11881.00	90.340	92.070	7712.08	3642.96	-694.10	3596.27	3256574.54	1675647.58	39°41'05.704"N	104°35'18.043"W	0.49	
11975.00	90.400	90.240	7711.47	3736.74	-696.00	3690.25	3256668.53	1675646.62	39°41'05.685"N	104°35'16.841"W	1.95	
12069.00	90.280	91.660	7710.91	3830.50	-697.56	3784.23	3256762.52	1675645.99	39°41'05.669"N	104°35'15.639"W	1.52	
12164.00	90.370	96.160	7710.37	3925.46	-704.03	3878.98	3256857.33	1675640.45	39°41'05.605"N	104°35'14.427"W	4.74	
12258.00	90.310	97.810	7709.82	4019.40	-715.46	3972.28	3256950.74	1675629.95	39°41'05.492"N	104°35'13.233"W	1.76	
12352.00	90.430	98.640	7709.21	4113.24	-728.91	4065.31	3257043.90	1675617.42	39°41'05.359"N	104°35'12.043"W	0.89	
12446.00	90.490	98.500	7708.45	4207.06	-742.92	4158.26	3257136.98	1675604.33	39°41'05.220"N	104°35'10.855"W	0.16	
12541.00	90.550	96.130	7707.59	4301.97	-755.01	4252.48	3257231.31	1675593.17	39°41'05.101"N	104°35'09.650"W	2.50	
12635.00	90.430	94.010	7706.79	4395.96	-763.32	4346.10	3257325.01	1675585.79	39°41'05.019"N	104°35'08.452"W	2.26	
12729.00	90.580	90.220	7705.96	4489.82	-766.79	4440.01	3257418.95	1675583.25	39°41'04.984"N	104°35'07.251"W	4.03	
12823.00	90.430	89.530	7705.13	4583.44	-766.58	4534.01	3257512.94	1675584.39	39°41'04.986"N	104°35'06.048"W	0.75	
12918.00	90.370	90.650	7704.47	4678.09	-766.73	4629.01	3257607.93	1675585.18	39°41'04.984"N	104°35'04.833"W	1.18	
13012.00	90.340	90.310	7703.88	4771.80	-767.52	4723.00	3257701.92	1675585.32	39°41'04.976"N	104°35'03.631"W	0.36	
13106.00	90.520	89.410	7703.18	4865.42	-767.29	4817.00	3257795.91	1675586.48	39°41'04.978"N	104°35'02.429"W	0.98	
13201.00	90.430	88.420	7702.39	4959.89	-765.49	4911.98	3257890.87	1675589.22	39°41'04.996"N	104°35'01.214"W	1.05	
13295.00	90.460	87.790	7701.66	5053.21	-762.38	5005.92	3257984.78	1675593.26	39°41'05.027"N	104°35'00.012"W	0.67	
13388.00	90.490	88.270	7700.89	5145.52	-759.19	5098.86	3258077.68	1675597.37	39°41'05.058"N	104°34'58.823"W	0.52	
13483.00	90.340	87.600	7700.20	5239.80	-755.76	5193.80	3258172.58	1675601.74	39°41'05.092"N	104°34'57.609"W	0.72	
13576.00	90.430	88.500	7699.58	5332.12	-752.60	5286.74	3258265.48	1675605.82	39°41'05.123"N	104°34'56.420"W	0.97	
13671.00	90.650	90.810	7698.68	5426.70	-752.03	5381.73	3258360.46	1675607.33	39°41'05.128"N	104°34'55.205"W	2.44	
13765.00	90.680	91.380	7697.59	5520.47	-753.82	5475.70	3258454.45	1675606.47	39°41'05.110"N	104°34'54.003"W	0.61	
13859.00	90.740	90.750	7696.43	5614.25	-755.57	5569.68	3258548.43	1675605.65	39°41'05.093"N	104°34'52.801"W	0.67	
13953.00	90.580	89.100	7695.34	5707.87	-755.45	5663.67	3258642.42	1675606.70	39°41'05.094"N	104°34'51.599"W	1.76	
14048.00	90.580	89.590	7694.38	5802.41	-754.36	5758.66	3258737.39	1675608.73	39°41'05.104"N	104°34'50.384"W	0.52	
14142.00	90.550	91.660	7693.45	5896.13	-755.39	5852.64	3258831.38	1675608.63	39°41'05.094"N	104°34'49.182"W	2.20	
14236.00	90.520	97.710	7692.58	5990.08	-763.06	5946.28	3258925.09	1675601.88	39°41'05.018"N	104°34'47.984"W	6.44	
14330.00	91.480	98.390	7690.94	6083.93	-776.22	6039.34	3259018.27	1675589.65	39°41'04.888"N	104°34'46.794"W	1.25	
14425.00	90.580	96.620	7689.23	6178.81	-788.63	6133.51	3259112.55	1675578.17	39°41'04.765"N	104°34'45.589"W	2.09	
14519.00	90.830	93.260	7688.07	6272.79	-796.72	6227.14	3259206.26	1675571.01	39°41'04.685"N	104°34'44.392"W	3.58	
14613.00	90.520	89.870	7686.96	6366.61	-799.29	6321.08	3259300.22	1675569.37	39°41'04.659"N	104°34'43.190"W	3.62	
14708.00	90.310	87.190	7686.28	6460.99	-796.85	6416.04	3259395.15	1675572.75	39°41'04.683"N	104°34'41.975"W	2.83	
14802.00	90.580	86.490	7685.55	6554.04	-791.67	6509.89	3259488.94	1675578.86	39°41'04.734"N	104°34'40.775"W	0.80	



# Actual Wellpath Report

LUSSING TRUST 4-64 19-20 4C1H AWP

Page 5 of 7



REFERENCE WELLPATH IDENTIFICATION			
Operator	BURLINGTON RESOURCES	Slot	SLOT#01 LUSSING TRUST 4-64 19-20 4C1H (1861'FSL & 645'FWL, SEC.19)
Area	COLORADO	Well	LUSSING TRUST 4-64 19-20 4C1H
Field	ARAPAHOE COUNTY (NAD83/TN)	Wellbore	LUSSING TRUST 4-64 19-20 4C1H AWB
Facility	SEC.19-T04S-R64W		

## WELLPATH DATA (170 stations)

MD [ft]	Inclination [°]	Azimuth [°]	TVD [ft]	Vert Sect [ft]	North [ft]	East [ft]	Grid East [US ft]	Grid North [US ft]	Latitude	Longitude	DLS [°/100ft]	Comments
14897.00	90.580	85.690	7684.58	6647.90	-785.19	6604.67	3259583.65	1675586.27	39°41'04.798"N	104°34'39.563"W	0.84	
14991.00	90.620	88.300	7683.60	6740.97	-780.26	6698.52	3259677.45	1675592.13	39°41'04.846"N	104°34'38.362"W	2.78	
15085.00	90.550	89.960	7682.64	6834.47	-778.84	6792.50	3259771.41	1675594.48	39°41'04.860"N	104°34'37.160"W	1.77	
15180.00	90.710	92.240	7681.59	6929.24	-780.66	6887.47	3259866.39	1675593.60	39°41'04.842"N	104°34'35.945"W	2.41	
15274.00	90.800	93.160	7680.36	7023.16	-785.09	6981.36	3259960.32	1675590.10	39°41'04.798"N	104°34'34.744"W	0.98	
15368.00	90.830	93.880	7679.02	7117.12	-790.86	7075.17	3260054.18	1675585.26	39°41'04.740"N	104°34'33.544"W	0.77	
15463.00	90.650	93.660	7677.79	7212.09	-797.10	7169.96	3260149.02	1675579.95	39°41'04.678"N	104°34'32.332"W	0.30	
15557.00	90.680	92.870	7676.70	7306.04	-802.46	7263.80	3260242.91	1675575.53	39°41'04.625"N	104°34'31.132"W	0.84	
15652.00	90.580	91.340	7675.66	7400.91	-805.95	7358.73	3260337.87	1675572.98	39°41'04.590"N	104°34'29.918"W	1.61	
15746.00	90.580	90.130	7674.70	7494.65	-807.15	7452.71	3260431.86	1675572.70	39°41'04.578"N	104°34'28.715"W	1.29	
15841.00	90.610	90.390	7673.72	7589.32	-807.58	7547.71	3260526.85	1675573.21	39°41'04.574"N	104°34'27.500"W	0.28	
15935.00	90.580	90.760	7672.74	7683.04	-808.53	7641.70	3260620.84	1675573.20	39°41'04.564"N	104°34'26.298"W	0.39	
16029.00	90.680	92.320	7671.71	7776.86	-811.05	7735.65	3260714.82	1675571.60	39°41'04.539"N	104°34'25.096"W	1.66	
16124.00	90.580	93.180	7670.66	7871.78	-815.61	7830.54	3260809.74	1675567.98	39°41'04.494"N	104°34'23.883"W	0.91	
16218.00	90.620	93.740	7669.68	7965.74	-821.28	7924.36	3260903.62	1675563.24	39°41'04.437"N	104°34'22.683"W	0.60	
16312.00	90.610	93.980	7668.67	8059.72	-827.61	8018.14	3260997.45	1675557.84	39°41'04.374"N	104°34'21.483"W	0.26	
16407.00	90.520	93.800	7667.73	8154.70	-834.05	8112.92	3261092.29	1675552.33	39°41'04.310"N	104°34'20.271"W	0.21	
16501.00	90.620	94.700	7666.80	8248.68	-841.02	8206.66	3261186.09	1675546.29	39°41'04.241"N	104°34'19.072"W	0.96	
16595.00	90.650	94.480	7665.76	8342.68	-848.54	8300.35	3261279.85	1675539.70	39°41'04.167"N	104°34'17.874"W	0.24	
16690.00	90.580	93.340	7664.74	8437.65	-855.02	8395.12	3261374.68	1675534.16	39°41'04.102"N	104°34'16.661"W	1.20	
16784.00	90.620	91.260	7663.75	8531.54	-858.79	8489.03	3261468.62	1675531.32	39°41'04.065"N	104°34'15.460"W	2.21	
16878.00	90.580	87.530	7662.77	8625.07	-857.80	8583.01	3261562.58	1675533.24	39°41'04.074"N	104°34'14.258"W	3.97	
16973.00	90.680	84.100	7661.72	8718.84	-850.87	8677.73	3261657.23	1675541.11	39°41'04.142"N	104°34'13.046"W	3.61	
17067.00	90.550	83.560	7660.71	8811.06	-840.77	8771.18	3261750.58	1675552.13	39°41'04.242"N	104°34'11.851"W	0.59	
17161.00	90.520	84.700	7659.84	8903.37	-831.15	8864.69	3261843.98	1675562.67	39°41'04.337"N	104°34'10.655"W	1.21	
17256.00	90.520	85.660	7658.97	8996.98	-823.17	8959.34	3261938.55	1675571.59	39°41'04.415"N	104°34'09.444"W	1.01	
17350.00	90.680	85.910	7657.99	9089.77	-816.26	9053.08	3262032.22	1675579.43	39°41'04.483"N	104°34'08.245"W	0.32	
17445.00	90.620	86.830	7656.91	9183.69	-810.25	9147.89	3262126.96	1675586.38	39°41'04.542"N	104°34'07.033"W	0.97	
17540.00	90.710	91.930	7655.81	9278.20	-809.22	9242.84	3262221.90	1675588.34	39°41'04.552"N	104°34'05.818"W	5.37	
17635.00	90.650	93.520	7654.68	9373.12	-813.74	9337.73	3262316.82	1675584.77	39°41'04.507"N	104°34'04.604"W	1.67	
17729.00	90.740	93.140	7653.54	9467.07	-819.20	9431.56	3262410.70	1675580.24	39°41'04.453"N	104°34'03.404"W	0.42	
17823.00	90.740	93.550	7652.33	9561.02	-824.68	9525.39	3262504.58	1675575.68	39°41'04.398"N	104°34'02.204"W	0.44	
17918.00	90.980	94.100	7650.90	9655.99	-831.02	9620.17	3262599.41	1675570.28	39°41'04.335"N	104°34'00.992"W	0.63	
18012.00	91.110	97.880	7649.19	9749.95	-840.82	9713.62	3262692.96	1675561.40	39°41'04.238"N	104°33'59.796"W	4.02	LAST BHGE MWD SURVEY
18073.00	91.110	97.880	7648.00	9810.86	-849.18	9774.04	3262753.45	1675553.64	39°41'04.155"N	104°33'59.024"W	0.00	PROJECTION TO BIT

## HOLE & CASING SECTIONS

- Ref Wellbore: LUSSING TRUST 4-64 19-20 4C1H AWP				Ref Wellpath: LUSSING TRUST 4-64 19-20 4C1H AWP					
String/Diameter	Start MD [ft]	End MD [ft]	Interval [ft]	Start TVD [ft]	End TVD [ft]	Start N/S [ft]	Start E/W [ft]	End N/S [ft]	End E/W [ft]
9.625in Casing Surface	25.00	2192.00	2167.00	25.00	2191.93	0.00	0.00	10.62	11.41
8.75in Open Hole	2192.00	18073.00	15881.00	2191.93	7648.00	10.62	11.41	-849.18	9774.04
5.5in Casing Production	25.00	18073.00	18048.00	25.00	7648.00	0.00	0.00	-849.18	9774.04



## Actual Wellpath Report

LUSSING TRUST 4-64 19-20 4C1H AWP

Page 6 of 7



REFERENCE WELLPATH IDENTIFICATION			
Operator	BURLINGTON RESOURCES	Slot	SLOT#01 LUSSING TRUST 4-64 19-20 4C1H (1861'FSL & 645'FWL, SEC.19)
Area	COLORADO	Well	LUSSING TRUST 4-64 19-20 4C1H
Field	ARAPAHOE COUNTY (NAD83/TN)	Wellbore	LUSSING TRUST 4-64 19-20 4C1H AWB
Facility	SEC.19-T04S-R64W		

TARGETS								
Name	TVD [ft]	North [ft]	East [ft]	Grid East [US ft]	Grid North [US ft]	Latitude	Longitude	Shape
SEC.19-T04S-R64W	0.00	0.04	0.02	3252971.64	1676306.10	39°41'12.566"N	104°36'04.043"W	polygon
SEC.20-T04S-R64W	0.00	0.04	0.02	3252971.64	1676306.10	39°41'12.566"N	104°36'04.043"W	polygon
LUSSING TRUST 4-64 19-20 4C1H BHL REV-2 (1217'FSL & 325'FEL, SEC.20)	7618.00	-851.93	9775.88	3262755.33	1675550.91	39°41'04.128"N	104°33'59.000"W	point
LUSSING TRUST 4-64 19-20 4C1H BHL REV-1 (1217'FSL & 325'FEL, SEC.20)	7697.00	-851.93	9775.85	3262755.29	1675550.91	39°41'04.128"N	104°33'59.000"W	point
SEC.20-T04S-R64W HARDLINES (325'FEL)	7697.00	0.04	0.02	3252971.64	1676306.10	39°41'12.566"N	104°36'04.043"W	polygon
LUSSING TRUST 4-64 19-20 4C1H LP REV-2 (1217'FSL & 613'FWL, SEC.19)	7737.00	-643.23	-34.87	3252943.12	1675662.52	39°41'06.209"N	104°36'04.489"W	point
LUSSING TRUST 4-64 19-20 4C1H LP REV-1 (1217'FSL & 613'FWL, SEC.19)	7806.00	-643.26	-34.88	3252943.11	1675662.50	39°41'06.209"N	104°36'04.489"W	point

WELLPATH COMPOSITION - Ref Wellbore: LUSSING TRUST 4-64 19-20 4C1H AWB					Ref Wellpath: LUSSING TRUST 4-64 19-20 4C1H AWP	
Start MD [ft]	End MD [ft]	Positional Uncertainty Model	Log Name/Comment		Wellbore	
25.00	2202.33	SDI Keeper v1.04	SCIENTIFIC SURFACE SURVEYS <25 - 2202.33>		LUSSING TRUST 4-64 19-20 4C1H AWB	
2202.33	18012.00	BHI AutoTrak Curve (IFR1, Short)	BHGE AUTOTRAK CURVE (IFR1, SHORT) MONOBORE <2202.33 - 18012>		LUSSING TRUST 4-64 19-20 4C1H AWB	
18012.00	18073.00	Blind Drilling (std)	Projection to bit		LUSSING TRUST 4-64 19-20 4C1H AWB	



# Actual Wellpath Report

LUSSING TRUST 4-64 19-20 4C1H AWP

Page 7 of 7



REFERENCE WELLPATH IDENTIFICATION			
Operator	BURLINGTON RESOURCES	Slot	SLOT#01 LUSSING TRUST 4-64 19-20 4C1H (1861'FSL & 645'FWL, SEC.19)
Area	COLORADO	Well	LUSSING TRUST 4-64 19-20 4C1H
Field	ARAPAHOE COUNTY (NAD83/TN)	Wellbore	LUSSING TRUST 4-64 19-20 4C1H AWP
Facility	SEC.19-T04S-R64W		

WELLPATH COMMENTS				
MD [ft]	Inclination [°]	Azimuth [°]	TVD [ft]	Comment
2202.33	0.560	59.600	2202.26	TIE ON SURVEY
2253.00	0.730	82.210	2252.93	FIRST BHGE MWD SURVEY
18012.00	91.110	97.880	7649.19	LAST BHGE MWD SURVEY
18073.00	91.110	97.880	7648.00	PROJECTION TO BIT