



FORM F-106

RECEIVED

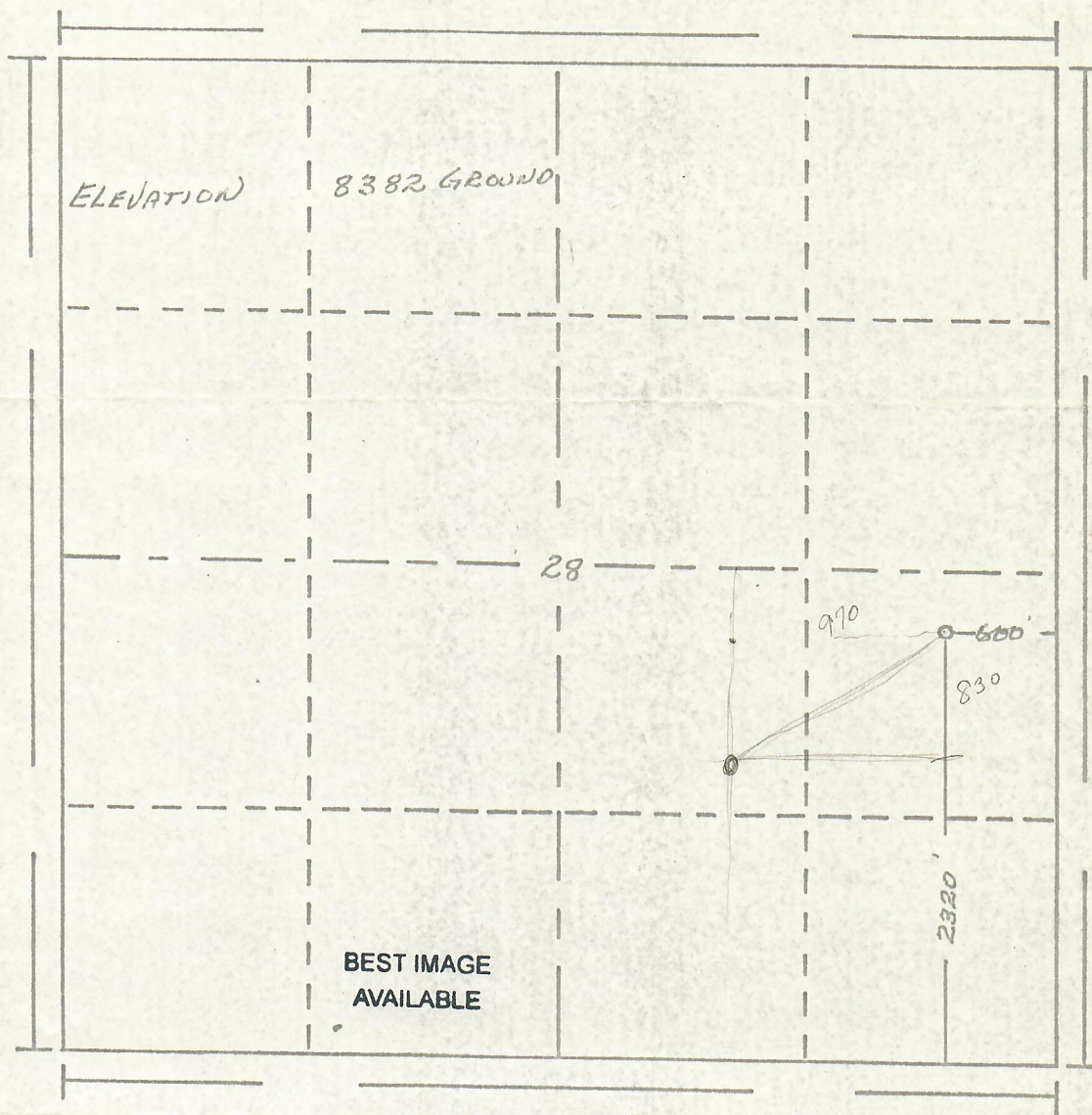
FEB 13 1973

OIL & GAS CONS. COMM



00216138

R. 81 W.



Scale... 1" = 1000'

Powers Elevation Company, Inc. of Denver, Colorado
has in accordance with a request from GLEN DOW
for TREND EXPLORATION LTD.
determined the location of #1-28 FEDERAL
to be 2320' FS E 600' FE Section 28 Township 7 N.
Range 81 W. OF 6TH PRINCIPAL Meridian
JACKSON County, COLORADO

I hereby certify that this plat is an
accurate representation of a correct
survey showing the location of

Date: 1-22-73

Licensed Land Surveyor No. 11052