

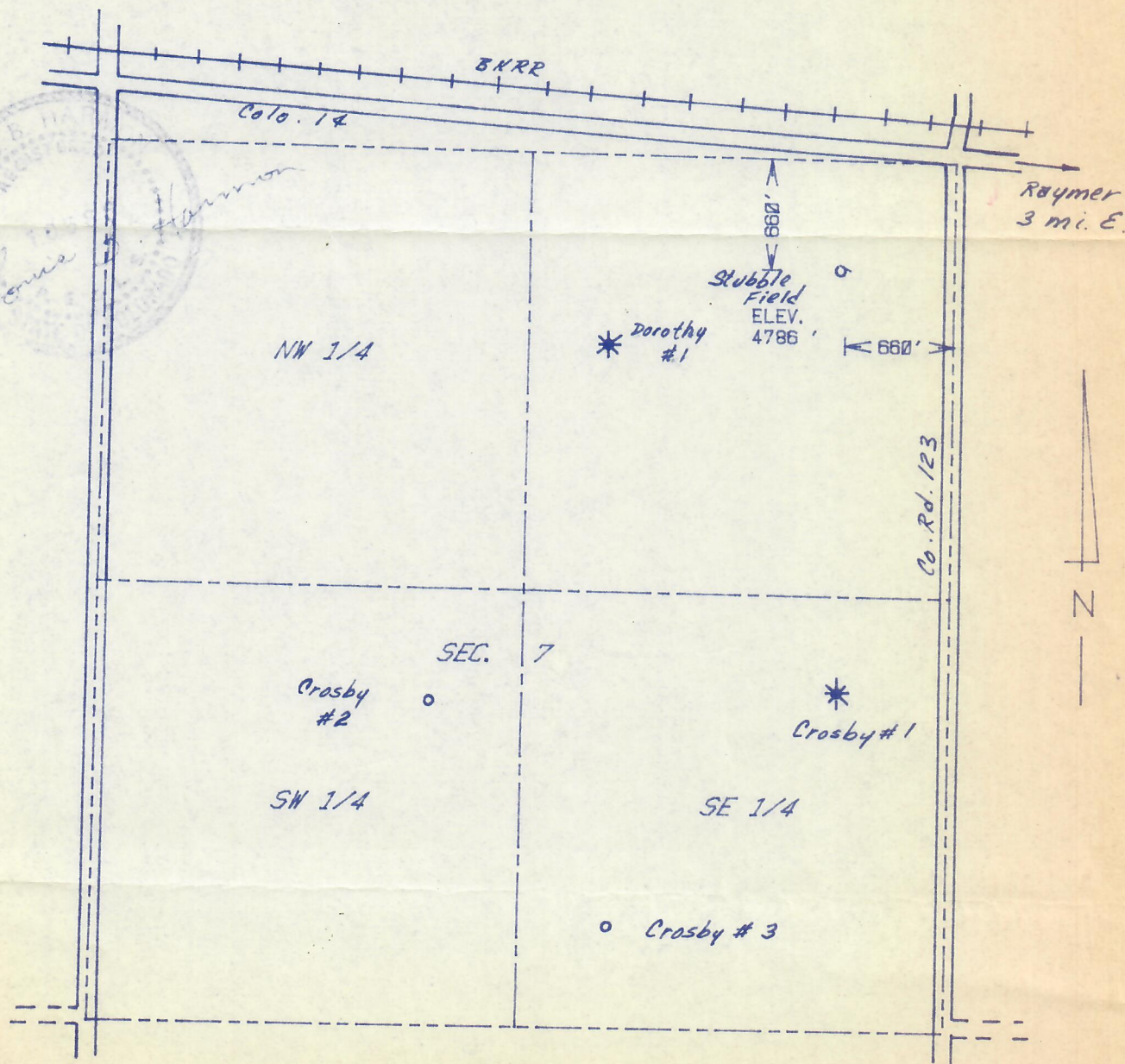


RECEIVED

FEB 26 1985

COLO. OIL & GAS CONS. COMM.

The accompanying plat is an accurate representation showing the location of a proposed well. This location may be described as a point 660 feet south of the north line, and 660 feet west of the east line of Section 7, Township 7 N Range 58 W of the 6th P.M., WELD County, COLORADO. The surface elevation at this point is 4786 feet m.s.l.



SCALE - 1"=1000'

○ SURVEYED POINT

NE 1/4 SEC. 7, T 7 N, R 58 W

HARMON
ENGINEERING
SERVICES

DOROTHY #2

WEEKS ENERGY MINERALS CORP.

WELD CO., COLORADO

12 FEB. 1985