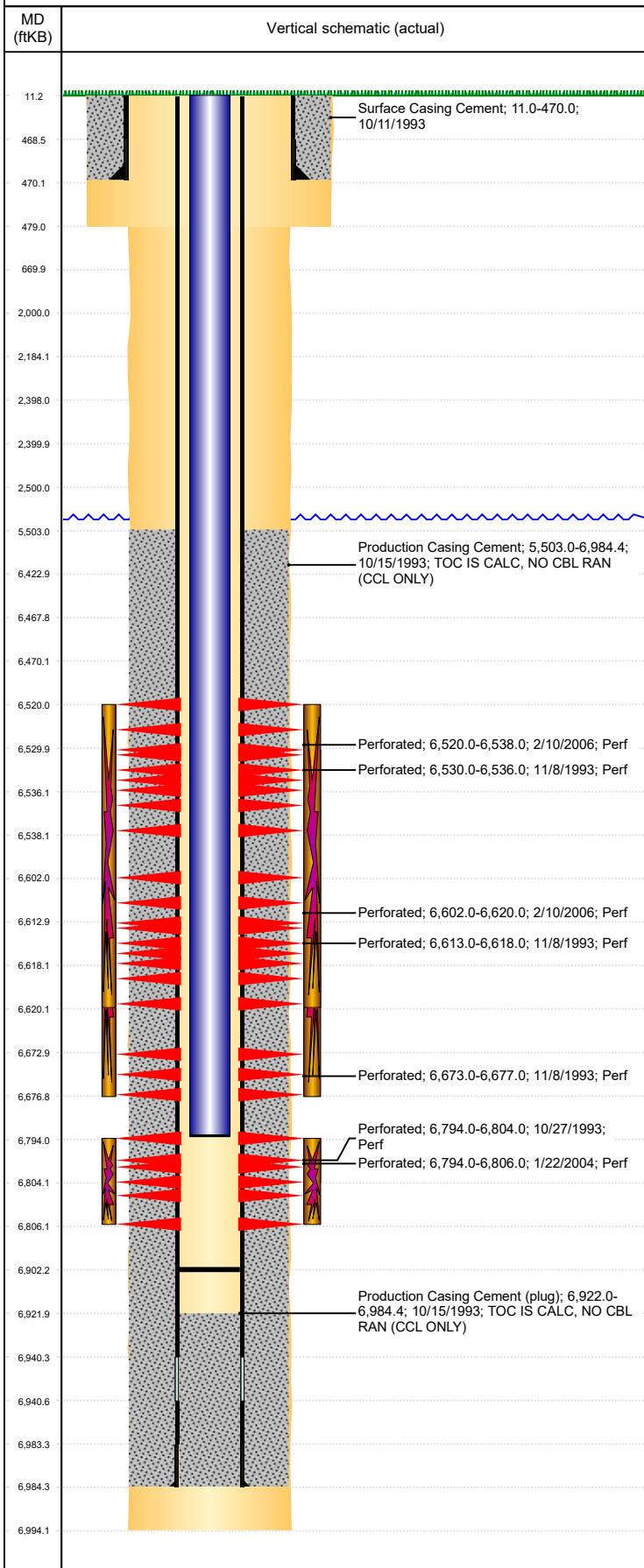


Well Name: RICHARDSON 10-13

VERTICAL, ORIGINAL HOLE, 9/25/2019 2:16:12 PM



Well Header									
API 05-123-17192		Business Unit DJ BASIN			District 15		Well Config VERTICAL		
KB - GL / MSL (ft... 11.00		Spud Date 10/11/1993		P & A Date		Well Production Status PR			SoRT No
Comment TOC IS CALC. (CCL ONLY)									
WELLHEAD IS 3000#									
Surface Location (Congressional)									
Qtr 3 SW	Qtr 4 SW	Section 10	Twnshp 4	Twnsh.... N	Range 64	Rng E/... W	Actual Latitude (°) 40.32195081	Actual Longitude (°) -104.54347279	
Wellbore Sections									
Section Des			Size (in)			Act Top, MD (ftKB)		Act Btm, MD (ftKB)	
SURFACE			12 1/4			11		479	
PRODUCTION			7 7/8			479		6,994	
Casing Strings									
Csg Des			Run Date		OD (in)	Wt/Len (lb/ft)	Grade	Top, MD (ftKB)	MD (ftKB)
Surface			10/11/1993		8 5/8	23.00	M-50	11.0	470.0
Production			10/15/1993		3 1/2	7.70	M-75	11.0	6,984.4
Cement									
Des					Start Date		Top (ftKB)		Btm (ftKB)
Surface Casing Cement					10/11/1993		11.0		470.0
Production Casing Cement					10/15/1993		5,503.0		6,984.4
Zone Statuses									
Zone Name	Status Date	Status	Fluid Type	Job				Prod Method	
CODELL	2/8/2006	SI		RE-FRAC, 2/8/2006 00:00					
CODELL	3/24/2006	PR		COMMINGLE ZONES, 3/20/2006 00:00					
NIOBRARA	3/8/2006	PR		RE-FRAC, 2/8/2006 00:00					
NIOBRARA	3/24/2006	PR		COMMINGLE ZONES, 3/20/2006 00:00					
Perforation Data									
Linked Zone		Bnch/Stg	Entered Shot Total	Top (ftKB)		Btm (ftKB)		Date	
NIOBRARA, ORIGINAL HOLE		A	108	6,520.00		6,538.00		2/10/2006	
NIOBRARA, ORIGINAL HOLE		A	6	6,530.00		6,536.00		11/8/1993	
NIOBRARA, ORIGINAL HOLE		B	108	6,602.00		6,620.00		2/10/2006	
NIOBRARA, ORIGINAL HOLE		B	12	6,613.00		6,618.00		11/8/1993	
NIOBRARA, ORIGINAL HOLE		C	6	6,673.00		6,677.00		11/8/1993	
CODELL, ORIGINAL HOLE			48	6,794.00		6,806.00		1/22/2004	
CODELL, ORIGINAL HOLE			20	6,794.00		6,804.00		10/27/1993	
Stimulation Intervals									
Zone				Start Date		Top (ftKB)		Btm (ftKB)	
NIOBRARA, ORIGINAL HOLE				3/6/2006		6,520.0		6,620.0	
NIOBRARA, ORIGINAL HOLE				11/9/1993		6,530.0		6,677.0	
CODELL, ORIGINAL HOLE				10/28/1993		6,794.0		6,804.0	
CODELL, ORIGINAL HOLE				1/29/2004		6,794.0		6,806.0	
Other In Hole									
Run Date		Des				OD (in)	Top (ftKB)	Btm (ftKB)	
Logs									
Date		Type				Top, MD (ftKB)		Btm, MD (ftKB)	
10/15/1993		COMPENSATED DENSITY				4,150.0		6,992.0	
10/15/1993		INDUCTION				470.0		6,992.0	
10/27/1993		COLLAR LOCATOR				6,350.0		6,913.0	
Plug Back Total Depths									
Date		Type		Com					Depth (ftKB)
2/3/2004		FILL		TAGGED FILL					6,877.0
3/22/2006		FILL		CLEAN OUT					6,902.4