



**BAYSWATER**

# **Bayswater Exploration & Production, LLC**

**DJ Basin**

**COT EAST Pad**

**COT E P-30-29HN**

**Wellbore #1**

**Plan: Design #1**

## **Standard Planning Report**

**18 September, 2019**



Pad Name: COT EAST Pad  
Well Name: COT E P-30-29HN  
Ground Level: 4946.0  
SHL Latitude: 40° 32' 38.832 N  
SHL Longitude: 104° 49' 29.305 W

## SECTION DETAILS

Sec	MD	Inc	Azi	TVD	+N/-S	+E/-W	Dleg	TFace	VSec	Target
1	0.0	0.00	0.00	0.0	0.0	0.0	0.00	0.00	0.0	
2	1500.0	0.00	0.00	1500.0	0.0	0.0	0.00	0.00	0.0	
3	1808.6	6.17	126.93	1808.0	-10.0	13.3	2.00	126.93	13.5	
4	6878.8	6.17	126.93	6848.8	-337.5	449.0	0.00	0.00	457.8	
5	7731.6	90.15	89.00	7372.0	-362.4	1021.9	10.00	-38.08	1031.1	COT E P-30-29HN LP
6	15387.3	90.15	89.00	7352.0	-229.4	8676.4	0.00	0.00	8679.4	COT E P-30-29HN PBHL

## DESIGN TARGET DETAILS

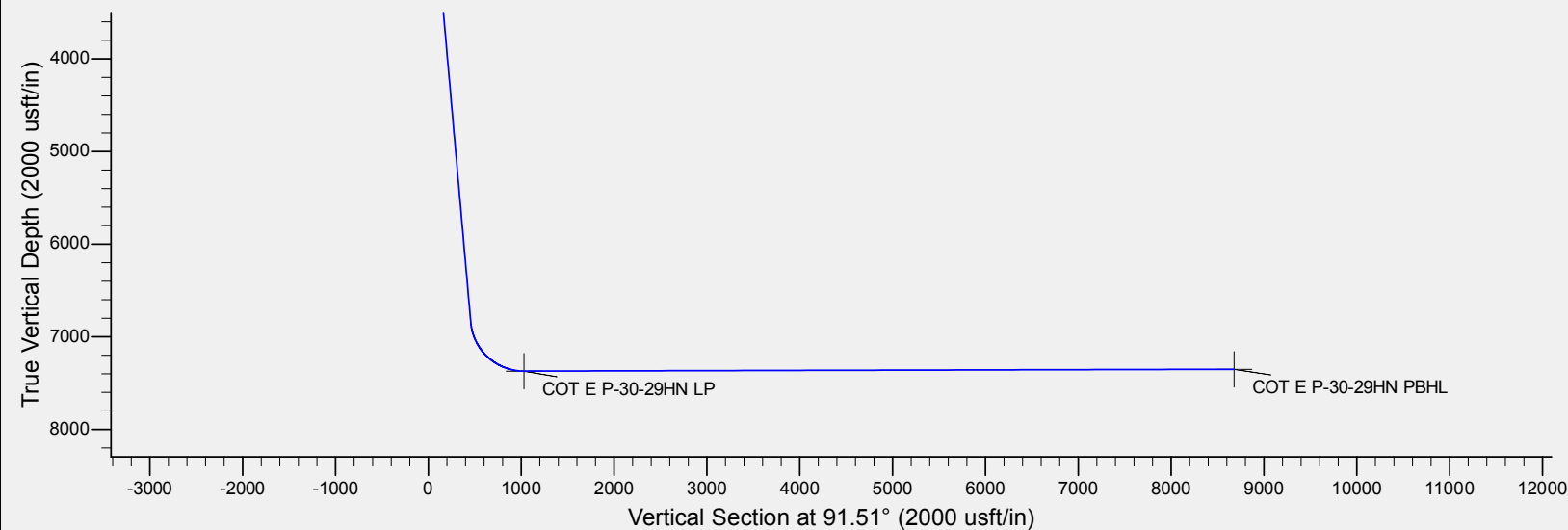
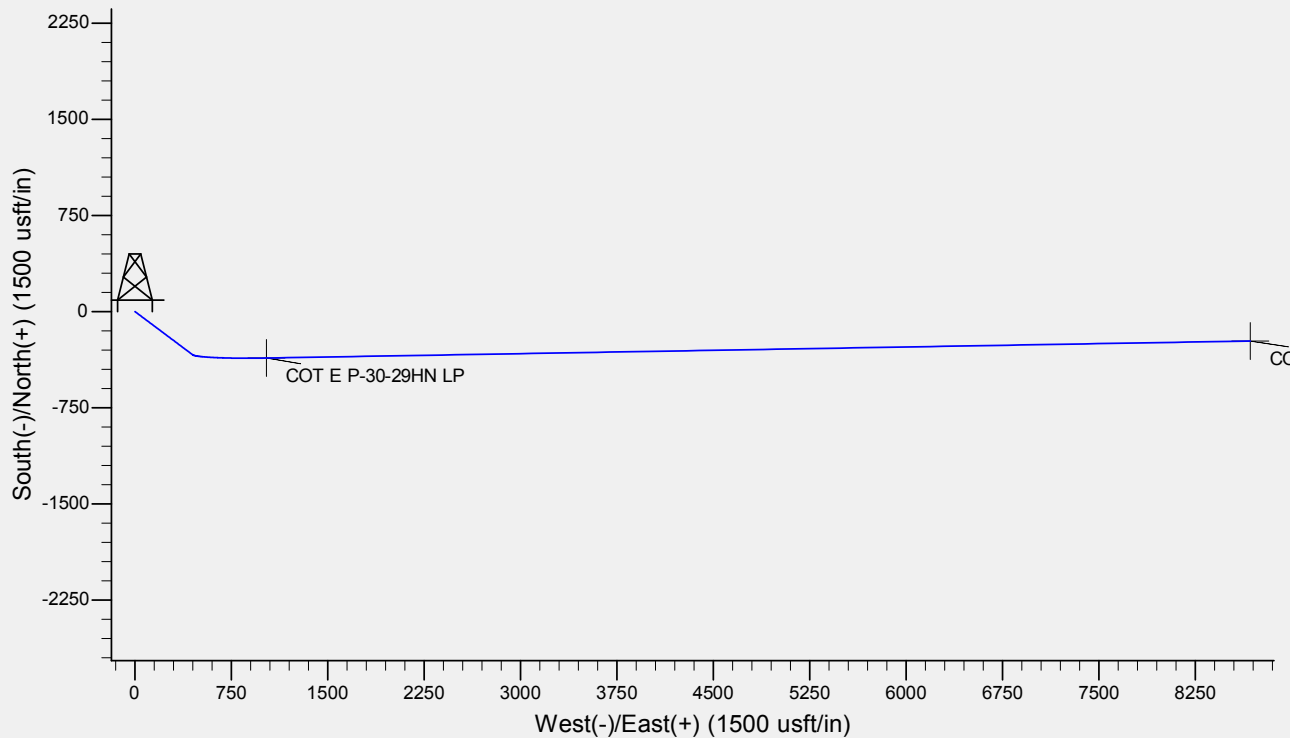
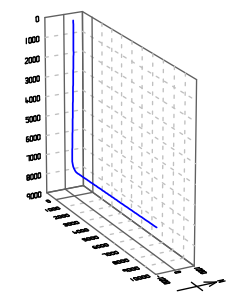
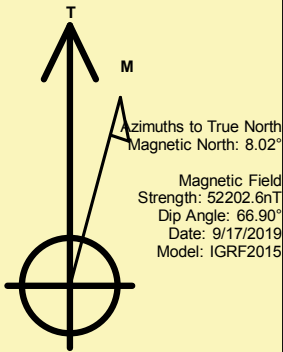
Name	TVD	+N/-S	+E/-W	Northing	Easting	Latitude	Longitude	Shape
COT E P-30-29HN LP	7372.0	-362.4	1021.9	1441423.47	3188671.31	40° 32' 35.250 N	104° 49' 16.068 W	Point
COT E P-30-29HN PBHL	- plan hits target center 7352.0	-229.4	8676.4	1441614.77	3196324.56	40° 32' 36.550 N	104° 47' 36.917 W	Point
	- plan hits target center							

## REFERENCE INFORMATION

Co-ordinate (N/E) Reference: Well COT E P-30-29HN, True North  
Vertical (TVD) Reference: WELL @ 4946.0usft (Original Well Elev)  
Section (VS) Reference: Slot - (0.0N, 0.0E)  
Measured Depth Reference: WELL @ 4946.0usft (Original Well Elev)  
Calculation Method: Minimum Curvature

## CASING DETAILS

No casing data is available





<b>Database:</b>	EDM	<b>Local Co-ordinate Reference:</b>	Well COT E P-30-29HN
<b>Company:</b>	Bayswater Exploration & Production, LLC	<b>TVD Reference:</b>	WELL @ 4946.0usft (Original Well Elev)
<b>Project:</b>	DJ Basin	<b>MD Reference:</b>	WELL @ 4946.0usft (Original Well Elev)
<b>Site:</b>	COT EAST Pad	<b>North Reference:</b>	True
<b>Well:</b>	COT E P-30-29HN	<b>Survey Calculation Method:</b>	Minimum Curvature
<b>Wellbore:</b>	Wellbore #1		
<b>Design:</b>	Design #1		

<b>Project</b>	DJ Basin, DJ Basin		
<b>Map System:</b>	US State Plane 1983	<b>System Datum:</b>	Mean Sea Level
<b>Geo Datum:</b>	North American Datum 1983		
<b>Map Zone:</b>	Colorado Northern Zone		

Site		COT EAST Pad			
Site Position:		Northing:	1,441,808.02 usft	Latitude:	40° 32' 39.127 N
From:	Lat/Long	Easting:	3,187,646.71 usft	Longitude:	104° 49' 29.302 W
Position Uncertainty:	0.0 usft	Slot Radius:	13-3/16 "	Grid Convergence:	0.44 °

Well	COT E P-30-29HN					
Well Position	+N/-S	-29.9 usft	Northing:	1,441,778.10 usft	Latitude:	40° 32' 38.832 N
	+E/-W	-0.3 usft	Easting:	3,187,646.66 usft	Longitude:	104° 49' 29.305 W
Position Uncertainty		0.0 usft	Wellhead Elevation:		Ground Level:	4,946.0 usft

<b>Wellbore</b>	Wellbore #1				
<b>Magnetics</b>	<b>Model Name</b>	<b>Sample Date</b>	<b>Declination (°)</b>	<b>Dip Angle (°)</b>	<b>Field Strength (nT)</b>
	IGRF2015	9/17/2019	8.02	66.90	52,202.62498990

<b>Design</b>	Design #1			
<b>Audit Notes:</b>				
<b>Version:</b>	<b>Phase:</b>	PLAN	<b>Tie On Depth:</b>	0.0
<b>Vertical Section:</b>	<b>Depth From (TVD) (usft)</b>	<b>+N/-S (usft)</b>	<b>+E/-W (usft)</b>	<b>Direction (°)</b>
	0.0	0.0	0.0	91.51

<b>Plan Survey Tool Program</b>	<b>Date</b>	9/17/2019		
<b>Depth From (usft)</b>	<b>Depth To (usft)</b>	<b>Survey (Wellbore)</b>	<b>Tool Name</b>	<b>Remarks</b>
1	0.0	15,387.3	Design #1 (Wellbore #1)	MWD
				OWSG MWD - Standard

<b>Plan Sections</b>										
<b>Measured Depth (usft)</b>	<b>Inclination (°)</b>	<b>Azimuth (°)</b>	<b>Vertical Depth (usft)</b>	<b>+N/-S (usft)</b>	<b>+E/-W (usft)</b>	<b>Dogleg Rate (°/100usft)</b>	<b>Build Rate (°/100usft)</b>	<b>Turn Rate (°/100usft)</b>	<b>TFO (°)</b>	<b>Target</b>
0.0	0.00	0.00	0.0	0.0	0.0	0.00	0.00	0.00	0.00	
1,500.0	0.00	0.00	1,500.0	0.0	0.0	0.00	0.00	0.00	0.00	
1,808.6	6.17	126.93	1,808.0	-10.0	13.3	2.00	2.00	0.00	126.93	
6,878.8	6.17	126.93	6,848.8	-337.5	449.0	0.00	0.00	0.00	0.00	
7,731.6	90.15	89.00	7,372.0	-362.4	1,021.9	10.00	9.85	-4.45	-38.08	COT E P-30-29HN LF
15,387.3	90.15	89.00	7,352.0	-229.4	8,676.4	0.00	0.00	0.00	0.00	COT E P-30-29HN PE



<b>Database:</b>	EDM	<b>Local Co-ordinate Reference:</b>	Well COT E P-30-29HN
<b>Company:</b>	Bayswater Exploration & Production, LLC	<b>TVD Reference:</b>	WELL @ 4946.0usft (Original Well Elev)
<b>Project:</b>	DJ Basin	<b>MD Reference:</b>	WELL @ 4946.0usft (Original Well Elev)
<b>Site:</b>	COT EAST Pad	<b>North Reference:</b>	True
<b>Well:</b>	COT E P-30-29HN	<b>Survey Calculation Method:</b>	Minimum Curvature
<b>Wellbore:</b>	Wellbore #1		
<b>Design:</b>	Design #1		

Planned Survey									
Measured Depth (usft)	Inclination (°)	Azimuth (°)	Vertical Depth (usft)	+N/-S (usft)	+E/-W (usft)	Vertical Section (usft)	Dogleg Rate (°/100usft)	Build Rate (°/100usft)	Turn Rate (°/100usft)
0.0	0.00	0.00	0.0	0.0	0.0	0.0	0.00	0.00	0.00
100.0	0.00	0.00	100.0	0.0	0.0	0.0	0.00	0.00	0.00
200.0	0.00	0.00	200.0	0.0	0.0	0.0	0.00	0.00	0.00
300.0	0.00	0.00	300.0	0.0	0.0	0.0	0.00	0.00	0.00
400.0	0.00	0.00	400.0	0.0	0.0	0.0	0.00	0.00	0.00
500.0	0.00	0.00	500.0	0.0	0.0	0.0	0.00	0.00	0.00
600.0	0.00	0.00	600.0	0.0	0.0	0.0	0.00	0.00	0.00
700.0	0.00	0.00	700.0	0.0	0.0	0.0	0.00	0.00	0.00
800.0	0.00	0.00	800.0	0.0	0.0	0.0	0.00	0.00	0.00
900.0	0.00	0.00	900.0	0.0	0.0	0.0	0.00	0.00	0.00
1,000.0	0.00	0.00	1,000.0	0.0	0.0	0.0	0.00	0.00	0.00
1,100.0	0.00	0.00	1,100.0	0.0	0.0	0.0	0.00	0.00	0.00
1,200.0	0.00	0.00	1,200.0	0.0	0.0	0.0	0.00	0.00	0.00
1,300.0	0.00	0.00	1,300.0	0.0	0.0	0.0	0.00	0.00	0.00
1,400.0	0.00	0.00	1,400.0	0.0	0.0	0.0	0.00	0.00	0.00
1,500.0	0.00	0.00	1,500.0	0.0	0.0	0.0	0.00	0.00	0.00
1,600.0	2.00	126.93	1,600.0	-1.0	1.4	1.4	2.00	2.00	0.00
1,700.0	4.00	126.93	1,699.8	-4.2	5.6	5.7	2.00	2.00	0.00
1,800.0	6.00	126.93	1,799.5	-9.4	12.5	12.8	2.00	2.00	0.00
1,808.6	6.17	126.93	1,808.0	-10.0	13.3	13.5	2.00	2.00	0.00
1,900.0	6.17	126.93	1,898.9	-15.9	21.1	21.5	0.00	0.00	0.00
2,000.0	6.17	126.93	1,998.3	-22.3	29.7	30.3	0.00	0.00	0.00
2,100.0	6.17	126.93	2,097.7	-28.8	38.3	39.1	0.00	0.00	0.00
2,200.0	6.17	126.93	2,197.1	-35.3	46.9	47.8	0.00	0.00	0.00
2,300.0	6.17	126.93	2,296.6	-41.7	55.5	56.6	0.00	0.00	0.00
2,400.0	6.17	126.93	2,396.0	-48.2	64.1	65.4	0.00	0.00	0.00
2,500.0	6.17	126.93	2,495.4	-54.6	72.7	74.1	0.00	0.00	0.00
2,600.0	6.17	126.93	2,594.8	-61.1	81.3	82.9	0.00	0.00	0.00
2,700.0	6.17	126.93	2,694.2	-67.6	89.9	91.6	0.00	0.00	0.00
2,800.0	6.17	126.93	2,793.7	-74.0	98.5	100.4	0.00	0.00	0.00
2,900.0	6.17	126.93	2,893.1	-80.5	107.1	109.2	0.00	0.00	0.00
3,000.0	6.17	126.93	2,992.5	-86.9	115.7	117.9	0.00	0.00	0.00
3,100.0	6.17	126.93	3,091.9	-93.4	124.3	126.7	0.00	0.00	0.00
3,200.0	6.17	126.93	3,191.3	-99.9	132.9	135.4	0.00	0.00	0.00
3,300.0	6.17	126.93	3,290.8	-106.3	141.4	144.2	0.00	0.00	0.00
3,400.0	6.17	126.93	3,390.2	-112.8	150.0	153.0	0.00	0.00	0.00
3,500.0	6.17	126.93	3,489.6	-119.2	158.6	161.7	0.00	0.00	0.00
3,600.0	6.17	126.93	3,589.0	-125.7	167.2	170.5	0.00	0.00	0.00
3,700.0	6.17	126.93	3,688.4	-132.2	175.8	179.3	0.00	0.00	0.00
3,800.0	6.17	126.93	3,787.9	-138.6	184.4	188.0	0.00	0.00	0.00
3,900.0	6.17	126.93	3,887.3	-145.1	193.0	196.8	0.00	0.00	0.00
4,000.0	6.17	126.93	3,986.7	-151.5	201.6	205.5	0.00	0.00	0.00
4,100.0	6.17	126.93	4,086.1	-158.0	210.2	214.3	0.00	0.00	0.00
4,200.0	6.17	126.93	4,185.5	-164.5	218.8	223.1	0.00	0.00	0.00
4,300.0	6.17	126.93	4,285.0	-170.9	227.4	231.8	0.00	0.00	0.00
4,400.0	6.17	126.93	4,384.4	-177.4	236.0	240.6	0.00	0.00	0.00
4,500.0	6.17	126.93	4,483.8	-183.8	244.6	249.4	0.00	0.00	0.00
4,600.0	6.17	126.93	4,583.2	-190.3	253.2	258.1	0.00	0.00	0.00
4,700.0	6.17	126.93	4,682.6	-196.8	261.8	266.9	0.00	0.00	0.00
4,800.0	6.17	126.93	4,782.1	-203.2	270.4	275.6	0.00	0.00	0.00
4,900.0	6.17	126.93	4,881.5	-209.7	279.0	284.4	0.00	0.00	0.00
5,000.0	6.17	126.93	4,980.9	-216.1	287.5	293.2	0.00	0.00	0.00
5,100.0	6.17	126.93	5,080.3	-222.6	296.1	301.9	0.00	0.00	0.00
5,200.0	6.17	126.93	5,179.7	-229.1	304.7	310.7	0.00	0.00	0.00



<b>Database:</b>	EDM	<b>Local Co-ordinate Reference:</b>	Well COT E P-30-29HN
<b>Company:</b>	Bayswater Exploration & Production, LLC	<b>TVD Reference:</b>	WELL @ 4946.0usft (Original Well Elev)
<b>Project:</b>	DJ Basin	<b>MD Reference:</b>	WELL @ 4946.0usft (Original Well Elev)
<b>Site:</b>	COT EAST Pad	<b>North Reference:</b>	True
<b>Well:</b>	COT E P-30-29HN	<b>Survey Calculation Method:</b>	Minimum Curvature
<b>Wellbore:</b>	Wellbore #1		
<b>Design:</b>	Design #1		

Planned Survey									
Measured Depth (usft)	Inclination (°)	Azimuth (°)	Vertical Depth (usft)	+N/-S (usft)	+E/-W (usft)	Vertical Section (usft)	Dogleg Rate (°/100usft)	Build Rate (°/100usft)	Turn Rate (°/100usft)
5,300.0	6.17	126.93	5,279.2	-235.5	313.3	319.4	0.00	0.00	0.00
5,400.0	6.17	126.93	5,378.6	-242.0	321.9	328.2	0.00	0.00	0.00
5,500.0	6.17	126.93	5,478.0	-248.4	330.5	337.0	0.00	0.00	0.00
5,600.0	6.17	126.93	5,577.4	-254.9	339.1	345.7	0.00	0.00	0.00
5,700.0	6.17	126.93	5,676.8	-261.4	347.7	354.5	0.00	0.00	0.00
5,800.0	6.17	126.93	5,776.3	-267.8	356.3	363.3	0.00	0.00	0.00
5,900.0	6.17	126.93	5,875.7	-274.3	364.9	372.0	0.00	0.00	0.00
6,000.0	6.17	126.93	5,975.1	-280.7	373.5	380.8	0.00	0.00	0.00
6,100.0	6.17	126.93	6,074.5	-287.2	382.1	389.5	0.00	0.00	0.00
6,200.0	6.17	126.93	6,173.9	-293.7	390.7	398.3	0.00	0.00	0.00
6,300.0	6.17	126.93	6,273.4	-300.1	399.3	407.1	0.00	0.00	0.00
6,400.0	6.17	126.93	6,372.8	-306.6	407.9	415.8	0.00	0.00	0.00
6,500.0	6.17	126.93	6,472.2	-313.0	416.5	424.6	0.00	0.00	0.00
6,600.0	6.17	126.93	6,571.6	-319.5	425.1	433.4	0.00	0.00	0.00
6,700.0	6.17	126.93	6,671.1	-326.0	433.6	442.1	0.00	0.00	0.00
6,800.0	6.17	126.93	6,770.5	-332.4	442.2	450.9	0.00	0.00	0.00
6,878.8	6.17	126.93	6,848.8	-337.5	449.0	457.8	0.00	0.00	0.00
6,900.0	7.95	117.43	6,869.9	-338.9	451.2	460.0	10.00	8.38	-44.78
7,000.0	17.40	101.26	6,967.3	-345.0	472.1	481.0	10.00	9.45	-16.17
7,100.0	27.23	96.43	7,059.7	-350.5	509.6	518.7	10.00	9.84	-4.83
7,200.0	37.15	94.05	7,144.3	-355.2	562.6	571.8	10.00	9.92	-2.39
7,300.0	47.11	92.55	7,218.3	-359.0	629.5	638.7	10.00	9.95	-1.49
7,400.0	57.07	91.48	7,279.7	-361.7	708.2	717.5	10.00	9.96	-1.07
7,500.0	67.04	90.63	7,326.5	-363.3	796.4	805.7	10.00	9.97	-0.85
7,600.0	77.02	89.89	7,357.3	-363.7	891.4	900.7	10.00	9.98	-0.74
7,700.0	86.99	89.21	7,371.2	-362.9	990.3	999.6	10.00	9.98	-0.68
7,731.6	90.15	89.00	7,372.0	-362.4	1,021.9	1,031.1	10.00	9.98	-0.66
COT E P-30-29HN LP									
7,800.0	90.15	89.00	7,371.8	-361.2	1,090.3	1,099.5	0.00	0.00	0.00
7,900.0	90.15	89.00	7,371.6	-359.5	1,190.3	1,199.4	0.00	0.00	0.00
8,000.0	90.15	89.00	7,371.3	-357.8	1,290.3	1,299.3	0.00	0.00	0.00
8,100.0	90.15	89.00	7,371.0	-356.0	1,390.2	1,399.2	0.00	0.00	0.00
8,200.0	90.15	89.00	7,370.8	-354.3	1,490.2	1,499.1	0.00	0.00	0.00
8,300.0	90.15	89.00	7,370.5	-352.6	1,590.2	1,599.0	0.00	0.00	0.00
8,400.0	90.15	89.00	7,370.3	-350.8	1,690.2	1,698.9	0.00	0.00	0.00
8,500.0	90.15	89.00	7,370.0	-349.1	1,790.2	1,798.8	0.00	0.00	0.00
8,600.0	90.15	89.00	7,369.7	-347.3	1,890.2	1,898.7	0.00	0.00	0.00
8,700.0	90.15	89.00	7,369.5	-345.6	1,990.1	1,998.6	0.00	0.00	0.00
8,800.0	90.15	89.00	7,369.2	-343.9	2,090.1	2,098.5	0.00	0.00	0.00
8,900.0	90.15	89.00	7,368.9	-342.1	2,190.1	2,198.4	0.00	0.00	0.00
9,000.0	90.15	89.00	7,368.7	-340.4	2,290.1	2,298.3	0.00	0.00	0.00
9,100.0	90.15	89.00	7,368.4	-338.7	2,390.1	2,398.2	0.00	0.00	0.00
9,200.0	90.15	89.00	7,368.2	-336.9	2,490.1	2,498.1	0.00	0.00	0.00
9,300.0	90.15	89.00	7,367.9	-335.2	2,590.1	2,598.0	0.00	0.00	0.00
9,400.0	90.15	89.00	7,367.6	-333.4	2,690.0	2,697.9	0.00	0.00	0.00
9,500.0	90.15	89.00	7,367.4	-331.7	2,790.0	2,797.8	0.00	0.00	0.00
9,600.0	90.15	89.00	7,367.1	-330.0	2,890.0	2,897.7	0.00	0.00	0.00
9,700.0	90.15	89.00	7,366.9	-328.2	2,990.0	2,997.6	0.00	0.00	0.00
9,800.0	90.15	89.00	7,366.6	-326.5	3,090.0	3,097.5	0.00	0.00	0.00
9,900.0	90.15	89.00	7,366.3	-324.7	3,190.0	3,197.4	0.00	0.00	0.00
10,000.0	90.15	89.00	7,366.1	-323.0	3,289.9	3,297.3	0.00	0.00	0.00
10,100.0	90.15	89.00	7,365.8	-321.3	3,389.9	3,397.2	0.00	0.00	0.00
10,200.0	90.15	89.00	7,365.6	-319.5	3,489.9	3,497.1	0.00	0.00	0.00



<b>Database:</b>	EDM	<b>Local Co-ordinate Reference:</b>	Well COT E P-30-29HN
<b>Company:</b>	Bayswater Exploration & Production, LLC	<b>TVD Reference:</b>	WELL @ 4946.0usft (Original Well Elev)
<b>Project:</b>	DJ Basin	<b>MD Reference:</b>	WELL @ 4946.0usft (Original Well Elev)
<b>Site:</b>	COT EAST Pad	<b>North Reference:</b>	True
<b>Well:</b>	COT E P-30-29HN	<b>Survey Calculation Method:</b>	Minimum Curvature
<b>Wellbore:</b>	Wellbore #1		
<b>Design:</b>	Design #1		

Planned Survey									
Measured Depth (usft)	Inclination (°)	Azimuth (°)	Vertical Depth (usft)	+N/-S (usft)	+E/-W (usft)	Vertical Section (usft)	Dogleg Rate (°/100usft)	Build Rate (°/100usft)	Turn Rate (°/100usft)
10,300.0	90.15	89.00	7,365.3	-317.8	3,589.9	3,597.0	0.00	0.00	0.00
10,400.0	90.15	89.00	7,365.0	-316.1	3,689.9	3,696.9	0.00	0.00	0.00
10,500.0	90.15	89.00	7,364.8	-314.3	3,789.9	3,796.9	0.00	0.00	0.00
10,600.0	90.15	89.00	7,364.5	-312.6	3,889.9	3,896.8	0.00	0.00	0.00
10,700.0	90.15	89.00	7,364.2	-310.8	3,989.8	3,996.7	0.00	0.00	0.00
10,800.0	90.15	89.00	7,364.0	-309.1	4,089.8	4,096.6	0.00	0.00	0.00
10,900.0	90.15	89.00	7,363.7	-307.4	4,189.8	4,196.5	0.00	0.00	0.00
11,000.0	90.15	89.00	7,363.5	-305.6	4,289.8	4,296.4	0.00	0.00	0.00
11,100.0	90.15	89.00	7,363.2	-303.9	4,389.8	4,396.3	0.00	0.00	0.00
11,200.0	90.15	89.00	7,362.9	-302.2	4,489.8	4,496.2	0.00	0.00	0.00
11,300.0	90.15	89.00	7,362.7	-300.4	4,589.7	4,596.1	0.00	0.00	0.00
11,400.0	90.15	89.00	7,362.4	-298.7	4,689.7	4,696.0	0.00	0.00	0.00
11,500.0	90.15	89.00	7,362.2	-296.9	4,789.7	4,795.9	0.00	0.00	0.00
11,600.0	90.15	89.00	7,361.9	-295.2	4,889.7	4,895.8	0.00	0.00	0.00
11,700.0	90.15	89.00	7,361.6	-293.5	4,989.7	4,995.7	0.00	0.00	0.00
11,800.0	90.15	89.00	7,361.4	-291.7	5,089.7	5,095.6	0.00	0.00	0.00
11,900.0	90.15	89.00	7,361.1	-290.0	5,189.7	5,195.5	0.00	0.00	0.00
12,000.0	90.15	89.00	7,360.8	-288.3	5,289.6	5,295.4	0.00	0.00	0.00
12,100.0	90.15	89.00	7,360.6	-286.5	5,389.6	5,395.3	0.00	0.00	0.00
12,200.0	90.15	89.00	7,360.3	-284.8	5,489.6	5,495.2	0.00	0.00	0.00
12,300.0	90.15	89.00	7,360.1	-283.0	5,589.6	5,595.1	0.00	0.00	0.00
12,400.0	90.15	89.00	7,359.8	-281.3	5,689.6	5,695.0	0.00	0.00	0.00
12,500.0	90.15	89.00	7,359.5	-279.6	5,789.6	5,794.9	0.00	0.00	0.00
12,600.0	90.15	89.00	7,359.3	-277.8	5,889.5	5,894.8	0.00	0.00	0.00
12,700.0	90.15	89.00	7,359.0	-276.1	5,989.5	5,994.7	0.00	0.00	0.00
12,800.0	90.15	89.00	7,358.8	-274.4	6,089.5	6,094.6	0.00	0.00	0.00
12,900.0	90.15	89.00	7,358.5	-272.6	6,189.5	6,194.5	0.00	0.00	0.00
13,000.0	90.15	89.00	7,358.2	-270.9	6,289.5	6,294.4	0.00	0.00	0.00
13,100.0	90.15	89.00	7,358.0	-269.1	6,389.5	6,394.3	0.00	0.00	0.00
13,200.0	90.15	89.00	7,357.7	-267.4	6,489.5	6,494.3	0.00	0.00	0.00
13,300.0	90.15	89.00	7,357.5	-265.7	6,589.4	6,594.2	0.00	0.00	0.00
13,400.0	90.15	89.00	7,357.2	-263.9	6,689.4	6,694.1	0.00	0.00	0.00
13,500.0	90.15	89.00	7,356.9	-262.2	6,789.4	6,794.0	0.00	0.00	0.00
13,600.0	90.15	89.00	7,356.7	-260.5	6,889.4	6,893.9	0.00	0.00	0.00
13,700.0	90.15	89.00	7,356.4	-258.7	6,989.4	6,993.8	0.00	0.00	0.00
13,800.0	90.15	89.00	7,356.1	-257.0	7,089.4	7,093.7	0.00	0.00	0.00
13,900.0	90.15	89.00	7,355.9	-255.2	7,189.3	7,193.6	0.00	0.00	0.00
14,000.0	90.15	89.00	7,355.6	-253.5	7,289.3	7,293.5	0.00	0.00	0.00
14,100.0	90.15	89.00	7,355.4	-251.8	7,389.3	7,393.4	0.00	0.00	0.00
14,200.0	90.15	89.00	7,355.1	-250.0	7,489.3	7,493.3	0.00	0.00	0.00
14,300.0	90.15	89.00	7,354.8	-248.3	7,589.3	7,593.2	0.00	0.00	0.00
14,400.0	90.15	89.00	7,354.6	-246.6	7,689.3	7,693.1	0.00	0.00	0.00
14,500.0	90.15	89.00	7,354.3	-244.8	7,789.3	7,793.0	0.00	0.00	0.00
14,600.0	90.15	89.00	7,354.1	-243.1	7,889.2	7,892.9	0.00	0.00	0.00
14,700.0	90.15	89.00	7,353.8	-241.3	7,989.2	7,992.8	0.00	0.00	0.00
14,800.0	90.15	89.00	7,353.5	-239.6	8,089.2	8,092.7	0.00	0.00	0.00
14,900.0	90.15	89.00	7,353.3	-237.9	8,189.2	8,192.6	0.00	0.00	0.00
15,000.0	90.15	89.00	7,353.0	-236.1	8,289.2	8,292.5	0.00	0.00	0.00
15,100.0	90.15	89.00	7,352.8	-234.4	8,389.2	8,392.4	0.00	0.00	0.00
15,200.0	90.15	89.00	7,352.5	-232.7	8,489.1	8,492.3	0.00	0.00	0.00
15,300.0	90.15	89.00	7,352.2	-230.9	8,589.1	8,592.2	0.00	0.00	0.00
15,387.3	90.15	89.00	7,352.0	-229.4	8,676.4	8,679.4	0.00	0.00	0.00
COT E P-30-29HN PBHL									



<b>Database:</b>	EDM	<b>Local Co-ordinate Reference:</b>	Well COT E P-30-29HN
<b>Company:</b>	Bayswater Exploration & Production, LLC	<b>TVD Reference:</b>	WELL @ 4946.0usft (Original Well Elev)
<b>Project:</b>	DJ Basin	<b>MD Reference:</b>	WELL @ 4946.0usft (Original Well Elev)
<b>Site:</b>	COT EAST Pad	<b>North Reference:</b>	True
<b>Well:</b>	COT E P-30-29HN	<b>Survey Calculation Method:</b>	Minimum Curvature
<b>Wellbore:</b>	Wellbore #1		
<b>Design:</b>	Design #1		

Design Targets									
Target Name									
- hit/miss target	Dip Angle	Dip Dir.	TVD	+N/-S	+E/-W	Northing	Easting	Latitude	Longitude
- Shape	(°)	(°)	(usft)	(usft)	(usft)	(usft)	(usft)		
COT E P-30-29HN PBH	0.00	0.00	7,352.0	-229.4	8,676.4	1,441,614.77	3,196,324.56	40° 32' 36.550 N	104° 47' 36.917 W
- plan hits target center									
- Point									
COT E P-30-29HN LP	0.00	0.00	7,372.0	-362.4	1,021.9	1,441,423.47	3,188,671.31	40° 32' 35.250 N	104° 49' 16.068 W
- plan hits target center									
- Point									