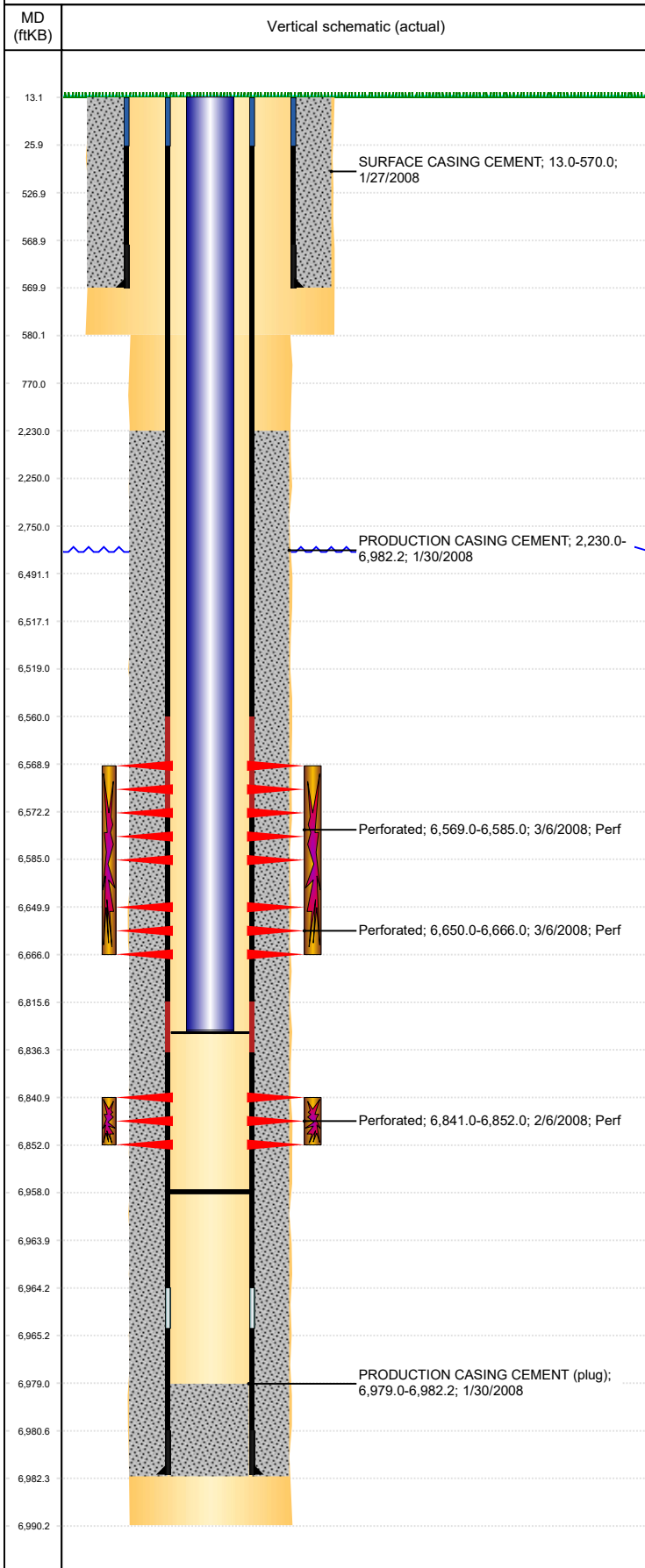


Well Name: RYANN STATE C16-22

VERTICAL, ORIGINAL HOLE, 9/25/2019 9:30:23 AM



Well Header									
API 05-123-25368		Business Unit DJ BASIN			District 15		Well Config VERTICAL		
KB - GL / MSL (ft... 13.00		Spud Date 1/27/2008		P & A Date		Well Production Status PR			SoRT No
Comment 318Ae LOCATION!									
Surface Location (Congressional)									
Qtr 3 SE	Qtr 4 NE	Section 16	Twtnshp 4	Twtnsh.... N	Range 64	Rng E/... W	Actual Latitude (°) 40.31252572	Actual Longitude (°) -104.55077500	
Wellbore Sections									
Section Des			Size (in)			Act Top, MD (ftKB)		Act Btm, MD (ftKB)	
SURFACE			12 1/4			13		580	
PRODUCTION			7 7/8			580		6,990	
Casing Strings									
Csg Des			Run Date		OD (in)	Wt/Len (lb/ft)	Grade	Top, MD (ftKB)	MD (ftKB)
Surface			1/27/2008		8 5/8	24.00	J-55	13.0	570.0
PRODUCTION			1/30/2008		4 1/2	11.60	M-80	13.0	6,982.2
Cement									
Des					Start Date		Top (ftKB)		Btm (ftKB)
SURFACE CASING CEMENT					1/27/2008		13.0		570.0
PRODUCTION CASING CEMENT					1/30/2008		2,230.0		6,982.2
Zone Statuses									
Zone Name		Status Date	Status	Fluid Type	Job			Prod Method	
NIOBRARA		3/7/2008	PR		DRILLING/COMPLETION - ORIGINAL, 1/27/2008...				
CODELL		3/7/2008	PR		DRILLING/COMPLETION - ORIGINAL, 1/27/2008...				
Perforation Data									
Linked Zone			Bnch/Stg	Entered Shot Total	Top (ftKB)		Btm (ftKB)		Date
NIOBRARA, ORIGINAL HOLE			A	64	6,569.00		6,585.00		3/6/2008
NIOBRARA, ORIGINAL HOLE			B	64	6,650.00		6,666.00		3/6/2008
CODELL, ORIGINAL HOLE				44	6,841.00		6,852.00		2/6/2008
Stimulation Intervals									
Zone					Start Date		Top (ftKB)		Btm (ftKB)
NIOBRARA, ORIGINAL HOLE					3/6/2008		6,569.0		6,666.0
CODELL, ORIGINAL HOLE					3/6/2008		6,841.0		6,852.0
Other In Hole									
Run Date		Des				OD (in)	Top (ftKB)		Btm (ftKB)
1/26/2018		Plunger Lift				1 7/8			
Logs									
Date		Type					Top, MD (ftKB)		Btm, MD (ftKB)
1/30/2008		Caliper/Comp.Density/Neutron/GR/SP/ML					2,600.0		6,959.0
1/30/2008		DIL/GR/SP/Caliper					570.0		6,979.0
2/5/2008		CBL/CCL/GR					2,090.0		6,949.0
Plug Back Total Depths									
Date		Type			Com				Depth (ftKB)
2/5/2008		PLUG			PUSHED REMAINDER OF CIFTPT TO 6,958". GIVES WELL 106'...				6,956.0
7/9/2008									6,958.0