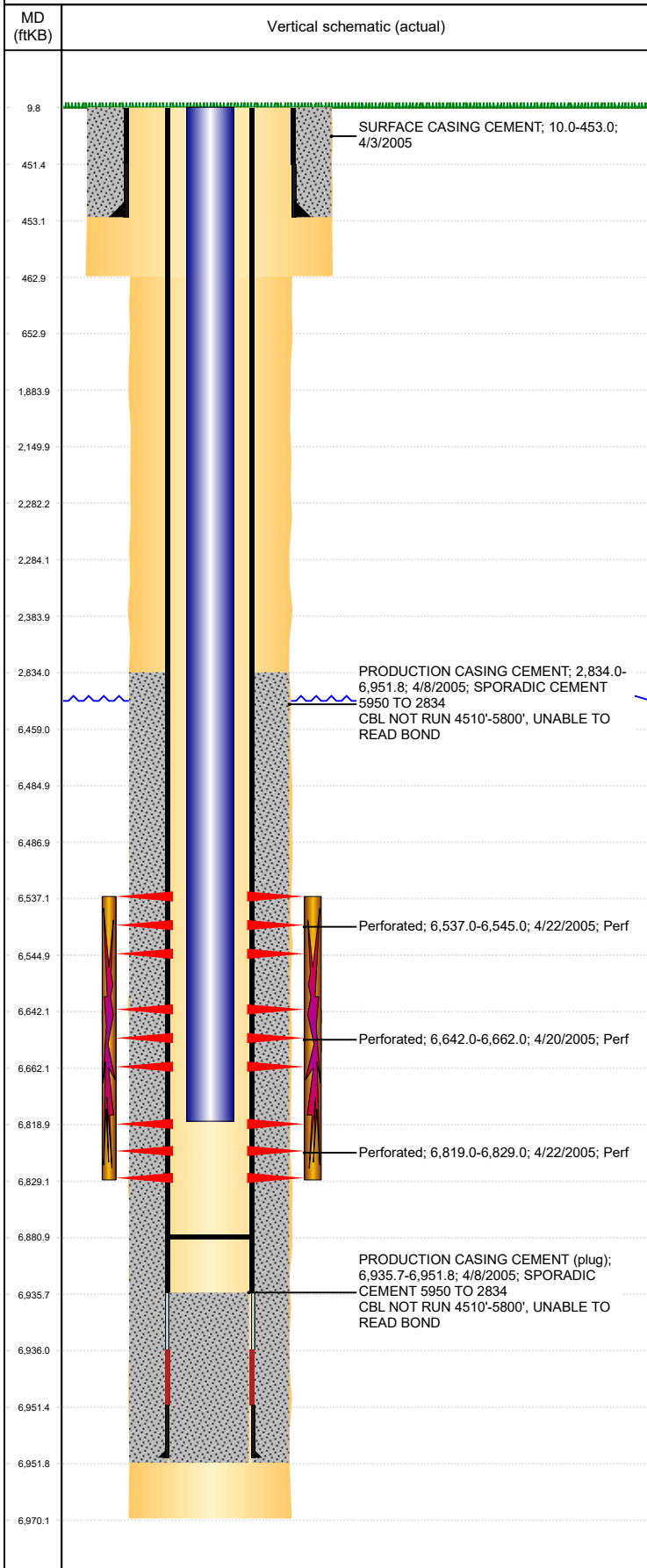


Well Name: FOSS 13-12

VERTICAL, ORIGINAL HOLE, 9/23/2019 3:52:21 PM



Well Header										
API 05-123-22780			Business Unit DJ BASIN			District 15		Well Config VERTICAL		
KB - GL / MSL (ft... 10.00		Spud Date 4/2/2005		P & A Date		Well Production Status PR			SoRT No	
Comment										
Surface Location (Congressional)										
Qtr 3 NW	Qtr 4 NE	Section 13	Twnshp 6	Twnsh... N	Range 64	Rng E/... W	Actual Latitude (°) 40.49175400		Actual Longitude (°) -104.49525200	
Wellbore Sections										
Section Des			Size (in)			Act Top, MD (ftKB)		Act Btm, MD (ftKB)		
SURFACE			12 1/4			10		463		
PRODUCTION			7 7/8			463		6,970		
Casing Strings										
Csg Des			Run Date		OD (in)	Wt/Len (lb/ft)	Grade	Top, MD (ftKB)	MD (ftKB)	
Surface			4/3/2005		8 5/8	24.00		10.0	453.0	
Production			4/8/2005		4 1/2	11.60	I-80	10.0	6,951.8	
Cement										
Des					Start Date		Top (ftKB)		Btm (ftKB)	
SURFACE CASING CEMENT					4/3/2005		10.0		453.0	
PRODUCTION CASING CEMENT					4/8/2005		2,834.0		6,951.8	
Zone Statuses										
Zone Name		Status Date	Status	Fluid Type	Job				Prod Method	
CODELL		5/3/2005	PR		DRILLING/COMPLETION - ORIGINAL, 4/2/2005...					
CODELL		3/17/2015	SI		HORIZONTAL WELL PREP, 3/13/2015 06:00					
NIOBRARA		5/3/2005	PR		DRILLING/COMPLETION - ORIGINAL, 4/2/2005...					
NIOBRARA		3/17/2015	SI		HORIZONTAL WELL PREP, 3/13/2015 06:00					
Perforation Data										
Linked Zone			Bnch/Stg	Entered Shot Total	Top (ftKB)		Btm (ftKB)		Date	
NIOBRARA, ORIGINAL HOLE			A	40	6,537.00		6,545.00		4/22/2005	
NIOBRARA, ORIGINAL HOLE			B	80	6,642.00		6,662.00		4/20/2005	
CODELL, ORIGINAL HOLE				40	6,819.00		6,829.00		4/22/2005	
Stimulation Intervals										
Zone					Start Date		Top (ftKB)		Btm (ftKB)	
NIOBRARA-CODELL, ORIGINAL HOLE					4/22/2005		6,537.0		6,829.0	
NIOBRARA, ORIGINAL HOLE					4/20/2005		6,642.0		6,662.0	
Other In Hole										
Run Date		Des				OD (in)	Top (ftKB)		Btm (ftKB)	
5/30/2012		Plunger Lift				1.9				
1/30/2014		Plunger Lift				1 7/8				
Logs										
Date		Type					Top, MD (ftKB)		Btm, MD (ftKB)	
4/7/2005		COMPENSATED DENSITY					3,450.0		6,944.0	
4/7/2005		INDUCTION					454.0		6,964.0	
4/13/2005		CBL/CCL/GR					2,700.0		6,892.0	
1/2/2014		GYRO					0.0		6,700.0	
Plug Back Total Depths										
Date		Type			Com				Depth (ftKB)	
10/26/2005		FILL			CLEAN OUT TO LAND TUBING				6,929.0	
3/13/2015		FILL							6,881.0	