

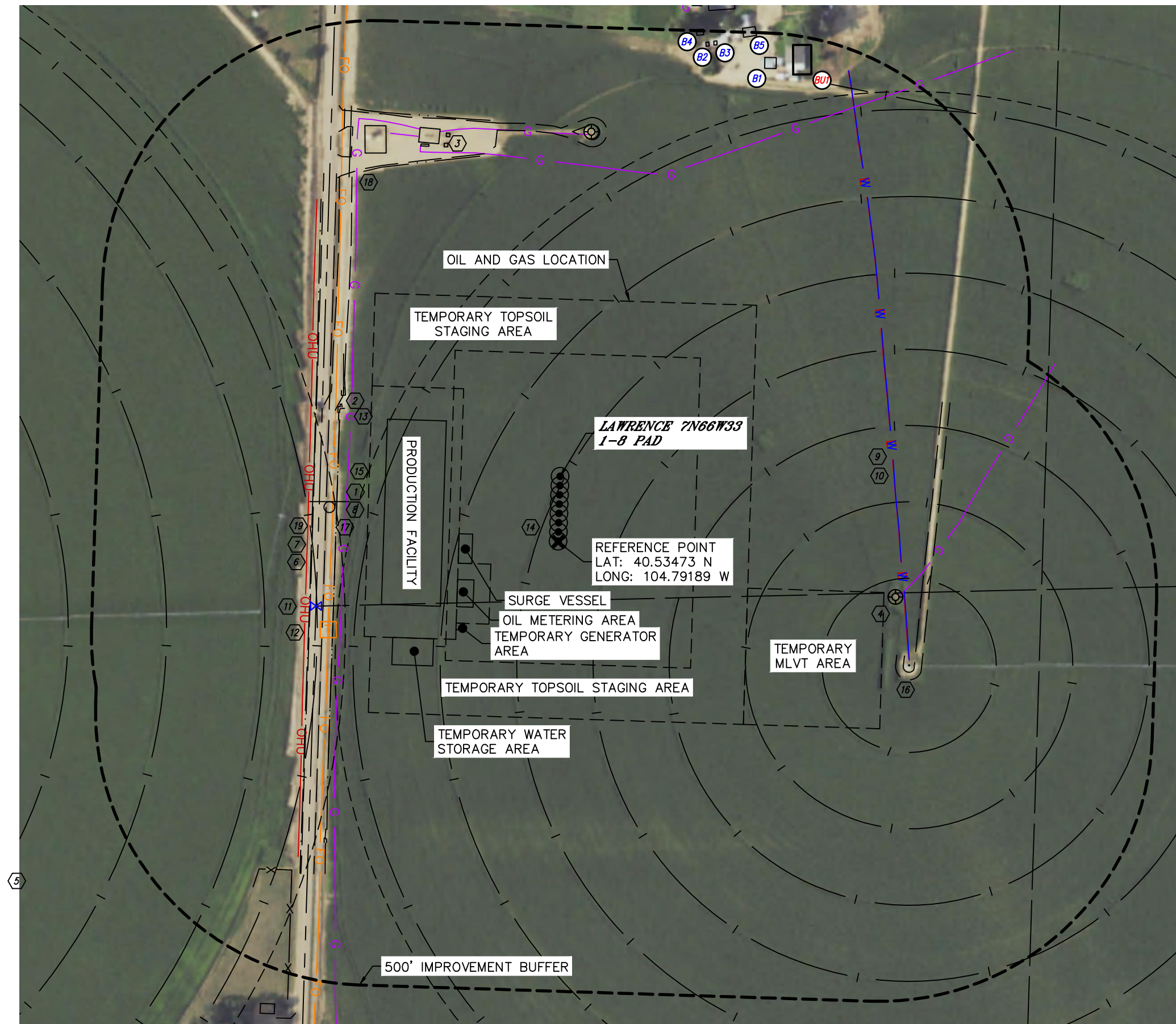


Lat40°, Inc. 6250 W. 10th Street, Unit 2, Greeley, CO 970-515-5294

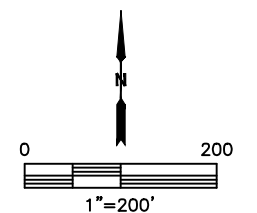
LOCATION DRAWING

LAWRENCE 7N66W33 1-8 PAD

SECTION: 33
TOWNSHIP: 7N
RANGE: 66W
6TH. P.M.
WELD COUNTY, CO



LEGEND
X - REFERENCE POINT
ALL DISTANCES ARE APPROXIMATE.





Lat40°, Inc. 6250 W. 10th Street, Unit 2, Greeley, CO 970-515-5294

LOCATION DRAWING

LAWRENCE 7N66W33 1-8 PAD

SECTION: 33
TOWNSHIP: 7N
RANGE: 66W
6TH. P.M.
WELD COUNTY, CO

IMPROVEMENTS:
(MEASURED FROM THE PROPOSED REFERENCE POINT LOCATION)

- 801

 BUILDING UNIT B1 959' NE
- 81

 BUILDING B1 947' NE, B2 948' NE, B3 955' NE, B4 963' NE, B2 986' NE
- 1

 PUBLIC ROAD 427' W
- 2

 EDGE OF ROAD/ GRAVEL 474' & 724' NW, 655' SE, 923' S, 989' SW
- 3

 EXISTING PRODUCTION EQUIPMENT 752', 762', 763', 769' & 779' NW (PDC)
- 4

 EXISTING WELL HEAD 627' SE, 754' NE
- 5

 FENCE 775' SW
- 6

 ABOVE GROUND UTILITY 459' W
- 7

 FIBER OPTIC LINE LOCATES ±415' W
- 8

 GAS LINE LOCATES ±392' W, ±636' SE (PDC), ±695' NE (DCP)
- 9

 ELECTRIC LINE LOCATES ±624' NE
- 10

 WATER LINE LOCATES ±624' NE
- 11

 WATER VALVE 459' SW
- 12

 TELEPHONE PEDESTAL 451' SW
- 13

 EXISTING PIPE 461', 771', 849' & 851' NW, 677' SW
- 14

 IRRIGATION PIVOT TRACK 37', 178' & 337' NW, 103', 242', 382' & 522' SE, 449', 545', 725' & 905' SW
- 15

 IRRIGATION END GUN 370' NW, 397' SW
- 16

 IRRIGATION CENTER PIVOT 682' SE
- 17

 CONCRETE DITCH 408' W, 466' & 474' NW
- 18

 DITCH 767', 783' & 805' NW
- 19

 BARROW DITCH 452' W

