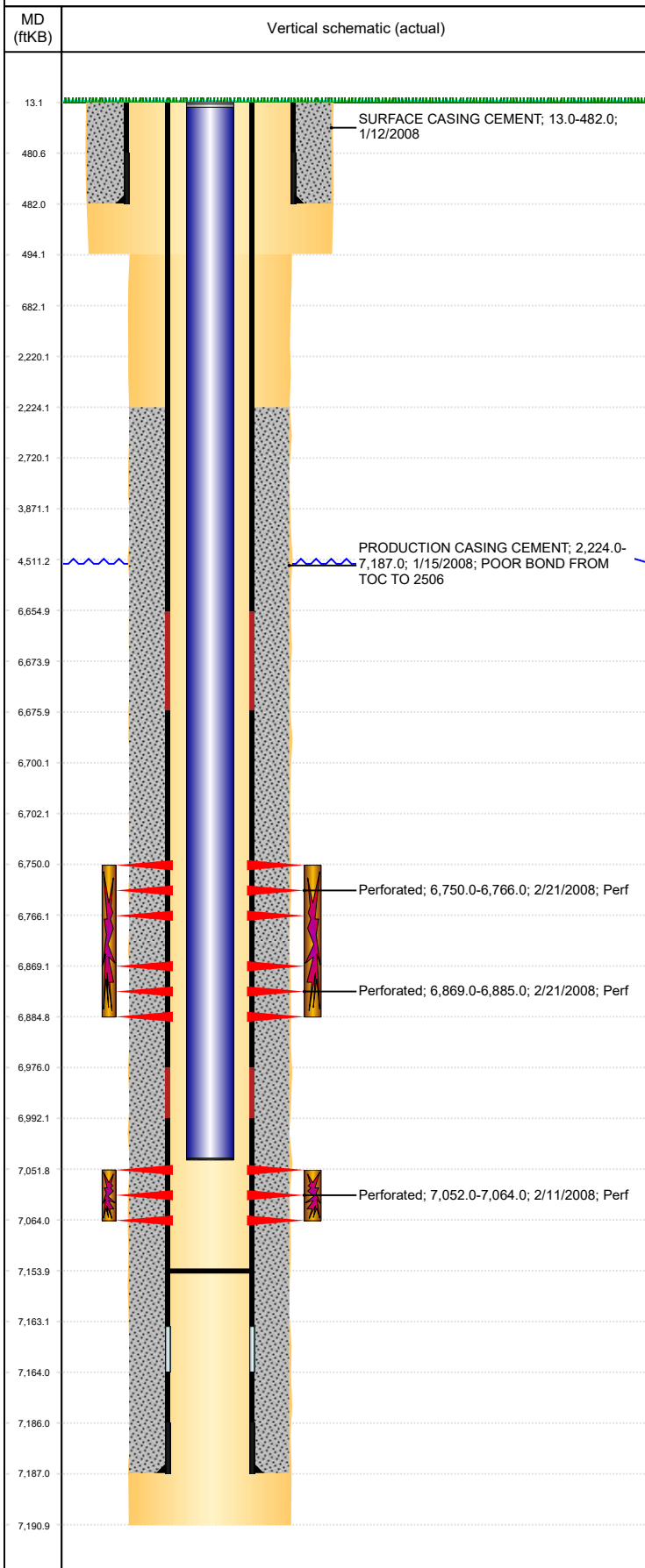


Well Name: ALEXANDER F33-24

VERTICAL, ORIGINAL HOLE, 9/18/2019 10:43:41 AM



Well Header									
API 05-123-25301		Business Unit DJ BASIN			District 15		Well Config VERTICAL		
KB - GL / MSL (ft... 13.00		Spud Date 1/11/2008		P & A Date		Well Production Status SI			SoRT No
Comment LIMITED DOCUMENTATION IN FILE TO VERIFY STIM DETAILS, ADDED WHAT INFO WAS THERE AND DIDN'T CHANGE ANYTHING THAT WAS PUT IN LIVE. NO OPEN HOLE LOGS.									
Surface Location (Congressional)									
Qtr 3 NW	Qtr 4 SE	Section 33	Twnshp 5	Twnsh... N	Range 65	Rng E/... W	Actual Latitude (°) 40.35256720		Actual Longitude (°) -104.66795594
Wellbore Sections									
Section Des			Size (in)			Act Top, MD (ftKB)		Act Btm, MD (ftKB)	
SURFACE			12 1/4			13		494	
PRODUCTION			7 7/8			494		7,191	
Casing Strings									
Csg Des			Run Date		OD (in)	Wt/Len (lb/ft)	Grade	Top, MD (ftKB)	MD (ftKB)
Surface			1/11/2008		8 5/8	24.00	J-55	13.0	482.0
PRODUCTION			1/15/2008		4 1/2	11.60	M-80	13.0	7,187.0
Cement									
Des					Start Date		Top (ftKB)		Btm (ftKB)
SURFACE CASING CEMENT					1/12/2008		13.0		482.0
PRODUCTION CASING CEMENT					1/15/2008		2,224.0		7,187.0
Zone Statuses									
Zone Name		Status Date	Status	Fluid Type	Job			Prod Method	
NIOBRARA		3/6/2008	PR		DRILLING/COMPLETION - ORIGINAL, 1/11/2008...				
CODELL		3/6/2008	PR		DRILLING/COMPLETION - ORIGINAL, 1/11/2008...				
Perforation Data									
Linked Zone			Bnch/Stg	Entered Shot Total	Top (ftKB)		Btm (ftKB)		Date
NIOBRARA, ORIGINAL HOLE			A	64	6,750.00		6,766.00		2/21/2008
NIOBRARA, ORIGINAL HOLE			B	64	6,869.00		6,885.00		2/21/2008
CODELL, ORIGINAL HOLE				48	7,052.00		7,064.00		2/11/2008
Stimulation Intervals									
Zone					Start Date		Top (ftKB)		Btm (ftKB)
NIOBRARA, ORIGINAL HOLE					2/21/2008		6,750.0		6,885.0
CODELL, ORIGINAL HOLE					2/21/2008		7,052.0		7,064.0
Other In Hole									
Run Date		Des				OD (in)	Top (ftKB)		Btm (ftKB)
Logs									
Date		Type					Top, MD (ftKB)		Btm, MD (ftKB)
1/24/2008		CBL/CCL/GR					13.0		7,138.0
1/29/2008		PULSED NEUTRON					482.0		7,135.0
Plug Back Total Depths									
Date		Type			Com				Depth (ftKB)
1/24/2008		FILL			DEPTH LOGGER ON CBL				7,139.0
7/18/2008		FILL			C/O FILL TO PLUG, DRILL UP PLUG, CHASE PLUG TO FILL				7,154.0