



September 10, 2019

Mr. Jeff Robbins, Director
Colorado Oil and Gas Conservation Commission
The Chancery Building
1120 Lincoln Street, Suite 801
Denver, CO 80203

RE: Siebring 63-32-0801BS
Township 5 North, Range 63 West, 6" P.M.
Section 32: N/2 N/2
Weld County, Colorado

Proposed Wellbore Unit (Containing 160 Acres, more or less):

Dear Mr. Jeff Robbins:

HighPoint is planning to drill the captioned boundary well in accordance with the provisions of COGCC 318A.e.

HighPoint's wellbore spacing unit consists of Section 32: N/2 N/2, creating the above referenced spacing unit in which we will target the Niobrara formation. I certify that all of the owners within the proposed wellbore spacing unit were noticed and no objections were received.

Enclosed is a copy of the following document to assist you in your review and approval of HighPoint's proposed changes for the captioned well.

- Plat illustrating the proposed wellbore spacing unit on existing location plat

Thank you for your attention to the enclosed. HighPoint's respectfully requests that the COGCC review the enclosed information and approve the proposed changes for the captioned well.

If you have any questions, please contact me at 303-312-8188.

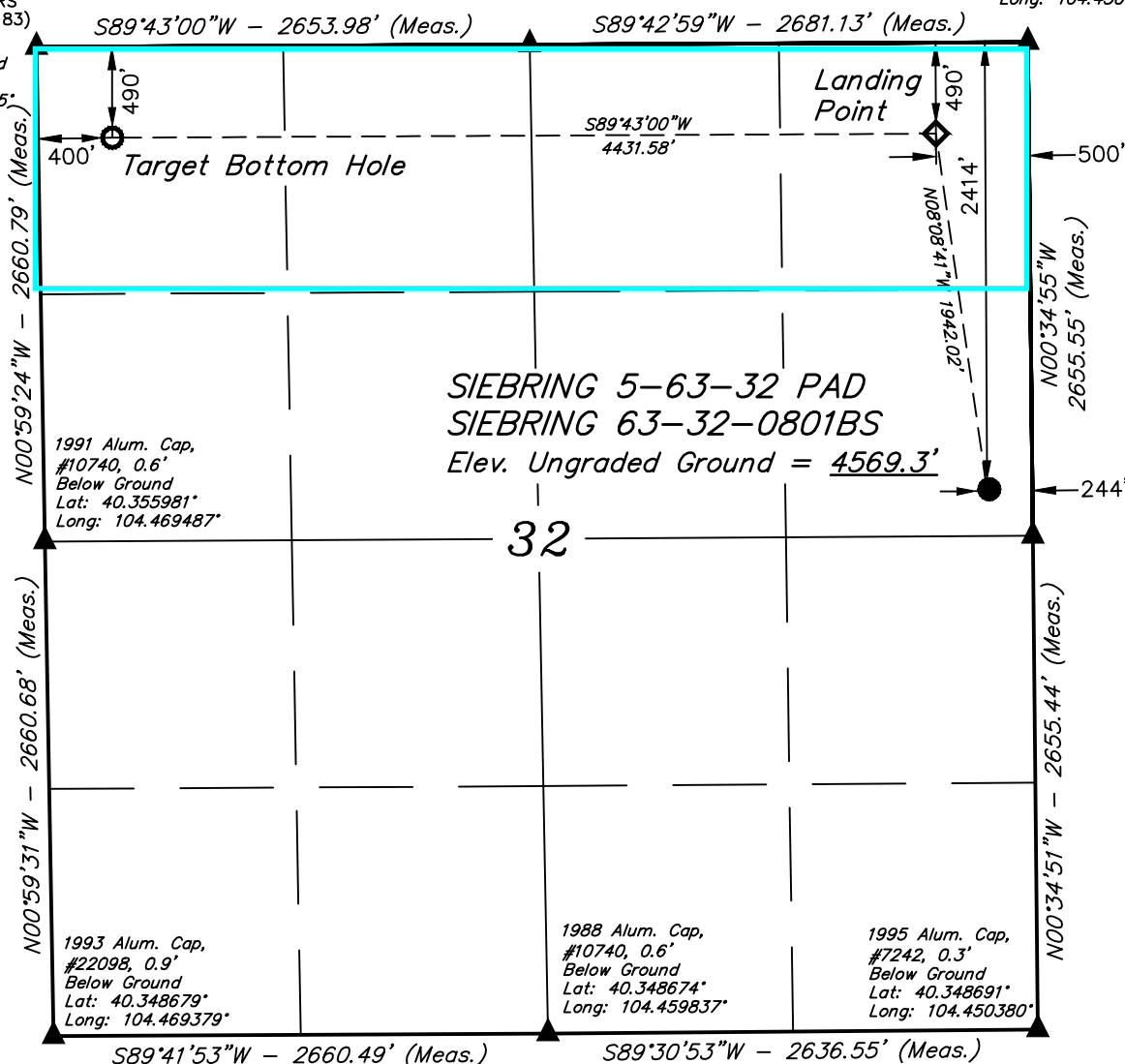
HIGHPOINT OPERATING CORPORATION

A handwritten signature in blue ink that reads "Matt Barber".

Matt Barber
Regulatory

T5N, R63W, 6th P.M.

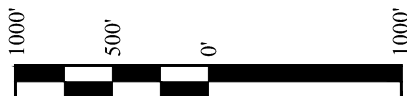
- 1996 Alum. Cap,
#7242, 0.9'
Below Ground
Lat: 40.363265°
Long: 104.450455°



CERTIFICATE

THIS IS TO CERTIFY THAT THE ABOVE DATA WAS PREPARED FROM FIELD NOTES OF ACTUAL SURVEYS MADE BY ME OR UNDER MY SUPERVISION AND THAT THE SAME ARE TRUE AND CORRECT TO THE BEST OF MY KNOWLEDGE AND BELIEF.

PDOP = 1.4



NAD 83 (SURFACE LOCATION)	NAD 83 (LANDING POINT)	NAD 83 (TARGET BOTTOM HOLE)
LATITUDE = 40°21'23.91" (40.356642°)	LATITUDE = 40°21'42.92" (40.361922°)	LATITUDE = 40°21'42.97" (40.361936°)
LONGITUDE = 104°27'04.67" (104.451298°)	LONGITUDE = 104°27'08.07" (104.452242°)	LONGITUDE = 104°28'05.30" (104.468140°)
NAD 27 (SURFACE LOCATION)	NAD 27 (LANDING POINT)	NAD 27 (TARGET BOTTOM HOLE)
LATITUDE = 40°21'23.98" (40.356661°)	LATITUDE = 40°21'42.99" (40.361941°)	LATITUDE = 40°21'43.04" (40.361955°)
LONGITUDE = 104°27'02.83" (104.450787°)	LONGITUDE = 104°27'06.23" (104.451731°)	LONGITUDE = 104°28'03.46" (104.467629°)
STATE PLANE NAD 83 (CO. NORTH)	STATE PLANE NAD 83 (CO. NORTH)	STATE PLANE NAD 83 (CO. NORTH)
N: 1374493.39' E: 3292254.43'	N: 1376413.68' E: 3291968.57'	N: 1376366.84' E: 3287538.55'
STATE PLANE NAD 27 (CO. NORTH)	STATE PLANE NAD 27 (CO. NORTH)	STATE PLANE NAD 27 (CO. NORTH)
N: 374495.30' E: 2292404.42'	N: 376415.55' E: 2292118.54'	N: 376368.71' E: 2287688.52'

REGISTERED LAND SURVEYOR
REGISTRATION NO. 28285
STATE OF COLORADO

REV: 1 03-20-19 J.U.
(UPDATE PAD NAME)

BASIS OF BEARINGS
TRANSVERSE MERCATOR PROJECTION WITH
A CENTRAL MERIDIAN OF $W105^{\circ}00'00''$.

BASIS OF ELEVATION
OPUS SOLUTION GENERATED NAVD 88



UELS, LLC
Corporate Office * 85 South 200 East
Vernal, UT 84078 * (435) 789-1017



HIGHPOINT OPERATING CORPORATION

SIEBRING 5-32-32 PAD
SIEBRING 63-32-0801BS
SE 1/4 NE 1/4, SECTION 32, T5N, R63W, 6th P.M.
WELD COUNTY, COLORADO

SURVEYED BY	RYAN WILLIAMS, D.E.	02-26-19	SCALE
DRAWN BY	J.U.	03-01-19	1" = 1000'

WELL LOCATION PLAT