

Current Wellbore Diagram

Lease & Well No.	Benner #1
Field Name	Wattenberg
Location	Lat 40.7338711 Long -104.0664045, NWSW Sec. 23-9N-60W
K.B. Elevation	
D.F. Elevation	
Ground Level	4,666'

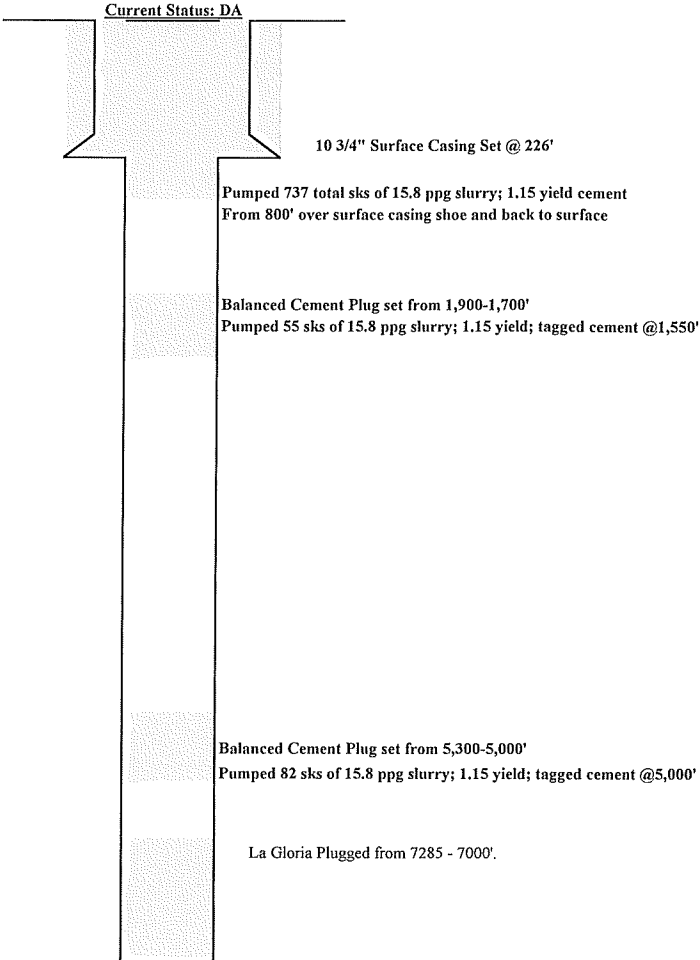
Operator	Verdad Resources LLC
County & State	Weld County, Colorado
API No.	05-123-05631

Cut casing 4' below GL & welded on cap/plate with the well name and API #

Surface Casing					
Hole Size	13 3/8"	Csg Wt	32.3#	Depth	226'
Csg Size	10 3/4"	Sx. Cmt.	140 sx	TOC @	Surface
Intermediate Casing					
Size (OD)	n/a	Weight		Depth	
Grade		Sx. Cmt.		TOC @	
Production Casing					
Hole Size		Weight		Depth	
Csg Size		Stg 1 Sx. Cmt.		TOC @	
DV Tool		Stg 2 Sx. Cmt.		TOC @	

Well History  
10/11/52 - Spud well  
10/29/1952 - Complete well  
5/18/2019 - Plugged & abandoned well

Tubing Detail:  
3.5 EUE Workstring



Formation Record	Depth
B/ Fox Hills	400' Est
Sussex	
Niobrara	6,484'
Niobrara 'B'	
Niobrara 'C'	
Ft Hays	
Codell	
J-Sand	7,000'

Plug Back Depth	See Above
Total Depth	7,315'