



SRC Energy

Rev 0

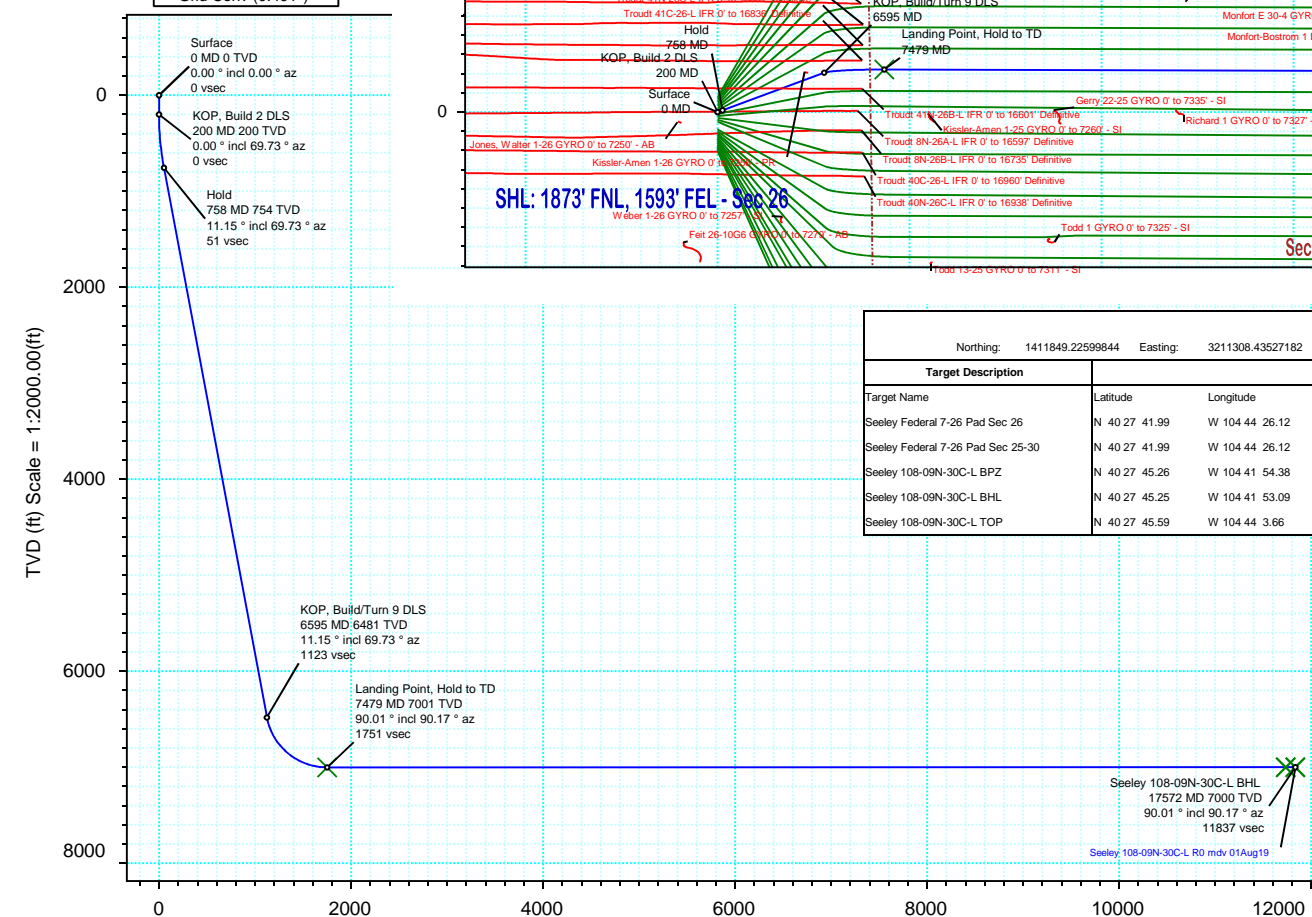
Schlumberger

Borehole: Original Hole		Well: Seeley 108-09N-30C-L	Field: CO, Weld County (NAD 83 NZ) - SRC	Structure: SRC Energy 26-06N-66W (Chalk-Seeley Federal 7-26 Pad DSU 108)
Gravity & Magnetic Parameters		Surface Location NAD83 Colorado State Plane, Northern Zone, US Feet		Miscellaneous
Model: HDGM 2019	Dip: 66.847°	Date: 31-Jul-2019	Lat: N 40 27 41.20	Slot: Seeley 108-09N-30C-L
MagDec: 8.055°	FS: 52216.34nT	Gravity FS: 999.049mgN (9.80665 Based)	North: 1411849.23ftUS	TVD Ref: KB 4ft(4701ft above MSL)
			Lon: W 104 44 26.13	Plan: Seeley 108-09N-30C-L R0 mdy 01Aug19
			Easting: 3211308.44ftUS	
			Scale Fact: 0.99996359	

Proposal



True North
Tot Cor (M->T 8.055°)
Mag Dec (8.055°)
Grid Conv (0.491°)



Vertical Section (ft) Azim = 88.00° Scale = 1:2000.00(ft) Origin = 0N/-S, 0E/-W

Surface Location									
Northing: 1411849.22599844		Easting: 3211308.43527182		Latitude: N 40 27 41.20		Longitude: W 104 44 26.13		VSec Azimuth: 88.00	
Target Description		Grid Coord						Local Coord	
Target Name		Latitude	Longitude	Northing	Easting	TVD	VSec	N(+)S(-)	E(+)W(-)
Seeley Federal 7-26 Pad Sec 26		N 40 27 41.99	W 104 44 26.12	1411929.38	3211308.58	4701.00	3.63	80.15	0.83
Seeley Federal 7-26 Pad Sec 25-30		N 40 27 41.99	W 104 44 26.12	1411929.38	3211308.58	4701.00	3.63	80.15	0.83
Seeley 108-09N-30C-L BPZ		N 40 27 45.26	W 104 41 54.38	1412363.01	3223033.68	7000.00	11736.94	413.37	11729.66
Seeley 108-09N-30C-L BHL		N 40 27 45.25	W 104 41 53.09	1412363.55	3223133.57	7000.00	11836.77	413.06	11829.56
Seeley 108-09N-30C-L TOP		N 40 27 45.59	W 104 44 3.66	1412308.41	3213041.37	7001.00	1751.31	444.34	1736.87

Critical Points							
Critical Point	MD	INCL	AZIM	TVD	VSEC	N(+)/S(-)	E(+)/W(-)
Surface	0.00	0.00	0.00	0.00	0.00	0.00	0.00
KOP, Build 2 DLS	200.00	0.00	69.73	200.00	0.00	0.00	0.00
Hold	757.62	11.15	69.73	754.11	51.37	18.74	50.75
KOP, Build/Turn 9 DLS	6594.79	11.15	69.73	6481.05	1123.48	409.87	1109.86
Landing Point, Hold to TD	7478.84	90.01	90.17	7001.06	1750.53	443.78	1736.10
Seeley 108-09N-30C-L BHL	17572.34	90.01	90.17	7000.00	11836.77	413.06	11829.56



Seeley 108-09N-30C-L R0 mdv 01Aug19 Proposal Geodetic Report

(Def Plan)

Report Date: August 27, 2019 - 09:13 AM
Client: SRC Energy
Field: CO, Weld County (NAD 83 NZ) - SRC
Structure / Slot: SRC Energy 26-06N-66W (Chalk-Seeley Federal 7-26 Pad DSU 108) / Seeley 108-09N-30C-L
Well: Seeley 108-09N-30C-L
Borehole: Original Hole
UWI / API#: Unknown / 05-123-48892
Survey Name: Seeley 108-09N-30C-L R0 mdv 01Aug19
Survey Date: July 18, 2019
Tort / AHD / DDI / ERD Ratio: 90.717 ° / 11904.860 ft / 6.433 / 1.700
Coordinate Reference System: NAD83 Colorado State Plane, Northern Zone, US Feet
Location Lat / Long: N 40° 27' 41.19840", W 104° 44' 26.13480"
Location Grid N/E Y/X: N 1411849.226 ftUS, E 3211308.435 ftUS
CRS Grid Convergence Angle: 0.4907 °
Grid Scale Factor: 0.99996359
Version / Patch: 2.10.760.0

Survey / DLS Computation: Minimum Curvature / Lubinski
Vertical Section Azimuth: 88.000 ° (True North)
Vertical Section Origin: 0.000 ft, 0.000 ft
TVD Reference Datum: KB 4ft
TVD Reference Elevation: 4701.000 ft above MSL
Seabed / Ground Elevation: 4697.000 ft above MSL
Magnetic Declination: 8.055 °
Total Gravity Field Strength: 999.0491mgn (9.80665 Based)
Gravity Model: GARM
Total Magnetic Field Strength: 52216.340 nT
Magnetic Dip Angle: 66.847 °
Declination Date: July 31, 2019
Magnetic Declination Model: HDGM 2019
North Reference: True North
Grid Convergence Used: 0.0000 °
Total Corr Mag North->True North: 8.0552 °
Local Coord Referenced To: Well Head

Comments	MD (ft)	Incl (°)	Azim True (°)	TVD (ft)	VSEC (ft)	NS (ft)	EW (ft)	DLS (°/100ft)	Northing (ftUS)	Easting (ftUS)	Latitude (°)	Longitude (°)
Surface	0.00	0.00	0.00	0.00	0.00	0.00	0.00	N/A	1411849.23	3211308.44	40.461444	-104.740593
KOP, Build 2 DLS	100.00	0.00	69.73	100.00	0.00	0.00	0.00	0.00	1411849.23	3211308.44	40.461444	-104.740593
	200.00	0.00	69.73	200.00	0.00	0.00	0.00	0.00	1411849.23	3211308.44	40.461444	-104.740593
	300.00	2.00	69.73	299.98	1.66	0.60	1.64	2.00	1411849.84	3211310.07	40.461446	-104.740587
Hold	400.00	4.00	69.73	399.84	6.63	2.42	6.55	2.00	1411851.70	3211314.96	40.461451	-104.740569
	500.00	6.00	69.73	499.45	14.90	5.44	14.72	2.00	1411854.79	3211323.11	40.461459	-104.740540
	600.00	8.00	69.73	598.70	26.47	9.66	26.15	2.00	1411859.11	3211334.50	40.461471	-104.740499
	700.00	10.00	69.73	697.47	41.33	15.08	40.83	2.00	1411864.65	3211349.13	40.461485	-104.740446
	757.62	11.15	69.73	754.11	51.37	18.74	50.75	2.00	1411868.40	3211359.02	40.461495	-104.740411
	800.00	11.15	69.73	795.69	59.16	21.58	58.44	0.00	1411871.31	3211366.68	40.461503	-104.740383
	900.00	11.15	69.73	893.80	77.52	28.28	76.58	0.00	1411878.16	3211384.77	40.461522	-104.740318
	1000.00	11.15	69.73	991.91	95.89	34.98	94.73	0.00	1411885.02	3211402.85	40.461540	-104.740253
	1100.00	11.15	69.73	1090.02	114.26	41.68	112.87	0.00	1411891.87	3211420.94	40.461558	-104.740187
	1200.00	11.15	69.73	1188.13	132.62	48.38	131.01	0.00	1411898.73	3211439.03	40.461577	-104.740122
	1300.00	11.15	69.73	1286.24	150.99	55.08	149.16	0.00	1411905.58	3211457.11	40.461595	-104.740057
	1400.00	11.15	69.73	1384.35	169.36	61.79	167.30	0.00	1411912.44	3211475.20	40.461614	-104.739992
	1500.00	11.15	69.73	1482.47	187.72	68.49	185.45	0.00	1411919.30	3211493.28	40.461632	-104.739927
	1600.00	11.15	69.73	1580.58	206.09	75.19	203.59	0.00	1411926.15	3211511.37	40.461650	-104.739861
	1700.00	11.15	69.73	1678.69	224.46	81.89	221.74	0.00	1411933.01	3211529.45	40.461669	-104.739796
	1800.00	11.15	69.73	1776.80	242.82	88.59	239.88	0.00	1411939.86	3211547.54	40.461687	-104.739731
	1900.00	11.15	69.73	1874.91	261.19	95.29	258.02	0.00	1411946.72	3211565.62	40.461706	-104.739666
	2000.00	11.15	69.73	1973.02	279.56	101.99	276.17	0.00	1411953.57	3211583.71	40.461724	-104.739601
	2100.00	11.15	69.73	2071.14	297.93	108.69	294.31	0.00	1411960.43	3211601.79	40.461742	-104.739535
	2200.00	11.15	69.73	2169.25	316.29	115.39	312.46	0.00	1411967.28	3211619.88	40.461761	-104.739470
	2300.00	11.15	69.73	2267.36	334.66	122.09	330.60	0.00	1411974.14	3211637.97	40.461779	-104.739405
	2400.00	11.15	69.73	2365.47	353.03	128.79	348.74	0.00	1411981.00	3211656.05	40.461798	-104.739340
	2500.00	11.15	69.73	2463.58	371.39	135.49	366.89	0.00	1411987.85	3211674.14	40.461816	-104.739275
	2600.00	11.15	69.73	2561.69	389.76	142.19	385.03	0.00	1411994.71	3211692.22	40.461834	-104.739209
	2700.00	11.15	69.73	2659.81	408.13	148.89	403.18	0.00	1412001.56	3211710.31	40.461853	-104.739144
	2800.00	11.15	69.73	2757.92	426.49	155.60	421.32	0.00	1412008.42	3211728.39	40.461871	-104.739079
	2900.00	11.15	69.73	2856.03	444.86	162.30	439.47	0.00	1412015.27	3211746.48	40.461889	-104.739014
	3000.00	11.15	69.73	2954.14	463.23	169.00	457.61	0.00	1412022.13	3211764.56	40.461908	-104.738948
	3100.00	11.15	69.73	3052.25	481.60	175.70	475.75	0.00	1412028.98	3211782.65	40.461926	-104.738883
	3200.00	11.15	69.73	3150.36	499.96	182.40	493.90	0.00	1412035.84	3211800.73	40.461945	-104.738818
	3300.00	11.15	69.73	3248.48	518.33	189.10	512.04	0.00	1412042.70	3211818.82	40.461963	-104.738753
	3400.00	11.15	69.73	3346.59	536.70	195.80	530.19	0.00	1412049.55	3211836.91	40.461981	-104.738688
	3500.00	11.15	69.73	3444.70	555.06	202.50	548.33	0.00	1412056.41	3211854.99	40.462000	-104.738622
	3600.00	11.15	69.73	3542.81	573.43	209.20	566.47	0.00	1412063.26	3211873.08	40.462018	-104.738557
	3700.00	11.15	69.73	3640.92	591.80	215.90	584.62	0.00	1412070.12	3211891.16	40.462037	-104.738492
	3800.00	11.15	69.73	3739.03	610.16	222.60	602.76	0.00	1412076.97	3211909.25	40.462055	-104.738427
3900.00	11.15	69.73	3837.15	628.53	229.30	620.91	0.00	1412083.83	3211927.33	40.462073	-104.738362	
4000.00	11.15	69.73	3935.26	646.90	236.00	639.05	0.00	1412090.68	3211945.42	40.462092	-104.738296	
4100.00	11.15	69.73	4033.37	665.26	242.70	657.20	0.00	1412097.54	3211963.50	40.462110	-104.738231	
4200.00	11.15	69.73	4131.48	683.63	249.41	675.34	0.00	1412104.40	3211981.59	40.462129	-104.738166	
4300.00	11.15	69.73	4229.59	702.00	256.11	693.48	0.00	1412111.25	3211999.67	40.462147	-104.738101	
4400.00	11.15	69.73	4327.70	720.37	262.81	711.63	0.00	1412118.11	3212017.76	40.462165	-104.738036	
4500.00	11.15	69.73	4425.82	738.73	269.51	729.77	0.00	1412124.96	3212035.85	40.462184	-104.737970	
4600.00	11.15	69.73	4523.93	757.10	276.21	747.92	0.00	1412131.82	3212053.93	40.462202	-104.737905	
4700.00	11.15	69.73	4622.04	775.47	282.91	766.06	0.00	1412138.67	3212072.02	40.462221	-104.737840	
4800.00	11.15	69.73	4720.15	793.83	289.61	784.21	0.00	1412145.53	3212090.10	40.462239	-104.737775	
4900.00	11.15	69.73	4818.26	812.20	296.31	802.35	0.00	1412152.38	3212108.19	40.462257	-104.737710	
5000.00	11.15	69.73	4916.37	830.57	303.01	820.49	0.00	1412159.24	3212126.27	40.462276	-104.737644	
5100.00	11.15	69.73	5014.48	848.93	309.71	838.64	0.00	1412166.10	3212144.36	40.462294	-104.737579	
5200.00	11.15	69.73	5112.60	867.30	316.41	856.78	0.00	1412172.95	3212162.44	40.462312	-104.737514	
5300.00	11.15	69.73	5210.71	885.67	323.11	874.93	0.00	1412179.81	3212180.53	40.462331	-104.737449	
5400.00	11.15	69.73	5308.82	904.04	329.81	893.07	0.00	1412186.66	3212198.61	40.462349	-104.737384	
5500.00	11.15	69.73	5406.93	922.40	336.51	911.21	0.00	1412193.52	3212216.70	40.462368	-104.737318	
5600.00	11.15	69.73	5505.04	940.77	343.21	929.36	0.00	1412200.37	3212234.78	40.462386	-104.737253	
5700.00	11.15	69.73	5603.15	959.14	349.92	947.50	0.00	1412207.23	3212252.87	40.462404	-104.737188	
5800.00	11.15	69.73	5701.27	977.50	356.62	965.65	0.00	1412214.08	3212270.96	40.462423	-104.737123	
5900.00	11.15	69.73	5799.38	995.87	363.32	983.79	0.00	1412220.94	3212289.04	40.462441	-104.737058	
6000.00	11.15	69.73	5897.49	1014.24	370.02	1001.94	0.00	1412227.80	3212307.13	40.462460	-104.736992	
6100.00	11.15	69.73	5995.60	1032.60	376.72	1020.08	0.00	1412234.65	3212325.21	40.462478	-104.736927	
6200.00	11.15	69.73	6093.71	1050.97	383.42	1038.22	0.00	1412241.51	3212343.30	40.462496	-104.736862	
6300.00	11.15	69.73	6191.82	1069.34	390.12	1056.37	0.00	1412248.36	3212361.38	40.462515	-104.736797	
6400.00	11.15	69.73	6289.94	1087.71	396.82	1074.51	0.00	1412255.22	3212379.47	40.462533	-104.736732	
6500.00	11.15	69.73	6388.05	1106.07	403.52	1092.66	0.00	1412262.07	3212397.55	40.462552	-104.736666	
KOP, Build/Turn 9 DLS	6594.79	11.15	69.73	6481.05	1123.48	409.87	1109.86	0.00	1412268.57	3212414.70	40.462569	-104.736605
	6600.00	11.59	70.56	6486.16	1124.46	410.22	1110.82	9.00	1412268.93	3212415.66	40.462570	-104.736601
	6700.00	20.28	79.43	6582.23	1151.24	416.76	1137.39	9.00	1412275.69	3212442.17	40.462588	-104.736506
	6800.00	29.15	83.08	6672.99	1192.73	422.88	1178.69	9.00	1412282.17	3212483.42	40.462605	-104.736357
	6900.00	38.08	85.13	6756.18	1247.92	428.44	1233.72	9.00	1412288.20	3212538.39	40.462620	-104.736159
	7000.00	47.04	86.50	6829.76	1315.43	433.30	1301.11	9.00	1412293.64	3212605.73	40.462633	-104.735917
	7100.00	56.00	87.51	6891.92	1393.62	437.35	1379.20	9.00	1412298.35	3212683.79	40.462644	-104.735637
	7200.00	64.97	88.33	6941.13	1480.56	440.47	1466.08	9.00	1412302.22	3212770.63	40.462653	-104.735324

Comments	MD (ft)	Incl (°)	Azim True (°)	TVD (ft)	VSEC (ft)	NS (ft)	EW (ft)	DLS (°/100ft)	Northing (ftUS)	Easting (ftUS)	Latitude (°)	Longitude (°)
Landing Point, Hold to TD	7300.00	73.95	89.04	6976.18	1574.10	442.60	1559.60	9.00	1412305.15	3212864.13	40.462659	-104.734988
	7400.00	82.93	89.68	6996.20	1671.94	443.68	1657.47	9.00	1412307.07	3212961.98	40.462662	-104.734637
	7478.84	90.01	90.17	7001.06	1750.53	443.78	1736.10	9.00	1412307.84	3213040.61	40.462662	-104.734354
	7500.00	90.01	90.17	7001.05	1771.68	443.71	1757.27	0.00	1412307.95	3213061.77	40.462662	-104.734278
	7600.00	90.01	90.17	7001.04	1871.61	443.41	1857.27	0.00	1412308.51	3213161.77	40.462661	-104.733919
	7700.00	90.01	90.17	7001.03	1971.54	443.10	1957.27	0.00	1412309.06	3213261.76	40.462660	-104.733559
	7800.00	90.01	90.17	7001.02	2071.47	442.80	2057.27	0.00	1412309.61	3213361.76	40.462659	-104.733200
	7900.00	90.01	90.17	7001.01	2171.39	442.50	2157.27	0.00	1412310.16	3213461.75	40.462658	-104.732840
	8000.00	90.01	90.17	7001.00	2271.32	442.19	2257.27	0.00	1412310.71	3213561.74	40.462657	-104.732481
	8100.00	90.01	90.17	7000.99	2371.25	441.89	2357.27	0.00	1412311.27	3213661.74	40.462657	-104.732122
	8200.00	90.01	90.17	7000.98	2471.18	441.58	2457.26	0.00	1412311.82	3213761.73	40.462656	-104.731762
	8300.00	90.01	90.17	7000.97	2571.11	441.28	2557.26	0.00	1412312.37	3213861.73	40.462655	-104.731403
	8400.00	90.01	90.17	7000.96	2671.03	440.97	2657.26	0.00	1412312.92	3213961.72	40.462654	-104.731044
	8500.00	90.01	90.17	7000.95	2770.96	440.67	2757.26	0.00	1412313.47	3214061.72	40.462653	-104.730684
	8600.00	90.01	90.17	7000.94	2870.89	440.37	2857.26	0.00	1412314.03	3214161.71	40.462652	-104.730325
	8700.00	90.01	90.17	7000.93	2970.82	440.06	2957.26	0.00	1412314.58	3214261.71	40.462651	-104.729965
	8800.00	90.01	90.17	7000.92	3070.75	439.76	3057.26	0.00	1412315.13	3214361.70	40.462651	-104.729606
	8900.00	90.01	90.17	7000.91	3170.67	439.45	3157.26	0.00	1412315.68	3214461.70	40.462650	-104.729247
	9000.00	90.01	90.17	7000.90	3270.60	439.15	3257.26	0.00	1412316.23	3214561.69	40.462649	-104.728887
	9100.00	90.01	90.17	7000.89	3370.53	438.84	3357.26	0.00	1412316.79	3214661.69	40.462648	-104.728528
	9200.00	90.01	90.17	7000.88	3470.46	438.54	3457.26	0.00	1412317.34	3214761.68	40.462647	-104.728169
	9300.00	90.01	90.17	7000.87	3570.39	438.23	3557.26	0.00	1412317.89	3214861.67	40.462646	-104.727809
	9400.00	90.01	90.17	7000.86	3670.31	437.93	3657.26	0.00	1412318.44	3214961.67	40.462645	-104.727450
	9500.00	90.01	90.17	7000.85	3770.24	437.63	3757.26	0.00	1412318.99	3215061.66	40.462644	-104.727090
	9600.00	90.01	90.17	7000.83	3870.17	437.32	3857.26	0.00	1412319.55	3215161.66	40.462644	-104.726731
	9700.00	90.01	90.17	7000.82	3970.10	437.02	3957.26	0.00	1412320.10	3215261.65	40.462643	-104.726372
	9800.00	90.01	90.17	7000.81	4070.03	436.71	4057.26	0.00	1412320.65	3215361.65	40.462642	-104.726012
	9900.00	90.01	90.17	7000.80	4169.95	436.41	4157.26	0.00	1412321.20	3215461.64	40.462641	-104.725653
	10000.00	90.01	90.17	7000.79	4269.88	436.10	4257.26	0.00	1412321.75	3215561.64	40.462640	-104.725294
	10100.00	90.01	90.17	7000.78	4369.81	435.80	4357.26	0.00	1412322.31	3215661.63	40.462639	-104.724934
	10200.00	90.01	90.17	7000.77	4469.74	435.50	4457.26	0.00	1412322.86	3215761.63	40.462638	-104.724575
	10300.00	90.01	90.17	7000.76	4569.67	435.19	4557.25	0.00	1412323.41	3215861.62	40.462637	-104.724216
	10400.00	90.01	90.17	7000.75	4669.59	434.89	4657.25	0.00	1412323.96	3215961.62	40.462637	-104.723856
	10500.00	90.01	90.17	7000.74	4769.52	434.58	4757.25	0.00	1412324.51	3216061.61	40.462636	-104.723497
	10600.00	90.01	90.17	7000.73	4869.45	434.28	4857.25	0.00	1412325.07	3216161.61	40.462635	-104.723137
	10700.00	90.01	90.17	7000.72	4969.38	433.97	4957.25	0.00	1412325.62	3216261.60	40.462634	-104.722777
	10800.00	90.01	90.17	7000.71	5069.31	433.67	5057.25	0.00	1412326.17	3216361.59	40.462633	-104.722419
	10900.00	90.01	90.17	7000.70	5169.23	433.36	5157.25	0.00	1412326.72	3216461.59	40.462632	-104.722059
	11000.00	90.01	90.17	7000.69	5269.16	433.06	5257.25	0.00	1412327.27	3216561.58	40.462631	-104.721700
	11100.00	90.01	90.17	7000.68	5369.09	432.76	5357.25	0.00	1412327.83	3216661.58	40.462630	-104.721341
	11200.00	90.01	90.17	7000.67	5469.02	432.45	5457.25	0.00	1412328.38	3216761.57	40.462629	-104.720981
	11300.00	90.01	90.17	7000.66	5568.95	432.15	5557.25	0.00	1412328.93	3216861.57	40.462628	-104.720622
	11400.00	90.01	90.17	7000.65	5668.87	431.84	5657.25	0.00	1412329.48	3216961.56	40.462628	-104.720262
	11500.00	90.01	90.17	7000.64	5768.80	431.54	5757.25	0.00	1412330.03	3217061.56	40.462627	-104.719903
	11600.00	90.01	90.17	7000.63	5868.73	431.23	5857.25	0.00	1412330.59	3217161.55	40.462626	-104.719544
	11700.00	90.01	90.17	7000.61	5968.66	430.93	5957.25	0.00	1412331.14	3217261.55	40.462625	-104.719184
	11800.00	90.01	90.17	7000.60	6068.59	430.63	6057.25	0.00	1412331.69	3217361.54	40.462624	-104.718825
	11900.00	90.01	90.17	7000.59	6168.51	430.32	6157.25	0.00	1412332.24	3217461.54	40.462623	-104.718466
	12000.00	90.01	90.17	7000.58	6268.44	430.02	6257.25	0.00	1412332.79	3217561.53	40.462622	-104.718106
	12100.00	90.01	90.17	7000.57	6368.37	429.71	6357.25	0.00	1412333.35	3217661.52	40.462621	-104.717747
	12200.00	90.01	90.17	7000.56	6468.30	429.41	6457.25	0.00	1412333.90	3217761.52	40.462620	-104.717388
	12300.00	90.01	90.17	7000.55	6568.23	429.10	6557.25	0.00	1412334.45	3217861.51	40.462619	-104.717028
	12400.00	90.01	90.17	7000.54	6668.15	428.80	6657.25	0.00	1412335.00	3217961.51	40.462619	-104.716669
	12500.00	90.01	90.17	7000.53	6768.08	428.49	6757.24	0.00	1412335.55	3218061.50	40.462618	-104.716309
	12600.00	90.01	90.17	7000.52	6868.01	428.19	6857.24	0.00	1412336.11	3218161.50	40.462617	-104.715950
	12700.00	90.01	90.17	7000.51	6967.94	427.89	6957.24	0.00	1412336.66	3218261.49	40.462616	-104.715591
	12800.00	90.01	90.17	7000.50	7067.87	427.58	7057.24	0.00	1412337.21	3218361.49	40.462615	-104.715231
	12900.00	90.01	90.17	7000.49	7167.79	427.28	7157.24	0.00	1412337.76	3218461.48	40.462614	-104.714872
	13000.00	90.01	90.17	7000.48	7267.72	426.97	7257.24	0.00	1412338.31	3218561.48	40.462613	-104.714513
	13100.00	90.01	90.17	7000.47	7367.65	426.67	7357.24	0.00	1412338.87	3218661.47	40.462612	-104.714153
	13200.00	90.01	90.17	7000.46	7467.58	426.36	7457.24	0.00	1412339.42	3218761.47	40.462611	-104.713794
	13300.00	90.01	90.17	7000.45	7567.51	426.06	7557.24	0.00	1412339.97	3218861.46	40.462610	-104.713434
	13400.00	90.01	90.17	7000.44	7667.43	425.75	7657.24	0.00	1412340.52	3218961.45	40.462609	-104.713075
	13500.00	90.01	90.17	7000.43	7767.36	425.45	7757.24	0.00	1412341.07	3219061.45	40.462608	-104.712716
	13600.00	90.01	90.17	7000.42	7867.29	425.15	7857.24	0.00	1412341.63	3219161.44	40.462608	-104.712356
	13700.00	90.01	90.17	7000.41	7967.22	424.84	7957.24	0.00	1412342.18	3219261.44	40.462607	-104.711997
	13800.00	90.01	90.17	7000.40	8067.15	424.54	8057.24	0.00	1412342.73	3219361.43	40.462606	-104.711638
	13900.00	90.01	90.17	7000.38	8167.07	424.23	8157.24	0.00	1412343.28	3219461.43	40.462605	-104.711278
	14000.00	90.01	90.17	7000.37	8267.00	423.93	8257.24	0.00	1412343.83	3219561.42	40.462604	-104.710919
	14100.00	90.01	90.17	7000.36	8366.93	423.62	8357.24	0.00	1412344.39	3219661.42	40.462603	-104.710560
	14200.00	90.01	90.17	7000.35	8466.86	423.32	8457.24	0.00	1412344.94	3219761.41	40.462602	-104.710200
	14300.00	90.01	90.17	7000.34	8566.79	423.02	8557.24	0.00	1412345.49	3219861.41	40.462601	-104.709841
	14400.00	90.01	90.17	7000.33	8666.71	422.71	8657.24	0.00	1412346.04	3219961.40	40.462600	-104.709481
	14500.00	90.01	90.17	7000.32	8766.64	422.41	8757.24	0.00	1412346.59	3220061.40	40.462599	-104.709122
	14600.00	90.01	90.17	7000.31	8866.57	422.10	8857.23	0.00	1412347.15	3220161.39	40.462598	-104.708763
	14700.00	90.01	90.17	7000.30	8966.50	421.80	8957.23	0.00	1412347.70	3220261.39	40.462597	-104.708403
	14800.00	90.01	90.17	7000.29	9066.43	421.49	9057.23	0.00	1412348.25	3220361.38	40.462596	-104.708044
	14900.00	90.01	90.17	7000.28								

Comments	MD (ft)	Incl (°)	Azim True (°)	TVD (ft)	VSEC (ft)	NS (ft)	EW (ft)	DLS (°/100ft)	Northing (ftUS)	Easting (ftUS)	Latitude (°)	Longitude (°)
----------	------------	-------------	------------------	-------------	--------------	------------	------------	------------------	--------------------	-------------------	-----------------	------------------

Survey Type: Def Plan

Survey Error Model: ISCWSA Rev 0 *** 3-D 95.000% Confidence 2.7955 sigma
Survey Program:

Description	Part	MD From (ft)	MD To (ft)	EOU Freq (ft)	Hole Size	Casing Diameter (in)	Expected Max Inclination (deg)	Survey Tool Type	Borehole / Survey
	1	0.000	4.000	1/100.000	13.500	9.625		NAL_MWD_IFR1-Depth Only	Original Hole / Seeley 108-09N-30C-L R0 mdv 01Aug19
	1	4.000	1800.000	1/100.000	13.500	9.625		NAL_MWD_IFR1	Original Hole / Seeley 108-09N-30C-L R0 mdv 01Aug19
	1	1800.000	17572.337	1/100.000	8.500	5.500		NAL_MWD_IFR1+MS	Original Hole / Seeley 108-09N-30C-L R0 mdv 01Aug19