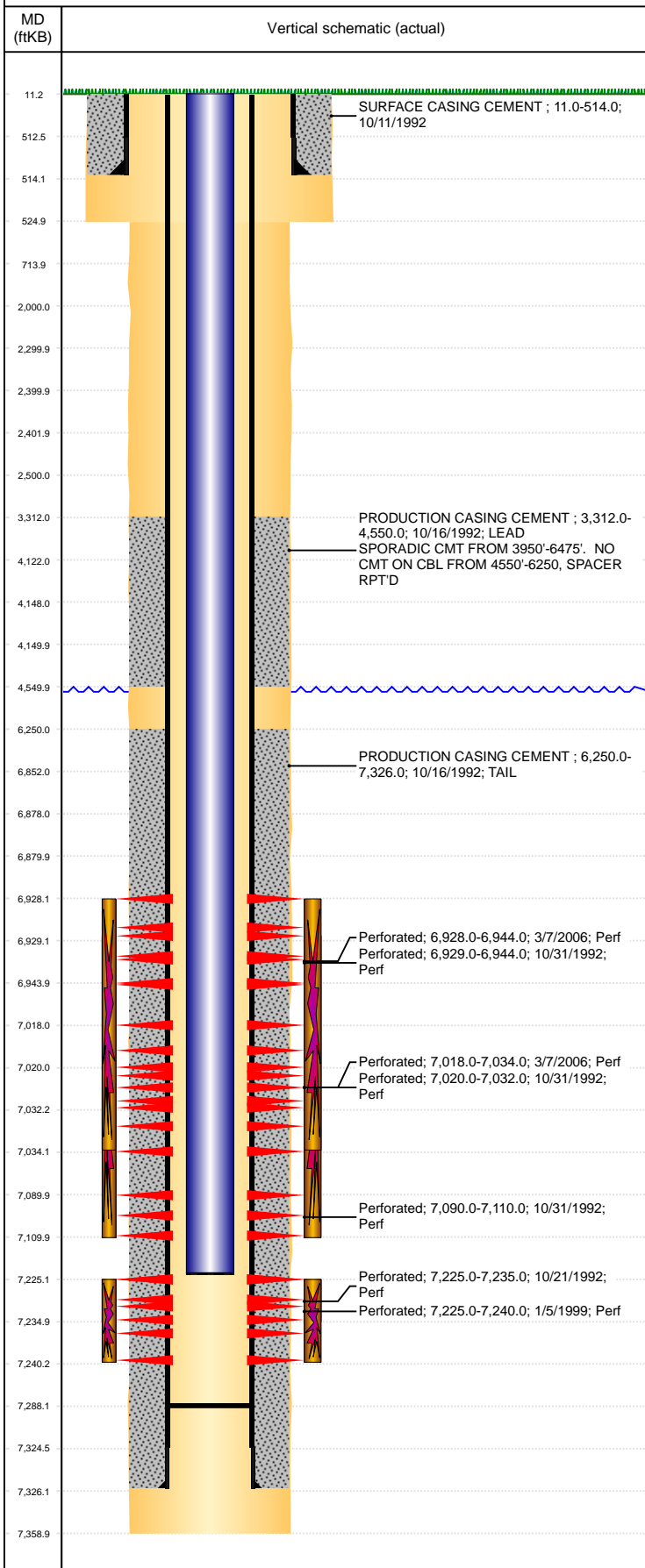


Well Name: SCHMIDT 19-15G

VERTICAL, ORIGINAL HOLE, 9/11/2019 10:32:45 AM



Well Header									
API 05-123-14900		Business Unit DJ BASIN			District 15		Well Config VERTICAL		
KB - GL / MSL (ft... 11.00		Spud Date 10/11/1992		P & A Date		Well Production Status PR			SoRT No
Comment DISCREPANCY: GR ELEVATION- ST & SCHEMATIC 4780', LOGS 4770'. CD REFRAC SCREENED OUT. FIELD OPS NOTICE- FLOWLINES ABANDONED PER RULE 1103, RCVD 9/6/17. STATE SHOWS SHUT IN SINCE MAR 2017.									
Surface Location (Congressional)									
Qtr 3 SW	Qtr 4 SE	Section 19	Twnshp 4	Twnsh... N	Range 65	Rng E/... W	Actual Latitude (°) 40.29201956		Actual Longitude (°) -104.70360137
Wellbore Sections									
Section Des			Size (in)			Act Top, MD (ftKB)		Act Btm, MD (ftKB)	
SURFACE			12 1/4			11		525	
PRODUCTION			7 7/8			525		7,359	
Casing Strings									
Csg Des		Run Date		OD (in)	Wt/Len (lb/ft)	Grade	Top, MD (ftKB)	MD (ftKB)	
Surface		10/11/1992		8 5/8	23.00	WC-50	11.0	514.0	
Production		10/16/1992		4 1/2	11.60	M-75	11.0	7,326.0	
Cement									
Des				Start Date		Top (ftKB)		Btm (ftKB)	
SURFACE CASING CEMENT				10/11/1992		11.0		514.0	
PRODUCTION CASING CEMENT				10/16/1992		3,312.0		4,550.0	
PRODUCTION CASING CEMENT				10/16/1992		6,250.0		7,326.0	
Zone Statuses									
Zone Name	Status Date	Status	Fluid Type	Job			Prod Method		
NIOBRARA	10/19/2006	PR	Water	RE-FRAC, 3/3/2006 00:00			Flowing		
NIOBRARA	2/5/2010	PR							
CODELL	3/10/2017	SI							
CODELL	8/10/2017	PR							
Perforation Data									
Linked Zone		Bnch/Stg	Entered Shot Total	Top (ftKB)		Btm (ftKB)		Date	
NIOBRARA, ORIGINAL HOLE		A	96	6,928.00		6,944.00		3/7/2006	
NIOBRARA, ORIGINAL HOLE		A	10	6,929.00		6,944.00		10/31/1992	
NIOBRARA, ORIGINAL HOLE		B	96	7,018.00		7,034.00		3/7/2006	
NIOBRARA, ORIGINAL HOLE		B	10	7,020.00		7,032.00		10/31/1992	
NIOBRARA, ORIGINAL HOLE		C	8	7,090.00		7,110.00		10/31/1992	
CODELL, ORIGINAL HOLE			20	7,225.00		7,235.00		10/21/1992	
CODELL, ORIGINAL HOLE			30	7,225.00		7,240.00		1/5/1999	
Stimulation Intervals									
Zone			Start Date			Top (ftKB)		Btm (ftKB)	
NIOBRARA, ORIGINAL HOLE			3/21/2006			6,928.0		7,034.0	
NIOBRARA, ORIGINAL HOLE			11/3/1992			6,929.0		7,110.0	
CODELL, ORIGINAL HOLE			10/27/1992			7,225.0		7,235.0	
CODELL, ORIGINAL HOLE			1/12/1999			7,225.0		7,240.0	
Other In Hole									
Run Date		Des				OD (in)	Top (ftKB)	Btm (ftKB)	
Logs									
Date		Type				Top, MD (ftKB)		Btm, MD (ftKB)	
10/15/1992		DENSILOG				3,700.0		7,326.0	
10/15/1992		INDUCTION				515.0		7,356.0	
10/21/1992		CBL/CCL/GR				3,100.0		7,280.0	
Plug Back Total Depths									
Date		Type		Com				Depth (ftKB)	
10/21/1992		FILL		DEPTH LOGGER FROM CBL				7,287.0	
10/17/2006		FILL		CLEAN OUT & LAND TBG				7,288.0	