



RM F-108

BEST COPY AVAILABLE

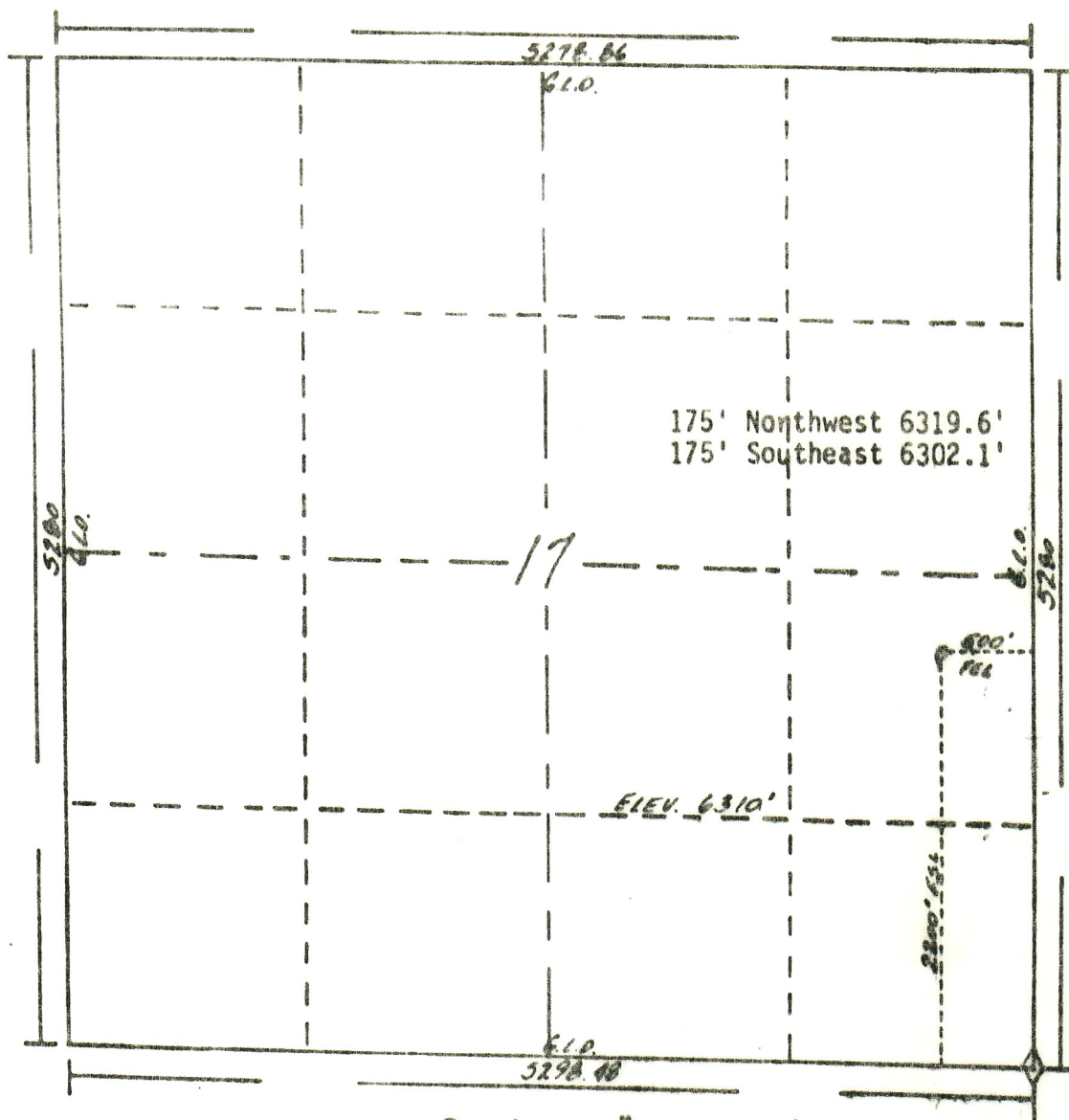
EXHIBIT "A"
Location & Elevation Plat

RECEIVED

OCT 1 1981

R. 93 W.

COLO. OIL & GAS CONS. COMMI.



T.
7
N

Scale... 1" = 1000'

Powers Elevation of Denver, Colorado
has in accordance with a request from *Ledy Bartlett*
for *DAMSON OIL CORPORATION*
determined the location of *#17-1 BIG GULCH*
to be *2200' ESE & 500' FEL* of Section 17 Township 7N.
Range 93 W. of the 6th Principal Meridian
Moffat County, Colorado

I hereby certify that this plat is an accurate representation of a correct survey showing the location of

17-1 BIG GRACK

Date: 9-18-80

Chas. L. Beck

7