



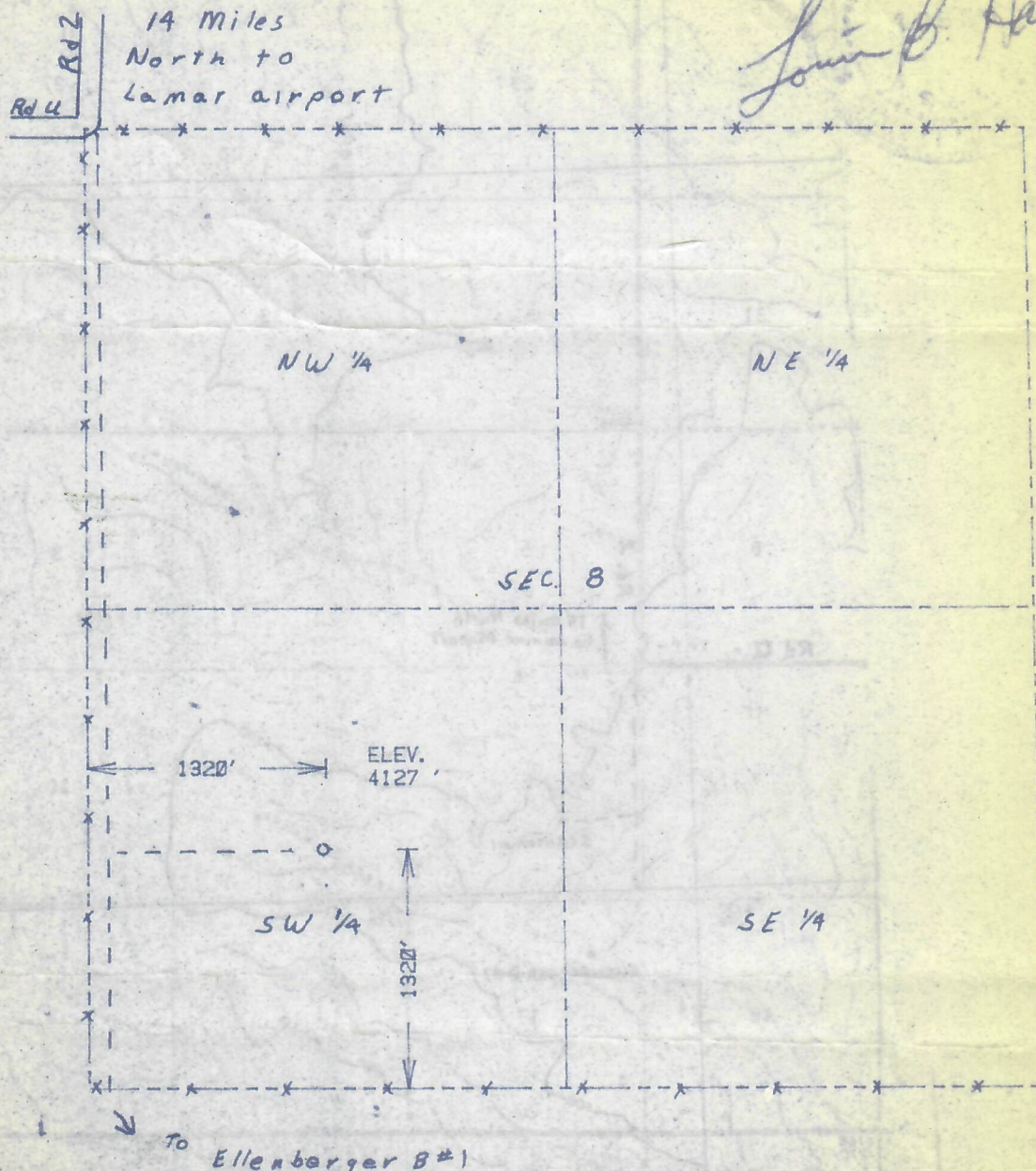
00655292

RECEIVED

MAR 23 1983

COLO. OIL &amp; GAS CONS. COMM.

I hereby certify that the accompanying plat is an accurate representation of a correct survey showing the location of a proposed well. The location may be described as a point 1320 feet north of the south line, and 1320 feet east of the west line of Section 8, Township 25 S., Range 47 W of the 6th Prime Meridian, PROWERS County, COLORADO. The surface elevation at this point is 4127 feet above M.S.L.



SCALE - 1"=1000'

BEST IMAGE  
AVAILABLE

○ SURVEYED POINT  
REFERENCE STAKE ( 200 'S, 200 'W )  
SW 1/4 SEC. 8 , T 25 S , R 47 W

jr  
3-25-83**ARMON  
ENGINEERING  
SERVICES**

SCRANTON#1 (RESTAKE)

TXO PRODUCTION CORP

PROWERS CO., COLORADO

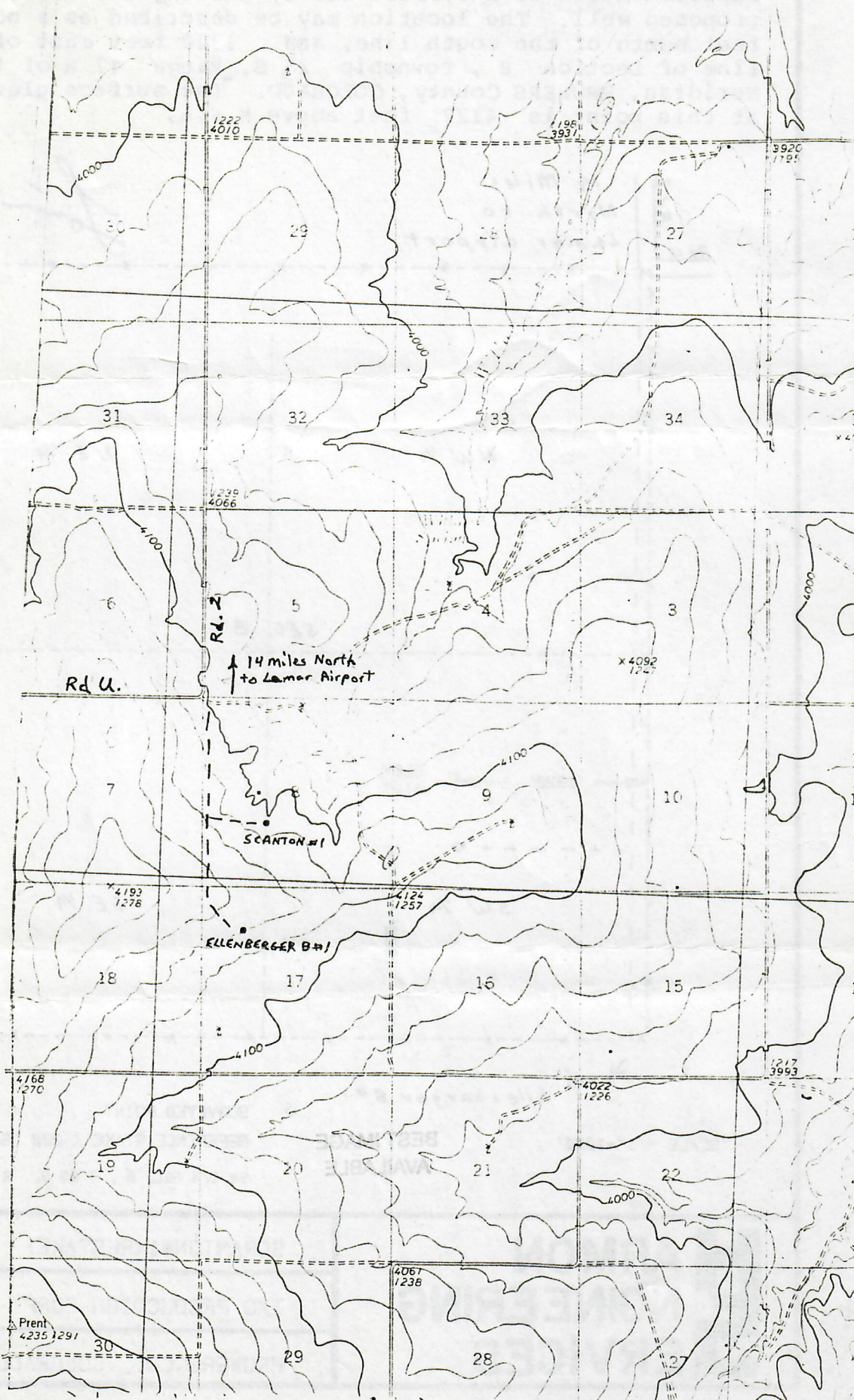
18 MARCH 1982



RECEIVED

MAR 2 3 1988

COLO. OIL & GAS CORP. COMM.



BEST IMAGE  
AVAILABLE