

PROPETRO**JOB SUMMARY****TICKET NUMBER: DS-227****CEMENTING - ROCKY MOUNTAIN DIVISION**

P.O. BOX 827 - VERNAL UT, 84078 - (435) 789-7407

COMPANY NAME: LOCIN OIL CORPORATION**DATE: AUG-23-FRI-19****COUNTY: RIO BLANCO****LEASE NAME: FORK UNIT # 2-32-1-1****RIG NO: NORTHERN PRO****JOB TYPE: PUDDLE SQUEEZE**

DESCRIPTION	WGT/GRADE	THREAD	DEPTH FROM	DEPTH TO
PRODUCTION CSG SIZE: 5-1/2 INCH	17 LBS	8 ROUND	0	260 + FT
TUBING SIZE: 2-3/8	4.6 LBS	TBG	0	260 FT
MATERIALS FURNISHED	SACKS	SLURRY WT PPG	SLURRY YIELD FT3	WATER GAL/SK
PREMIUM "G" CEMENT (3 % CACL,)	250 SKS	15.8 LBS	1.15 YEILD	5 GAL / SK
PREMIUM "G" CEMENT (FOR TOP OUT)	5 SKS	15.8 LBS	1.15 YEILD	5 GAL / SK

EQUIPMENT: CREW TRUCK # 1204, PUMP TRUCK # 69 , BULK TRUCKS # 2200-0517**PERSONELL: DAVE S, ROYCE , RYAN****NOTES :DID A WALKING SQUEEZE PSI UP TP 300 LBS AND HELD AND STAYED FULL WHEN RIGGED DOWN****OPERATOR: DAVID SEARLE****ACCEPTED AND APPROVED BY:****MIKE**

PROPETRO**JOB LOG****TICKET NUMBER: DS-227****CEMENTING - ROCKY MOUNTAIN DIVISION**

P.O. BOX 827 - VERNAL UT, 84078 - (435) 789-7407

COMPANY NAME: LOCIN OIL CORPORATION**DATE: AUG-23-FRI-19****COUNTY: RIO BLONCO-COL****LEASE NAME: FORK UNIT # 2-32-1-1****RIG NO: NORTHERN PROD**

DESCRIPTION	TIME	RATE	PSI	VOLUME
PRE TRIP EQUIPMENT IN VERNAL	5:00	~	~	~
ARRIVE ON LOCATION	7:00	~	~	~
SAFETY MEETING	7:05	~	~	~
RIG UP	7:15	~	~	~
RIG RIH TO SET RETAINER	7:30	~	~	~
#1 RETAINER SET @ 260 FT	8:02	~	~	RETAINER SET @ 260 FT
STING OUT OF RETAINER	8:02	~	~	STING OUT
FILL PUMPING LINES	8:02	2	140	0 / 2 BBLD
PSI TEST LINES	8:03	0.5	0 / 3000	STING OUT
START H2O TO FILL THE 5-1/2 CSG	8:04	2	140	0
END H2O-GOOD CIR	8:05	2	140	6 BBLS
STING INTO RETAINER	8:06	~	~	STING IN
ESTABLISH INJECTION RATE	~	~	~	~
DOWN TBG-THRU RETAINER	~	~	~	~
START INJECTION RATE-H2O	8:12	0.5	80	0
CAUGHT CIR-UP 5-1/2 ANN	8:15	0.5	80	2 BBLS
END INJECTION RATE	8:16	0.5	80	2 BBLS
RIG UP TO 5-1/2	8:19	~	~	~
CLOSE IN TBG	8:19	~	~	~
START INJECTION RATE	8:19	0.5	30	0
PUMPING INJECTION-H2O	8:20	0.5	30	1
PUMPING INJECTION-H2O	8:21	0.5	90	2
END INJECTION RATE	8:22	0.5	100	3 BBLS
C.M MAKE PHONE CALL	8:27	~	~	~
RIG TOOH	9:30	~	~	RIG TOOH
NIPPLE DOWN WELL HEAD	9:30	~	~	NIPPLE DOWN
NIPPLE UP-FLANGE	9:45	~	~	RIG FLANGE
PUMP DOWN 5-1/2 CSG	10:00	~	~	~
DOWN TO RETAINER & UP	10:00	~	~	~
5-1/2 IN THE 7-7/8 - 8-5/8	10:00	~	~	~
SURFACE ANNULAS	~	~	~	~
START H2O SPACER	10:01	1	0	0
PUMPING H2O-NO CIR	10:03	1	0	4
CAUGHT CIR SURFACE ANNULAR	10:06	1	30	6
END H2O SPACER	10:09	1	30	10 BBLS

OPERATOR: DAVID SEARLE THANKS ACCEPTED AND APPROVED BY: MIKE

PROPETRO**JOB LOG****TICKET NUMBER: DS-227****CEMENTING - ROCKY MOUNTAIN DIVISION****P.O. BOX 827 - VERNAL UT, 84078 - (435) 789-7407****COMPANY NAME: LOCIN OIL CORPORATION****DATE: AUG-23-FRI-19****COUNTY: RIO BLONCO-COL****LEASE NAME: FORK UNIT # 2-32-1-1****RIG NO: NORTHERN PROD**

DESCRIPTION	TIME	RATE	PSI	VOLUME
START 15.8 LB CEMENT	10:14	1.5	30	0
PUMPING CEMENT-NO CIR	10:22	1.5	30	10
PUMPING CEMENT-NO CIR	10:26	1.5	30	20
CAUGHT CIR- H2O UP ANNULAR	10:28	1.5	30	27
CLOSE IN ANNULAR VALVE	10:28	1.5	40	28
PUMPING CEMENT	10:42	1.5	40	30
CEMENT UP ANNULAR	10:46	1	200	44
END PUMP-START STAGE'S	10:50	1	200	46
START PUMP DISP W/CMT	10:56	0.5	0	46
END PUMP W/CMT	10:56	0.5	300	47
START PUMP DISP W/CMT	10:58	0.5	40	47
END PUMP W/CMT	10:58	0.5	320	48
START PUMP DISP W/CMT	11:02	0.5	0	48
END PUMP W/CMT	11:02	0.5	300	49
START PUMP DISP W/CMT	11:12	0.5	0	49
END PUMP W/CMT	11:12	0.5	300	49.5
START PUMP DISP W/CMT	11:22	0.5	0	49.5
END PUMP W/CMT	11:22	0.5	300	50
START PUMP DISP W/CMT	11:37	0.5	0	50
END PUMP W/CMT	11:37	0.5	310 / -	50.5
HOLD PSI	11:39	~	50	50.5
HOLD PSI	11:46	~	40	50.5
START PUMP DISP W/CMT	11:50	0.5	30	50.75
END PUMP W/CMT	11:50	0.5	360	50.75
HOLD PSI	11:52	~	290	50.75
HOLD PSI	11:53	~	200	50.75
HOLD PSI	11:56	~	170	50.75
START PUMP DISP W/CMT	12:00	0.5	150	50.75
END PUMP W/CMT (250 SKS)	12:00	0.5	390	250 SKS / 51.2 BBLs
HOLD PSI	12:00	~	360	51.2
HOLD PSI	12:01	~	310	51.2
HOLD PSI	12:02	~	290	51.2
HOLD PSI	12:04	~	250	51.2
START PUMP DISP W/CMT	12:07	0.5	220	51.2
END PUMP DISP W/ CMT	12:07	0.5	310	51.2
HOLD PSI	12:08	~	300	51.2
PRESSURE HOLDING	12:11	~	290	51.2
RELEASED PSI ON TRUCK	12:11	~	~	~

OPERATOR: DAVID SEARLE THANKS ACCEPTED AND APPROVED BY: MIKE

PROPETRO

JOB LOG

TICKET NUMBER: DS-227

CEMENTING - ROCKY MOUNTAIN DIVISION

P.O. BOX 827 - VERNAL UT, 84078 - (435) 789-7407

COMPANY NAME: LOCIN OIL CORPORATION

DATE: AUG-23-FRI-19

COUNTY: RIO BLONCO-COL

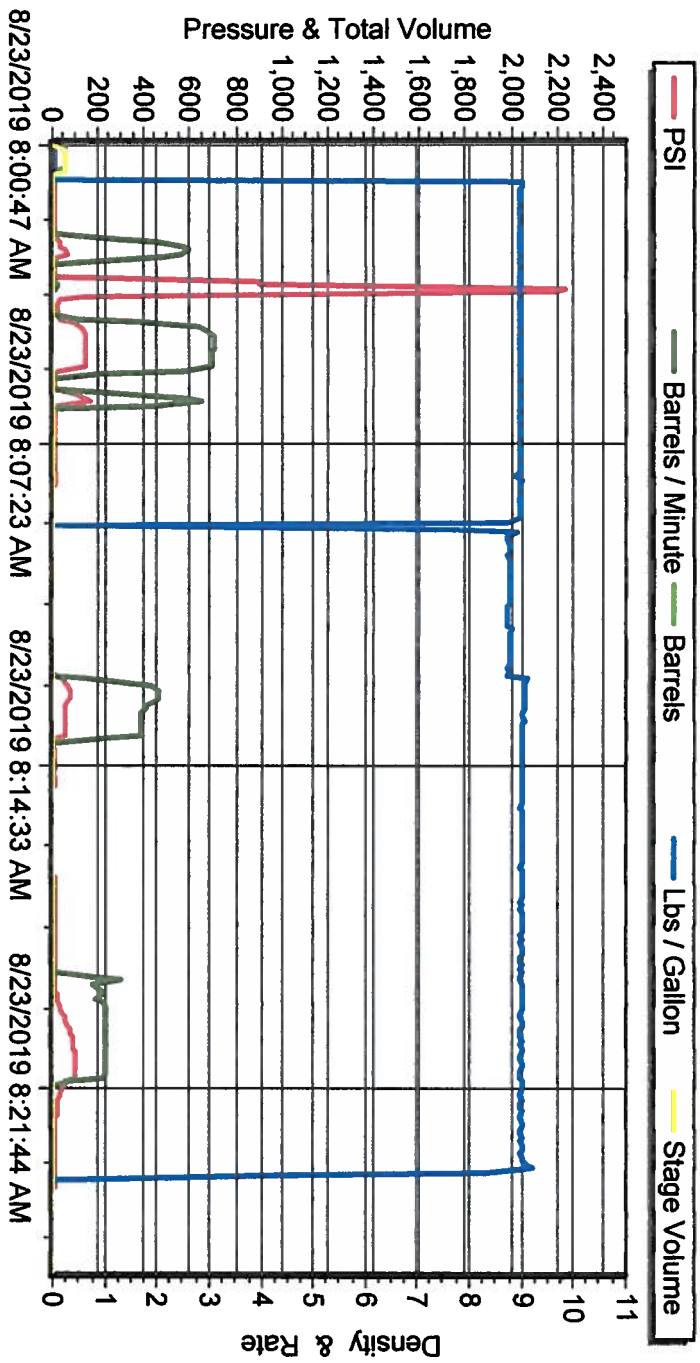
LEASE NAME: FORK UNIT # 2-32-1-1

RIG NO: NORTHERN PROD

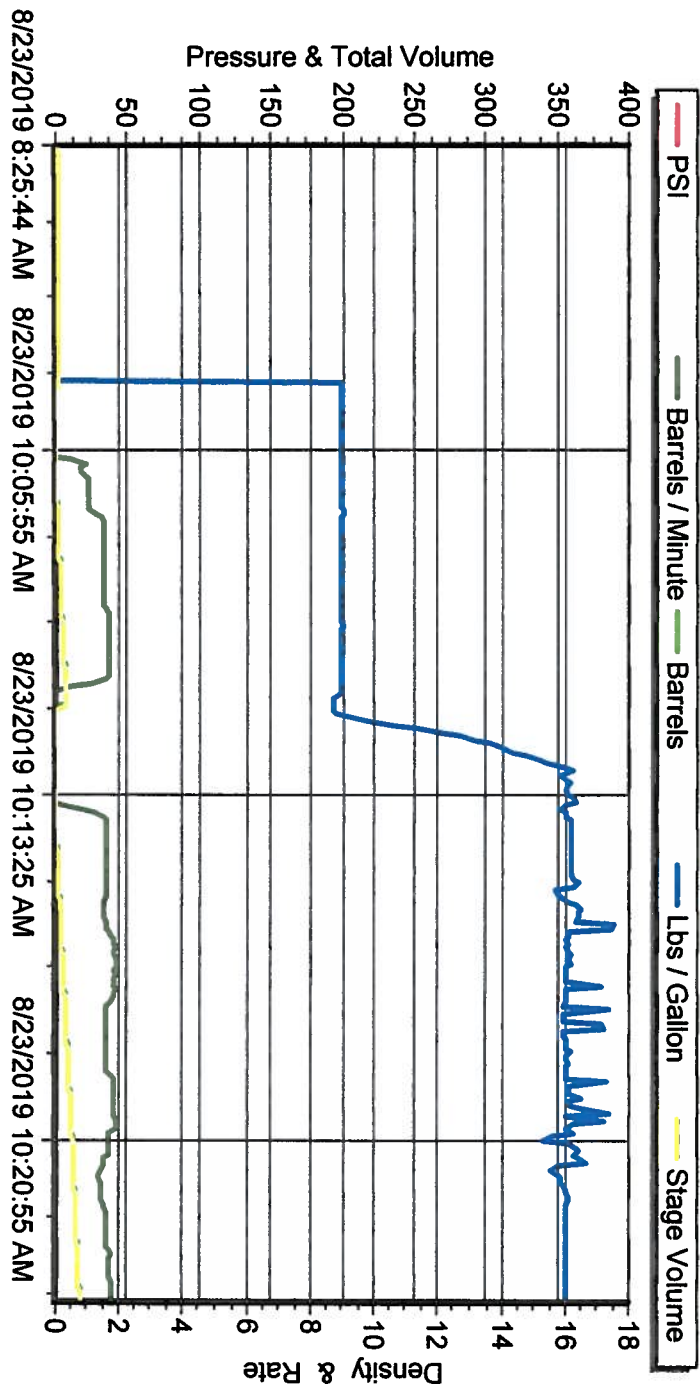
[illegible]

OPERATOR: DAVID SEARLE **THANKS** **ACCEPTED AND APPROVED BY: MIKE**

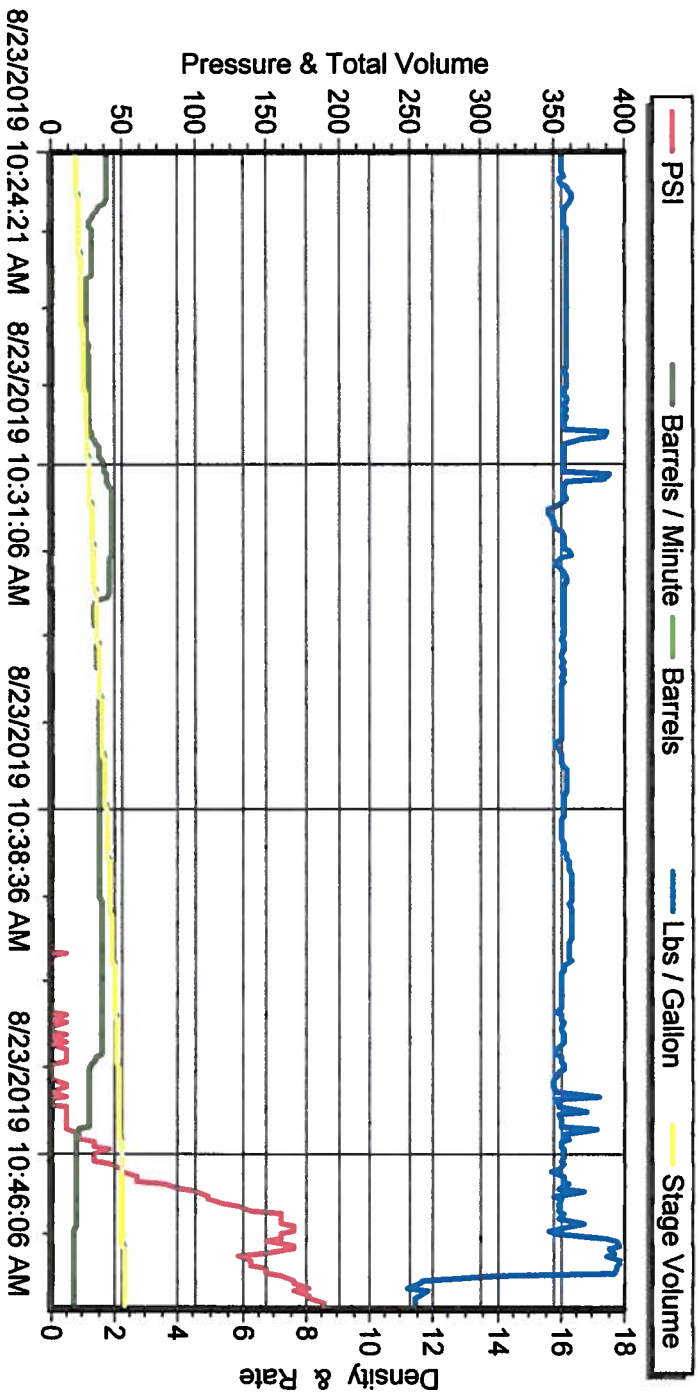
LOCIN OIL SQUEEZE FORK UNIT 2-32-1-1



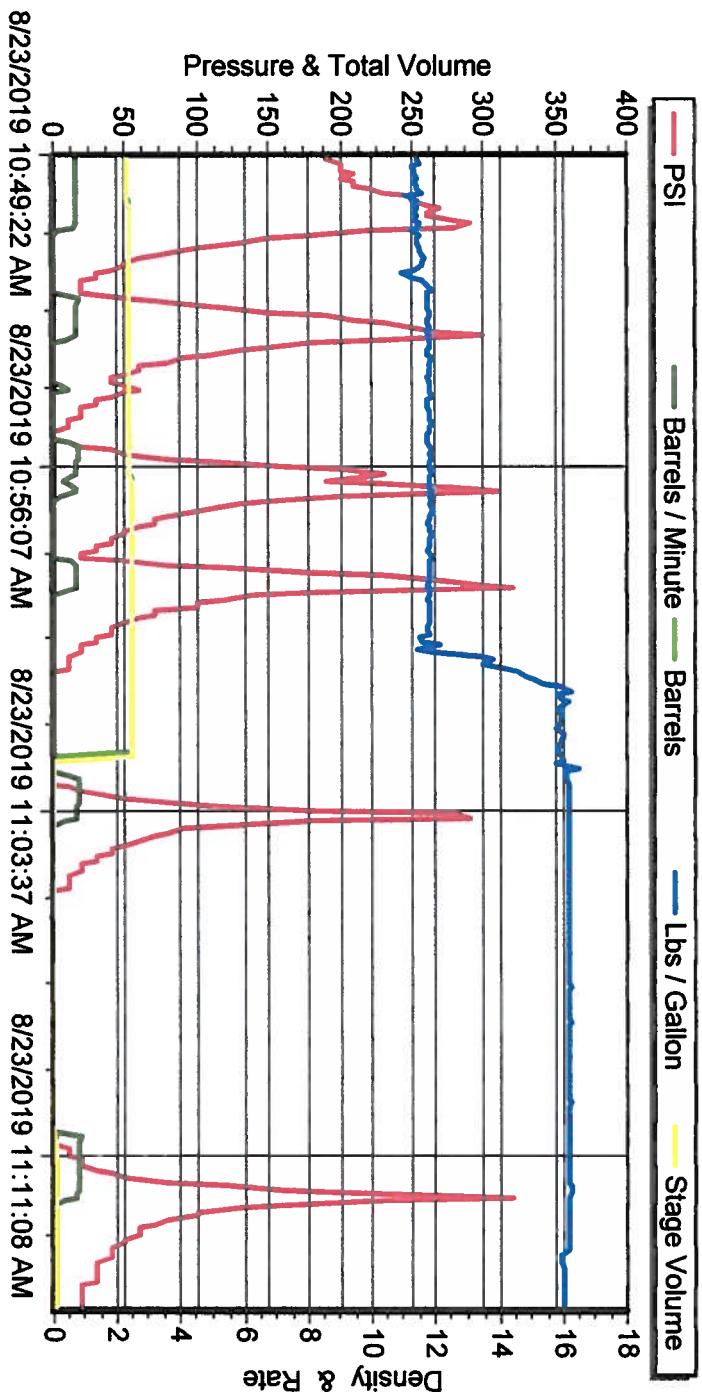
LOCIN OIL SQUEEZE FORK UNIT 2-32-1-1



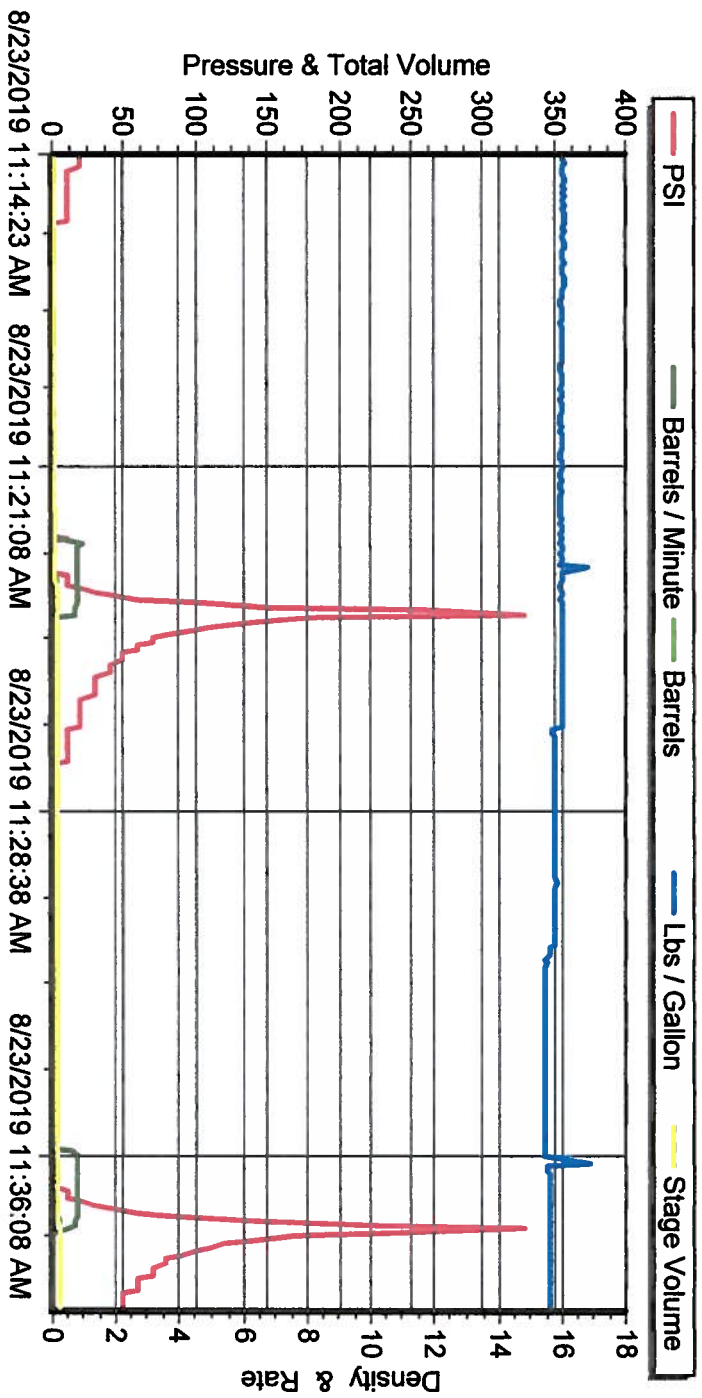
LOCIN OIL SQUEEZE FORK UNIT 2-32-1-1



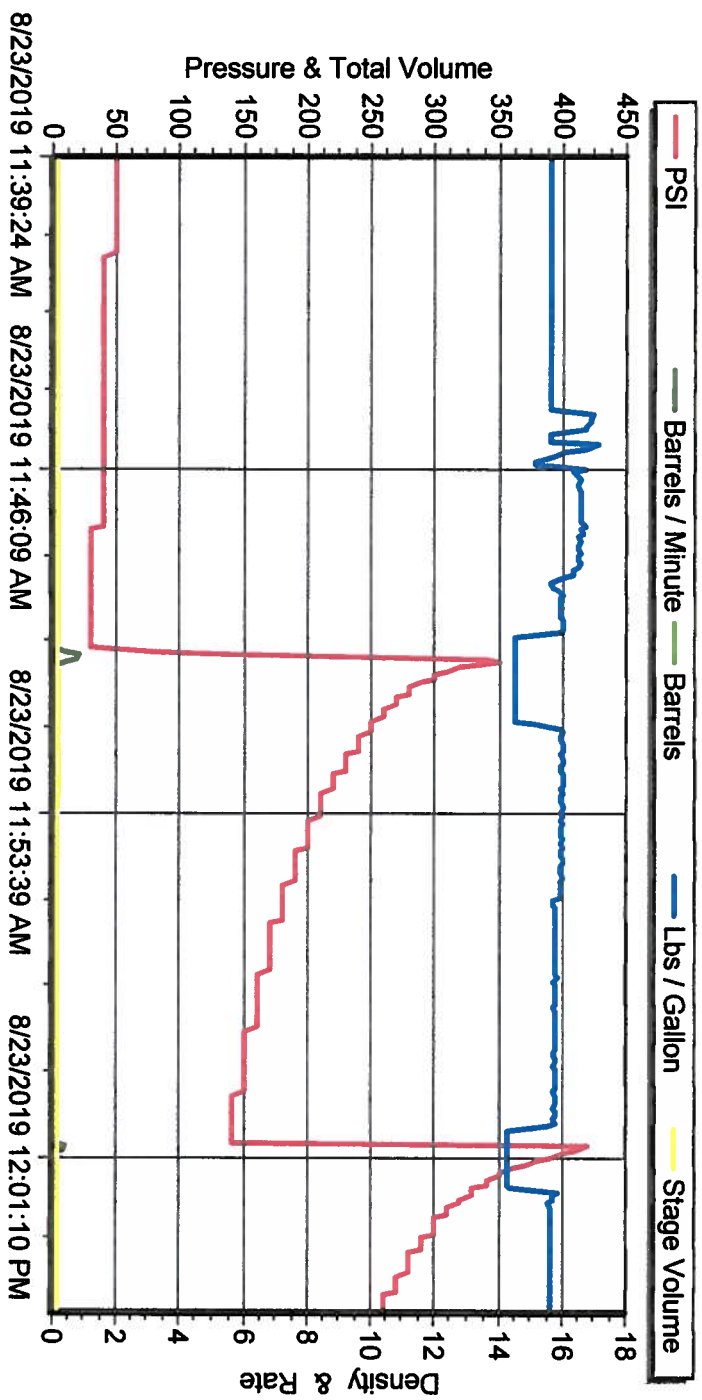
LOCIN OIL SQUEEZE FORK UNIT 2-32-1-1



LOCIN OIL SQUEEZE FORK UNIT 2-32-1-1



LOCIN OIL SQUEEZE FORK UNIT 2-32-1-1



LOCIN OIL SQUEEZE FORK UNIT 2-32-1-1

