

Foundation Energy Management, LLC

WELLBORE DIAGRAM

Well / Battery	Prospect Name		Total Depth	Current Status
HILLTOP	Bonny		2,500	PR
Location	Sec-Twn-Rng		Producing Horizon	County & State
13-5	5-1S-45W		NIOBRARA	Yuma CO

WELLBORE DIAGRAM

Prepared Date:

Prepared By: Mike Jumper

General Info

API #: 05-125-

KB Elevation:

GL Elevation:

Spud Date:

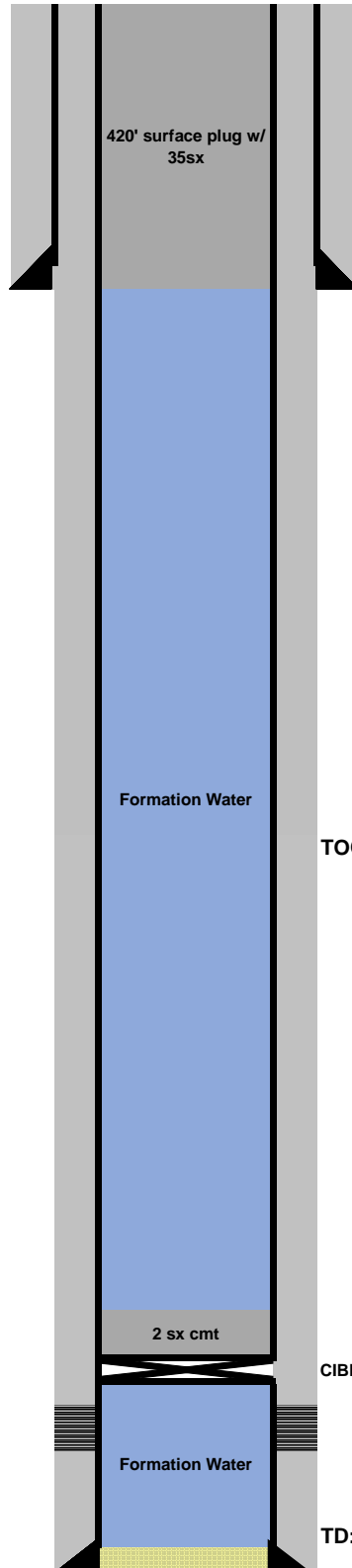
Completion Date:

TVD:

MD:

Last PBTD:

Tubing Detail



Surface Casing

7" inch (OD)
17 # (weight)
grade
420 depth from KB
SURF cement top
100 sacks of cement
9-5/8" inch (OD) HOLE SIZE

Production Casing

4-1/2" inch (OD)
11 # (weight)
grade
2,500 depth from KB
SURF cement top
200 sacks of cement
6-1/4" inch (OD) HOLE SIZE

Pump Details:
none

Pumping Unit Details:

Well Notes: