

TICKET NUMBER: KC-299

P.O. BOX 827 - VERNAL, UT, 84078 - (435) 789-7407

DATE: 7/24/2019

COUNTY: RIO BLANCO

RIG NO: N/A

DESCRIPTION	QTY	UNIT	RATE	AMOUNT
PUMP TRUCK MILEAGE	200	MILES	\$6.90	\$1,380.00
CREW TRUCK MILEAGE	200	MILES	\$4.05	\$810.00
PUMP CHARGE	275	FT	\$3,400.00	\$3,400.00
DATA ACQUISITION	1	1 EACH	\$1,800.00	NO CHARGE
BLENDING CHARGE	117	FT3	\$3.80	\$444.60
DELIVERY CHARGE	550	TM	\$2.30	\$1,265.00

PREM CMT TYPE (G)	117	SKS	\$30.00	\$3,510.00
P-401	50	LBS	\$1.97	\$98.50
P-719	100	LBS	\$3.00	\$300.00

[illegible]

			SUBTOTAL:	\$11,208.10
			DISCOUNT:	\$5,604.05
			AFTER DISCOUNT:	\$5,604.05
			UTERO CHARGE:	
			TOTAL INVOICE:	\$5,604.05

ACCEPTED AND APPROVED BY:

TAXES WILL BE ADDED ON INVOICE

*****ANY QUESTIONS OR CONCERNS PLEASE CALL*****

PROPETRO**JOB LOG****TICKER NUMBER: KC -299****CEMENTING - ROCKY MOUNTAIN DIVISION**

P.O. BOX 827 - VERNAL UT, 84078 - (435) 789-7407

COMPANY NAME: LOCIN OIL CORPORATION**DATE: 7/24/2019****COUNTY: RIO BLANCO****LEASE NAME: FORK UINT 9-10-2-2****RIG NO: N/A**

DESCRIPTION	TIME	RATE	PSI	VOLUME
SAFTY MEETING@ SHOP	10:15			
58 BLOWN AIR BAG				
ON LOC	14:45			
SAFTY MEETIN/RIG UP	14:48			
SAFTY MEETING DOG HOUSE	15:00			
PSI TEST PUMP & LINES	15:05	2	0-500	0-2
SHOT HOLES @ 275'				
PUMP THROUGH PERFS	15:07	2	0	0
BROKE CIRCULATION	15:11		50	15
START DYE WATER	15:17	2.5	40	0-2
START CMT @ 15.8	15:17	"	50	0
CMT TO SURFACE 79 SKS	15:26	"	50	16.1
END MIXED 90 SKS	15:27	"	50	18.4
WASH PUMP				
RIG RIG DOWN				
DIG WELL UP/CUT OFF				
TOP OUT				
START CMT @ 18.8	17:30	1	30	0
END 5 1/2 FULL 14 SKS		1	"	2.8
TOP OUT ANN		1	"	2.8
END ANN 8 SKS	17:34	1	"	4.4
BACKSIDE KEEP FALLING				
MIXED UP 1 BBL 5 SKS	17:40			
FILLED UP 5 GAL BUCKETS				
KEEP TOPPING OFF				
WATER TRUCK DRIVER LEFT ?				
SO WE AGREED TO				
PUT ABOUT 5 SKS ON GROUND				
RIG CREW WILL TOP OUT				
IN MORNING				
CMT DOWN ABOUT 7' WHEN I LEFT				
RELEASED FROM LOC	18:30			

OPERATOR: KARL CHAPMAN**ACCEPTED AND APPROVED BY:**

PROPETRO**JOB SUMMARY****TICKER NUMBER: KC-299****CEMENTING - ROCKY MOUNTAIN DIVISION**

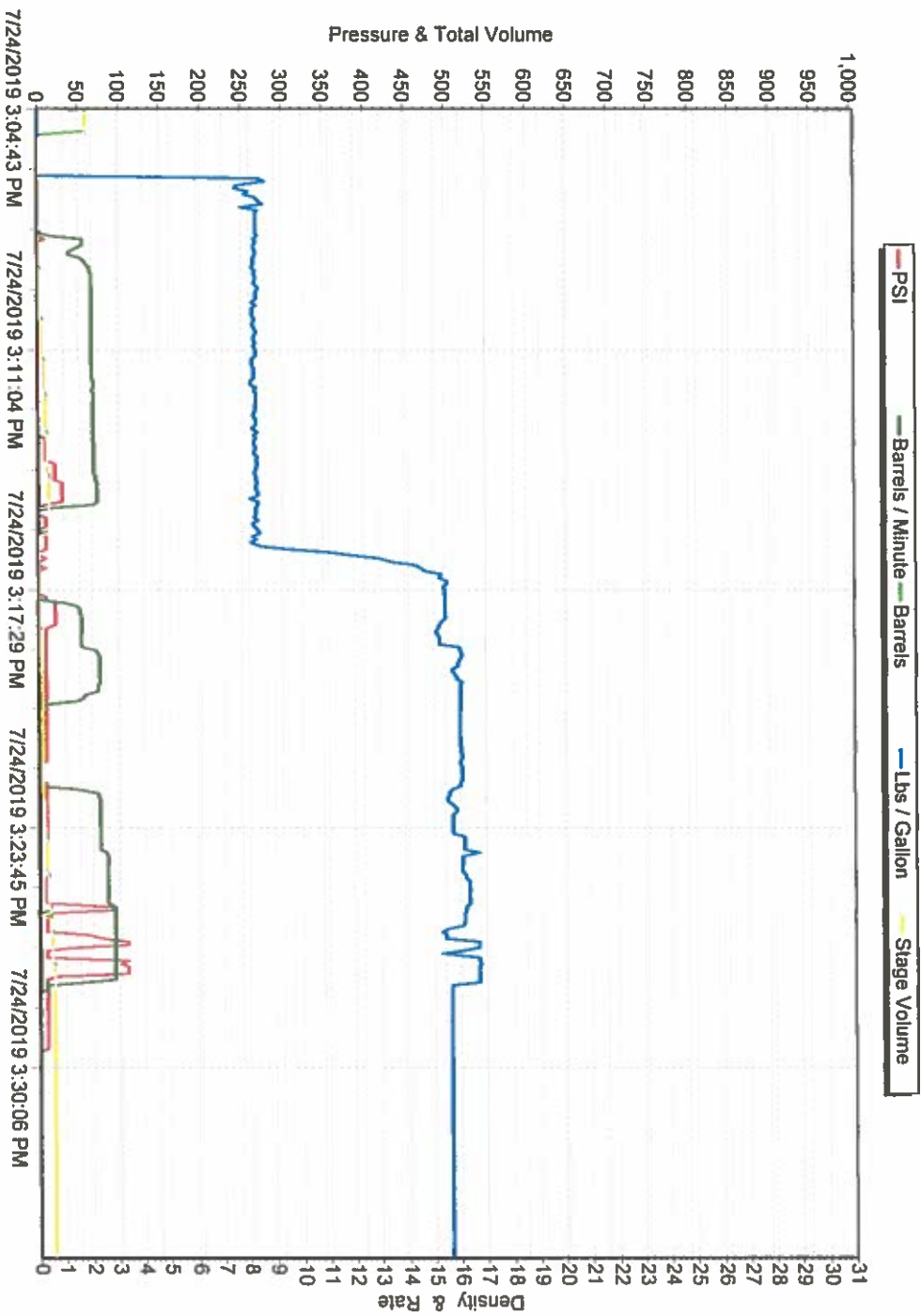
P.O. BOX 827 - VERNAL UT, 84078 - (435) 789-7407

COMPANY NAME: LOCIN OIL CORPORATION**DATE: 7/24/2019****COUNTY: RIO BLANCO****LEASE NAME: FORK UNT 9-10-2-2****RIG NO: N/A****JOB TYPE: PTA/TOP OUT**

DESCRIPTION	WGT/GRADE	THREAD	DEPTH FROM	DEPTH TO
SURFACE CSG SIZE: 8 5/8	N/A		0	N/A
INTER CSG SIZE:				
PROD CSG SIZE: 5 1/2	15.5		0	275'
LINER CSG SIZE:				
TBG OR DP SIZE:				
MATERIALS FURNISHED	SACKS	SLURRY WT PPG	SLURRY YIELD FT3	WATER GAL/SK
PREM CMT CLASS (G)	117	15.8	1.15	5

EQUIPMENT:1372/69/66**PERSONELL: KARL C/ROYCE H/RYAN C/WYATT****NOTES: PUMP 117 SKS BAKESIDE KEPT FALLING LEFT CMT RIG CREW SAID THEY TOP OFF IN MORNING****OPERATOR: KARL CHAPMAN****ACCEPTED AND APPROVED BY:**

LOCIN OIL



PROPETRO

TOPIC: SAFTY MEETING/ LOCIN OIL

DATE: 7/24/2019

INSTRUCTOR/SUPERVISOR: KARL CHAPMAN

USE HELP PROGRAM HAND/EYE/LINE OF FIRE/PLACEMENT OF FEET
MUSTER AREA MOUTH OF LOC
WATCH OUT FOR ALL WILDLIFE & WEATHER
WATCH FOR PINCH POINTS
POINTS TO REMEMBER: Wear proper PPE, check for hazards
Hand/foot placements, watch slips/trips/falls, fire extinguishers out
Communicate, work in teams, be mindful of overhead loads
Stay clear of iron & hoses during job
Right to stop work at any time
Check equipment placement
REMEMBER - All ProPetro Services employees are empowered to work safely. If you think a condition is unsafe, protect it, report it, assist in correcting it, or use your expertise to provide a better and safer way.
EMPLOYEE SUGGESTIONS:
Use spotter while parking on location, road conditions
Drive the speed limit, stay in convoy out to location
Watch out for snakes & spiders
Use tag line, proper tools

EMPLOYEES ATTENDING:

NAME	SIGNATURE	NAME	SIGNATURE
Karl			
Ryan			