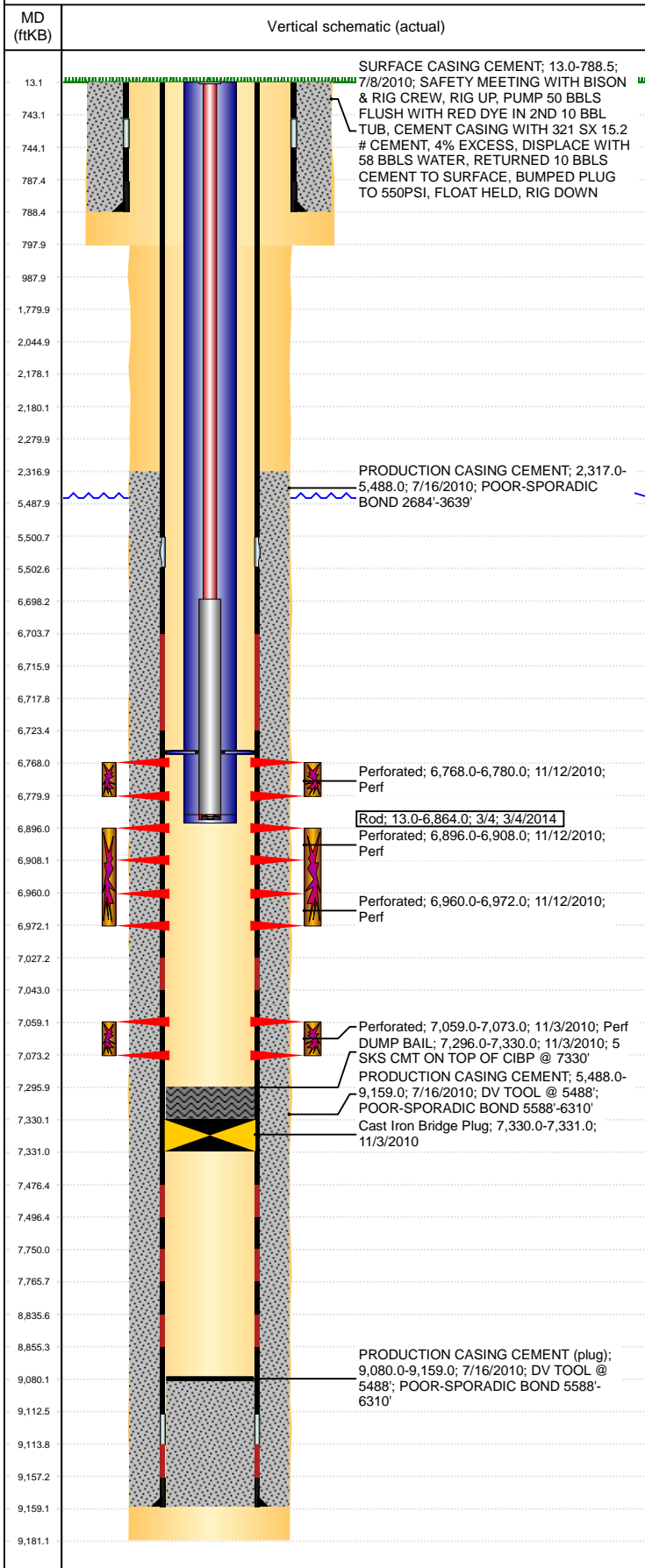


Well Name: FURROW USX AB15-05P

VERTICAL, ORIGINAL HOLE, 8/23/2019 1:55:48 PM



Well Header									
API 05-123-31540		Business Unit DJ BASIN			District 15		Well Config VERTICAL		
KB - GL / MSL (ft... 13.00		Spud Date 7/7/2010		P & A Date		Well Production Status PR			SoRT No
Comment									
Surface Location (Congressional)									
Qtr 3 SW	Qtr 4 NW	Section 15	Twnshp 7	Twnsh... N	Range 64	Rng E/... W	Actual Latitude (°) 40.57486789	Actual Longitude (°) -104.54297799	
Wellbore Sections									
Section Des			Size (in)			Act Top, MD (ftKB)		Act Btm, MD (ftKB)	
SURFACE			13 1/2			13		798	
PRODUCTION			8 3/4			798		9,181	
Casing Strings									
Csg Des			Run Date		OD (in)	Wt/Len (lb/ft)	Grade	Top, MD (ftKB)	MD (ftKB)
Surface			7/8/2010		9 5/8	36.00	J-55	13.0	788.5
Production			7/16/2010		5 1/2	17.00	L-80	13.0	9,159.0
Cement									
Des					Start Date		Top (ftKB)		Btm (ftKB)
SURFACE CASING CEMENT					7/8/2010		13.0		788.5
PRODUCTION CASING CEMENT					7/16/2010		2,317.0		5,488.0
PRODUCTION CASING CEMENT					7/16/2010		5,488.0		9,159.0
DUMP BAIL					11/3/2010		7,296.0		7,330.0
Zone Statuses									
Zone Name		Status Date	Status	Fluid Type	Job			Prod Method	
NIOBRARA		12/17/2010	PR		DRILLING/COMPLETION - ORIGINAL, 7/6/2010...				
CODELL		12/17/2010	PR		DRILLING/COMPLETION - ORIGINAL, 7/6/2010...				
LYONS		11/3/2010	AB		DRILLING/COMPLETION - ORIGINAL, 7/6/2010...				
Perforation Data									
Linked Zone			Bnch/Stg	Entered Shot Total	Top (ftKB)		Btm (ftKB)		Date
NIOBRARA, ORIGINAL HOLE			A	24	6,768.00		6,780.00		11/12/2010
NIOBRARA, ORIGINAL HOLE			B	24	6,896.00		6,908.00		11/12/2010
NIOBRARA, ORIGINAL HOLE			C	24	6,960.00		6,972.00		11/12/2010
CODELL, ORIGINAL HOLE				56	7,059.00		7,073.00		11/3/2010
Stimulation Intervals									
Zone				Start Date		Top (ftKB)		Btm (ftKB)	
NIOBRARA, ORIGINAL HOLE				11/12/2010		6,768.0		6,780.0	
NIOBRARA, ORIGINAL HOLE				11/12/2010		6,896.0		6,972.0	
CODELL, ORIGINAL HOLE				11/12/2010		7,059.0		7,073.0	
Other In Hole									
Run Date		Des				OD (in)	Top (ftKB)	Btm (ftKB)	
11/3/2010		Cast Iron Bridge Plug				4.99	7,330.0	7,331.0	
Logs									
Date		Type					Top, MD (ftKB)	Btm, MD (ftKB)	
7/15/2010		SPECTAL GAMMA RAY					789.0	7,550.0	
7/15/2010		SPECTRAL GAMMA RAY					789.0	7,550.0	
8/9/2010		CBL/CCL/GR					1,470.0	9,079.0	
Plug Back Total Depths									
Date		Type			Com				Depth (ftKB)
8/6/2010		FILL			DRILL OUT DV TOOL AND CLEAN DOWN TO 9098' KB.				9,098.0
8/9/2010		CEMENT PLUG			DEPTH LOGGER				9,080.0