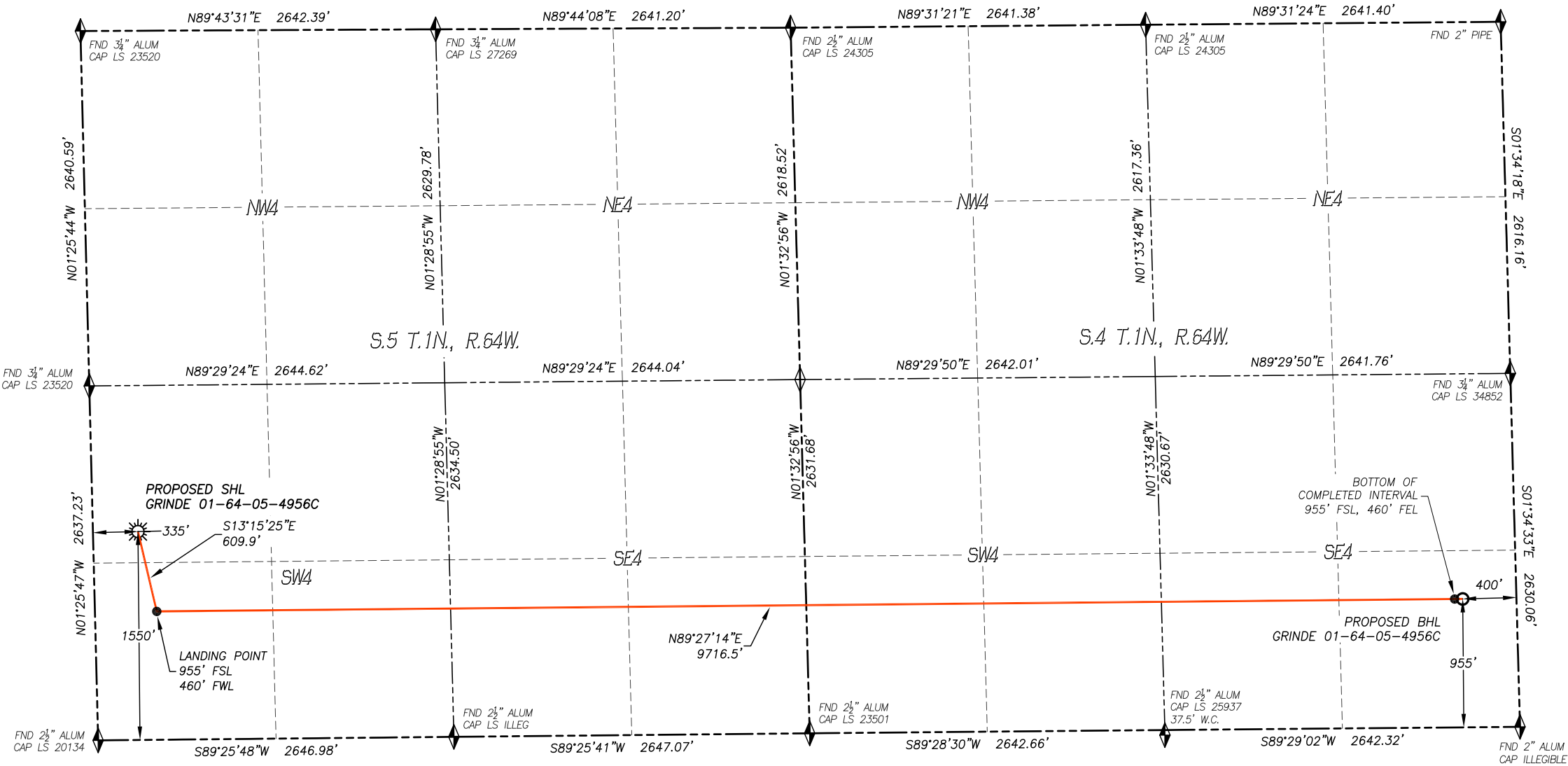


WELL LOCATION CERTIFICATE  
GRINDE 01-64-05-4956C

SECTION 5, TOWNSHIP 1 NORTH, RANGE 64 WEST OF THE 6TH P.M., WELD COUNTY



IN ACCORDANCE WITH A REQUEST FROM BILL BARRETT CORP., DALEY LAND SURVEYING, INC. HAS DETERMINED THE SURFACE LOCATION OF THE GRINDE 01-64-05-4956C WELL TO BE 1550' FSL, 335' FWL, AS MEASURED AT NINETY (90) DEGREES FROM THE SECTION LINES OF SECTION 5, TOWNSHIP 1 NORTH, RANGE 64 WEST AND THE BOTTOM HOLE LOCATION TO BE 955' FSL, 400' FEL, AS MEASURED AT NINETY (90) DEGREES FROM THE SECTION LINES OF SECTION 4, TOWNSHIP 1 NORTH, RANGE 64 WEST, OF THE 6TH PRINCIPAL MERIDIAN, WELD COUNTY, COLORADO.

I HEREBY STATE THAT THIS WELL LOCATION CERTIFICATE WAS PREPARED BY ME OR UNDER MY DIRECT SUPERVISION, THAT THE WORK WAS COMPLETED ON 11/2/2017 FOR AND ON BEHALF OF BILL BARRETT CORP., AND THAT THIS MAP DOES NOT REPRESENT A BOUNDARY SURVEY, IT IS NOT A LAND SURVEY PLAT OR AN IMPROVEMENT SURVEY PLAT AND IT IS NOT TO BE RELIED UPON FOR THE ESTABLISHMENT OF FENCE, BUILDING OR OTHER FUTURE IMPROVEMENT LINES.

- NOTES:**
- 1) BEARINGS FOR THIS MAP ARE ASSUMED AND BASED UPON GPS OBSERVATIONS MADE BETWEEN MONUMENTS LOCATED AT THE NORTH QUARTER CORNER AND NORTHEAST CORNER OF SECTION 5, T.1N., R.64W.
  - 2) HORIZONTAL DATUM IS NAD83.
  - 3) VERTICAL DATUM IS NAVD88 AND ORIGINATES FROM THE LOCAL C.O.R.S. NETWORK, UTILIZING THE GEOID12A MODEL.
  - 4) SEE LOCATION DRAWING FOR VISIBLE IMPROVEMENTS WITHIN 500' OF PROPOSED DISTURBED AREA.
  - 5) SURFACE USE: AGRICULTURAL.
  - 6) INST. OPERATOR: SCOTT ESTABROOKS.

**NEAREST CULTURAL ITEMS:**

BUILDING:	409'± SW
BUILDING UNIT:	684'± SW
HIGH OCC. BLD. UNIT:	5280'±
DES. OUTSIDE ACTIVITY AREA:	5280'±
PUBLIC ROAD:	322'± W
ABOVE GROUND UTILITY:	309'± W
RAILROAD:	5280'±
PROPERTY LINE:	335'± W

**NAD 83 LATITUDE AND LONGITUDE**

**SURFACE LOCATION:**

LATITUDE: N40.07750°  
LONGITUDE: W104.58306°  
ELEV: 5030'  
PDOP: 1.3  
QTR/QTR: NW4/SW4

**LANDING POINT:**

LATITUDE: N40.07587°  
LONGITUDE: W104.58258°  
ELEV: 5030'  
PDOP: 1.3  
QTR/QTR: NW4/SW4

**BOTTOM COMPLETED INT.:**

LATITUDE: N40.07584°  
LONGITUDE: W104.54809°

**BOTTOM HOLE:**

LATITUDE: N40.07584°  
LONGITUDE: W104.54787°

**LEGEND**

- FOUND MONUMENT AS DESCRIBED
- PROPOSED WELL
- EXISTING WELL
- BOTTOM HOLE
- ABANDONED WELL
- CALCULATED POSITION

