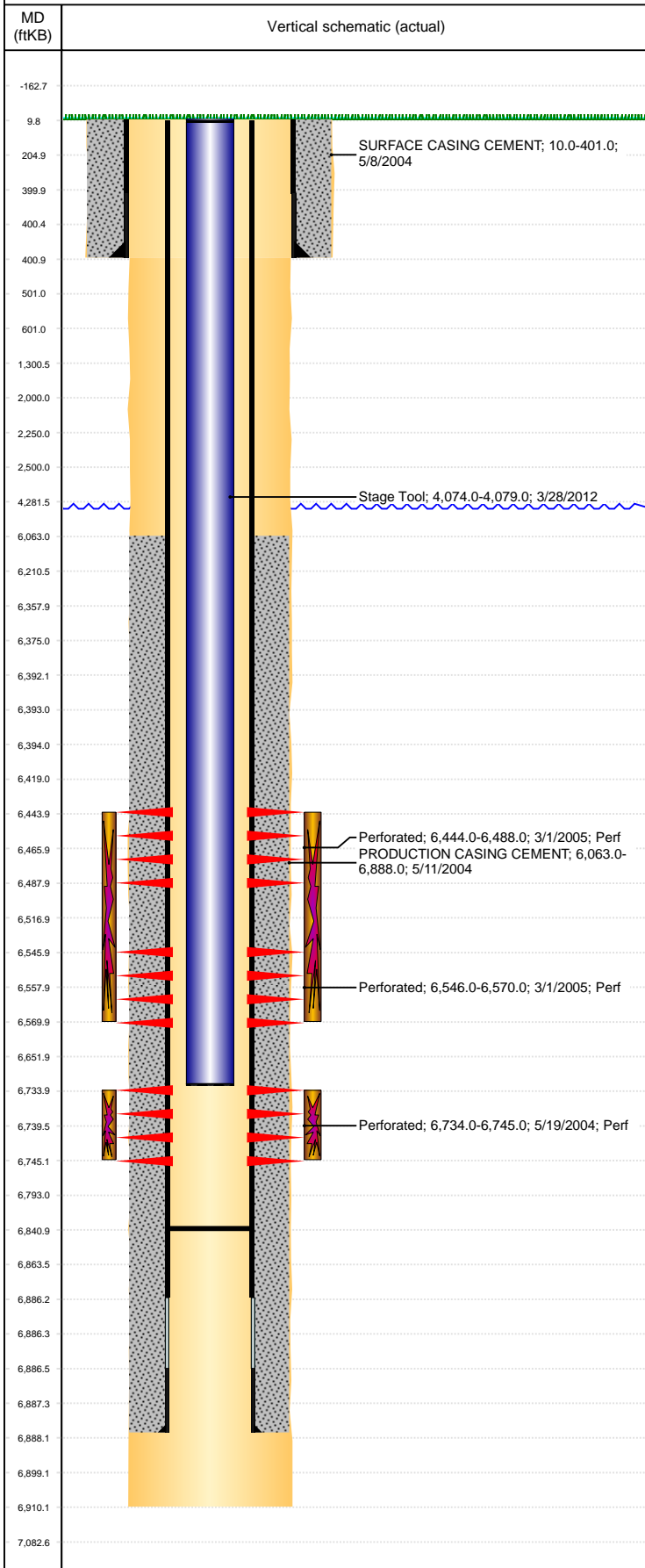


Well Name: TREBOR B12-17

VERTICAL, ORIGINAL HOLE, 8/20/2019 11:19:26 AM



Well Header									
API 05-123-22159		Business Unit DJ BASIN			District 15		Well Config VERTICAL		
KB - GL / MSL (ft... 10.00		Spud Date 5/7/2004		P & A Date		Well Production Status SI			SoRT No
Comment									
Surface Location (Congressional)									
Qtr 3 NW	Qtr 4 NE	Section 12	Twnshp 5	Twnsh... N	Range 64	Rng E/... W	Actual Latitude (°) 40.41819667	Actual Longitude (°) -104.49380811	
Wellbore Sections									
Section Des			Size (in)			Act Top, MD (ftKB)		Act Btm, MD (ftKB)	
SURFACE			12 1/4			10		401	
PRODUCTION			7 7/8			401		6,910	
Casing Strings									
Csg Des			Run Date		OD (in)	Wt/Len (lb/ft)	Grade	Top, MD (ftKB)	MD (ftKB)
Surface Casing			5/8/2004		8 5/8	24.00	J-55	10.0	401.0
Production			5/11/2004		4 1/2	11.60	M-80	10.0	6,888.0
Cement									
Des					Start Date		Top (ftKB)		Btm (ftKB)
SURFACE CASING CEMENT					5/8/2004		10.0		401.0
PRODUCTION CASING CEMENT					5/11/2004		6,063.0		6,888.0
Zone Statuses									
Zone Name	Status Date	Status	Fluid Type	Job				Prod Method	
CODELL	2/28/2005	SI		RECOMPLETION, 2/25/2005 00:00					
CODELL	4/6/2005	PR		RECOMPLETION, 2/25/2005 00:00					
NIOBRARA	3/17/2005	PR		RECOMPLETION, 2/25/2005 00:00					
NIOBRARA	4/6/2005	PR		RECOMPLETION, 2/25/2005 00:00					
Perforation Data									
Linked Zone			Bnch/Stg	Entered Shot Total	Top (ftKB)		Btm (ftKB)		Date
NIOBRARA, ORIGINAL HOLE				144	6,444.00		6,488.00		3/1/2005
NIOBRARA, ORIGINAL HOLE				144	6,546.00		6,570.00		3/1/2005
CODELL, ORIGINAL HOLE				44	6,734.00		6,745.00		5/19/2004
Stimulation Intervals									
Zone				Start Date		Top (ftKB)		Btm (ftKB)	
NIOBRARA, ORIGINAL HOLE				3/16/2005		6,444.0		6,570.0	
CODELL, ORIGINAL HOLE				5/27/2004		6,734.0		6,745.0	
Other In Hole									
Run Date		Des				OD (in)	Top (ftKB)		Btm (ftKB)
Logs									
Date		Type				Top, MD (ftKB)		Btm, MD (ftKB)	
5/11/2004		COMPENSATED DENSITY				3,400.0		6,881.0	
5/11/2004		INDUCTION				3,400.0		6,881.0	
5/19/2004		CBL/CCL/GR				5,830.0		6,864.0	
2/18/2013		GYRO				10.0		6,700.0	
Plug Back Total Depths									
Date		Type		Com				Depth (ftKB)	
5/11/2006		LATCH DOWN COLLAR		LATCH DOWN COLLAR				6,870.0	
5/23/2013		FILL		MOST RECENT TAG				6,841.0	