

July 31, 2019

Lindsey Rider  
EHS Lead  
Caerus Oil and Gas  
143 Diamond Avenue  
Parachute, CO 81635

RE: SG36SE Well Pad Final Reclamation Status

Dear Lindsey,

Per your request, WestWater biologists have completed vegetation monitoring for the above referenced reclaimed location. We utilized the Bureau of Land Management's (BLM) Assessment, Inventory, and Monitoring (AIM) strategy for data collection and the resulting data has been entered into the Database for Inventory, Monitoring and Assessment (DIMA). In addition to monitoring the reclaimed area we selected and inventoried a reference site for this location.

Attached you will find the results summary and photos of the reclaim and reference areas. Based on the information we collected this year and our understanding of BLM and Colorado Oil & Gas Conservation Commission (COGCC) final reclamation requirements this site meets the 80% reference criteria for Final Abandonment Notice.

If there is any additional information we can provide or clarify please contact me.

Sincerely,



Environmental Scientist/Project Manager

Percent Cover Summary Table		
	Reference Site	Reclaim Site
% Foliar Cover	86.0	120.0
% Basal Cover	0.0	0.0
% Bare ground	22.0	0.0
% Desirable Foliar Cover	36.0	30.0
% Desirable of Reference Site		83.3
80% Desirable of Reference?	Site meets 80% of reference criteria.	
*Percent Foliar Cover represents all points hit along transect of specific species including lower canopy layers; thus, in some cases percent foliar cover can exceed 100%.		



Reclaim Transect 1



Reclaim Transect 2



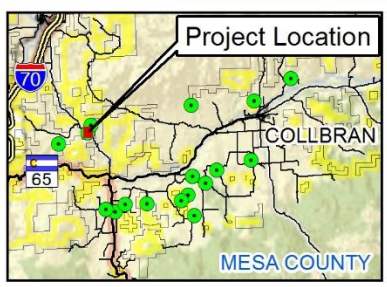
Reference Transect

Final Reclamation Site Percent Foliar Cover by Species		
Caerus Oil and Gas		
Location:	SG36SE	
Date:	7/22/2019	
Plot:	Final Reclamation	
Scientific Name	Common Name	Foliar Cover
Graminoids		
Bromus tectorum	cheatgrass	53.0
Eremopyrum triticeum	annual wheatgrass	1.0
Poa bulbosa	bulbous bluegrass	5.0
Grass cover subtotal		59.0
Desirable grass cover subtotal		0.0
Forbs/Succulents		
Bassia scoparia	burningbush	29.0
<b>Grindelia squarrosa</b>	<b>curlycup gumweed</b>	<b>2.0</b>
Lactuca serriola	prickly lettuce	1.0
Lepidium perfoliatum	clasping pepperweed	1.0
<b>Melilotus officinalis</b>	<b>sweetclover</b>	<b>3.0</b>
Forb cover subtotal		36.0
Desirable forb cover subtotal		5
Shrubs		
<b>Ericameria nauseosa</b>	<b>rubber rabbitbrush</b>	<b>25.0</b>
Shrub cover subtotal		25.0
Desirable shrub cover subtotal		25.0
Trees		
Desirable trees cover subtotal		0

**Bold = Desirable Species**

Final Reclamation Site Percent Foliar Cover by Species		
Caerus Oil and Gas		
Location:	SG36SE	
Date:	7/22/2019	
Plot:	Reference	
Scientific Name	Common Name	Foliar Cover
Graminoids		
Agropyron cristatum	crested wheatgrass	2.0
Bromus tectorum	cheatgrass	38.0
Eremopyrum triticeum	annual wheatgrass	4.0
Pleuraphis jamesii	James' galleta	2.0
Poa secunda	Sandberg bluegrass	4.0
Grass cover subtotal		50.0
Desirable grass cover subtotal		12.0
Forbs/Succulents		
Aletes acaulis	stemless Indian parsley	2.0
Alyssum desertorum	desert madwort	6.0
Ceratocephala testiculata	curveseed butterwort	4.0
Lepidium perfoliatum	clasping pepperweed	2.0
Forb cover subtotal		14.0
Desirable forb cover subtotal		2
Shrubs		
Artemisia tridentata Nutt. var. wyomingensis (Beetle & Young) S.L. Welsh		22.0
Shrub cover subtotal		22.0
Desirable shrub cover subtotal		22.0
Trees		
Desirable trees cover subtotal		
Bold = Desirable Species		





### Legend

- Pad Transect
- Reference Transect
- Pad Status**
- Final Reclamation Monitoring
- Interim Reclamation Monitoring
- BLM Field Office

**SG36SE**  
**Caerus Oil & Gas**  
**BLM**

**Grand Junction Field Office**  
**Vegetation Monitoring 2019**

**WestWater Engineering**  
 Consulting Engineers & Scientists

0 200 400  
 Feet