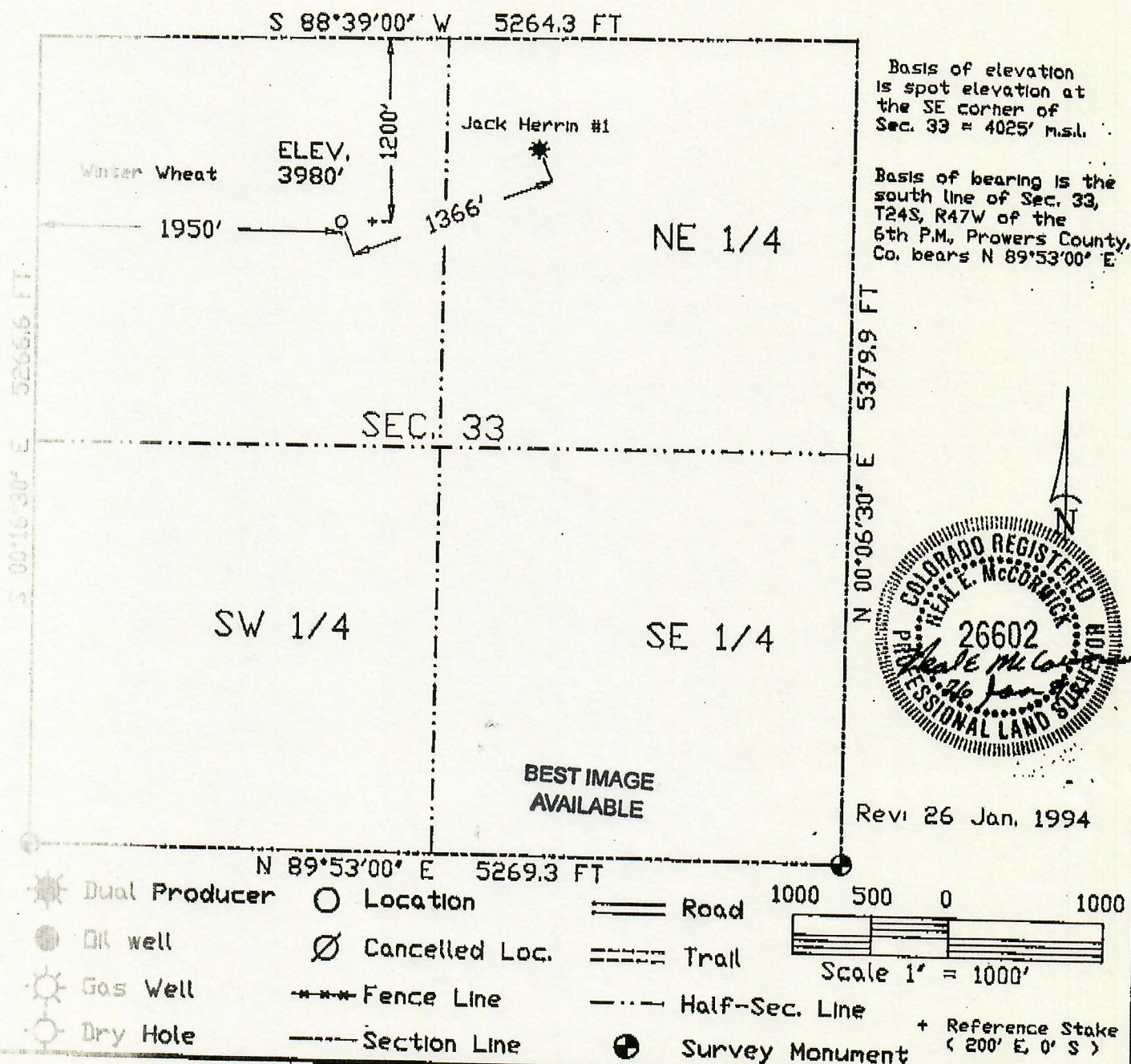




The accompanying plat is an accurate representation showing the location of a proposed well. This location may be described as a point 1200 feet South of the North line, and 1950 feet East of the West line of Section 33, Township 24 South, Range 47 West of the 6th P.M., Prowers County, Colorado. The surface elevation at this point is 3980 feet m.s.l.  
 Note: This is not a land survey plat.  
 There are no visible improvements within 200 feet of the location.



GREAT PLAINS  
SURVEYING

JACK HERRIN #3

NE 1/4 NW 1/4 SEC. 33, T24S, R47W

FORCENERGY GAS EXPLORATION CO.

PROWERS COUNTY, CO.

21 DECEMBER 1993

P.O. Box 296  
Lafayette, CO 80734

Phone 303-854-3602  
Fax 303-854-2926