

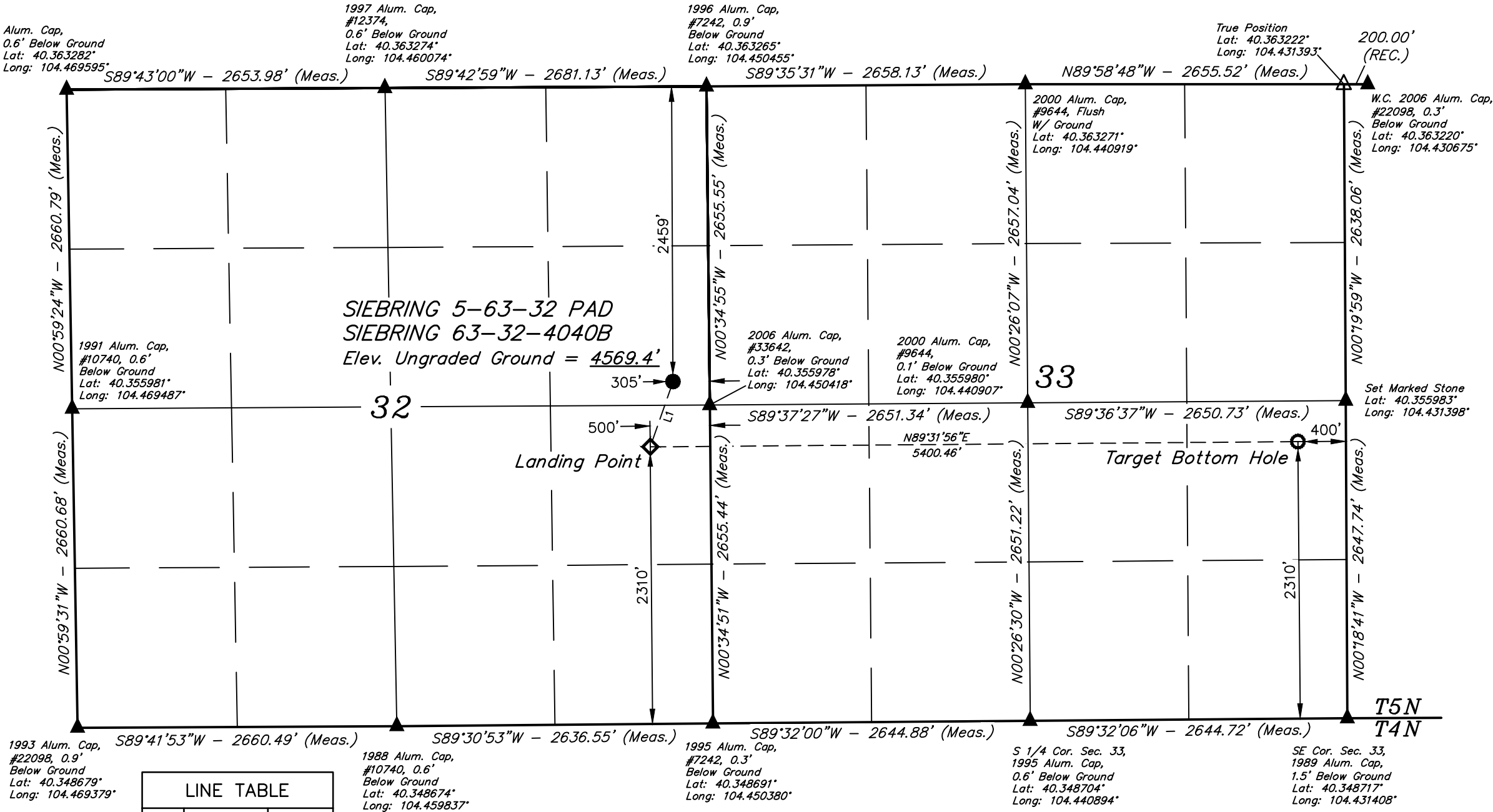
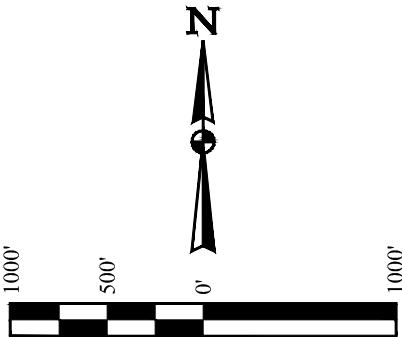
T5N, R63W, 6th P.M.

HIGHPOINT OPERATING CORPORATION

SIEBRING 5-63-32 PAD
SIEBRING 63-32-4040B
SE 1/4 NE 1/4, SECTION 32, T5N, R63W, 6th P.M.
WELD COUNTY, COLORADO

BASIS OF BEARINGS
TRANSVERSE MERCATOR PROJECTION WITH
A CENTRAL MERIDIAN OF W105°00'00".

BASIS OF ELEVATION
OPUS SOLUTION GENERATED NAVD 88



1993 Alum. Cap,
#22098, 0.9'
Below Ground
Lat: 40.348679°
Long: 104.469379°

1988 Alum. Cap,
#10740, 0.6'
Below Ground
Lat: 40.348674°
Long: 104.459837°

1995 Alum. Cap,
#7242, 0.3'
Below Ground
Lat: 40.348691°
Long: 104.450380°

S 1/4 Cor. Sec. 33,
1995 Alum. Cap,
0.6' Below Ground
Lat: 40.348704°
Long: 104.440894°

SE Cor. Sec. 33,
1989 Alum. Cap,
1.5' Below Ground
Lat: 40.348717°
Long: 104.431408°

LINE TABLE		
LINE	DIRECTION	LENGTH
L1	S19°13'30"W	576.93'

- LEGEND:
- = PROPOSED WELLHEAD.
 - ◆ = LANDING POINT.
 - = TARGET BOTTOM HOLE.
 - ▲ = SECTION CORNERS LOCATED. (NAD 83)
 - △ = SECTION CORNERS RE-ESTABLISHED.
(Not Set on Ground.) (NAD 83)

NOTE:
DISTANCES REFERENCED ON PLAT TO
SECTION LINES ARE PERPENDICULAR.

NAD 83 (SURFACE LOCATION)	NAD 83 (LANDING POINT)	NAD 83 (TARGET BOTTOM HOLE)
LATITUDE = 40°21'23.47" (40.356518°)	LATITUDE = 40°21'18.10" (40.355027°)	LATITUDE = 40°21'18.19" (40.355054°)
LONGITUDE = 104°27'05.45" (104.451513°)	LONGITUDE = 104°27'07.94" (104.452206°)	LONGITUDE = 104°25'58.20" (104.432834°)
NAD 27 (SURFACE LOCATION)	NAD 27 (LANDING POINT)	NAD 27 (TARGET BOTTOM HOLE)
LATITUDE = 40°21'23.53" (40.356537°)	LATITUDE = 40°21'18.16" (40.355045°)	LATITUDE = 40°21'18.26" (40.355073°)
LONGITUDE = 104°27'03.61" (104.451002°)	LONGITUDE = 104°27'06.10" (104.451695°)	LONGITUDE = 104°25'56.37" (104.432324°)
STATE PLANE NAD 83 (CO. NORTH)	STATE PLANE NAD 83 (CO. NORTH)	STATE PLANE NAD 83 (CO. NORTH)
N: 1374447.65' E: 3292195.05'	N: 1373902.00' E: 3292008.21'	N: 1373976.44' E: 3297406.54'
STATE PLANE NAD 27 (CO. NORTH)	STATE PLANE NAD 27 (CO. NORTH)	STATE PLANE NAD 27 (CO. NORTH)
N: 374449.56' E: 2292345.05'	N: 373903.92' E: 2292158.21'	N: 373978.37' E: 2297556.55'

PDOP = 1.3

REV: 1 03-20-19 J.U. (UPDATE PAD NAME)



UELS, LLC
Corporate Office * 85 South 200 East
Vernal, UT 84078 * (435) 789-1017

SURVEYED BY	RYAN WILLIAMS, D.E.	02-26-19	SCALE
DRAWN BY	J.U.	03-01-19	1" = 1000'

WELL LOCATION PLAT

CERTIFICATE
THIS IS TO CERTIFY THAT THE ABOVE PLAT WAS PREPARED FROM FIELD
NOTES OF ACTUAL SURVEYS MADE BY ME OR UNDER MY SUPERVISION
AND THAT THE SAME ARE TRUE AND CORRECT TO THE BEST OF MY
KNOWLEDGE AND BELIEF.

REGISTERED LAND SURVEYOR
REGISTRATION NO. 28285
STATE OF COLORADO
03-20-19