



June 18, 2019

Mr. Jeff Robbins, Director
Colorado Oil and Gas Conservation Commission
The Chancery Building
1120 Lincoln Street, Suite 801
Denver, CO 80203

RE: Siebring 63-32-2525BS
Township 5 North, Range 63 West, 6th P.M.
Section 32: SE/4NE/4 & NE/4SE/4
Section 33: N/2S/2 & S/2N/2
Weld County, Colorado

Proposed Wellbore Unit (Containing 400 Acres, more or less):

Dear Mr. Jeff Robbins:

HighPoint is planning to drill the captioned boundary well in accordance with the provisions of COGCC 318A.e.

HighPoint's wellbore spacing unit consists of Section 32: SE/4/NE/4 & NE/4/SE/4, Section 33: N/2 S/2 & S/2N/2, creating the above referenced spacing unit in which we will target the Niobrara formation. I certify that all of the owners within the proposed wellbore spacing unit were noticed and no objections were received.

Enclosed is a copy of the following document to assist you in your review and approval of HighPoint's proposed changes for the captioned well.

- Plat illustrating the proposed wellbore spacing unit on existing location plat

Thank you for your attention to the enclosed. HighPoint's respectfully requests that the COGCC review the enclosed information and approve the proposed changes for the captioned well.

If you have any questions, please contact me at 303-312-8145.

HIGHPOINT OPERATING CORPORATION

A handwritten signature in blue ink that reads "Delores Montoya".

Delores Montoya
Sr. Regulatory Analyst

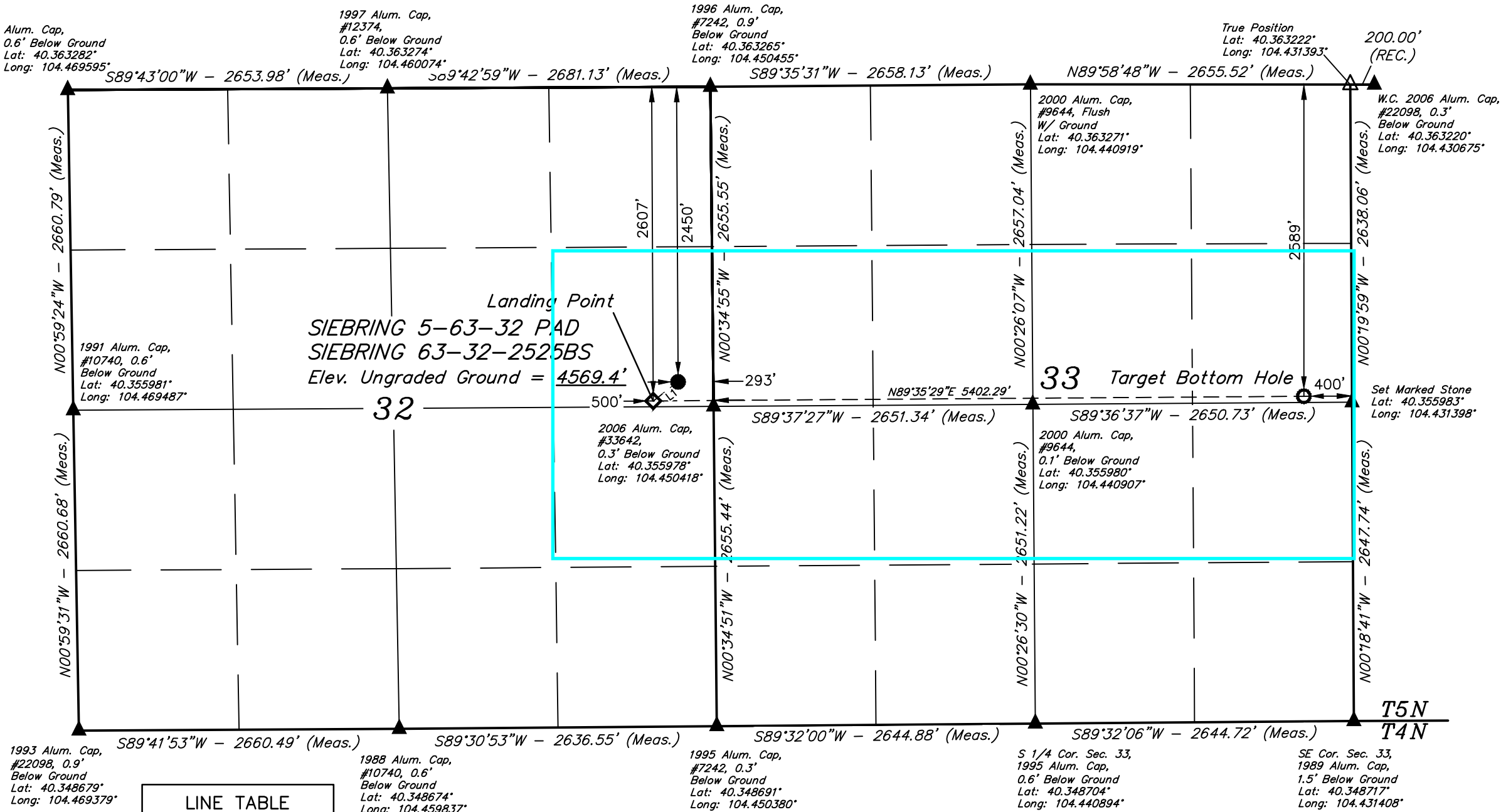
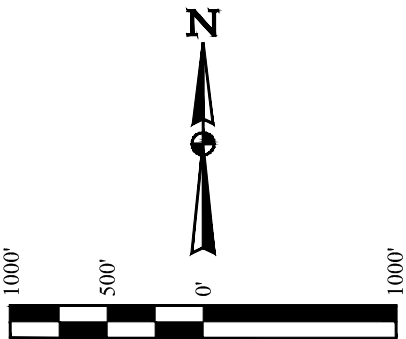
T5N, R63W, 6th P.M.

HIGHPOINT OPERATING CORPORATION

SIEBRING 5-63-32 PAD
SIEBRING 63-32-2525BS
SE 1/4 NE 1/4, SECTION 32, T5N, R63W, 6th P.M.
WELD COUNTY, COLORADO

BASIS OF BEARINGS
TRANSVERSE MERCATOR PROJECTION WITH
A CENTRAL MERIDIAN OF W105°00'00".

BASIS OF ELEVATION
OPUS SOLUTION GENERATED NAVD 88



LINE TABLE		
LINE	DIRECTION	LENGTH
L1	S52°27'56"W	259.62'

- LEGEND:
- = PROPOSED WELLHEAD.
 - ◆ = LANDING POINT.
 - = TARGET BOTTOM HOLE.
 - ▲ = SECTION CORNERS LOCATED. (NAD 83)
 - △ = SECTION CORNERS RE-ESTABLISHED. (Not Set on Ground.) (NAD 83)

NOTE:
DISTANCES REFERENCED ON PLAT TO
SECTION LINES ARE PERPENDICULAR.

NAD 83 (SURFACE LOCATION)	NAD 83 (LANDING POINT)	NAD 83 (TARGET BOTTOM HOLE)
LATITUDE = 40°21'23.55" (40.356543°)	LATITUDE = 40°21'22.00" (40.356112°)	LATITUDE = 40°21'22.05" (40.356125°)
LONGITUDE = 104°27'05.29" (104.451470°)	LONGITUDE = 104°27'07.96" (104.452212°)	LONGITUDE = 104°25'58.20" (104.432833°)
NAD 27 (SURFACE LOCATION)	NAD 27 (LANDING POINT)	NAD 27 (TARGET BOTTOM HOLE)
LATITUDE = 40°21'23.62" (40.356562°)	LATITUDE = 40°21'22.07" (40.356131°)	LATITUDE = 40°21'22.12" (40.356144°)
LONGITUDE = 104°27'03.45" (104.450959°)	LONGITUDE = 104°27'06.12" (104.451701°)	LONGITUDE = 104°25'56.36" (104.432323°)
STATE PLANE NAD 83 (CO. NORTH)	STATE PLANE NAD 83 (CO. NORTH)	STATE PLANE NAD 83 (CO. NORTH)
N: 1374456.82' E: 3292206.90'	N: 1374297.54' E: 3292001.97'	N: 1374366.42' E: 3297402.21'
STATE PLANE NAD 27 (CO. NORTH)	STATE PLANE NAD 27 (CO. NORTH)	STATE PLANE NAD 27 (CO. NORTH)
N: 374458.73' E: 2292356.89'	N: 374299.45' E: 2292151.97'	N: 374368.35' E: 2297552.22'

PDOP = 1.4

REV: 1 03-20-19 J.U. (UPDATE PAD NAME)

CERTIFICATE
THIS IS TO CERTIFY THAT THE ABOVE PLAT WAS PREPARED FROM FIELD
NOTES OF ACTUAL SURVEYS MADE BY ME OR UNDER MY SUPERVISION
AND THAT THE SAME ARE TRUE AND CORRECT TO THE BEST OF MY
KNOWLEDGE AND BELIEF.
Ryan Williams
REGISTERED LAND SURVEYOR
REGISTRATION NO. 28285
STATE OF COLORADO
03-20-19



UELS, LLC
Corporate Office * 85 South 200 East
Vernal, UT 84078 * (435) 789-1017

SURVEYED BY	RYAN WILLIAMS, D.E.	02-26-19	SCALE
DRAWN BY	J.U.	03-01-19	1" = 1000'

WELL LOCATION PLAT