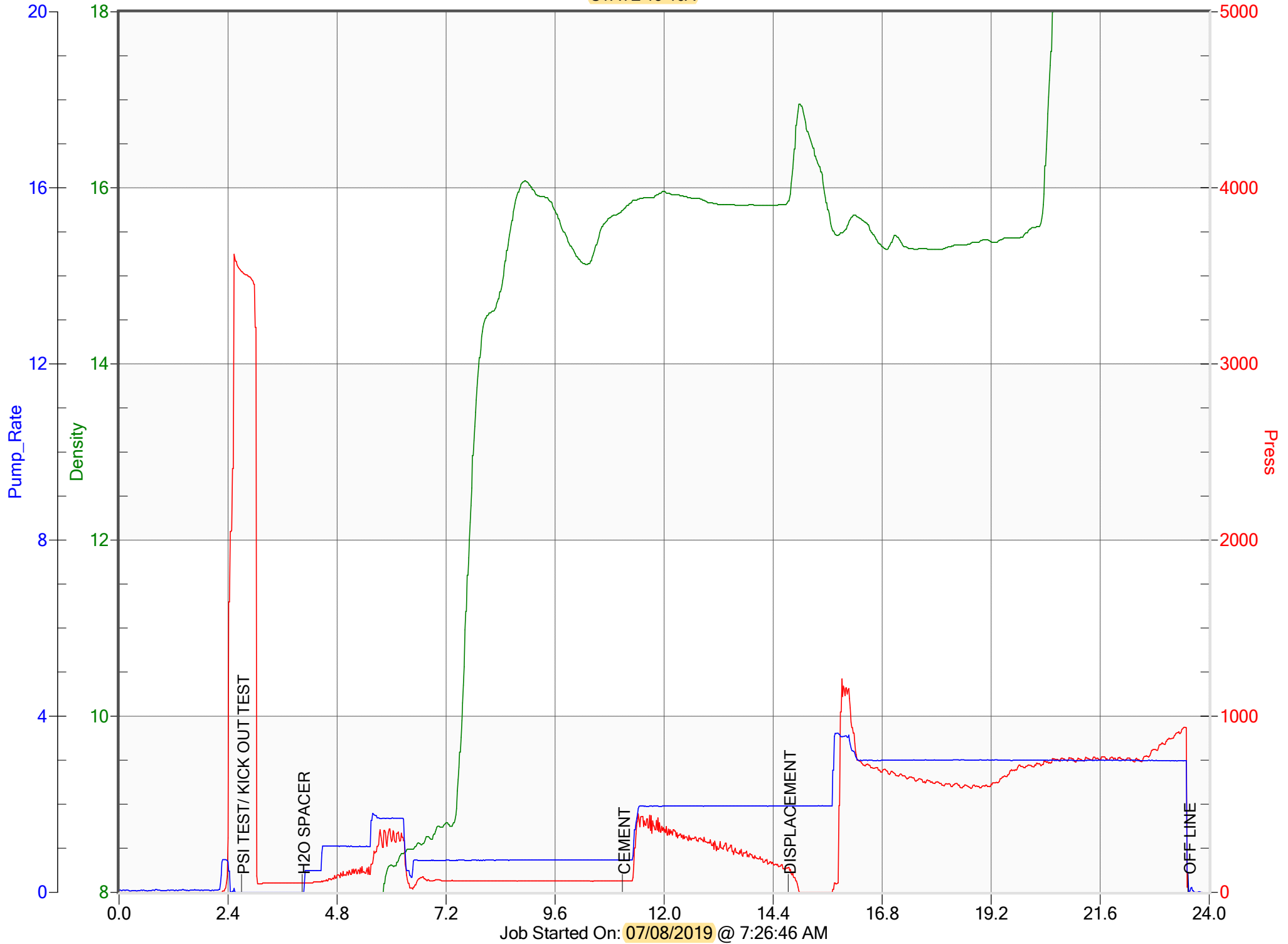


ANADARKO

STATE 15-16A





Service Order #: 74265

Date: 08-Jul-19

Well Name	Location	County	St	API#		
STATE 15-16A		WELD	CO	05-123-20354		
Formation	Cement Via	Type Of Service	Well Type	Age	AFE#	PO#
					2150478	

Customer: ANADARKO

Remarks: NIOBRARA BALANCE PLUG
COMMOND CMT W/ENHANCERS, 1.53 YIELD,
15.8 LBS/GAL
25 SKS, 6.8 BBLS
7025' - 6586'

Customer Rep: EDGAR

PH:

WELLBORE DATA				
Type	Size	Weight	Depth	Volume
Surface Casing:				
Production Casing:	4.500	11.6	7,025.0	
Intermediate:				
Drill Pipe:				
Tubing:	2.375	4.7	7,025.0	

Type	Size	Depth (Top)	Depth (Bot)	Volume
Liner:				
Open Hole:				

OTHER DATA		
BHT	Max PSI	Total Depth
	1,500	7,025.0

Packer or RetainerType / Depth:

Perf Depths:	#	Total
	0	0
	0	
	0	

TIME	PUMP RATES		DENSITY	PRESS	STG TOT	TOTAL	REMARKS
	WATER (gpm)	PUMP (bpm)	(lb/gal)	(psi)	(bbls)	(bbls)	
7:29	0	0.0	6.88	3,524	0.1	0.1	PSI TEST/ KICK OUT TEST
7:30	0	0.0	6.88	53	0.0	0.0	H2O SPACER
7:37	0	0.7	15.74	65	6.0	6.0	CEMENT
7:41	0	2.0	15.85	141	6.8	12.8	DISPLACEMENT
7:50	0	0.5	20.55	29	25.5	38.4	OFF LINE

Summary

Max Fl. Rate	Avg Fl. Rate	Max Psi	Avg Psi
2.0	1.9	3,623	369

Customer Acknowledgement:

Service Rating:

- ☐ Satisfactory
☐ Unsatisfactory

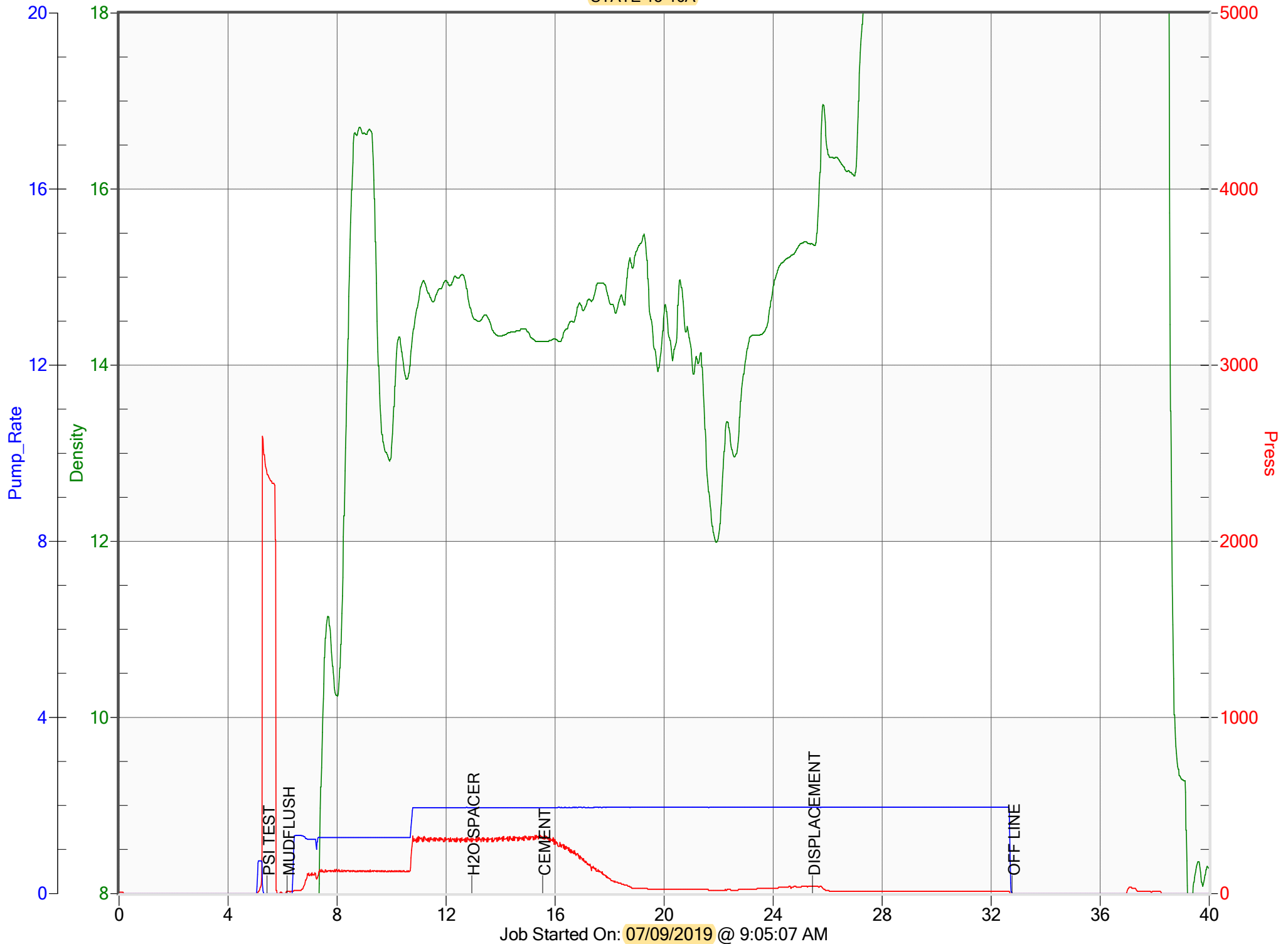
Cementer:

R.GARCIA

PRODUCTS USED

ANADARKO

STATE 15-16A





Service Order #: 74266

Date: 09-Jul-19

Well Name	Location	County	St	API#		
STATE 15-16A		WELD	CO	05-123-20354		
Formation	Cement Via	Type Of Service	Well Type	Age	AFE#	PO#
	TUBING	SQUEEZE		REWORK	2150478	

Customer:

Remarks:

SUSSEX SQUEEZE
COMMOND CMT W/ENHANCERS, 1.56 YIELD,
14 LBS/GAL
70 SKS, 19.4 BBLs
ESTIMATED TOC IN CASING 4365' - 4171'
EST TOC IN ANNULUS 4505'-4305'

Customer Rep: EDGAR

PH:

WELLBORE DATA				
Type	Size	Weight	Depth	Volume
Surface Casing:				
Production Casing:	4.500	11.6	4,305.0	
Intermediate:				
Drill Pipe:				
Tubing:	2.375	4.7	4,365.0	
Type	Size	Depth (Top)	Depth (Bot)	Volume
Liner:				
Open Hole:	7.875			

OTHER DATA		
BHT	Max PSI	Total Depth
	800	4,505.0

Packer or RetainerType / Depth:

RETAINER	4,365.0
----------	---------

Perf Depths:

Perf Depths:		#	Total
4,505.0	4,305.0	0	0
		0	
		0	

TIME	PUMP RATES		DENSITY	PRESS	STG TOT	TOTAL	REMARKS
	WATER (gpm)	PUMP (bpm)	(lb/gal)	(psi)	(bbls)	(bbls)	
9:10	0	0.0	6.88	2,382	0.1	0.1	PSI TEST
9:11	110	0.0	6.88	12	0.1	0.1	MUDFLUSH
9:18	0	2.0	14.59	292	10.0	10.0	H2O SPACER
9:20	0	2.0	14.27	322	5.0	15.1	CEMENT
9:30	0	2.0	15.37	42	19.4	34.5	DISPLACEMENT
9:37	0	0.0	18.60	0	13.8	48.7	OFF LINE
9:45	0	0.6	8.50	0	13.9	48.7	ANNOTATION
9:45	0	0.7	8.49	7	0.0	0.0	ANNOTATION
9:45	0	0.7	8.49	7	0.0	0.0	ANNOTATION

Summary

Max Fl. Rate	Avg Fl. Rate	Max Psi	Avg Psi
2.0	1.8	2,596	108

Customer Acknowledgement:

Service Rating:

- ☐ Satisfactory
☐ Unsatisfactory

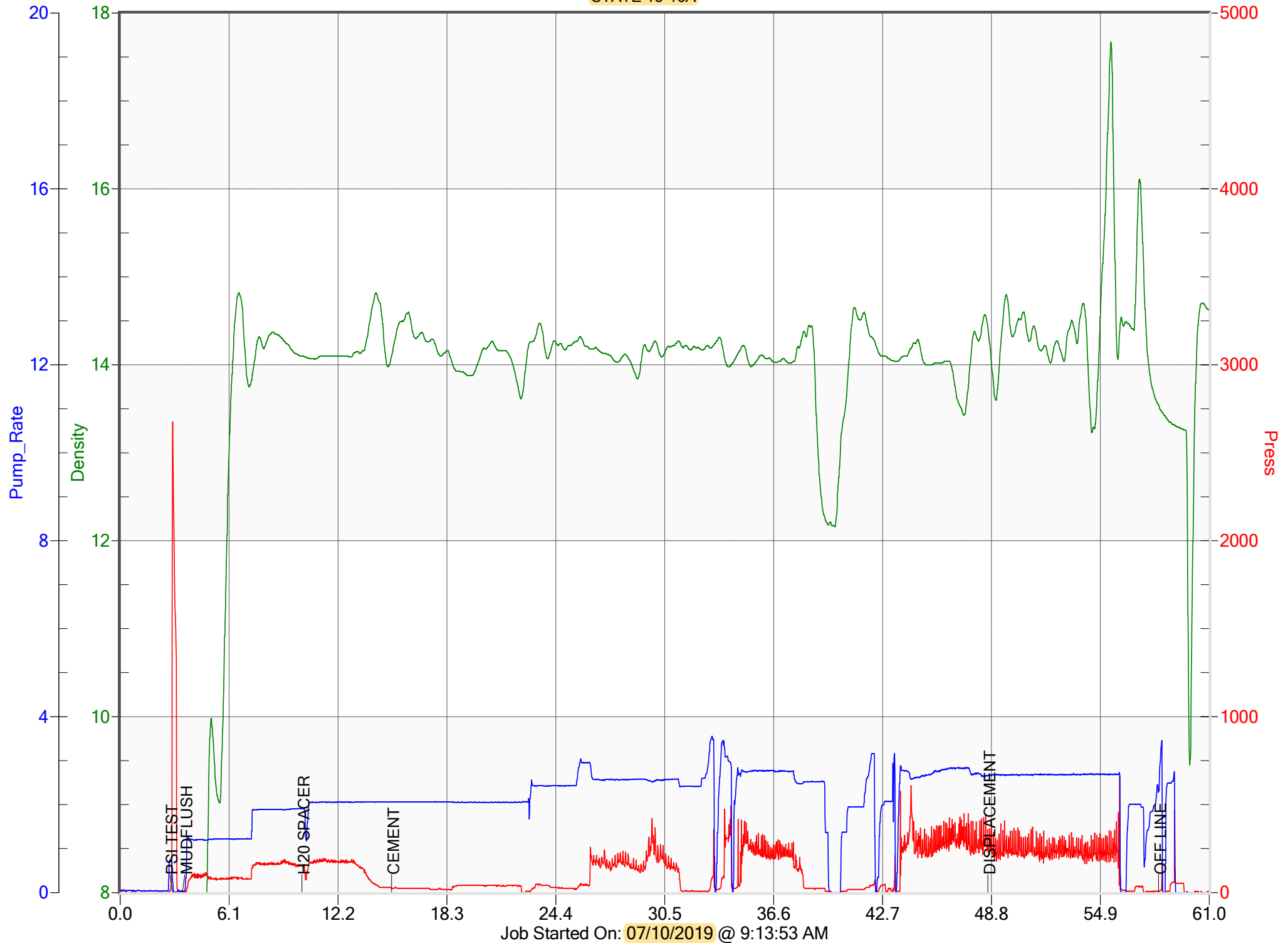
Cementer:

R GARCIA

PRODUCTS USED

ANADARKO

STATE 15-16A





Service Order #: 74268

Date: 10-Jul-19

Well Name	Location	County	St	API#		
STATE 15-16A		WELD	CO	051-232-0354		
Formation	Cement Via	Type Of Service	Well Type	Age	AFE#	PO#
	TUBING	PLUG		REWORK		

Customer:	ANADARKO	Remarks:	STUB PLUG COMMOND CMT W/ENHANCERS, 1.58 YIELD, 14 LBS/GAL 297 SKS , 83.6 BBLS TOC 1260' - 384'
Customer Rep:	EDGAR	PH:	

WELLBORE DATA				
Type	Size	Weight	Depth	Volume
Surface Casing:	8.625	24.0	584.0	
Production Casing:	4.500	11.6	1,160.0	
Intermediate:				
Drill Pipe:				
Tubing:	2.375	4.7	1,260.0	
Type	Size	Depth (Top)	Depth (Bot)	Volume
Liner:				
Open Hole:	7.875			

OTHER DATA		
BHT	Max PSI	Total Depth
	500	1,260.0

Packer or RetainerType / Depth:

--	--

Perf Depths:	#	Total
	0	0
	0	
	0	

TIME	PUMP RATES		DENSITY	PRESS	STG TOT	TOTAL	REMARKS
	WATER (gpm)	PUMP (bpm)	(lb/gal)	(psi)	(bbls)	(bbls)	
9:16	0	0.2	6.88	2,675	0.2	0.2	PSI TEST
9:17	0	0.0	6.88	7	0.2	0.2	MUDFLUSH
9:24	0	1.9	14.10	156	10.0	10.0	H2O SPACER
9:29	55	2.1	14.10	24	5.1	20.2	CEMENT
10:02	60	2.7	14.43	359	83.6	98.6	DISPLACEMENT
10:12	0	2.4	13.54	7	1.4	121.8	OFF LINE
10:15	22	0.0	14.80	0	3.3	123.7	Paused 10:15:26
							ANNOTATION

Summary

Max Fl. Rate	Avg Fl. Rate	Max Psi	Avg Psi
2.7	2.3	2,675	133

Customer Acknowledgement:	Service Rating:	Cementer:	PRODUCTS USED
	<input type="checkbox"/> Satisfactory <input type="checkbox"/> Unsatisfactory	R GARCIA	