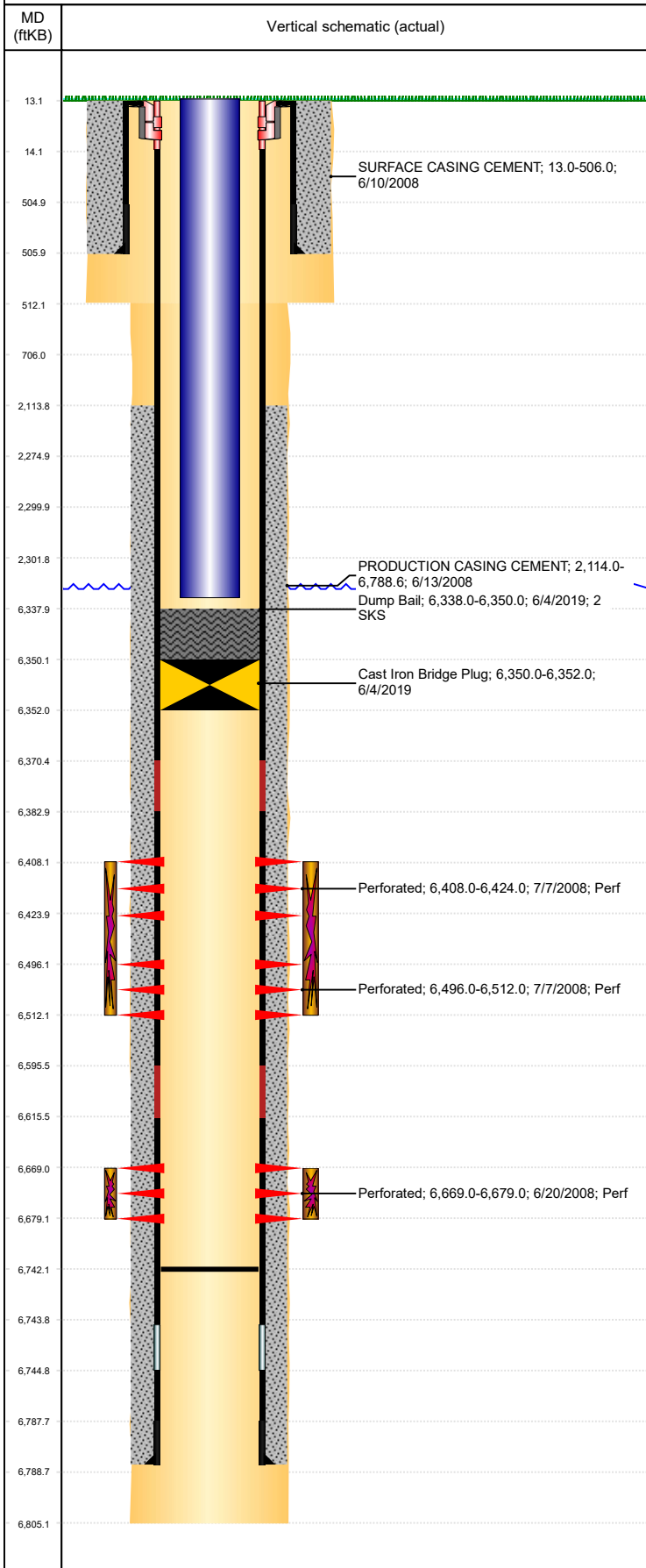


Well Name: WELLS RANCH USX AA35-16

VERTICAL, ORIGINAL HOLE, 8/7/2019 9:07:17 AM



Well Header									
API 05-123-25884		Business Unit DJ BASIN			District 15		Well Config VERTICAL		
KB - GL / MSL (ft... 13.00		Spud Date 6/10/2008		P & A Date		Well Production Status TA			SoRT Yes
Comment REQUESTED DIANE BLAIR TO CORRECT CASING INFO 8/7/08!									
Surface Location (Congressional)									
Qtr 3 SE	Qtr 4 SE	Section 35	Twنشp 6	Twنش... N	Range 63	Rng E/... W	Actual Latitude (°) 40.43741007	Actual Longitude (°) -104.39664113	
Wellbore Sections									
Section Des			Size (in)			Act Top, MD (ftKB)		Act Btm, MD (ftKB)	
SURFACE			9 7/8			13		512	
PRODUCTION			6 1/4			512		6,805	
Casing Strings									
Csg Des			Run Date		OD (in)	Wt/Len (lb/ft)	Grade	Top, MD (ftKB)	MD (ftKB)
Surface			6/10/2008		7	17.00	H-40	13.0	506.0
Production			6/12/2008		4 1/2	11.60	M-80	13.1	6,788.6
Cement									
Des					Start Date		Top (ftKB)		Btm (ftKB)
SURFACE CASING CEMENT					6/10/2008		13.0		506.0
PRODUCTION CASING CEMENT					6/13/2008		2,114.0		6,788.6
Dump Bail					6/4/2019		6,338.0		6,350.0
Zone Statuses									
Zone Name	Status Date	Status	Fluid Type	Job				Prod Method	
CODELL	2/1/2010	PR	Water	PLUG AND ABANDON, 6/3/2019 06:00				Flowing	
CODELL	6/4/2019	TA	Water					Flowing	
NIOBRARA	2/1/2010	PR	Water	PLUG AND ABANDON, 6/3/2019 06:00				Flowing	
NIOBRARA	6/4/2019	TA	Water						
Perforation Data									
Linked Zone		Bnch/Stg	Entered Shot Total	Top (ftKB)		Btm (ftKB)		Date	
NIOBRARA, ORIGINAL HOLE		A	64	6,408.00		6,424.00		7/7/2008	
NIOBRARA, ORIGINAL HOLE		B	64	6,496.00		6,512.00		7/7/2008	
CODELL, ORIGINAL HOLE			40	6,669.00		6,679.00		6/20/2008	
Stimulation Intervals									
Zone				Start Date		Top (ftKB)		Btm (ftKB)	
NIOBRARA, ORIGINAL HOLE				7/7/2008		6,408.0		6,512.0	
CODELL, ORIGINAL HOLE				7/7/2008		6,669.0		6,679.0	
Other In Hole									
Run Date		Des				OD (in)	Top (ftKB)		Btm (ftKB)
6/4/2019		Cast Iron Bridge Plug				4	6,350.0		6,352.0
Logs									
Date		Type				Top, MD (ftKB)		Btm, MD (ftKB)	
6/12/2008		Caliper/Comp. Density/Neutron/GR/SP/ML				2,600.0		6,761.0	
6/12/2008		DIL/GR/SP/Caliper				505.0		6,781.0	
6/20/2008		CBL/CCL/GR				2,000.0		6,703.0	
7/29/2013		GYRO				13.0		6,600.0	
Plug Back Total Depths									
Date		Type			Com				Depth (ftKB)
5/8/2014		FILL			TAG W/ 5.00' OUT ON 3RD TAG JT @ 6728.91				6,728.9
7/2/2014		FILL			NO C/O				6,742.0