

Inspection Photos

08/02/2019

Operator: WHITING OIL & GAS CORPORATION
- 96155

Location ID: 435644
Weld County, CO

Aaron Trujillo
NE Reclamation Specialist
COGCC

Inspection Photos
Operator Name: WHITING OIL & GAS CORPORATION - 96155
Location ID: 435644



Photo 1: Photo taken from the northeast end of the location, facing south. Photos 1-3 provide an overview of the location from south, southwest to west. Photos show that only the areas of the access road, and immediate areas surrounding the wells appear to have been stabilized. Photo shows large areas that remain unstabilized where stormwater ponding outside of the perimeter ditch is evident.



Photo 2: See comments under photo 1.

Inspection Photos
Operator Name: WHITING OIL & GAS CORPORATION - 96155
Location ID: 435644



Photo 3: See comments under photo 1.



Photo 4: Photo taken from the southeast end of the location, facing west. Photos 4-6 provide an overview of the location from west, northwest to north. Photos show that only the areas of the access road, and immediate areas surrounding the wells appear to have been stabilized. Photo shows large areas that remain unstabilized where stormwater ponding outside of the perimeter ditch is evident.

Inspection Photos
Operator Name: WHITING OIL & GAS CORPORATION - 96155
Location ID: 435644



Photo 5: See comments under photo 4.



Photo 6: See comments under photo 4.



Inspection Photos

Operator Name: WHITING OIL & GAS CORPORATION - 96155

Location ID: 435644



Photo 7: Photo taken from the south end of the location, facing northwest. Photos 7-9 provide an overview of the interim and reclamation areas from northwest, north, and east.



Photo 8: See comments under photo 7.

Inspection Photos
Operator Name: WHITING OIL & GAS CORPORATION - 96155
Location ID: 435644



Photo 9: See comments under photo 7.



Photo 10: Photo taken from the south end of the location, facing west. Photo shows the perimeter stormwater ditch during initial construction activities remaining. BMPs have not been maintained, do not appear to be needed and require reclamation.

Inspection Photos

Operator Name: WHITING OIL & GAS CORPORATION - 96155

Location ID: 435644



Photo 11: Photo taken from the south end of the location, facing east. Photo shows the perimeter stormwater ditch during initial construction activities remaining. BMPs have not been maintained, do not appear to be needed and require reclamation.



Photo 12: Photo taken from the southwest end of the location, facing west. Photo shows the perimeter stormwater ditch during initial construction activities remaining. BMPs have not been maintained, do not appear to be needed and require reclamation.

Inspection Photos

Operator Name: WHITING OIL & GAS CORPORATION - 96155

Location ID: 435644



Photo 13: Photo taken from the southwest end of the location, facing west. Photo shows the perimeter stormwater ditch and sediment trap BMPs during initial construction activities remaining. BMPs have not been maintained, do not appear to be needed and require reclamation.



Photo 14: Photo taken from the north end of the location, facing west. Photo shows the perimeter stormwater ditch during initial construction activities remaining. BMPs have not been maintained, do not appear to be needed and require reclamation.

Inspection Photos
Operator Name: WHITING OIL & GAS CORPORATION - 96155
Location ID: 435644

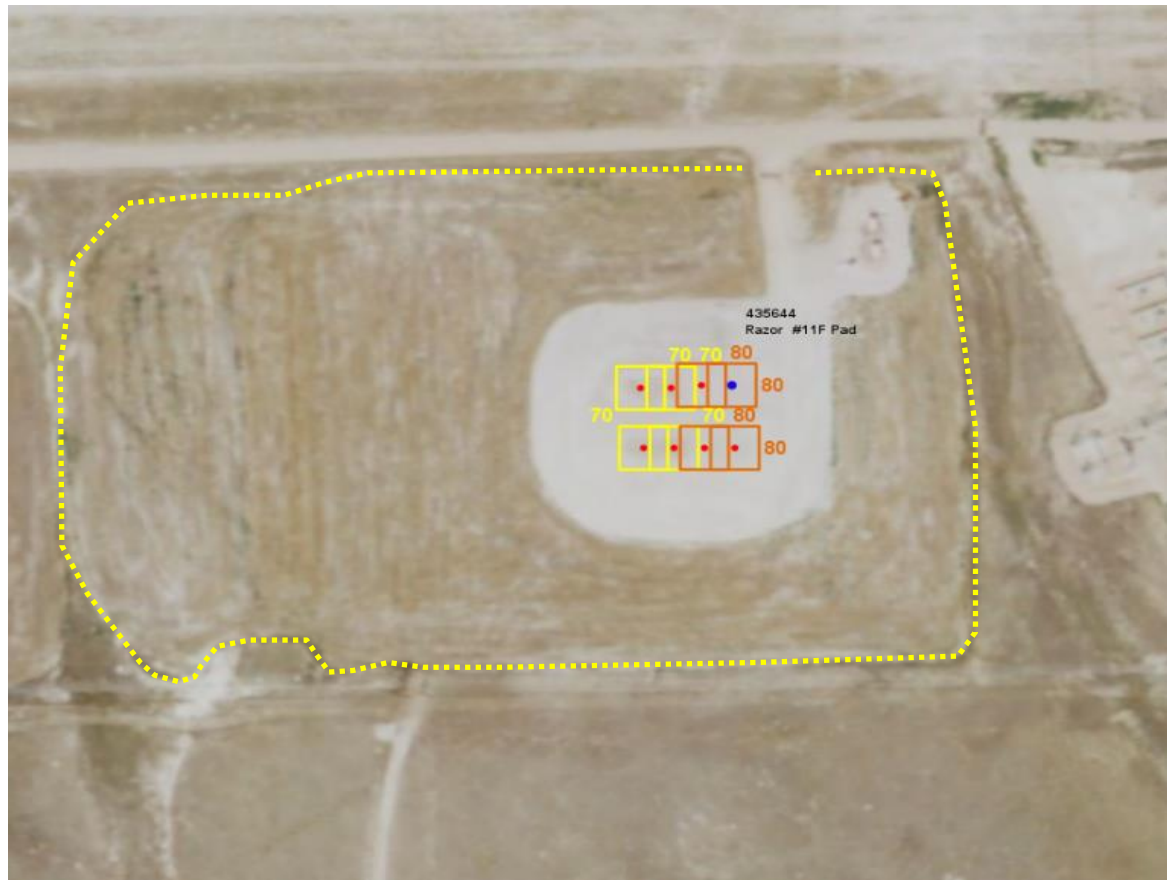


Photo 15: 2017 COGCC COGIS aerial image. Photo shows perimeter stormwater ditch (yellow dotted line) w/ sediment traps, BMPs, etc... that require reclamation

