

Fletcher Gulch 33-44  
API: 05-103-10889  
Inspection: 679704958



**Photo 1. Location.**

Fletcher Gulch 33-44  
API: 05-103-10889  
Inspection: 679704958

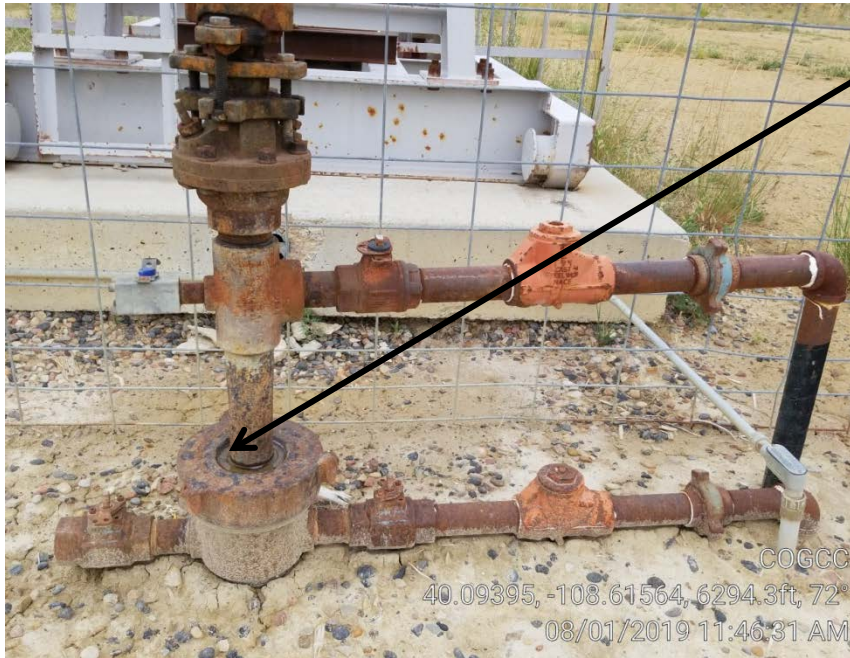


Photo 2. Well head.

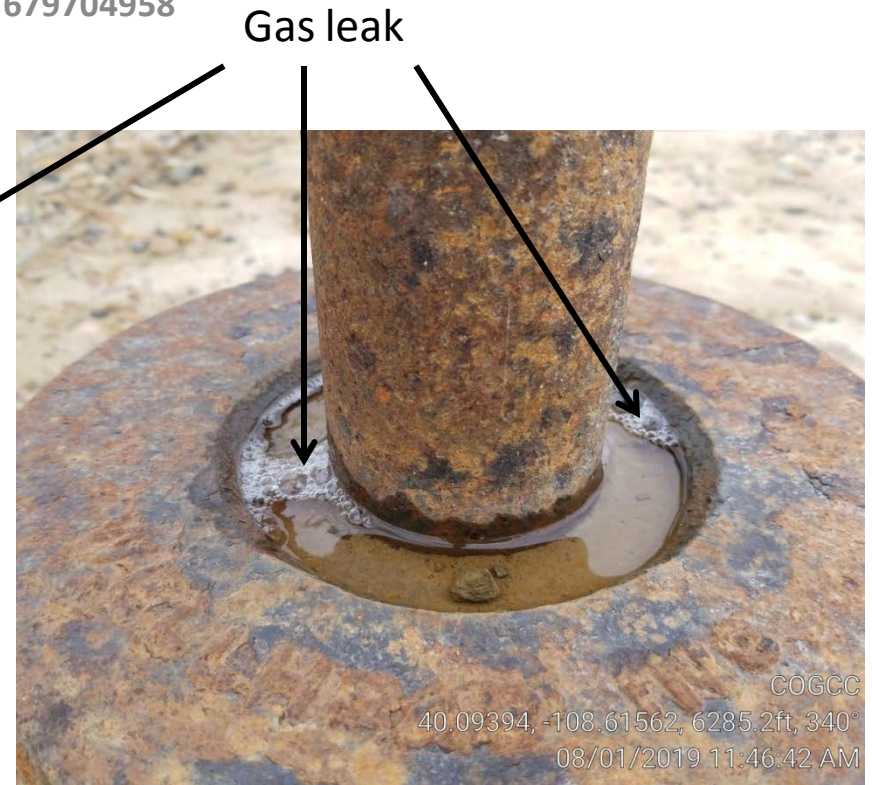


Photo 3. Well head gas leak.

**Fletcher Gulch 33-44**  
**API: 05-103-10889**  
**Inspection: 679704958**



**Photo 4. Pump jack weeds.**



**Photo 5. Meter building weeds.**

Fletcher Gulch 33-44  
API: 05-103-10889  
Inspection: 679704958

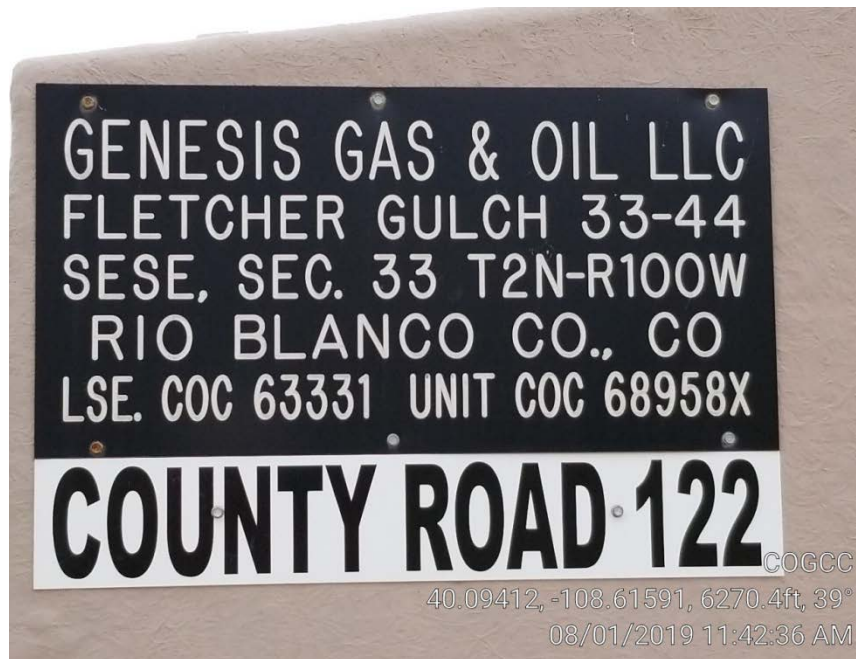


Photo 6. Battery sign.



Photo 7. Lease road 500' from location.

Storm water  
travel

Fletcher Gulch 33-44  
API: 05-103-10889  
Inspection: 679704958

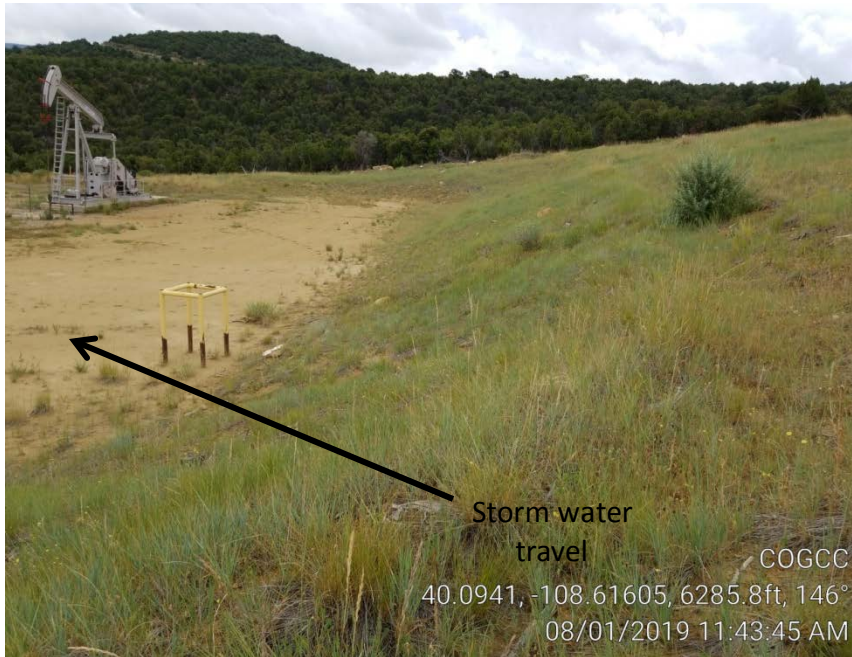


**Photo 8. Storm water channels entering well location from lease road.**



**Photo 9. Storm water channels exiting well location.**

Fletcher Gulch 33-44  
API: 05-103-10889  
Inspection: 679704958



**Photo 10. Southwest end of slope terrace filled with sediment from lease road storm water.**