



Bayswater Exploration & Production, LLC

G & D Hanks P-27-28HN

API # 05-123-46032

Production

May 18, 2019

Quote #: 31261

Execution #: 18016



Bayswater Exploration & Production, LLC

Attention: Mr. Josh Falls | (720) 484-1146 | Josh.Falls@iptenergyservices.com

Bayswater Exploration & Production | 730 17th Street, Suite 610 | Denver, CO. 80202

Dear Mr. Josh Falls,

Thank you for the opportunity to provide cementing services on this well. BJ Services strives to achieve complete customer satisfaction. If you have any questions regarding the services or data provided, please contact BJ Services at any time.

Sincerely,
Jason Creel
Field Engineer I | (307) 256-3006 | jason.creel@bjservices.com

Field Office 1716 East Allison Rd., Cheyenne WY, 82007
Phone: (307) 638-5585

Sales Office 999 18th St. Suite 1200 Denver, CO 80202
Phone: (281) 408-2361

BJ Cementing Treatment Report

SERVICE SUPERVISOR	Hector Montoya	RIG	True 38
DISTRICT	Cheyenne, WY	COUNTY	WELD
SERVICE	Cementing	STATE / PROVINCE	CO

WELL GEOMETRY

TYPE	ID (in)	OD (in)	WEIGHT (lb/ft)	MD (ft)	TVD (ft)	EXCESS (%)
Open Hole	8.50	0.00	0.00	18,224.00	7,281.00	5.00
Casing	4.78	5.50	20.00	18,205.00	7,281.00	
Previous Casing	8.92	9.63	36.00	1,556.00	1,556.00	

HARDWARE

Bottom Plug Used?	No	Landing Collar Depth (ft)	18,179
Top Plug Used?	Yes	Max Casing Pressure - Rated (psi)	8830.00
Top Plug Provided By	Non BJ	Max Casing Pressure - Operated (psi)	7064.00
Top Plug Size	5.500	Job Pumped Through	Manifold
Centralizers Used	Yes	Top Connection Thread	5.5
Centralizers Quantity	212.00	Top Connection Size	BTC
Centralizers Type	Rigid		

CIRCULATION PRIOR TO JOB

Well Circulated By	Rig	PV Mud Out	55
Circulation Prior to Job	No	YP Mud In	9
Circulation Time (min)	150.00	YP Mud Out	9
Circulation Rate (bpm)	9.00	Solids Present at End of Circulation	No
Circulation Volume (bbls)	1350.00	10 sec SGS	10
Lost Circulation Prior to Cement Job	No	10 min SGS	15
Mud Density In (ppg)	10.00	30 min SGS	19
Mud Density Out (ppg)	9.90	Flare Prior to / during the Cement Job	No
PV Mud In	55	Gas Present	No

Client Name: Bayswater Exploration & Production, LLC Well: G & D HANKS P-27-28HN Well API: 05-123-46032

Start Date: 5/18/2019 End Date: 5/18/2019



TEMPERATURE

Ambient Temperature (°F)	50.00	Slurry Cement Temperature (°F)	55.00
Mix Water Temperature (°F)	50.00	Flow Line Temperature (°F)	130.00

FLUID DETAILS

FLUID TYPE	FLUID NAME	DENSITY (ppg)	YIELD (Cu Ft/sk)	H ₂ O REQ (gals/sk)	PLN TOP FLD (ft)	LENGTH (ft)	VOL (sk)	VOL (Cu Ft)	VOL (bbls)
Spacer / Pre Flush / Flush	IntegraGuard EZ Spacer II	12.0000			0.00				28.0000
Spacer / Pre Flush / Flush	IntegraGuard EZ Spacer II	11.5000			6,063.00				26.0000
Spacer / Pre Flush / Flush	IntegraGuard EZ Spacer II	11.0000			0.00				26.0000
Lead Slurry	BJCem P100.3.01C	13.2000	1.8295	9.87	0.00	7,015.00	950	1732.0000	308.4000
Tail Slurry	BJCem P50.6.02C	13.5000	1.4772	7.45	7,015.00	11,197.00	1830	2699.0000	480.6000
Displacement 2	Retarded Water w/ Clay Protection & Biocide	8.3331				0.00	0	0.0000	10.0000
Displacement Final	Water w/ Clay Protection & Biocide	8.3331			0.00			0.0000	393.0000

Client Name: Bayswater Exploration & Production, LLC **Well:** G & D HANKS P-27-28HN **Well API:** 05-123-46032

Start Date: 5/18/2019 **End Date:** 5/18/2019



FLUID TYPE	FLUID NAME	COMPONENT	CONCENTRATION	UOM
Spacer / Pre Flush / Flush	IntegraGuard EZ Spacer II	WEIGHTING ADDITIVE, W-11	243.3100	PPB
Spacer / Pre Flush / Flush	IntegraGuard EZ Spacer II	RETARDER, R-7C	2.0000	PPB
Spacer / Pre Flush / Flush	IntegraGuard EZ Spacer II	RETARDER, R-31	0.5000	PPB
Spacer / Pre Flush / Flush	IntegraGuard EZ Spacer II	SPACER SURFACTANT, SS-267	1.0000	GPB
Spacer / Pre Flush / Flush	IntegraGuard EZ Spacer II	IntegraGuard GW-86	1.2000	PPB
Lead Slurry	BJCem P100.3.01C	IntegraGuard GW-86	0.1000	BWOB
Lead Slurry	BJCem P100.3.01C	CEMENT, ASTM TYPE III	100.0000	PCT
Lead Slurry	BJCem P100.3.01C	FOAM PREVENTER, FP-25	0.3000	BWOB
Lead Slurry	BJCem P100.3.01C	IntegraCare EC-2	3.0000	BWOB
Lead Slurry	BJCem P100.3.01C	FLUID LOSS, FL-66	0.5000	BWOB
Lead Slurry	BJCem P100.3.01C	RETARDER, SR-20	0.7000	BWOB
Tail Slurry	BJCem P50.6.02C	FLUID LOSS, FL-66	0.2000	BWOB
Tail Slurry	BJCem P50.6.02C	FOAM PREVENTER, FP-25	0.3000	BWOB
Tail Slurry	BJCem P50.6.02C	EXTENDER, BENTONITE	2.0000	BWOB
Tail Slurry	BJCem P50.6.02C	CEMENT, CLASS G	50.0000	PCT
Tail Slurry	BJCem P50.6.02C	IntegraGuard GW-86	0.1000	BWOB
Tail Slurry	BJCem P50.6.02C	Flyash (Rockies)	50.0000	PCT
Tail Slurry	BJCem P50.6.02C	RETARDER, SR-20	0.0700	BWOB
Displacement 2	Retarded Water w/ Clay Protection & Biocide	ResCare CS-2	0.0800	GPB
Displacement 2	Retarded Water w/ Clay Protection & Biocide	RETARDER, SR-61L	0.1000	GPB
Displacement 2	Retarded Water w/ Clay Protection & Biocide	BIOCIDE, BIOC11139W	0.0100	GPB
Displacement Final	Water w/ Clay Protection & Biocide	BIOCIDE, BIOC11139W	0.0100	GPB
Displacement Final	Water w/ Clay Protection & Biocide	ResCare CS-2	0.0800	GPB

DISPLACEMENT AND END OF JOB SUMMARY

Displaced By	BJ	Amt of Cement Returned / Reversed	50.00
Calculated Displacement Vol (bbls)	403.00	Method Used to Verify Returns	Visual
Actual Displacement Vol (bbls)	398.00	Amt of Spacer to Surface	80.00
Did Float Hold?	Yes	Pressure Left on Casing (psi)	0.00
Bump Plug	Yes	Amt Bled Back After Job	4.50
Bump Plug Pressure (psi)	3500.00	Total Volume Pumped (bbls)	1275.00
Were Returns Planned at Surface	Yes	Top Out Cement Spotted	No
Cement Returns During Job	Full	Lost Circulation During Cement Job	No

Client Name: Bayswater Exploration & Production, LLC Well: G & D HANKS P-27-28HN Well API: 05-123-46032

Start Date: 5/18/2019 End Date: 5/18/2019



BJ Cementing Event Log

Long String - Cheyenne, WY - Hector Montoya

SEQ	START DATE / TIME	EVENT	DENSITY (ppg)	PUMP RATE (bpm)	PUMP VOL (bbls)	PIPE PRESSURE (psi)	COMMENTS
1	05/18/2019 02:00	Callout					BJ Crew gets called out
2	05/18/2019 04:00	Other (See comment)					Load up for job
3	05/18/2019 05:00	STEACS Briefing					Crew talks about the hazards of driving to location
4	05/18/2019 05:15	Arrive on Location					Crew safely arrives on location
5	05/18/2019 07:00	STEACS Briefing					Talk about the hazards of rigging up
6	05/18/2019 07:15	Rig Up					Rig Up
7	05/18/2019 09:00	Other (See comment)					Wait on rig to circulate
8	05/18/2019 10:30	STEACS Briefing					BJ Crew and Rig Crew talk about the hazards of pumping the job and discuss job procedure
9	05/18/2019 10:43	Prime Up					Fill lines
10	05/18/2019 10:49	Pressure Test					Pressure Test to 5000psi
11	05/18/2019 10:56	Pump Spacer	12.0000	4.00	28.00	750.00	Pump 28bbl Spacer at 12ppg
12	05/18/2019 11:05	Pump Spacer	11.5000	5.00	26.00	800.00	Pump 26bbl Spacer at 11.5ppg
13	05/18/2019 11:11	Pump Spacer	11.0000	5.00	26.00	700.00	Pump 26bbl Spacer at 11ppg
14	05/18/2019 11:20	Pump Lead Cement	13.2000	6.50	308.00	800.00	Pump 308bbl at 13.2ppg, 950sks BJ Cem P100.3.01C, yield-1.82, gps-9.87, mix water 223bbl
15	05/18/2019 12:07	Pump Tail Cement	13.5000	6.50	480.00	900.00	Pump 480bbl at 13.5ppg, 1830sks BJ Cem P50.6.02C, yield-1.4772, gps-7.45, Mix Water-325bbl, Height of Tail at 11,745ft, Estimated Top of Tail at 6,475ft.
16	05/18/2019 13:27	Wash Pumps and Lines					Clean Pumps out to pit
17	05/18/2019 13:36	Drop Top Plug					Customer witnesses Top Plug leave
18	05/18/2019 13:38	Pump Displacement	8.3300	8.00	383.00	2900.00	Pump TOTAL 403bbl, first 10bbl with retarder, add biocide and rescare, Shutdown at 225away to switch from shakers to pit for 4min.
19	05/18/2019 14:24	Pump Displacement	8.3300	5.00	20.00	2500.00	Slow rate last 20bbl to 5bpm to land plug, 50BBL cement to surface

Page 1

Client: Bayswater Exploration & Production, LLC

Plan #: ORD-18016-B2P1G3

Well: G & D HANKS P-27-28HN

Execution #: EXC-18016-B2P1G302

Well 05-123-46032
API:

Quote #: QUO-31261-M9Y3Z0



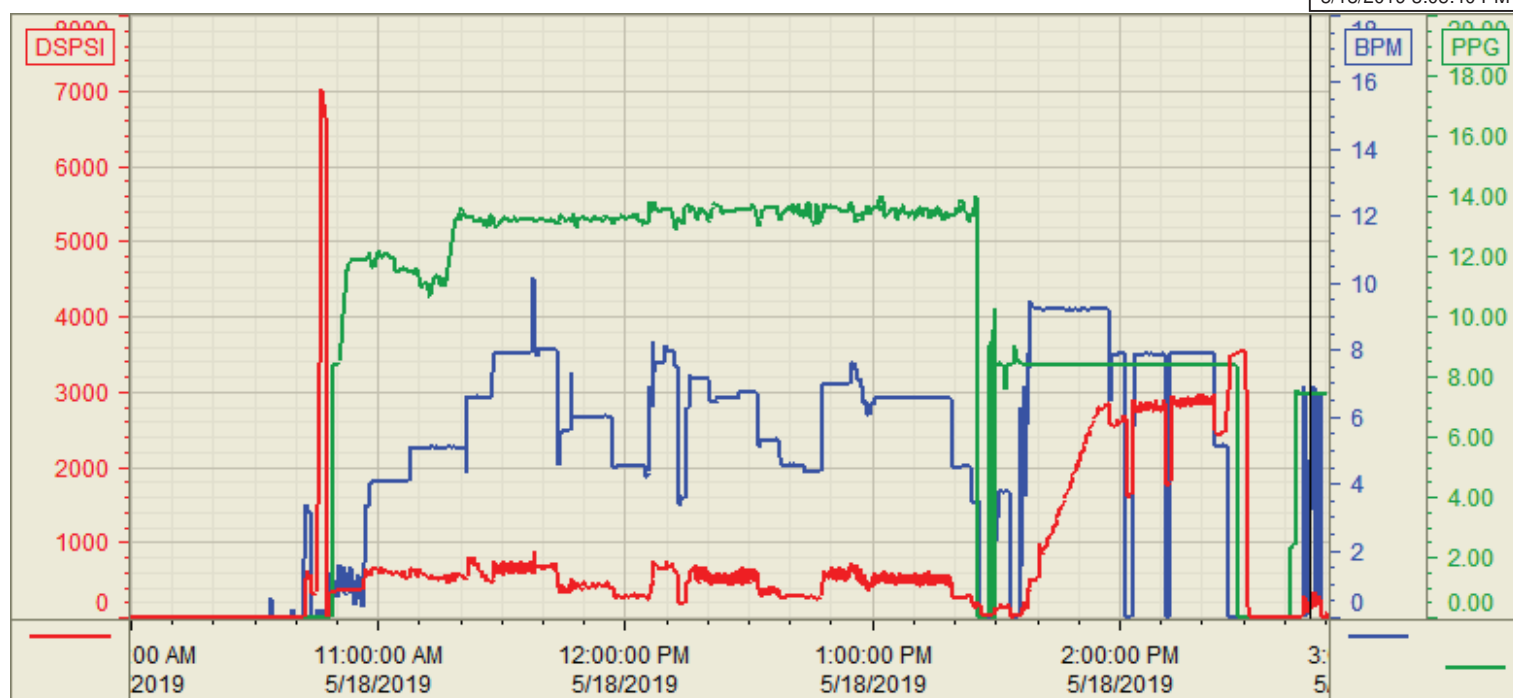
20	05/18/2019 14:27	Land Plug				3500.00	Final circulating pressure was 2500psi, took to 3500psi hold pressure 3min
21	05/18/2019 14:30	Check Floats					Floats Held, 4.5bbl back to the truck
22	05/18/2019 14:35	STEACS Briefing					BJ Crew talks about the hazards of rigging down
23	05/18/2019 14:45	Rig Down					Rig Down
24	05/18/2019 16:00	Leave Location					BJ Crew departs location

Customer: BAYSWATER
Well Number: G&D HANKS
Lease Info: P-27-28HN



Print Date/Time

5/18/2019 3:05:40 PM



	Name	Y value	X value/time stamp	Tag name Y
1	DS - Press(PSI)	173.0 i.	5/18/2019 2:46:04 PM i.	Cementer\DS_DISCHARGE_PRESS_DIAL
2	Recirc - Density (PPG)	7.44 i.	5/18/2019 2:46:04 PM i.	Cementer\DENSITY_ACTUAL_RATE
3	Combined rate (BPM)	3.98 i.	5/18/2019 2:46:04 PM i.	Cementer\Flow_Combined
4				
5				

Source: Control1 3:05:35 PM