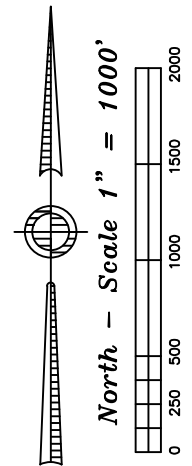
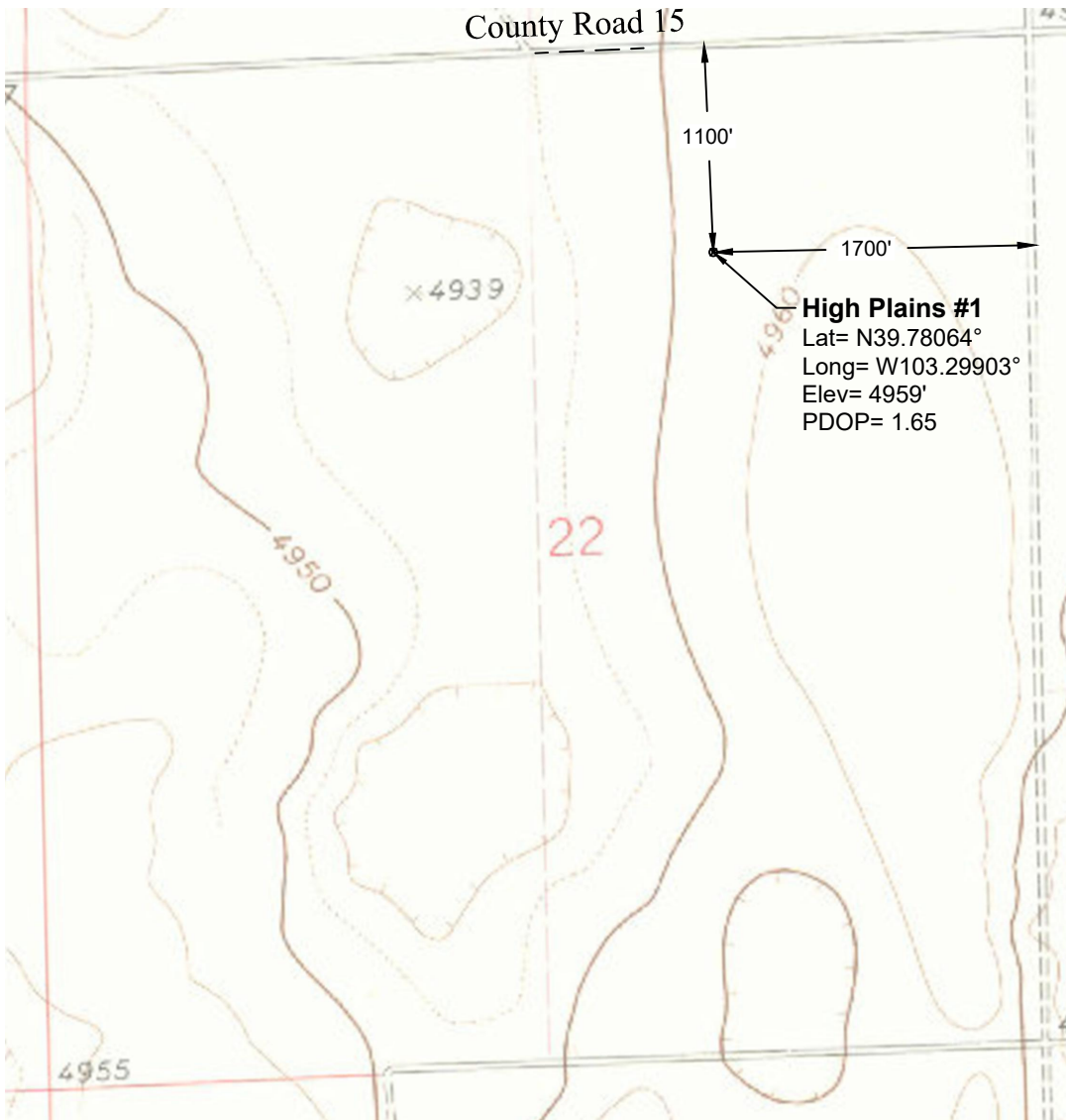


# Topographic Map



## Notes:

- In accordance with a request from St. Croix Operating, Inc., PLS Corporation has determined the location of the High Plains #1 well to be 1700' FEL and 1100' FNL as measured perpendicular to the section lines.
- Survey elevations based on NAVD 88 Datum using GPS observed heights and Geoid 12B corrections.
- Distances shown are in SPC grid feet. Ground scale factor= 1.000227769692.
- There are no improvements within 100' of the proposed well site.
- Apparent Land Use is cropland.
- Vegetation is unknown.
- Topographic map contours and spot elevations based on NGVD 1929 Datum.
- Topographic map dated 1973.

P:\Project\2019\19024\dwg\19024\_Topo.dwg May 22, 2019 - 9:55am

Well Name:	<b>High Plains #1</b>	Field Date <b>4.6.2019</b>	Prepared for:	Project#: <b>19024.001</b>
		Party Chief <b>DCB</b>	<b>St. Croix Operating, Inc.</b>	
Section 22-T3S-R53W-6th PM, NW-NE		Proj. Manager <b>MDG</b>		
Washington County, Colorado		Drawing Date <b>5.22.2019</b>		
			PLS Corporation 532 West 66th Street Loveland, Colorado 80538 970.669.2100 office - info@plscorporation.com	