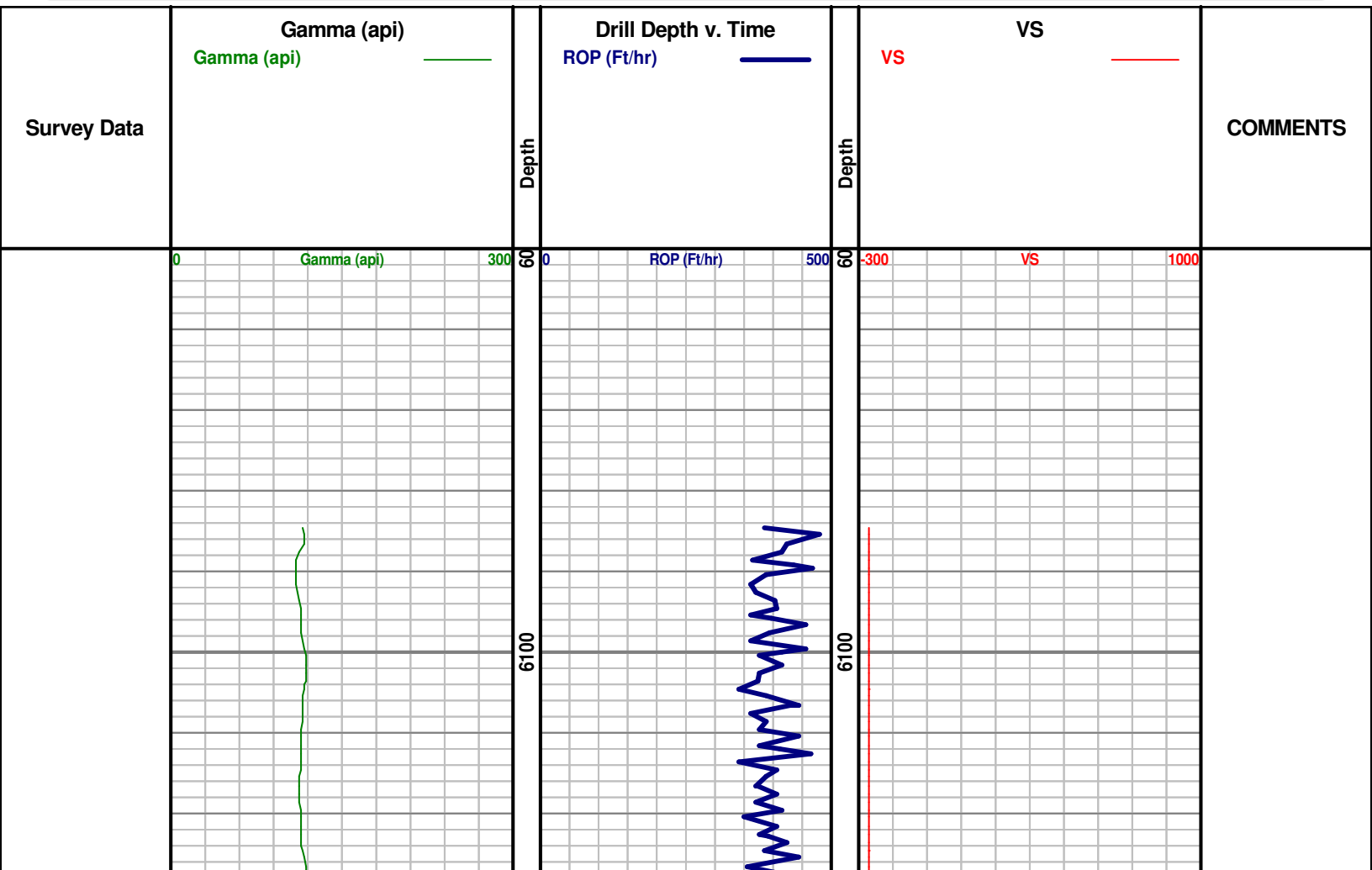


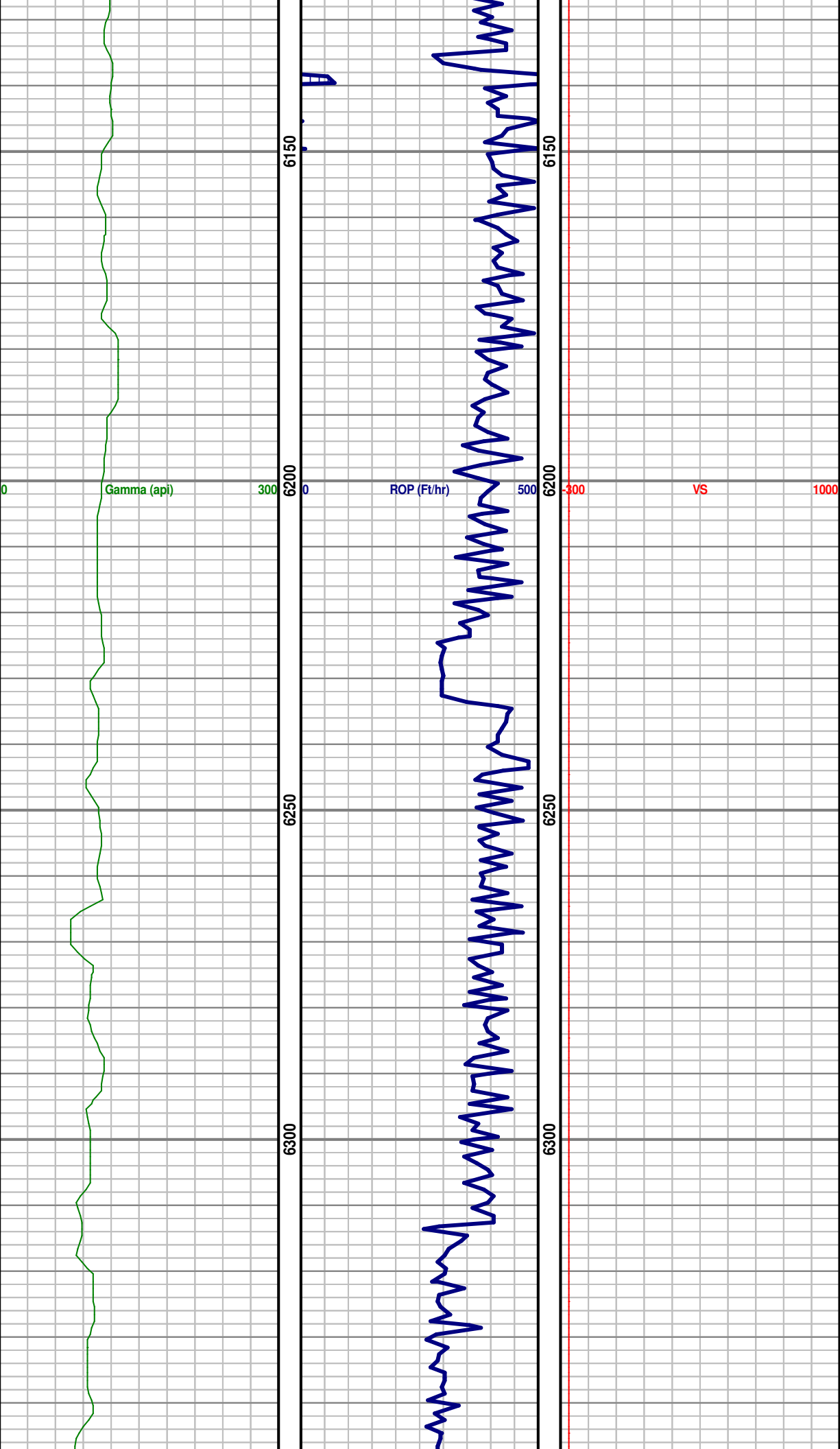


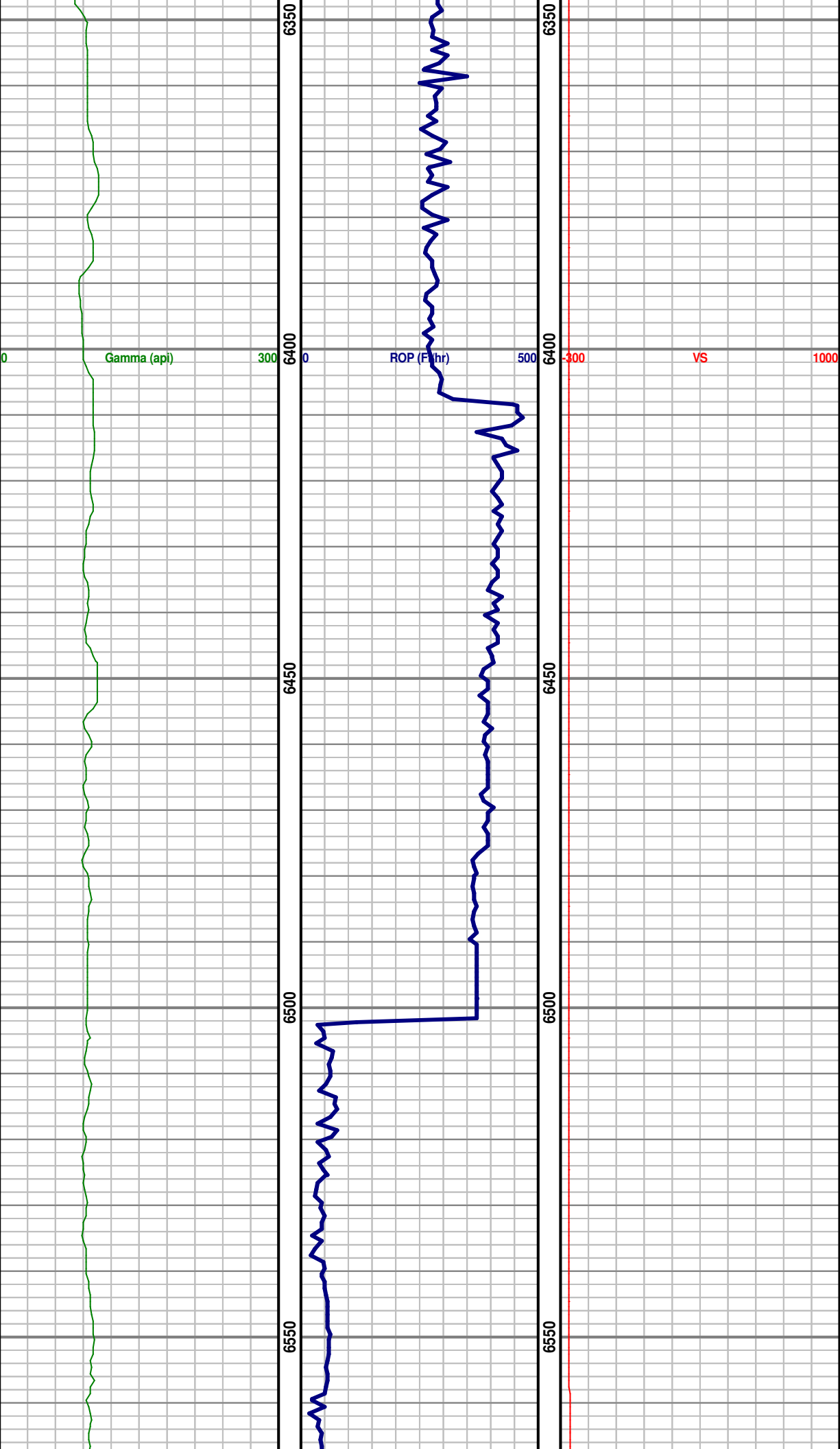
**Denver Remote Management Center**  
**13949 West Colfax Ave, Suite 205**  
**Lakewood, Colorado 80401**

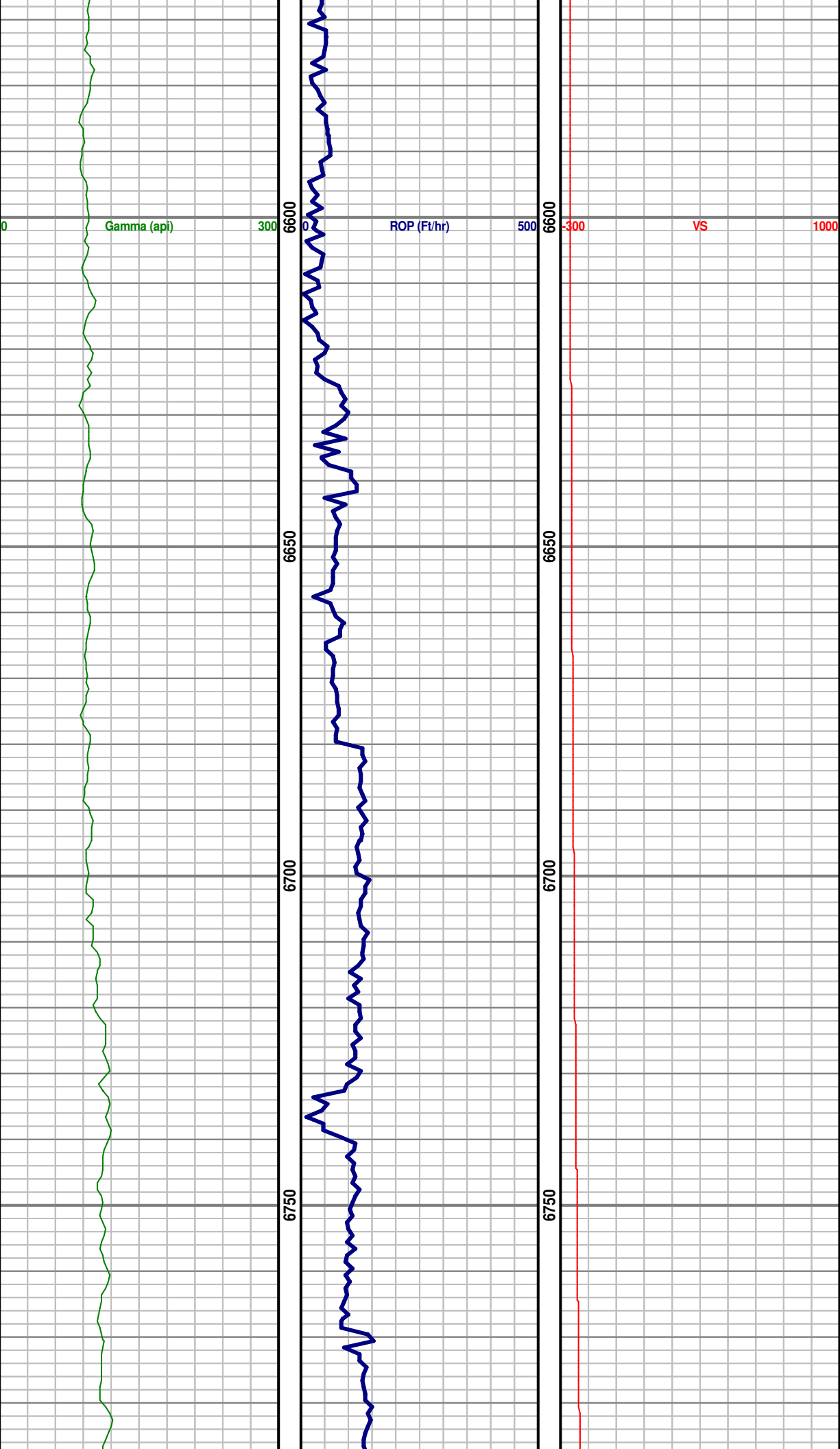
Phone 303.325.3289  
**WWW.HZMUD.COM**

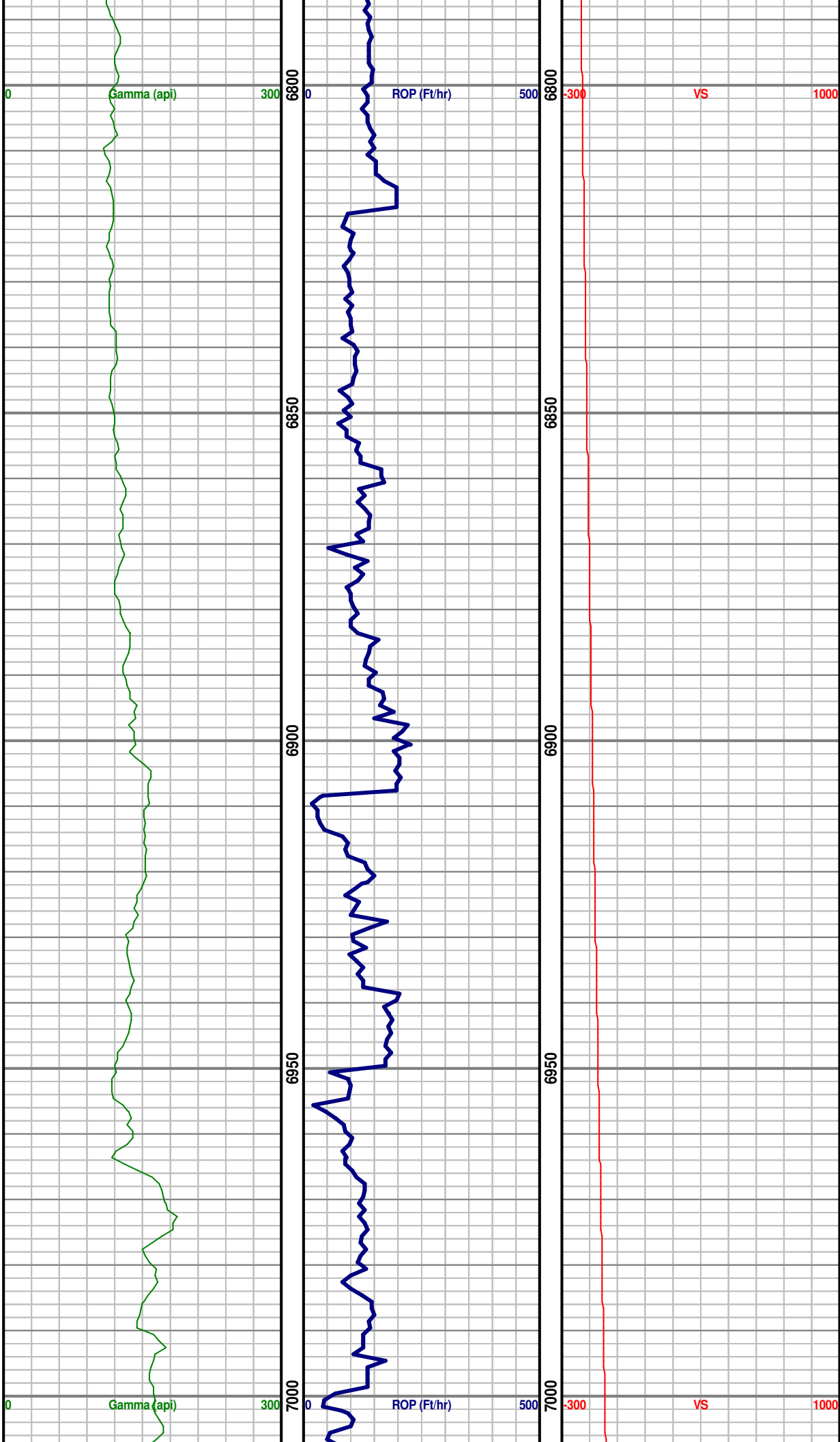
Customer Information	Well Information
<p><b>Operator:</b> PDC Energy Inc  1775 Sherman Street  Suite 3000  Denver, CO 80203</p> <p><b>Geologist:</b> Rachel Debaillon  PDC Energy, Inc.</p>	<p><b>Well Name:</b> Wiedeman 29K-403</p> <p><b>Location:</b> NWSW SEC 29, 4N, 66W, 6TH  2,221' FSL x 1,250' FWL</p> <p><b>County:</b> Weld  <b>State:</b> Colorado</p>
Remote Logging Details	
<p><b>Logger:</b> HORIZON DENVER REMOTE  MANAGEMENT CENTER</p> <p><b>Log Interval:</b> 6,085' MD to 11,565' MD  <b>Start Date:</b> July 15, 2014  <b>Release Date:</b> July 20, 2014</p>	<p><b>Drilling Rig:</b> Ensign 123  <b>Total Depth:</b> 11,565' MD  <b>TD Date:</b> July 20, 2014  <b>Field :</b> Wattenberg  <b>KB Elevation:</b> 4,774'  <b>GR Elevation:</b> 4,761'  <b>API Number:</b> 05-123-37965-0000</p>

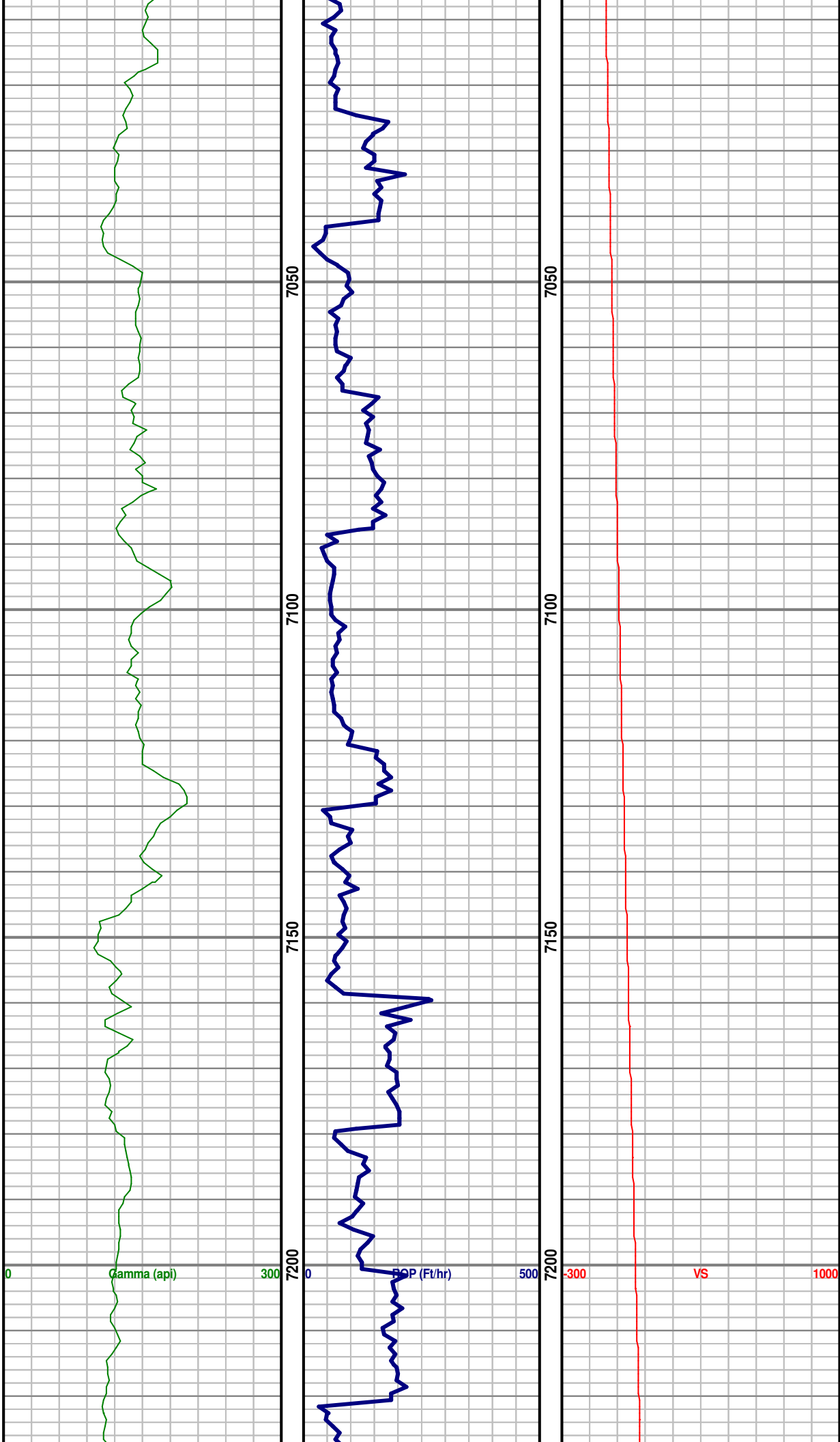


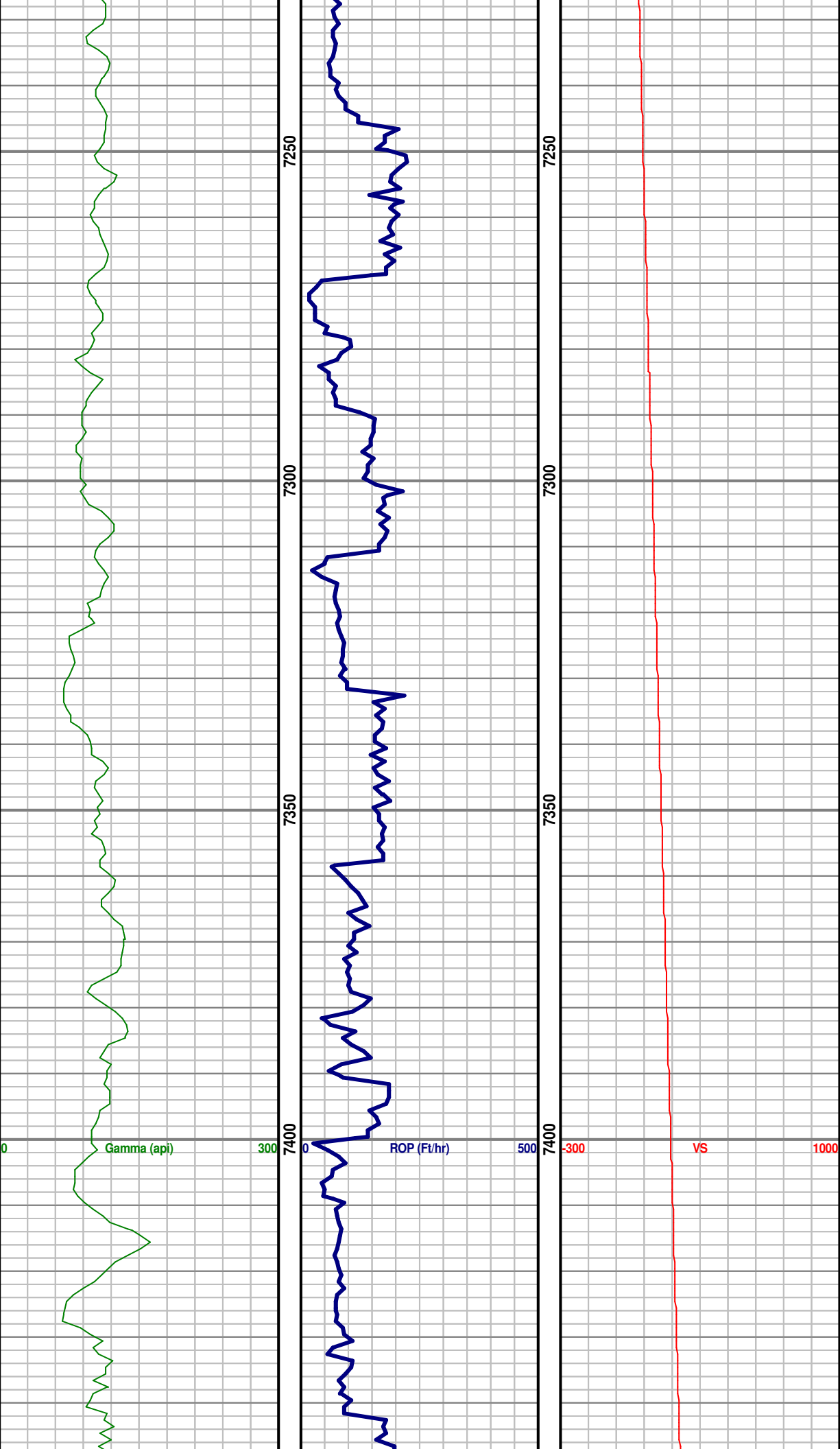


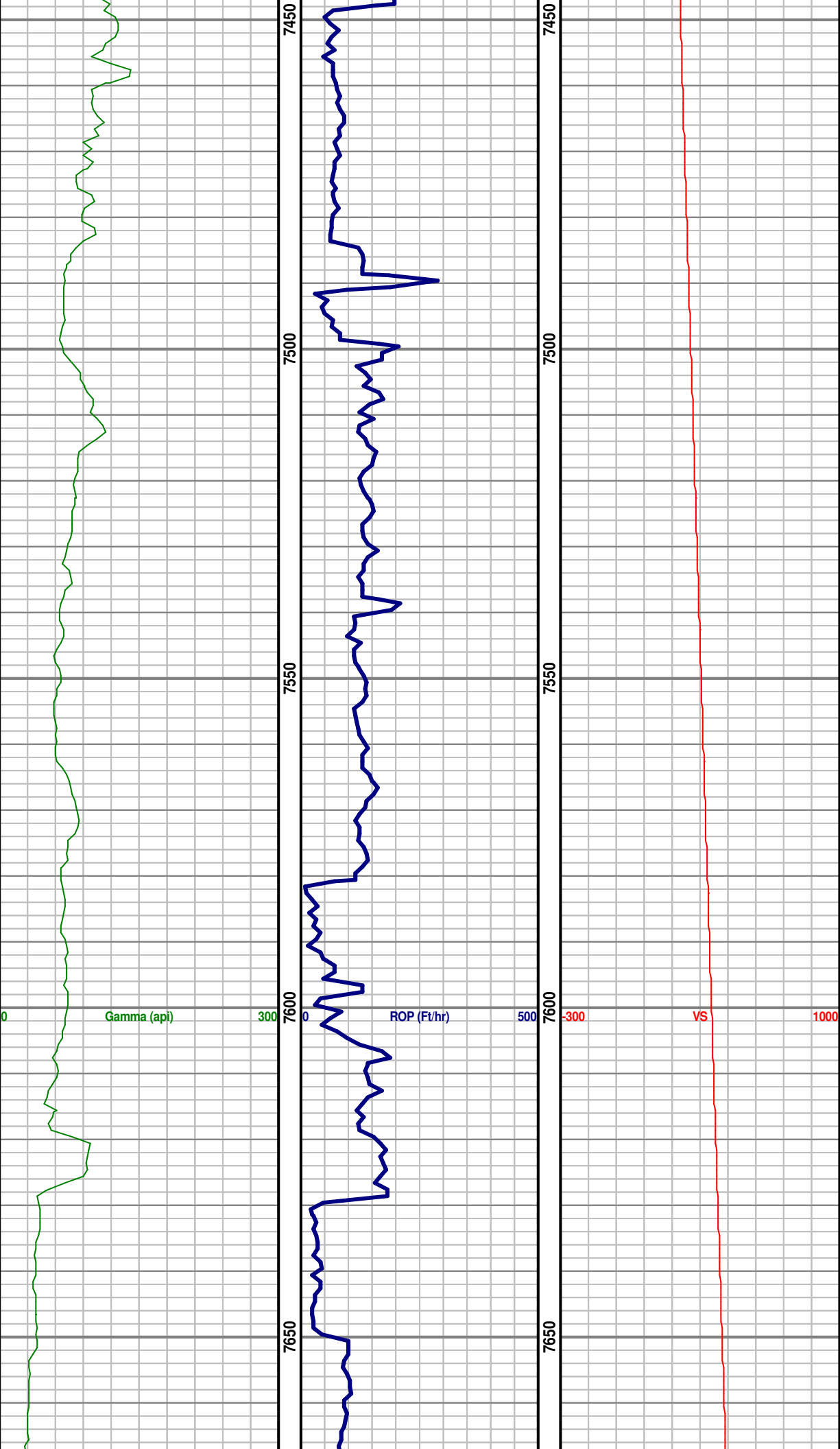






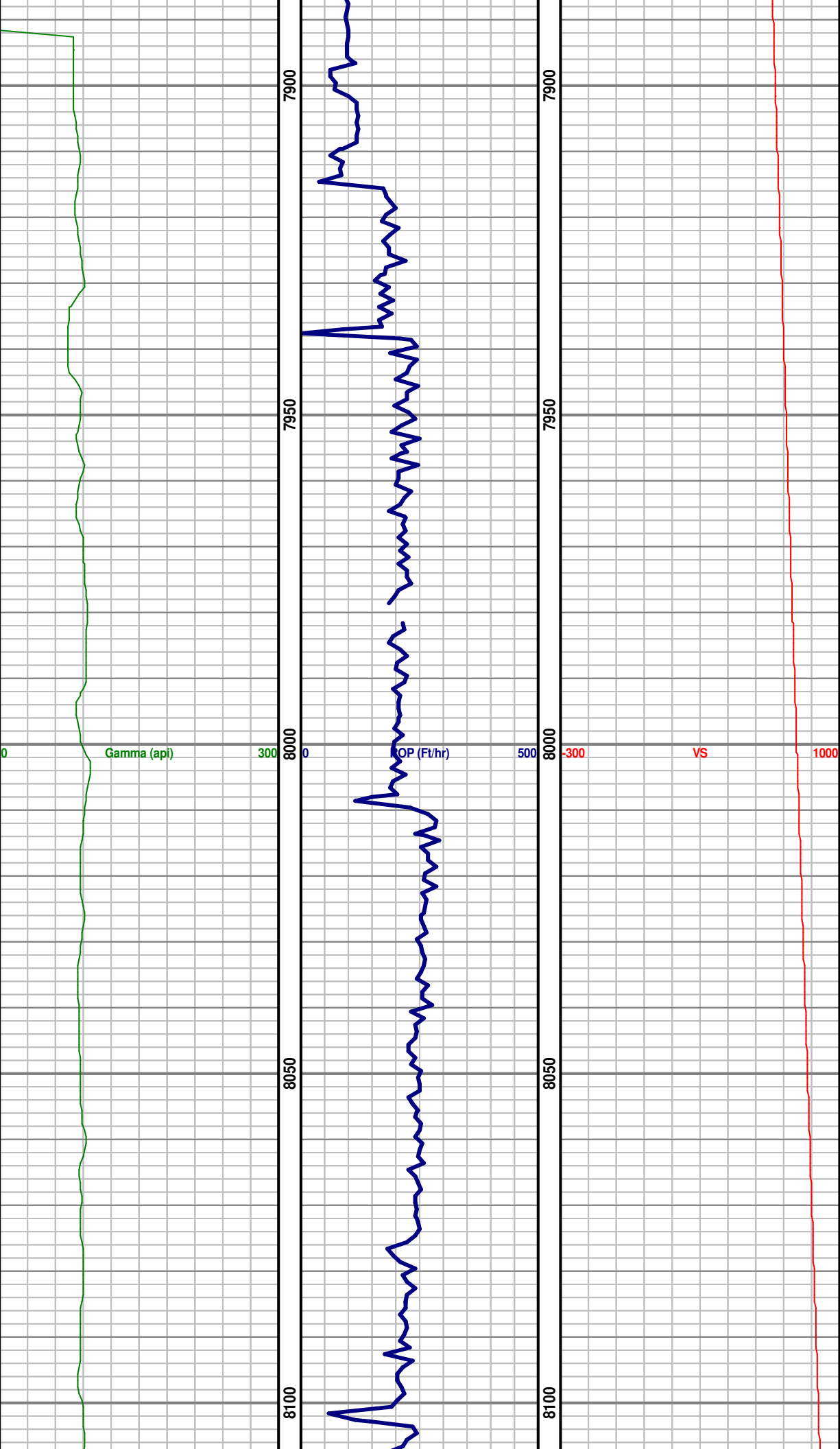


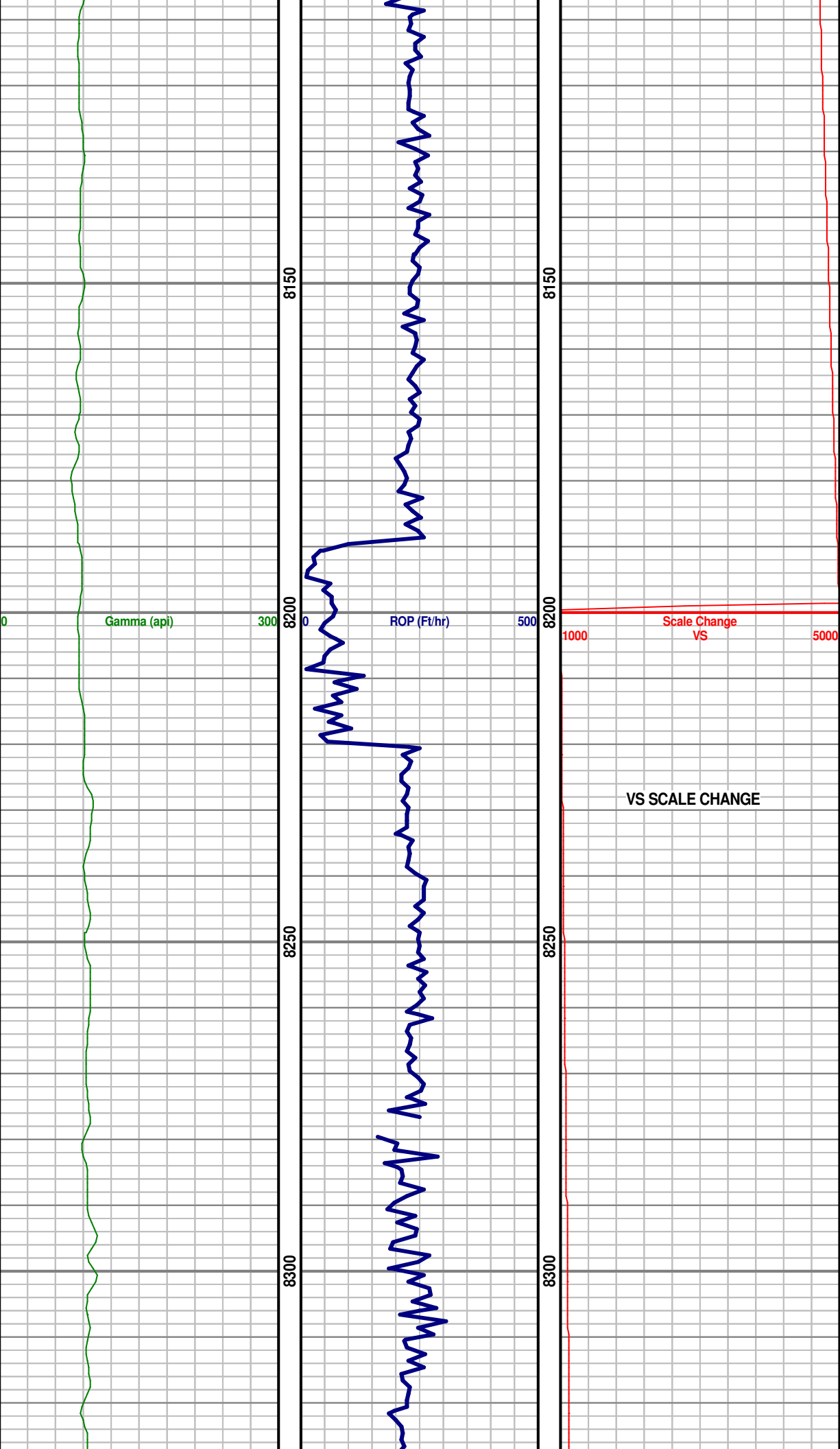


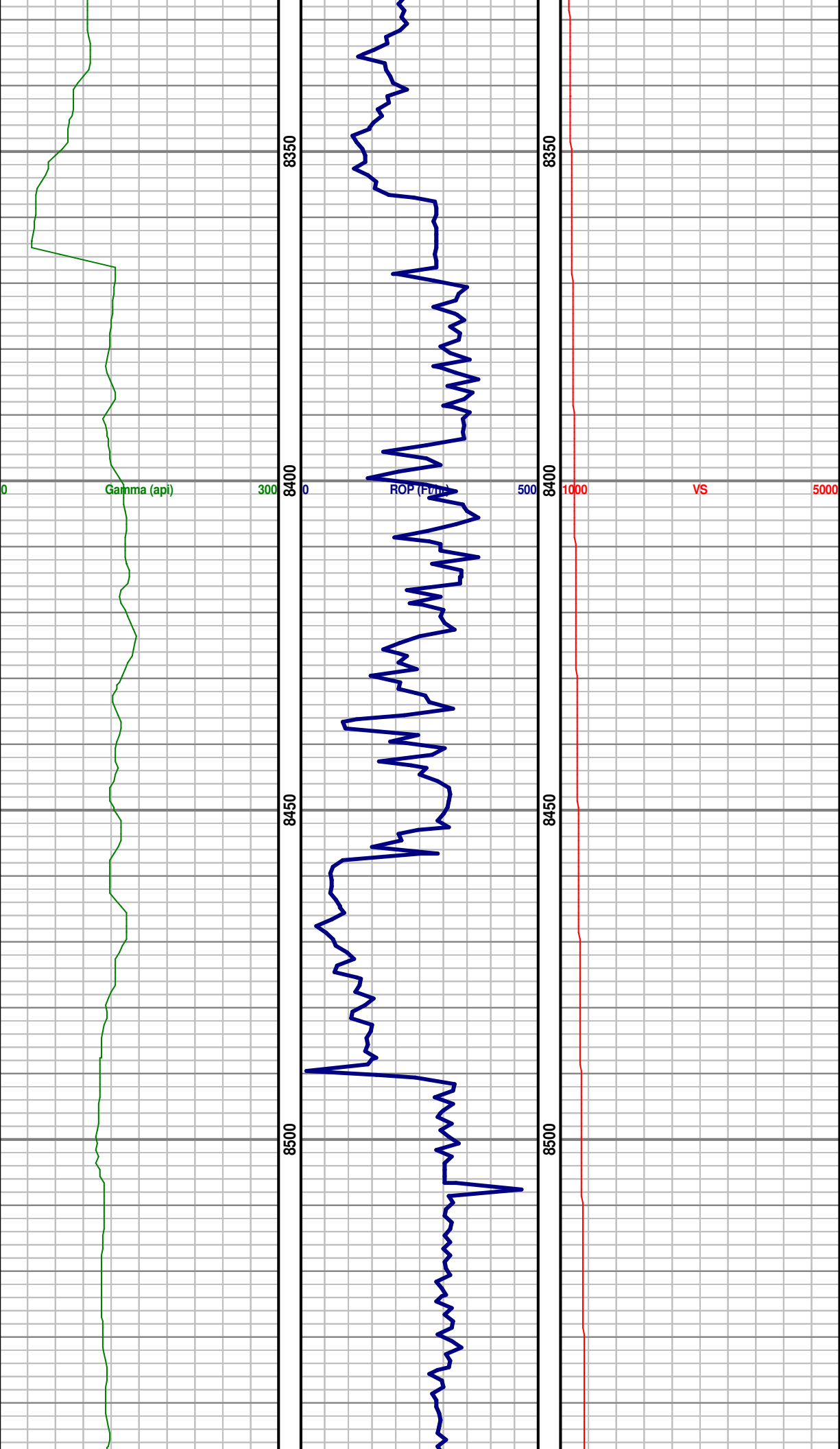


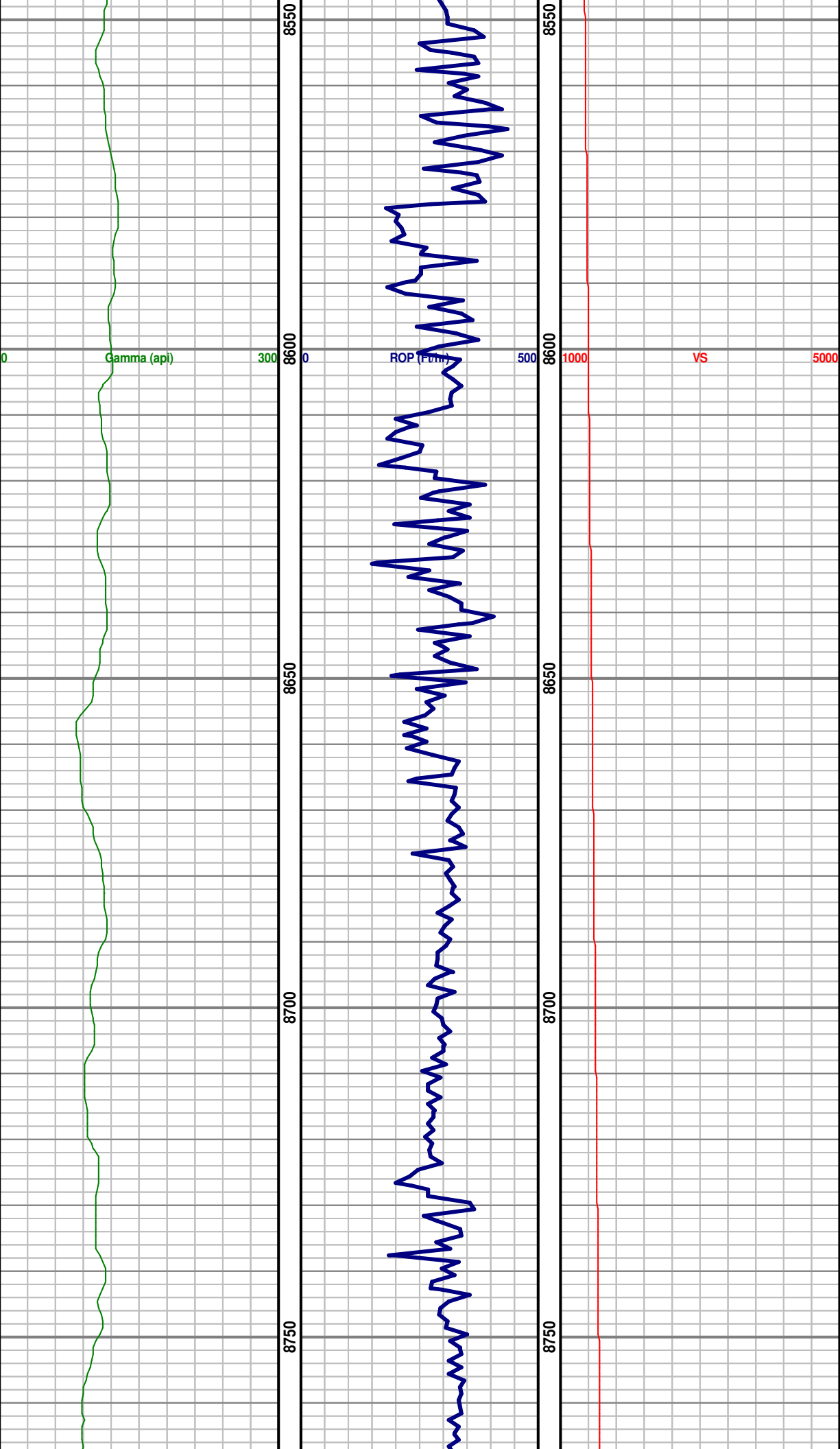


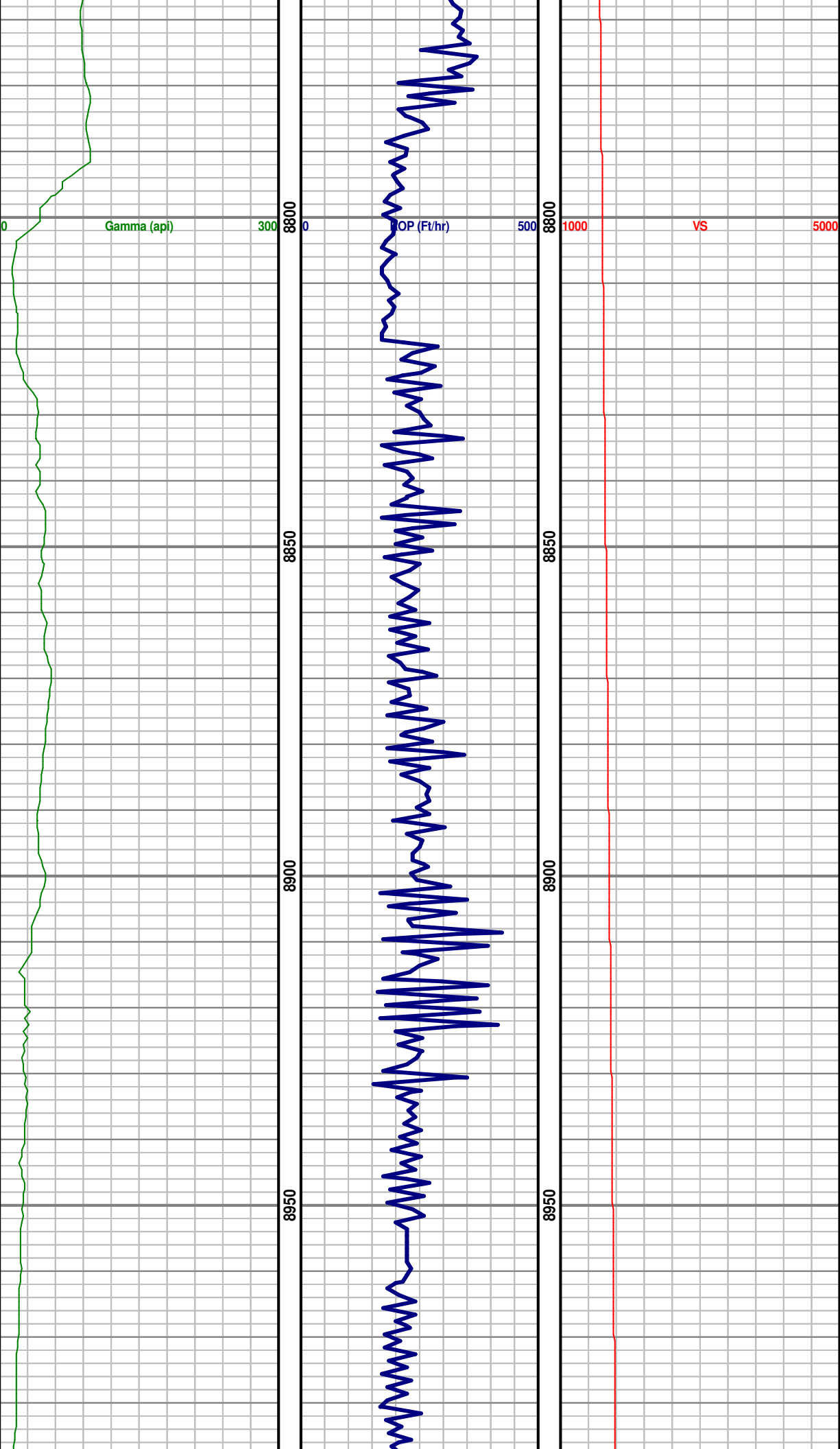


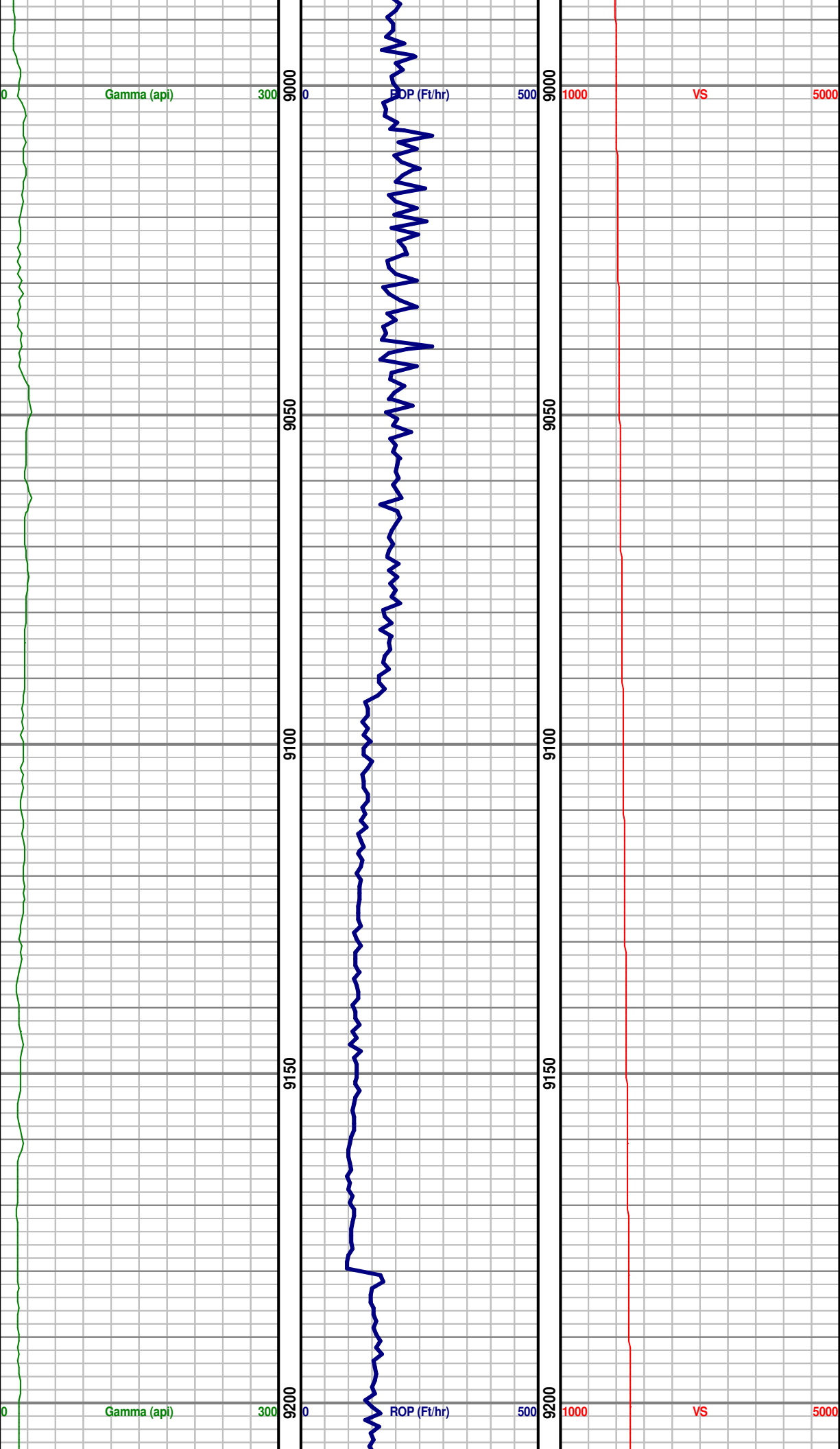


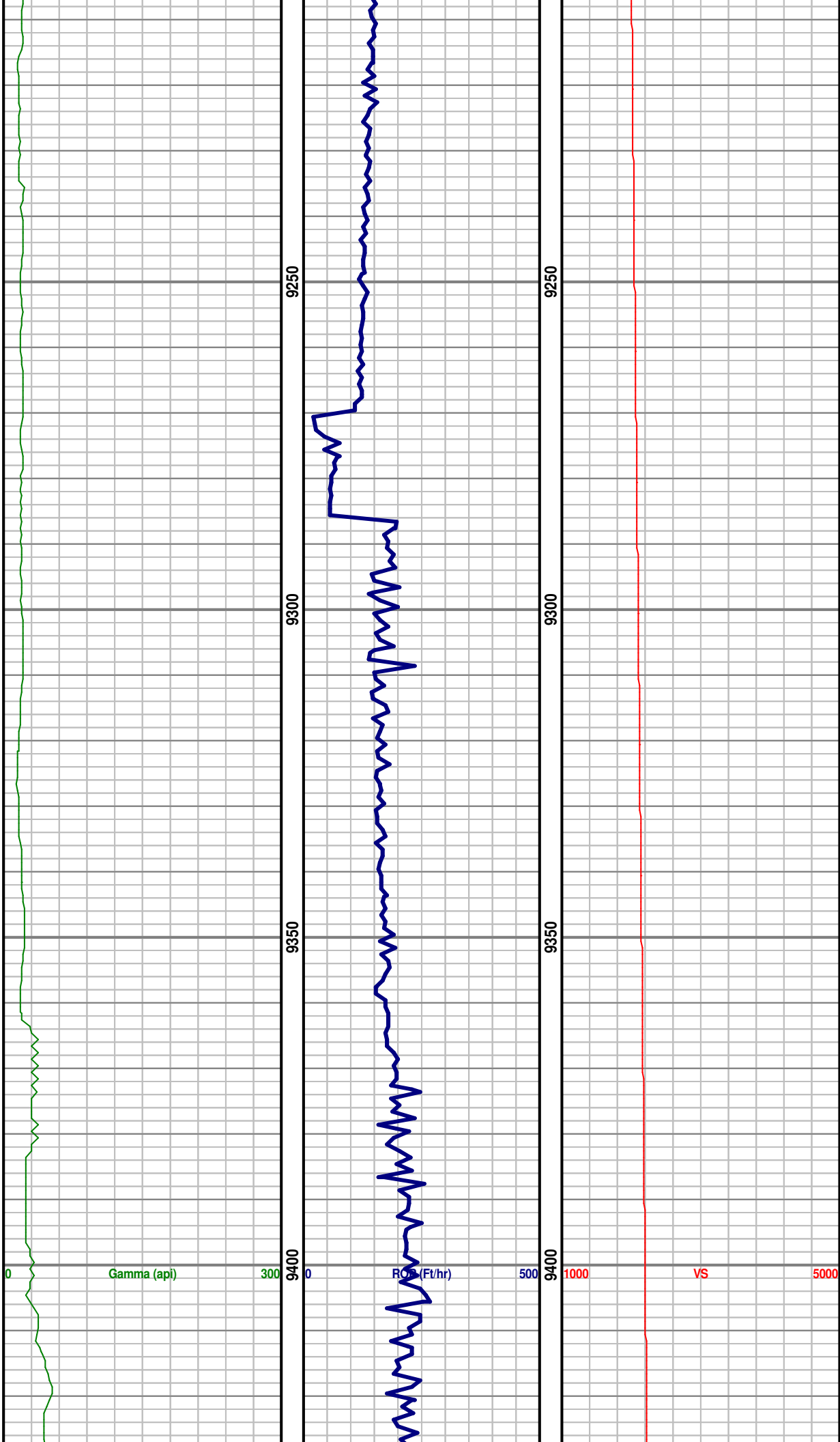




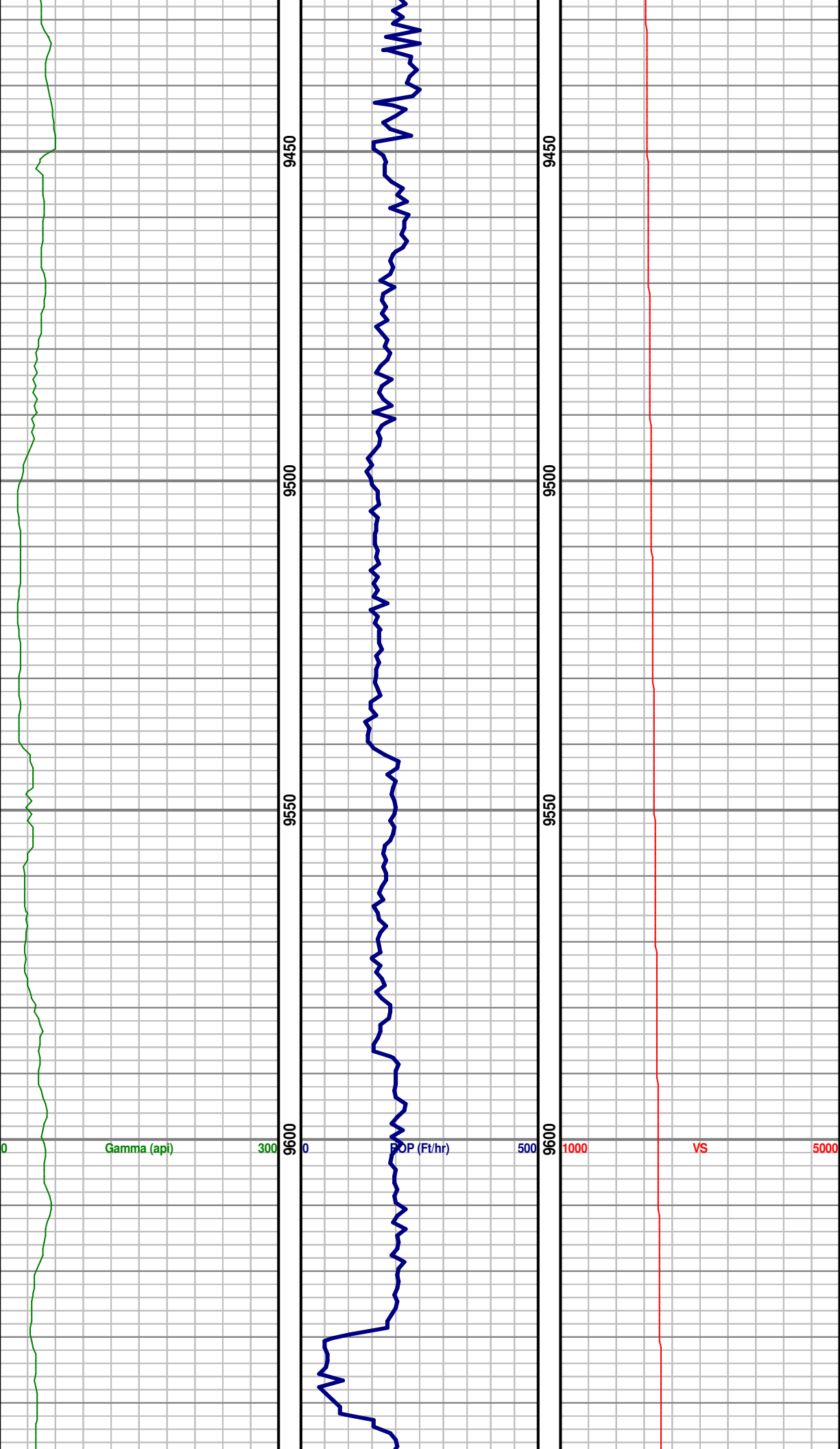


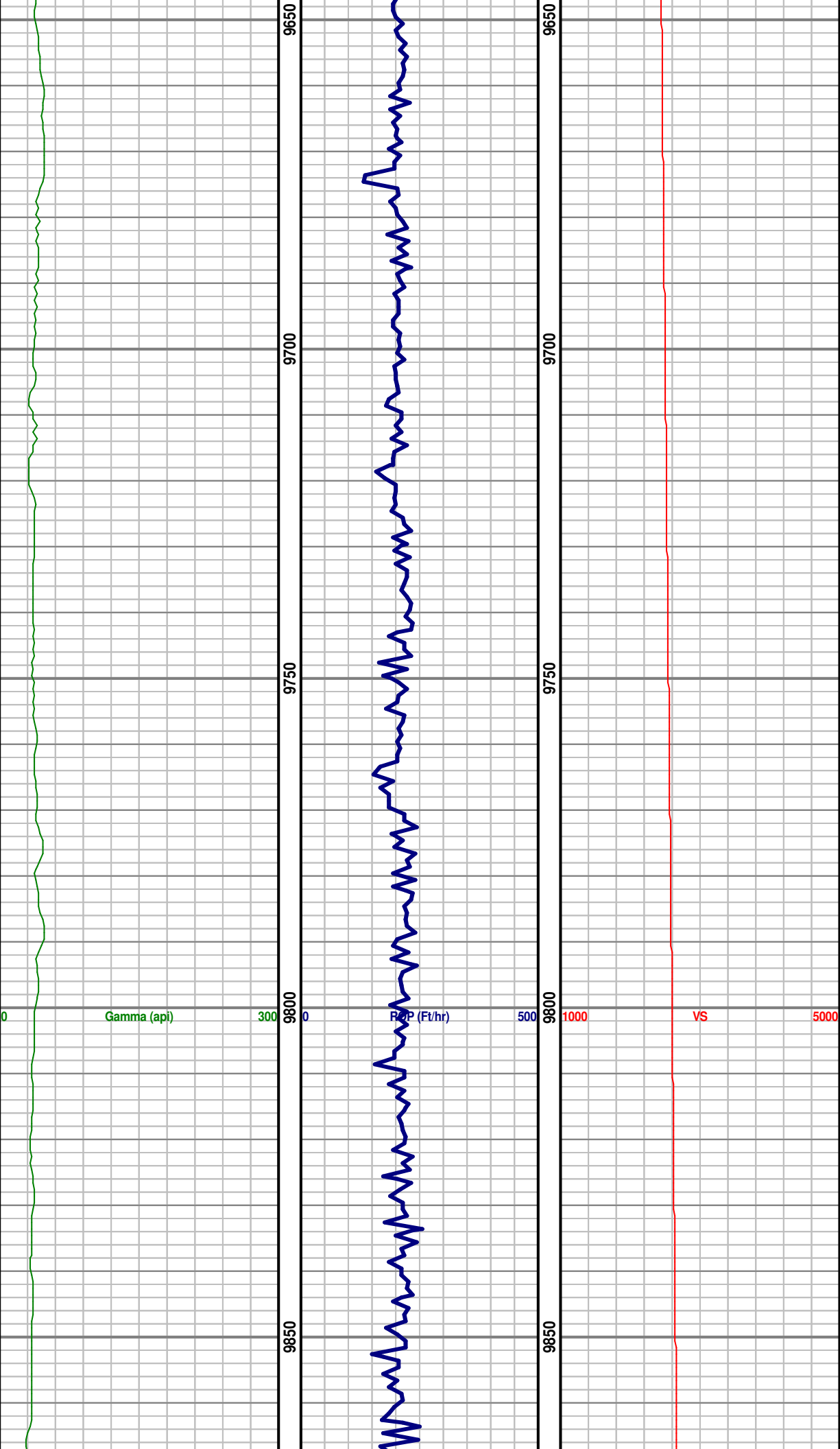


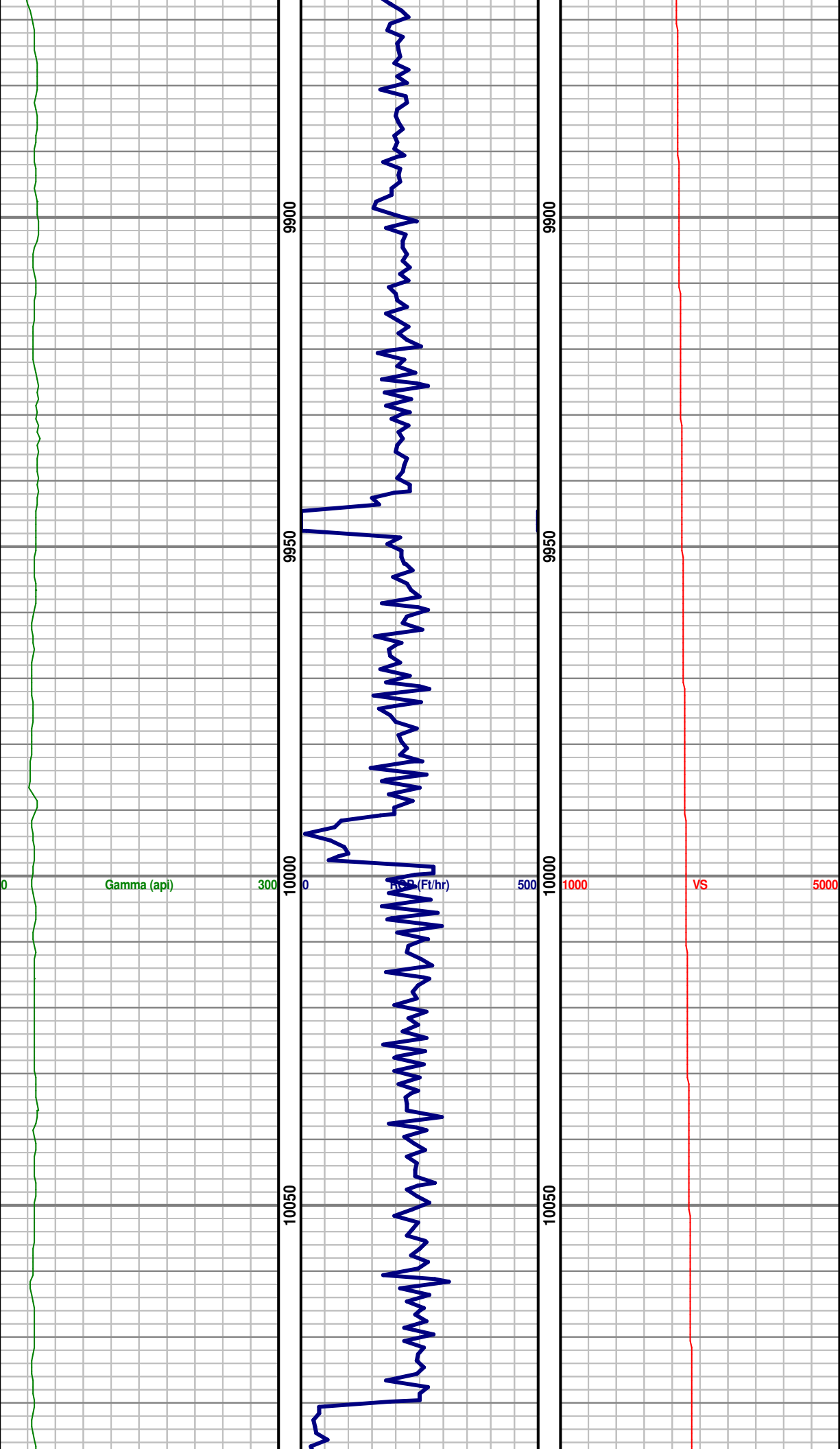


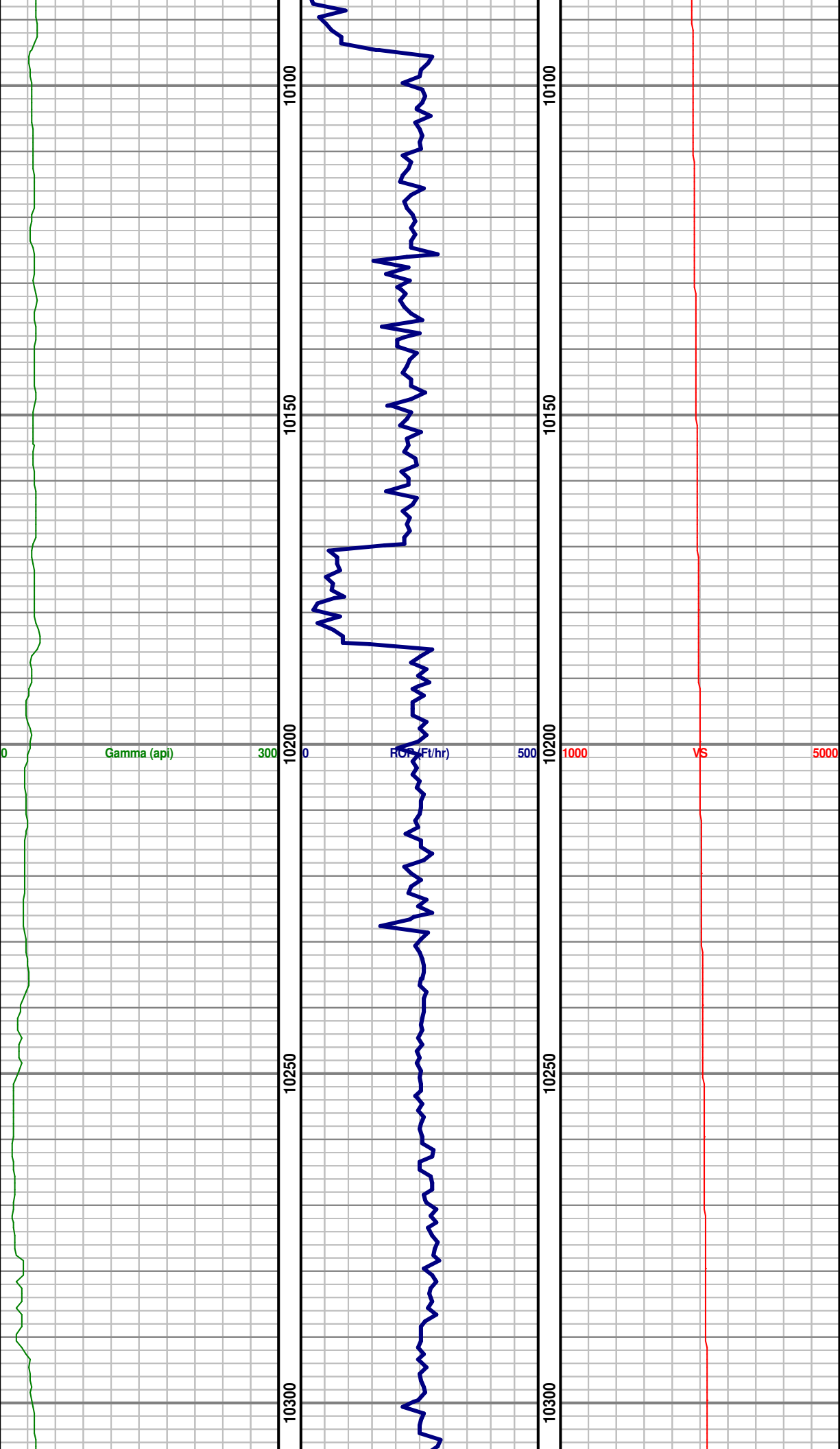


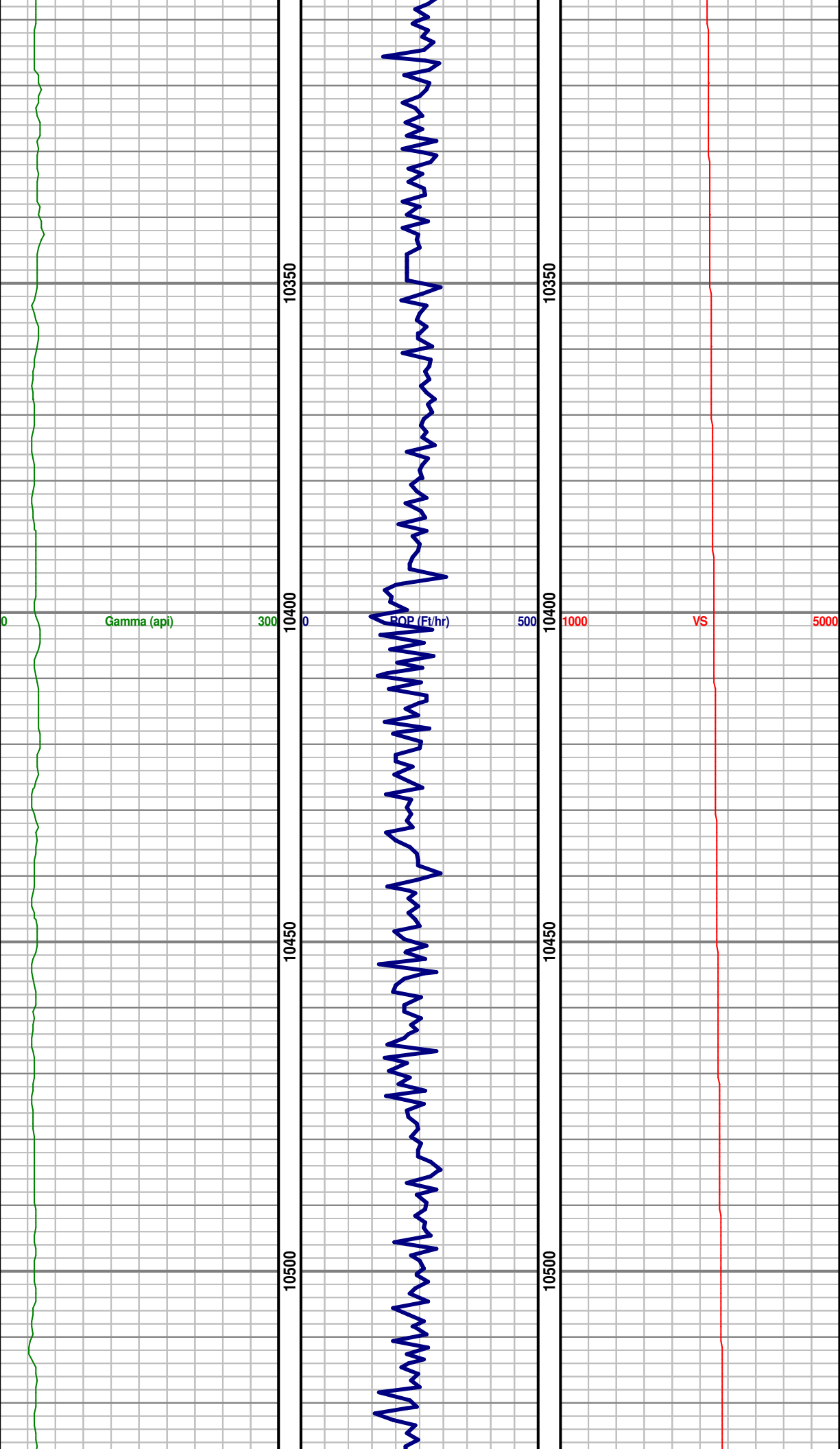


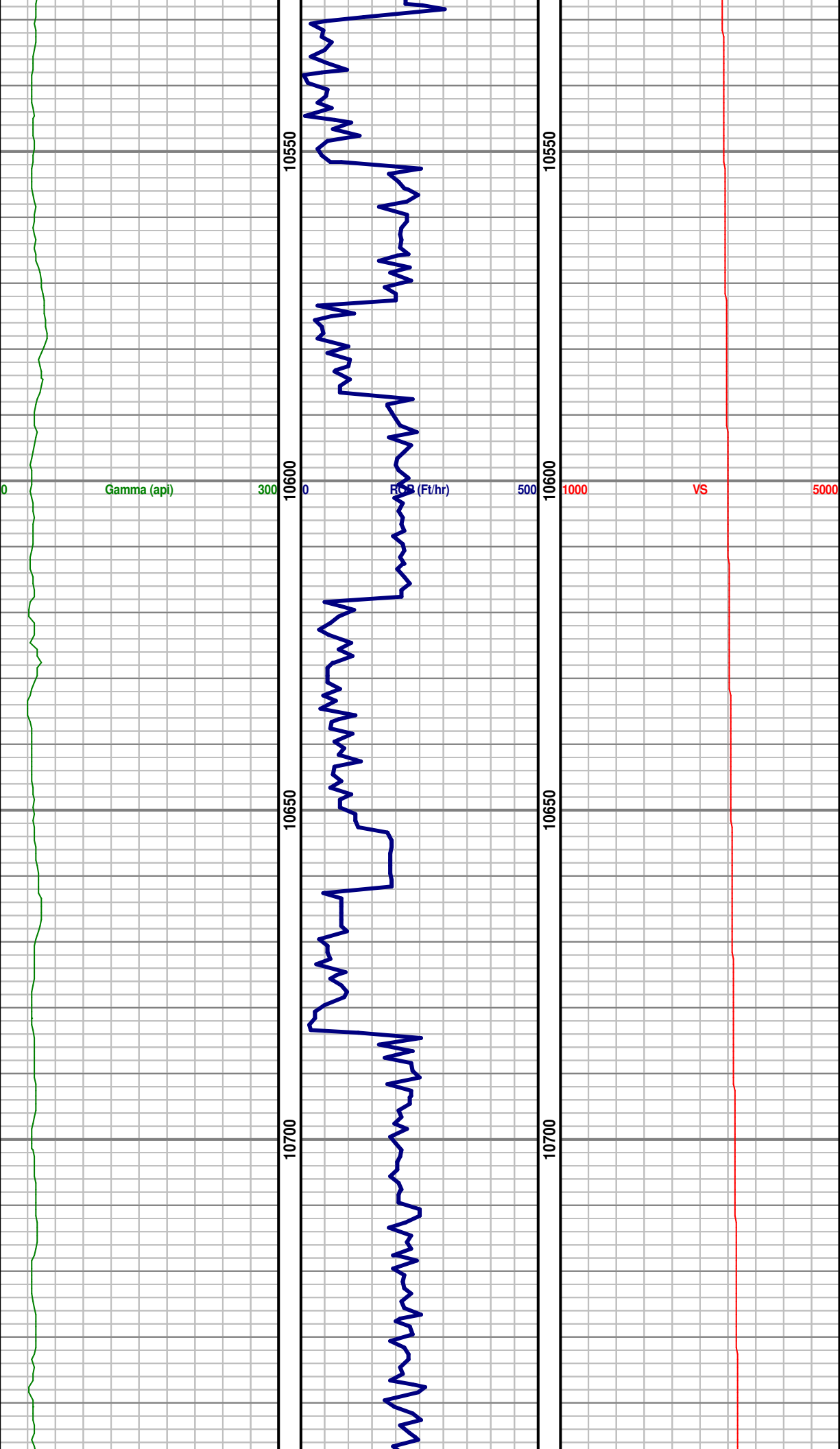


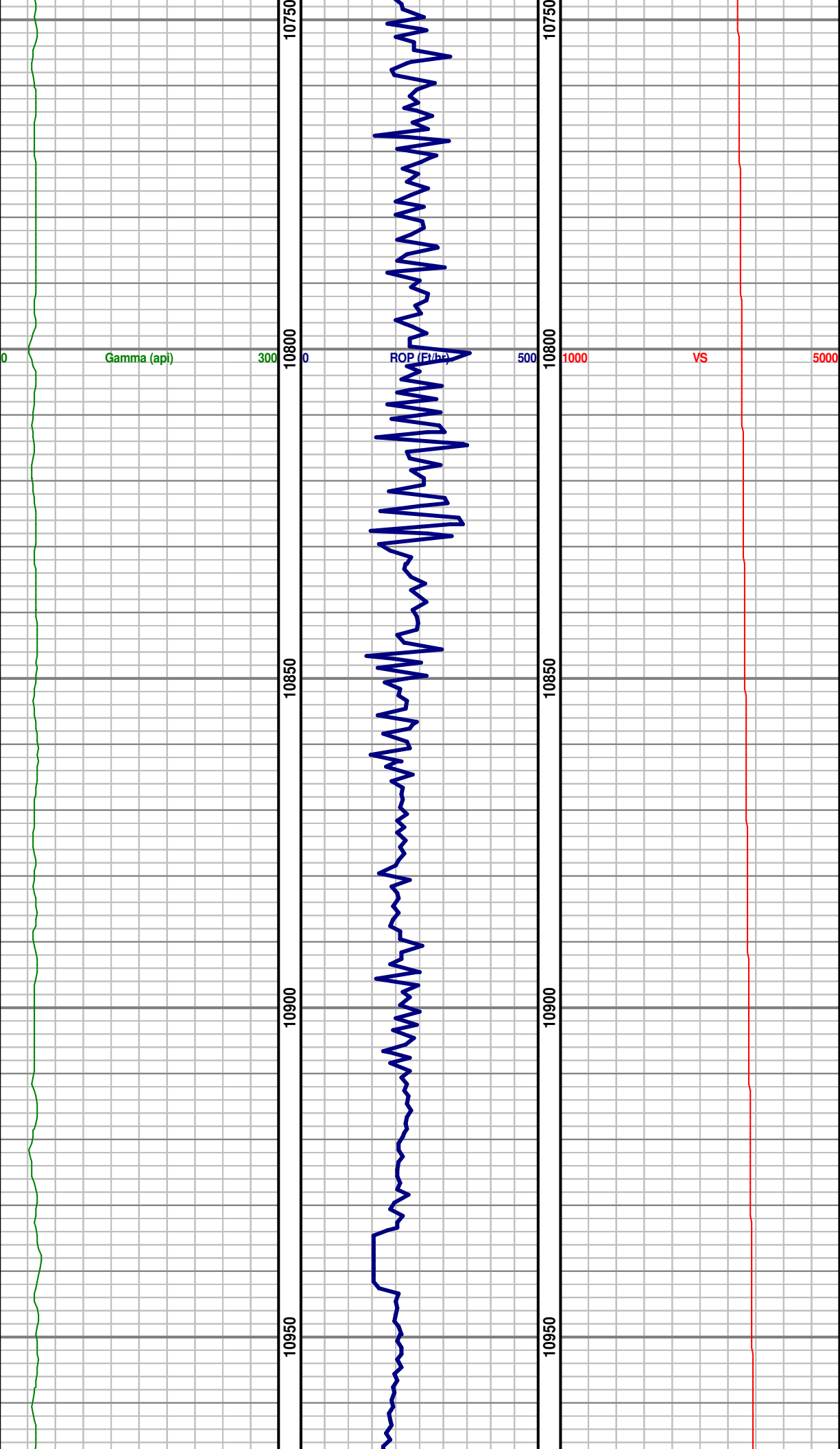


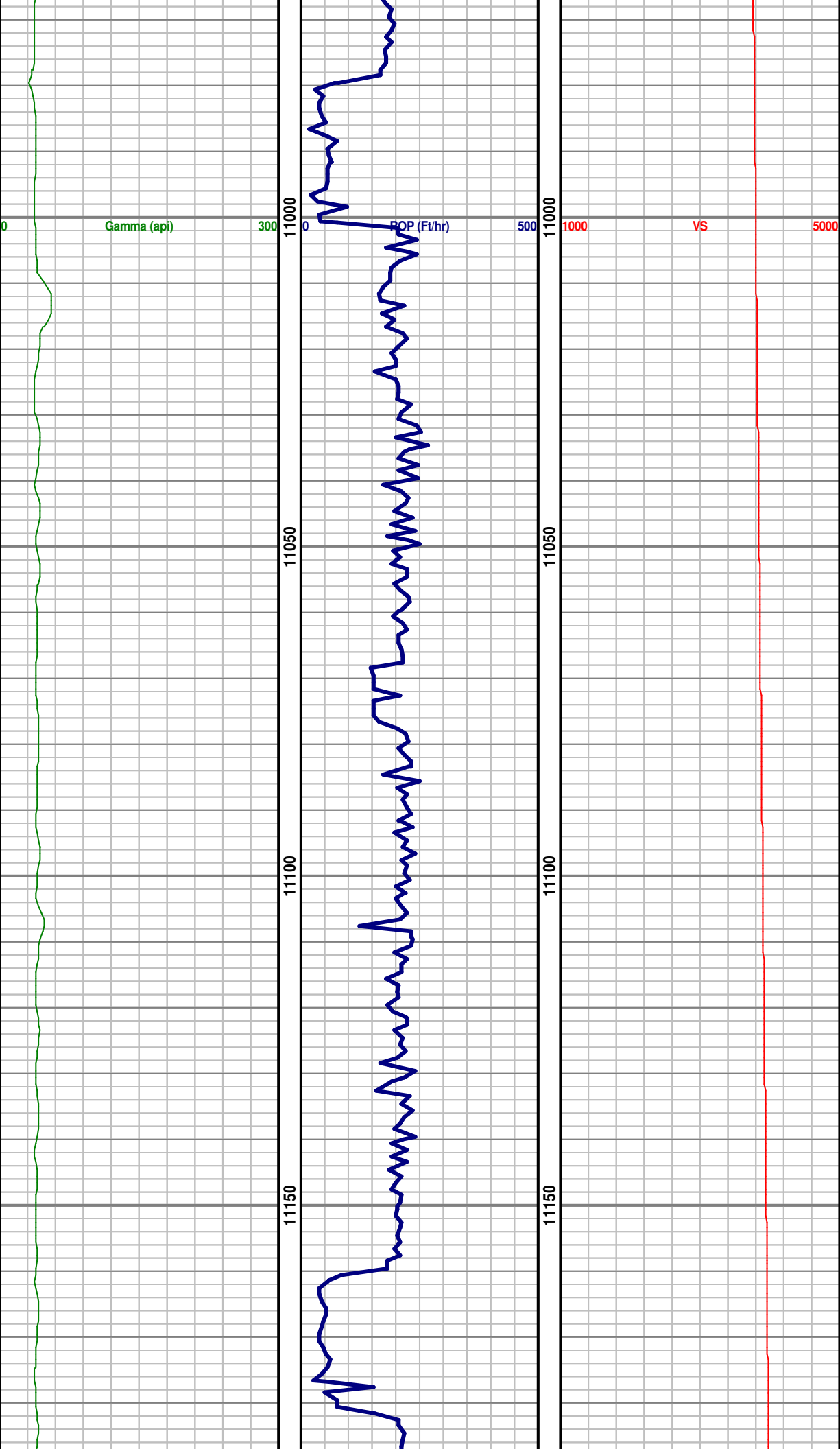




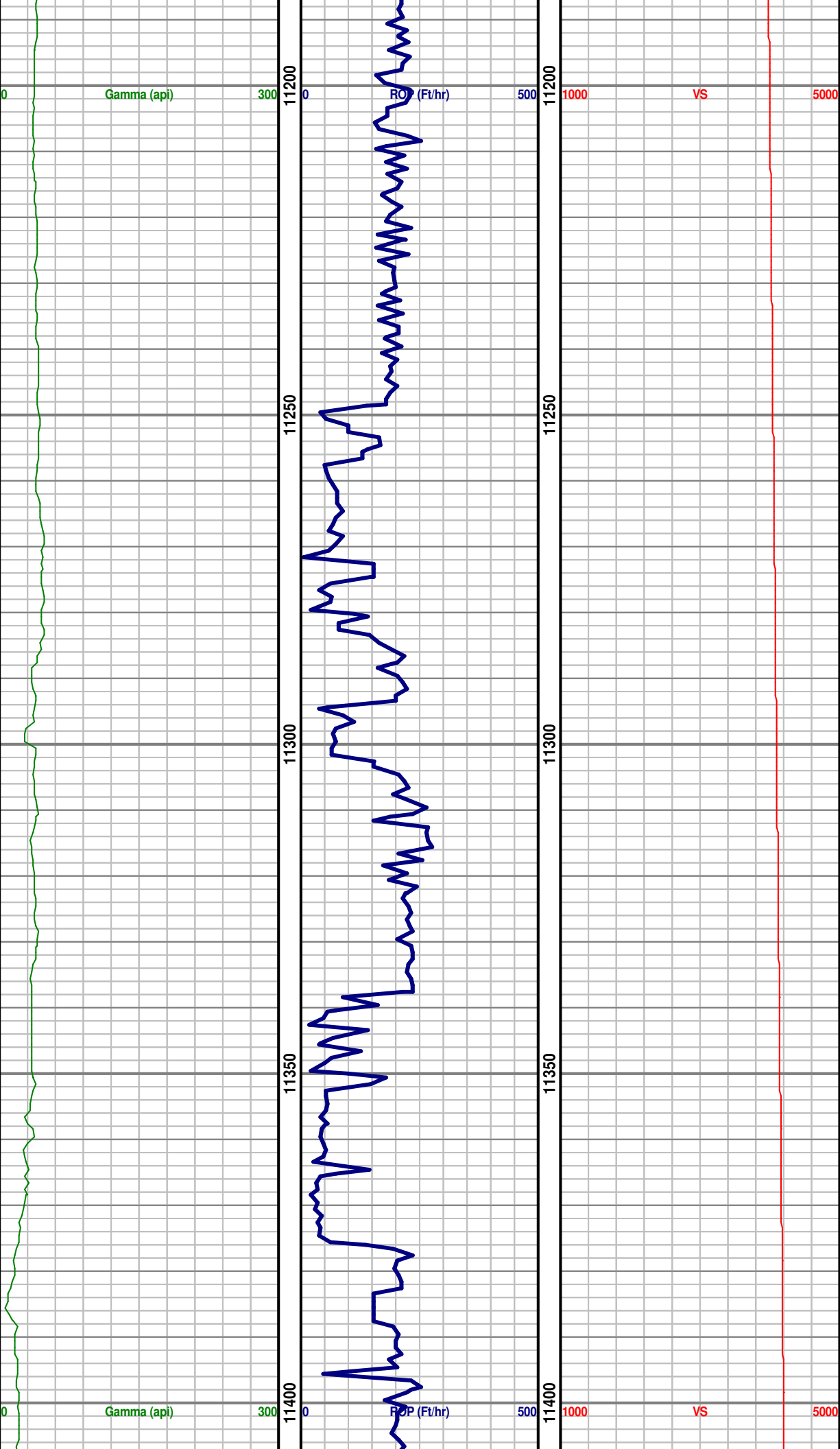


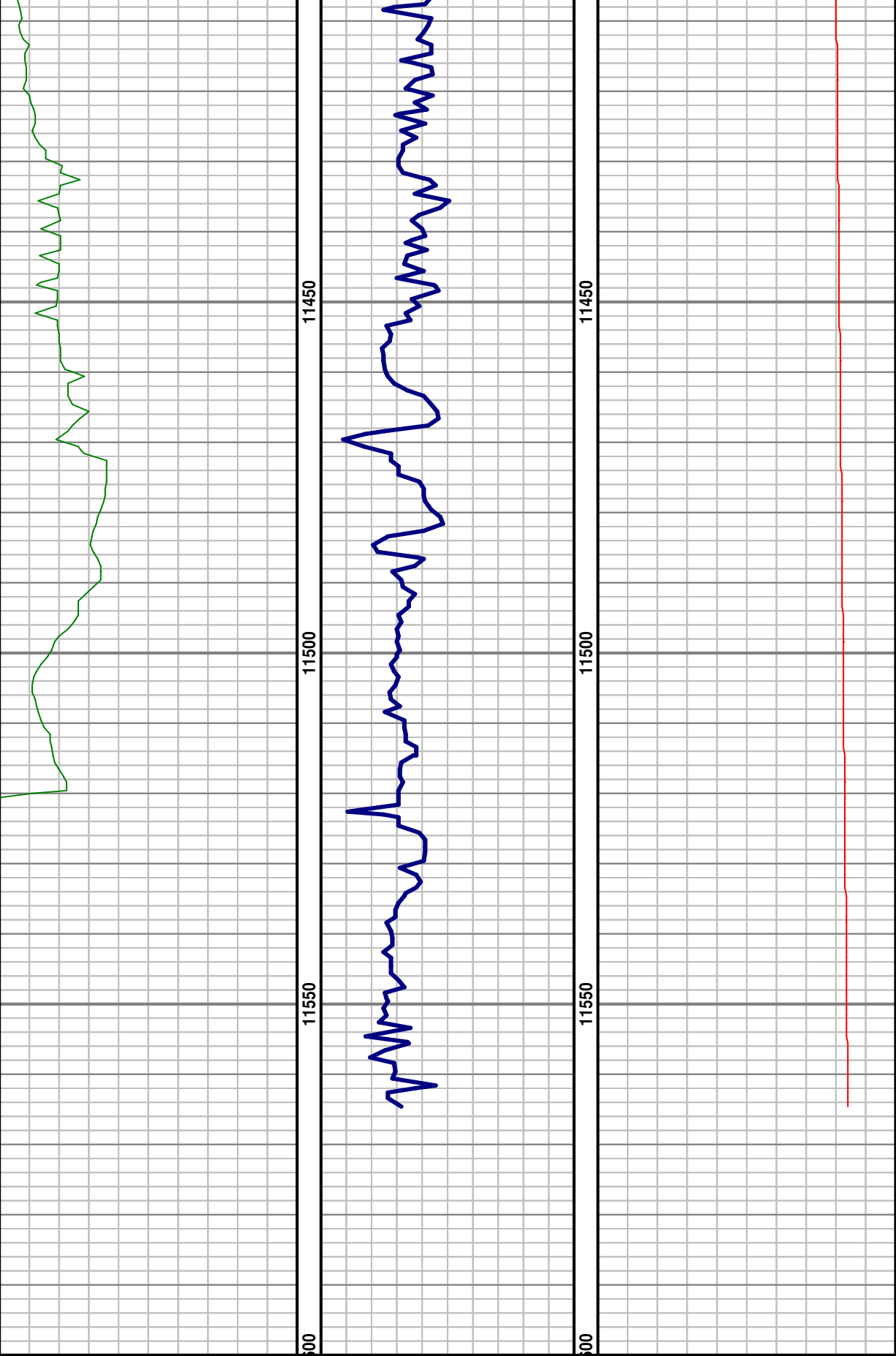












TD WELL @  
11,565' MD  
(7,257.6' TVD;  
4,359.8' VS)  
ON 7/20/2014