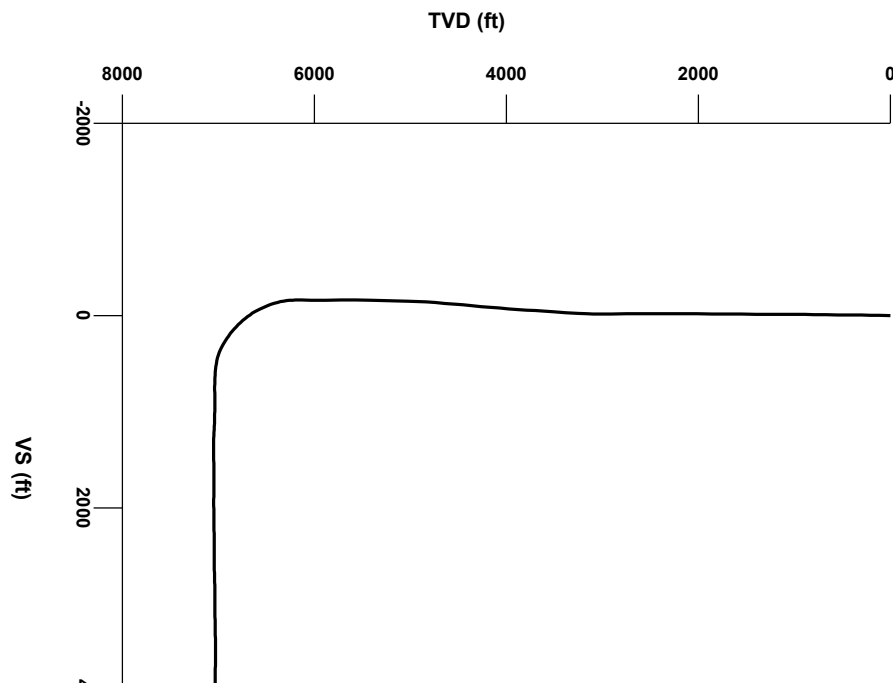
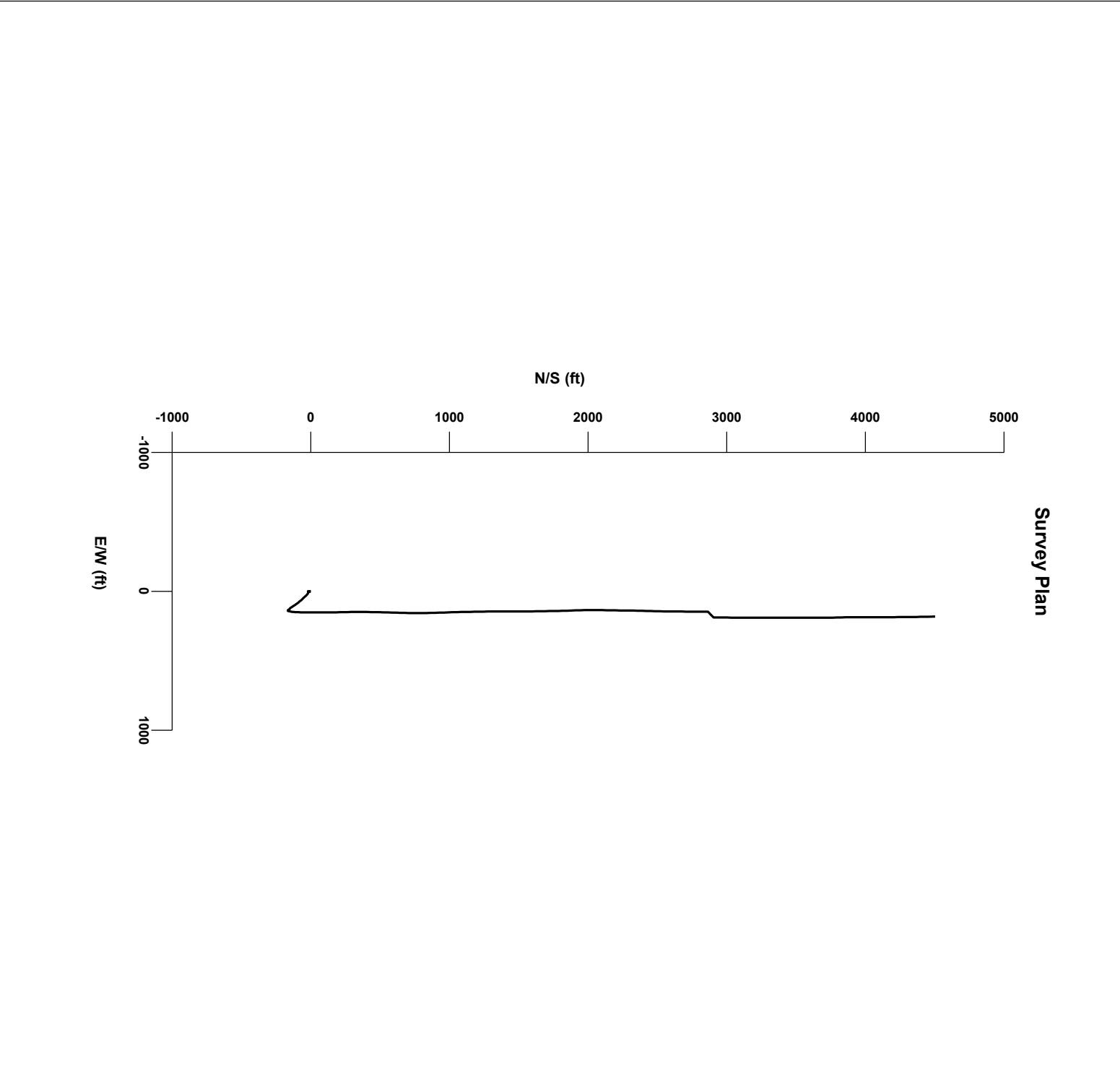
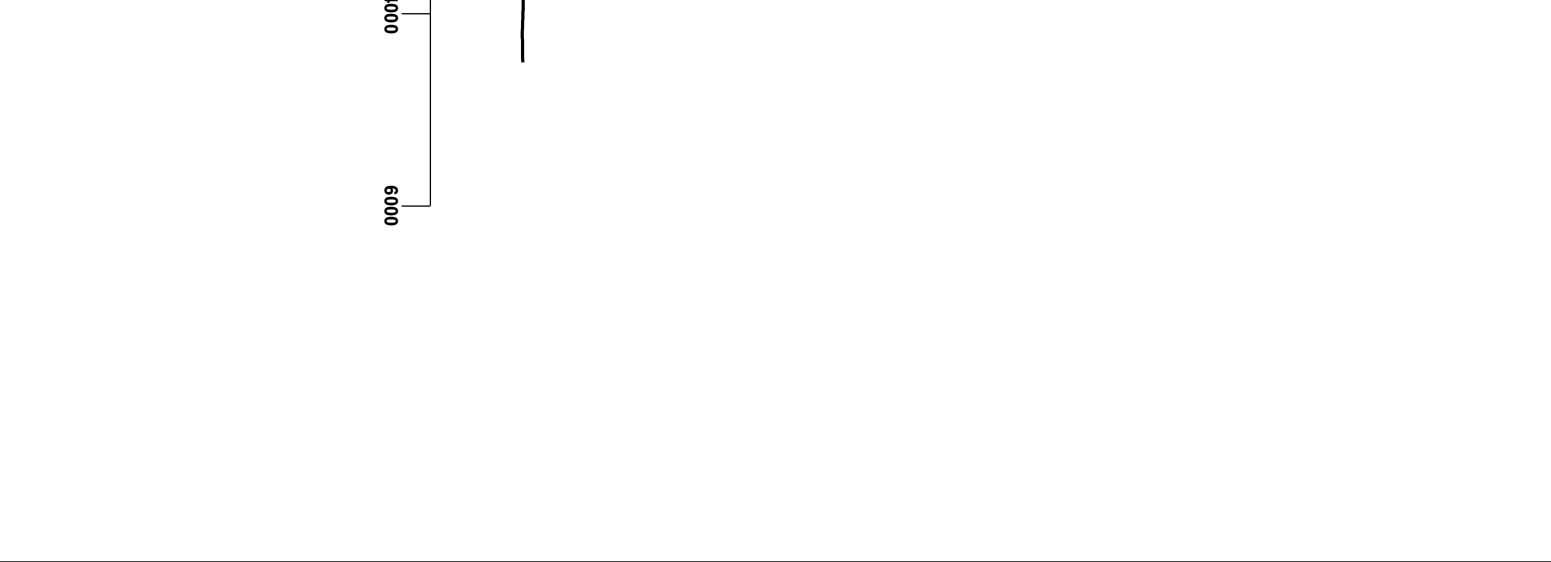




LOG created using LPLLOT VH Version 3.0, June 24, 2013, Copyright (C) 1999-2009 Pason Systems Corp.

OPERATOR: PDC ENERGY
WELL: WASTE MANAGEMENT 2L-441
LOCATION: SWSW SEC 2, 2N, 64W, 6TH
COUNTY: WELD
STATE: COLORADO
SPOT: 230' FSL x 680' FWL
ELEVATION: GL 4,939' KB 4,954'
FIELD: WATTENBERG
SPUD DATE: 6/15/2013
TD DATE: 6/24/2013
DATES LOGGED: 6/18/2013 - 6/24/2013
DEPTHS LOGGED: 6,300' - 11,379'
LOGGERS: K. DONAHUE, S. HAMPTON& W. HOWLAND
DRILLING FLUID: LSND
DRILLING RIG: ENSIGN 14
API: 05-123-36953-0000
LOG TYPE: BUILD & LATERAL (CODELL)
SCALE: 1:240 (5 inches per 100 feet)
REMARKS: WELLSITE GEOLOGICAL SERVICES PROVIDED BY COLUMBINE LOGGING, INC.





Chalk

Shaly Sandstone

Limestone

Shaly Siltstone

Marl

Silty Shale

Sandstone

ENGINEERING SYMBOLS

▲

Casing

◉

Connection Gas

◼

Midnight Depth

▶

Casing

←

Arrow

↗

Reverse Fault

◻

Connection

◼

Midnight Depth

→

Arrow

SLIDE/ROTATE

3

ROP

MIN/FT

IN 9.8/41 OUT 9.8/42

DEPTH (FEET)

6300

10

20

30

40

50

60

70

80

90

6400

10

GAS

UNITS

6000

0

ppm

600000

0

ppm

600000

0

ppm

600000

0

ppm

600000

COLUMBINE LOGGING INC.

RIGGED UP ON 6/18/2013

MANNED 2-PERSON LOGGING

WITH BLOODHOUND GAS

CHROMATOGRAPH UNIT #0116

2565.76u

C1: 75.5%

C2: 10.6%

C3: 9.4%

C4: 4.4%

96api

96api

96api

MD 6302'

INC 8.0°

AZM 11.1°

TVD 6292.1'

MD 6334'

INC 9.2°

AZM 12.3°

TVD 6323.7'

MD 6365'

INC 11.0°

AZM 11.8°

TVD 6354.2'

MD 6397'

INC 13.8°

AZM 11.3°

TVD 6385.5'

BHA #2 INFORMATION

BIT: 8.75" Security

NOZZLES: 5X16

BIT SERIAL NUMBER: # 12167615

SHALY SLTST: lt-mgy, com dk gy, v' gr, sme bndd, p'ly-sbdky, sft-frm, r'ly aren tex, tr' dsm pyr, sl calc, SHALY SS: lt-m gy, sft-frm, sb p'ly, sbnd-sbdky, p-mod srt, m consol, vsi calc, SLTYSH: dk gy, sme brn blk, p'ly - sbp'ly, sft, fts, arg, tr' dsm pyr, NSFOC

SHALY SLTST: lt-mgy, com dk gy, v' gr, sme bndd, p'ly-sbdky, sft-frm, r'ly aren tex, tr' dsm pyr, sl calc, SHALY SS: lt-m gy, sft-frm, sb p'ly, sbnd-sbdky, p-mod srt, m consol, vsi calc, SLTYSH: dk gy, sme brn blk, p'ly - sbp'ly, sft, fts, arg, tr' dsm pyr, NSFOC

SHALY SLTST: lt-n-gy, p'ly-sbdky, sft-frm, SHALY SS: lt-n-gy, mod srt, m consol, blk, p'ly - sbp'ly, sft,

Gamma

200

6050

0

200

6050

TVD

ft

7050

0

200

6050

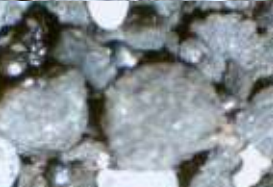


OIL SHOW

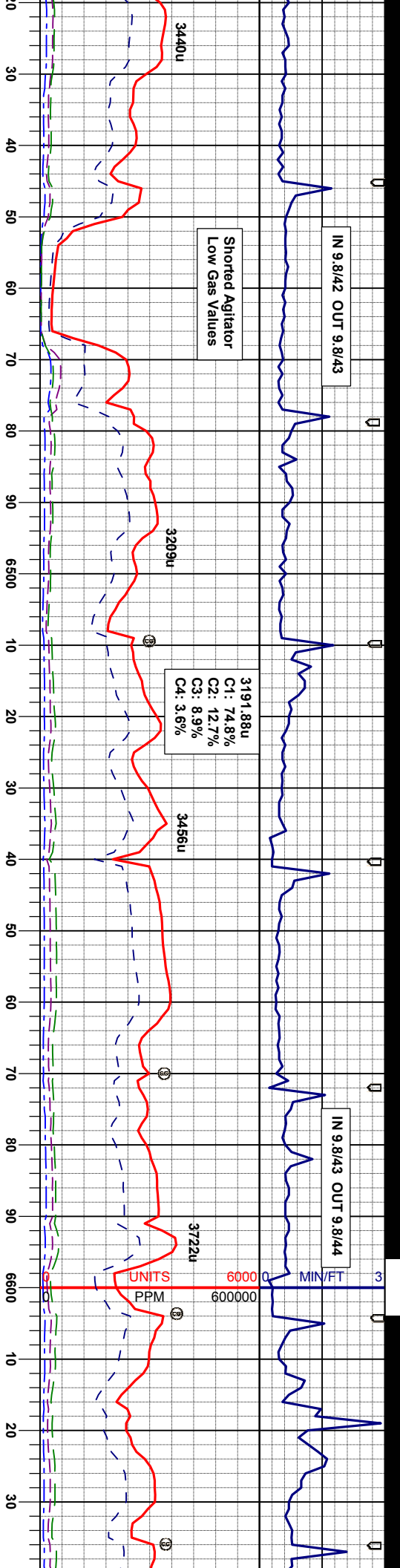
T F G

7050

7050

SAMPLE PHOTOS





Shorted Agitator
Low Gas Values

3191.88u
CI: 74.8%
C2: 12.7%
C3: 8.9%
C4: 3.6%

UNITS
PPM

SHAL Y SLTST: lk-mgy, com dk gy, vf gr, sme bndd, pily-sbbiky, sft-fim, rthy aren tex, tr dism pyr, sl calc, SHAL Y SS: lk-m gy, sft-fim, sb pily, sbnd-sbbiky, p-mod srt, m consol, vsi calc, SLTYSH: dk gy, sme bndd, blk, pily - sbpily, sft, fis, arg, tr dism pyr, NSF-OC

SHAL Y SLTST: lk-mgy, com dk gy, vf gr, sme bndd, pily-sbbiky, sft-fim, rthy aren tex, tr dism pyr, sl calc, SHAL Y SS: lk-m gy, sft-fim, sb pily, sbnd-sbbiky, p-mod srt, m consol, vsi calc, SLTYSH: dk gy, sme bndd, blk, pily - sbpily, sft, fis, arg, tr dism pyr, NSF-OC

SLTYSH: dk gy, sme blk, pily - sbpily, frm, fis tex, sl tr dism pyr, SHAL Y SLTST: lk-mgy, com vf gr, sme bndd, pily-sbbiky, sft-fim, rthy aren dism pyr, sl calc, sl tr slow sting lt yel cut, n st

MD 6429'
INC 16.5°
AZM 9.5°
TVD 6416.4'

MD 6461'
INC 19.0°
AZM 6.3°
TVD 6446.8'

MD 6492'
INC 21.3°
AZM 3.7°
TVD 6475.9'

MD 6624'
INC 23.2°
AZM 0.5°
TVD 6505.6'

MD 6556'
INC 24.4°
AZM 1.1°
TVD 6534.8'

MD 6588'
INC 26.2°
AZM 1.8°
TVD 6563.8'

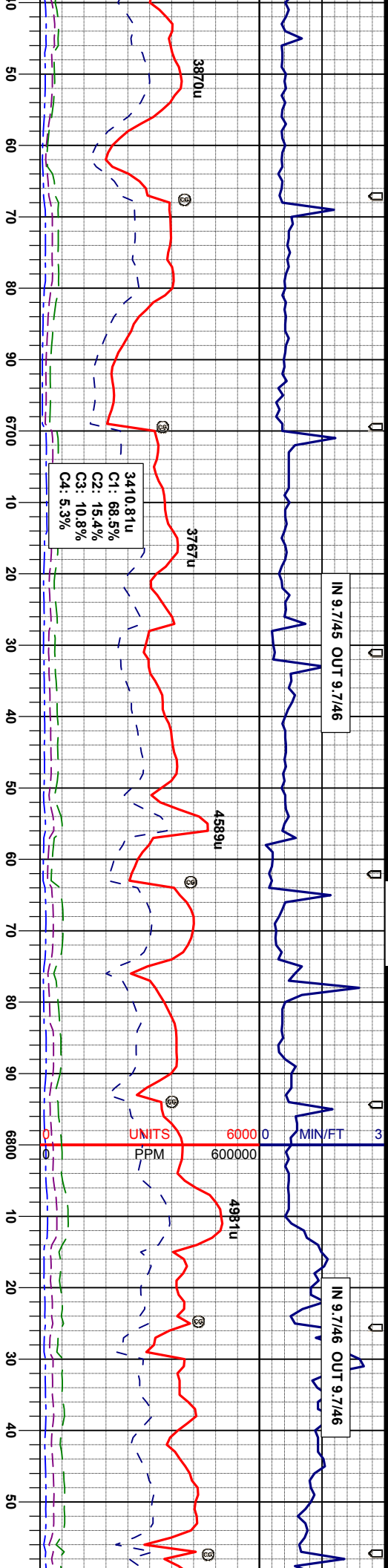
MD 6619'
INC 26.9°
AZM 1.6°
TVD 6591.5'

gy, com dk gy, vf gr, sme bndd, rthy aren tex, tr dism pyr, sl calc, sft-fim, sb pily, sbnd-sbbiky, p-mod srt, m consol, vsi calc, SLTYSH: dk gy, sme bndd, blk, pily - sbpily, sft, fis, arg, tr dism pyr, NSF-OC

SHAL Y SLTST: lk-mgy, com dk gy, vf gr, sme bndd, pily-sbbiky, sft-fim, rthy aren tex, tr dism pyr, sl calc, SHAL Y SS: lk-m gy, sft-fim, sb pily, sbnd-sbbiky, p-mod srt, m consol, vsi calc, SLTYSH: dk gy, sme bndd, blk, pily - sbpily, sft, fis, arg, tr dism pyr, NSF-OC

7050 ft





SLTYSH: dk gy, sme blk, pily - spilly, frm, fis, arg, gt
tex, sl tr dism pyr, SHALY SLTST: lt-mgy, com dk gy,
vl gr, sme brnd, pily-sbdky, stl-frm, rthy aren tex, tr
dism pyr, sl calc: sl tr slow sting lt yel cut, n sin

SLTYSH: dk gy, sme blk, pily - spilly, frm, fis, arg, gt
tex, sl tr dism pyr, SHALY SLTST: lt-mgy, com dk gy,
vl gr, sme brnd, pily-sbdky, stl-frm, rthy aren tex, tr
dism pyr, sl calc: sl tr slow sting lt yel cut, n sin

SLTYSH: dk gy, sme blk, pily - spilly, frm, fis, arg, gt
tex, sl tr dism pyr, SHALY SLTST: lt-mgy, com dk gy,
vl gr, sme brnd, pily-sbdky, stl-frm, rthy aren tex, tr
dism pyr, sl calc: sl tr slow sting lt yel cut, n sin

CHK: lt-m gy, stl, sb pily & blk, rthy-sb wxy istr, mot &
lam tex, v calc, r fos, n fltor, sting br yel cut, lt yel sin
MRL: m-dk gy, stl, sb blk, rthy istr, mot tex v calc w/
org mat

CHK: lt-m gy, stl, sb pily & blk, rthy-sb wxy istr, mot &
lam tex, v calc, r fos, n fltor, sting br yel cut, lt yel sin
MRL: m-dk gy, stl, sb blk, rthy istr, mot tex v calc w/
org mat

Sharon Spgs top @
MD6.682' / TVD 6.646'

MD 6651'
INC 29.1°
AZM 1.2°
TVD 6619.8'

MD 6683'
INC 32.5°
AZM 0.7°
TVD 6647.2'

MD 6714'
INC 35.9°
AZM 0.4°
TVD 6672.9'

MD 6746'
INC 38.4°
AZM 359.7°
TVD 6698.4'

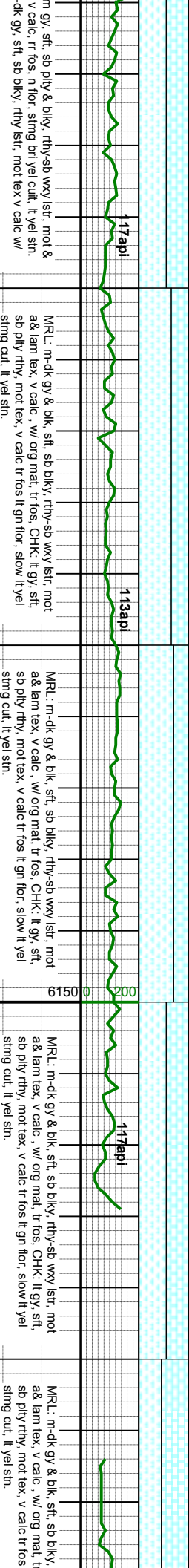
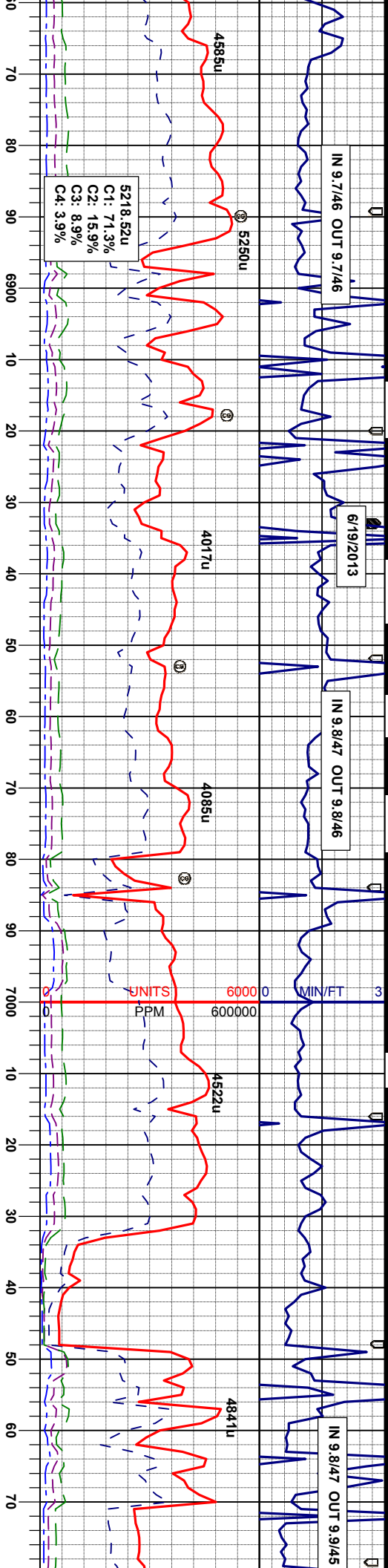
MD 6777'
INC 38.7°
AZM 0.9°
TVD 6722.6'

Niobrara A top @
MD6.813' / TVD 6.750'

MD 6841'
INC 42.4°
AZM 359.1°
TVD 6771.3'

MD 6809'
INC 40.4°
AZM 0.5°
TVD 6747.3'





MD 6872'
INC 44.8°
AZM 358.6°
TVD 6793.7'

MD 6904'
INC 46.1°
AZM 359.5°
TVD 6816.2'

MD 6936'
INC 47.0°
AZM 0.0°
TVD 6838.2'

MD 6968'
INC 50.1°
AZM 359.3°
TVD 6859.4'

MD 6999'
INC 54.0°
AZM 359.0°
TVD 6878.4'

MRL: m-dk gy & blk, sft, sb blk, rthy-sb wxy lst, mot a& lam tex, v calc, w/ org mat, tr fos, CHK; lt gy, sft, sb ply rthy, mot tex, v calc tr fos lt gn flr, slow lt yel string cut, lt yel sn.

MRL: m-dk gy & blk, sft, sb blk, rthy-sb wxy lst, mot a& lam tex, v calc, w/ org mat, tr fos, CHK; lt gy, sft, sb ply rthy, mot tex, v calc tr fos lt gn flr, slow lt yel string cut, lt yel sn.

MRL: m-dk gy & blk, sft, sb blk, rthy-sb wxy lst, mot a& lam tex, v calc, w/ org mat, tr fos, CHK; lt gy, sft, sb ply rthy, mot tex, v calc tr fos lt gn flr, slow lt yel string cut, lt yel sn.

MRL: m-dk gy & blk, sft, sb blk, rthy-sb wxy lst, mot a& lam tex, v calc, w/ org mat, tr fos, CHK; lt gy, sft, sb ply rthy, mot tex, v calc tr fos lt gn flr, slow lt yel string cut, lt yel sn.

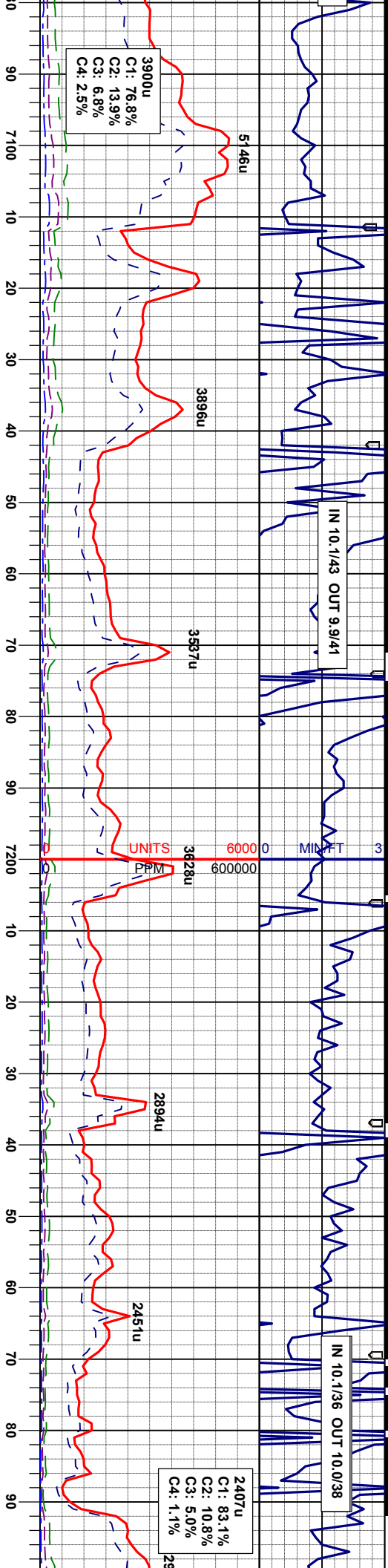
TVD SCALE CHANGE
6150 -7150 TVD

MD 7031'
INC 57.1°
AZM 359.0°
TVD 6896.5'

MD 7063'
INC 56.6°
AZM 358.6°
TVD 6914.0'

Niobrara B top @
MD6,957' TVD 6,852'



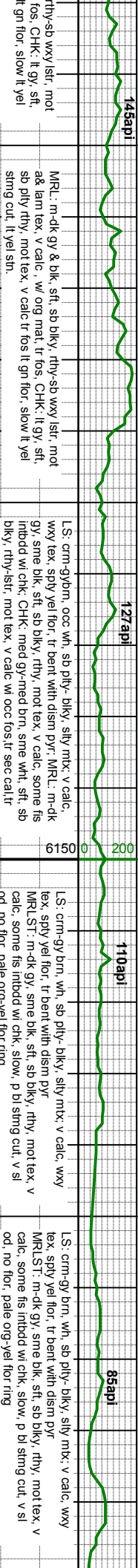


IN 10.1/43 OUT 9.9/41

IN 10.1/36 OUT 10.0/38

3900u
C1: 76.8%
C2: 13.9%
C3: 6.8%
C4: 2.5%

2407u
C1: 83.1%
C2: 10.8%
C3: 5.0%
C4: 1.1%



145api
MR.L: m-dk gy & blk, sft, sb biky, rthy-sb wxy lsir, mot
a& lam tex, v calc, w/ org mat, tr fos, CHK: lt gy, sft,
sb pily rthy, mot tex, v calc tr fos lt gn flor, slow lt yel
stimg cut, lt yel sn.

127api
LS: crm-gybm, occ wh, sb pily- biky, silty mtk, v calc,
wxy tex, sply yel flor, tr bent with dism pyr, MR.L: m-dk
gy, sme blk, sft, sb biky, rthy, mot tex, v calc, some fis
intbd wi chk, CHK: med gy-med brn, sme wnt, sft, sb
biky, rthy-lstr, mot tex, v calc w/ occ fos tr sec cal tr
pyr, med fast-fast, bl stimg cut, v sl od, no flor, pale org
-yel flor ring, ft tan vis lt ring

110api
LS: crm-gy brn, wh, sb pily- biky, silty mtk, v calc, wxy
tex, sply yel flor, tr bent with dism pyr
MR.L: m-dk gy, sme blk, sft, sb biky, rthy, mot tex, v
calc, some fis intbd wi chk, slow, p bl stimg cut, v sl
od, no flor, pale org-yel flor ring

85api
LS: crm-gy brn, wh, sb pily- biky, silty mtk, v calc, wxy
tex, sply yel flor, tr bent with dism pyr
MR.L: m-dk gy, sme blk, sft, sb biky, rthy, mot tex, v
calc, some fis intbd wi chk, slow, p bl stimg cut, v sl
od, no flor, pale org-yel flor ring

Niobrara C top @
MD 7,108' / TVD 6,938'

MD 7094'
INC 57.3°
AZM 359.0°
TVD 6930.9'

MD 7126'
INC 58.5°
AZM 359.0°
TVD 6948.0'

MD 7158'
INC 60.7°
AZM 359.5°
TVD 6964.1'

MD 7189'
INC 64.6°
AZM 359.8°
TVD 6978.4'

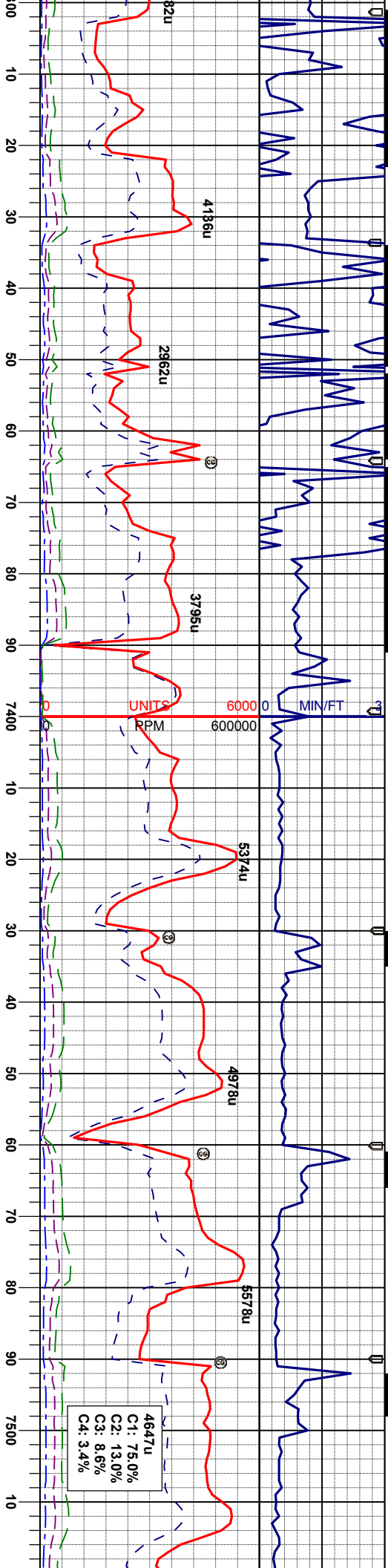
MD 7221'
INC 68.4°
AZM 0.5°
TVD 6991.1'

MD 7253'
INC 72.3°
AZM 0.7°
TVD 7001.9'

MD 7284'
INC 75.2°
AZM 1.1°
TVD 7010.6'

Fort Hayes @
MD 7,290' / TVD 7,012'





42api

98api

130api

L.S: tan , crm and buff wh, sft-m frm, sb ply & blkly, dull -semi dull luster, mic xl tex, v calc, w/ occ fos, sl tr lt gn flor, pred lt yel resd ring cut, n stn

L.S: tan , crm and buff wh, sft-m frm, sb ply & blkly, dull -semi dull luster, mic xl tex, v calc, w/ occ fos, sl tr lt gn flor, pred lt yel resd ring cut, n stn

L.S: tan , crm and buff wh, sft-m frm, sb ply & blkly, dull -semi dull luster, mic xl tex, v calc, w/ occ fos, sl tr lt gn flor, pred lt yel resd ring cut, n stn

BHA #3 INFORMATION
BIT: 6.125" Smith
NOZZLES: ?
BIT SERIAL NUMBER: # JG3453

MD 7316' INC 78.1° AZM 1.1° TVD 7017.9'

MD 7343' INC 80.5° AZM 1.4° TVD 7022.9'

MD 7376' INC 83.4° AZM 1.6° TVD 7027.6'

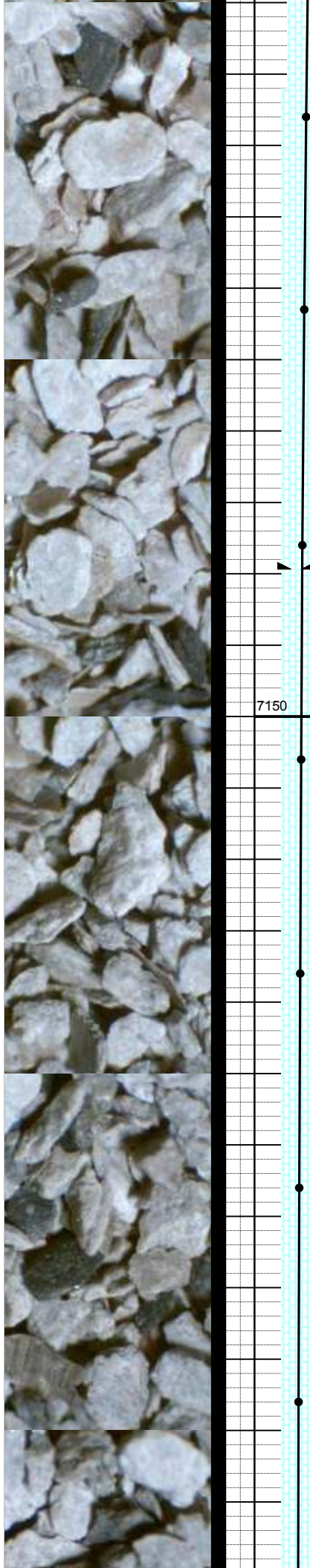
7" Intermediate Casing Set To 7379'

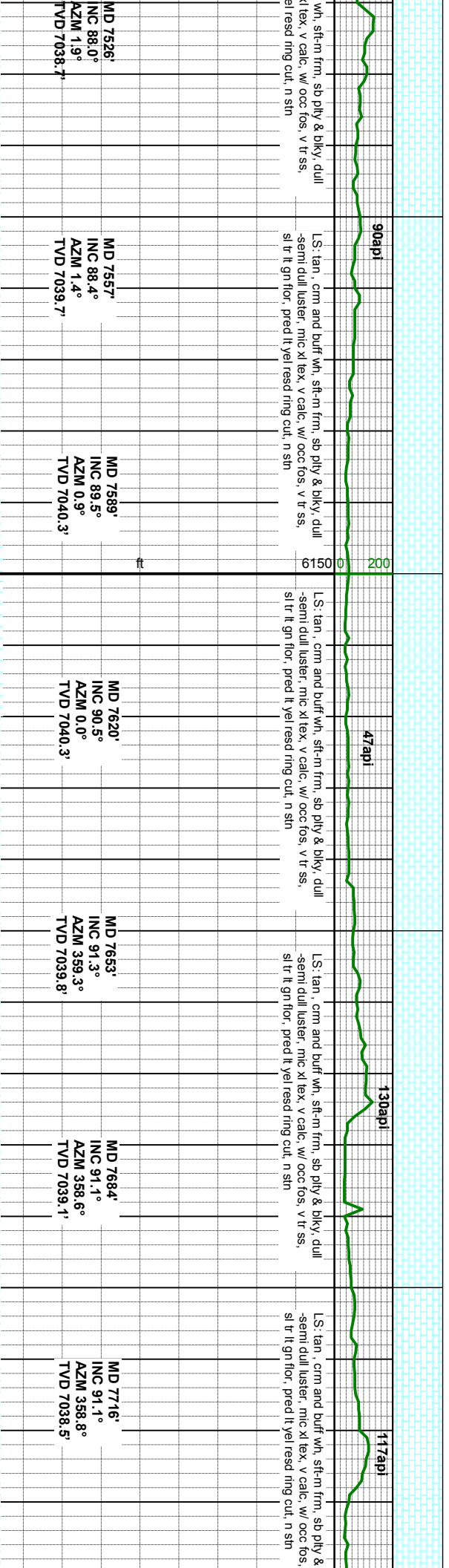
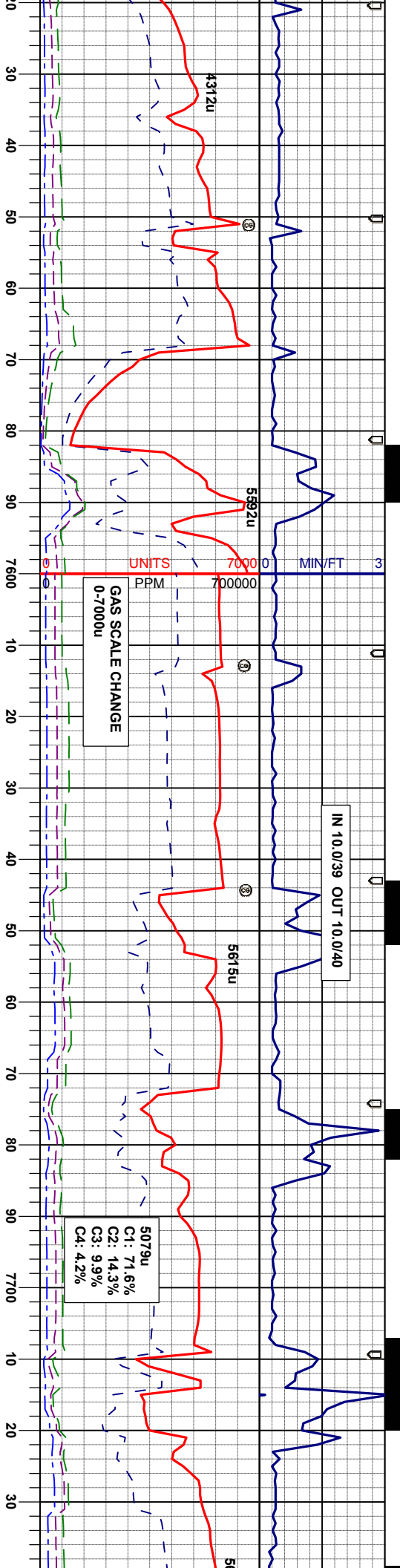
MD 7406' INC 84.7° AZM 1.8° TVD 7030.7'

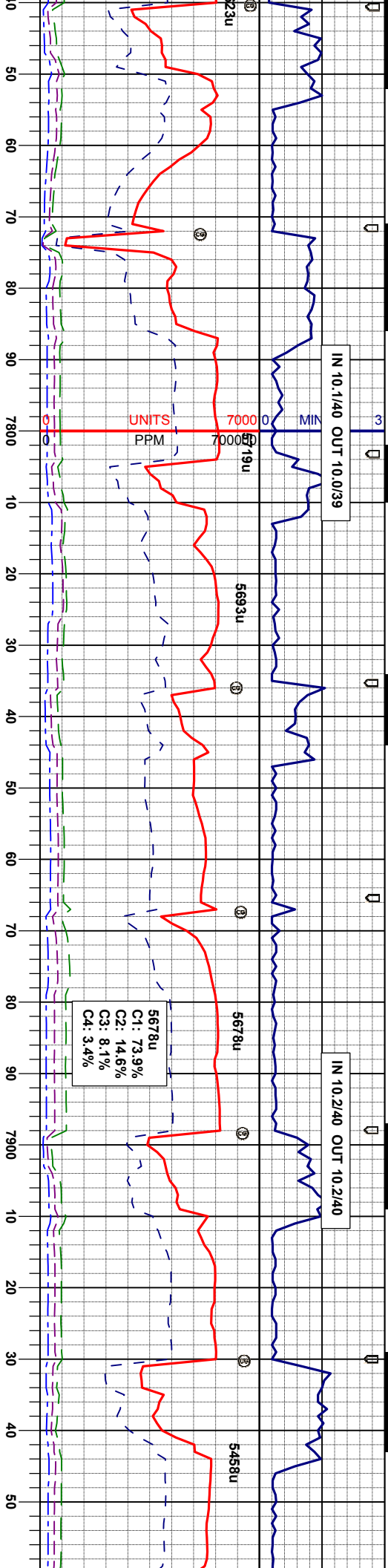
MD 7436' INC 85.1° AZM 1.2° TVD 7033.4'

MD 7466' INC 86.0° AZM 1.6° TVD 7035.7'

MD 7496' INC 87.2° AZM 1.8° TVD 7037.5'







65api

93api

57api

L.S. tan, crm and buff wh, sft-m frm, sb ply & blk, dull -semi dull luster, mic xl tex, v calc, w occ fos, v tr ss, sl tr t gn flor, pred lt yel red ring cut, n sin

L.S. tan, crm and buff wh, sft-m frm, sb ply & blk, dull -semi dull luster, mic xl tex, v calc, w occ fos, v tr ss, sl tr t gn flor, pred lt yel red ring cut, n sin

L.S. tan, crm and buff wh, sft-m frm, sb ply & blk, dull -semi dull luster, mic xl tex, v calc, w occ fos, v tr ss, sl tr t gn flor, pred lt yel red ring cut, n sin

MD 7748' INC 90.0° AZM 358.1° TVD 7038.2'

MD 7779' INC 89.4° AZM 357.7° TVD 7038.4'

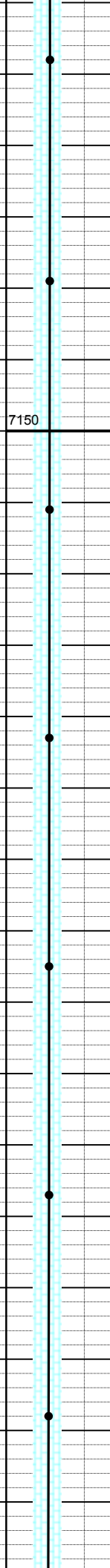
MD 7811' INC 88.7° AZM 358.1° TVD 7038.9'

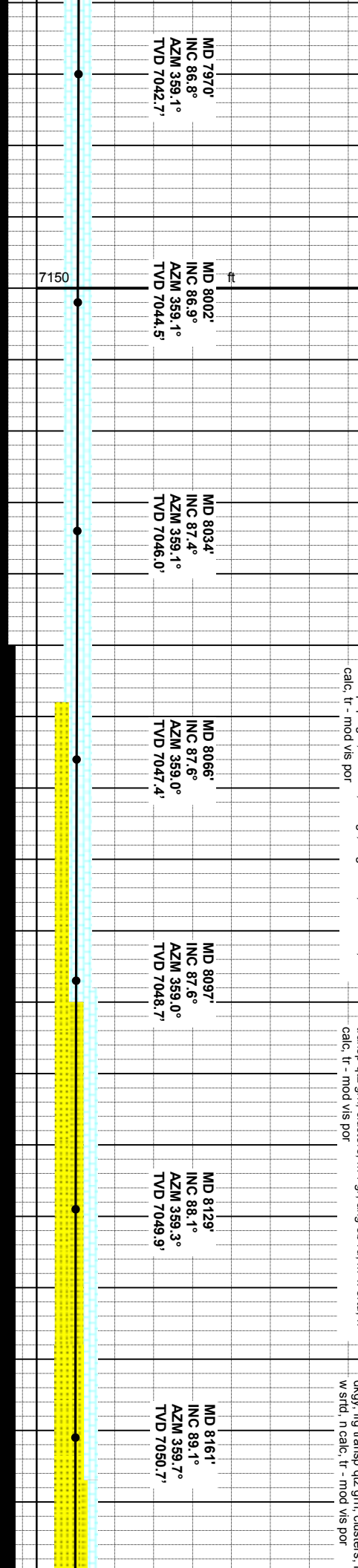
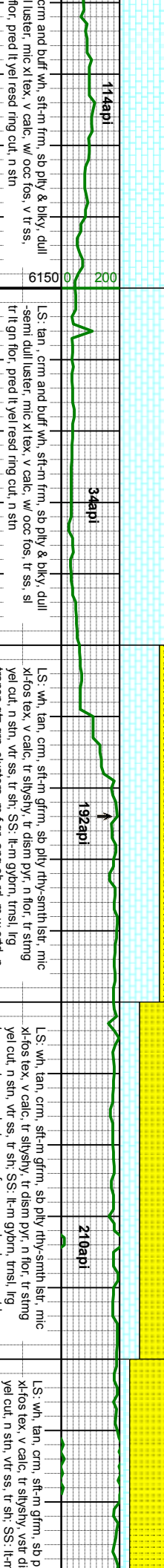
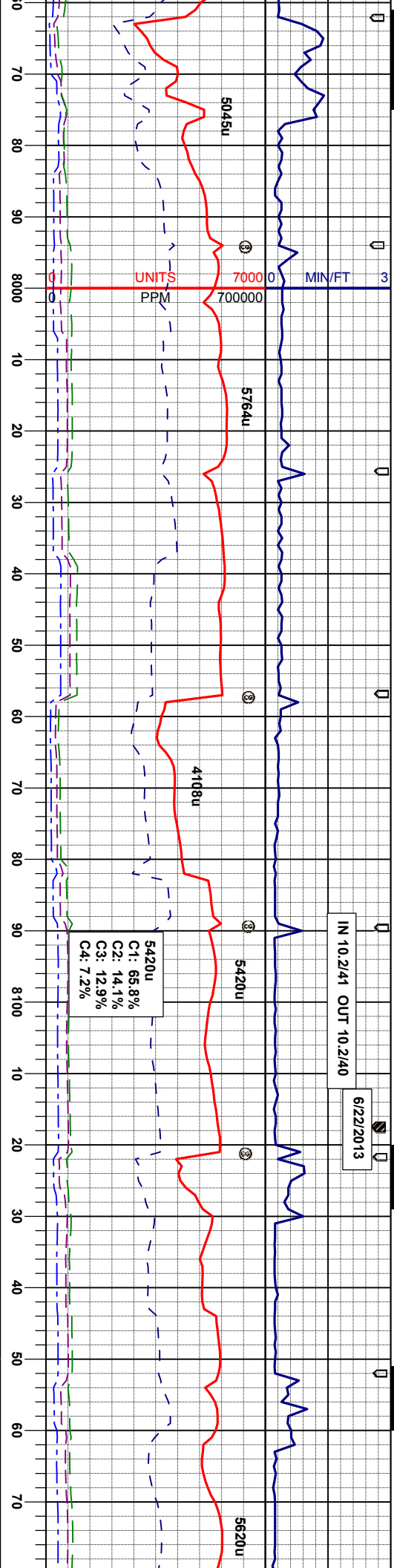
MD 7843' INC 88.7° AZM 358.4° TVD 7039.6'

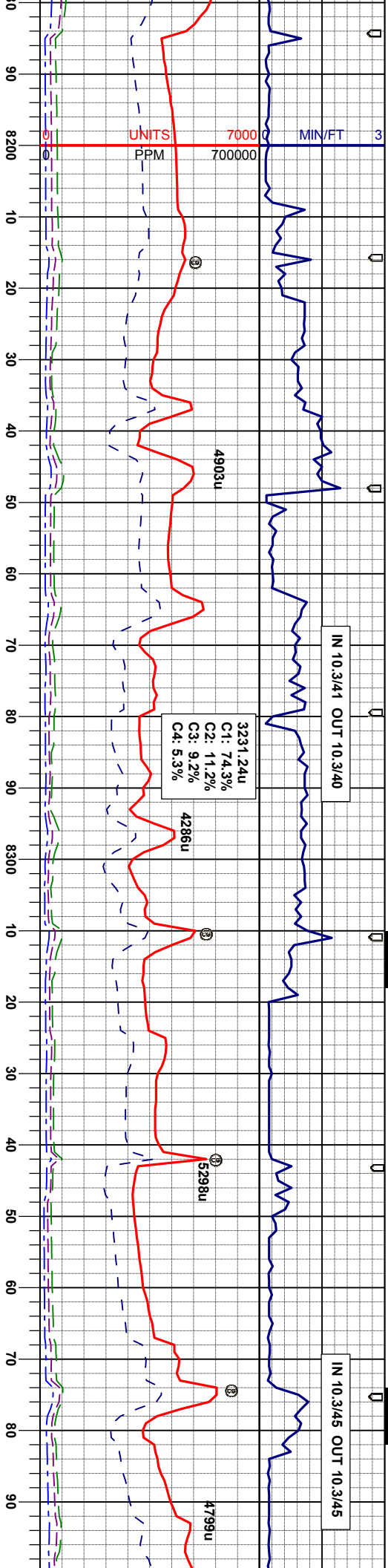
MD 7875' INC 89.2° AZM 358.1° TVD 7040.2'

MD 7907' INC 89.2° AZM 358.1° TVD 7040.7'

MD 7938' INC 88.3° AZM 359.1° TVD 7041.3'







228api
LS: wh, tan, crm, sft-m gfrm, sb pily rthy-smth lsfr, mic
xlfos tex, v calc, tr siltyshy, vstr dsm pyr, n flor, tr sting
yel cut, n sh, vtr ss, tr sh, SS, lk-m gybm, tmsl, sme
dkgy, lig transp qtz grn, clusters, m-f gr, ang-sb rd, m-
w srt, n calc, tr - mod vis por

264api
LS: wh, tan, crm, sft-m gfrm, sb pily rthy-smth lsfr, mic
xlfos tex, v calc, tr siltyshy, vstr dsm pyr, n flor, tr sting
yel cut, n sh, vtr ss, tr sh, SS, lk-m gybm, tmsl, sme
dkgy, lig transp qtz grn, clusters, m-f gr, ang-sb rd, m-
w srt, n calc, tr - mod vis por

255api
LS: wh, tan, crm, sft-m gfrm, sb pily rthy-smth lsfr, mic
xlfos tex, v calc, tr siltyshy, vstr dsm pyr, n flor, tr sting
yel cut, n sh, vtr ss, tr sh, SS, lk-m gybm, tmsl, sme
dkgy, lig transp qtz grn, clusters, m-f gr, ang-sb rd, m-
w srt, n calc, tr - mod vis por

230api
LS: wh, tan, crm, sft-m gfrm, sb pily rthy-smth lsfr, mic
xlfos tex, v calc, tr siltyshy, vstr dsm pyr, n flor, tr sting
yel cut, n sh, vtr ss, tr sh, SS, lk-m gybm, tmsl, sme
dkgy, lig transp qtz grn, clusters, m-f gr, ang-sb rd, m-
w srt, n calc, tr - mod vis por

MD 8193'
INC 89.6°
AZM 359.8°
TVD 7051.1'

MD 8224'
INC 90.0°
AZM 0.2°
TVD 7051.2'

MD 8256'
INC 89.8°
AZM 0.2°
TVD 7051.3'

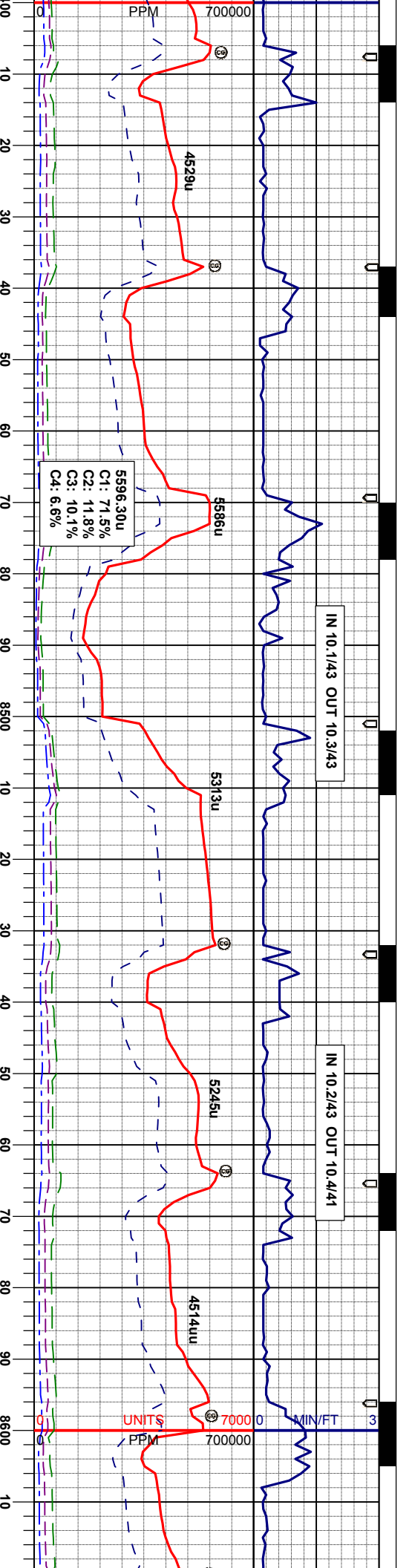
MD 8268'
INC 89.7°
AZM 359.5°
TVD 7051.4'

MD 8320'
INC 91.2°
AZM 359.7°
TVD 7051.1'

MD 8351'
INC 91.7°
AZM 359.8°
TVD 7050.4'

MD 8383'
INC 91.3°
AZM 359.5°
TVD 7049.5'



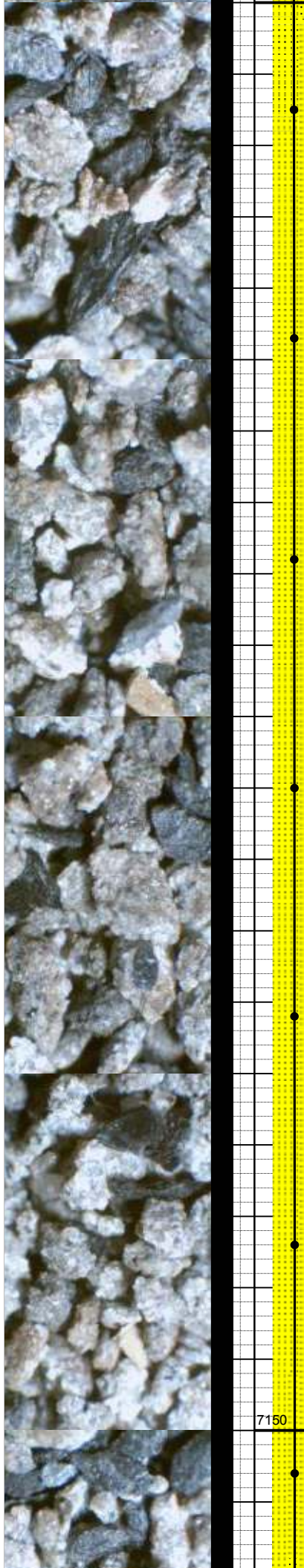


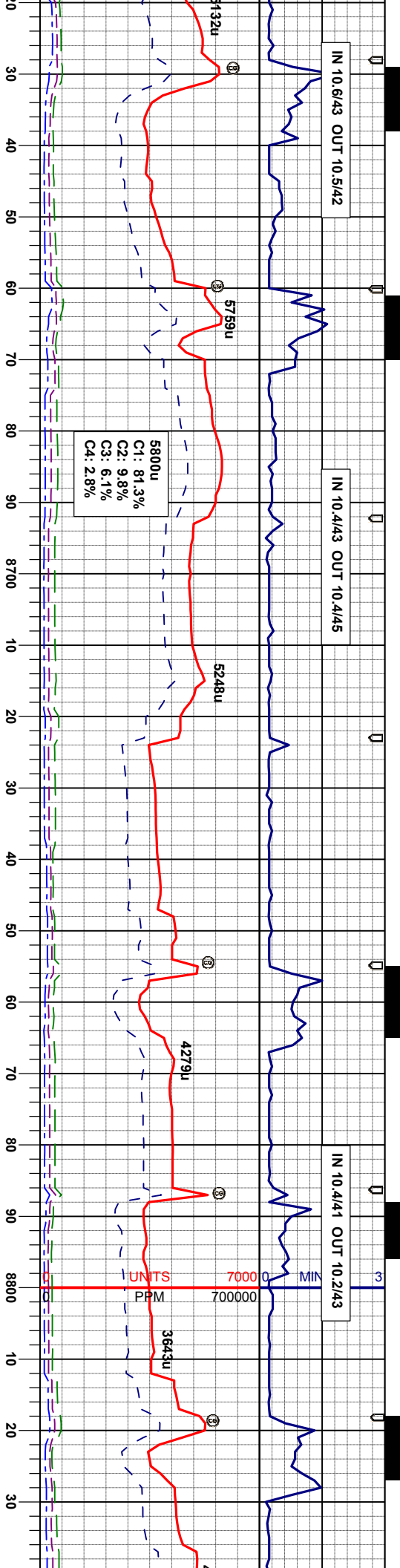
SS: m-dk gy, occ mylon, tr transp qtz grn, clusters, vf
-1 gr, ang-sb rd, p-m strd, tr bio, o sin, n calc, SLTY
SH: m-dkgy sft-fm, sdpily-sbdkly, rthy & aren tex, occ
lam, bioturb in part, tr pyr, sl calc; tr - mod vis por,
string cut, mod brn sh.

SS: m-dk gy, occ mylon, tr transp qtz grn, clusters, vf
-1 gr, ang-sb rd, p-m strd, tr bio, o sin, n calc, SLTY
SH: m-dkgy sft-fm, sdpily-sbdkly, rthy & aren tex, occ
lam, bioturb in part, tr pyr, sl calc; tr - mod vis por,
string cut, mod brn sh.

SS: m-dk gy, occ mylon, lge transp qtz gr, clusters, vf
-1 gr, ang-sb rd, p-m strd, tr bio, o sin, n calc, SLTY
SH: m-dkgy sft-fm, sdpily-sbdkly, rthy & aren tex, occ
lam, tr pyr, sl calc; tr - mod vis por,
sin.

MD 8415'	INC 90.7°	AZM 359.5°	TVD 7048.9'
MD 8447'	INC 90.7°	AZM 359.7°	TVD 7048.6'
MD 8478'	INC 90.5°	AZM 359.3°	TVD 7048.2'
MD 8510'	INC 90.7°	AZM 358.8°	TVD 7047.9'
MD 8542'	INC 90.6°	AZM 358.8°	TVD 7047.5'
MD 8574'	INC 90.6°	AZM 359.0°	TVD 7047.2'
MD 8606'	INC 90.4°	AZM 359.1°	TVD 7046.9'





ANGE

205api

223api

205api

SS: m-dk gy, occ mybn, lge transp qtz gr, clusters, vif
-f gr, ang-sb rd, p-m strd, tr blo, o sin, n calc, SLTY
SH: m-dkgy sft-frm, spbly-sbbkly, rthy & aren tex, occ
lam, tr pyr, sl calc, tr - mod vis por, sting cut, mod brn
sin.

SS: m-dk gy, occ mybn, lge transp qtz gr, clusters, vif
-f gr, ang-sb rd, p-m strd, shy ip, o sin, n calc, SLTY
SH: m-dkgy sft-frm, spbly-sbbkly, rthy & aren tex, occ
lam, tr pyr, sl calc, tr - mod vis por, sting cut, mod brn
sin.

SS: m-dk gy, occ mybn, lge transp qtz gr, clusters, vif
-f gr, ang-sb rd, p-m strd, shy ip, o sin, n calc, SLTY
SH: m-dkgy sft-frm, spbly-sbbkly, rthy & aren tex, occ
lam, tr pyr, sl calc, tr - mod vis por, sting cut, mod brn
sin.

SS: m-dk gy, occ mybn, lge transp qtz gr, clusters, vif
-f gr, ang-sb rd, p-m strd, shy ip, o sin, n calc, SLTY
SH: m-dkgy sft-frm, spbly-sbbkly, rthy & aren tex, occ
lam, tr pyr, sl calc, tr - mod vis por, sting cut, mod brn
sin.

MD 8638'
INC 89.4°
AZM 358.8°
TVD 7046.9'

MD 8669'
INC 88.5°
AZM 359.0°
TVD 7047.6'

MD 8701'
INC 88.0°
AZM 357.7°
TVD 7048.5'

MD 8732'
INC 88.5°
AZM 357.6°
TVD 7049.5'

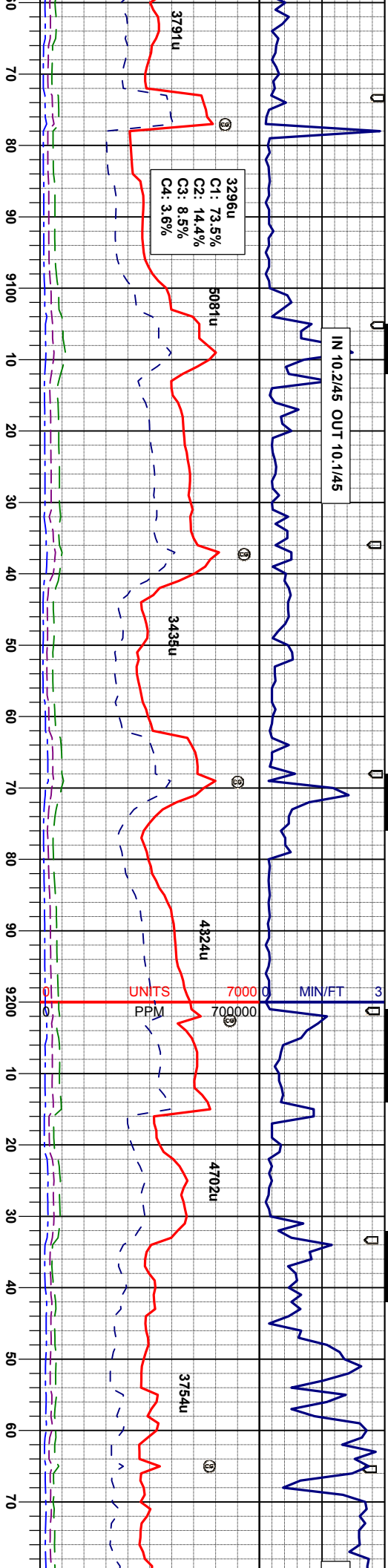
MD 8764'
INC 89.2°
AZM 357.9°
TVD 7050.1'

MD 8796'
INC 89.9°
AZM 358.8°
TVD 7050.4'

MD 8827'
INC 90.6°
AZM 359.5°
TVD 7050.2'

7150





181api
210api
210api
275api

SS: m-dk gy, occ mybmn, mod lge transp qtz gr, clusters, v-f gr, ang-sb rd, p-m strd, o sn, n calc; SLTY SH: m-dkgy sft-frm, sbply-sbply, rthy & aren tex, occ lam, tr pyr, sl calc; tr - mod vis por, sting cut, mod bn sn.

SS: m-dk gy, occ mybmn, mod lge transp qtz gr, clusters, v-f gr, ang-sb rd, p-m strd, o sn, n calc; str slysh; tr - mod vis por, sting cut, mod bn sn.

SS: m-dk gy, occ mybmn, mod lge transp qtz gr, clusters, v-f gr, ang-sb rd, p-m strd, o sn, n calc; SLTY SH: m-dkgy sft-frm, sbply-sbply, rthy & aren tex, occ lam, tr pyr, sl calc; tr - mod vis por, sting cut, mod bn sn.

MD 9082'
INC 89.9°
AZM 1.1°
TVD 7046.8'

MD 9114'
INC 90.8°
AZM 0.2°
TVD 7046.6'

MD 9146'
INC 90.8°
AZM 0.5°
TVD 7046.1'

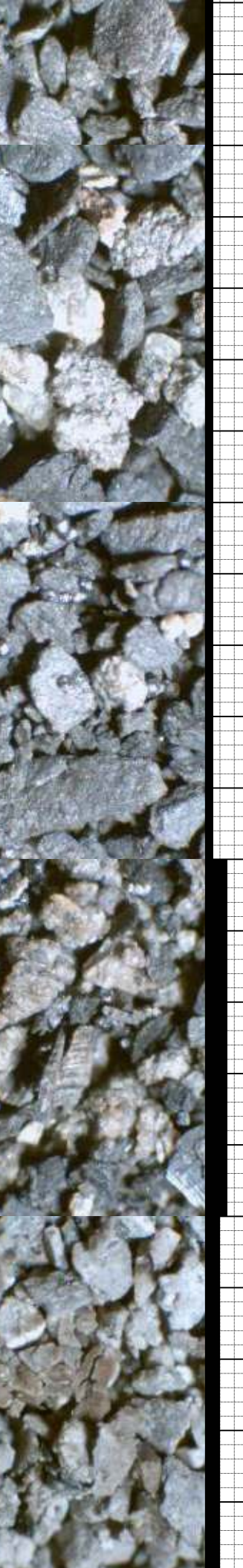
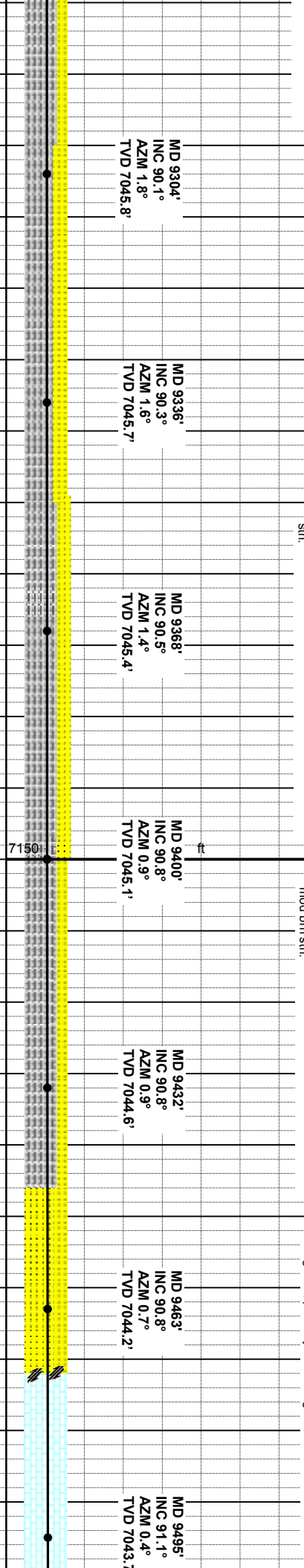
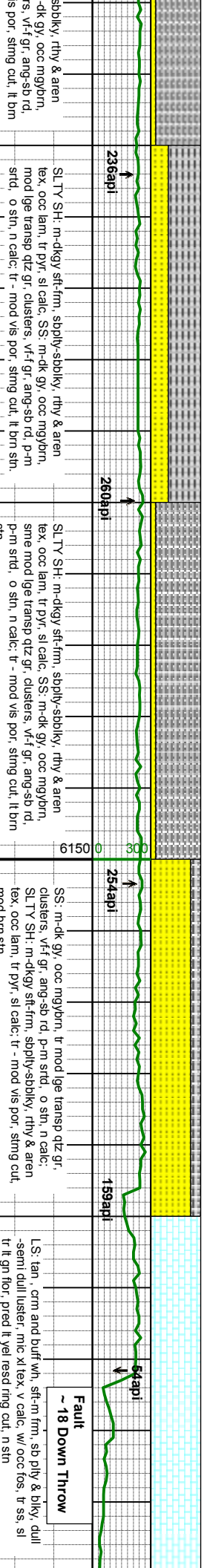
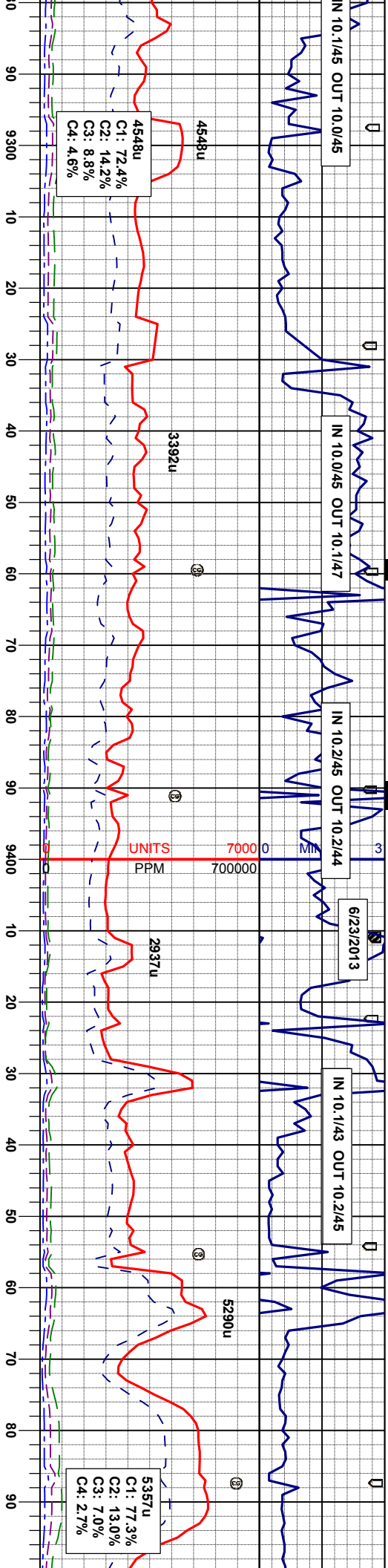
MD 9178'
INC 90.7°
AZM 0.9°
TVD 7045.7'

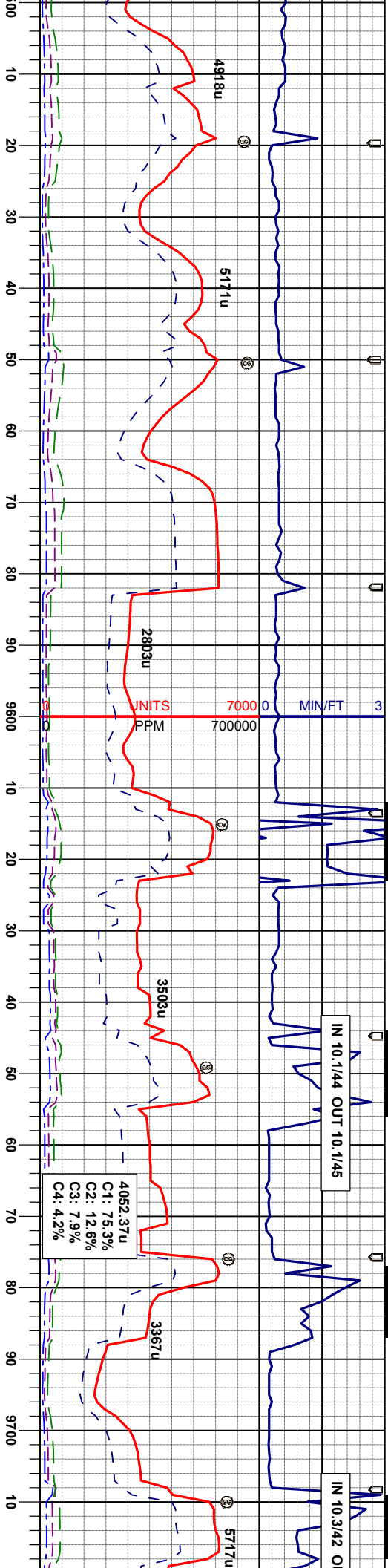
MD 9209'
INC 90.2°
AZM 1.2°
TVD 7045.4'

MD 9241'
INC 89.4°
AZM 1.4°
TVD 7045.6'

MD 9273'
INC 89.9°
AZM 1.6°
TVD 7045.8'





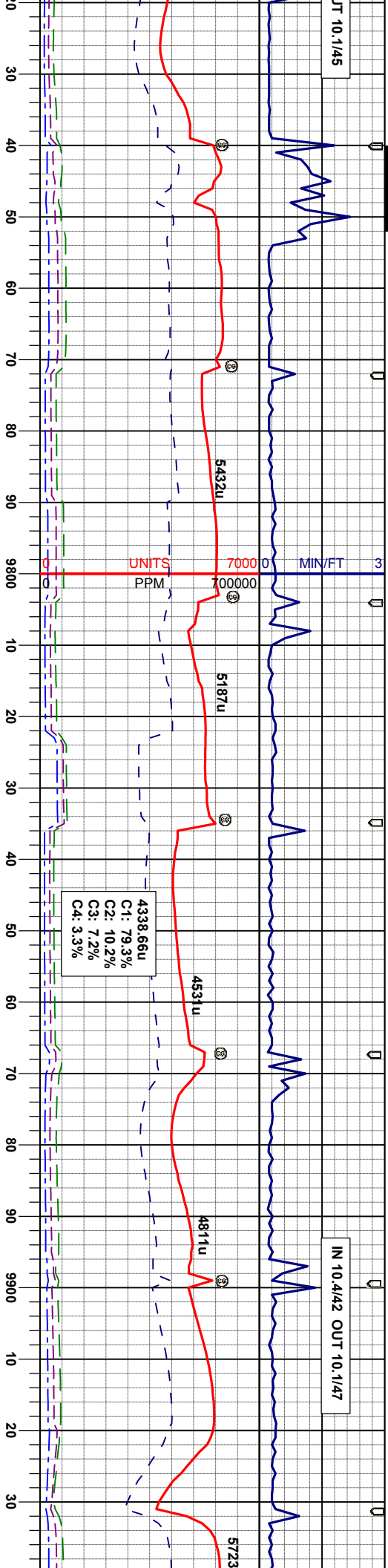


153api	98api	47api	196api
LS: tan, crm and buff wh, sft-m frm, sb ply & bly, dull -semi dull luster, mic xl tex, v calc, w occ tos, tr ss, sl tr lt gn flr, pred lt yel resd ring cut, n stn	LS: tan, crm and buff wh, sft-m frm, sb ply & bly, dull -semi dull luster, mic xl tex, v calc, w occ tos, tr ss, sl tr lt gn flr, pred lt yel resd ring cut, n stn	LS: tan, crm and buff wh, sft-m frm, sb ply & bly, dull -semi dull luster, mic xl tex, v calc, w occ tos, tr ss, sl tr lt gn flr, pred lt yel resd ring cut, n stn	LS: wh, tan, crm, sft-m grfm, sb ply rthy-smth lstf, mic xl-fos tex, v calc, tr silvshy, vstr dism pyr, n flr, tr sting yel cut, n stn, vtr ss, tr sh, SS, lt-m gybm, tmsl, sme dkgy, lig transp qtz grn, clusters, m-h gr, ang-so rd, m- w srd, n calc, tr - mod vis por
MD 9527' INC 91.2° AZM 0.2° TVD 7043.0'	MD 9559' INC 91.6° AZM 0.2° TVD 7042.2'	MD 9622' INC 92.2° AZM 0.5° TVD 7039.9'	MD 9654' INC 91.5° AZM 0.5° TVD 7038.9'
MD 9686' INC 91.1° AZM 0.5° TVD 7038.2'	MD 9717' INC 90.4° AZM 0.0° TVD 703		



UT 10.1/45

IN 10.4/42 OUT 10.1/47



grfm, sb ply rthy-smth lsit, mic
clusters, v-f gr, ang-sb rd, p-m strd, o sin, n calc
SLTY SH: m-dkgy sft-frn, sbply-sbdky, rthy &
aren tex, occ lam, tr pyr, si calc, tr - mod vis por, sting
cut, mod brn sin.

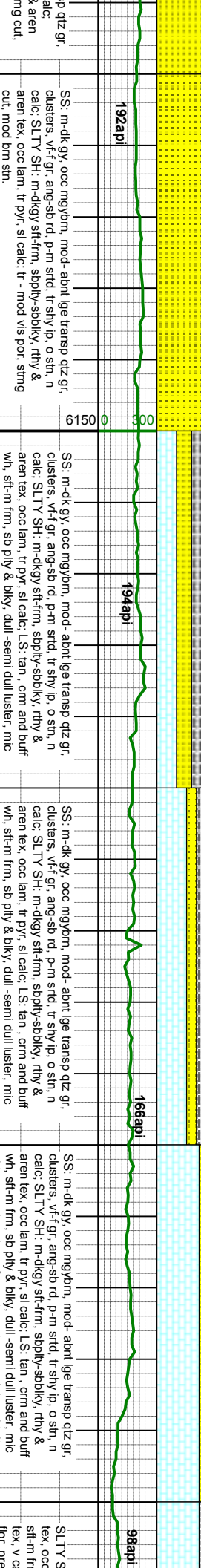
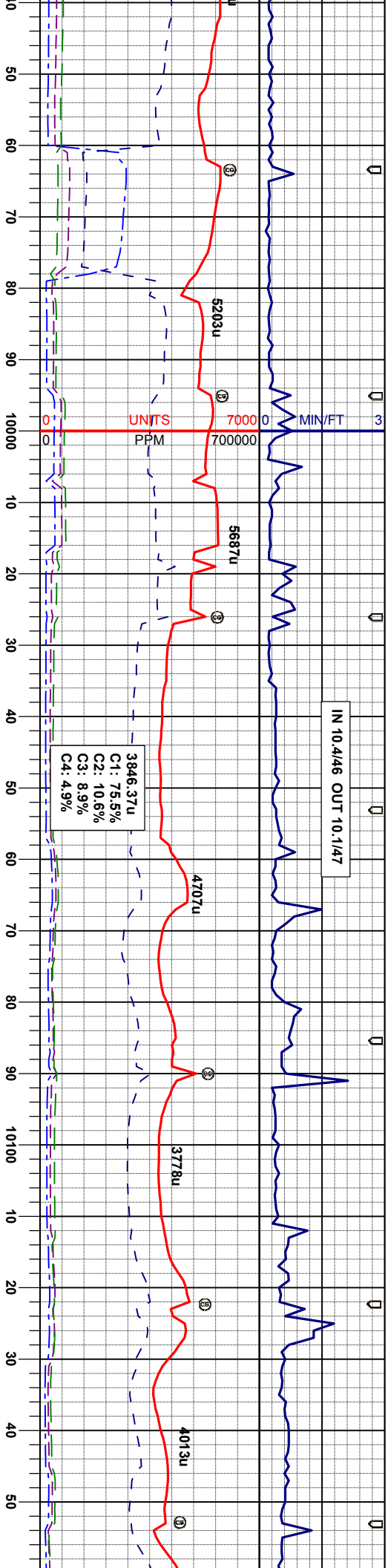
SS: m-dk gy, occ mybrn, mod- abnt lge transp qtz gr,
clusters, v-f gr, ang-sb rd, p-m strd, o sin, n calc
SLTY SH: m-dkgy sft-frn, sbply-sbdky, rthy & aren
tex, occ lam, tr pyr, si calc, tr - mod vis por, sting cut,
mod brn sin.

SS: m-dk gy, occ mybrn, mod- abnt lge transp qtz gr,
clusters, v-f gr, ang-sb rd, p-m strd, o sin, n calc
SLTY SH: m-dkgy sft-frn, sbply-sbdky, rthy & aren
tex, occ lam, tr pyr, si calc, tr - mod vis por, sting cut,
mod brn sin.

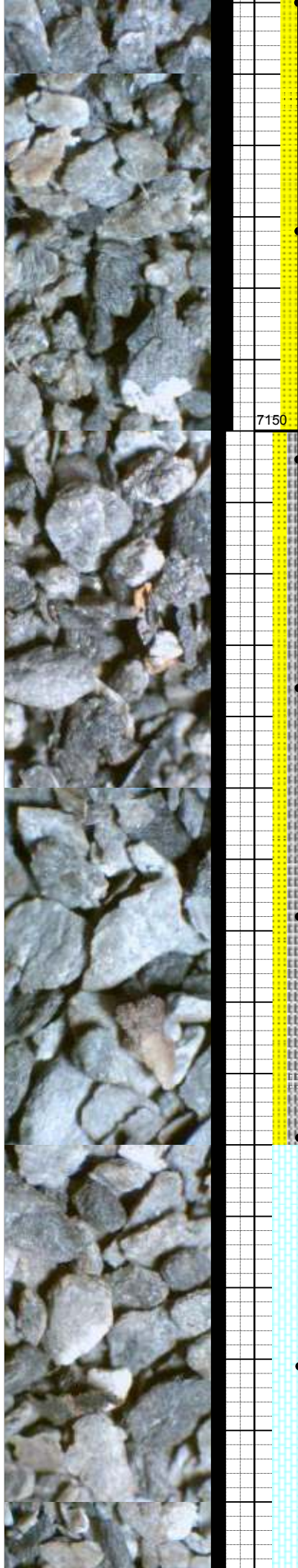
SS: m-dk gy, occ mybrn, mod- abnt lge transp qtz gr,
clusters, v-f gr, ang-sb rd, p-m strd, o sin, n calc
SLTY SH: m-dkgy sft-frn, sbply-sbdky, rthy &
aren tex, occ lam, tr pyr, si calc, tr - mod vis por, sting
cut, mod brn sin.

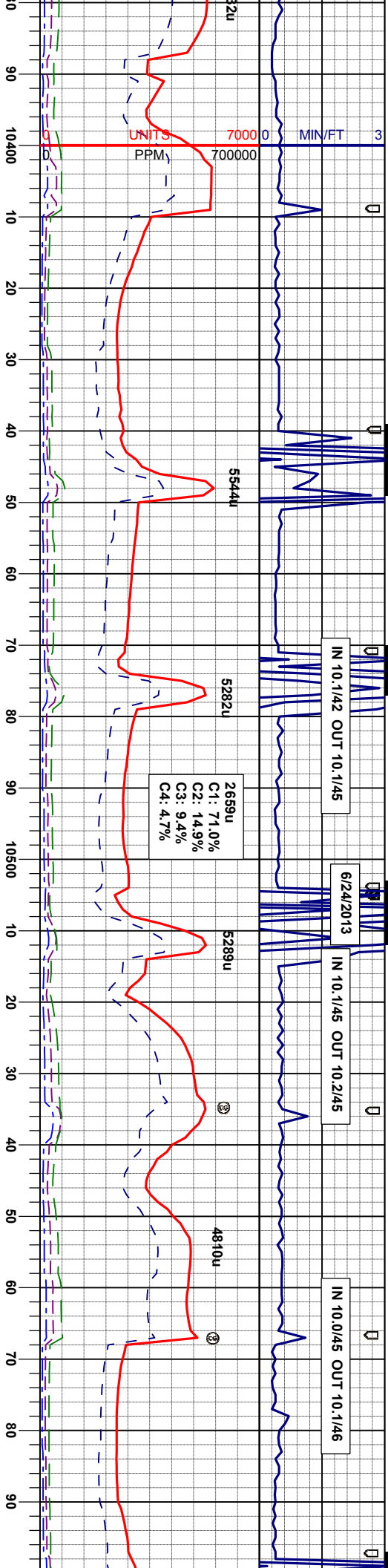
MD 9750' INC 89.9° AZM 1.4° TVD 7037.7'	MD 9781' INC 89.8° AZM 0.4° TVD 7037.8'	MD 9813' INC 89.9° AZM 0.7° TVD 7037.9'	MD 9845' INC 90.1° AZM 0.9° TVD 7037.9'	MD 9877' INC 90.3° AZM 0.7° TVD 7037.8'	MD 9909' INC 90.4° AZM 0.4° TVD 7037.6'	MD 9931' INC 90.4° AZM 0.4° TVD 7037.6'
--------------------------------------------------	--------------------------------------------------	--------------------------------------------------	--------------------------------------------------	--------------------------------------------------	--------------------------------------------------	--------------------------------------------------



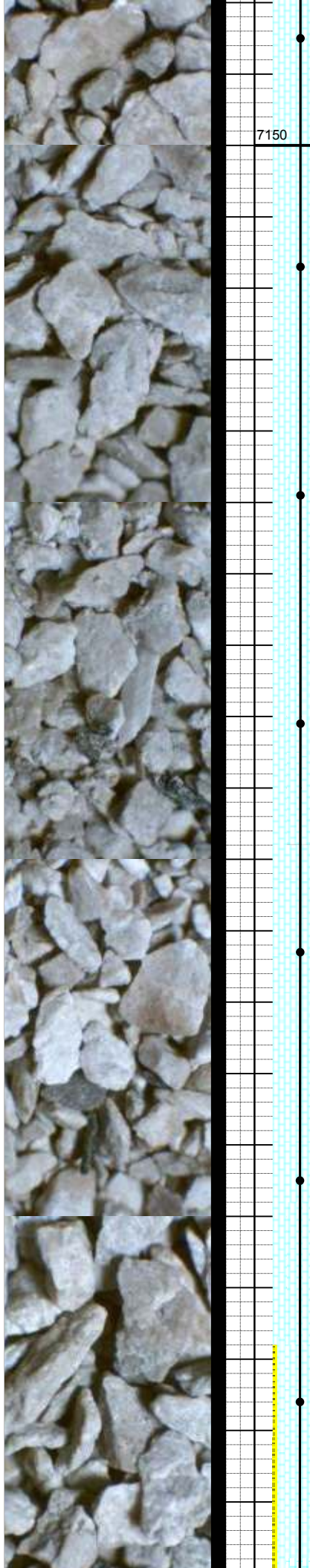


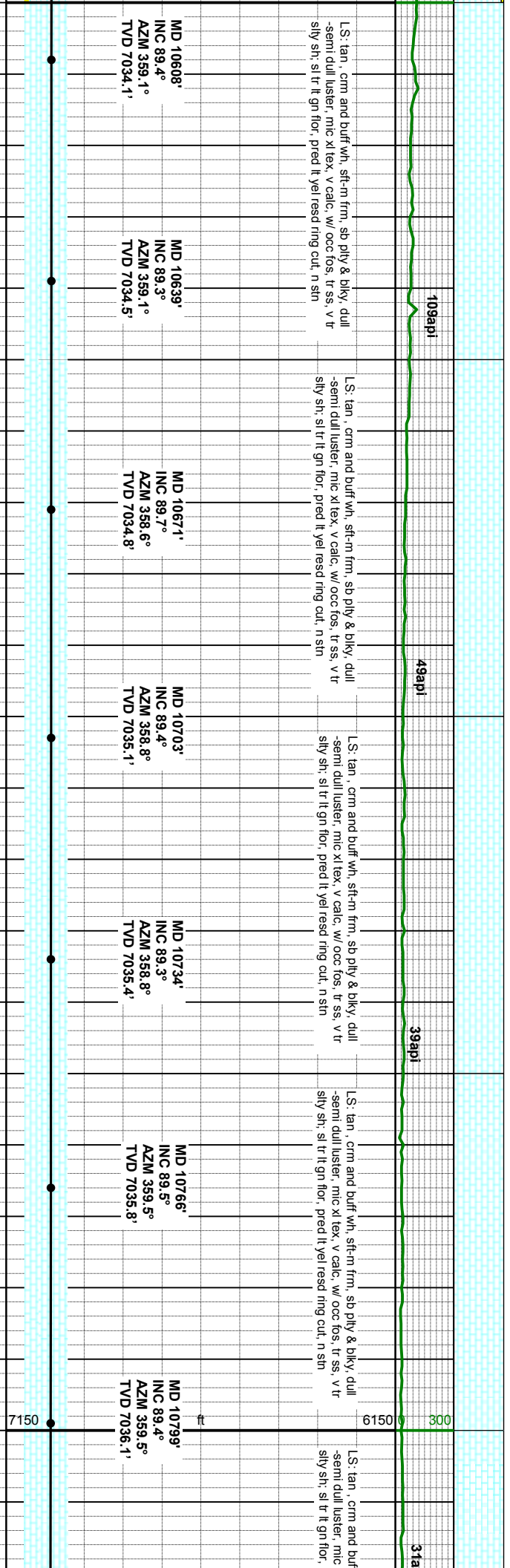
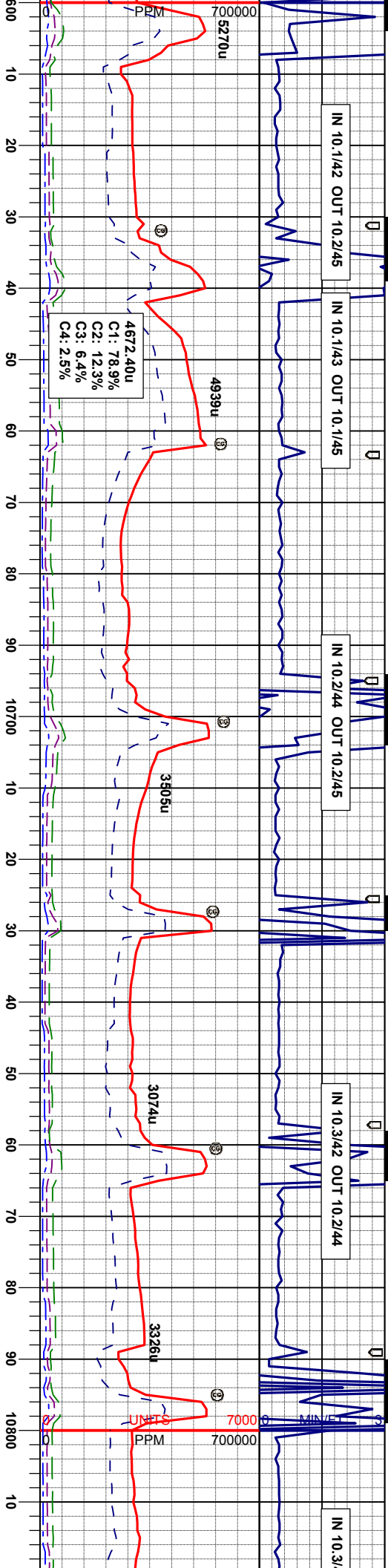
MD 9972'	INC 90.8°	AZM 0.5°	TVD 7037.0'
MD 10004'	INC 90.8°	AZM 0.4°	TVD 7036.6'
MD 10036'	INC 91.1°	AZM 0.2°	TVD 7036.1'
MD 10068'	INC 91.2°	AZM 0.4°	TVD 7035.4'
MD 10099'	INC 91.1°	AZM 0.2°	TVD 7034.8'
MD 10131'	INC 90.9°	AZM 0.0°	TVD 7034.2'
MD	INC	AZM	TVD





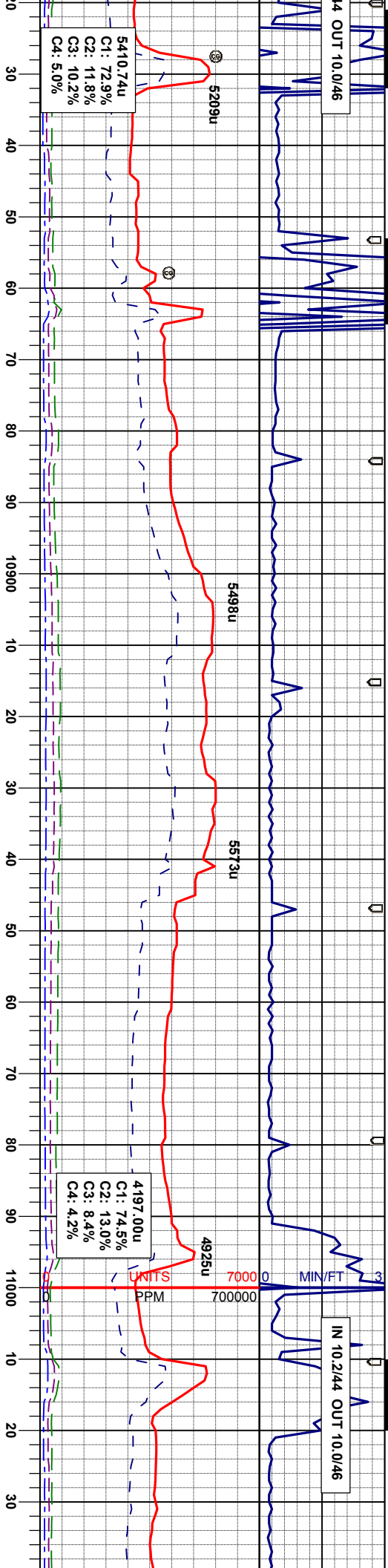
109api	52api	91api	109api
MD 10385' INC 89.9° AZM 0.4° TVD 7032.7'	MD 10449' INC 90.3° AZM 0.2° TVD 7032.4'	MD 10481' INC 89.5° AZM 359.5° TVD 7032.4'	MD 10513' INC 88.9° AZM 0.0° TVD 7032.9'
MD 10417' INC 90.5° AZM 359.8° TVD 7032.6'	MD 10449' INC 90.3° AZM 0.2° TVD 7032.4'	MD 10481' INC 89.5° AZM 359.5° TVD 7032.4'	MD 10513' INC 88.9° AZM 0.0° TVD 7032.9'
MD 10545' INC 89.1° AZM 359.8° TVD 7033.5'	MD 10576' INC 89.4° AZM 0.0° TVD 7033.9'		





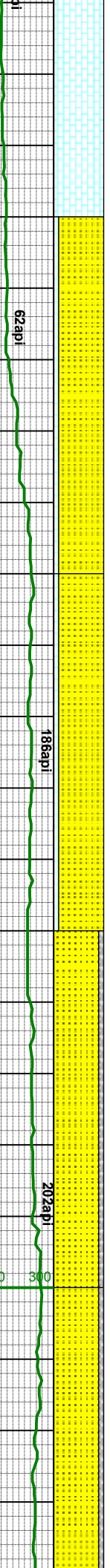
14 OUT 10.0/46

IN 10.2/44 OUT 10.0/46



5410.74u
C1: 72.9%
C2: 11.8%
C3: 10.2%
C4: 5.0%

4197.00u
C1: 74.5%
C2: 13.0%
C3: 8.4%
C4: 4.2%



62api

186api

202api

wh, sft-m frm, sb ply & bky, dull
xl tex, v calc, w occ fos, tr ss, v tr
covered it yel read ring cut, n sin

LS: wh, tan, crm, sft-m grm, sb ply rthy-smth lsfr, mic
xl-fos tex, v calc, tr silshty, vstr dsm pyr, n flcr, tr sting
yel cut, n sin, vtr ss, tr sn, SS: lt-m gybm, trnsi, sme
dkgy, lig transp qtz grn, clusters, m-f gr, ang-sb rd, m-
w srtf, n calc, tr - mod vis por

LS: wh, tan, crm, sft-m grm, sb ply rthy-smth lsfr, mic
xl-fos tex, v calc, tr silshty, vstr dsm pyr, n flcr, tr sting
yel cut, n sin, vtr ss, tr sht, SS: lt-m gybm, trnsi, sme
dkgy, lig transp qtz grn, clusters, m-f gr, ang-sb rd, m-
w srtf, n calc, tr - mod vis por

SS: m-dk gy, occ mgybm, mod- abnt lge transp qtz gr,
clusters, v-f gr, ang-sb rd, p-m srtf, o sin, n calc.
SLTY SH: m-dkgy sft-frm, sbply-sbiky, rthy & aren
tex, occ lam, tr pyr, sl calc, tr - mod vis por, sting cut,
mod brn sin.

SS: m-dk gy, occ mgybm, mod- abnt lge transp
clusters, v-f gr, ang-sb rd, p-m srtf, o sin, n calc.
SLTY SH: m-dkgy sft-frm, sbply-sbiky, rthy &
tex, occ lam, tr pyr, sl calc, tr - mod vis por, str
mod brn sin.

MD 10830'
INC 88.9°
AZM 359.8°
TVD 7036.5'

MD 10861'
INC 88.2°
AZM 0.5°
TVD 7037.3'

MD 10893'
INC 87.7°
AZM 0.2°
TVD 7038.5'

MD 10925'
INC 87.8°
AZM 359.7°
TVD 7039.7'

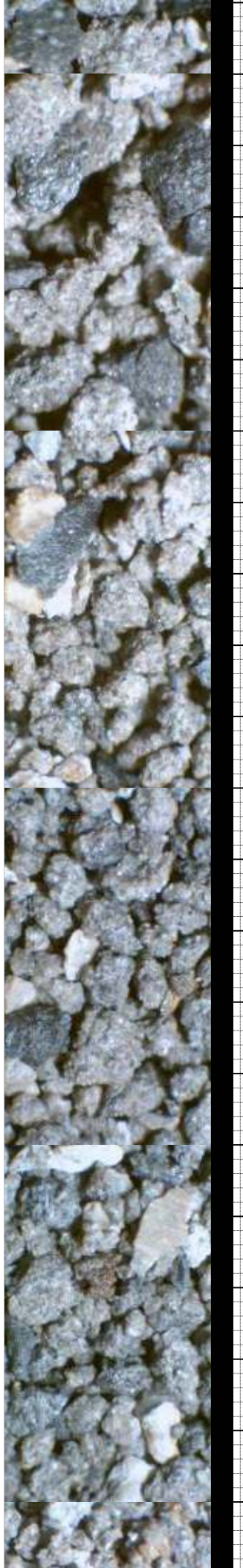
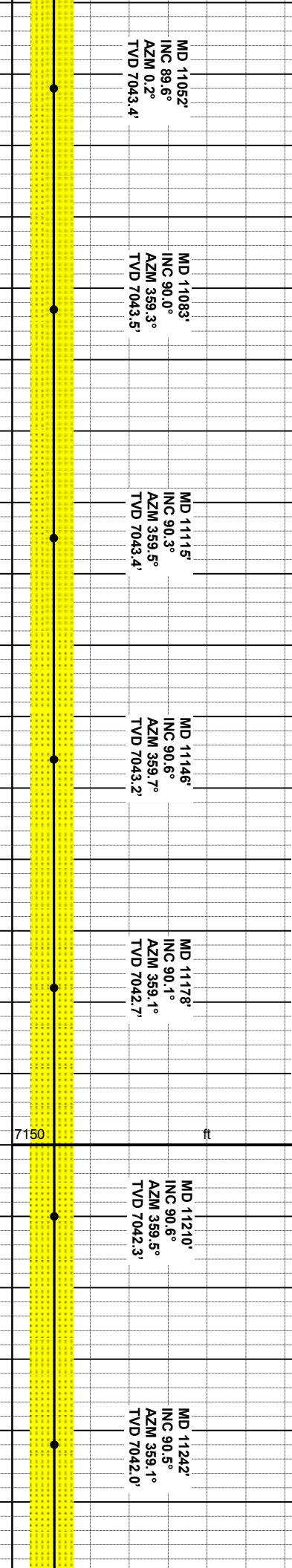
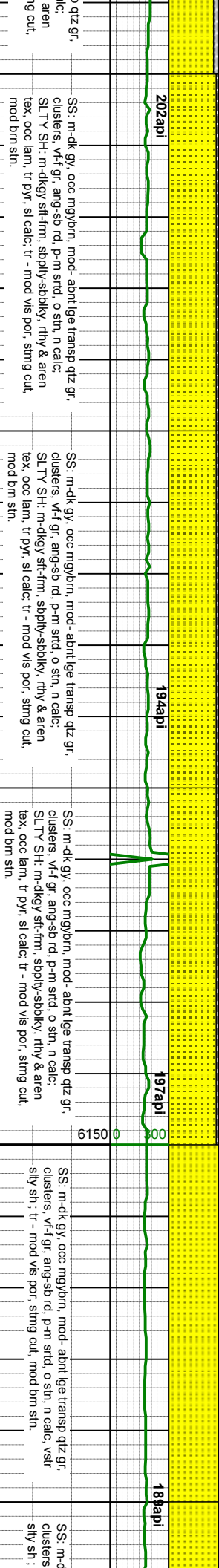
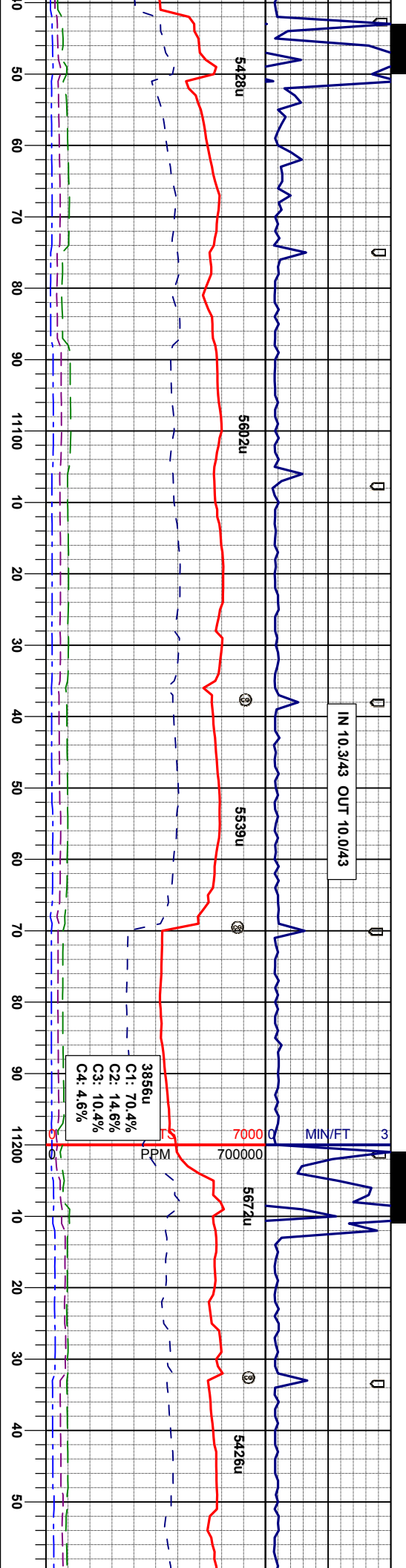
MD 10956'
INC 87.9°
AZM 359.7°
TVD 7040.9'

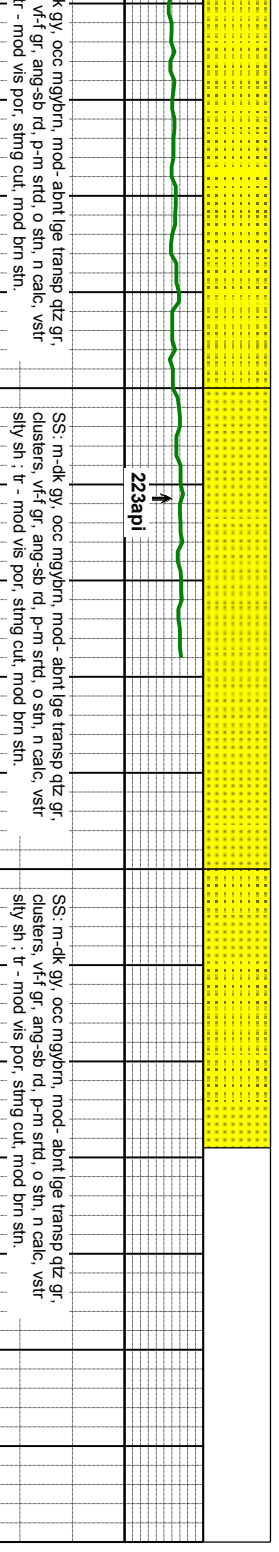
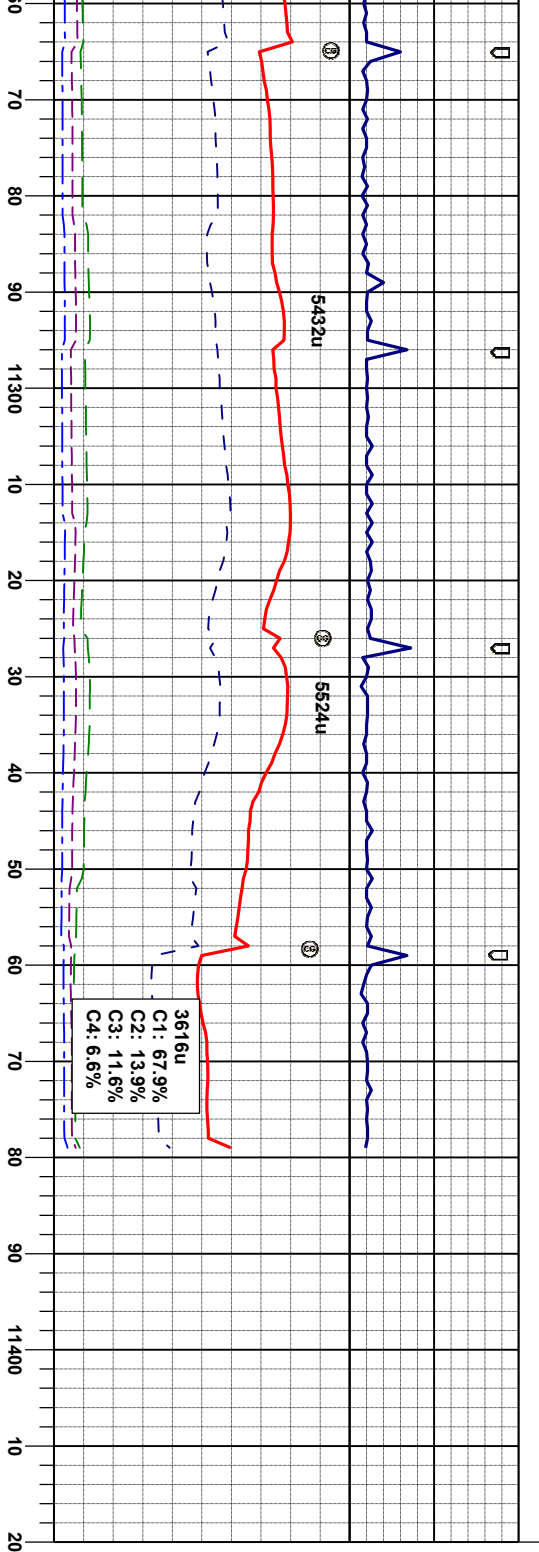
MD 10988'
INC 88.0°
AZM 359.5°
TVD 7042.0'

MD 11020'
INC 88.8°
AZM 359.7°
TVD 7042.9'

7150 ft







MD 11273'
INC 90.9°
AZM 359.5°
TVD 7041.6'

MD 11325'
INC 91.3°
AZM 358.8°
TVD 7040.6'

MD 11379'
INC 91.3°
AZM 358.8°
TVD 7039.4'

TD 11,379'
@ 7:27pm 6/24/2013

Thank you for using
Columbine Logging Inc.

