

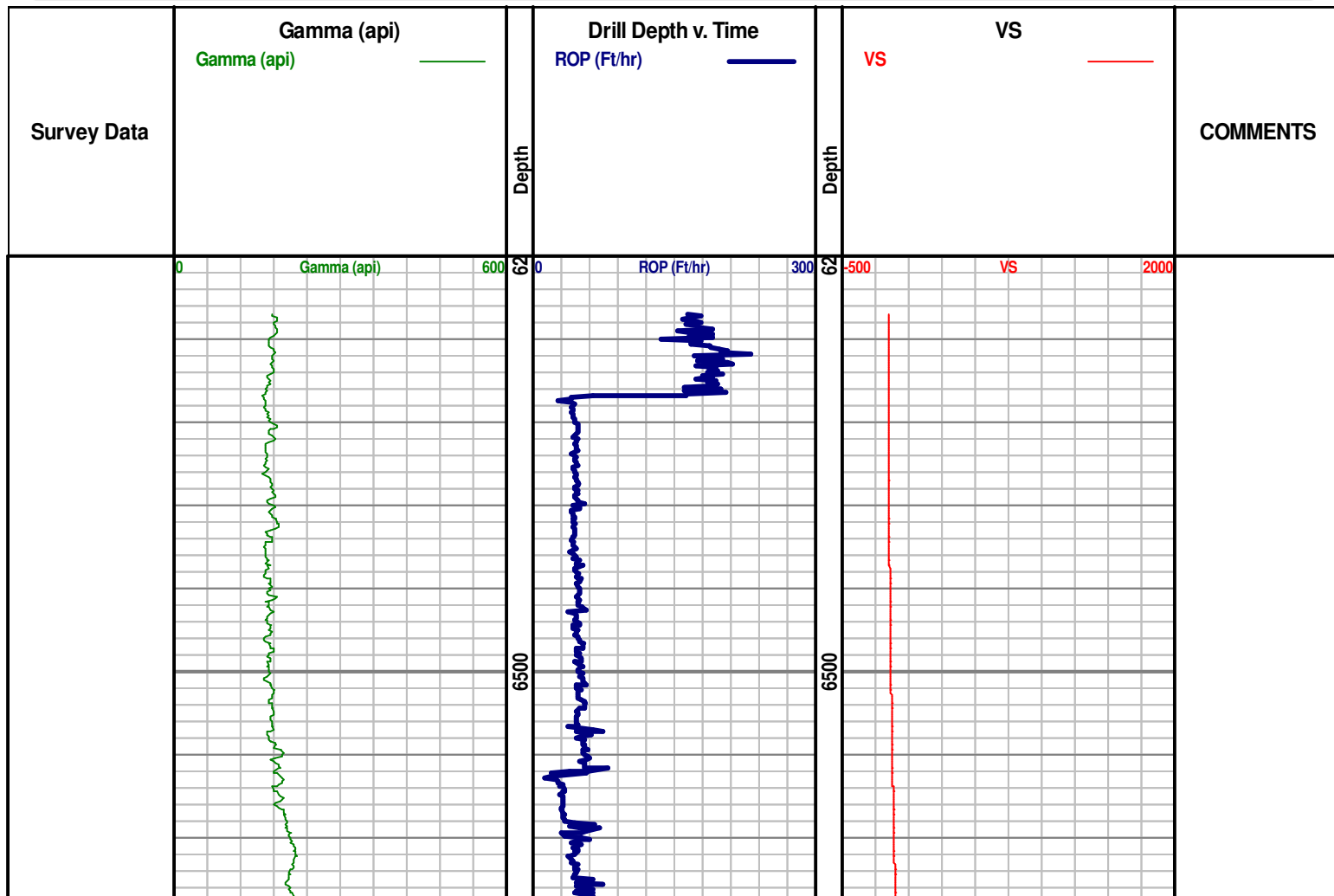


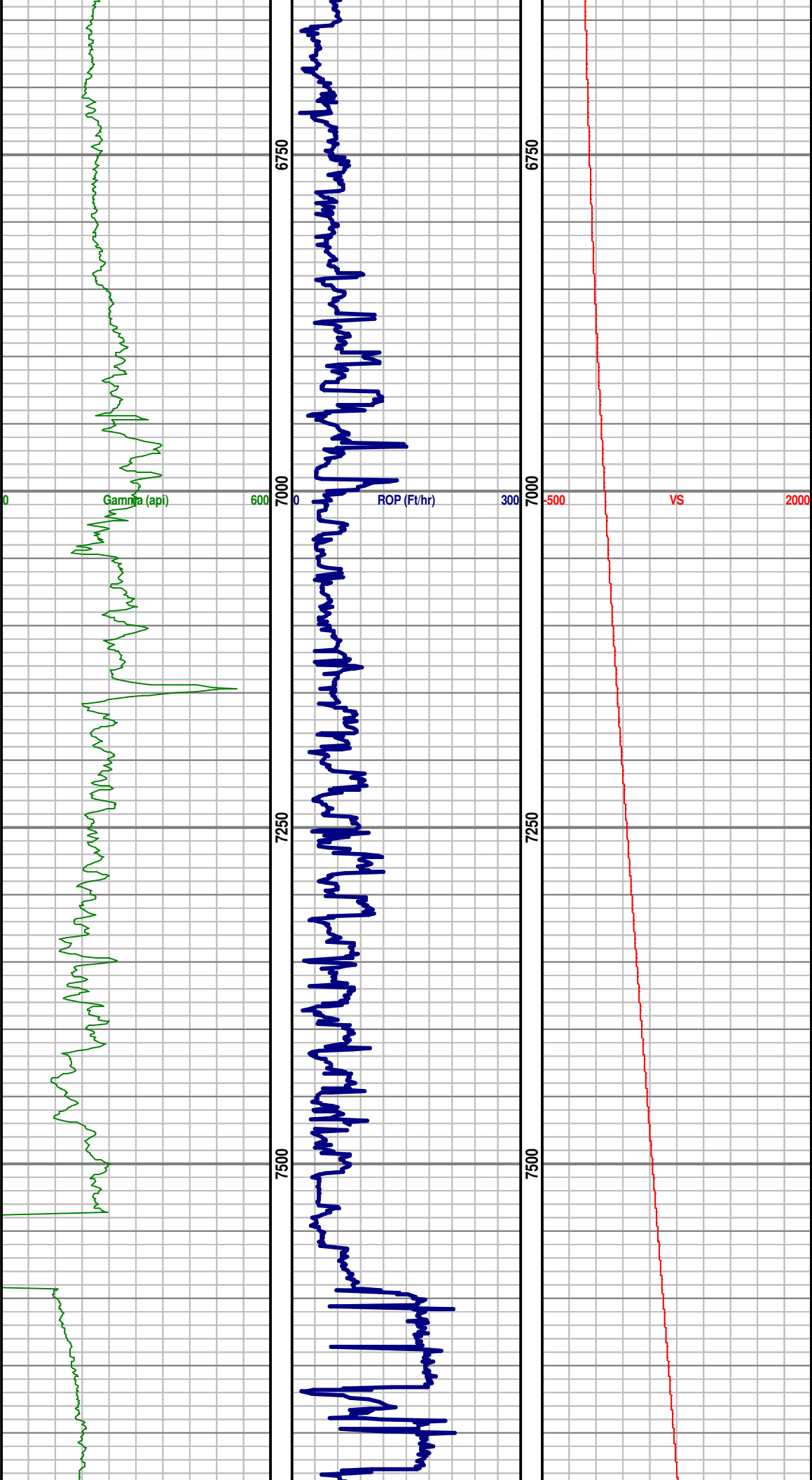
**Denver Remote Management Center**  
**13949 West Colfax Ave, Suite 205**  
**Lakewood, Colorado 80401**

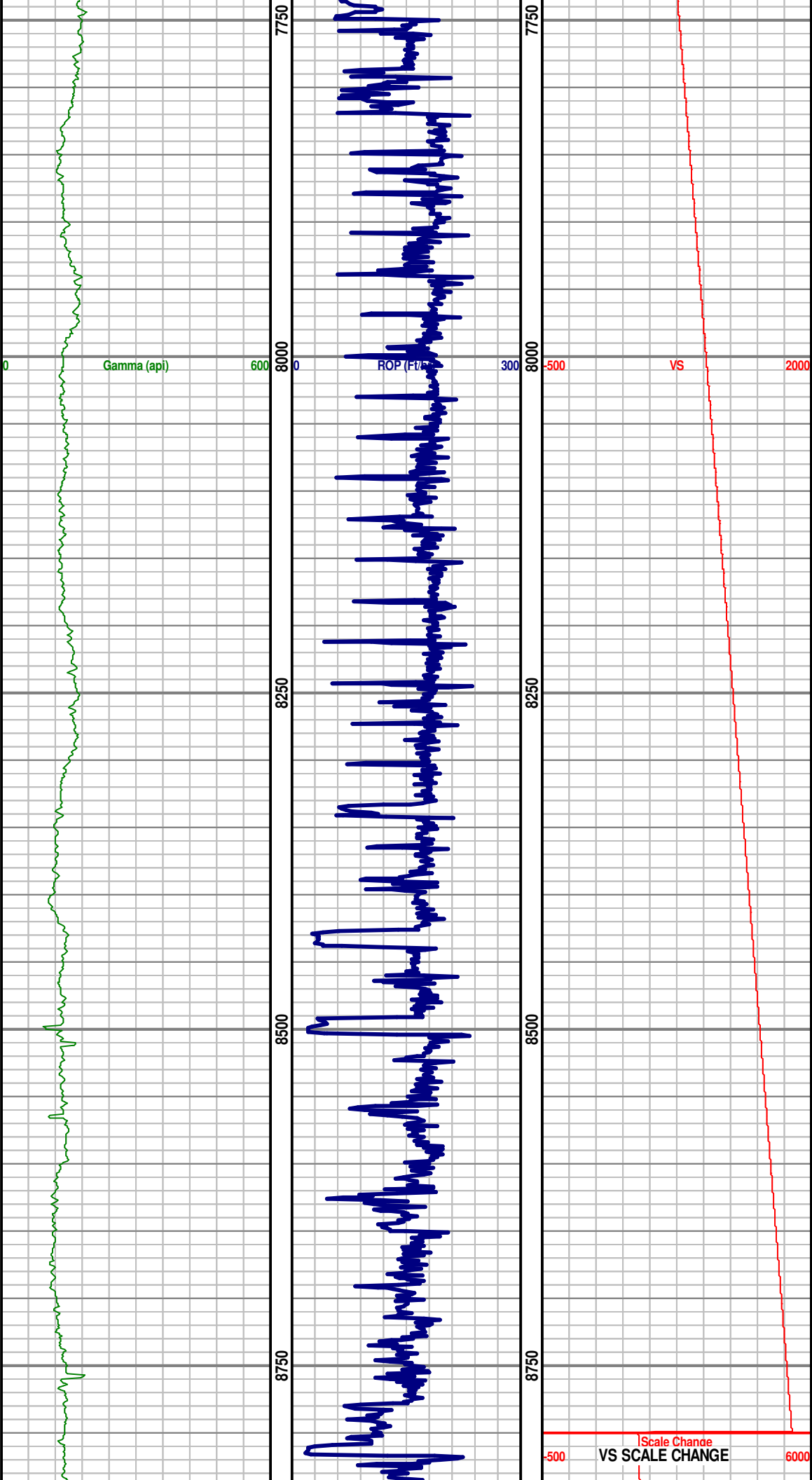
Phone 303.325.3289

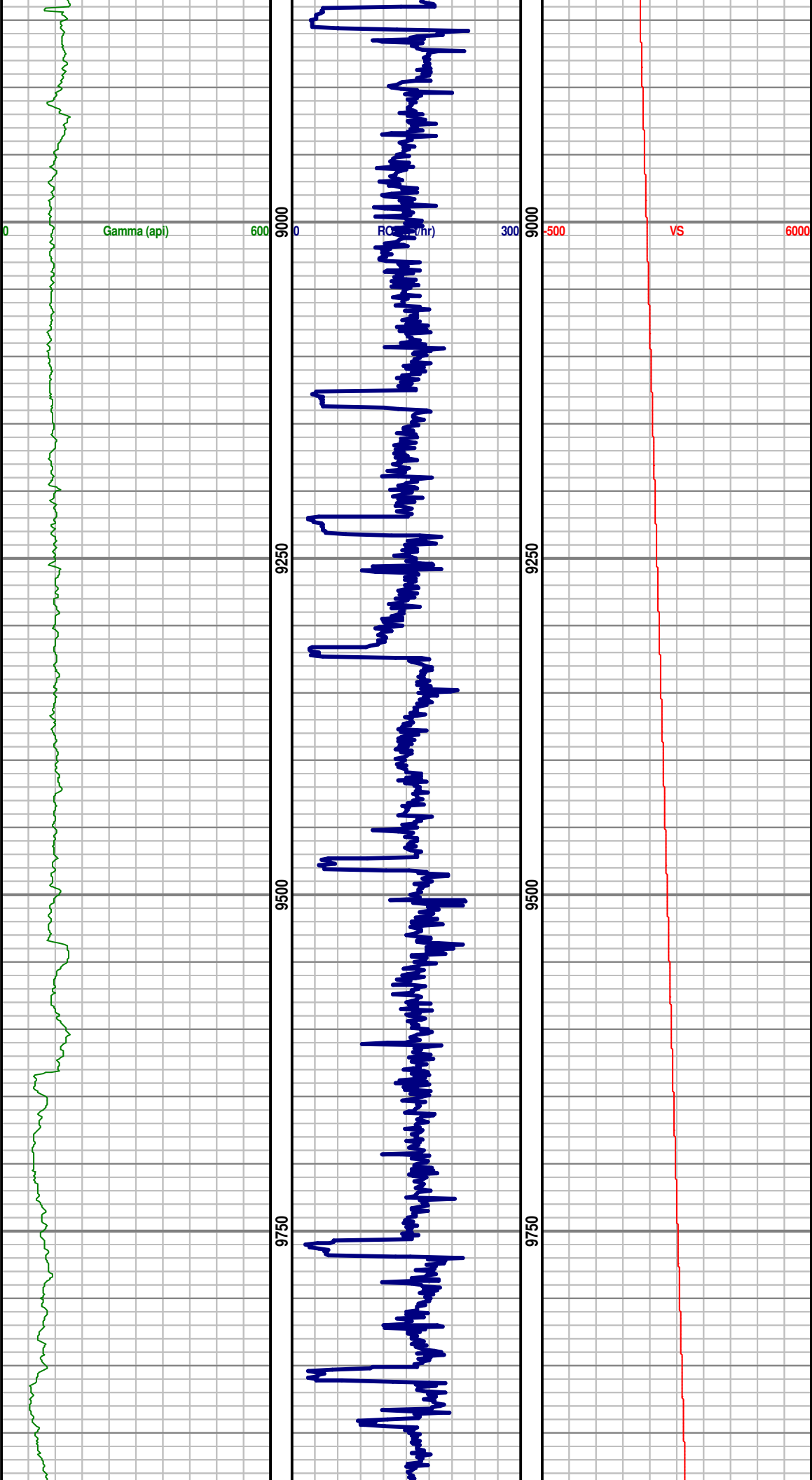
[WWW.HZMUD.COM](http://WWW.HZMUD.COM)

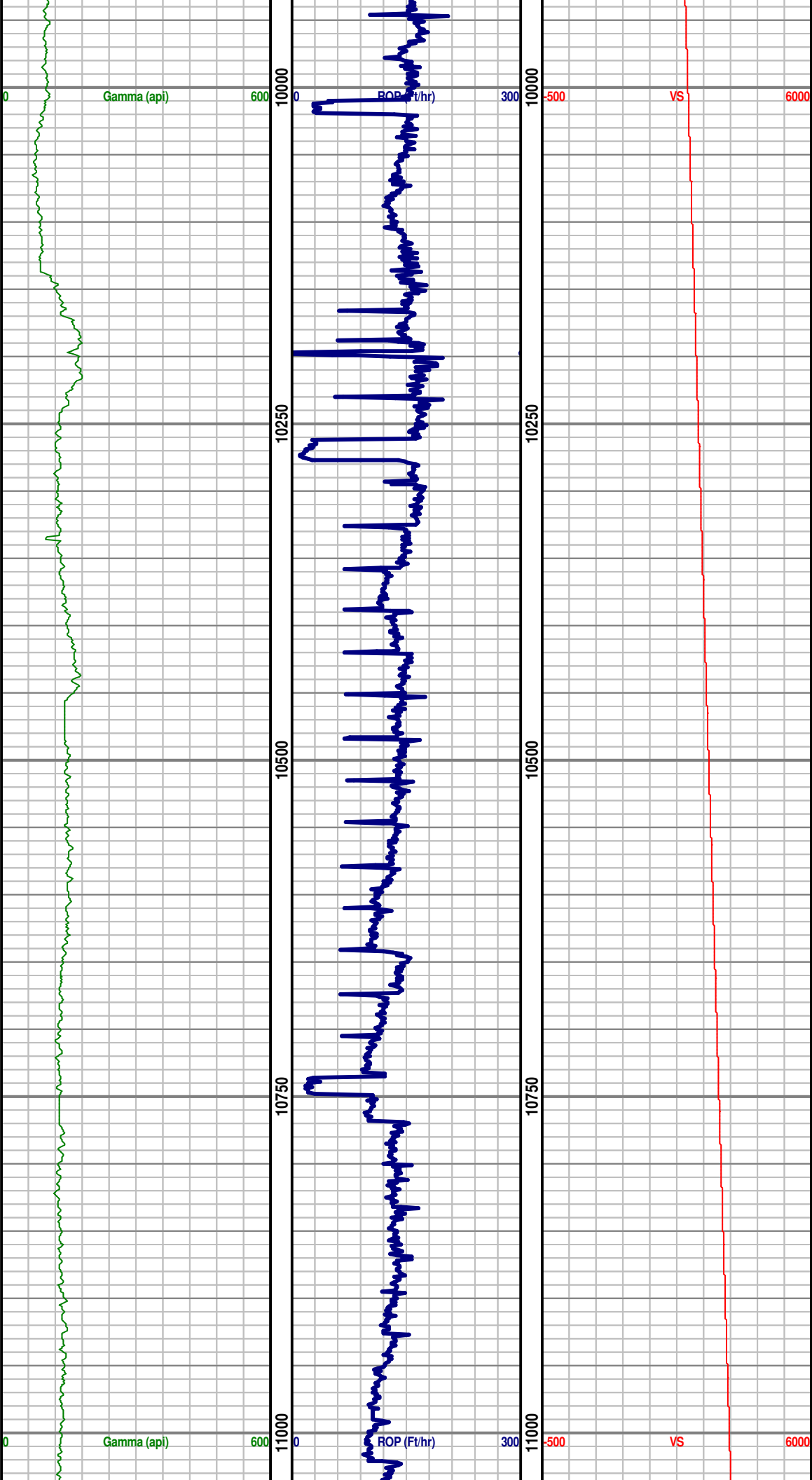
Customer Information	Well Information
<p><b>Operator:</b> PDC Energy Inc  1775 Sherman Street  Suite 3000  Denver, CO 80203</p> <p><b>Geologist:</b> Rachel Debaillon  PDC Energy, Inc.</p>	<p><b>Well Name:</b> Sunmarke 28U-334</p> <p><b>Location:</b> NENE SEC 28, 4N, 67W, 6TH  308' FNL x 210' FEL</p> <p><b>County:</b> Weld  <b>State:</b> Colorado</p>
Remote Logging Details	
<p><b>Logger:</b> HORIZON DENVER REMOTE  MANAGEMENT CENTER</p> <p><b>Log Interval:</b> 6,285' MD to 11,603' MD</p> <p><b>Start Date:</b> August 17, 2014</p> <p><b>Release Date:</b> August 22, 2014</p>	<p><b>Drilling Rig:</b> Ensign 32</p> <p><b>Total Depth:</b> 11,603' MD</p> <p><b>TD Date:</b> August 22, 2014</p> <p><b>Field:</b> Wattenberg</p> <p><b>KB Elevation:</b> 4,909'</p> <p><b>GR Elevation:</b> 4,894'</p> <p><b>API Number:</b> 05-123-38900-0000</p>

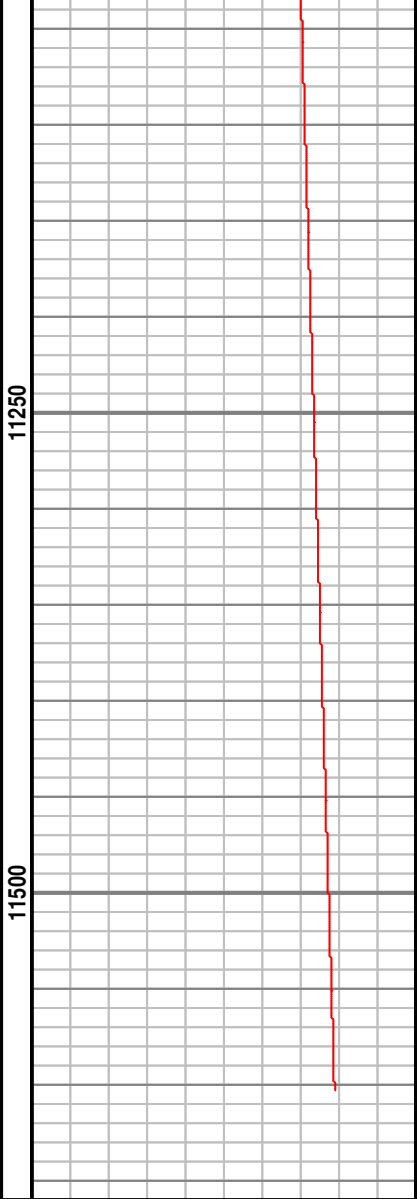
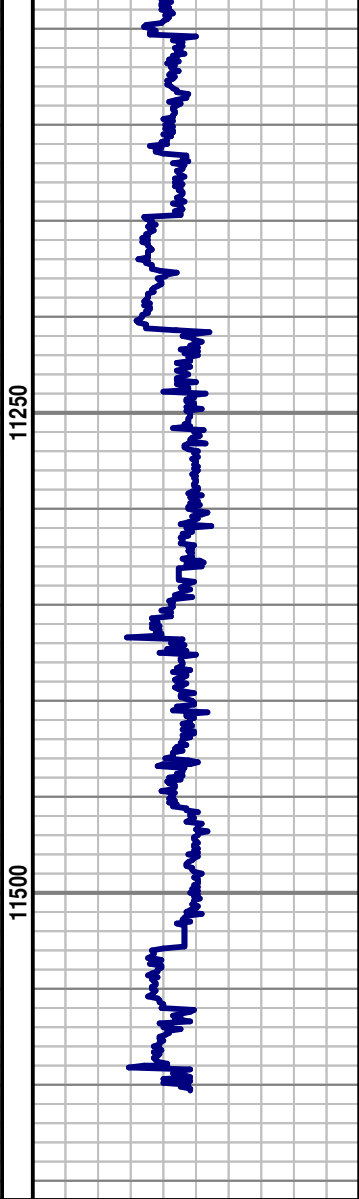
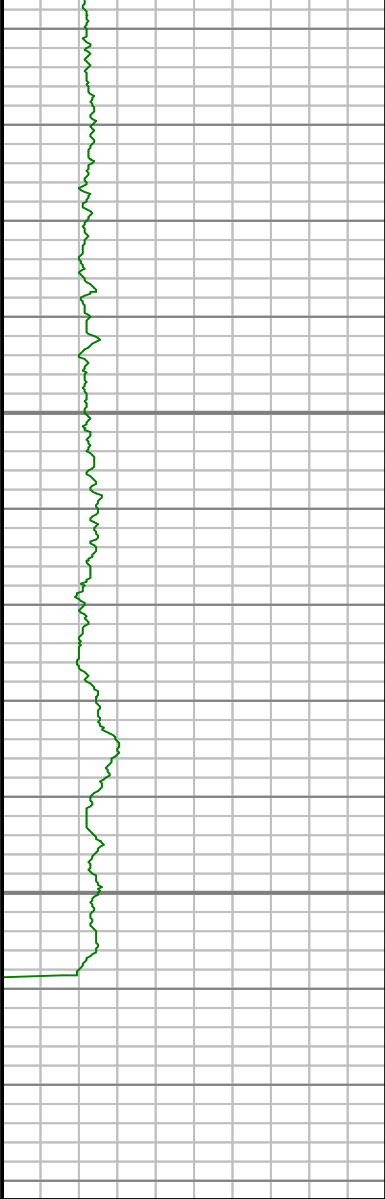












TD @ 11,603' MD  
(7,108.8' TVD,  
4,623.4' VS)  
ON 8/22/14