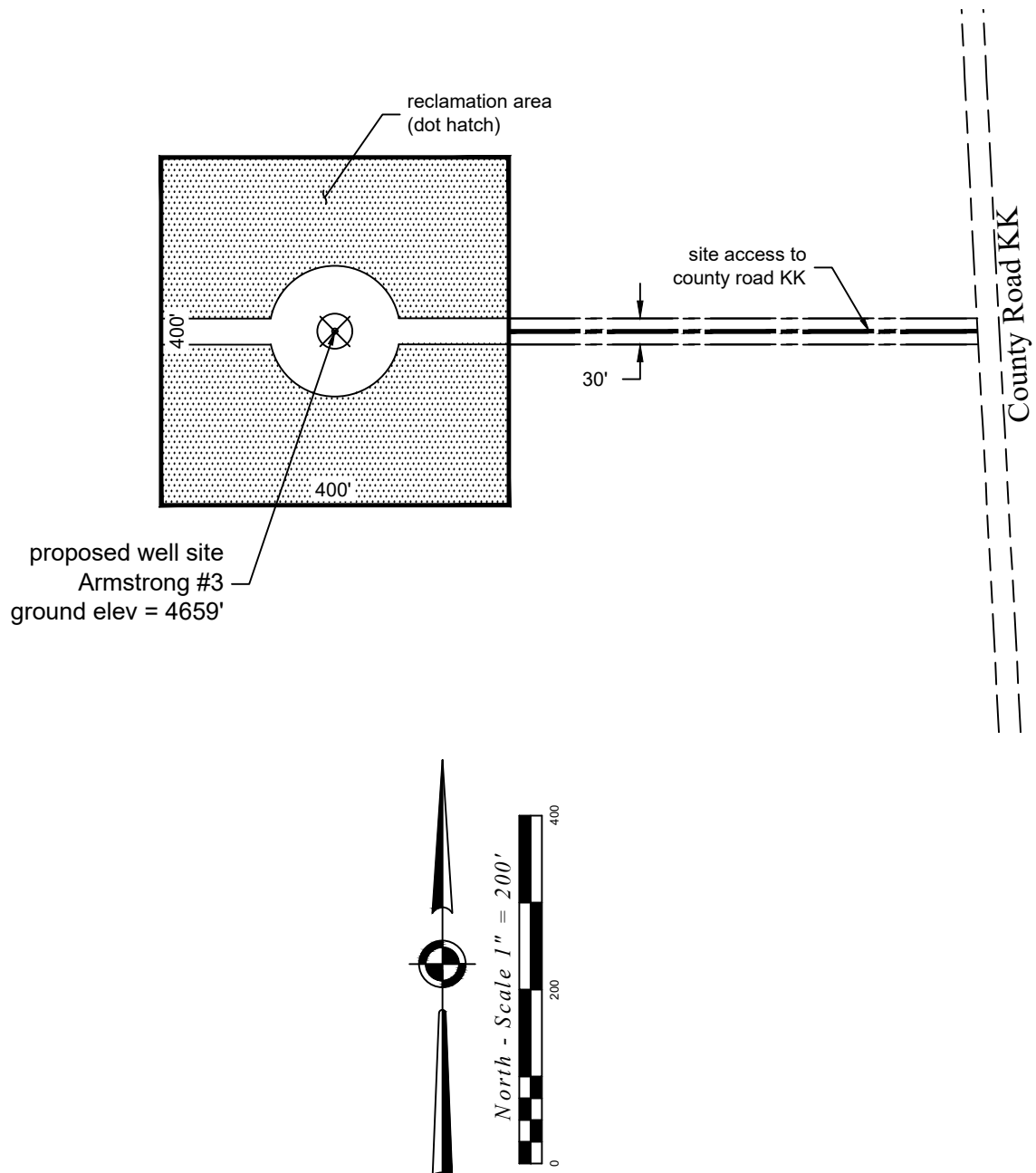


Facility Layout Drawing



Size of disturbed area during construction in acres: 4.0 acres
 Size of location after interim reclamation in acres: 0.9 acres
 Estimated location ground elevation: 4659' [NAVD88]

P:\Project\2019\19056\dwg\19056_Lay.dwg July 17, 2019 - 1:17pm

Well Name: Armstrong #3	Field Date 5.31.2019	Prepared for: Project#: 19056.001 St. Croix Operating, Inc.
Section 21-T3S-R51W-6th PM, NE-SE	Party Chief DCB	
Washington County, Colorado	Proj. Manager MDG	
	Drawing Date 7.17.2019	PLS Corporation 532 West 66th Street Loveland, Colorado 80538 970.669.2100 office - info@plscorporation.com