

# **HighPoint Resources**

**Weld County, CO (NAD83)**

**Sec 35-T05N-R61W**

**Anschutz Coffelt 5-61-35-1609B**

**Wellbore #1**

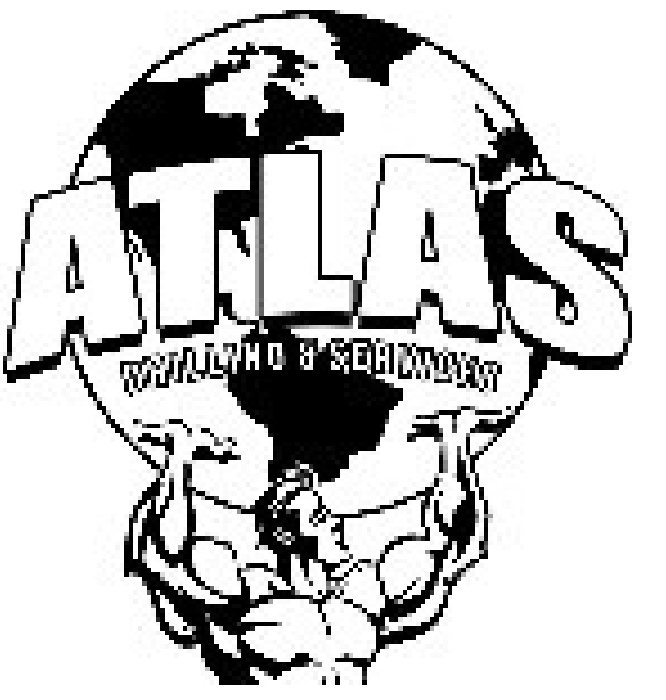
**Design: Wellbore #1**

## **Standard Survey Report**

**06 June, 2019**

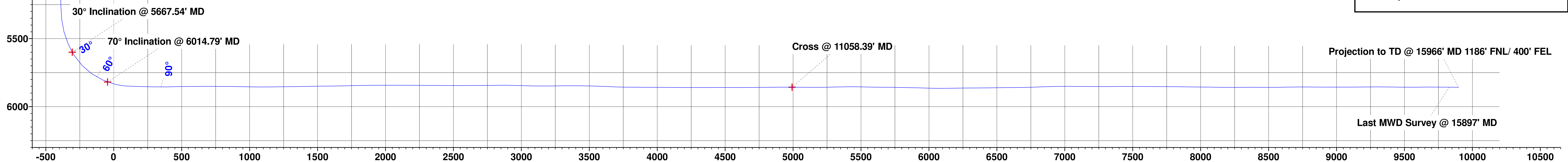
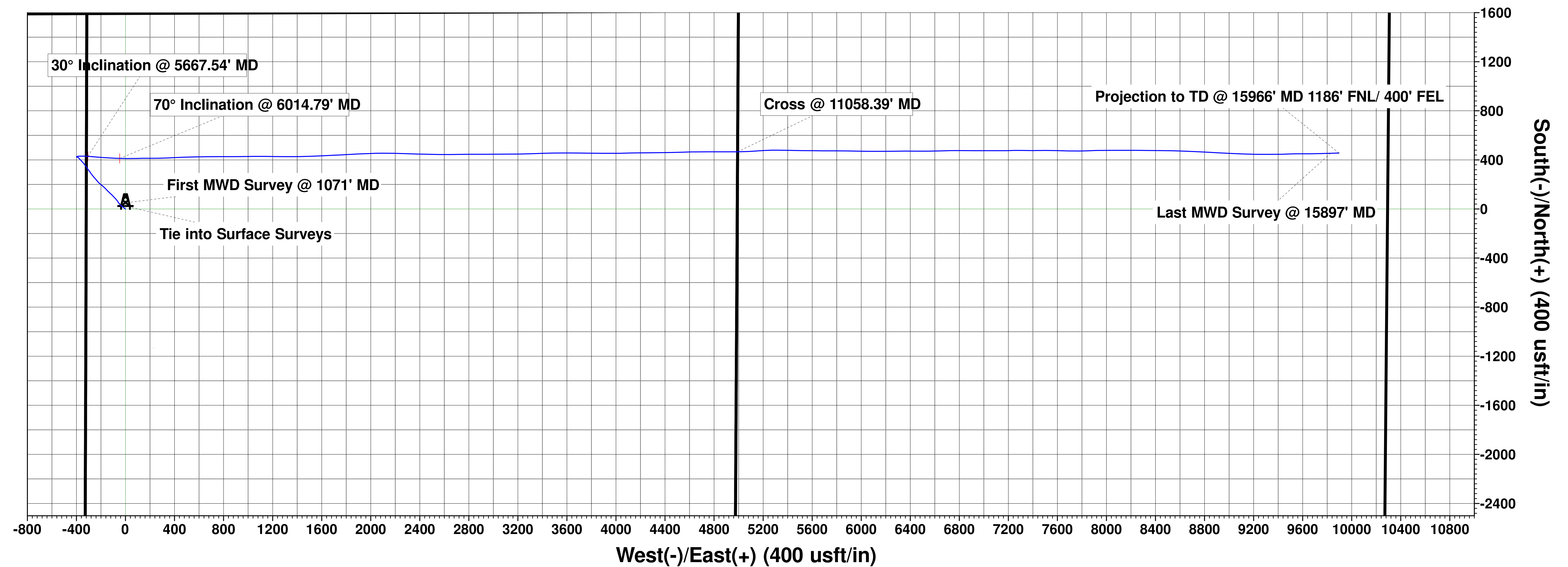
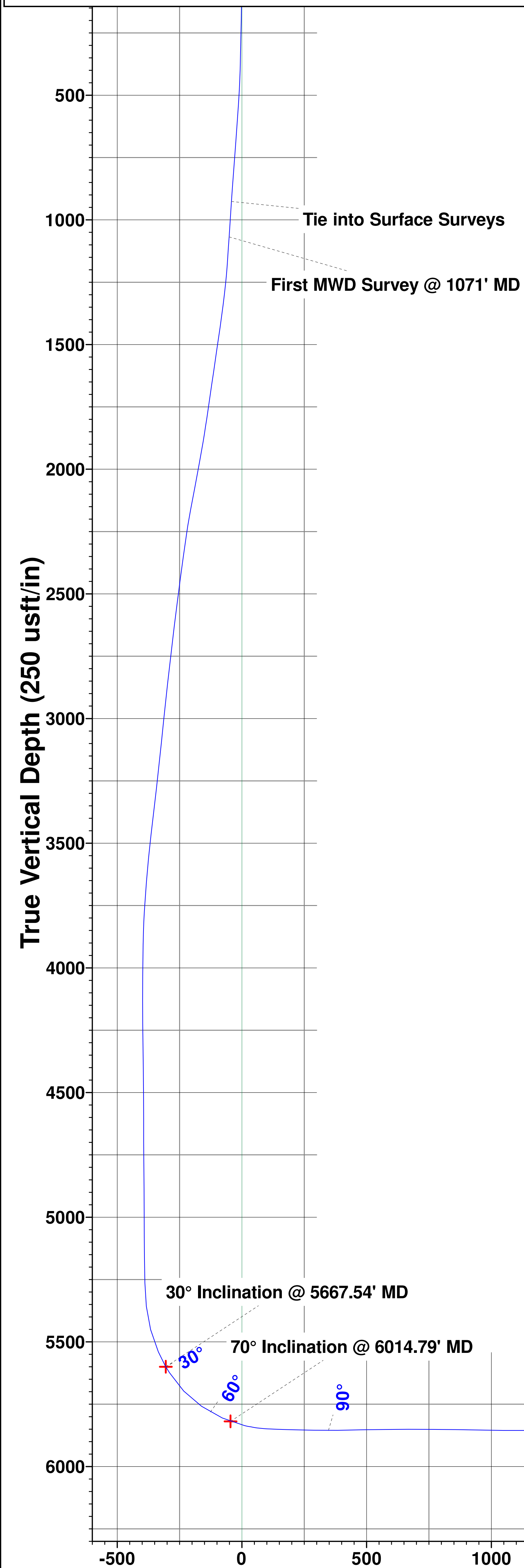


Ground Elevation:: 4491.60  
RKB Elevation: KB @ 4508.10usft (Cade 23)  
Rig Name: Cade 23

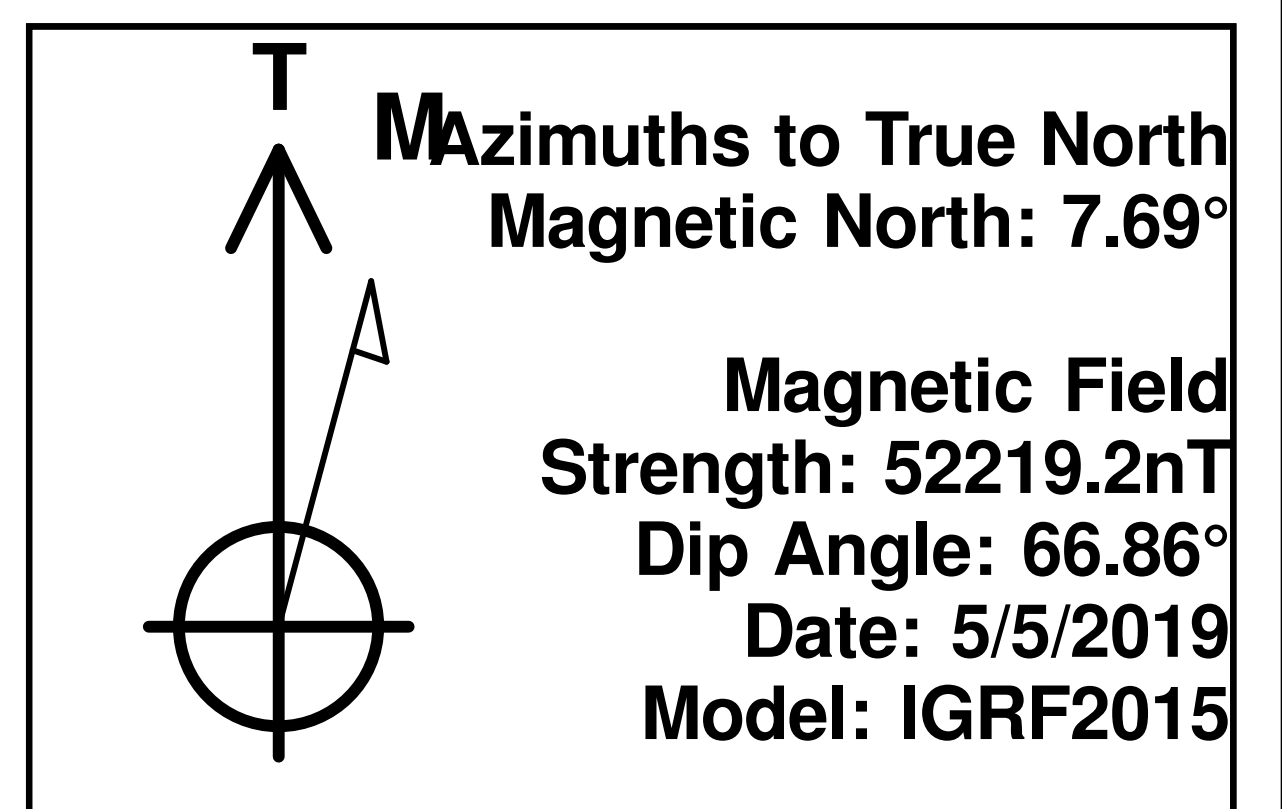


**Design: Wellbore #1 (Anschutz Coffelt 5-61-35-1609B/Wellbore #1)  
Cade 23**

ANNOTATIONS									
MD	Inc	Azi	TVD	+N/-S	+E/-W	VSect	Departure	Annotation	
928.50	5.50	315.00	926.41	33.10	-42.21	-42.10	53.85	Tie into Surface Surveys	
1071.00	6.14	323.34	1068.18	44.04	-51.59	-51.44	68.30	First MWD Survey @ 1071' MD	
5667.54	30.00	93.83	5599.98	429.15	-306.62	-305.12	691.35	30° Inclination @ 5667.54' MD	
6014.79	70.00	91.54	5818.89	412.16	-47.14	-45.70	952.02	70° Inclination @ 6014.79' MD	
11058.39	89.89	89.24	5857.13	466.31	4991.00	4992.60	5990.79	Cross @ 11058.39' MD	
15897.00	89.31	88.38	5857.01	453.89	9827.55	9829.07	10828.82	Last MWD Survey @ 15897' MD	
15966.00	89.31	88.38	5857.84	455.84	9896.51	9898.04	10897.82	Projection to TD @ 15966' MD 1186' FNL/ 400' FEL	



### Vertical Section at 89.80° (250 usft/in)



## Survey Report

<b>Company:</b>	HighPoint Resources	<b>Local Co-ordinate Reference:</b>	Well Anschutz Coffelt 5-61-35-1609B
<b>Project:</b>	Weld County, CO (NAD83)	<b>TVD Reference:</b>	KB @ 4508.10usft (Cade 23)
<b>Site:</b>	Sec 35-T05N-R61W	<b>MD Reference:</b>	KB @ 4508.10usft (Cade 23)
<b>Well:</b>	Anschutz Coffelt 5-61-35-1609B	<b>North Reference:</b>	True
<b>Wellbore:</b>	Wellbore #1	<b>Survey Calculation Method:</b>	Minimum Curvature
<b>Design:</b>	Wellbore #1	<b>Database:</b>	EDM 5000.15 Single User Db

<b>Project</b>	Weld County, CO (NAD83)		
<b>Map System:</b>	US State Plane 1983	<b>System Datum:</b>	Mean Sea Level
<b>Geo Datum:</b>	North American Datum 1983		
<b>Map Zone:</b>	Colorado Northern Zone		

Site		Sec 35-T05N-R61W			
Site Position:		Northing:	1,378,423.70 usft	Latitude:	40.364722
From:	Lat/Long	Easting:	3,366,282.02 usft	Longitude:	-104.185489
Position Uncertainty:	0.00 usft	Slot Radius:	13-3/16 "	Grid Convergence:	0.85 °

Well	Anschutz Coffelt 5-61-35-1609B					
Well Position	+N/-S	0.00 usft	Northing:	1,376,836.93 usft	Latitude:	40.360353
	+E/-W	0.00 usft	Easting:	3,366,620.48 usft	Longitude:	-104.184359
Position Uncertainty		0.00 usft	Wellhead Elevation:	usft	Ground Level:	4,491.60 usft

<b>Wellbore</b>	Wellbore #1				
<b>Magnetics</b>	<b>Model Name</b>	<b>Sample Date</b>	<b>Declination (°)</b>	<b>Dip Angle (°)</b>	<b>Field Strength (nT)</b>
	IGRF2015	5/5/2019	7.69	66.86	52,219.19201752

<b>Design</b>	Wellbore #1				
<b>Audit Notes:</b>					
<b>Version:</b>	1.0	<b>Phase:</b>	ACTUAL	<b>Tie On Depth:</b>	0.00
<b>Vertical Section:</b>	<b>Depth From (TVD) (usft)</b>	<b>+N/-S (usft)</b>	<b>+E/-W (usft)</b>	<b>Direction (°)</b>	
	0.00	0.00	0.00	89.80	

<b>Survey Program</b>	<b>Date</b>	6/6/2019			
<b>From (usft)</b>	<b>To (usft)</b>	<b>Survey (Wellbore)</b>	<b>Tool Name</b>	<b>Description</b>	
112.50	928.50	Surface Surveys (Wellbore #1)	MWD	MWD - Standard	
1,071.00	15,966.00	Atlas MWD Surveys (Wellbore #1)	MWD	MWD - Standard	

<b>Survey</b>										
<b>Measured Depth (usft)</b>	<b>Inclination (°)</b>	<b>Azimuth (°)</b>	<b>Vertical Depth (usft)</b>	<b>+N/-S (usft)</b>	<b>+E/-W (usft)</b>	<b>Vertical Section (usft)</b>	<b>Dogleg Rate (°/100usft)</b>	<b>Build Rate (°/100usft)</b>	<b>Turn Rate (°/100usft)</b>	
0.00	0.00	0.00	0.00	0.00	0.00	0.00	0.00	0.00	0.00	
112.50	1.23	299.15	112.49	0.59	-1.05	-1.05	1.09	1.09	0.00	
208.50	1.36	300.99	208.47	1.68	-2.93	-2.93	0.14	0.14	1.92	
303.50	1.80	314.61	303.43	3.30	-4.96	-4.95	0.61	0.46	14.34	
398.50	1.89	313.12	398.38	5.42	-7.17	-7.15	0.11	0.09	-1.57	
493.50	4.17	306.13	493.24	8.53	-11.10	-11.07	2.43	2.40	-7.36	
588.50	5.32	308.64	587.92	13.32	-17.33	-17.28	1.23	1.21	2.64	
683.50	4.97	301.87	682.53	18.24	-24.26	-24.20	0.74	-0.37	-7.13	
779.50	5.58	307.06	778.13	23.25	-31.52	-31.44	0.81	0.64	5.41	
874.50	5.67	315.32	872.67	29.37	-38.51	-38.40	0.86	0.09	8.69	

# Survey Report

<b>Company:</b>	HighPoint Resources	<b>Local Co-ordinate Reference:</b>	Well Anschutz Coffelt 5-61-35-1609B
<b>Project:</b>	Weld County, CO (NAD83)	<b>TVD Reference:</b>	KB @ 4508.10usft (Cade 23)
<b>Site:</b>	Sec 35-T05N-R61W	<b>MD Reference:</b>	KB @ 4508.10usft (Cade 23)
<b>Well:</b>	Anschutz Coffelt 5-61-35-1609B	<b>North Reference:</b>	True
<b>Wellbore:</b>	Wellbore #1	<b>Survey Calculation Method:</b>	Minimum Curvature
<b>Design:</b>	Wellbore #1	<b>Database:</b>	EDM 5000.15 Single User Db

Survey									
Measured Depth (usft)	Inclination (°)	Azimuth (°)	Vertical Depth (usft)	+N/-S (usft)	+E/-W (usft)	Vertical Section (usft)	Dogleg Rate (°/100usft)	Build Rate (°/100usft)	Turn Rate (°/100usft)
928.50	5.50	315.00	926.41	33.10	-42.21	-42.10	0.32	-0.31	-0.59
Tie into Surface Surveys									
1,071.00	6.14	323.34	1,068.18	44.04	-51.59	-51.44	0.74	0.45	5.85
First MWD Survey @ 1071' MD									
1,163.00	7.34	328.37	1,159.55	52.99	-57.61	-57.43	1.45	1.30	5.47
1,255.00	9.46	322.99	1,250.55	64.03	-65.24	-65.02	2.46	2.30	-5.85
1,347.00	11.22	319.95	1,341.06	76.92	-75.56	-75.29	2.00	1.91	-3.30
1,439.00	12.20	317.44	1,431.14	90.93	-87.89	-87.57	1.20	1.07	-2.73
1,531.00	11.45	315.37	1,521.19	104.59	-100.88	-100.51	0.94	-0.82	-2.25
1,623.00	12.11	313.43	1,611.25	117.73	-114.30	-113.89	0.84	0.72	-2.11
1,718.00	10.74	311.75	1,704.37	130.47	-128.15	-127.69	1.48	-1.44	-1.77
1,812.00	11.84	315.81	1,796.55	143.22	-141.40	-140.90	1.44	1.17	4.32
1,907.00	14.05	317.35	1,889.13	158.69	-156.01	-155.46	2.35	2.33	1.62
2,001.00	14.05	312.72	1,980.32	174.82	-172.12	-171.51	1.20	0.00	-4.93
2,096.00	13.88	309.82	2,072.51	189.94	-189.35	-188.68	0.76	-0.18	-3.05
2,191.00	13.61	308.67	2,164.79	204.23	-206.83	-206.11	0.40	-0.28	-1.21
2,286.00	12.51	318.14	2,257.34	218.88	-222.42	-221.66	2.53	-1.16	9.97
2,381.00	12.06	319.29	2,350.17	234.06	-235.76	-234.94	0.54	-0.47	1.21
2,475.00	11.45	319.51	2,442.20	248.60	-248.22	-247.35	0.65	-0.65	0.23
2,571.00	10.87	318.41	2,536.38	262.62	-260.42	-259.50	0.64	-0.60	-1.15
2,665.00	11.89	323.26	2,628.53	277.01	-272.10	-271.13	1.49	1.09	5.16
2,760.00	10.69	325.90	2,721.70	292.15	-282.89	-281.87	1.38	-1.26	2.78
2,855.00	11.45	322.38	2,814.93	306.91	-293.59	-292.51	1.07	0.80	-3.71
2,950.00	10.43	323.43	2,908.20	321.29	-304.47	-303.34	1.09	-1.07	1.11
3,045.00	10.08	324.53	3,001.68	334.96	-314.41	-313.24	0.42	-0.37	1.16
3,141.00	9.99	324.40	3,096.21	348.58	-324.14	-322.92	0.10	-0.09	-0.14
3,235.00	10.47	324.31	3,188.72	362.14	-333.87	-332.60	0.51	0.51	-0.10
3,329.00	10.12	319.73	3,281.21	375.38	-344.19	-342.87	0.95	-0.37	-4.87
3,423.00	9.85	316.78	3,373.78	387.54	-355.03	-353.68	0.62	-0.29	-3.14
3,517.00	9.50	316.34	3,466.45	399.01	-365.89	-364.50	0.38	-0.37	-0.47
3,612.00	8.04	317.48	3,560.33	409.58	-375.80	-374.36	1.55	-1.54	1.20
3,707.00	6.19	313.78	3,654.60	418.02	-383.98	-382.52	2.01	-1.95	-3.89
3,801.00	4.64	302.02	3,748.18	423.55	-390.87	-389.39	2.02	-1.65	-12.51
3,896.00	2.30	291.13	3,843.00	426.27	-395.90	-394.41	2.55	-2.46	-11.46
3,991.00	0.75	214.06	3,937.97	426.44	-398.03	-396.54	2.37	-1.63	-81.13
4,086.00	1.06	250.90	4,032.96	425.64	-399.21	-397.72	0.68	0.33	38.78
4,181.00	0.71	171.05	4,127.95	424.77	-399.95	-398.46	1.23	-0.37	-84.05
4,276.00	0.80	127.77	4,222.94	423.78	-399.33	-397.85	0.59	0.09	-45.56
4,372.00	1.02	129.05	4,318.93	422.83	-398.14	-396.66	0.23	0.23	1.33
4,467.00	1.28	131.65	4,413.91	421.60	-396.69	-395.22	0.28	0.27	2.74
4,561.00	0.35	34.84	4,507.90	421.13	-395.74	-394.27	1.45	-0.99	-102.99
4,655.00	0.31	358.60	4,601.90	421.62	-395.58	-394.11	0.22	-0.04	-38.55
4,750.00	0.62	26.33	4,696.90	422.34	-395.36	-393.88	0.39	0.33	29.19

# Survey Report

<b>Company:</b>	HighPoint Resources	<b>Local Co-ordinate Reference:</b>	Well Anschutz Coffelt 5-61-35-1609B
<b>Project:</b>	Weld County, CO (NAD83)	<b>TVD Reference:</b>	KB @ 4508.10usft (Cade 23)
<b>Site:</b>	Sec 35-T05N-R61W	<b>MD Reference:</b>	KB @ 4508.10usft (Cade 23)
<b>Well:</b>	Anschutz Coffelt 5-61-35-1609B	<b>North Reference:</b>	True
<b>Wellbore:</b>	Wellbore #1	<b>Survey Calculation Method:</b>	Minimum Curvature
<b>Design:</b>	Wellbore #1	<b>Database:</b>	EDM 5000.15 Single User Db

Survey										
Measured Depth (usft)	Inclination (°)	Azimuth (°)	Vertical Depth (usft)	+N/-S (usft)	+E/-W (usft)	Vertical Section (usft)	Dogleg Rate (°/100usft)	Build Rate (°/100usft)	Turn Rate (°/100usft)	
4,845.00	0.97	42.72	4,791.89	423.39	-394.59	-393.11	0.44	0.37	17.25	
4,939.00	0.75	17.78	4,885.88	424.56	-393.86	-392.38	0.46	-0.23	-26.53	
5,034.00	0.66	14.56	4,980.87	425.69	-393.53	-392.04	0.10	-0.09	-3.39	
5,129.00	0.62	31.79	5,075.87	426.65	-393.12	-391.63	0.21	-0.04	18.14	
5,223.00	1.37	39.29	5,169.85	427.95	-392.14	-390.65	0.81	0.80	7.98	
5,317.00	1.33	41.93	5,263.82	429.64	-390.70	-389.20	0.08	-0.04	2.81	
5,411.00	6.23	92.48	5,357.61	430.23	-384.87	-383.37	5.83	5.21	53.78	
5,506.00	14.72	87.23	5,450.94	430.59	-367.64	-366.13	8.98	8.94	-5.53	
5,600.00	23.46	91.59	5,539.69	430.65	-336.94	-335.44	9.41	9.30	4.64	
5,663.00	29.56	93.67	5,596.04	429.30	-308.87	-307.37	9.79	9.68	3.30	
5,667.54	30.00	93.83	5,599.98	429.15	-306.62	-305.12	9.83	9.68	3.54	
30° Inclination @ 5667.54' MD										
5,695.00	32.66	94.72	5,623.43	428.09	-292.39	-290.89	9.83	9.69	3.24	
5,789.00	43.53	95.34	5,697.30	422.97	-234.71	-233.23	11.57	11.56	0.66	
5,883.00	55.24	93.36	5,758.39	417.68	-163.68	-162.22	12.56	12.46	-2.11	
5,979.00	65.93	92.61	5,805.47	413.36	-80.29	-78.84	11.16	11.14	-0.78	
6,014.79	70.00	91.54	5,818.89	412.16	-47.14	-45.70	11.69	11.36	-2.98	
70° Inclination @ 6014.79' MD										
6,073.00	76.62	89.92	5,835.61	411.46	8.58	10.01	11.69	11.38	-2.79	
6,168.00	86.96	88.95	5,849.15	412.40	102.47	103.91	10.93	10.88	-1.02	
6,179.00	87.32	88.91	5,849.70	412.60	113.46	114.89	3.29	3.27	-0.36	
6,259.00	89.00	90.14	5,852.27	413.26	193.41	194.85	2.60	2.10	1.54	
6,353.00	88.51	88.60	5,854.31	414.30	287.38	288.82	1.72	-0.52	-1.64	
6,448.00	90.94	87.19	5,854.77	417.79	382.30	383.76	2.96	2.56	-1.48	
6,542.00	91.30	87.85	5,852.93	421.85	476.19	477.66	0.80	0.38	0.70	
6,637.00	90.54	88.69	5,851.41	424.72	571.14	572.62	1.19	-0.80	0.88	
6,731.00	90.10	89.61	5,850.88	426.12	665.12	666.61	1.08	-0.47	0.98	
6,827.00	89.70	89.88	5,851.05	426.54	761.12	762.61	0.50	-0.42	0.28	
6,921.00	89.31	89.88	5,851.86	426.74	855.12	856.60	0.41	-0.41	0.00	
7,016.00	88.56	89.39	5,853.63	427.34	950.10	951.59	0.94	-0.79	-0.52	
7,112.00	89.48	89.21	5,855.27	428.52	1,046.08	1,047.57	0.98	0.96	-0.19	
7,206.00	90.81	90.49	5,855.03	428.76	1,140.07	1,141.56	1.96	1.41	1.36	
7,301.00	90.68	90.98	5,853.80	427.54	1,235.06	1,236.54	0.53	-0.14	0.52	
7,397.00	90.68	90.14	5,852.66	426.61	1,331.04	1,332.53	0.87	0.00	-0.88	
7,492.00	91.07	88.77	5,851.21	427.51	1,426.03	1,427.51	1.50	0.41	-1.44	
7,587.00	90.77	87.94	5,849.68	430.24	1,520.97	1,522.47	0.93	-0.32	-0.87	
7,681.00	90.41	87.28	5,848.71	434.16	1,614.89	1,616.39	0.80	-0.38	-0.70	
7,776.00	91.74	87.50	5,846.93	438.48	1,709.77	1,711.29	1.42	1.40	0.23	
7,871.00	90.94	86.39	5,844.71	443.54	1,804.61	1,806.14	1.44	-0.84	-1.17	
7,965.00	90.68	87.36	5,843.38	448.67	1,898.46	1,900.01	1.07	-0.28	1.03	
8,060.00	90.01	88.20	5,842.81	452.35	1,993.38	1,994.95	1.13	-0.71	0.88	
8,154.00	89.97	89.26	5,842.82	454.43	2,087.36	2,088.93	1.13	-0.04	1.13	
8,249.00	89.53	91.51	5,843.24	453.79	2,182.35	2,183.92	2.41	-0.46	2.37	
8,343.00	90.10	91.77	5,843.54	451.10	2,276.31	2,277.87	0.67	0.61	0.28	



# Survey Report

<b>Company:</b>	HighPoint Resources	<b>Local Co-ordinate Reference:</b>	Well Anschutz Coffelt 5-61-35-1609B
<b>Project:</b>	Weld County, CO (NAD83)	<b>TVD Reference:</b>	KB @ 4508.10usft (Cade 23)
<b>Site:</b>	Sec 35-T05N-R61W	<b>MD Reference:</b>	KB @ 4508.10usft (Cade 23)
<b>Well:</b>	Anschutz Coffelt 5-61-35-1609B	<b>North Reference:</b>	True
<b>Wellbore:</b>	Wellbore #1	<b>Survey Calculation Method:</b>	Minimum Curvature
<b>Design:</b>	Wellbore #1	<b>Database:</b>	EDM 5000.15 Single User Db

Survey										
Measured Depth (usft)	Inclination (°)	Azimuth (°)	Vertical Depth (usft)	+N/-S (usft)	+E/-W (usft)	Vertical Section (usft)	Dogleg Rate (°/100usft)	Build Rate (°/100usft)	Turn Rate (°/100usft)	
8,438.00	89.44	91.51	5,843.92	448.38	2,371.27	2,372.82	0.75	-0.69	-0.27	
8,534.00	89.44	91.59	5,844.86	445.79	2,467.23	2,468.77	0.08	0.00	0.08	
8,629.00	90.50	90.67	5,844.91	443.91	2,562.21	2,563.74	1.48	1.12	-0.97	
8,723.00	89.75	89.35	5,844.71	443.90	2,656.20	2,657.74	1.62	-0.80	-1.40	
8,818.00	91.34	88.95	5,843.80	445.31	2,751.19	2,752.72	1.73	1.67	-0.42	
8,912.00	90.15	90.18	5,842.58	446.02	2,845.17	2,846.71	1.82	-1.27	1.31	
9,007.00	88.33	89.92	5,843.84	445.94	2,940.16	2,941.70	1.94	-1.92	-0.27	
9,101.00	88.20	89.48	5,846.69	446.43	3,034.11	3,035.65	0.49	-0.14	-0.47	
9,196.00	89.70	89.88	5,848.43	446.96	3,129.09	3,130.64	1.63	1.58	0.42	
9,290.00	90.72	89.08	5,848.08	447.81	3,223.09	3,224.63	1.38	1.09	-0.85	
9,385.00	90.90	87.67	5,846.74	450.51	3,318.04	3,319.59	1.50	0.19	-1.48	
9,480.00	89.31	88.29	5,846.57	453.85	3,412.98	3,414.54	1.80	-1.67	0.65	
9,574.00	88.64	89.39	5,848.25	455.76	3,506.94	3,508.51	1.37	-0.71	1.17	
9,670.00	87.80	89.70	5,851.23	456.52	3,602.89	3,604.46	0.93	-0.88	0.32	
9,766.00	87.58	90.98	5,855.10	455.95	3,698.81	3,700.38	1.35	-0.23	1.33	
9,861.00	89.88	90.80	5,857.21	454.47	3,793.77	3,795.33	2.43	2.42	-0.19	
9,957.00	89.22	90.01	5,857.96	453.80	3,889.76	3,891.32	1.07	-0.69	-0.82	
10,052.00	90.28	89.88	5,858.37	453.89	3,984.76	3,986.32	1.12	1.12	-0.14	
10,148.00	89.31	88.29	5,858.72	455.42	4,080.74	4,082.30	1.94	-1.01	-1.66	
10,243.00	89.70	89.88	5,859.54	456.94	4,175.72	4,177.29	1.72	0.41	1.67	
10,338.00	90.19	88.99	5,859.63	457.87	4,270.71	4,272.29	1.07	0.52	-0.94	
10,434.00	90.19	89.48	5,859.31	459.16	4,366.71	4,368.28	0.51	0.00	0.51	
10,529.00	90.01	88.77	5,859.14	460.61	4,461.69	4,463.27	0.77	-0.19	-0.75	
10,625.00	89.62	87.80	5,859.45	463.48	4,557.65	4,559.24	1.09	-0.41	-1.01	
10,719.00	90.50	89.88	5,859.36	465.38	4,651.62	4,653.22	2.40	0.94	2.21	
10,813.00	90.41	89.79	5,858.61	465.65	4,745.62	4,747.22	0.14	-0.10	-0.10	
10,908.00	90.50	89.79	5,857.86	466.00	4,840.62	4,842.21	0.09	0.09	0.00	
11,002.00	90.28	90.18	5,857.22	466.03	4,934.61	4,936.21	0.48	-0.23	0.41	
11,058.39	89.89	89.24	5,857.13	466.31	4,991.00	4,992.60	1.80	-0.69	-1.66	
Cross @ 11058.39' MD										
11,097.00	89.62	88.60	5,857.30	467.04	5,029.60	5,031.20	1.80	-0.69	-1.66	
11,192.00	89.40	85.91	5,858.11	471.59	5,124.48	5,126.10	2.84	-0.23	-2.83	
11,287.00	90.59	87.10	5,858.12	477.38	5,219.30	5,220.94	1.77	1.25	1.25	
11,381.00	92.18	90.58	5,855.85	479.28	5,313.24	5,314.88	4.07	1.69	3.70	
11,475.00	90.10	91.20	5,853.98	477.82	5,407.20	5,408.84	2.31	-2.21	0.66	
11,570.00	88.69	90.58	5,854.98	476.34	5,502.18	5,503.81	1.62	-1.48	-0.65	
11,664.00	89.09	90.89	5,856.80	475.14	5,596.16	5,597.78	0.54	0.43	0.33	
11,758.00	90.01	90.10	5,857.54	474.33	5,690.15	5,691.77	1.29	0.98	-0.84	
11,854.00	88.20	90.18	5,859.04	474.09	5,786.13	5,787.75	1.89	-1.89	0.08	
11,948.00	89.40	90.98	5,861.01	473.14	5,880.11	5,881.72	1.53	1.28	0.85	
12,043.00	87.58	91.11	5,863.51	471.41	5,975.05	5,976.66	1.92	-1.92	0.14	
12,138.00	89.88	90.58	5,865.62	470.01	6,070.01	6,071.62	2.48	2.42	-0.56	
12,233.00	91.12	89.88	5,864.79	469.63	6,165.01	6,166.61	1.50	1.31	-0.74	

# Survey Report

<b>Company:</b>	HighPoint Resources	<b>Local Co-ordinate Reference:</b>	Well Anschutz Coffelt 5-61-35-1609B
<b>Project:</b>	Weld County, CO (NAD83)	<b>TVD Reference:</b>	KB @ 4508.10usft (Cade 23)
<b>Site:</b>	Sec 35-T05N-R61W	<b>MD Reference:</b>	KB @ 4508.10usft (Cade 23)
<b>Well:</b>	Anschutz Coffelt 5-61-35-1609B	<b>North Reference:</b>	True
<b>Wellbore:</b>	Wellbore #1	<b>Survey Calculation Method:</b>	Minimum Curvature
<b>Design:</b>	Wellbore #1	<b>Database:</b>	EDM 5000.15 Single User Db

Survey										
Measured Depth (usft)	Inclination (°)	Azimuth (°)	Vertical Depth (usft)	+N/-S (usft)	+E/-W (usft)	Vertical Section (usft)	Dogleg Rate (°/100usft)	Build Rate (°/100usft)	Turn Rate (°/100usft)	
12,329.00	90.90	88.91	5,863.09	470.64	6,260.99	6,262.59	1.04	-0.23	-1.01	
12,425.00	89.62	89.61	5,862.66	471.88	6,356.97	6,358.58	1.52	-1.33	0.73	
12,519.00	91.30	90.80	5,861.90	471.54	6,450.96	6,452.57	2.19	1.79	1.27	
12,614.00	90.99	89.48	5,860.01	471.31	6,545.94	6,547.55	1.43	-0.33	-1.39	
12,710.00	89.62	87.89	5,859.49	473.52	6,641.91	6,643.52	2.19	-1.43	-1.66	
12,804.00	91.91	88.69	5,858.24	476.32	6,735.85	6,737.48	2.58	2.44	0.85	
12,899.00	92.49	91.59	5,854.59	476.09	6,830.77	6,832.39	3.11	0.61	3.05	
12,994.00	91.38	89.48	5,851.38	475.20	6,925.71	6,927.32	2.51	-1.17	-2.22	
13,088.00	89.48	90.10	5,850.68	475.55	7,019.70	7,021.32	2.13	-2.02	0.66	
13,183.00	89.79	90.40	5,851.28	475.13	7,114.70	7,116.31	0.45	0.33	0.32	
13,278.00	88.82	88.38	5,852.44	476.14	7,209.68	7,211.30	2.36	-1.02	-2.13	
13,374.00	90.72	90.58	5,852.82	477.01	7,305.66	7,307.28	3.03	1.98	2.29	
13,469.00	91.12	90.18	5,851.30	476.38	7,400.65	7,402.27	0.60	0.42	-0.42	
13,563.00	88.91	88.77	5,851.27	477.25	7,494.64	7,496.26	2.79	-2.35	-1.50	
13,658.00	90.01	92.39	5,852.17	476.28	7,589.61	7,591.23	3.98	1.16	3.81	
13,753.00	89.40	91.20	5,852.66	473.31	7,684.56	7,686.17	1.41	-0.64	-1.25	
13,848.00	89.62	89.48	5,853.47	472.74	7,779.55	7,781.15	1.83	0.23	-1.81	
13,943.00	89.00	87.50	5,854.61	475.25	7,874.51	7,876.12	2.18	-0.65	-2.08	
14,038.00	89.79	89.79	5,855.62	477.49	7,969.47	7,971.09	2.55	0.83	2.41	
14,133.00	89.31	89.88	5,856.36	477.77	8,064.46	8,066.08	0.51	-0.51	0.09	
14,228.00	88.51	89.48	5,858.17	478.30	8,159.44	8,161.06	0.94	-0.84	-0.42	
14,324.00	90.90	90.98	5,858.66	477.91	8,255.43	8,257.05	2.94	2.49	1.56	
14,420.00	90.19	90.58	5,857.75	476.61	8,351.42	8,353.03	0.85	-0.74	-0.42	
14,515.00	88.91	90.18	5,858.50	475.98	8,446.41	8,448.02	1.41	-1.35	-0.42	
14,610.00	91.30	91.37	5,858.32	474.69	8,541.39	8,543.00	2.81	2.52	1.25	
14,706.00	91.12	93.09	5,856.30	470.96	8,637.30	8,638.89	1.80	-0.19	1.79	
14,801.00	89.88	91.90	5,855.47	466.82	8,732.20	8,733.78	1.81	-1.31	-1.25	
14,896.00	89.31	93.27	5,856.14	462.54	8,827.10	8,828.66	1.56	-0.60	1.44	
14,991.00	90.10	93.18	5,856.63	457.19	8,921.94	8,923.49	0.84	0.83	-0.09	
15,086.00	90.01	92.30	5,856.54	452.65	9,016.84	9,018.36	0.93	-0.09	-0.93	
15,181.00	89.88	92.61	5,856.63	448.58	9,111.75	9,113.26	0.35	-0.14	0.33	
15,272.00	91.12	90.58	5,855.83	446.05	9,202.70	9,204.20	2.61	1.36	-2.23	
15,364.00	90.01	90.18	5,854.93	445.44	9,294.69	9,296.19	1.28	-1.21	-0.43	
15,456.00	89.22	89.61	5,855.54	445.61	9,386.69	9,388.19	1.06	-0.86	-0.62	
15,549.00	88.69	87.67	5,857.24	447.81	9,479.64	9,481.15	2.16	-0.57	-2.09	
15,641.00	91.12	89.61	5,857.39	450.00	9,571.61	9,573.12	3.38	2.64	2.11	
15,733.00	90.41	90.01	5,856.16	450.30	9,663.60	9,665.11	0.89	-0.77	0.43	
15,825.00	89.48	88.20	5,856.25	451.74	9,755.58	9,757.10	2.21	-1.01	-1.97	
15,897.00	89.31	88.38	5,857.01	453.89	9,827.55	9,829.07	0.34	-0.24	0.25	
Last MWD Survey @ 15897' MD										
15,966.00	89.31	88.38	5,857.84	455.84	9,896.51	9,898.04	0.00	0.00	0.00	
Projection to TD @ 15966' MD 1186' FNL/ 400' FEL										

## Survey Report

<b>Company:</b>	HighPoint Resources	<b>Local Co-ordinate Reference:</b>	Well Anschutz Coffelt 5-61-35-1609B
<b>Project:</b>	Weld County, CO (NAD83)	<b>TVD Reference:</b>	KB @ 4508.10usft (Cade 23)
<b>Site:</b>	Sec 35-T05N-R61W	<b>MD Reference:</b>	KB @ 4508.10usft (Cade 23)
<b>Well:</b>	Anschutz Coffelt 5-61-35-1609B	<b>North Reference:</b>	True
<b>Wellbore:</b>	Wellbore #1	<b>Survey Calculation Method:</b>	Minimum Curvature
<b>Design:</b>	Wellbore #1	<b>Database:</b>	EDM 5000.15 Single User Db

Design Targets									
Target Name - hit/miss target - Shape	Dip Angle (°)	Dip Dir. (°)	TVD (usft)	+N/-S (usft)	+E/-W (usft)	Northing (usft)	Easting (usft)	Latitude	Longitude
30° Inclination @ 5667.5 - actual wellpath hits target center - Point	0.00	0.00	5,599.98	429.15	-306.62	1,377,261.49	3,366,307.52	40.361531	-104.185460
70° Inclination @ 6014.7 - actual wellpath misses target center by 0.01usft at 6014.79usft MD (5818.89 TVD, 412.16 N, -47.14 E) - Point	0.00	0.00	5,818.89	412.15	-47.14	1,377,248.34	3,366,567.23	40.361484	-104.184528
Cross @ 11058.39' MD - actual wellpath hits target center - Point	0.00	0.00	5,857.13	466.31	4,991.00	1,377,377.24	3,371,604.01	40.361632	-104.166449

Design Annotations				
Measured Depth (usft)	Vertical Depth (usft)	Local Coordinates		Comment
		+N/-S (usft)	+E/-W (usft)	
928.50	926.41	33.10	-42.21	Tie into Surface Surveys
1,071.00	1,068.18	44.04	-51.59	First MWD Survey @ 1071' MD
5,667.54	5,599.98	429.15	-306.62	30° Inclination @ 5667.54' MD
6,014.79	5,818.89	412.16	-47.14	70° Inclination @ 6014.79' MD
11,058.39	5,857.13	466.31	4,991.00	Cross @ 11058.39' MD
15,897.00	5,857.01	453.89	9,827.55	Last MWD Survey @ 15897' MD
15,966.00	5,857.84	455.84	9,896.51	Projection to TD @ 15966' MD 1186' FNL/ 400' FEL

Checked By: \_\_\_\_\_ Approved By: \_\_\_\_\_ Date: \_\_\_\_\_