

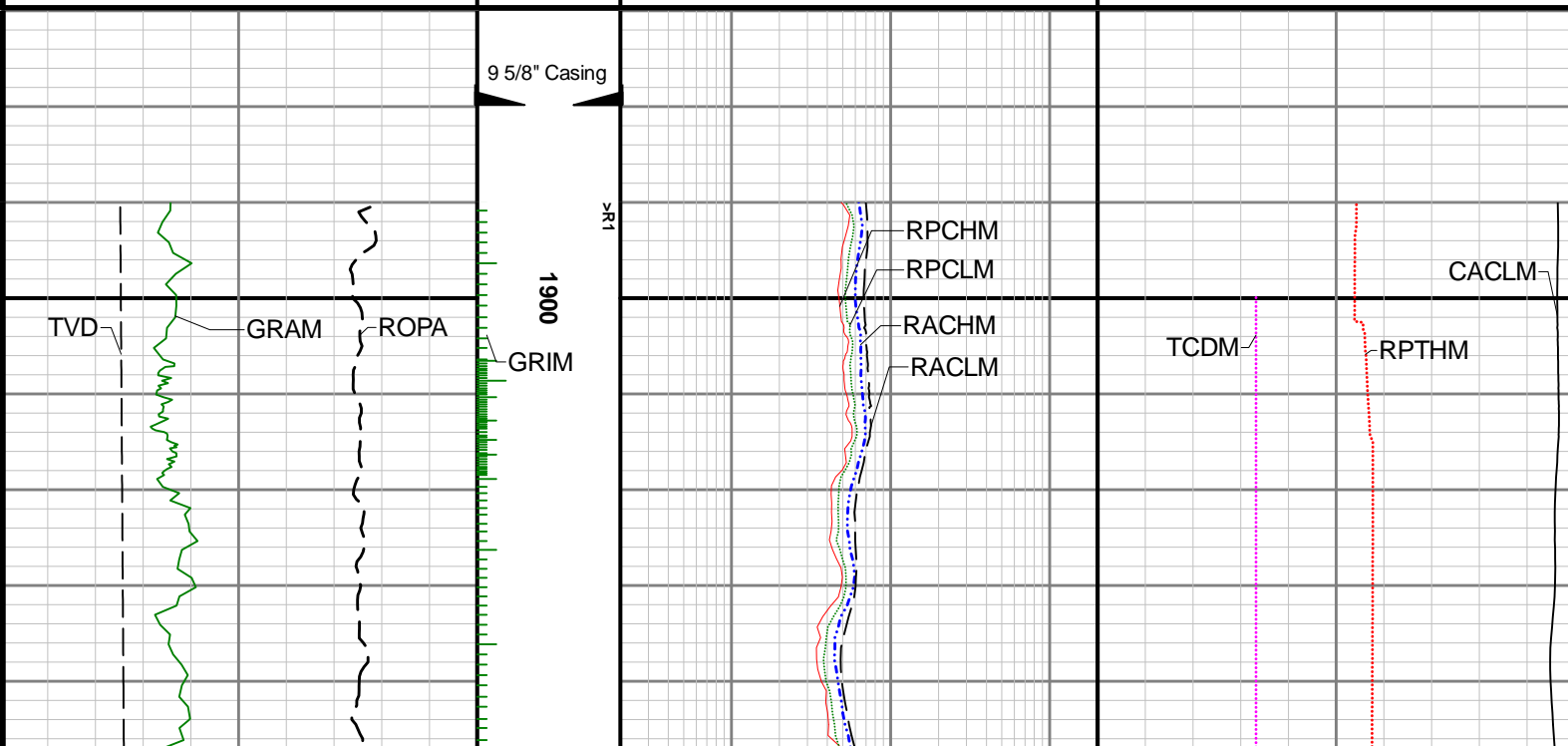


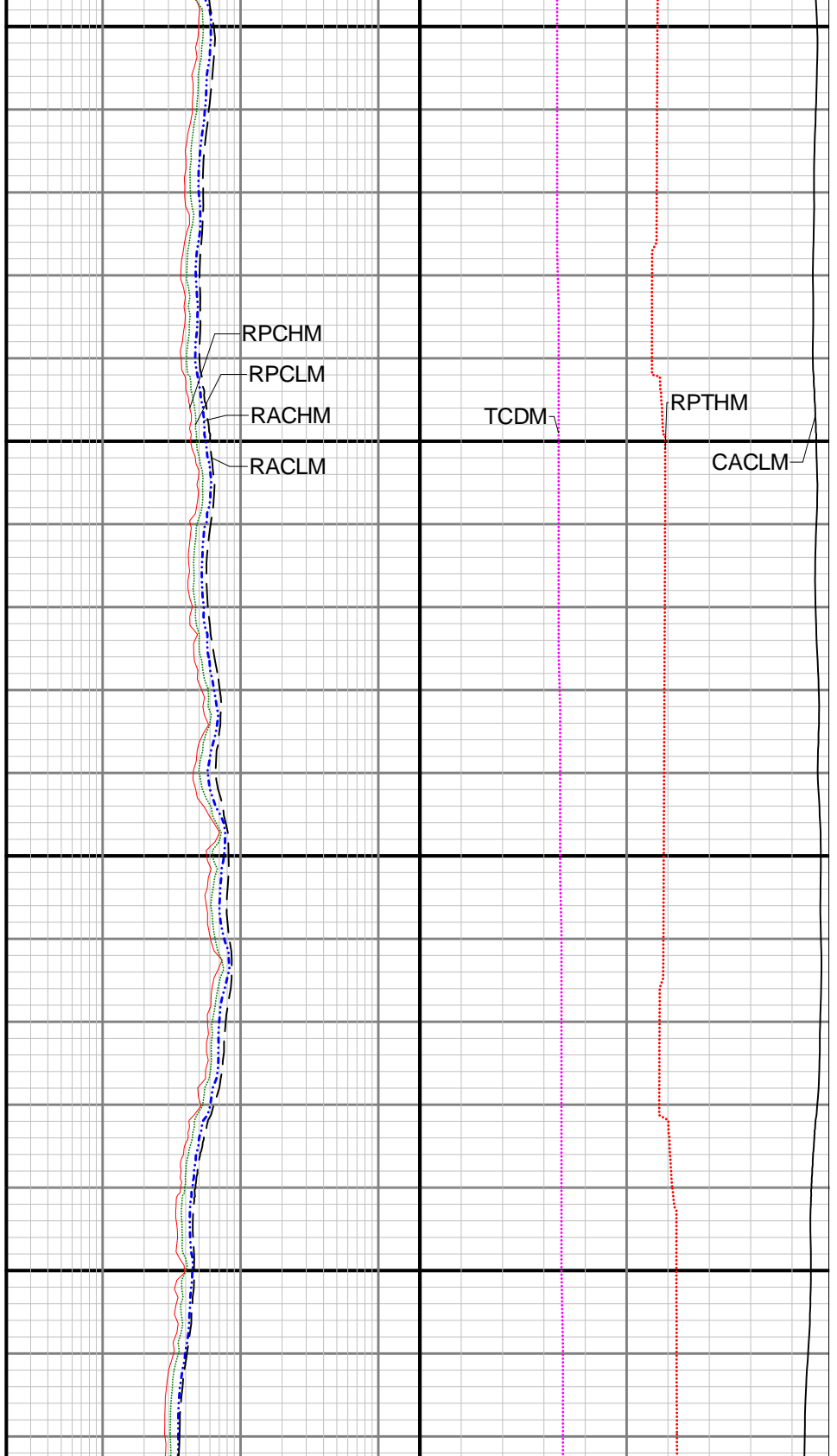
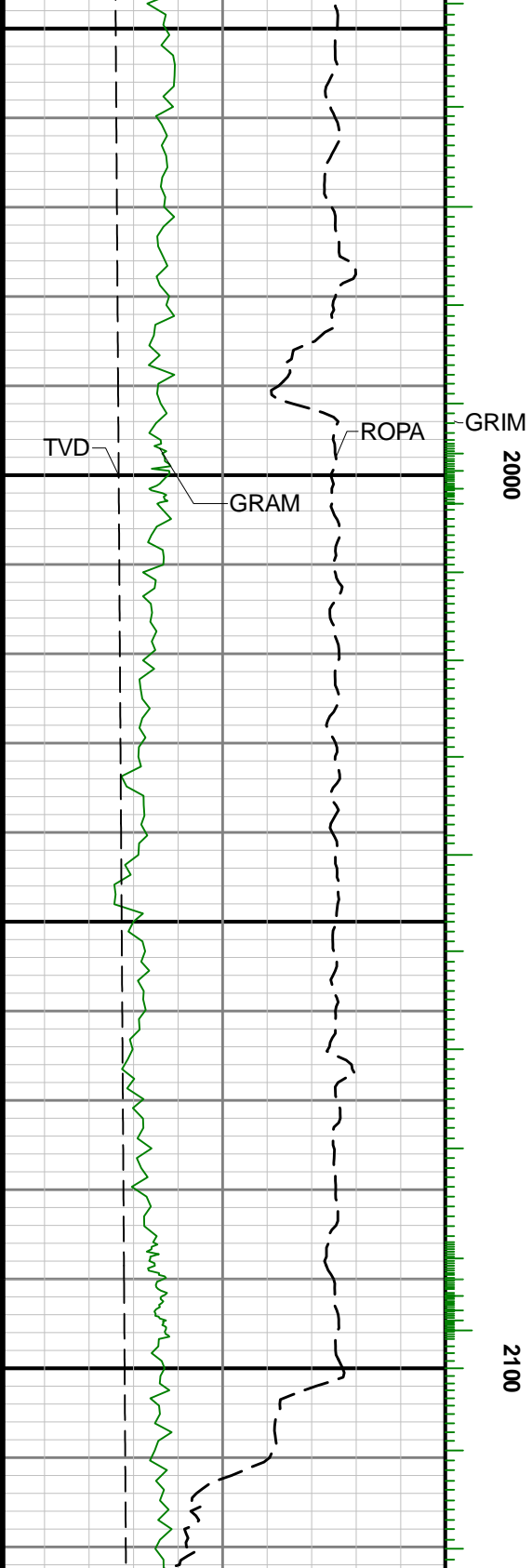
Crew											
Name	Arrive Wellsite	Depart Wellsite	Name	Arrive Wellsite	Depart Wellsite	Name	Arrive Wellsite	Depart Wellsite			
Kaewan Gardi	2019-04-30	2019-05-04	Mohammad Odetallah	2019-04-30	2019-05-04	Omed Zibari	2019-05-04	2019-05-04			
Mud Properties Record											
Date / Time	Run No.	Depth (ft)	Mud Type	Density (ppg)	Viscosity (cP)	pH	Fluid Loss (cm3)	Oil / Water	Source	Total Chlorides (ppm)	K+ (%)
2019-04-29 20:34	1	1890.00	Oil Based Mud	9.2	23	N/A	4.8	79/21	Active Pit	40000	0.00
2019-05-01 15:00	1	7636.00	Oil Based Mud	9.2	20	N/A	3.6	76/24	Active Pit	43810	0.00
2019-05-02 15:00	1	12451.00	Oil Based Mud	9.2	19	N/A	4.0	76/24	Active Pit	40952	0.00
2019-05-03 15:00	1	15768.00	Oil Based Mud	9.3	18	N/A	4.0	76/24	Active Pit	40952	0.00
Mud Resistivity Record											
Date / Time	Run No.	Depth (ft)	Surface Temp (degF)	Surface			BHCT (degF)	Downhole			
				Rm (ohm.m)	Rmf (ohm.m)	Rmc (ohm.m)		Rm @ BHCT (ohm.m)	Rmf @ BHCT (ohm.m)	Rmc @ BHCT (ohm.m)	
2019-05-02 09:00	1	1890.00	75.0	100.000	N/A	N/A	105.0	100.000	N/A	N/A	
2019-05-03 19:01	1	7636.00	74.0	100.000	N/A	N/A	175.0	100.000	N/A	N/A	
Equipment and Service Data											
Run No.	Tool		Serial Number		Measurement		Sensor Offset (ft)	Bit Offset (ft)	Max O.D. (in)	Min I.D. (in)	
1	EvoOne		14765381		Gamma (single)		8.18	50.61	6.500	0.000	
1	EvoOne		14765381		Directional (mag)		9.37	51.80	6.500	0.000	
1	OnTrak		11768343		Pressure		1.20	11256.02	6.750	0.000	
1	OnTrak		11768343		Gamma (double)		2.09	11256.91	6.750	0.000	
1	OnTrak		11768343		Resistivity (4tx)		6.13	11260.95	6.750	0.000	
1	OnTrak		11768343		Directional (mag)		11.92	11266.74	6.750	0.000	
Service and Tool Mnemonics											
Mnemonic	Name		Description								
MWD	EvoOne - Dir Gamma		EvoOne								
OTK	OnTrak		Sensor Sub (Inc, Azi, Temp, Azimuthal GR, Res, AP, VSS), OnTrak Platform								
BCPM	BCPM		Bi-Directional Communication and Power Module, OnTrak Platform								
Comments											
1 Depth measurements were obtained from a depth control system not supplied or operated by Baker Hughes. Due to lack of control by Baker Hughes logging engineers, depth calibrations and measurements could not be independently verified.											
2 Baker Hughes run 1 utilized a 6 3/4 inch OnTrak service (Multiple Propagation Resistivity and Gamma Ray) behind a 7 7/8 inch steerable assembly to perform a MAD (measurement after drilling) pass from 1890 to 18195 feet MD (1889 to 7621 feet TVD). The data collected during this run was ream logged up to 48 hours after being drilled and presented independent of the drilled log.											
Remarks											
Number	Depth (ft)	Hole Section (in)	Run No.	Remark							
1	2195.00	7.875	1	The interval from 2186 to 2202 feet MD (2185 to 2201 TVD) was not logged due to loss of Pason/WITS connection.							
2	3615.00	7.875	1	The interval from 3607 to 3652 feet MD (3606 to 3651 TVD) was not logged due to loss of Pason/WITS connection.							
3	6925.00	7.875	1	The interval from 6938 to 18195 feet MD (6937 to 7621 feet TVD) was not logged due to sensor to bit offset at TD.							
Curve Mnemonics											
Presented Curves			Description								Units
CACLM			Conductivity Attenuation - Corrected - 400kHz								mmho/m

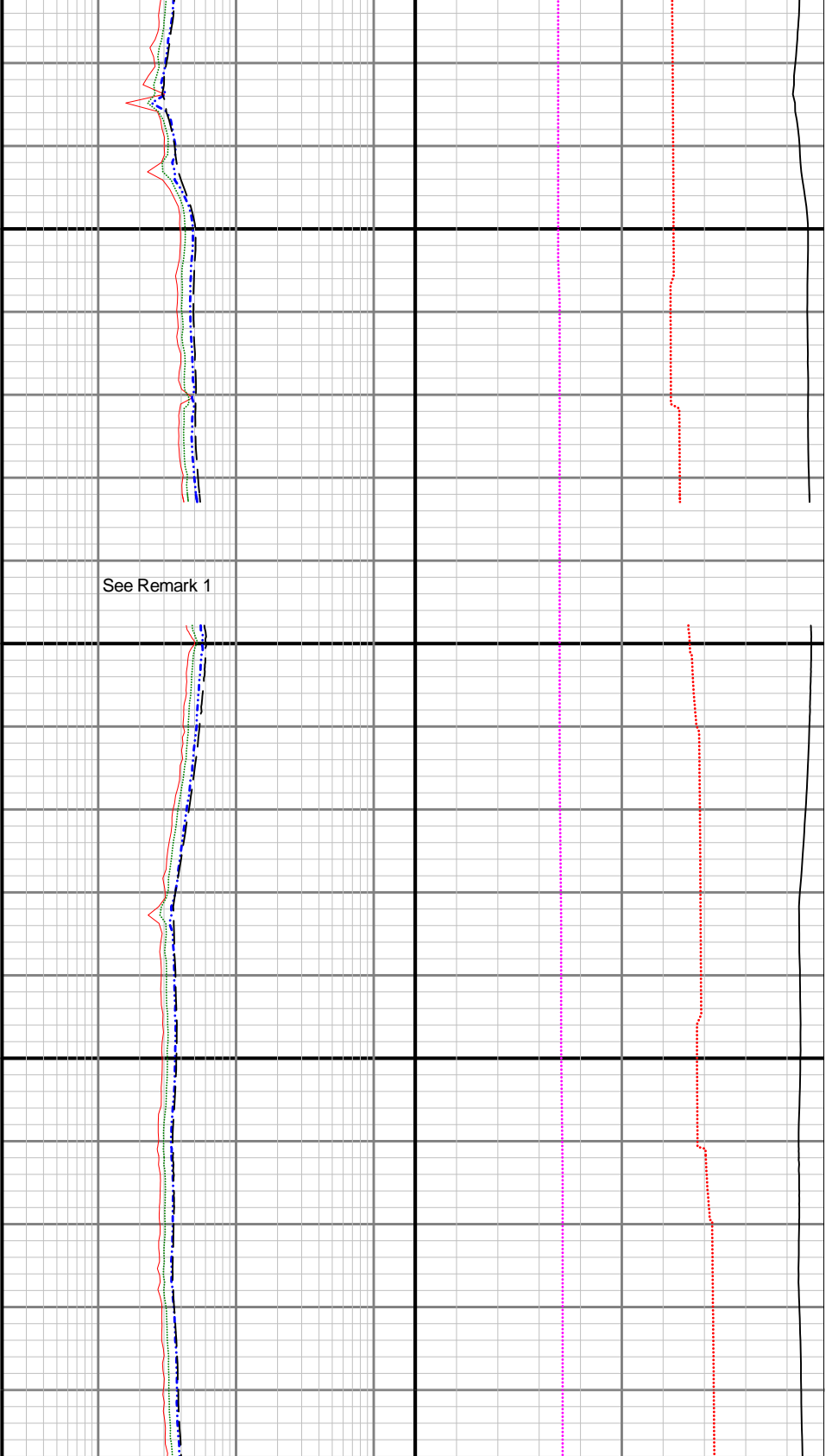
RACHM	Resistivity Attenuation - Corrected - 2MHz	ohm.m
RACLM	Resistivity Attenuation - Corrected - 400kHz	ohm.m
RPCHM	Resistivity Phase - Corrected - 2MHz	ohm.m
RPCLM	Resistivity Phase - Corrected - 400kHz	ohm.m
RPTHM	Resistivity Time Since Drilled	min
TCDM	Downhole Temperature	degF
ROPA	Depth Averaged ROP 3 ft Average	ft/h
TVD	True Vertical Depth	ft
GRAM	Gamma Ray - Apparent - Memory 0.5 ft Average	API
GRIM	Gamma Ray - Data Point Indicator - Memory	unitless

 	Company	Anadarko				
	Well	Buddy 7-13HZ				
	Interval	Date From:	2019-04-30 18:00	Interval Drilled: (ft)	1890.00 - 18195.00	
		Date To:	2019-05-04 22:28	Interval Logged: (ft)	1890.00 - 18144.00	
		Created	2019-05-05 09:46:00			

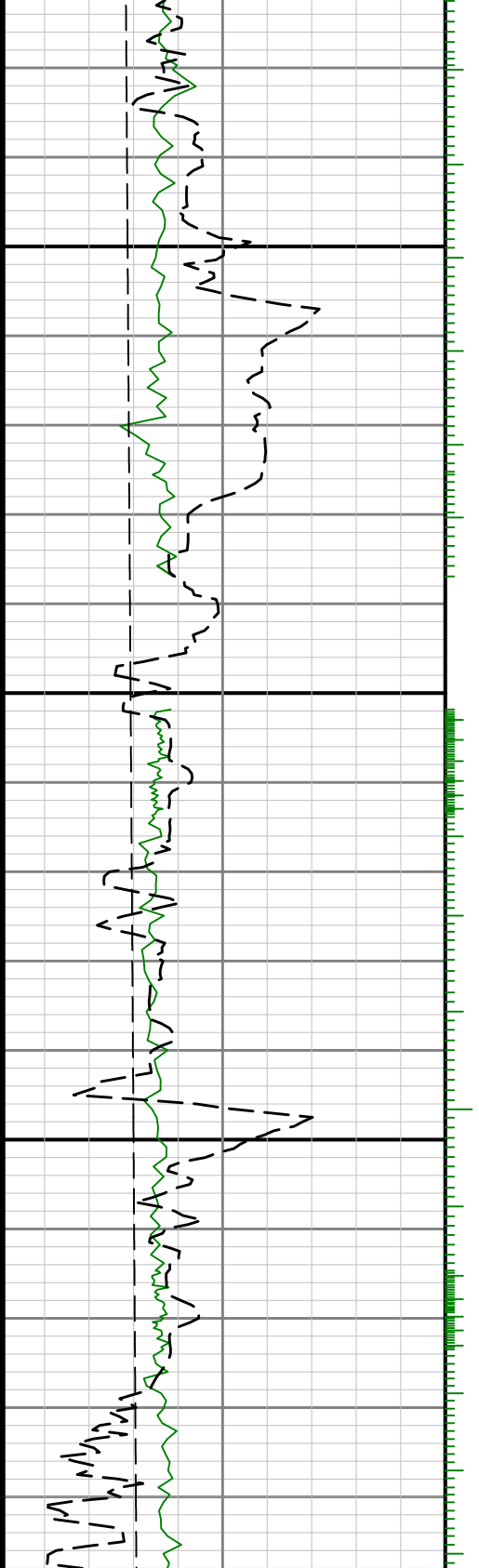
Gamma Ray - Apparent 0.5 ft Average [GRAM]	MD 1:240 feet	Resistivity Phase - Corrected - 2MHz [RPCHM]	Conductivity Attenuation - Corrected - 400kHz [CACLM]
0 300		0.2 200	4000 0
API		ohm.m	mmho/m
Depth Averaged ROP 3 ft Average [ROPA]		Resistivity Phase - Corrected - 400kHz [RPCLM]	Downhole Temperature [TCDM]
1200 0		0.2 200	0 250
ft/h		ohm.m	degF
True Vertical Depth [TVD]		Resistivity Attenuation - Corrected - 2MHz [RACHM]	Resistivity Time Since Drilled [RPTHM]
0 7500		0.2 200	0 600
ft		ohm.m	min
		Resistivity Attenuation - Corrected - 400kHz [RACLM]	
		0.2 200	
		ohm.m	

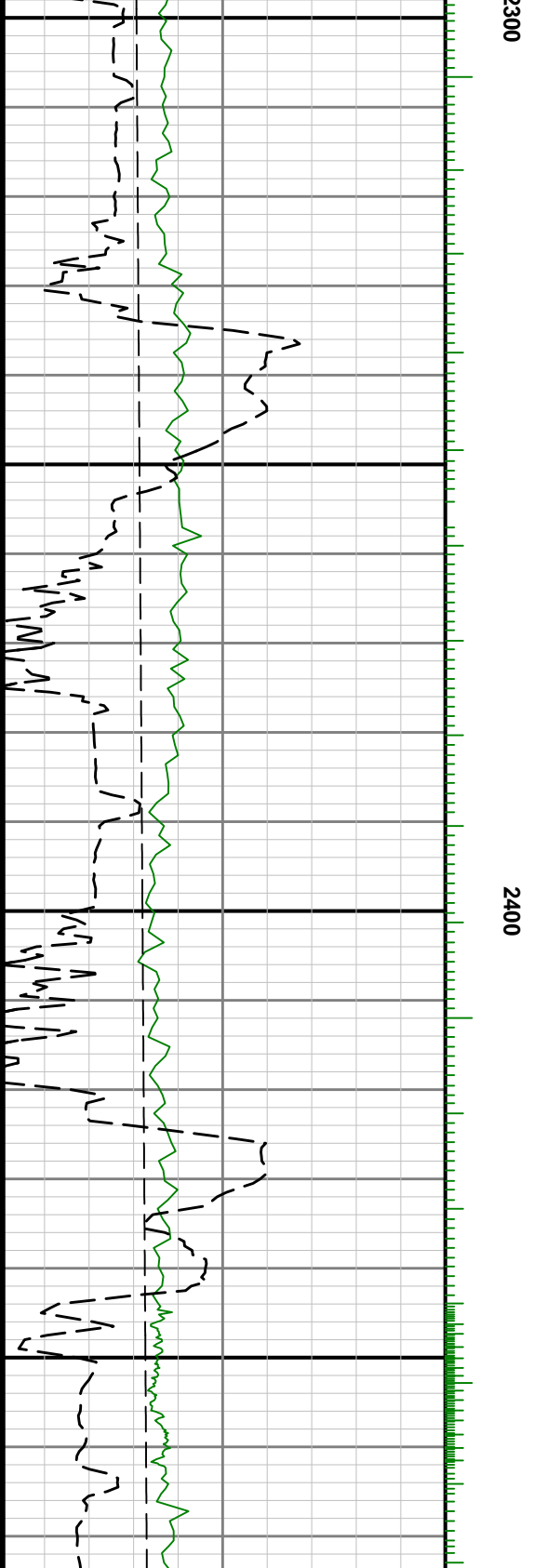
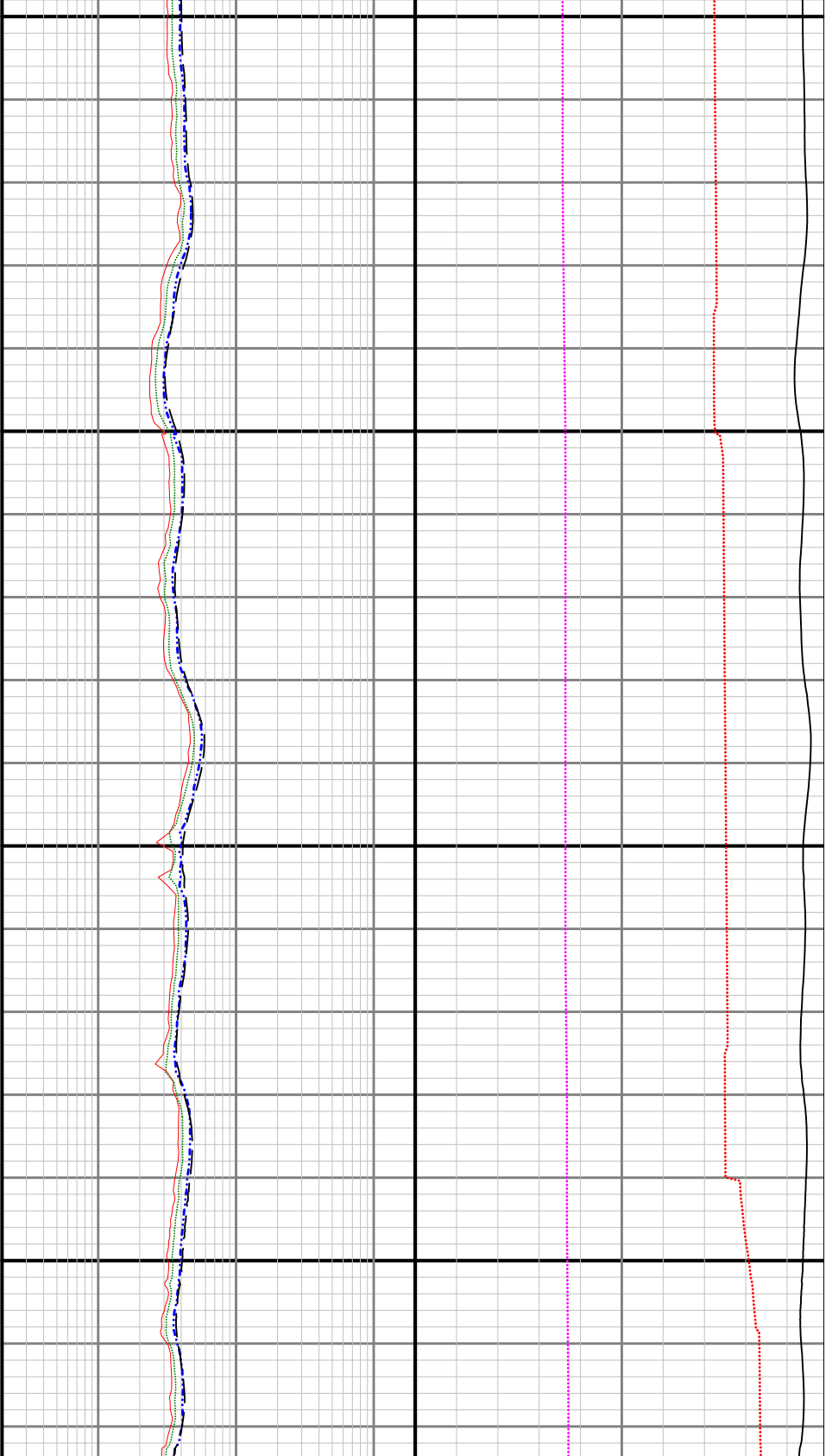


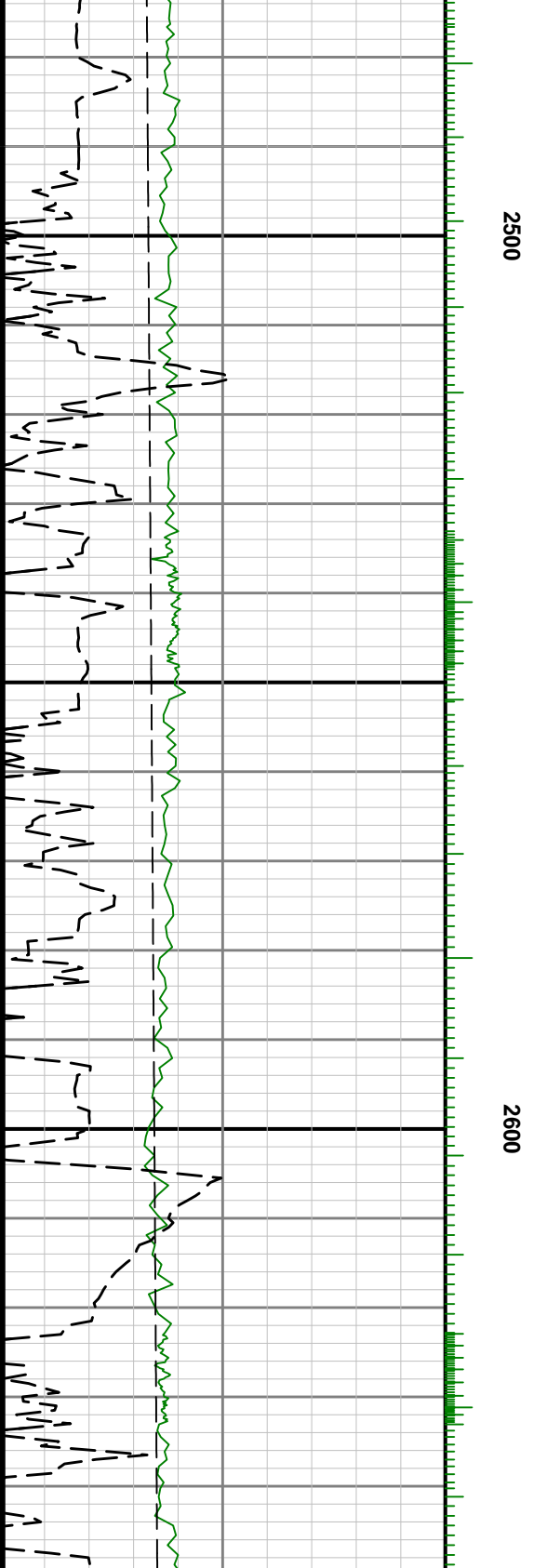


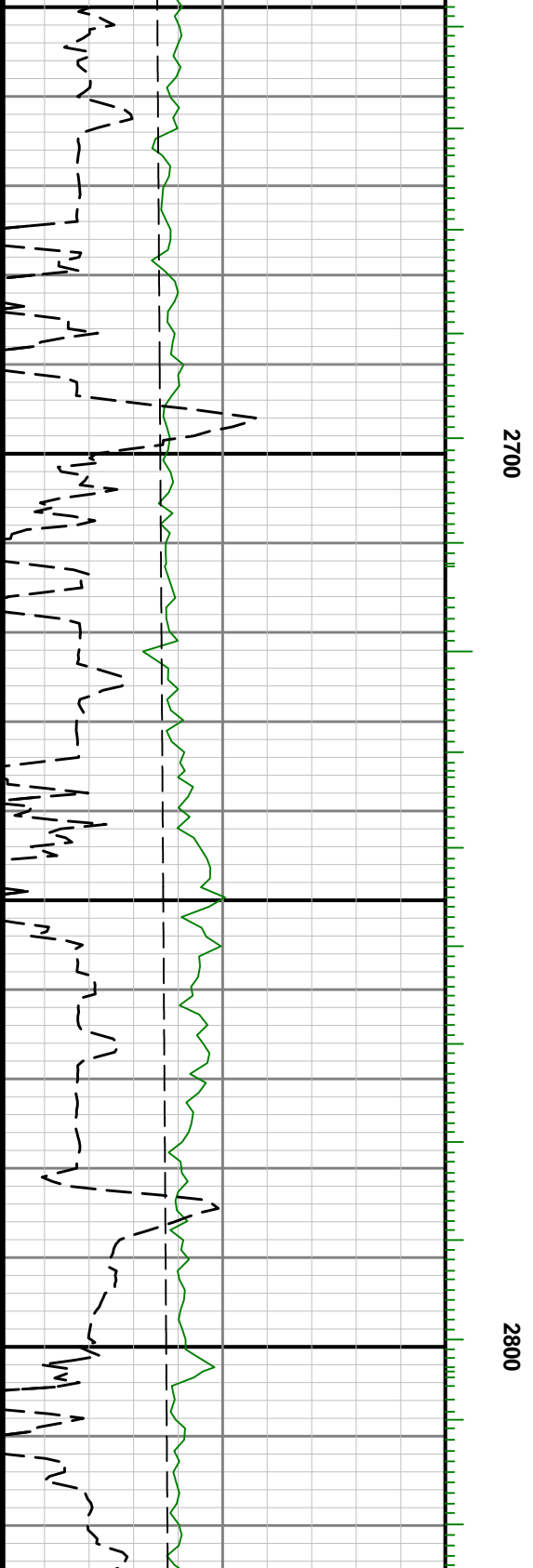


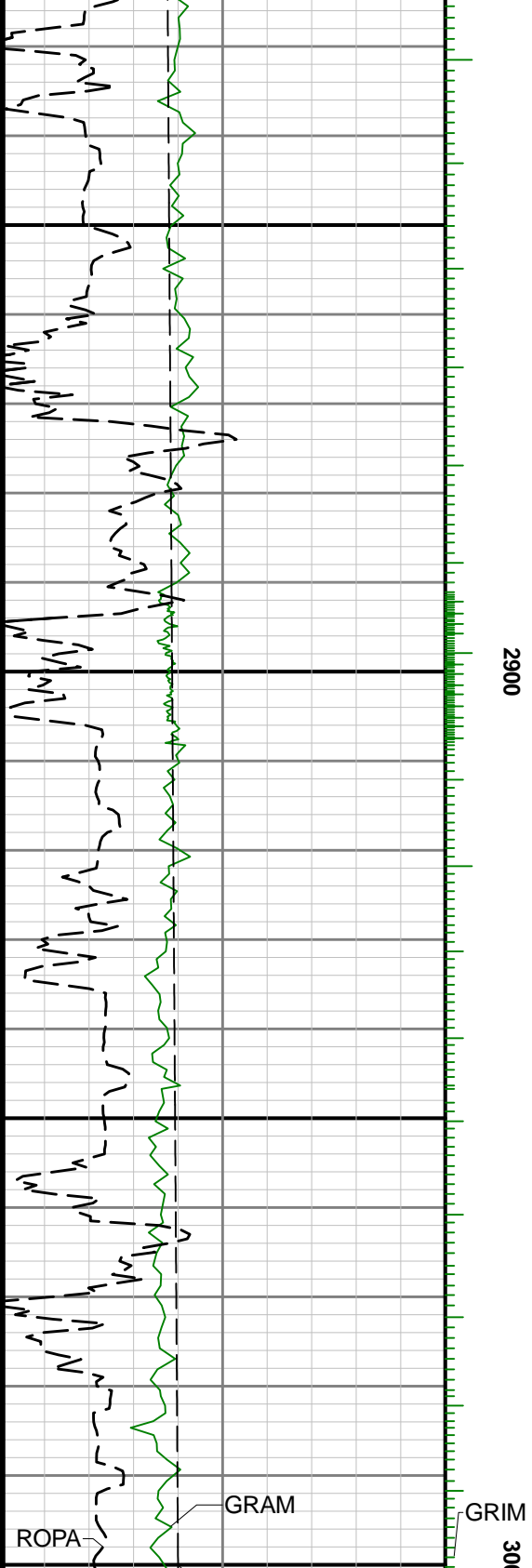
2200

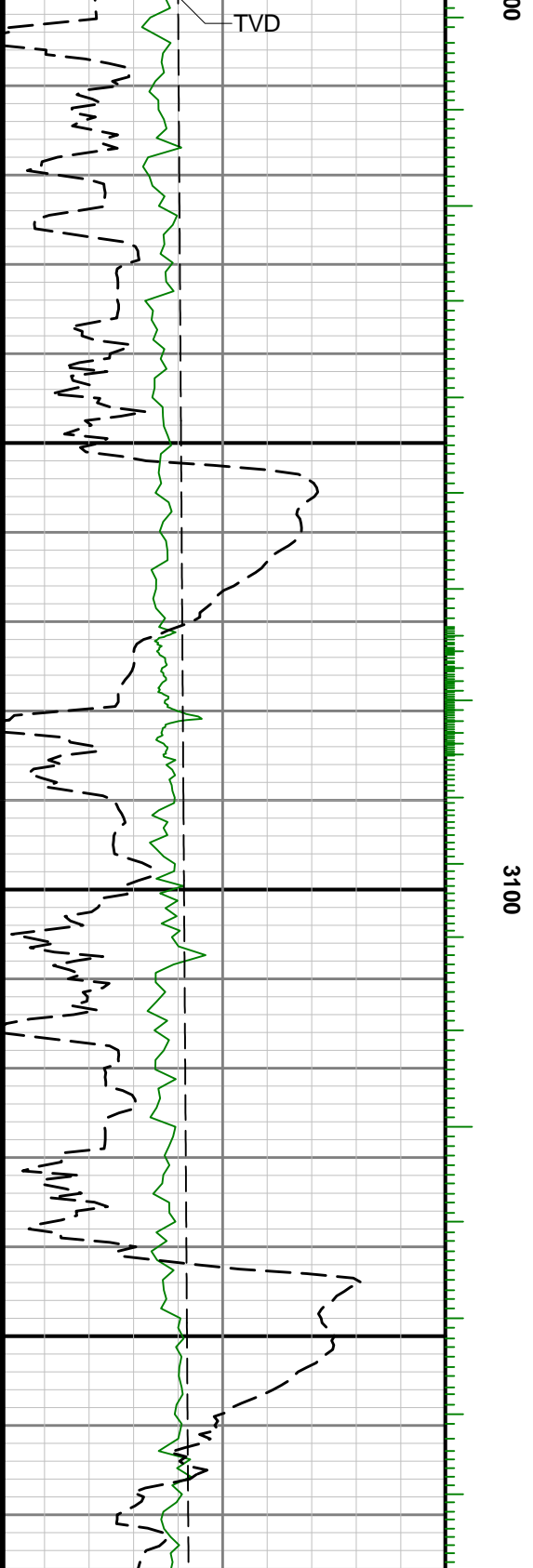


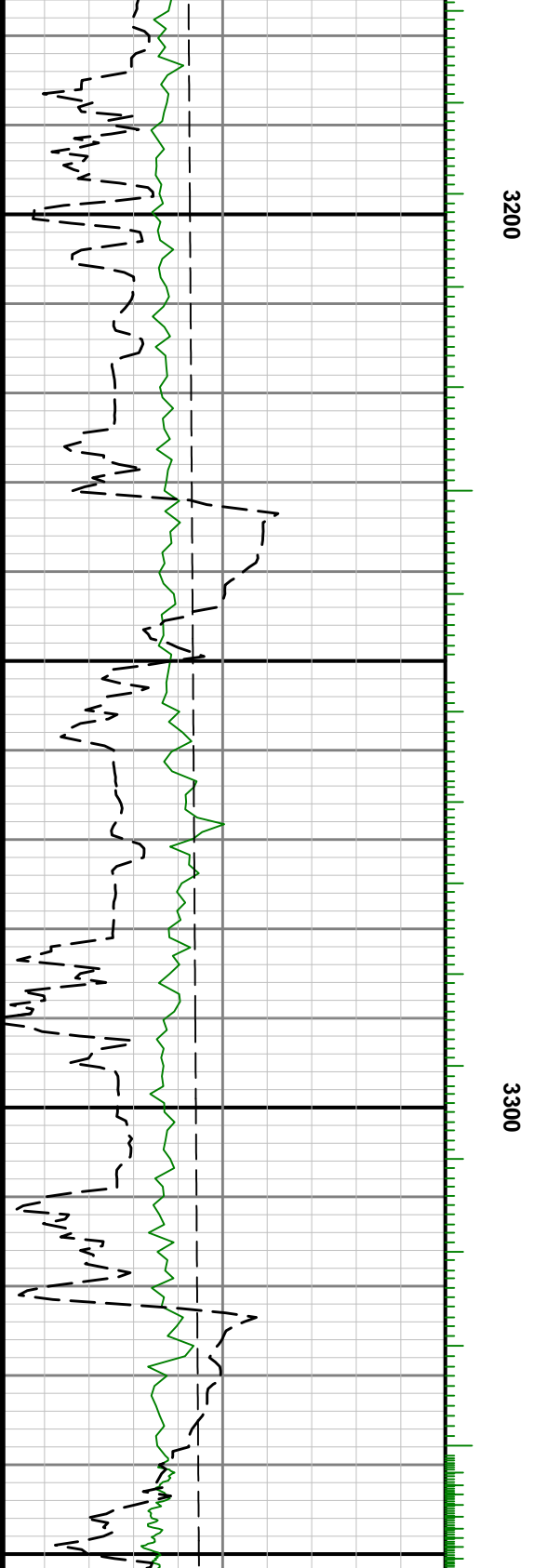


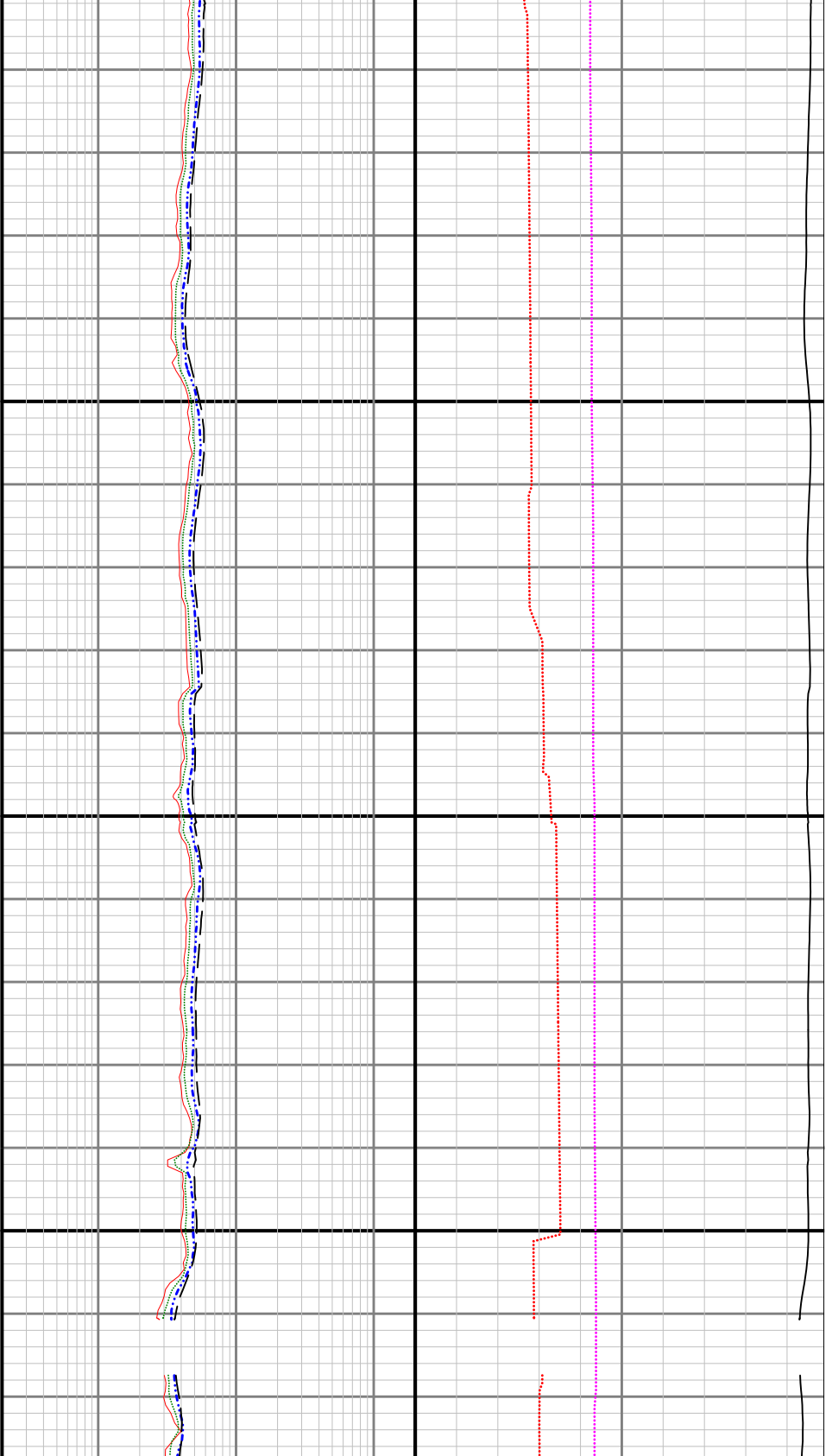






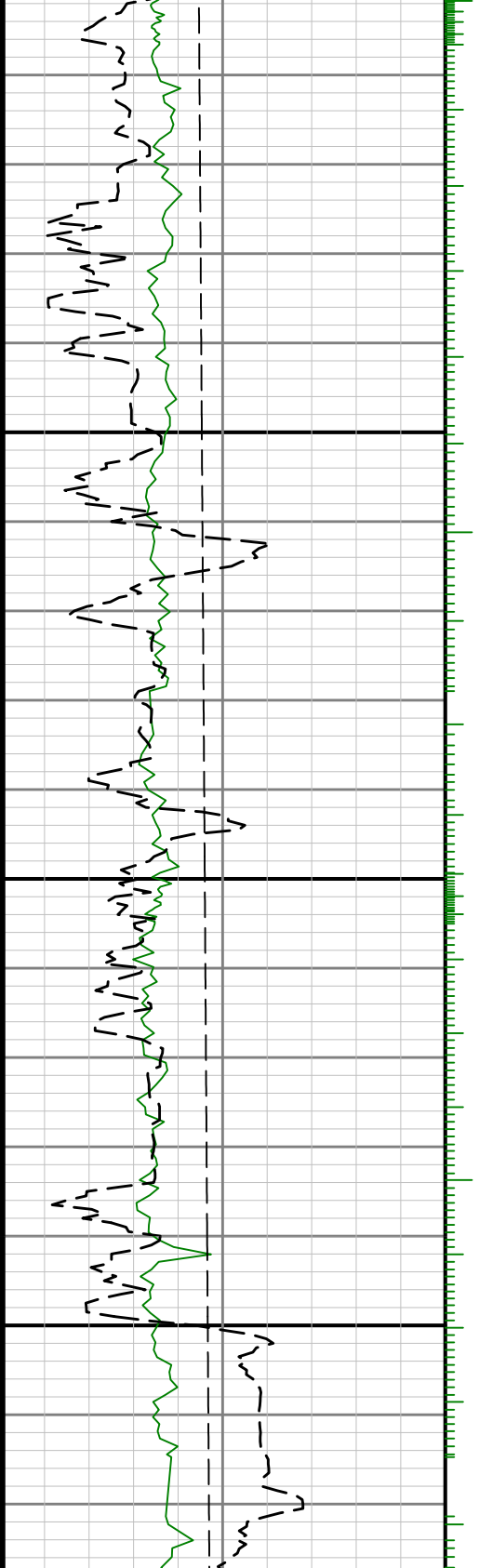


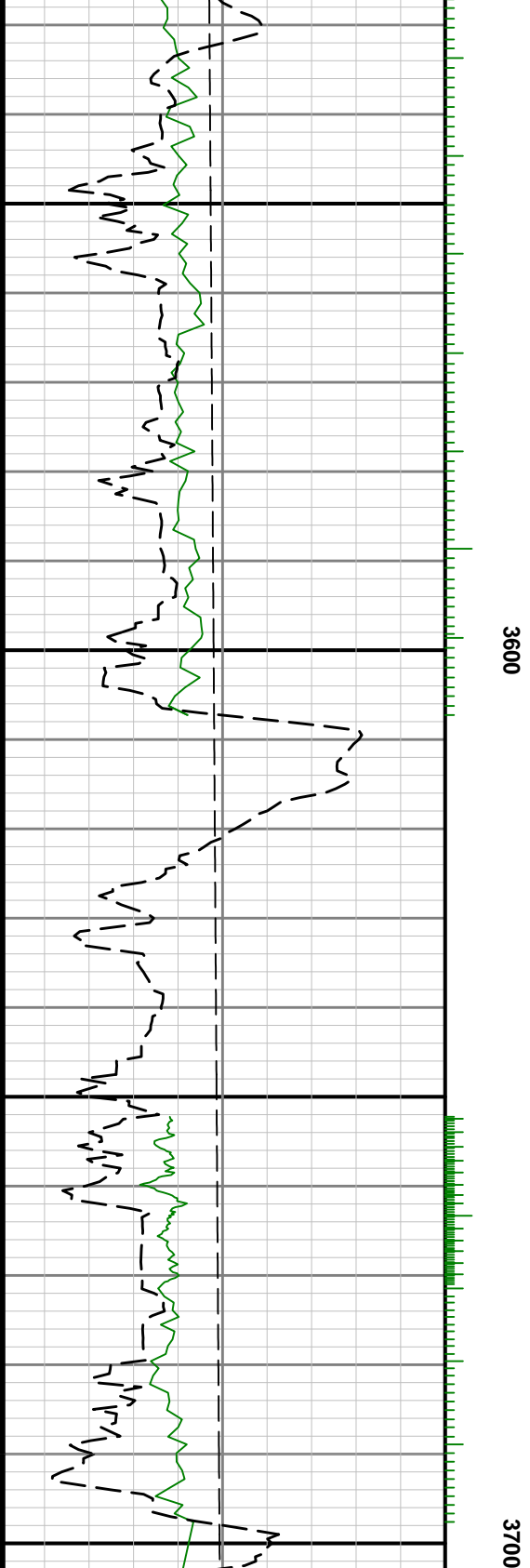
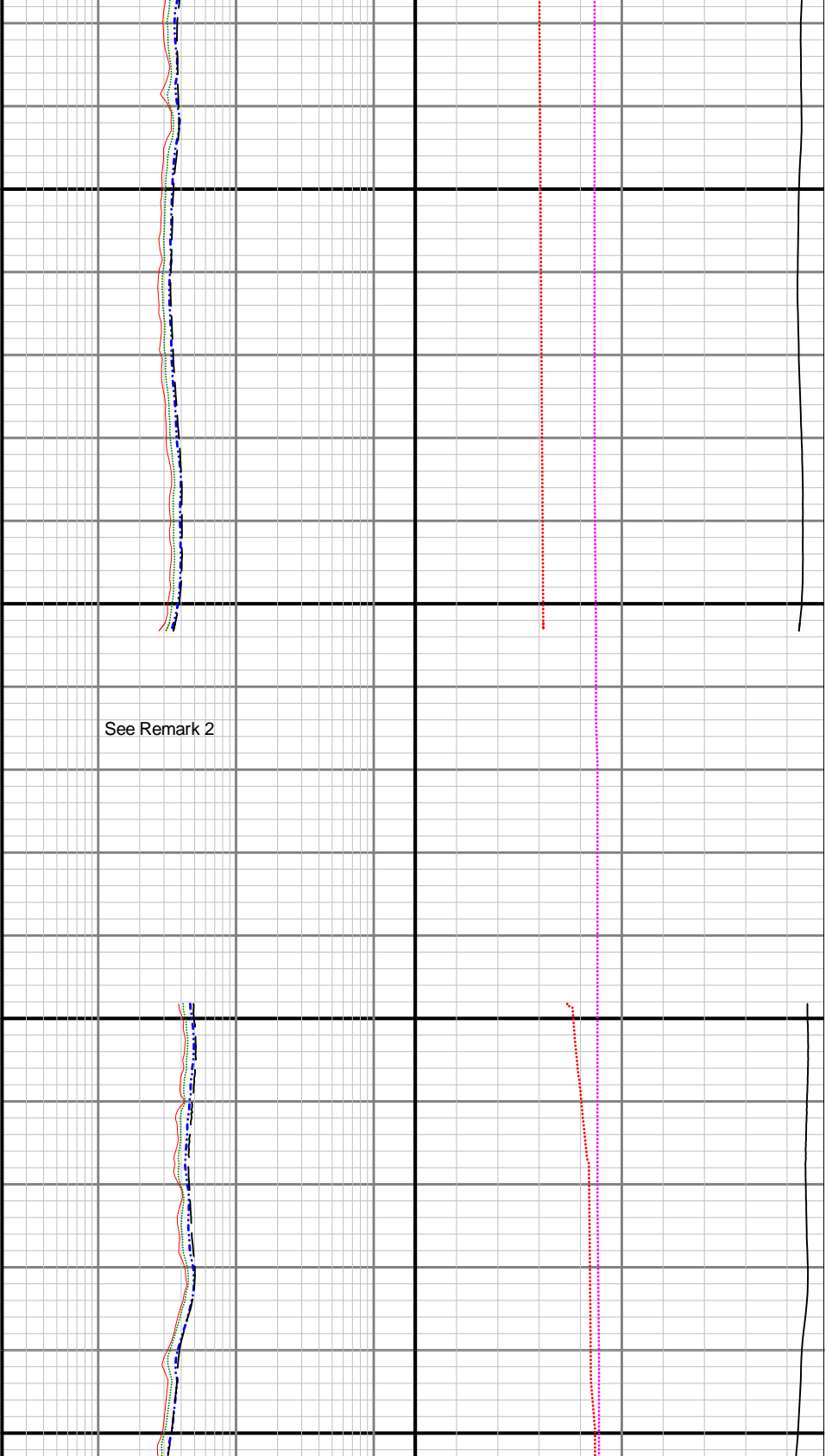




3400

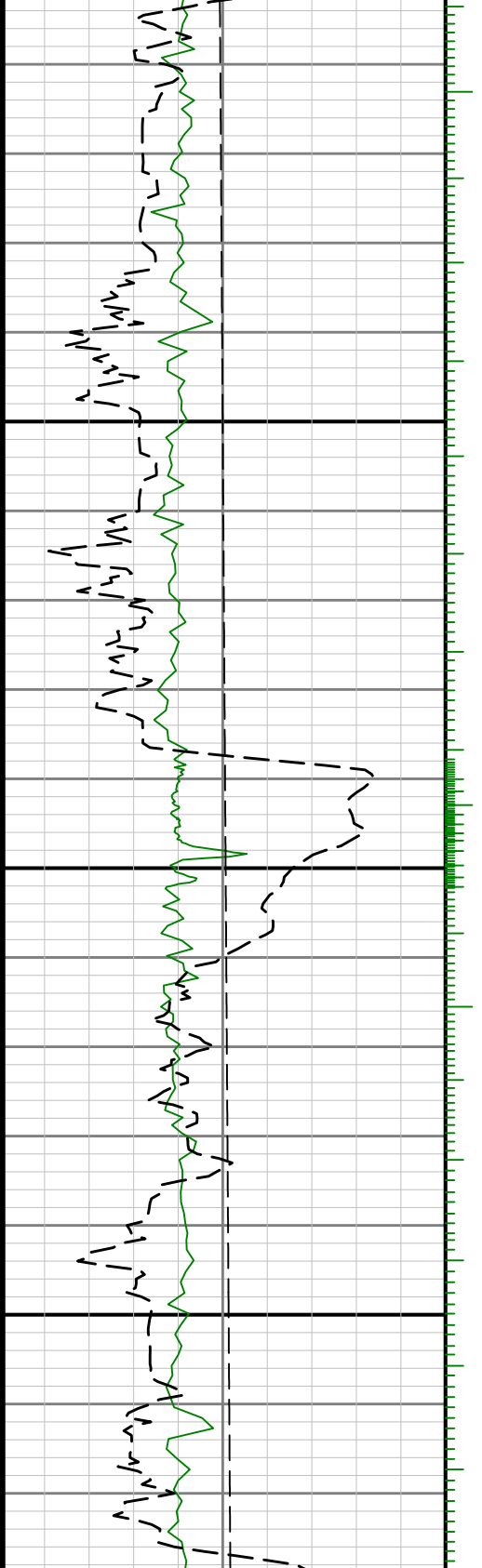
3500

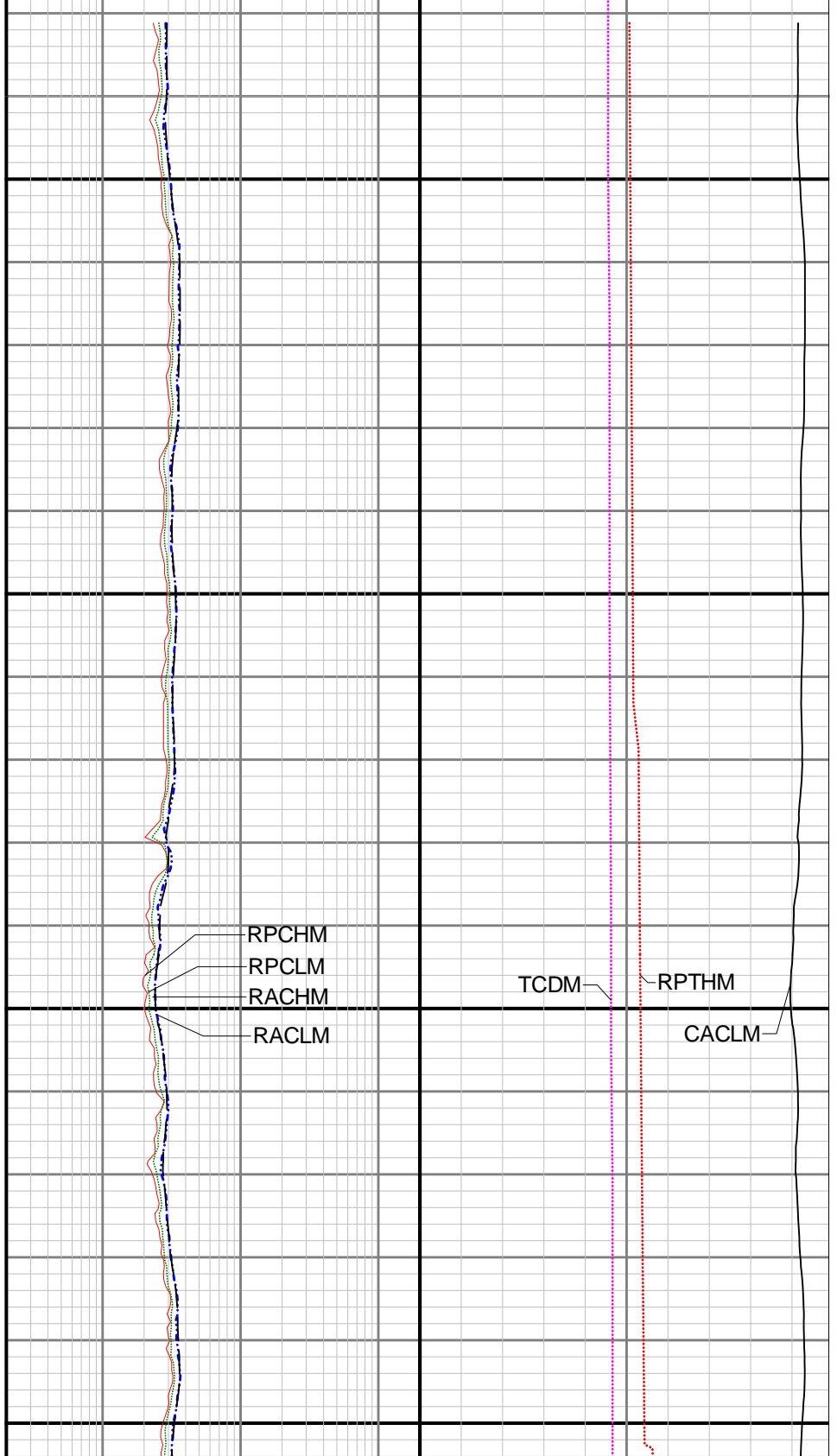
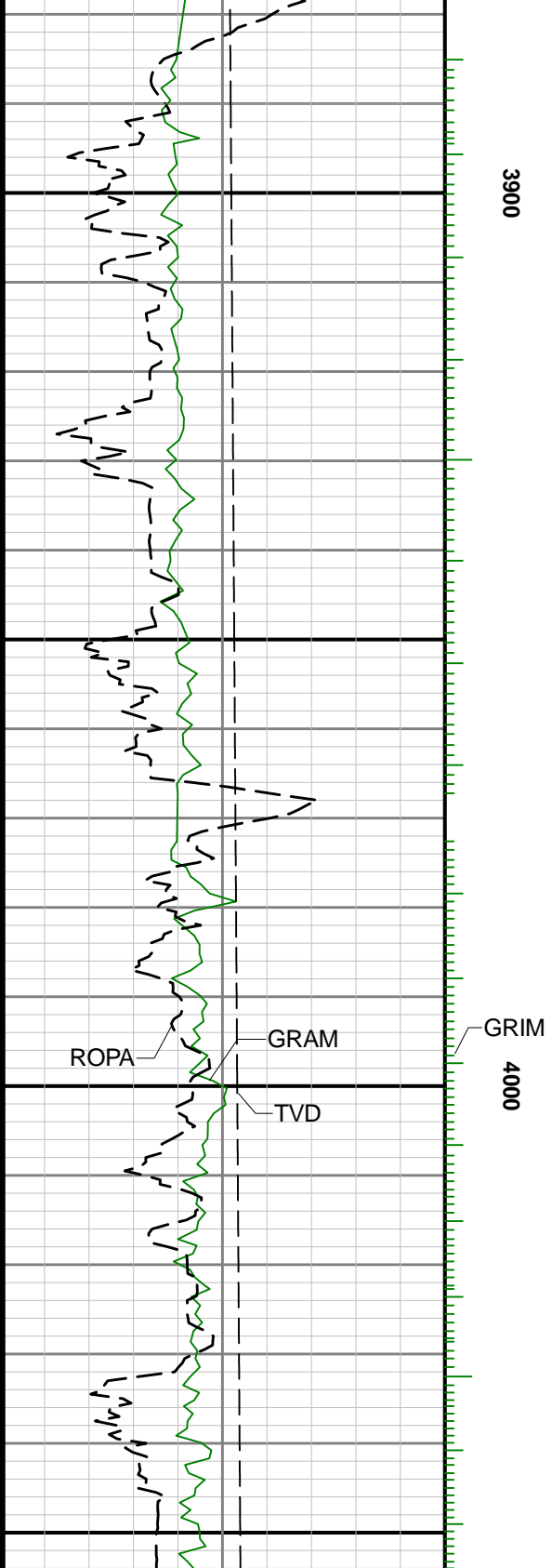


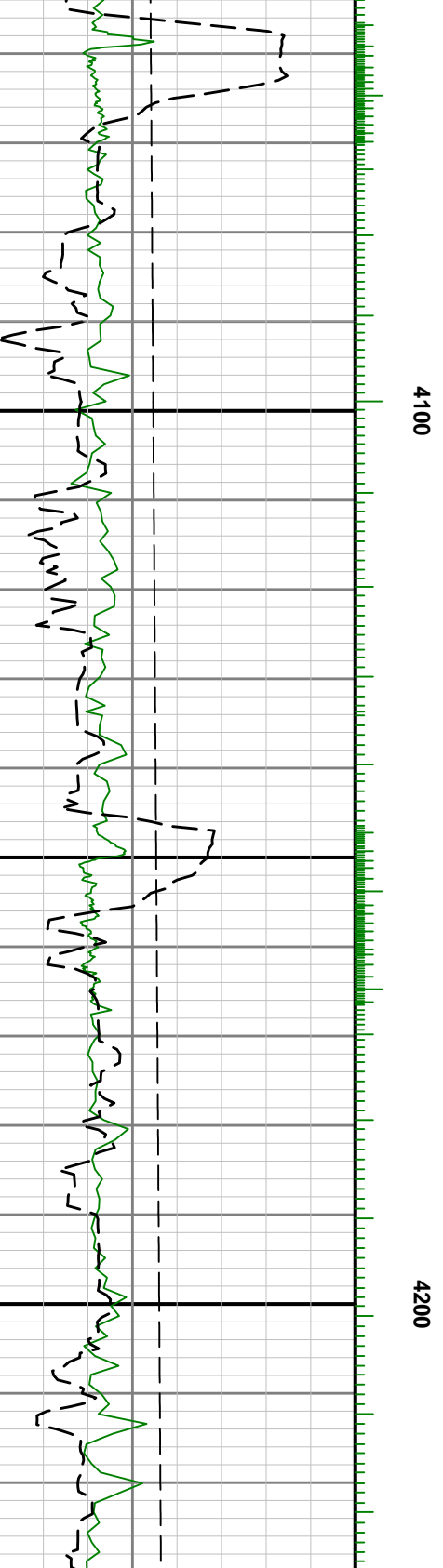
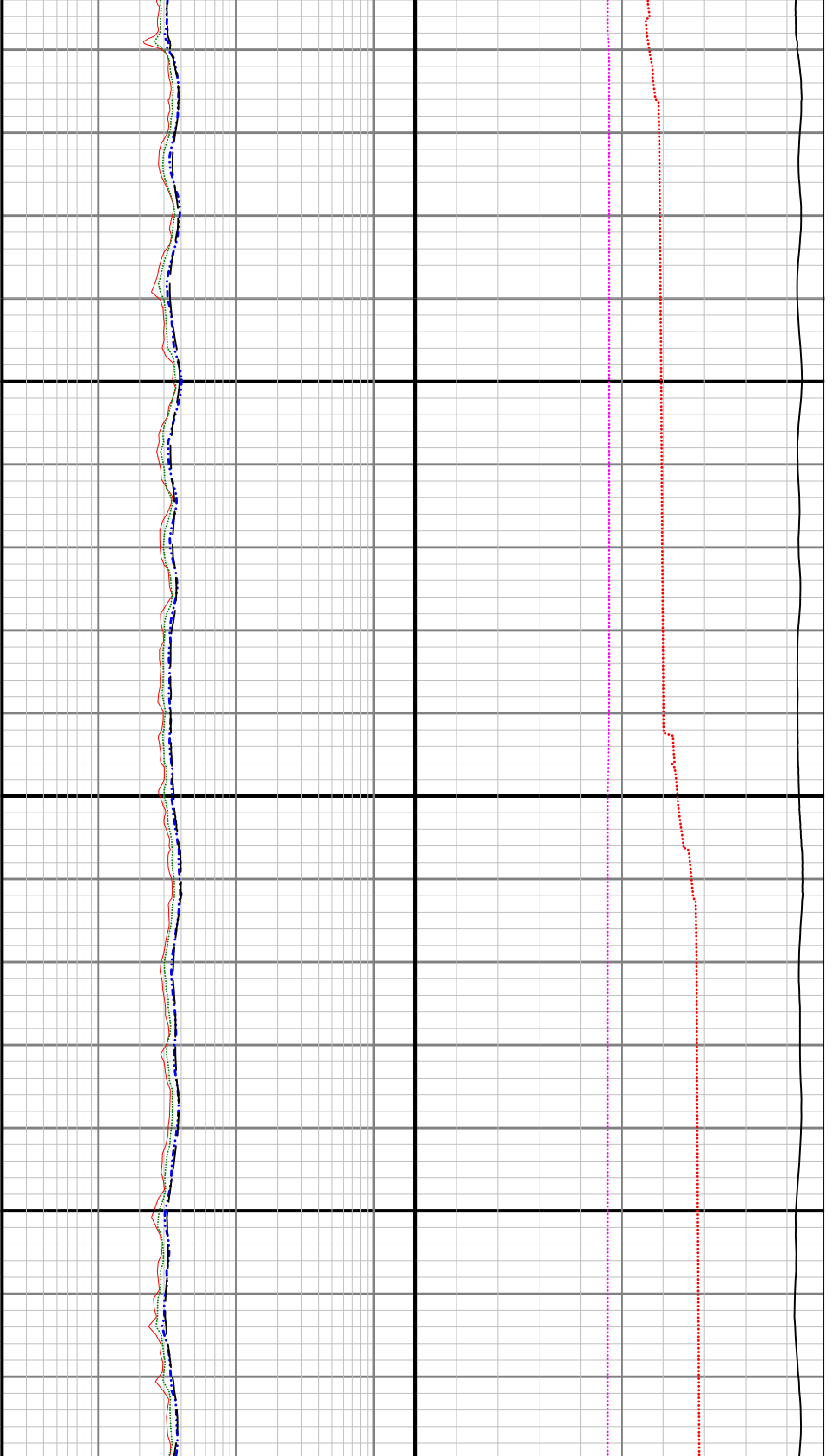


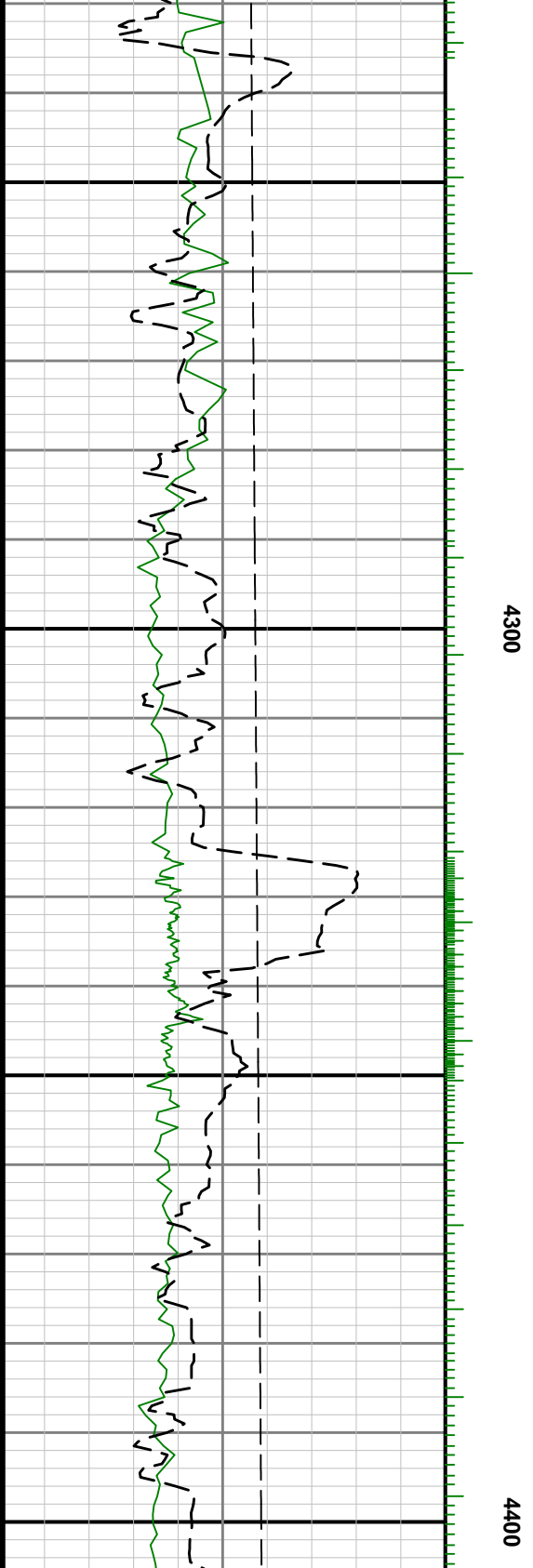


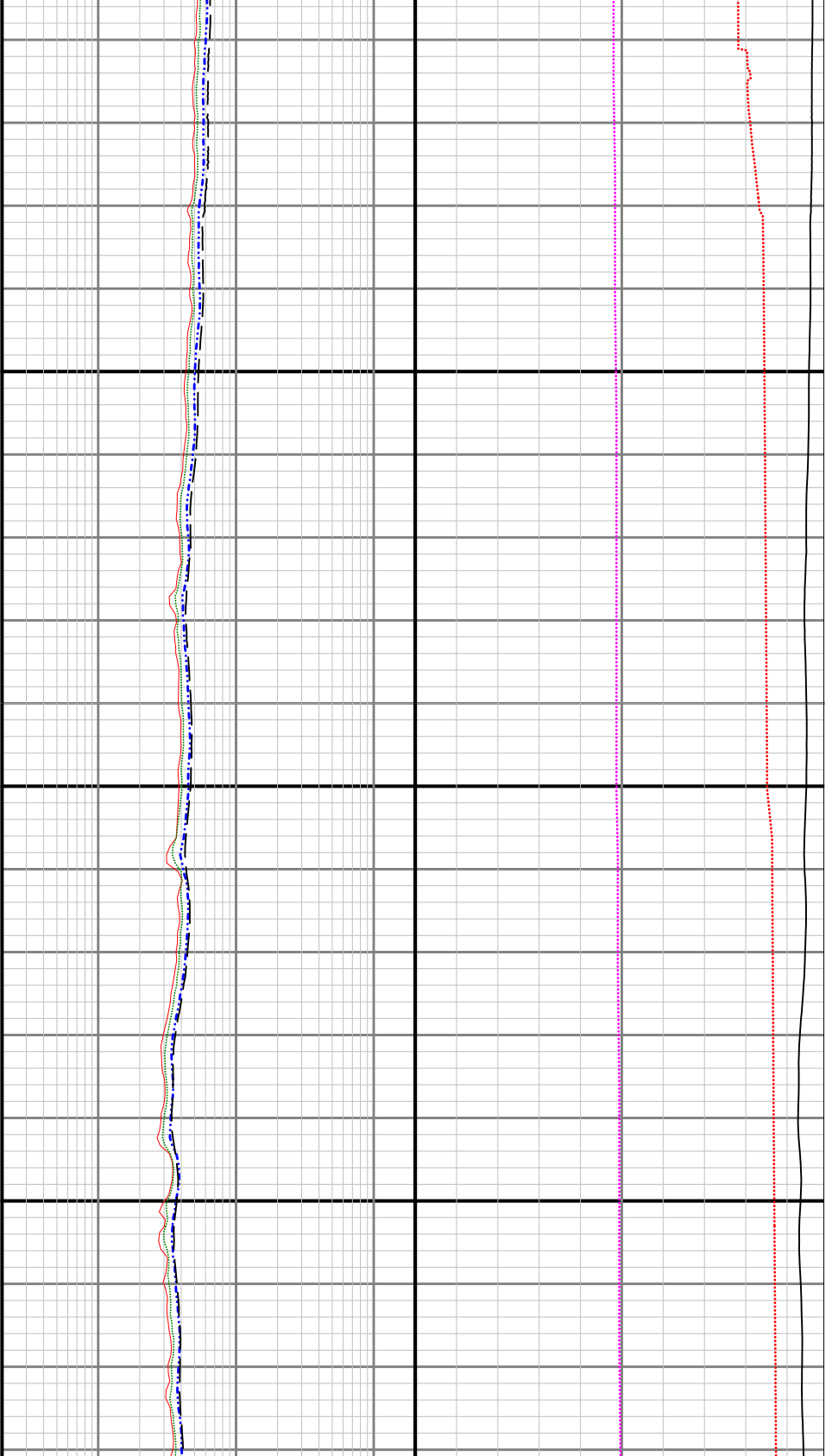
3800



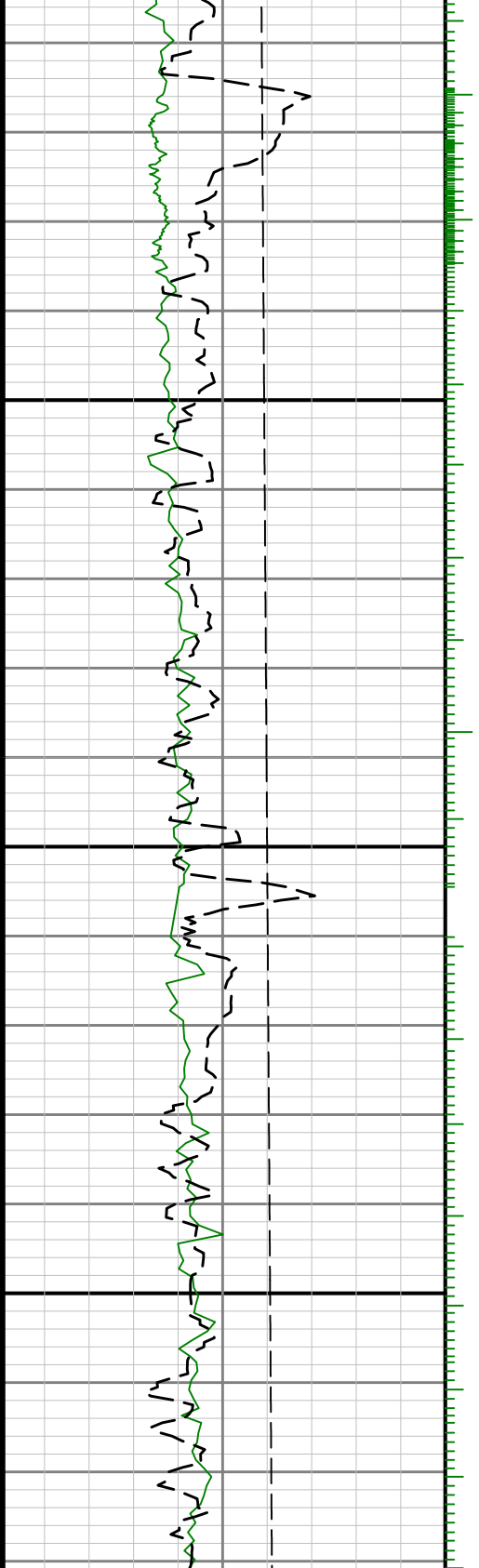


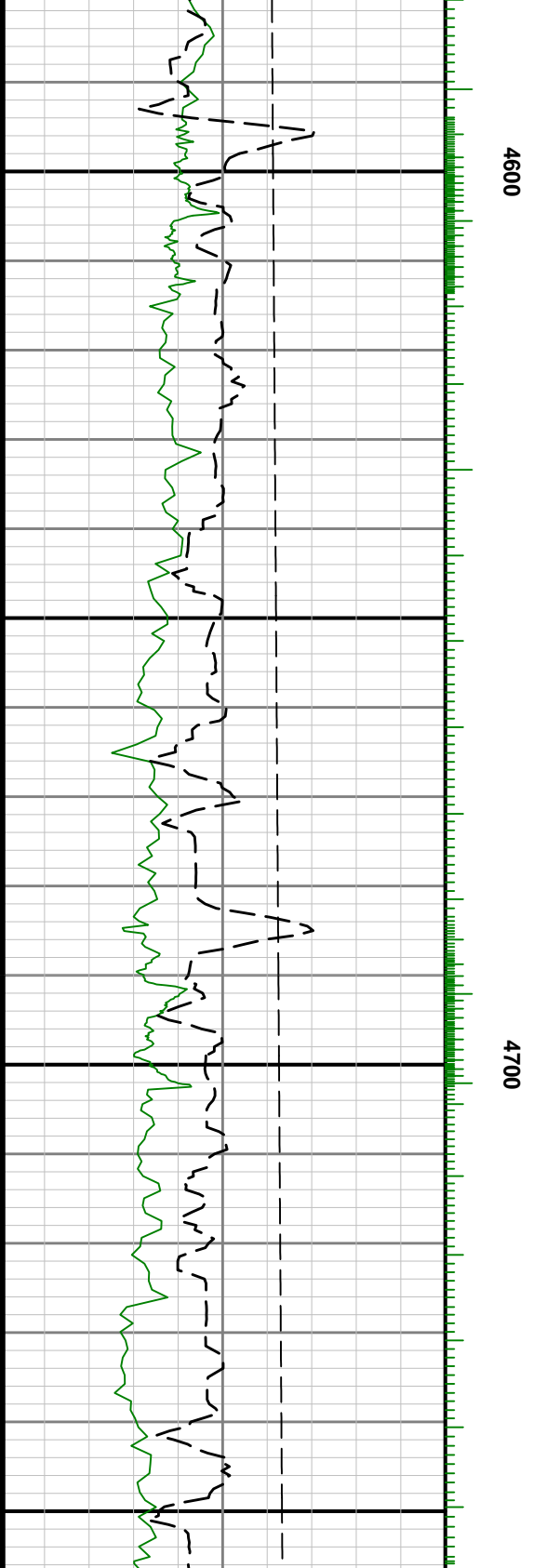
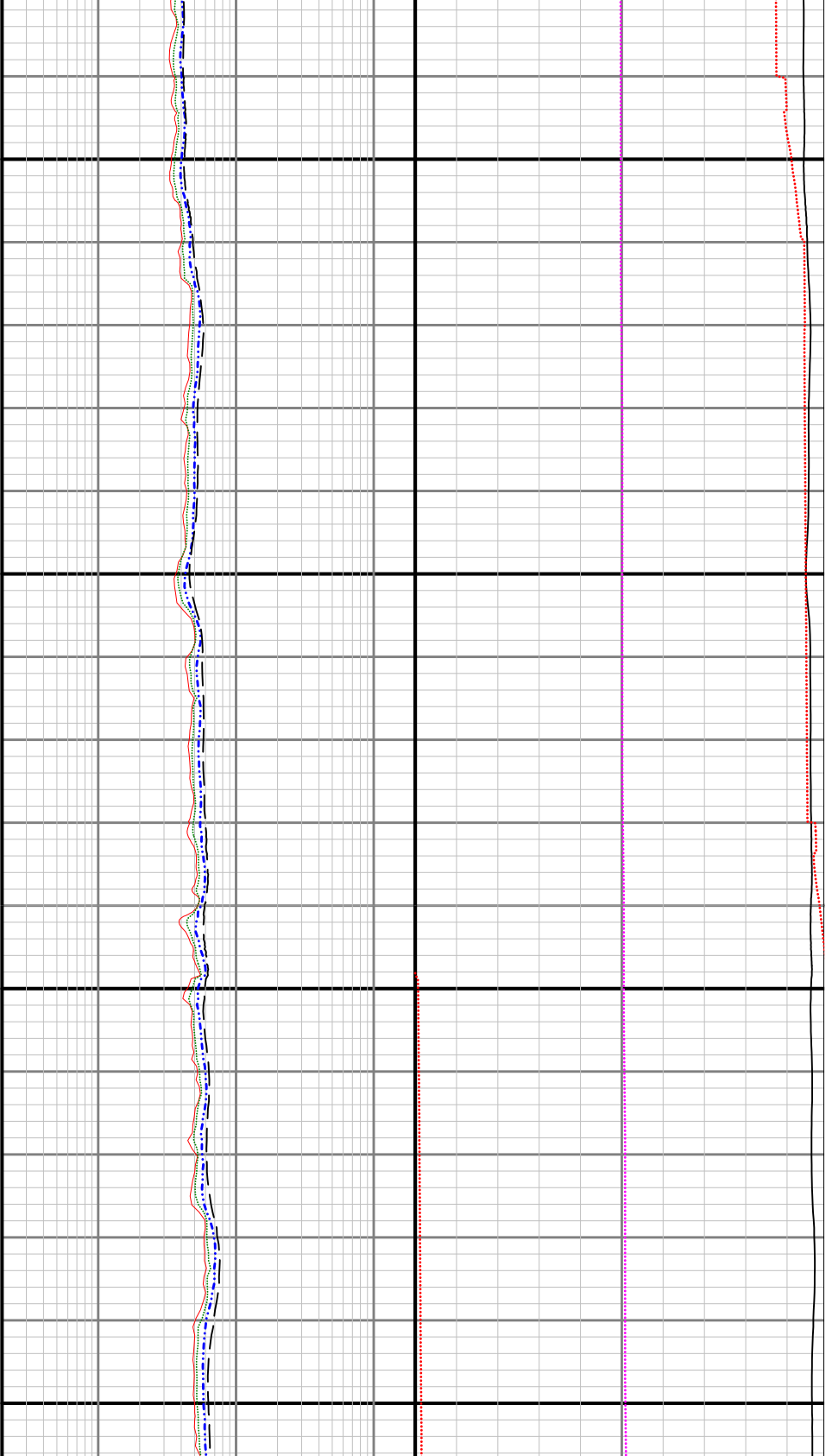


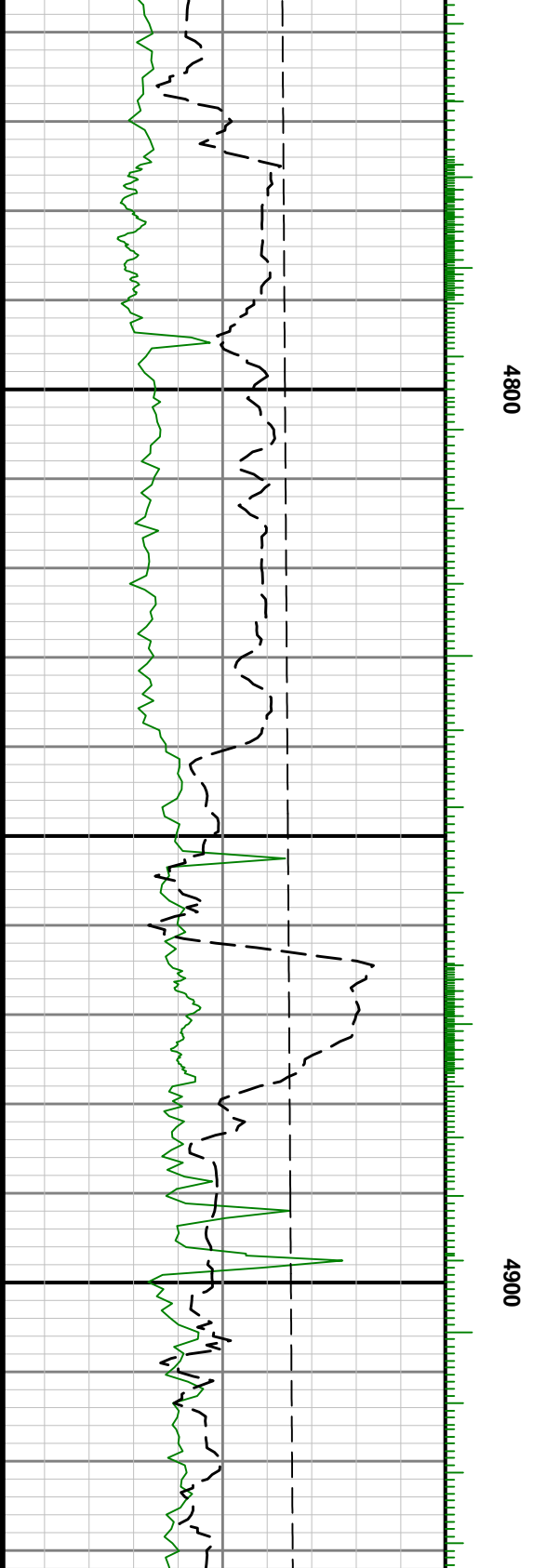


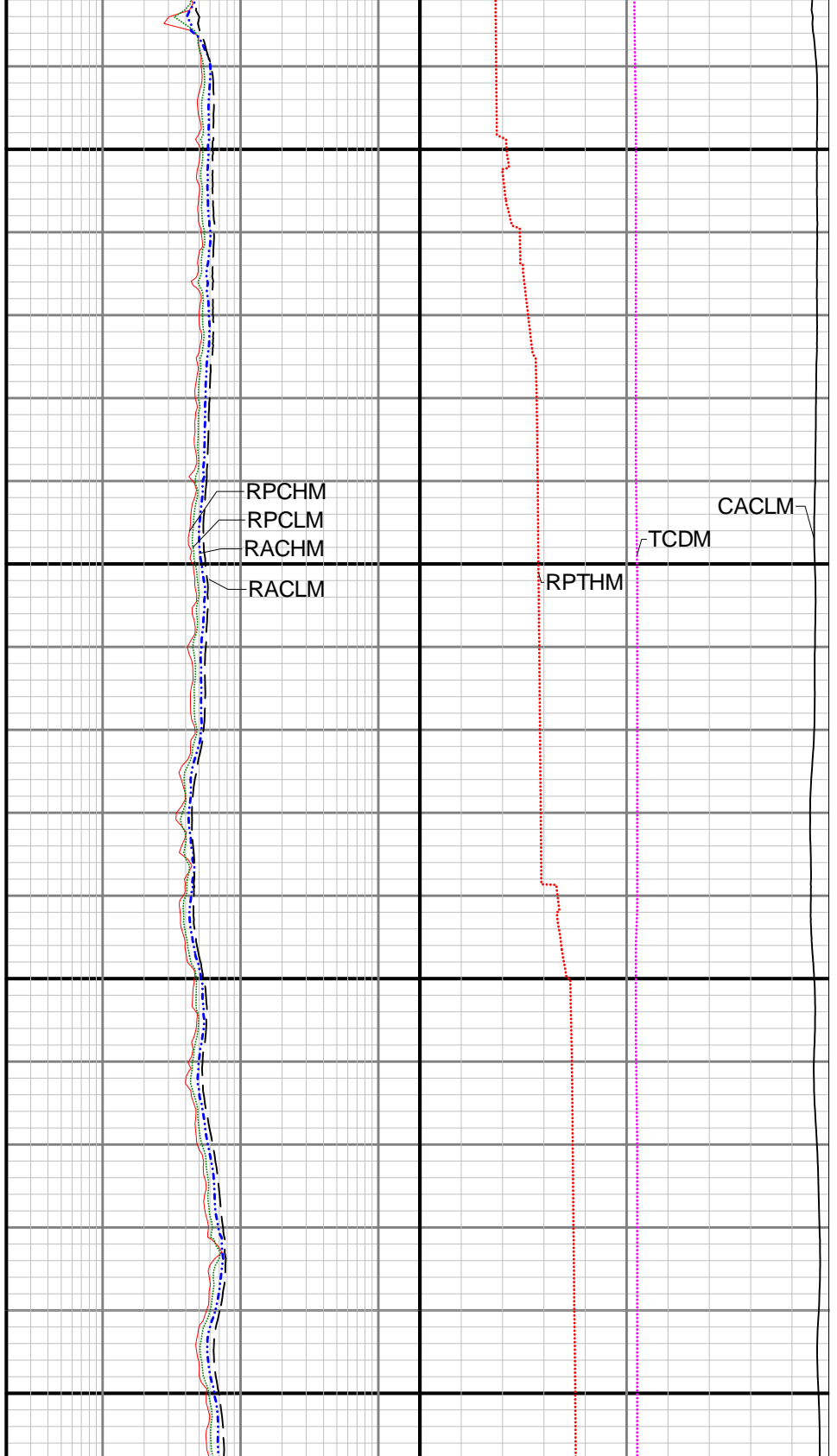
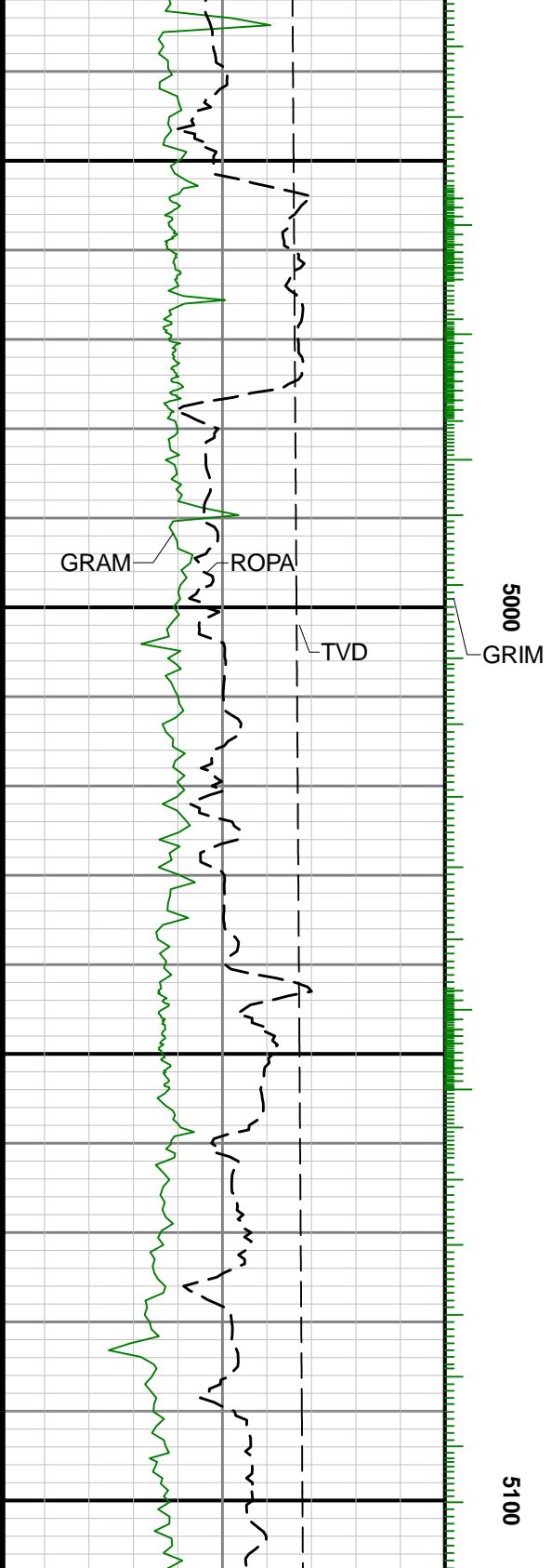


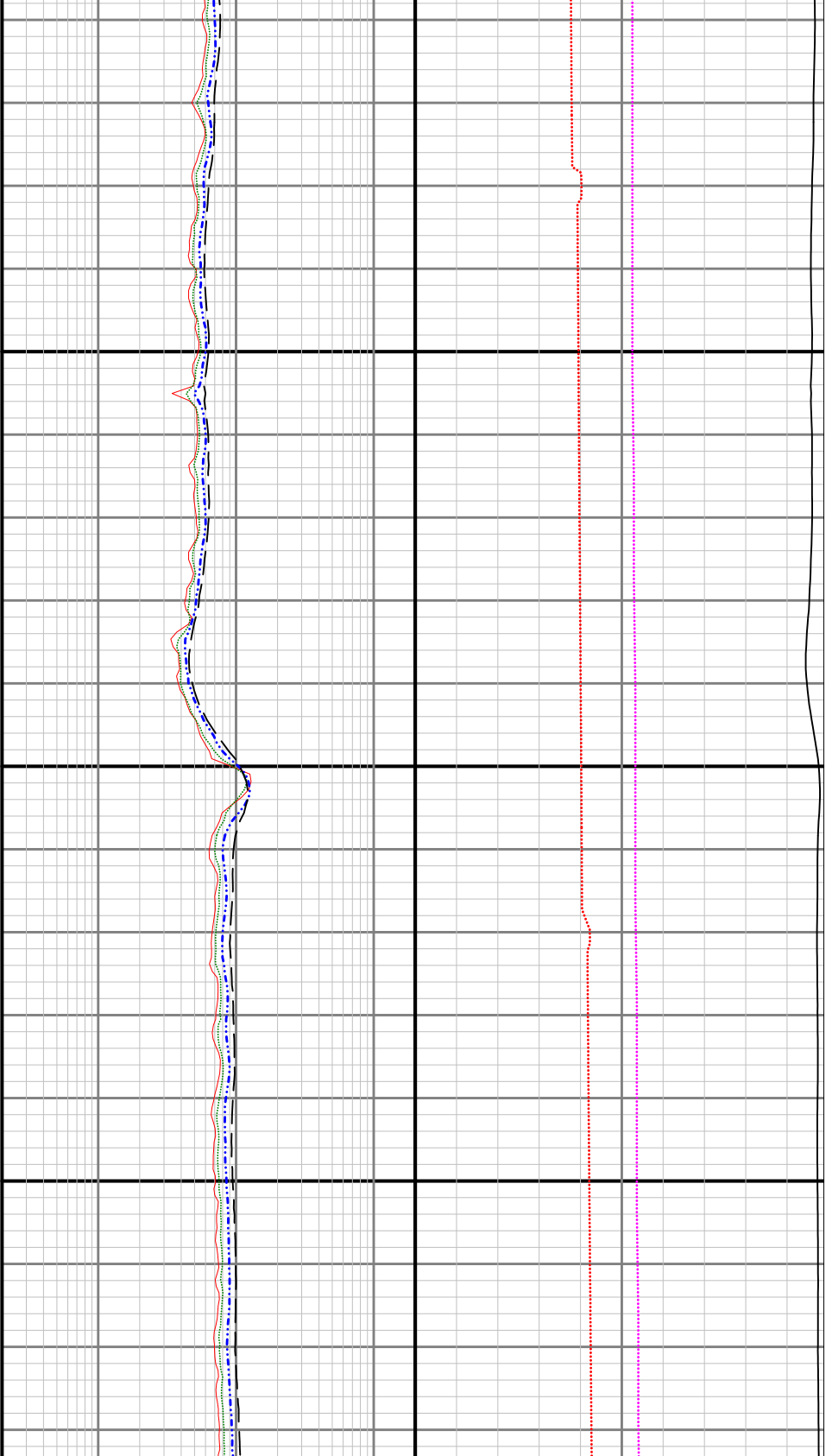
4500



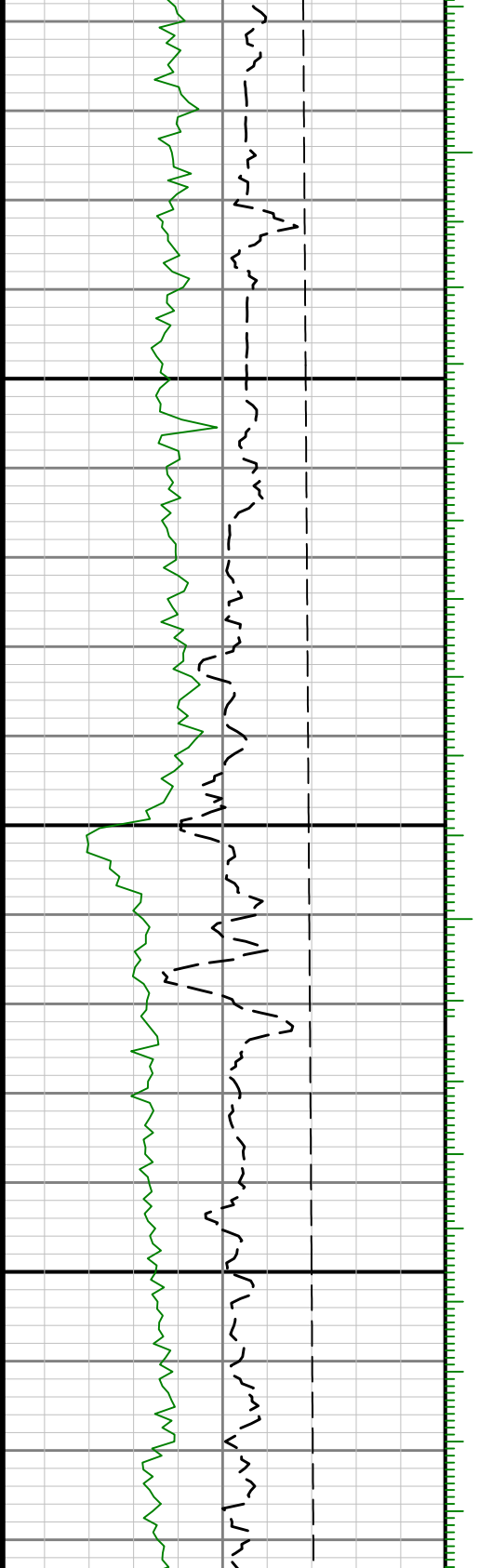


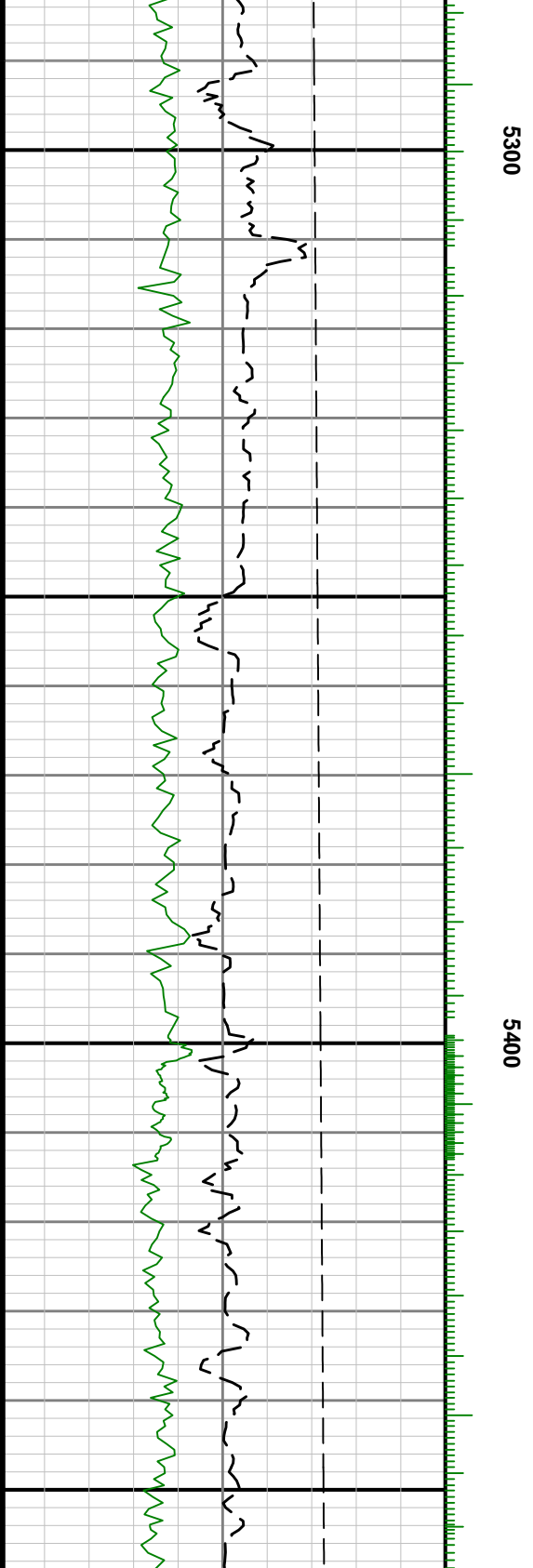
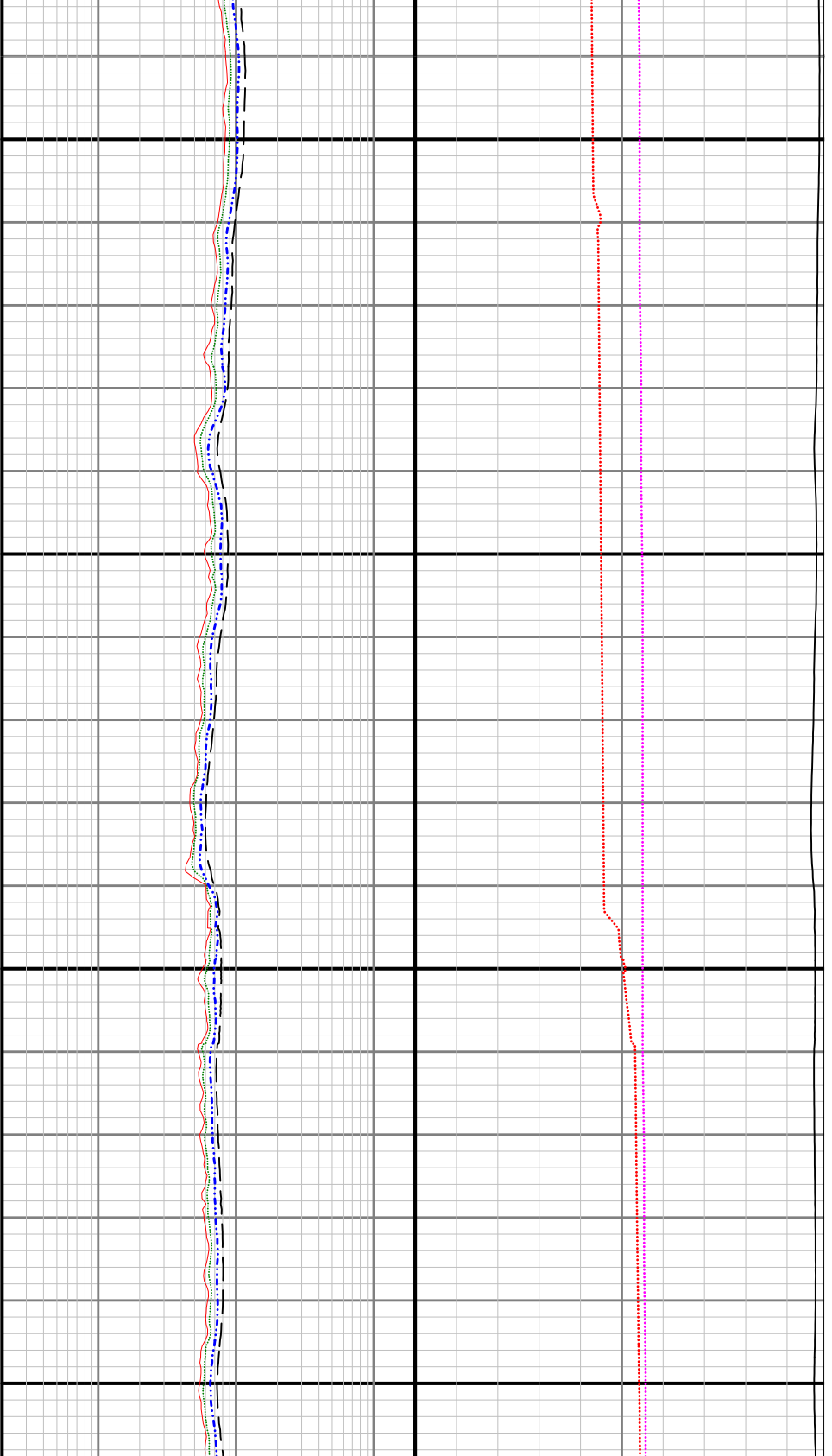


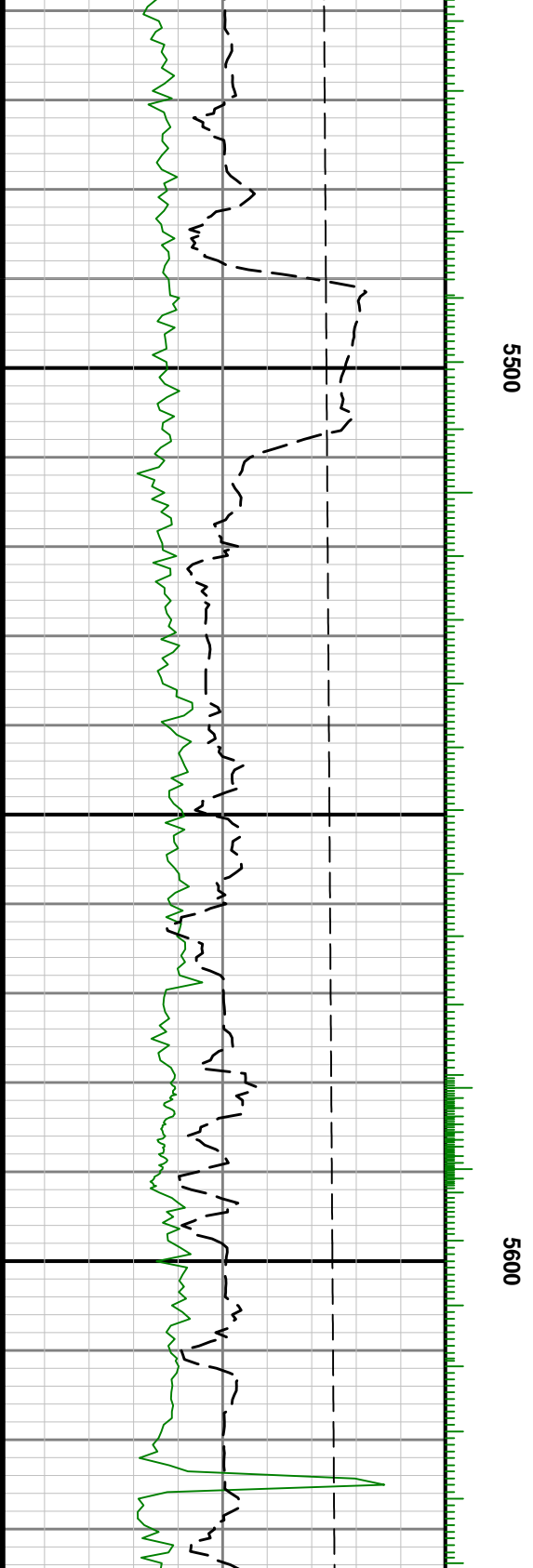
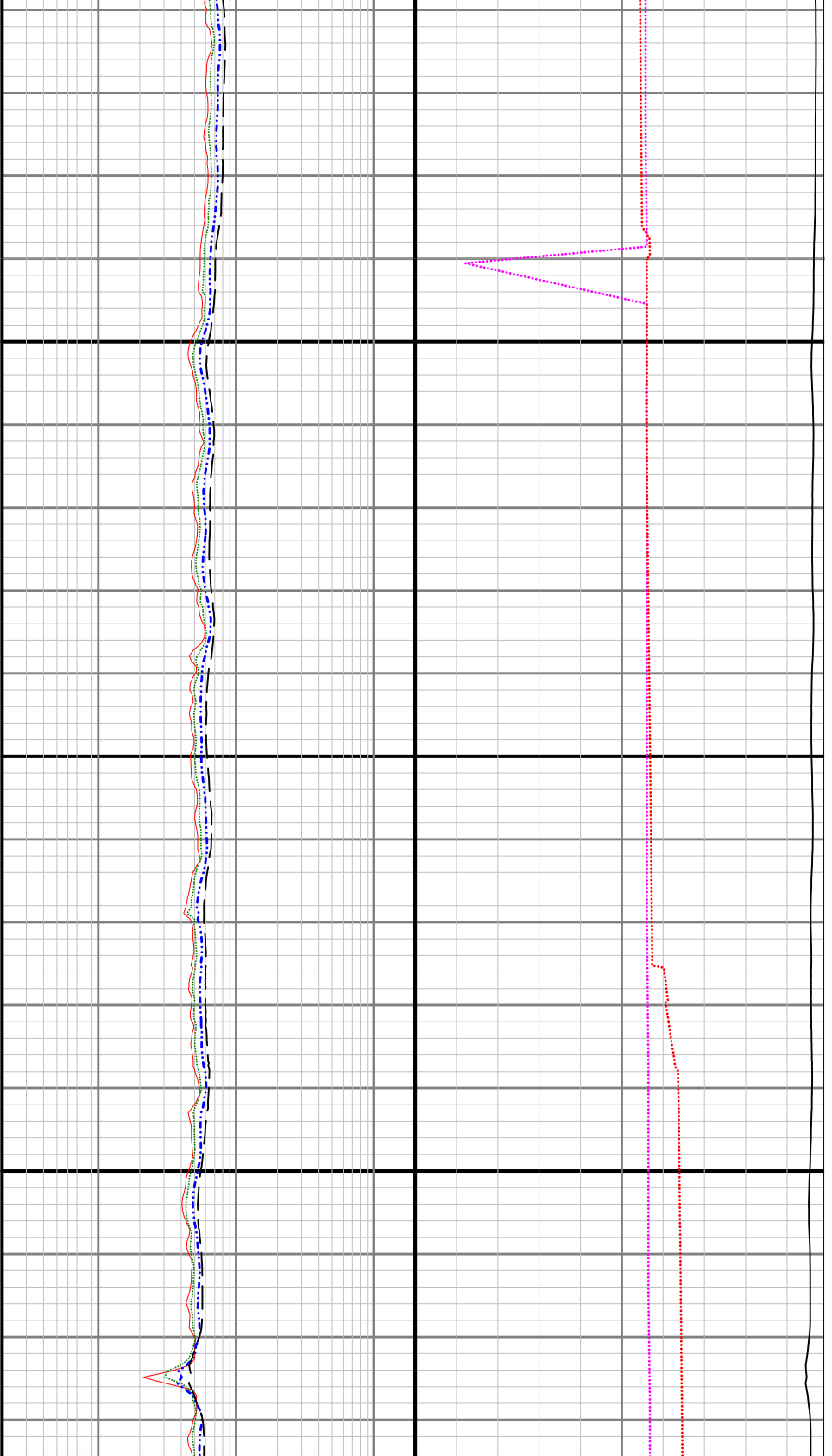


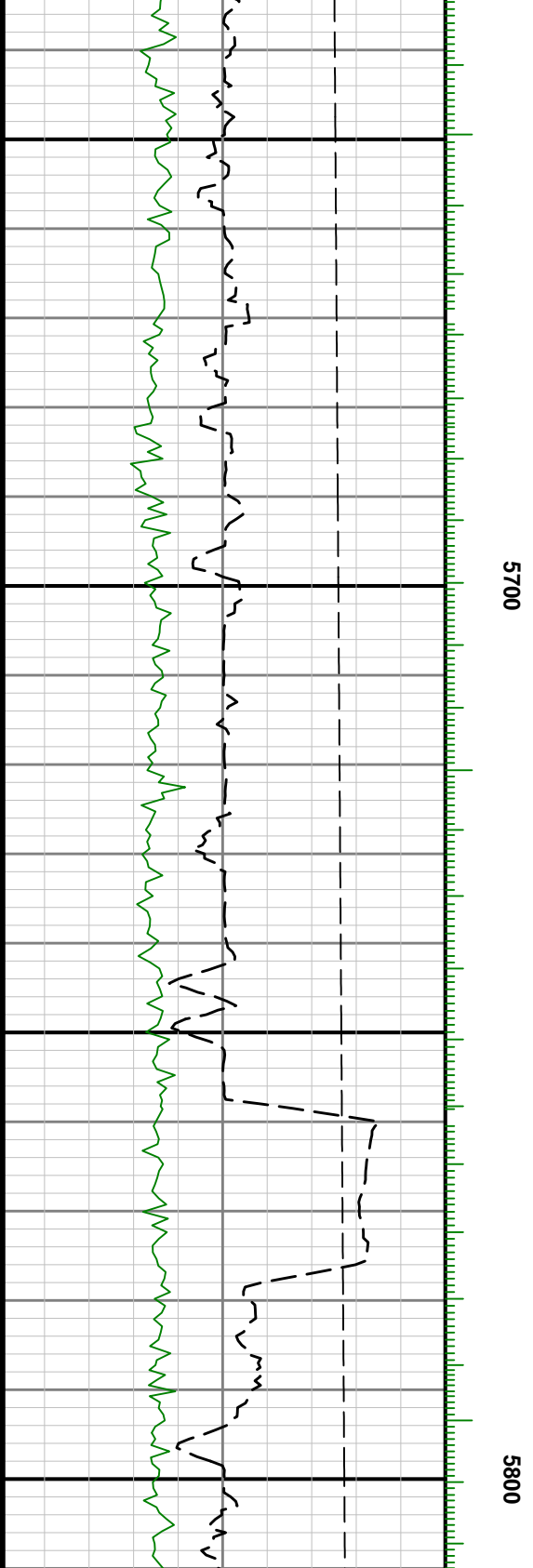


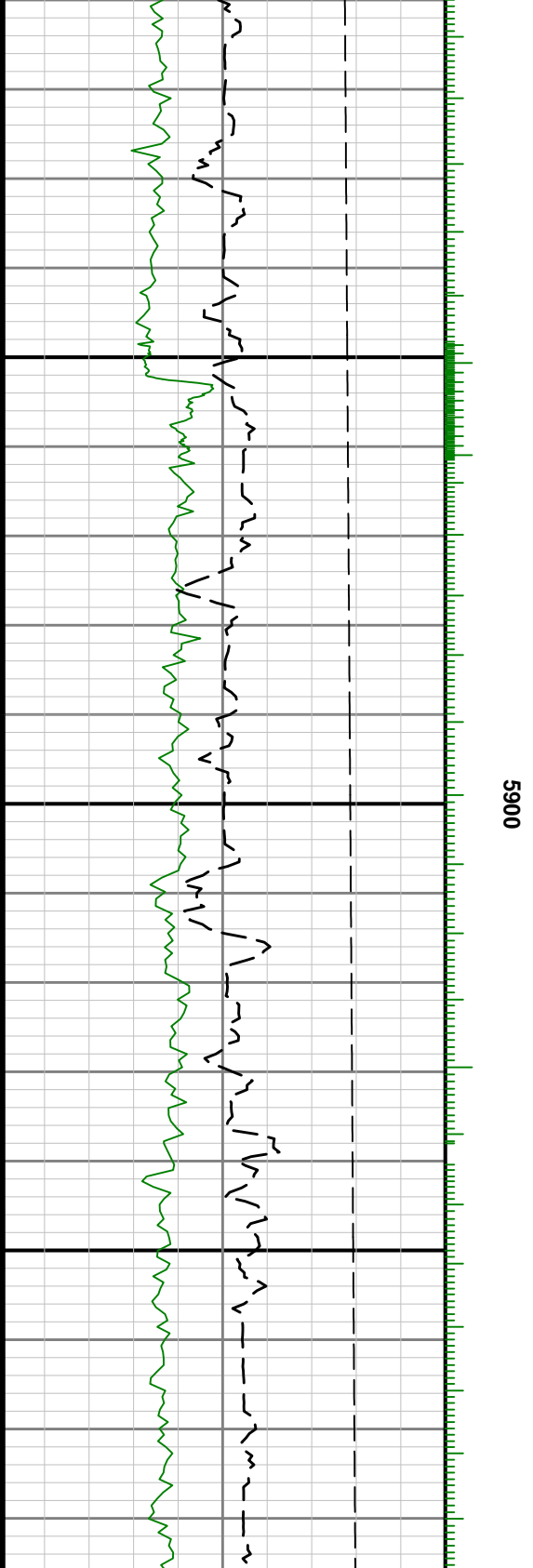
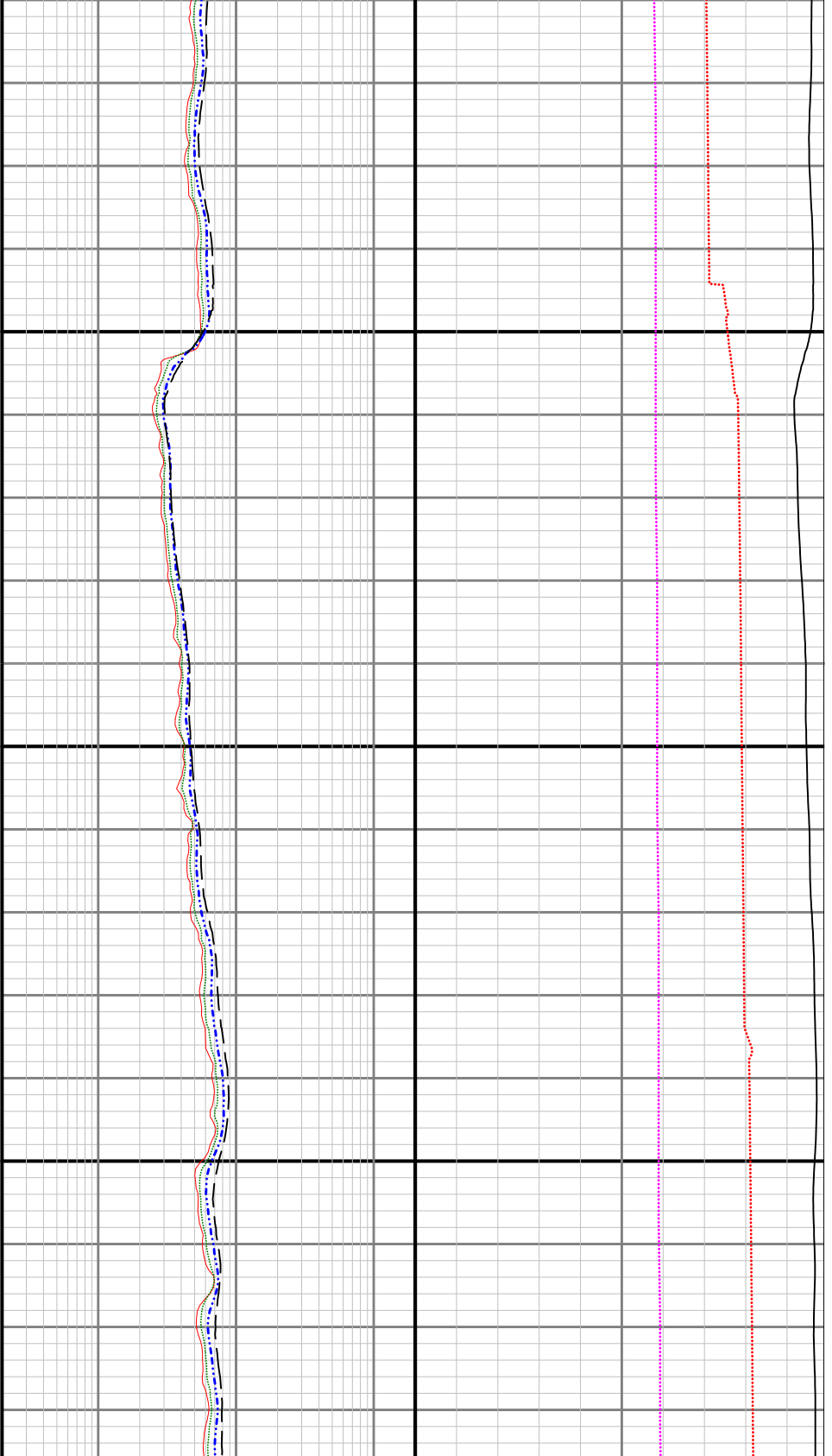
5200

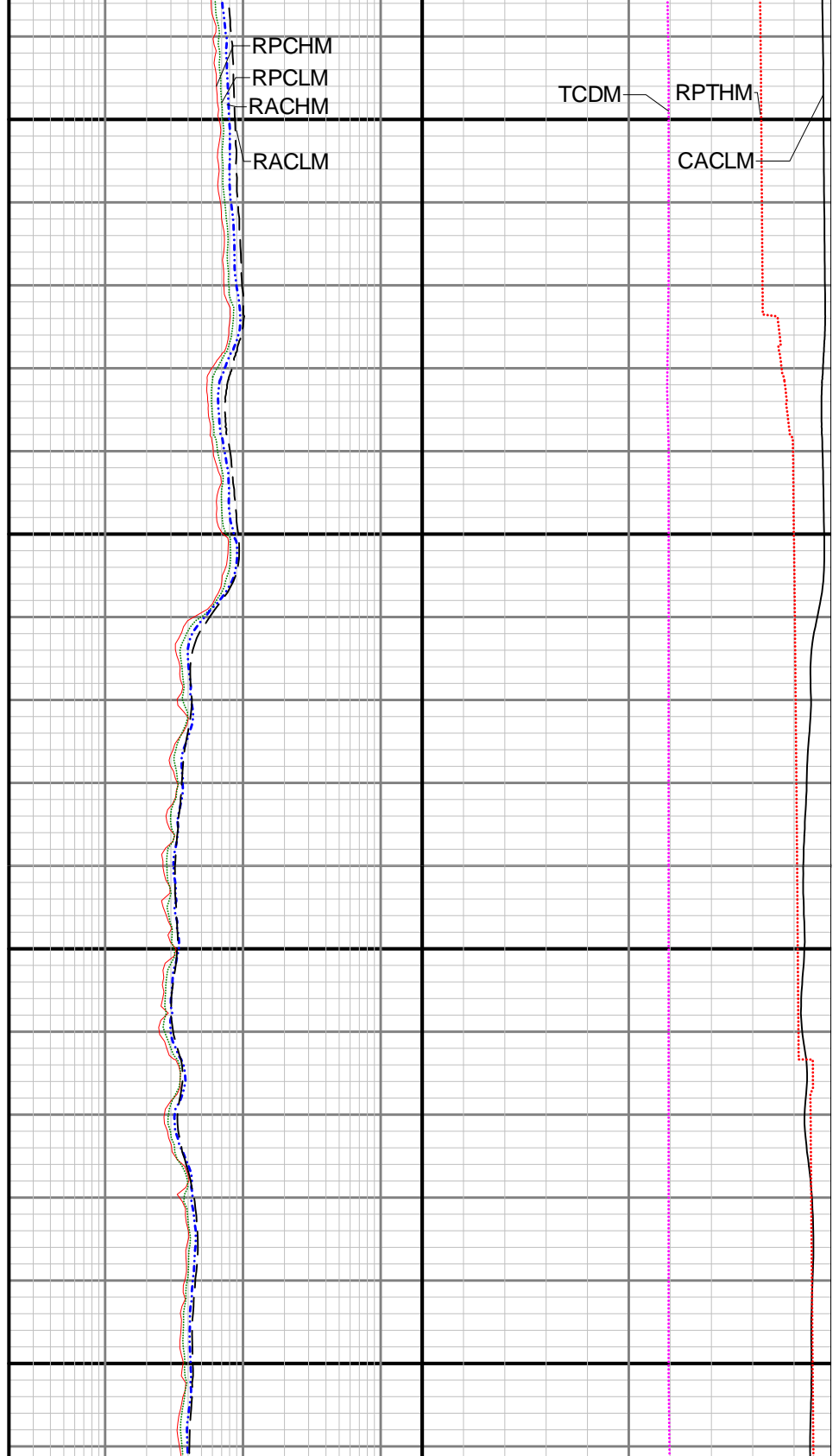
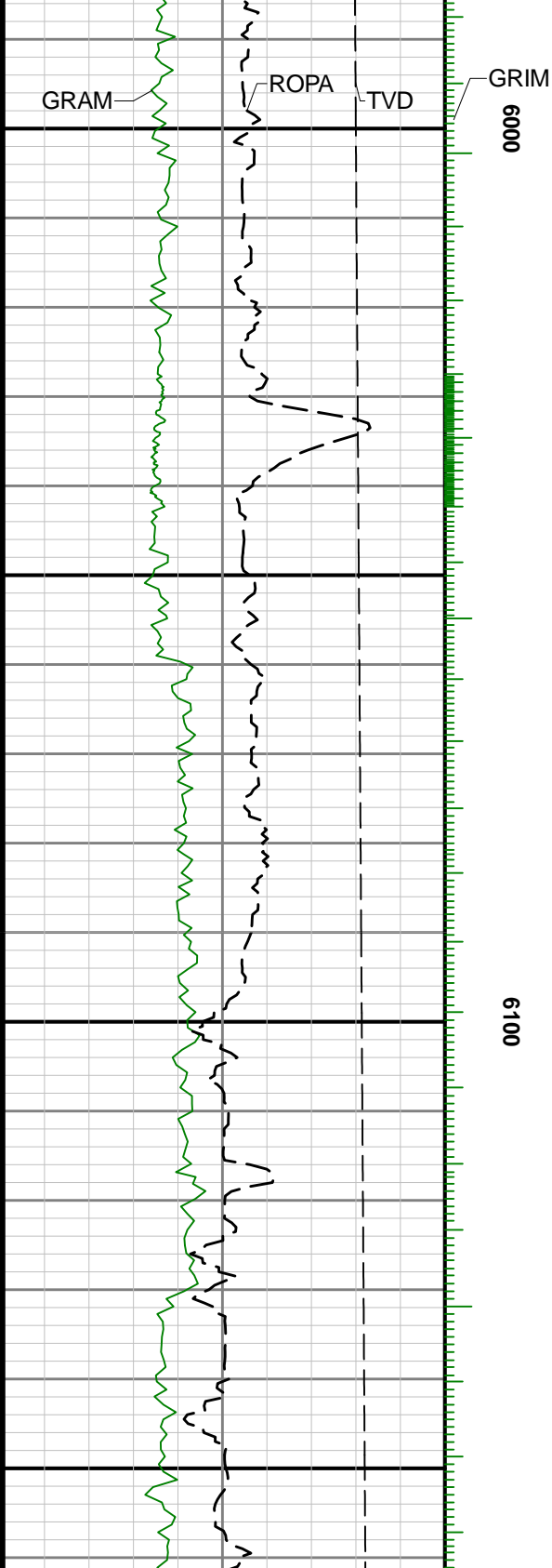


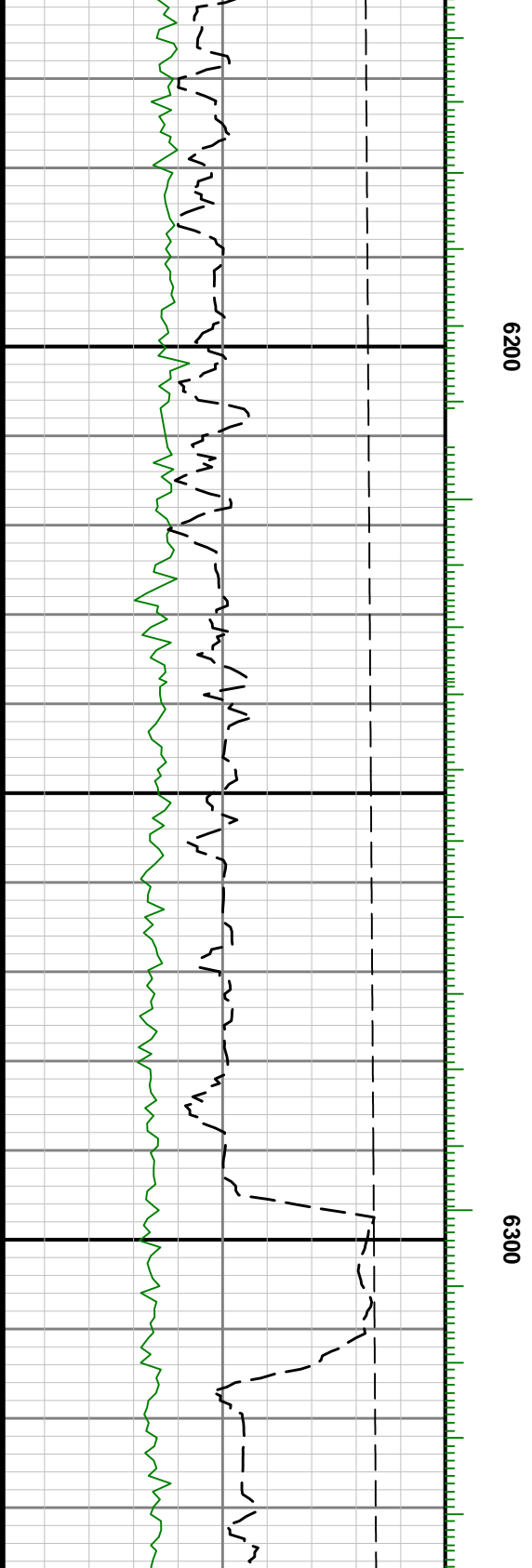
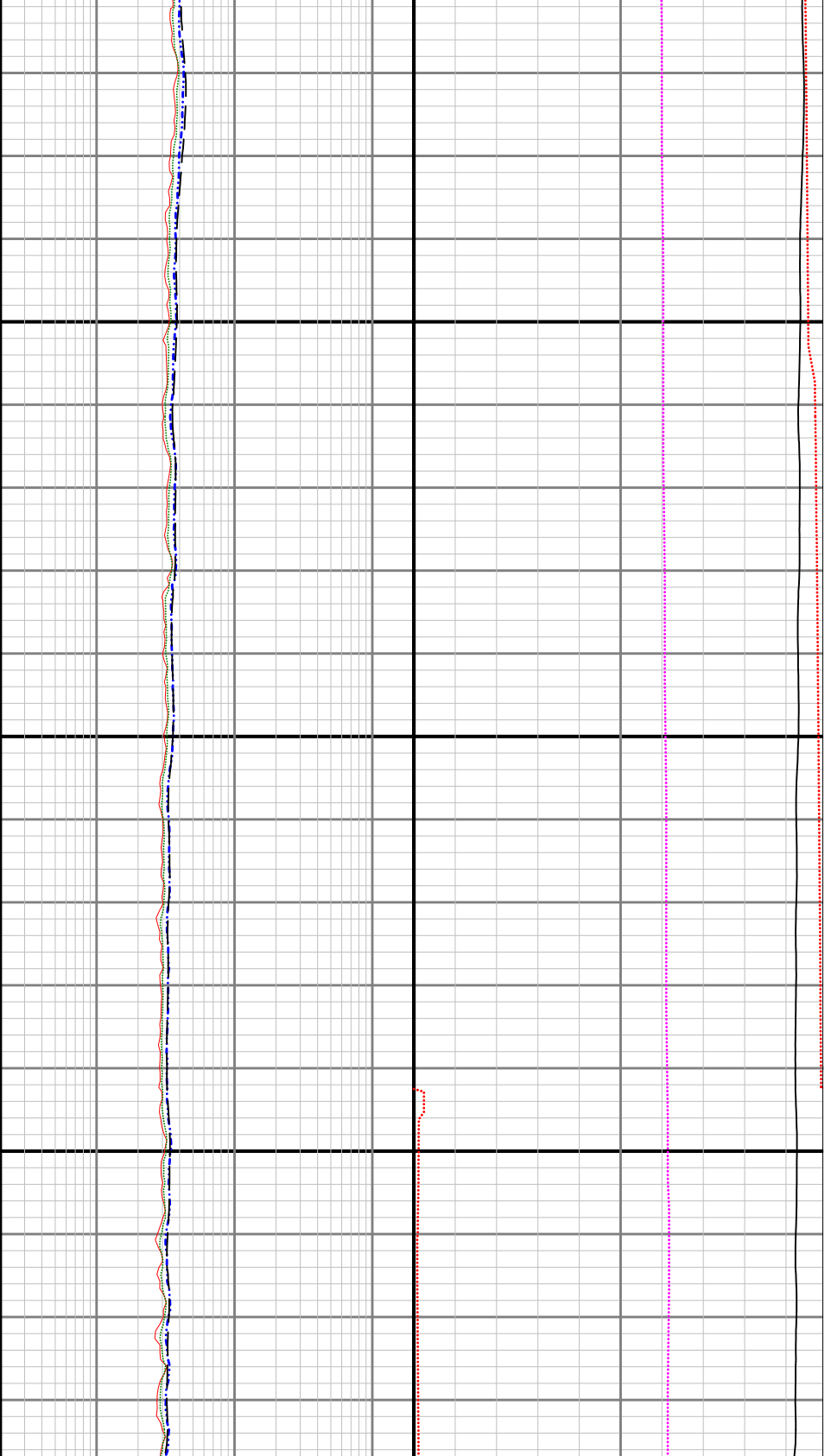


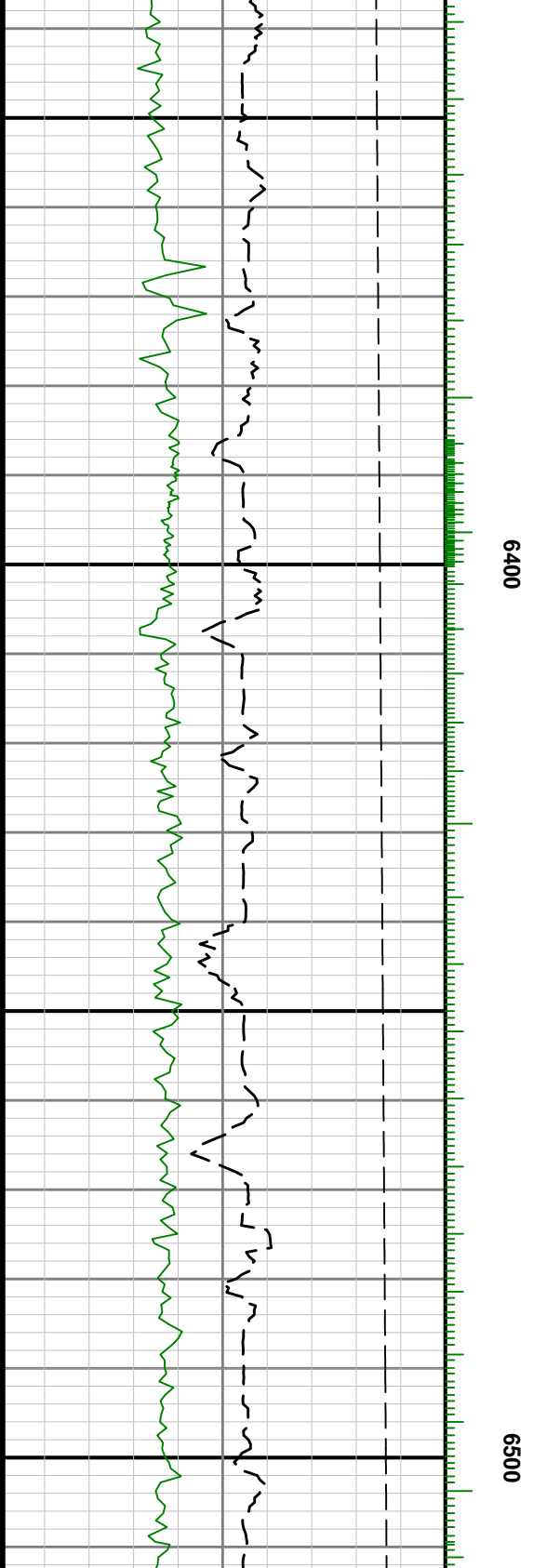
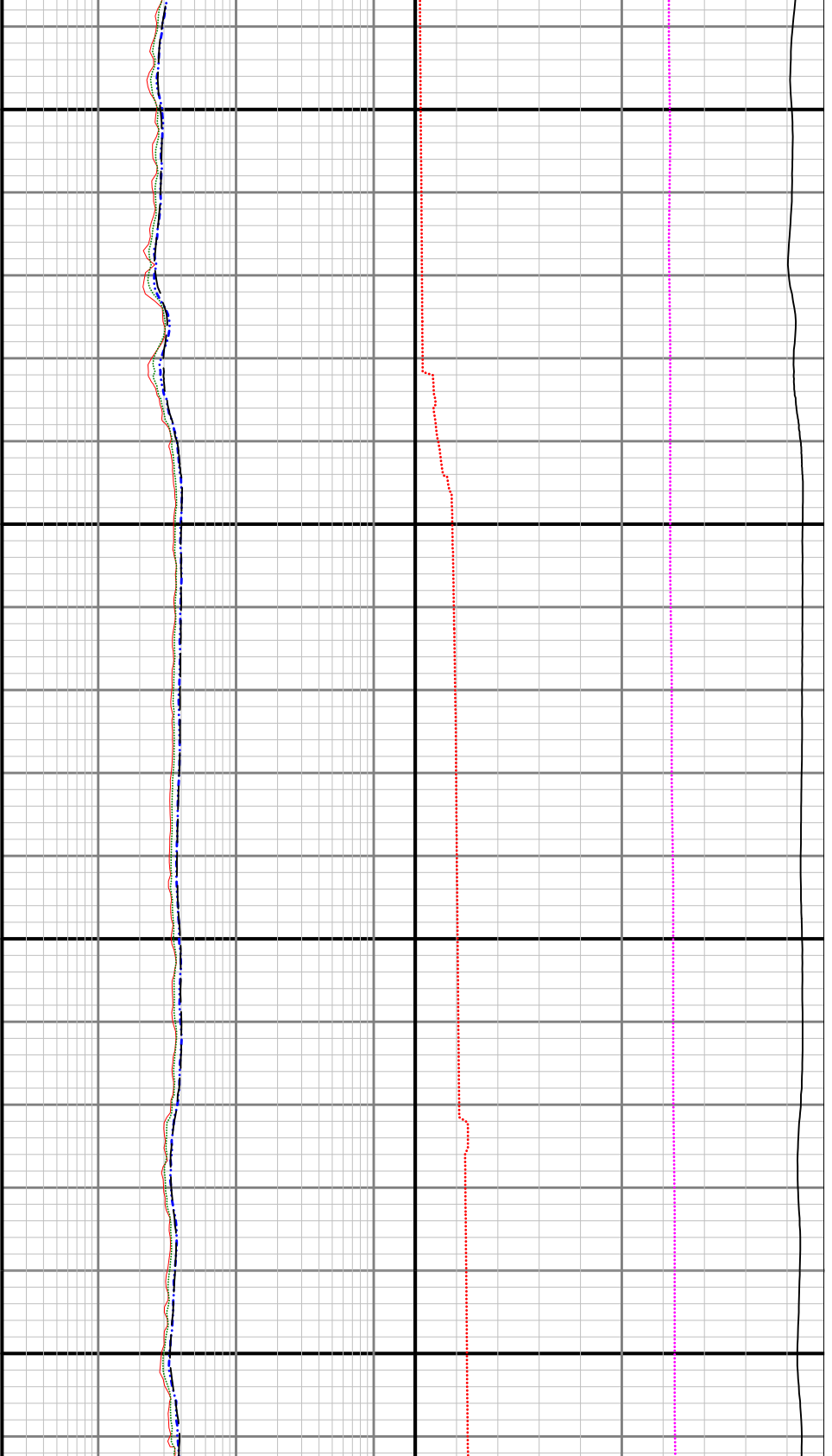


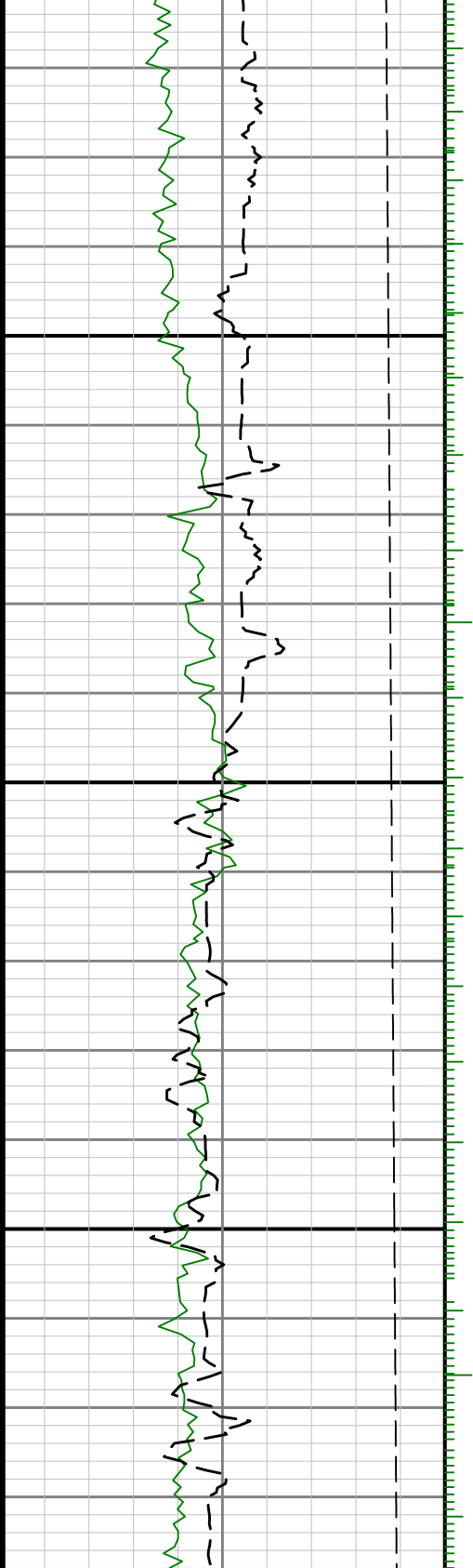












0099

