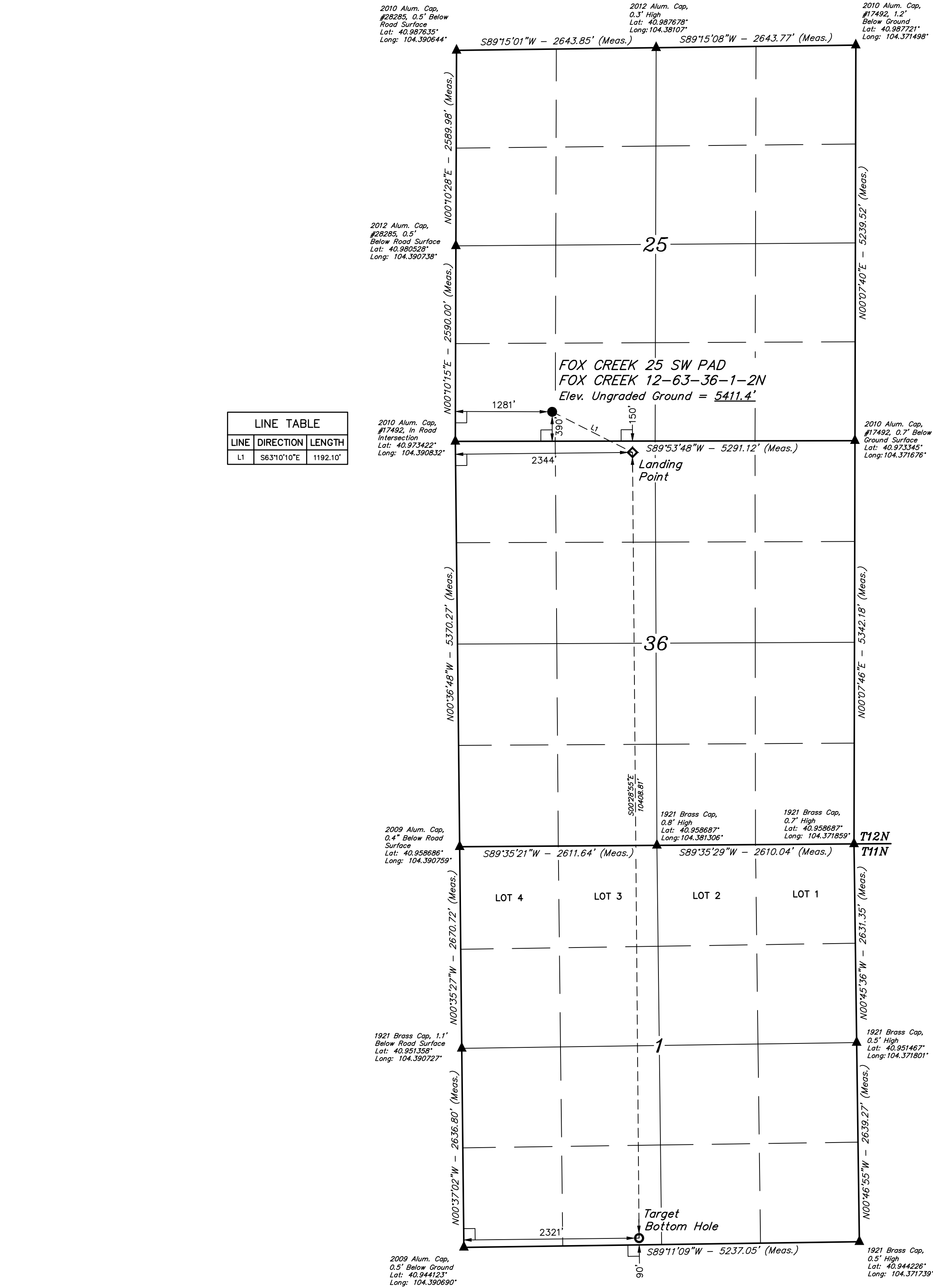


LEGEND:

- 90° SYMBOL
PROPOSED WELLHEAD.
LANDING POINT.
TARGET BOTTOM HOLE.
SECTION CORNERS LOCATED. (NAD 83)

T12N, R63W, 6th P.M.



BASIS OF BEARINGS
TRANSVERSE MERCATOR PROJECTION WITH
A CENTRAL MERIDIAN OF W105°00'00".

BASIS OF ELEVATION
OPUS SOLUTION GENERATED NAVD 88



UELS, LLC
Corporate Office * 85 South 200 East
Vernal, UT 84078 * (435) 789-1017



HIGHPOINT OPERATING CORPORATION
FOX CREEK 25 SW PAD
FOX CREEK 12-63-36-1-2N
SW 1/4 SW 1/4, SECTION 25, T12N, R63W, 6th P.M.
WELD COUNTY, COLORADO

SURVEYED BY RYAN WILLIAMS 08-16-18 SCALE
DRAWN BY A.P. 08-23-18 1" = 1000'

WELL LOCATION PLAT

CERTIFICATE OF RECORD
THIS IS TO CERTIFY THAT THE ABOVE COPIES HAVE BEEN PREPARED FROM THE
NOTES OF ACTUAL SURVEYS MADE BY ME OR UNDER MY SUPERVISION
AND THAT THE SAME ARE TRUE AND CORRECT TO THE BEST OF MY
KNOWLEDGE AND BELIEF.

REGISTERED LAND SURVEYOR
REGISTRATION NO. 28285
STATE OF COLORADO 08-16-18